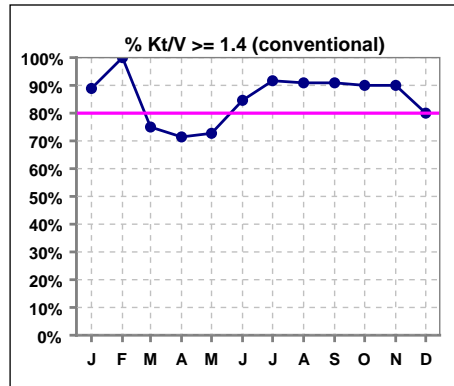


I. ADEQUACY OF DIALYSIS

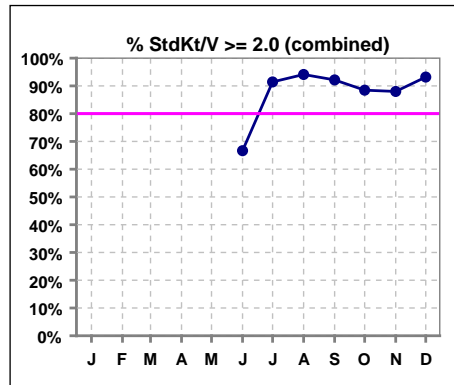
Conventional

	Jan	Feb	Mar	Apr	May	Jun	Jul	Aug	Sep	Oct	Nov	Dec
# Kt/V	9	8	8	7	11	13	12	11	11	10	10	10
# Kt/V >= 1.4	8	8	6	5	8	11	11	10	10	9	9	8
Pop. Mean	1.67	1.89	1.70	2.10	1.75	1.75	1.93	2.16	2.26	1.90	1.93	1.82
Std. Deviation	0.27	0.48	0.63	1.16	0.68	0.60	0.96	1.39	1.36	0.42	0.51	0.60
Network Mean	1.59	1.59	1.59	1.59	1.59	1.59	1.59	1.59	1.59	1.59	1.59	1.59
Natl. Mean '06	1.55	1.55	1.55	1.55	1.55	1.55	1.55	1.55	1.55	1.55	1.55	1.55
% Kt/V >= 1.4	89%	100%	75%	71%	73%	85%	92%	91%	91%	90%	90%	80%
% Kt/V >= 1.2	89%	100%	88%	86%	82%	92%	92%	100%	91%	100%	100%	100%
Network >= 1.2 '06	89%	89%	89%	89%	89%	89%	89%	89%	89%	89%	89%	89%
Natl. % > 1.2 '06	90%	90%	90%	90%	90%	90%	90%	90%	90%	90%	90%	90%



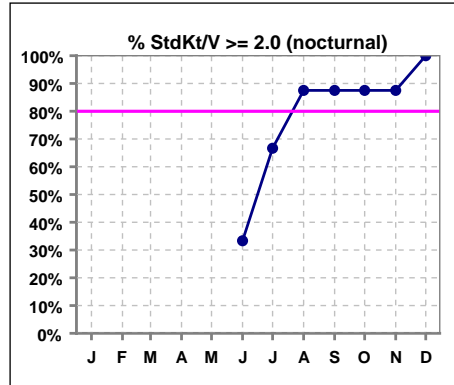
Combined standard nocturnal/short daily

	Jan	Feb	Mar	Apr	May	Jun	Jul	Aug	Sep	Oct	Nov	Dec
# StdKt/V						9	35	51	51	52	50	44
# StdKt/V >= 2.0						6	32	48	47	46	44	41
Pop. Mean						2.37	3.02	3.18	3.10	2.98	2.92	3.01
Std. Deviation						0.55	0.78	0.89	0.80	0.80	0.81	0.84
Network Mean												
Natl. Mean '06												
% StdKt/V >= 2.0						67%	91%	94%	92%	88%	88%	93%



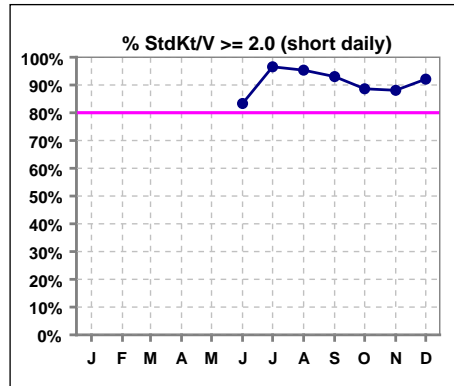
Standard nocturnal

	Jan	Feb	Mar	Apr	May	Jun	Jul	Aug	Sep	Oct	Nov	Dec
# StdKt/V						3	6	8	8	8	8	6
# StdKt/V >= 2.0						1	4	7	7	7	7	6
Pop. Mean						2.27	3.02	3.55	3.53	3.44	3.22	3.34
Std. Deviation						0.72	0.99	1.67	1.66	1.51	1.39	1.55
Network Mean												
Natl. Mean '06												
% StdKt/V >= 2.0						33%	67%	88%	88%	88%	88%	100%



Standard short daily

	Jan	Feb	Mar	Apr	May	Jun	Jul	Aug	Sep	Oct	Nov	Dec
# StdKt/V						6	29	43	43	44	42	38
# StdKt/V >= 2.0						5	28	41	40	39	37	35
Pop. Mean						2.43	3.02	3.11	3.02	2.90	2.86	2.96
Std. Deviation						0.51	0.76	0.67	0.52	0.58	0.66	0.69
Network Mean												
Natl. Mean '06												
% StdKt/V >= 2.0						83%	97%	95%	93%	89%	88%	92%

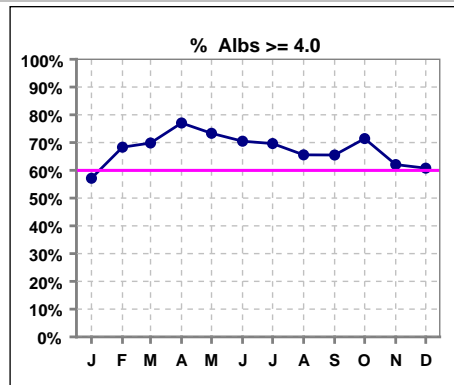


*Methodology: a) Monthly values based on patient's monthly average of all values present for the month; b) Quarter values are average of all values for quarter; c) Values not averaged use last value present at months end.

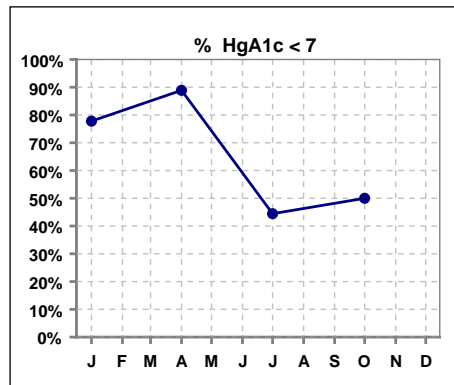
*Albumin values use BCG method - as of July 2001

II. NUTRITION

	Jan	Feb	Mar	Apr	May	Jun	Jul	Aug	Sep	Oct	Nov	Dec
# Albumin	56	60	63	61	60	61	56	61	58	56	58	51
# Albumin >= 4.0				47	44	43	39	40	38	40	36	31
# Albumin >= 3.5	54	58	59									
Pop. Mean	4.0	4.1	4.1	4.2	4.2	4.2	4.1	4.1	4.0	4.1	4.1	4.1
Std. Deviation	0.30	0.36	0.37	0.36	0.37	0.38	0.41	0.40	0.36	0.35	0.40	0.37
Network Mean	3.4	3.4	3.4	3.4	3.4	3.4	3.4	3.4	3.4	3.4	3.4	3.4
Natl. Mean	3.8	3.8	3.8	3.8	3.8	3.8	3.8	3.8	3.8	3.8	3.8	3.8
% Alb >= 3.5	96%	97%	94%	98%	97%	97%	95%	95%	91%	96%	93%	98%
% Alb >= 3.0	100%	100%	100%	100%	100%	100%	100%	100%	100%	100%	100%	100%
% Alb >= 4.0	57%	68%	70%	77%	73%	70%	70%	66%	66%	71%	62%	61%
Netwk%>=3.5 '06	82%	82%	82%	82%	82%	82%	82%	82%	82%	82%	82%	82%
Netwk%>=4.0 '06	34%	34%	34%	34%	34%	34%	34%	34%	34%	34%	34%	34%
Natl % >= 3.5 '06	81%	81%	81%	81%	81%	81%	81%	81%	81%	81%	81%	81%
Natl. % >= 4.0 '06	34%	34%	34%	34%	34%	34%	34%	34%	34%	34%	34%	34%



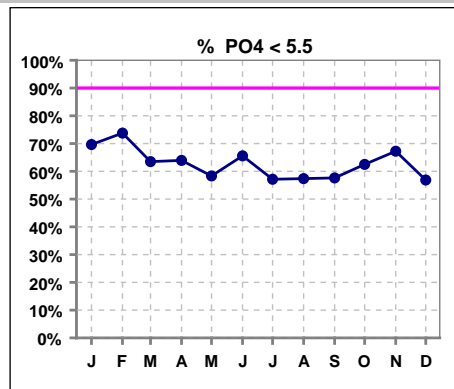
	Jan	Feb	Mar	Apr	May	Jun	Jul	Aug	Sep	Oct	Nov	Dec
# HgA1c	9			9			9			10		
# HgA1c < 7	7			8			4			5		
Pop. Mean	6.7			6.2			6.9			6.5		
Std. Deviation	1.44			1.32			1.35			1.03		
Network Mean												
Natl. Mean												
% HgA1c < 7	78%			89%			44%			50%		



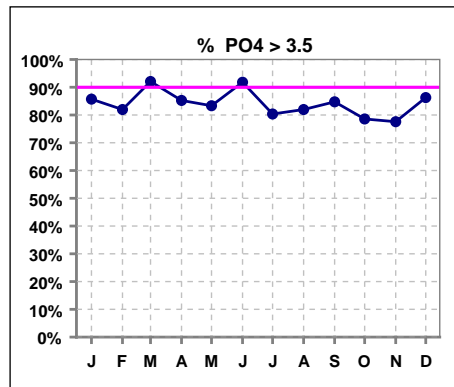
*Methodology: a) Monthly values based on patient's monthly average of all values present for the month; b) Quarter values are average of all values for quarter; c) Values not averaged use last value present at months end.

III. OSTEODYSTROPHY

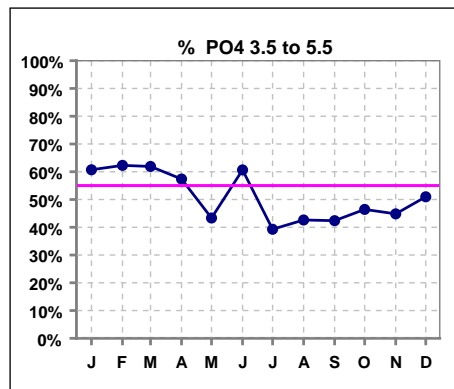
	Jan	Feb	Mar	Apr	May	Jun	Jul	Aug	Sep	Oct	Nov	Dec
# PO4	56	61	63	61	60	61	56	61	59	56	58	51
# PO4 < 5.5	39	45	40	39	35	40	32	35	34	35	39	29
Pop. Mean	4.9	5.0	5.1	5.1	5.2	5.1	5.2	5.1	5.3	4.9	5.0	5.4
Std. Deviation	1.27	1.46	1.29	1.49	1.45	1.58	1.75	1.65	1.72	1.42	1.69	1.51
Network Mean												
Natl. Mean '06	5	5	5	5	5	5	5	5	5	5	5	5
% PO4 < 5.5	70%	74%	63%	64%	58%	66%	57%	57%	58%	63%	67%	57%



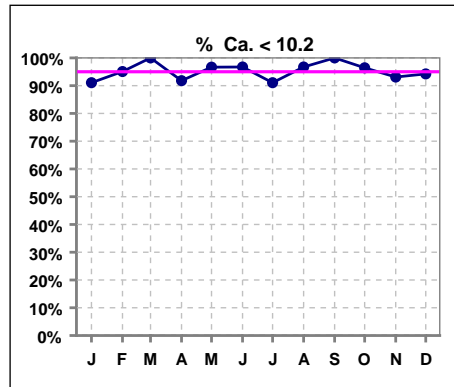
	Jan	Feb	Mar	Apr	May	Jun	Jul	Aug	Sep	Oct	Nov	Dec
# PO4	56	61	63	61	60	61	56	61	59	56	58	51
# PO4 > 3.5	48	50	58	52	50	56	45	50	50	44	45	44
Pop. Mean	4.9	5.0	5.1	5.1	5.2	5.1	5.2	5.1	5.3	4.9	5.0	5.4
Std. Deviation	1.27	1.46	1.29	1.49	1.45	1.58	1.75	1.65	1.72	1.42	1.69	1.51
Network Mean												
Natl. Mean '06	5	5	5	5	5	5	5	5	5	5	5	5
% PO4 > 3.5	86%	82%	92%	85%	83%	92%	80%	82%	85%	79%	78%	86%



	Jan	Feb	Mar	Apr	May	Jun	Jul	Aug	Sep	Oct	Nov	Dec
# PO4	56	61	63	61	60	61	56	61	59	56	58	51
# PO4 3.5 to 5.5	34	38	39	35	26	37	22	26	25	26	26	26
Pop. Mean	4.9	5.0	5.1	5.1	5.2	5.1	5.2	5.1	5.3	4.9	5.0	5.4
Std. Deviation	1.27	1.46	1.29	1.49	1.45	1.58	1.75	1.65	1.72	1.42	1.69	1.51
Network Mean												
% PO4 3.5 to 5.5	61%	62%	62%	57%	43%	61%	39%	43%	42%	46%	45%	51%



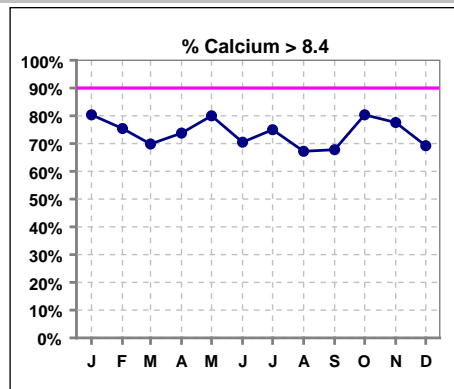
	Jan	Feb	Mar	Apr	May	Jun	Jul	Aug	Sep	Oct	Nov	Dec
# Calcium	56	61	63	61	60	61	56	61	59	56	58	52
# Calcium < 10.2	51	58	63	56	58	59	51	59	59	54	54	49
Pop. Mean	9.0	8.8	8.9	8.9	9.0	8.9	9.0	8.8	8.8	9.0	9.0	9.0
Std. Deviation	0.81	0.69	0.68	0.78	0.88	0.75	0.88	0.93	0.72	0.85	0.70	0.73
Network Mean												
Natl. Mean '06	9	9	9	9	9	9	9	9	9	9	9	9
% Ca < 10.2	91%	95%	100%	92%	97%	97%	91%	97%	100%	96%	93%	94%



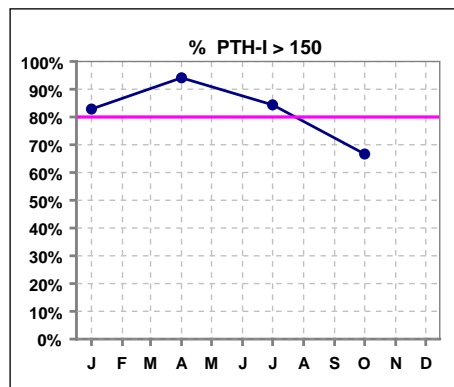
*Methodology: a) Monthly values based on patient's monthly average of all values present for the month; b) Quarter values are average of all values for quarter; c) Values not averaged use last value present at months end.

III. OSTEODYSTROPHY - CONT.

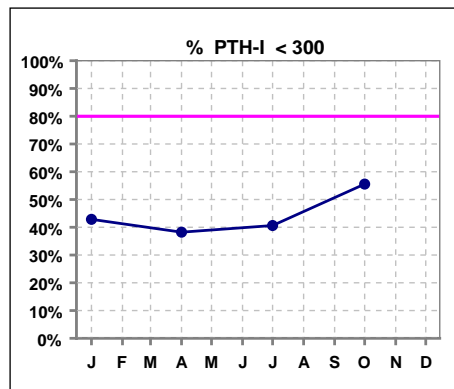
	Jan	Feb	Mar	Apr	May	Jun	Jul	Aug	Sep	Oct	Nov	Dec
# Calcium	56	61	63	61	60	61	56	61	59	56	58	52
# Calcium > 8.4				45	48	43	42	41	40	45	45	36
# Calcium > 8.5	40	44	42									
Pop. Mean	9.0	8.8	8.9	8.9	9.0	8.9	9.0	8.8	8.8	9.0	9.0	9.0
Std. Deviation	0.81	0.69	0.68	0.78	0.88	0.75	0.88	0.93	0.72	0.85	0.70	0.73
Network Mean												
Natl. Mean '06	9	9	9	9	9	9	9	9	9	9	9	9
% Calcium > 8.4	80%	75%	70%	74%	80%	70%	75%	67%	68%	80%	78%	69%



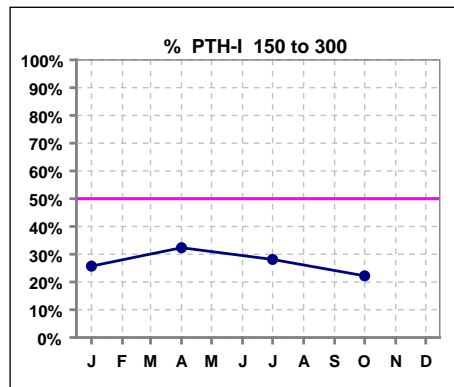
	Jan	Feb	Mar	Apr	May	Jun	Jul	Aug	Sep	Oct	Nov	Dec
# PTH-I	35			34			32			36		
# PTH-I > 150	29			32			27			24		
Pop. Mean	508			518			555			449		
Std. Deviation	468			627			536			569		
Network Mean												
Natl. Mean												
% PTH-I > 150	83%			94%			84%			67%		



	Jan	Feb	Mar	Apr	May	Jun	Jul	Aug	Sep	Oct	Nov	Dec
# PTH-I	35			34			32			36		
# PTH-I < 300	15			13			13			20		
Pop. Mean	508			518			555			449		
Std. Deviation	468			627			536			569		
Network Mean												
Natl. Mean												
% PTH-I < 300	43%			38%			41%			56%		



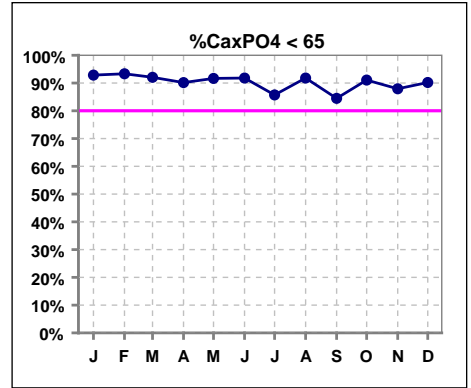
	Jan	Feb	Mar	Apr	May	Jun	Jul	Aug	Sep	Oct	Nov	Dec
# PTH-I	35			34			32			36		
# PTH-I 150 to 300	9			11			9			8		
Pop. Mean	508			518			555			449		
Std. Deviation	468			627			536			569		
Network Mean												
Natl. Mean												
% PTH-I 150 to 300	26%			32%			28%			22%		



*Methodology: a) Monthly values based on patient's monthly average of all values present for the month; b) Quarter values are average of all values for quarter; c) Values not averaged use last value present at months end.

III. OSTEODYSTROPHY - CONT.

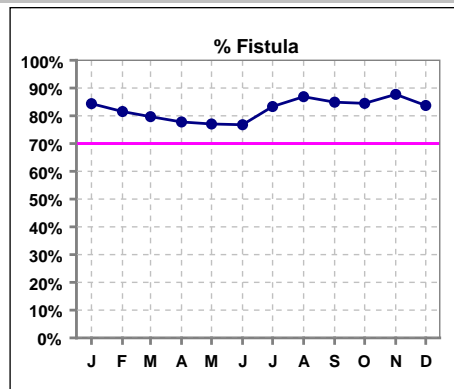
	Jan	Feb	Mar	Apr	May	Jun	Jul	Aug	Sep	Oct	Nov	Dec
# Ca x PO4	56	60	63	61	60	61	56	61	58	56	58	51
# Ca x PO4 < 65				55	55	56	48	56	49	51	51	46
# Ca x PO4 < 55	46	48	51									
Pop. Mean	44.2	44.3	44.8	45.2	46.3	45.3	47.2	44.8	46.3	44.1	44.6	48.2
Std. Deviation	12.5	13.8	13.1	14.8	14.5	13.7	16.3	14.9	15.8	14.5	15.0	14.5
Network Mean												
Natl. Mean												
% Ca x PO4 < 65	93%	93%	92%	90%	92%	92%	86%	92%	84%	91%	88%	90%



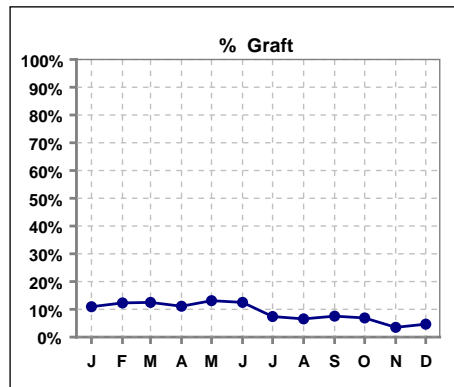
*Methodology: a) Monthly values based on patient's monthly average of all values present for the month; b) Quarter values are average of all values for quarter; c) Values not averaged use last value present at months end.

IV. ACCESS

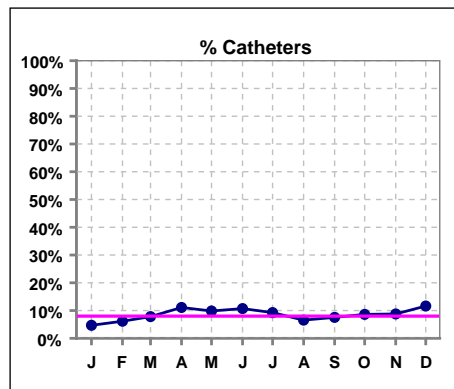
	Jan	Feb	Mar	Apr	May	Jun	Jul	Aug	Sep	Oct	Nov	Dec
# Access	64	65	64	63	61	56	54	61	53	58	57	43
# Fistula	54	53	51	49	47	43	45	53	45	49	50	36
Network % '06	61%	61%	61%	61%	61%	61%	61%	61%	61%	61%	61%	61%
Natl. % '06	45%	45%	45%	45%	45%	45%	45%	45%	45%	45%	45%	45%
% Fistula	84%	82%	80%	78%	77%	77%	83%	87%	85%	84%	88%	84%



	Jan	Feb	Mar	Apr	May	Jun	Jul	Aug	Sep	Oct	Nov	Dec
# Access	64	65	64	63	61	56	54	61	53	58	57	43
# Graft	7	8	8	7	8	7	4	4	4	4	2	2
Network %												
Natl. %												
% Graft	11%	12%	13%	11%	13%	13%	7%	7%	8%	7%	4%	5%

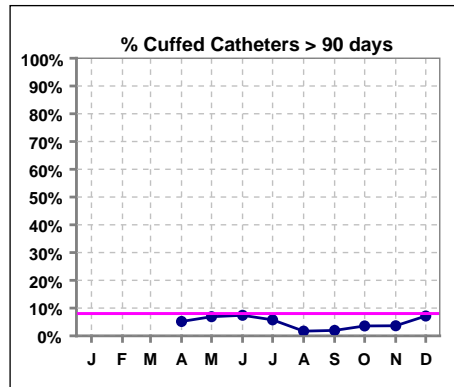


	Jan	Feb	Mar	Apr	May	Jun	Jul	Aug	Sep	Oct	Nov	Dec
# Access	64	65	64	63	61	56	54	61	53	58	57	43
# Catheters	3	4	5	7	6	6	5	4	4	5	5	5
Network % '06	22%	22%	22%	22%	22%	22%	22%	22%	22%	22%	22%	22%
Natl. % '06	29%	29%	29%	29%	29%	29%	29%	29%	29%	29%	29%	29%
% Catheters	5%	6%	8%	11%	10%	11%	9%	7%	8%	9%	9%	12%



Cuffed Catheters > 90 days

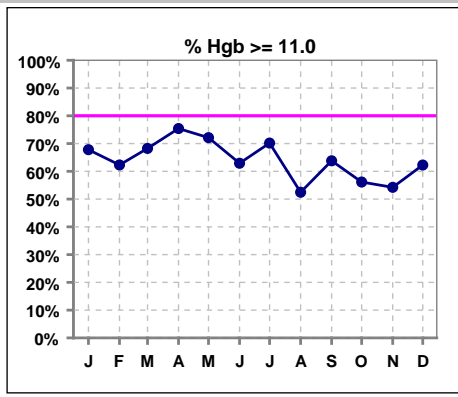
	Jan	Feb	Mar	Apr	May	Jun	Jul	Aug	Sep	Oct	Nov	Dec
# Access	64	65	64	63	61	56	54	61	53	58	57	43
# Cuffed Catheters				3	4	4	3	1	1	2	2	3
Network % '06	22%	22%	22%	22%	22%	22%	22%	22%	22%	22%	22%	22%
Natl. % '06	29%	29%	29%	29%	29%	29%	29%	29%	29%	29%	29%	29%
% Cuffed Catheters				5%	7%	7%	6%	2%	2%	4%	4%	7%



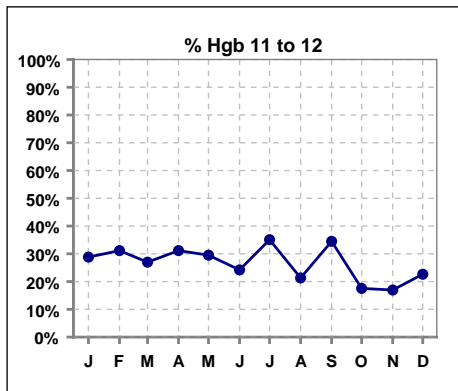
*Methodology: a) Monthly values based on patient's monthly average of all values present for the month; b) Quarter values are average of all values for quarter; c) Values not averaged use last value present at months end.

V. ANEMIA

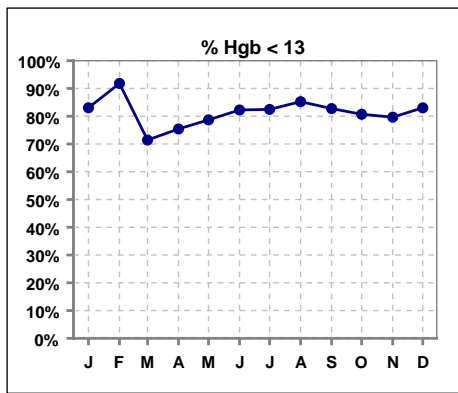
	Jan	Feb	Mar	Apr	May	Jun	Jul	Aug	Sep	Oct	Nov	Dec
# Hgb	59	61	63	61	61	62	57	61	58	57	59	53
# Hgb >= 11.0	40	38	43	46	44	39	40	32	37	32	32	33
Pop. Mean	11.5	11.4	11.8	12.0	11.7	11.5	11.5	11.2	11.4	11.3	11.3	11.6
Std. Deviation	1.5	1.4	1.7	1.5	1.5	1.6	1.4	1.5	1.7	1.8	1.9	1.9
Network Mean	11.8	11.8	11.8	11.8	11.8	11.8	11.8	11.8	11.8	11.8	11.8	11.8
Natl. Mean '06	12	12	12	12	12	12	12	12	12	12	12	12
% Hgb >= 11.0	68%	62%	68%	75%	72%	63%	70%	52%	64%	56%	54%	62%
% Hgb <= 11.0	32%	38%	33%	26%	31%	42%	30%	48%	36%	44%	46%	40%
% Netwk >= 11 '06	87%	87%	87%	87%	87%	87%	87%	87%	87%	87%	87%	87%
% Natl. >= 11 '06	84%	84%	84%	84%	84%	84%	84%	84%	84%	84%	84%	84%



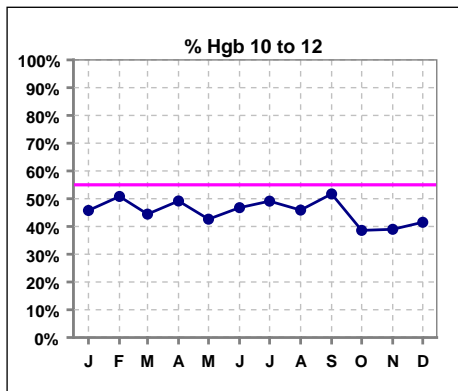
	Jan	Feb	Mar	Apr	May	Jun	Jul	Aug	Sep	Oct	Nov	Dec
# Hgb	59	61	63	61	61	62	57	61	58	57	59	53
# Hgb 11 to 12	17	19	17	19	18	15	20	13	20	10	10	12
Pop. Mean	11.5	11.4	11.8	12.0	11.7	11.5	11.5	11.2	11.4	11.3	11.3	11.6
Std. Deviation	1.5	1.4	1.7	1.5	1.5	1.6	1.4	1.5	1.7	1.8	1.9	1.9
Network Mean	11.8	11.8	11.8	11.8	11.8	11.8	11.8	11.8	11.8	11.8	11.8	11.8
Natl. Mean '06	12	12	12	12	12	12	12	12	12	12	12	12
% Hgb 11 to 12	29%	31%	27%	31%	30%	24%	35%	21%	34%	18%	17%	23%



	Jan	Feb	Mar	Apr	May	Jun	Jul	Aug	Sep	Oct	Nov	Dec
# Hgb	59	61	63	61	61	62	57	61	58	57	59	53
# Hgb < 13	49	56	45	46	48	51	47	52	48	46	47	44
Pop. Mean	11.5	11.4	11.8	12.0	11.7	11.5	11.5	11.2	11.4	11.3	11.3	11.6
Std. Deviation	1.5	1.4	1.7	1.5	1.5	1.6	1.4	1.5	1.7	1.8	1.9	1.9
Network Mean	11.8	11.8	11.8	11.8	11.8	11.8	11.8	11.8	11.8	11.8	11.8	11.8
% Hgb < 13	83%	92%	71%	75%	79%	82%	82%	85%	83%	81%	80%	83%



	Jan	Feb	Mar	Apr	May	Jun	Jul	Aug	Sep	Oct	Nov	Dec
# Hgb	59	61	63	61	61	62	57	61	58	57	59	53
# Hgb 10 to 12	27	31	28	30	26	29	28	28	30	22	23	22
Pop. Mean	11.5	11.4	11.8	12.0	11.7	11.5	11.5	11.2	11.4	11.3	11.3	11.6
Std. Deviation	1.5	1.4	1.7	1.5	1.5	1.6	1.4	1.5	1.7	1.8	1.9	1.9
Network Mean	11.8	11.8	11.8	11.8	11.8	11.8	11.8	11.8	11.8	11.8	11.8	11.8
% Hgb 10 to 12	46%	51%	44%	49%	43%	47%	49%	46%	52%	39%	39%	42%

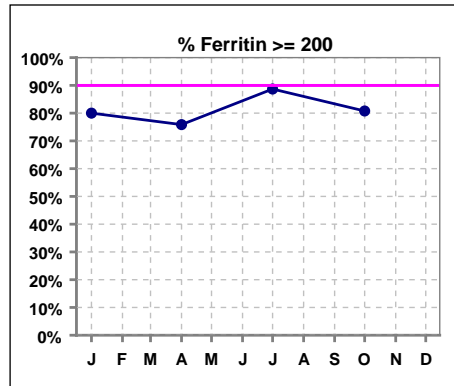


*Methodology: a) Monthly values based on patient's monthly average of all values present for the month; b) Quarter values are average of all values for quarter; c) Values not averaged use last value present at months end.

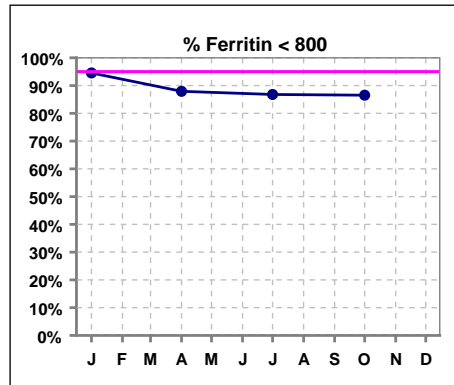
V. ANEMIA - CONT.

Iron Profile

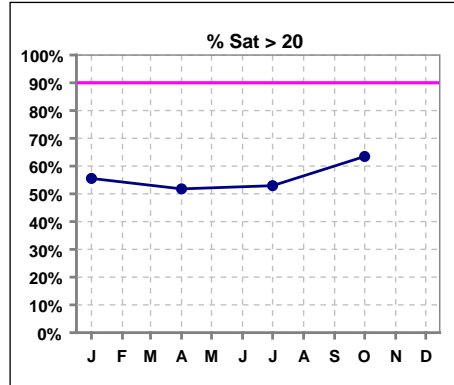
	Jan	Feb	Mar	Apr	May	Jun	Jul	Aug	Sep	Oct	Nov	Dec
# Ferritin	55			58			53			52		
# Ferritin >= 200	44			44			47			42		
Pop. Mean	392			466			495			499		
Std. Deviation	209			477			340			275		
Network Mean												
Natl. Mean '06	583			583			583			583		
% Ferritin >= 200	80%			76%			89%			81%		



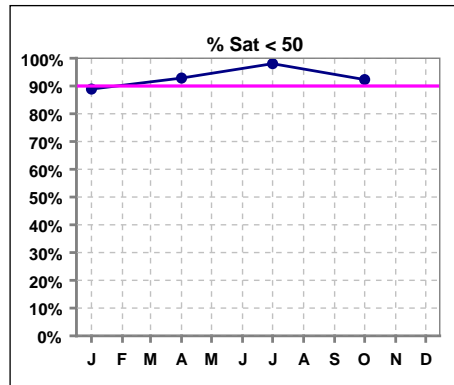
	Jan	Feb	Mar	Apr	May	Jun	Jul	Aug	Sep	Oct	Nov	Dec
# Ferritin	55			58			53			52		
# Ferritin < 800	52			51			46			45		
Pop. Mean	392			466			495			499		
Std. Deviation	209			477			340			275		
Network Mean												
Natl. Mean '06	583			583			583			583		
% Ferritin < 800	95%			88%			87%			87%		



	Jan	Feb	Mar	Apr	May	Jun	Jul	Aug	Sep	Oct	Nov	Dec
# % Sat	54			56			51			52		
# % Sat > 20	30			29			27			33		
Pop. Mean	27			24			25			27		
Std. Deviation	16			15			13			16		
Network Mean												
Natl. Mean '06	28			28			28			28		
% Sat% > 20	56%			52%			53%			63%		
% Netwk >= 20 '06	74%			74%			74%			74%		
% Natl. >=20 '06	79%			79%			79%			79%		



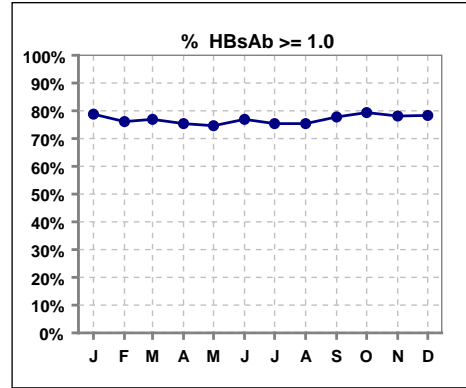
	Jan	Feb	Mar	Apr	May	Jun	Jul	Aug	Sep	Oct	Nov	Dec
# % Sat	54			56			51			52		
# % Sat < 50	48			52			50			48		
Pop. Mean	27			24			25			27		
Std. Deviation	16			15			13			16		
Network Mean												
Natl. Mean '06	28			28			28			28		
% Sat% < 50	89%			93%			98%			92%		



*Methodology: a) Monthly values based on patient's monthly average of all values present for the month; b) Quarter values are average of all values for quarter; c) Values not averaged use last value present at months end.

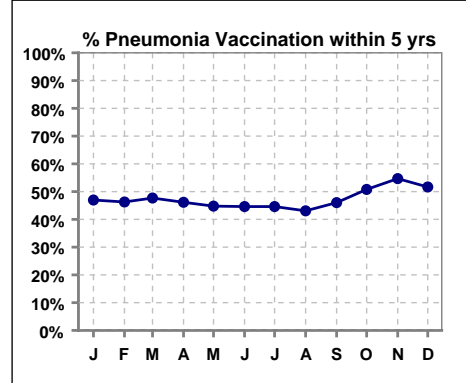
VI. Infection Control

	Jan	Feb	Mar	Apr	May	Jun	Jul	Aug	Sep	Oct	Nov	Dec
# Patient	66	67	65	65	67	65	65	65	63	63	64	60
# HBsAb >= 1.0	52	51	50	49	50	50	49	49	49	50	50	47
% HBsAb >= 1.0	79%	76%	77%	75%	75%	77%	75%	75%	78%	79%	78%	78%



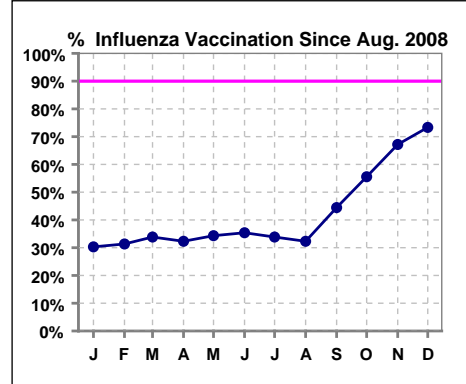
Pneumonia vaccination within the past five years at NKC

	Jan	Feb	Mar	Apr	May	Jun	Jul	Aug	Sep	Oct	Nov	Dec
# Patient	66	67	65	65	67	65	65	65	63	63	64	60
# Pneumonia	31	31	31	30	30	29	29	28	29	32	35	31
% Pneumonia	47%	46%	48%	46%	45%	45%	45%	43%	46%	51%	55%	52%



Influenza vaccination since August at NKC

	Jan	Feb	Mar	Apr	May	Jun	Jul	Aug	Sep	Oct	Nov	Dec
# Patient	66	67	65	65	67	65	65	65	63	63	64	60
# Influenza since 08/08	20	21	22	21	23	23	22	21	28	35	43	44
% Influenza	30%	31%	34%	32%	34%	35%	34%	32%	44%	56%	67%	73%



*Methodology: a) Monthly values based on patient's monthly average of all values present for the month; b) Quarter values are average of all values for quarter; c) Values not averaged use last value present at months end.