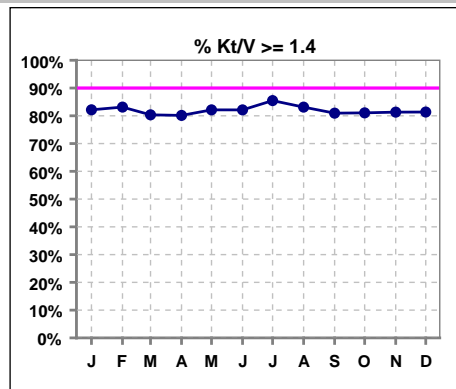
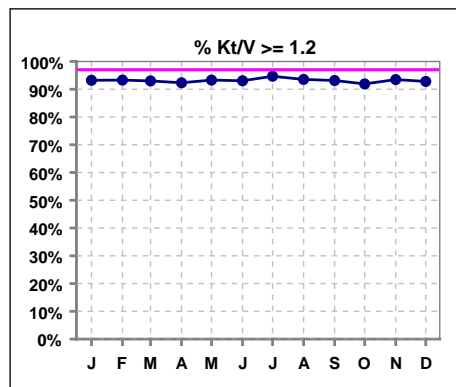


**I. ADEQUACY OF DIALYSIS**

	Jan	Feb	Mar	Apr	May	Jun	Jul	Aug	Sep	Oct	Nov	Dec
# Kt/V	1003	1014	1028	1017	1030	1035	1033	1037	1050	1040	1044	1057
# Kt/V >= 1.4	824	843	826	815	846	850	883	862	850	843	849	860
Pop. Mean	1.63	1.64	1.65	1.65	1.67	1.71	1.69	1.66	1.66	1.65	1.66	1.64
Std. Deviation	0.31	0.30	0.41	0.33	0.37	1.08	0.39	0.37	0.37	0.38	0.39	0.38
Network Mean '04	1.59	1.59	1.59	1.59	1.59	1.59	1.59	1.59	1.59	1.59	1.59	1.59
Natl. Mean '06	1.55	1.55	1.55	1.55	1.55	1.55	1.55	1.55	1.55	1.55	1.55	1.55
% Kt/V >= 1.4	82%	83%	80%	80%	82%	82%	85%	83%	81%	81%	81%	81%
Network % >= 1.2 '06	89%	89%	89%	89%	89%	89%	89%	89%	89%	89%	89%	89%
Natl. % >= 1.2 '06	90%	90%	90%	90%	90%	90%	90%	90%	90%	90%	90%	90%

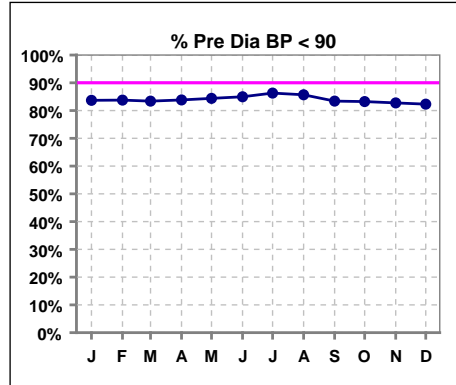


	Jan	Feb	Mar	Apr	May	Jun	Jul	Aug	Sep	Oct	Nov	Dec
# Kt/V	1003	1014	1028	1017	1030	1035	1033	1037	1050	1040	1044	1057
# Kt/V >= 1.2	935	946	956	939	961	963	978	970	978	956	976	981
Pop. Mean	1.63	1.64	1.65	1.65	1.67	1.71	1.69	1.66	1.66	1.65	1.66	1.64
Std. Deviation	0.31	0.30	0.41	0.33	0.37	1.08	0.39	0.37	0.37	0.38	0.39	0.38
Network Mean '04	1.59	1.59	1.59	1.59	1.59	1.59	1.59	1.59	1.59	1.59	1.59	1.59
Natl. Mean '06	1.55	1.55	1.55	1.55	1.55	1.55	1.55	1.55	1.55	1.55	1.55	1.55
% Kt/V >= 1.2	93%	93%	93%	92%	93%	93%	95%	94%	93%	92%	93%	93%
Network % >= 1.2 '06	89%	89%	89%	89%	89%	89%	89%	89%	89%	89%	89%	89%
Natl. % >= 1.2 '06	90%	90%	90%	90%	90%	90%	90%	90%	90%	90%	90%	90%

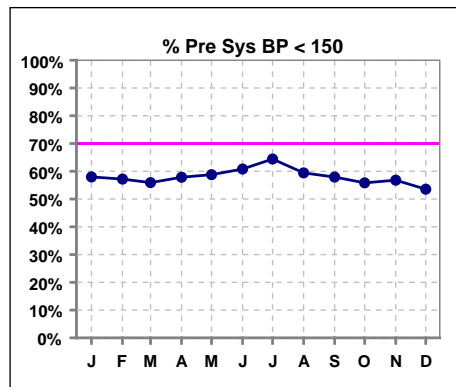


**Blood Pressure Control (Pre)**

	Jan	Feb	Mar	Apr	May	Jun	Jul	Aug	Sep	Oct	Nov	Dec
# Pre Dia BP	1030	1035	1048	1051	1070	1064	1065	1062	1079	1080	1067	1085
# Pre Dia BP < 90	862	867	874	881	903	904	919	910	900	899	883	893
Pop. Mean	77	76	77	76	76	75	75	76	76	77	77	77
Std. Deviation	14.6	13.8	14.0	14.0	13.8	13.8	14.0	13.6	14.3	14.1	14.5	14.3
Network Mean												
Natl. Mean												
% Pre Dia BP < 90	84%	84%	83%	84%	84%	85%	86%	86%	83%	83%	83%	82%



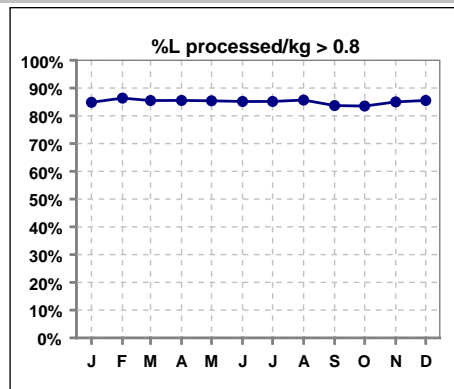
	Jan	Feb	Mar	Apr	May	Jun	Jul	Aug	Sep	Oct	Nov	Dec
# Pre Sys BP	1030	1035	1048	1051	1070	1064	1065	1062	1079	1080	1067	1085
# Pre Sys BP < 150	597	592	586	608	629	647	686	631	625	603	606	581
Pop. Mean	147	146	147	146	145	144	142	145	145	146	147	147
Std. Deviation	21.9	21.8	21.5	21.8	21.5	22.0	21.4	21.3	21.6	21.7	21.6	22.1
Network Mean												
Natl. Mean												
% Pre Sys BP < 150	58%	57%	56%	58%	59%	61%	64%	59%	58%	56%	57%	54%



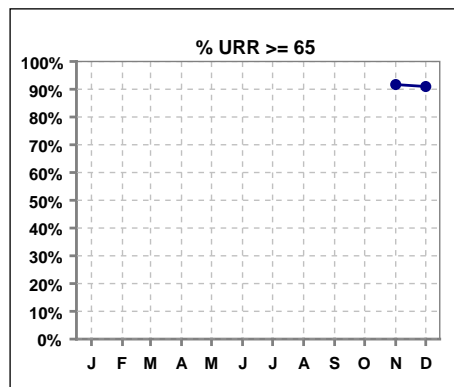
\*Methodology: a) Monthly values based on patient's monthly average of all values present for the month; b) Quarter values are average of all values for quarter; c) Values not averaged use last value present at months end.

**I. ADEQUACY OF DIALYSIS - CONT.**

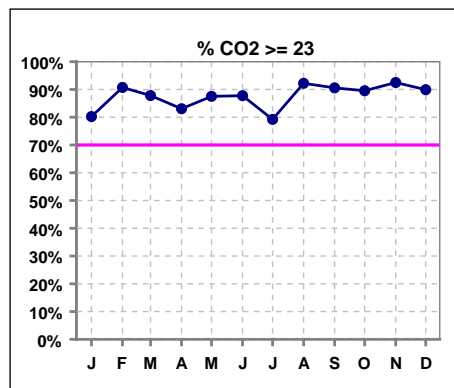
	Jan	Feb	Mar	Apr	May	Jun	Jul	Aug	Sep	Oct	Nov	Dec
# L processed/kg	1030	1035	1048	1051	1055	1064	1065	1061	1079	1080	1067	1085
# L processed/kg>0.8	874	894	896	899	901	906	907	909	903	902	907	928
Pop. Mean	1	1	1	1	1	1	1	1	1	1	1	1
Std. Deviation	0.3	0.3	0.3	0.3	0.3	0.3	0.3	0.3	0.3	0.3	0.3	0.3
Network Mean												
Natl. Mean												
<b>% L processed/kg&gt;0.8</b>	<b>85%</b>	<b>86%</b>	<b>85%</b>	<b>86%</b>	<b>85%</b>	<b>85%</b>	<b>85%</b>	<b>86%</b>	<b>84%</b>	<b>84%</b>	<b>85%</b>	<b>86%</b>



	Jan	Feb	Mar	Apr	May	Jun	Jul	Aug	Sep	Oct	Nov	Dec
# URR											1047	1064
# URR >= 65											960	968
Pop. Mean											74	74
Std. Deviation											6.83	6.92
Network Mean												
Natl. Mean												
<b>% URR &gt;= 65</b>											<b>92%</b>	<b>91%</b>



	Jan	Feb	Mar	Apr	May	Jun	Jul	Aug	Sep	Oct	Nov	Dec
# CO2	1012	1025	1042	1033	1042	1046	1049	1053	1072	1061	1054	1072
# CO2 >= 23	812	930	915	858	912	918	831	971	971	950	975	964
Pop. Mean	25	26	26	25	26	26	25	27	26	26	27	26
Std. Deviation	3.23	2.95	3.01	3.10	2.99	3.09	3.31	3.02	2.95	2.96	2.85	3.10
Network Mean												
Natl. Mean												
<b>% CO2 &gt;= 23</b>	<b>80%</b>	<b>91%</b>	<b>88%</b>	<b>83%</b>	<b>88%</b>	<b>88%</b>	<b>79%</b>	<b>92%</b>	<b>91%</b>	<b>90%</b>	<b>93%</b>	<b>90%</b>

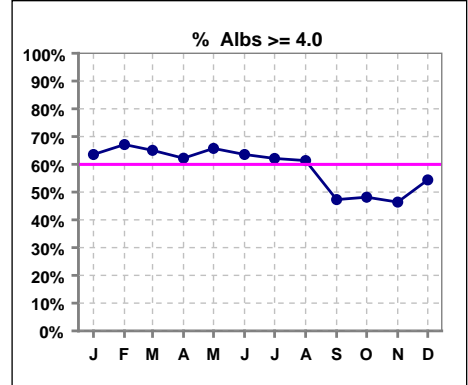


\*Methodology: a) Monthly values based on patient's monthly average of all values present for the month; b) Quarterly values are average of all values for quarter; c) Values not averaged use last value present at months end.

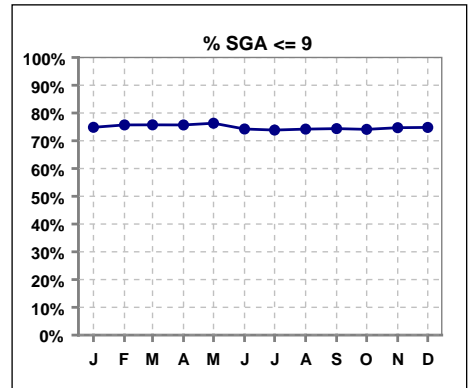
\*Albumin values use BCG method - as of July 2001

**II. NUTRITION**

	Jan	Feb	Mar	Apr	May	Jun	Jul	Aug	Sep	Oct	Nov	Dec
# Albumin	1012	1025	1041	1032	1042	1048	1048	1053	1072	1061	1054	1072
# Albumin >= 4.0	643	688	677	642	685	666	651	646	507	511	489	583
Pop. Mean	4.0	4.1	4.0	4.0	4.0	4.0	4.0	4.0	3.9	3.9	3.9	3.9
Std. Deviation	0.42	0.41	0.41	0.41	0.40	0.40	0.37	0.39	0.39	0.38	0.37	0.37
Network Mean	3.4	3.4	3.4	3.4	3.4	3.4	3.4	3.4	3.4	3.4	3.4	3.4
Natl. Mean	3.8	3.8	3.8	3.8	3.8	3.8	3.8	3.8	3.8	3.8	3.8	3.8
% Alb >= 3.5	91%	92%	91%	92%	93%	94%	93%	93%	89%	89%	89%	92%
% Alb >= 3.0	98%	98%	98%	98%	99%	98%	98%	98%	97%	98%	98%	99%
<b>% Alb &gt;= 4.0</b>	<b>64%</b>	<b>67%</b>	<b>65%</b>	<b>62%</b>	<b>66%</b>	<b>64%</b>	<b>62%</b>	<b>61%</b>	<b>47%</b>	<b>48%</b>	<b>46%</b>	<b>54%</b>
Netwk%>=3.5 '06	82%	82%	82%	82%	82%	82%	82%	82%	82%	82%	82%	82%
Netwk%>=4.0 '06	34%	34%	34%	34%	34%	34%	34%	34%	34%	34%	34%	34%
Natl % >= 3.5 '06	81%	81%	81%	81%	81%	81%	81%	81%	81%	81%	81%	81%
Natl. % >= 4.0 '06	34%	34%	34%	34%	34%	34%	34%	34%	34%	34%	34%	34%



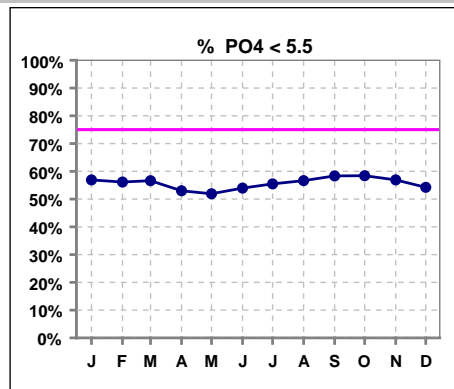
	Jan	Feb	Mar	Apr	May	Jun	Jul	Aug	Sep	Oct	Nov	Dec
# SGA	978	992	993	1008	1009	1017	1010	1023	1042	1035	1032	1044
# SGA <=9	732	751	752	763	770	755	746	759	775	767	771	781
Pop. Mean	7	8	7	7	7	8	8	8	8	8	8	8
Std. Deviation	4.9	5.1	5.0	4.9	4.9	4.9	4.9	5.0	4.5	4.5	4.4	4.4
Network Mean												
Natl. Mean												
<b>% SGA &lt;= 9</b>	<b>75%</b>	<b>76%</b>	<b>76%</b>	<b>76%</b>	<b>76%</b>	<b>74%</b>	<b>74%</b>	<b>74%</b>	<b>74%</b>	<b>74%</b>	<b>75%</b>	<b>75%</b>



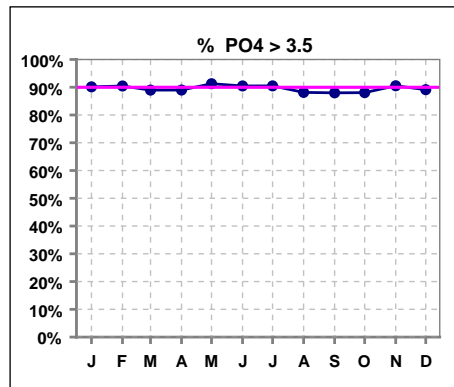
\*Methodology: a) Monthly values based on patient's monthly average of all values present for the month; b) Quarter values are average of all values for quarter; c) Values not averaged use last value present at months end.

**III. OSTEODYSTROPHY**

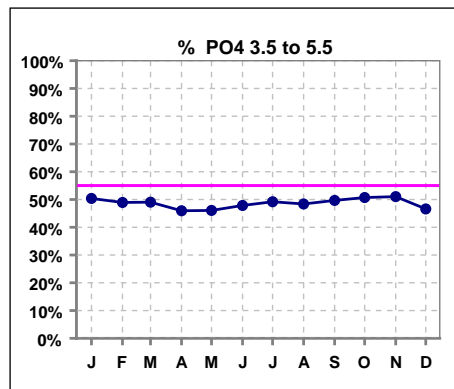
	Jan	Feb	Mar	Apr	May	Jun	Jul	Aug	Sep	Oct	Nov	Dec
# PO4	1014	1026	1042	1036	1042	1049	1051	1054	1073	1063	1056	1075
# PO4 < 5.5	577	576	590	549	541	566	583	597	626	621	601	583
Pop. Mean	5.3	5.4	5.4	5.5	5.5	5.5	5.4	5.4	5.3	5.3	5.4	5.4
Std. Deviation	1.56	1.49	1.55	1.63	1.56	1.60	1.59	1.60	1.58	1.63	1.57	1.55
Network Mean												
Natl. Mean '06	5	5	5	5	5	5	5	5	5	5	5	5
% PO4 < 5.5	57%	56%	57%	53%	52%	54%	55%	57%	58%	58%	57%	54%



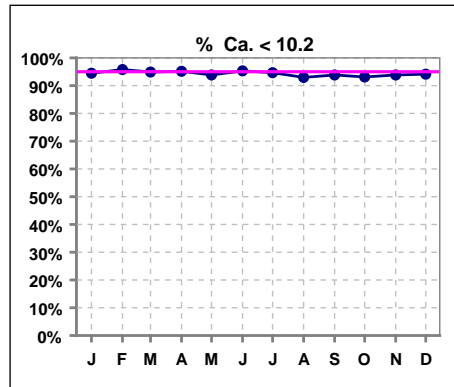
	Jan	Feb	Mar	Apr	May	Jun	Jul	Aug	Sep	Oct	Nov	Dec
# PO4	1014	1026	1042	1036	1042	1049	1051	1054	1073	1063	1056	1075
# PO4 > 3.5	914	928	927	922	951	949	951	929	944	936	956	958
Pop. Mean	5.3	5.4	5.4	5.5	5.5	5.5	5.4	5.4	5.3	5.3	5.4	5.4
Std. Deviation	1.56	1.49	1.55	1.63	1.56	1.60	1.59	1.60	1.58	1.63	1.57	1.55
Network Mean												
Natl. Mean '06	5	5	5	5	5	5	5	5	5	5	5	5
% PO4 > 3.5	90%	90%	89%	89%	91%	90%	90%	88%	88%	88%	91%	89%



	Jan	Feb	Mar	Apr	May	Jun	Jul	Aug	Sep	Oct	Nov	Dec
# PO4	1014	1026	1042	1036	1042	1049	1051	1054	1073	1063	1056	1075
# PO4 3.5 to 5.5	511	502	511	476	480	502	517	510	533	539	539	501
Pop. Mean	5.3	5.4	5.4	5.5	5.5	5.5	5.4	5.4	5.3	5.3	5.4	5.4
Std. Deviation	1.56	1.49	1.55	1.63	1.56	1.60	1.59	1.60	1.58	1.63	1.57	1.55
Network Mean												
% PO4 3.5 to 5.5	50%	49%	49%	46%	46%	48%	49%	48%	50%	51%	51%	47%



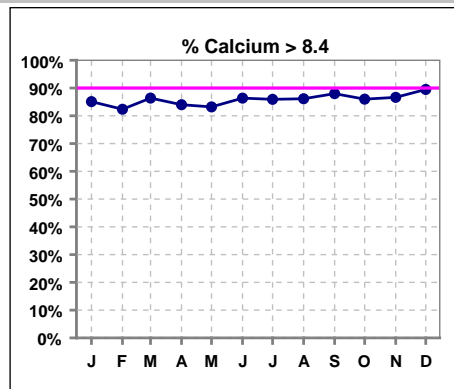
	Jan	Feb	Mar	Apr	May	Jun	Jul	Aug	Sep	Oct	Nov	Dec
# Calcium	1014	1026	1043	1037	1042	1049	1052	1054	1073	1064	1056	1075
# Calcium < 10.2	958	983	990	987	978	1000	996	980	1007	991	991	1012
Pop. Mean	9.1	9.0	9.2	9.1	9.1	9.1	9.2	9.2	9.2	9.2	9.2	9.2
Std. Deviation	0.70	0.71	0.71	0.73	0.75	0.69	0.72	0.76	0.74	0.74	0.71	0.68
Network Mean												
Natl. Mean '06	9	9	9	9	9	9	9	9	9	9	9	9
% Ca < 10.2	94%	96%	95%	95%	94%	95%	95%	93%	94%	93%	94%	94%



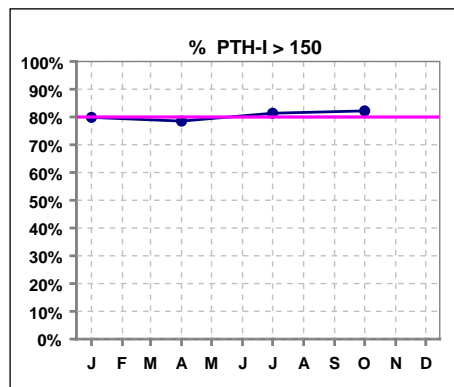
\*Methodology: a) Monthly values based on patient's monthly average of all values present for the month; b) Quarter values are average of all values for quarter; c) Values not averaged use last value present at months end.

**III. OSTEODYSTROPHY - CONT.**

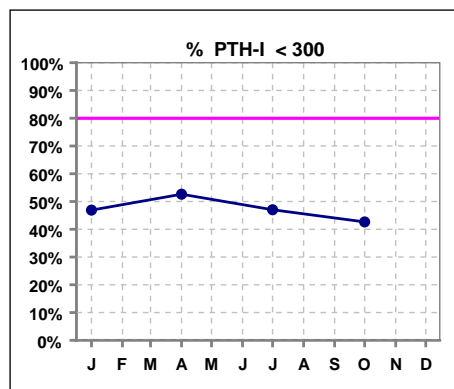
	Jan	Feb	Mar	Apr	May	Jun	Jul	Aug	Sep	Oct	Nov	Dec
# Calcium	1014	1026	1043	1037	1042	1049	1052	1054	1073	1064	1056	1075
# Calcium > 8.4	863	845	901	871	867	906	904	908	944	915	915	962
Pop. Mean	9.1	9.0	9.2	9.1	9.1	9.1	9.2	9.2	9.2	9.2	9.2	9.2
Std. Deviation	0.70	0.71	0.71	0.73	0.75	0.69	0.72	0.76	0.74	0.74	0.71	0.68
Network Mean												
Natl. Mean '06	9	9	9	9	9	9	9	9	9	9	9	9
% Calcium > 8.4	85%	82%	86%	84%	83%	86%	86%	86%	88%	86%	87%	89%



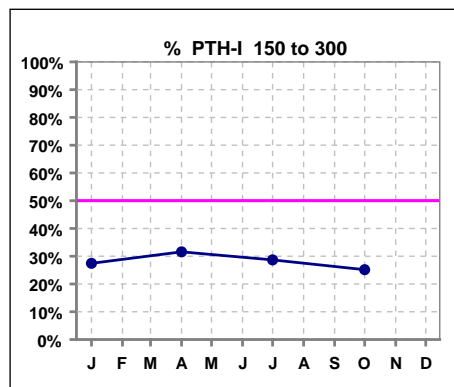
	Jan	Feb	Mar	Apr	May	Jun	Jul	Aug	Sep	Oct	Nov	Dec
# PTH-I	1013			931			1046			966		
# PTH-I > 150	809			731			851			794		
Pop. Mean	456			413			446			483		
Std. Deviation	470			477			463			478		
Network Mean												
Natl. Mean												
% PTH-I > 150	80%			79%			81%			82%		



	Jan	Feb	Mar	Apr	May	Jun	Jul	Aug	Sep	Oct	Nov	Dec
# PTH-I	1013			931			1046			966		
# PTH-I < 300	475			490			492			412		
Pop. Mean	456			413			446			483		
Std. Deviation	470			477			463			478		
Network Mean												
Natl. Mean												
% PTH-I < 300	47%			53%			47%			43%		



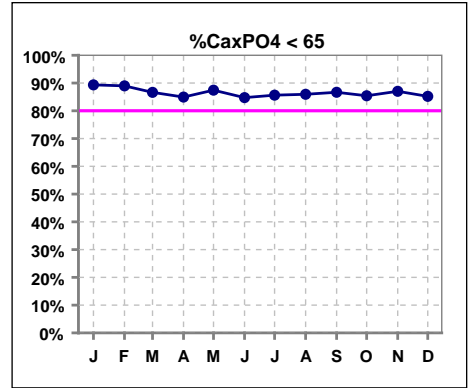
	Jan	Feb	Mar	Apr	May	Jun	Jul	Aug	Sep	Oct	Nov	Dec
# PTH-I	1013			931			1046			966		
# PTH-I 150 to 300	278			294			300			243		
Pop. Mean	456			413			446			483		
Std. Deviation	470			477			463			478		
Network Mean												
Natl. Mean												
% PTH-I 150 to 300	27%			32%			29%			25%		



\*Methodology: a) Monthly values based on patient's monthly average of all values present for the month; b) Quarterly values are average of all values for quarter; c) Values not averaged use last value present at months end.

**III. OSTEODYSTROPHY - CONT.**

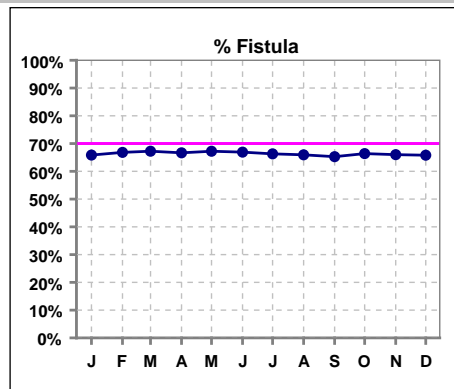
	Jan	Feb	Mar	Apr	May	Jun	Jul	Aug	Sep	Oct	Nov	Dec
# Ca x PO4	1013	1026	1041	1036	1042	1049	1051	1053	1073	1063	1056	1075
# Ca x PO4 < 65	905	913	902	880	911	889	900	905	930	908	919	916
Pop. Mean	48.7	48.8	49.5	50.1	50.0	50.2	49.7	49.8	48.9	49.0	49.5	50.5
Std. Deviation	14.5	14.1	14.8	15.4	14.6	15.1	15.3	15.3	15.2	15.5	15.1	15.4
Network Mean												
Natl. Mean												
<b>% Ca x PO4 &lt; 65</b>	<b>89%</b>	<b>89%</b>	<b>87%</b>	<b>85%</b>	<b>87%</b>	<b>85%</b>	<b>86%</b>	<b>86%</b>	<b>87%</b>	<b>85%</b>	<b>87%</b>	<b>85%</b>



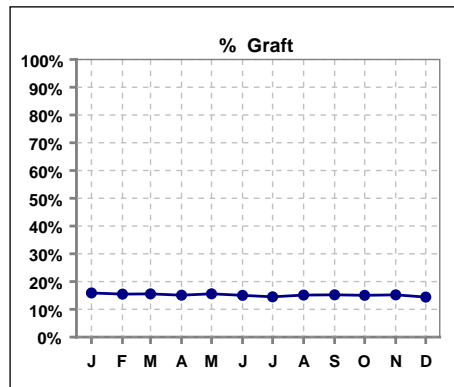
\*Methodology: a) Monthly values based on patient's monthly average of all values present for the month; b) Quarter values are average of all values for quarter; c) Values not averaged use last value present at months end.

**IV. ACCESS**

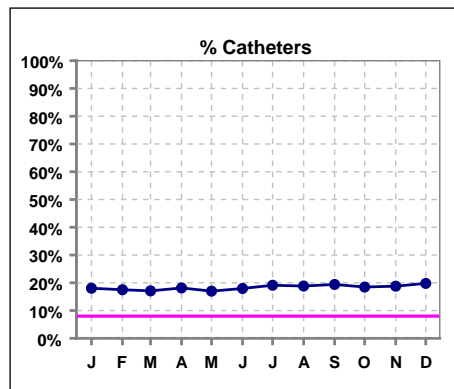
	Jan	Feb	Mar	Apr	May	Jun	Jul	Aug	Sep	Oct	Nov	Dec
# Access	1031	1034	1047	1047	1065	1064	1062	1057	1077	1077	1065	1082
# Fistula	679	691	704	698	716	712	704	697	703	715	703	712
Network % '06	61%	61%	61%	61%	61%	61%	61%	61%	61%	61%	61%	61%
Natl. % '06	45%	45%	45%	45%	45%	45%	45%	45%	45%	45%	45%	45%
% Fistula	66%	67%	67%	67%	67%	67%	66%	66%	65%	66%	66%	66%



	Jan	Feb	Mar	Apr	May	Jun	Jul	Aug	Sep	Oct	Nov	Dec
# Access	1031	1034	1047	1047	1065	1064	1062	1057	1077	1077	1065	1082
# Graft	164	160	163	158	166	160	154	160	164	162	162	156
Network %												
Natl. %												
% Graft	16%	15%	16%	15%	16%	15%	15%	15%	15%	15%	15%	14%

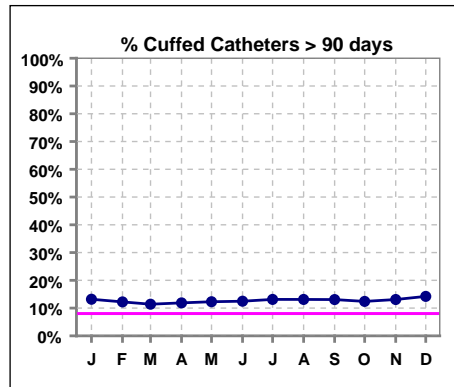


	Jan	Feb	Mar	Apr	May	Jun	Jul	Aug	Sep	Oct	Nov	Dec
# Access	1031	1034	1047	1047	1065	1064	1062	1057	1077	1077	1065	1082
# Catheters	186	181	179	190	181	191	203	199	209	199	200	214
Network % '06	22%	22%	22%	22%	22%	22%	22%	22%	22%	22%	22%	22%
Natl. % '06	29%	29%	29%	29%	29%	29%	29%	29%	29%	29%	29%	29%
% Catheters	18%	18%	17%	18%	17%	18%	19%	19%	19%	18%	19%	20%



**Cuffed Catheters > 90 days**

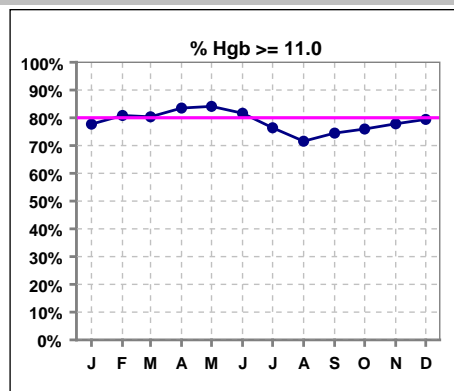
	Jan	Feb	Mar	Apr	May	Jun	Jul	Aug	Sep	Oct	Nov	Dec
# Access	1031	1034	1047	1047	1065	1064	1062	1057	1077	1077	1065	1082
# Cuffed Catheters	127	118	110	114	121	123	129	128	129	123	130	144
Network % '06	22%	22%	22%	22%	22%	22%	22%	22%	22%	22%	22%	22%
Natl. % '06	29%	29%	29%	29%	29%	29%	29%	29%	29%	29%	29%	29%
% Cuffed Catheters	13%	12%	11%	12%	12%	12%	13%	13%	13%	12%	13%	14%



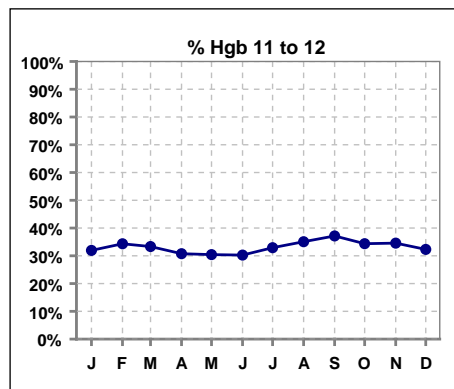
\*Methodology: a) Monthly values based on patient's monthly average of all values present for the month; b) Quarter values are average of all values for quarter; c) Values not averaged use last value present at months end.

**V. ANEMIA**

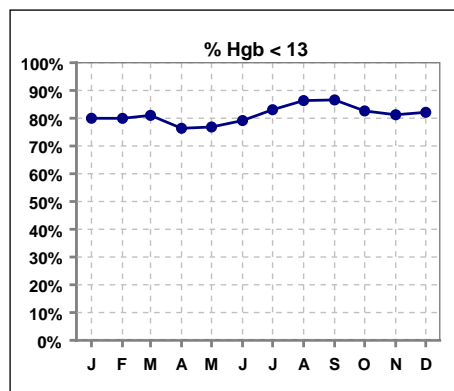
	Jan	Feb	Mar	Apr	May	Jun	Jul	Aug	Sep	Oct	Nov	Dec
# Hgb	1014	1028	1044	1037	1045	1051	1051	1055	1074	1065	1056	1074
# Hgb >= 11.0	788	831	839	866	879	858	803	755	800	809	822	853
Pop. Mean	11.9	11.9	12.0	12.1	12.1	12.0	11.8	11.7	11.7	11.8	11.8	11.9
Std. Deviation	1.3	1.3	1.3	1.3	1.3	1.3	1.3	1.3	1.3	1.3	1.3	1.3
Network Mean	11.8	11.8	11.8	11.8	11.8	11.8	11.8	11.8	11.8	11.8	11.8	11.8
Natl. Mean '06	12	12	12	12	12	12	12	12	12	12	12	12
<b>% Hgb &gt;= 11.0</b>	<b>78%</b>	<b>81%</b>	<b>80%</b>	<b>84%</b>	<b>84%</b>	<b>82%</b>	<b>76%</b>	<b>72%</b>	<b>74%</b>	<b>76%</b>	<b>78%</b>	<b>79%</b>
<b>% Hgb &lt;= 11.0</b>	<b>24%</b>	<b>20%</b>	<b>20%</b>	<b>17%</b>	<b>17%</b>	<b>20%</b>	<b>25%</b>	<b>30%</b>	<b>26%</b>	<b>25%</b>	<b>23%</b>	<b>22%</b>
<b>% Netwk &gt;= 11 '06</b>	<b>87%</b>	<b>87%</b>	<b>87%</b>	<b>87%</b>	<b>87%</b>	<b>87%</b>	<b>87%</b>	<b>87%</b>	<b>87%</b>	<b>87%</b>	<b>87%</b>	<b>87%</b>
<b>% Natl. &gt;= 11 '06</b>	<b>84%</b>	<b>84%</b>	<b>84%</b>	<b>84%</b>	<b>84%</b>	<b>84%</b>	<b>84%</b>	<b>84%</b>	<b>84%</b>	<b>84%</b>	<b>84%</b>	<b>84%</b>



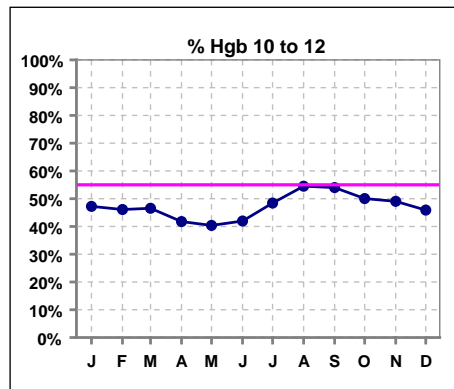
	Jan	Feb	Mar	Apr	May	Jun	Jul	Aug	Sep	Oct	Nov	Dec
# Hgb	1014	1028	1044	1037	1045	1051	1051	1055	1074	1065	1056	1074
# Hgb 11 to 12	324	353	348	319	318	318	346	370	399	366	365	347
Pop. Mean	11.9	11.9	12.0	12.1	12.1	12.0	11.8	11.7	11.7	11.8	11.8	11.9
Std. Deviation	1.3	1.3	1.3	1.3	1.3	1.3	1.3	1.3	1.3	1.3	1.3	1.3
Network Mean	11.8	11.8	11.8	11.8	11.8	11.8	11.8	11.8	11.8	11.8	11.8	11.8
Natl. Mean '06	12	12	12	12	12	12	12	12	12	12	12	12
<b>% Hgb 11 to 12</b>	<b>32%</b>	<b>34%</b>	<b>33%</b>	<b>31%</b>	<b>30%</b>	<b>30%</b>	<b>33%</b>	<b>35%</b>	<b>37%</b>	<b>34%</b>	<b>35%</b>	<b>32%</b>



	Jan	Feb	Mar	Apr	May	Jun	Jul	Aug	Sep	Oct	Nov	Dec
# Hgb	1014	1028	1044	1037	1045	1051	1051	1055	1074	1065	1056	1074
# Hgb < 13	811	822	846	792	803	832	873	911	930	880	858	882
Pop. Mean	11.9	11.9	12.0	12.1	12.1	12.0	11.8	11.7	11.7	11.8	11.8	11.9
Std. Deviation	1.3	1.3	1.3	1.3	1.3	1.3	1.3	1.3	1.3	1.3	1.3	1.3
Network Mean	11.8	11.8	11.8	11.8	11.8	11.8	11.8	11.8	11.8	11.8	11.8	11.8
<b>% Hgb &lt; 13</b>	<b>80%</b>	<b>80%</b>	<b>81%</b>	<b>76%</b>	<b>77%</b>	<b>79%</b>	<b>83%</b>	<b>86%</b>	<b>87%</b>	<b>83%</b>	<b>81%</b>	<b>82%</b>



	Jan	Feb	Mar	Apr	May	Jun	Jul	Aug	Sep	Oct	Nov	Dec
# Hgb	1014	1028	1044	1037	1045	1051	1051	1055	1074	1065	1056	1074
# Hgb 10 to 12	479	474	486	433	422	441	509	575	580	533	518	493
Pop. Mean	11.9	11.9	12.0	12.1	12.1	12.0	11.8	11.7	11.7	11.8	11.8	11.9
Std. Deviation	1.3	1.3	1.3	1.3	1.3	1.3	1.3	1.3	1.3	1.3	1.3	1.3
Network Mean	11.8	11.8	11.8	11.8	11.8	11.8	11.8	11.8	11.8	11.8	11.8	11.8
<b>% Hgb 10 to 12</b>	<b>47%</b>	<b>46%</b>	<b>47%</b>	<b>42%</b>	<b>40%</b>	<b>42%</b>	<b>48%</b>	<b>55%</b>	<b>54%</b>	<b>50%</b>	<b>49%</b>	<b>46%</b>

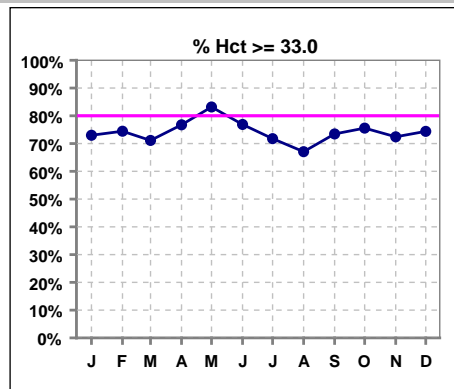


\*Methodology: a) Monthly values based on patient's monthly average of all values present for the month; b) Quarter values are average of all values for quarter; c) Values not averaged use last value present at months end.



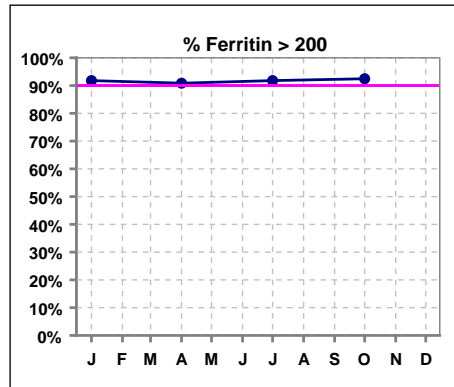
**V. ANEMIA - CONT.**

	Jan	Feb	Mar	Apr	May	Jun	Jul	Aug	Sep	Oct	Nov	Dec
# Hct	1018	1029	1046	1041	1046	1051	1052	1060	1078	1064	1059	1074
# Hct >= 33.0	743	766	744	799	870	808	755	711	792	804	767	799
Pop. Mean	35	35	35	35	36	35	35	35	35	35	35	35
Std. Deviation	3.89	3.90	3.78	3.91	3.89	3.92	3.92	3.96	3.77	3.97	3.76	3.74
Network Mean												
Natl. Mean												
<b>% Hct &gt;= 33.0</b>	<b>73%</b>	<b>74%</b>	<b>71%</b>	<b>77%</b>	<b>83%</b>	<b>77%</b>	<b>72%</b>	<b>67%</b>	<b>73%</b>	<b>76%</b>	<b>72%</b>	<b>74%</b>
<b>% Netwk &gt;= 33 '05</b>	<b>94%</b>	<b>94%</b>	<b>94%</b>	<b>94%</b>	<b>94%</b>	<b>94%</b>	<b>94%</b>	<b>94%</b>	<b>94%</b>	<b>94%</b>	<b>94%</b>	<b>94%</b>
<b>% Natl. &gt;= 33 '05</b>	<b>92%</b>	<b>92%</b>	<b>92%</b>	<b>92%</b>	<b>92%</b>	<b>92%</b>	<b>92%</b>	<b>92%</b>	<b>92%</b>	<b>92%</b>	<b>92%</b>	<b>92%</b>

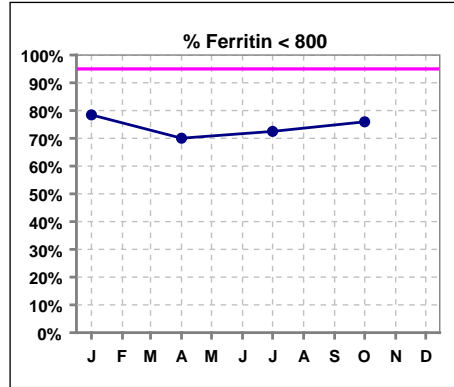


**Iron Profile**

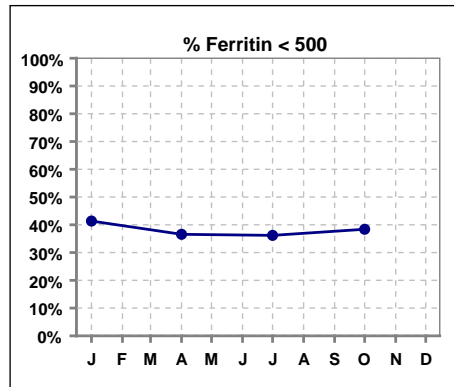
	Jan	Feb	Mar	Apr	May	Jun	Jul	Aug	Sep	Oct	Nov	Dec
# Ferritin	1011			1028			1047			1060		
# Ferritin > 200	928			934			961			980		
Pop. Mean	599			651			637			616		
Std. Deviation	323			400			359			332		
Network Mean												
Natl. Mean '06	583			583			583			583		
<b>% Ferritin &gt; 200</b>	<b>92%</b>			<b>91%</b>			<b>92%</b>			<b>92%</b>		
<b>% Netwk &gt;= 100 '06</b>	<b>93%</b>			<b>93%</b>								
<b>% Natl. &gt;=100 '06</b>	<b>95%</b>			<b>95%</b>								



	Jan	Feb	Mar	Apr	May	Jun	Jul	Aug	Sep	Oct	Nov	Dec
# Ferritin	1011			1028			1047			1060		
# Ferritin < 800	793			720			759			805		
Pop. Mean	599			651			637			616		
Std. Deviation	323			400			359			332		
Network Mean												
Natl. Mean '06	583			583			583			583		
<b>% Ferritin &lt; 800</b>	<b>78%</b>			<b>70%</b>			<b>72%</b>			<b>76%</b>		



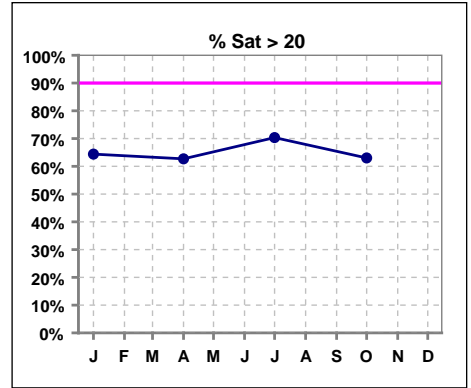
	Jan	Feb	Mar	Apr	May	Jun	Jul	Aug	Sep	Oct	Nov	Dec
# Ferritin	1011			1028			1047			1060		
# Ferritin < 500	418			376			379			407		
Pop. Mean	599			651			637			616		
Std. Deviation	323			400			359			332		
Network Mean												
<b>% Ferritin &lt; 500</b>	<b>41%</b>			<b>37%</b>			<b>36%</b>			<b>38%</b>		



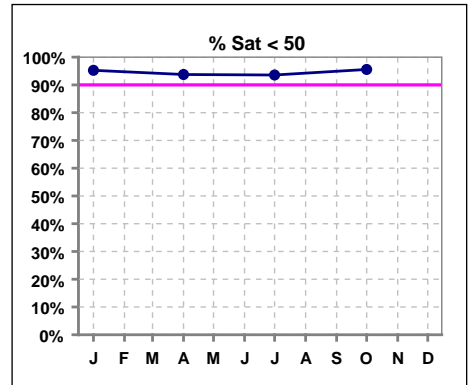
\*Methodology: a) Monthly values based on patient's monthly average of all values present for the month; b) Quarter values are average of all values for quarter; c) Values not averaged use last value present at months end.

**V. ANEMIA - CONT.**

	Jan	Feb	Mar	Apr	May	Jun	Jul	Aug	Sep	Oct	Nov	Dec
# % Sat	1011			1024			1042			1060		
# % Sat > 20	651			642			733			668		
Pop. Mean	26			26			28			26		
Std. Deviation	13			13			14			12		
Network Mean												
Natl. Mean '06	28			28			28			28		
<b>% Sat% &gt; 20</b>	64%			63%			70%			63%		
<b>% Netwk &gt;= 20 '06</b>	74%			74%			74%			74%		
<b>% Natl. &gt;=20 '06</b>	79%			79%			79%			79%		



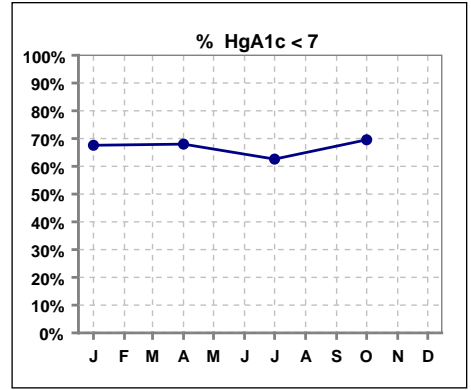
	Jan	Feb	Mar	Apr	May	Jun	Jul	Aug	Sep	Oct	Nov	Dec
# % Sat	1011			1024			1042			1060		
# % Sat < 50	963			960			975			1013		
Pop. Mean	26			26			28			26		
Std. Deviation	13			13			14			12		
Network Mean												
Natl. Mean '06	28			28			28			28		
<b>% Sat% &lt; 50</b>	95%			94%			94%			96%		



\*Methodology: a) Monthly values based on patient's monthly average of all values present for the month; b) Quarter values are average of all values for quarter; c) Values not averaged use last value present at months end.

**VI. Diabetes**

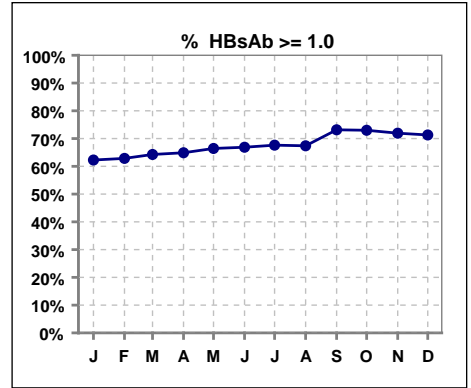
	Jan	Feb	Mar	Apr	May	Jun	Jul	Aug	Sep	Oct	Nov	Dec
# HgA1c	512			503			524			552		
# HgA1c < 7	346			342			328			384		
Pop. Mean	6.6			6.6			6.7			6.5		
Std. Deviation	1.35			1.33			1.31			1.33		
Network Mean												
Natl. Mean												
<b>% HgA1c &lt; 7</b>	<b>68%</b>			<b>68%</b>			<b>63%</b>			<b>70%</b>		



\*Methodology: a) Monthly values based on patient's monthly average of all values present for the month; b) Quarter values are average of all values for quarter; c) Values not averaged use last value present at months end.

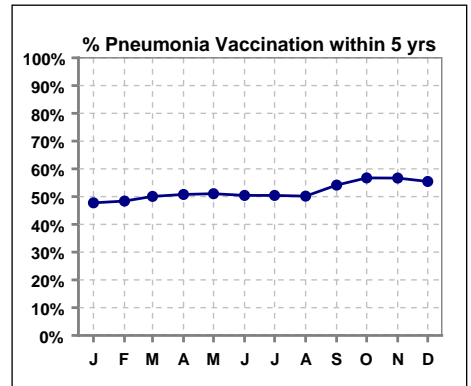
**VII. Infection Control**

	Jan	Feb	Mar	Apr	May	Jun	Jul	Aug	Sep	Oct	Nov	Dec
# Patient	1206	1209	1178	1162	1144	1156	1152	1156	1084	1070	1062	1073
# HBsAb >= 1.0	751	760	757	754	760	773	779	779	793	781	764	765
% HBsAb >= 1.0	62%	63%	64%	65%	66%	67%	68%	67%	73%	73%	72%	71%



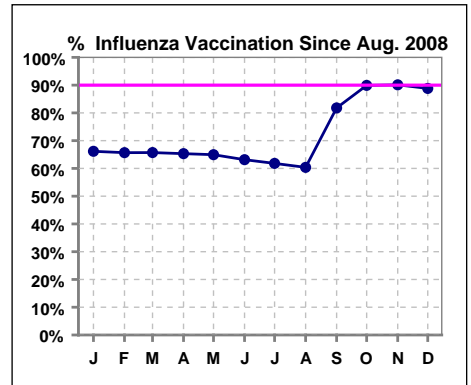
**Pneumonia vaccination within the past five years at NKC**

	Jan	Feb	Mar	Apr	May	Jun	Jul	Aug	Sep	Oct	Nov	Dec
# Patient	1206	1209	1178	1162	1144	1156	1152	1156	1084	1070	1062	1073
# Pneumonia	576	585	590	590	584	583	581	580	587	607	602	595
% Pneumonia	48%	48%	50%	51%	51%	50%	50%	50%	54%	57%	57%	55%



**Influenza vaccination since August at NKC**

	Jan	Feb	Mar	Apr	May	Jun	Jul	Aug	Sep	Oct	Nov	Dec
# Patient	1206	1209	1178	1162	1144	1156	1152	1156	1104	1070	1062	1073
# Influenza since 08/08	798	794	774	759	743	730	712	698	903	962	957	953
% Influenza	66%	66%	66%	65%	65%	63%	62%	60%	82%	90%	90%	89%



\*Methodology: a) Monthly values based on patient's monthly average of all values present for the month; b) Quarter values are average of all values for quarter; c) Values not averaged use last value present at months end.