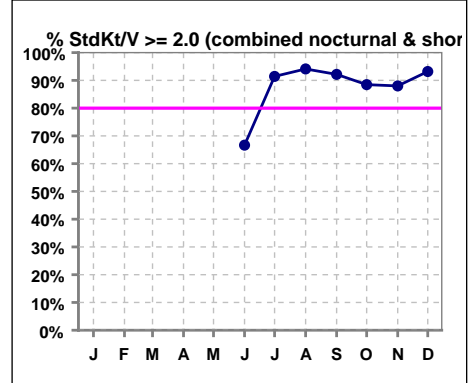


**I. ADEQUACY OF DIALYSIS**

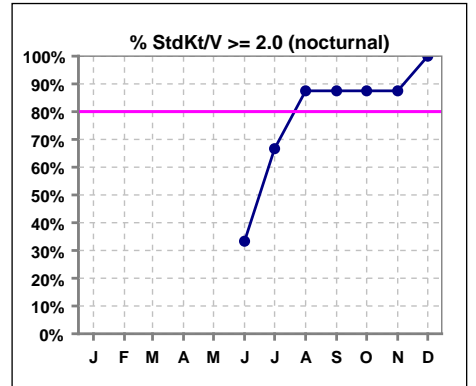
**Combined standard nocturnal/short daily**

	Jan	Feb	Mar	Apr	May	Jun	Jul	Aug	Sep	Oct	Nov	Dec
# StdKt/V						9	35	51	51	52	50	44
# StdKt/V >= 2.0						6	32	48	47	46	44	41
Pop. Mean						2.37	3.02	3.18	3.10	2.98	2.92	3.01
Std. Deviation						0.55	0.78	0.89	0.80	0.80	0.81	0.84
Network Mean												
Natl. Mean '06												
<b>% StdKt/V &gt;= 2.0</b>						<b>67%</b>	<b>91%</b>	<b>94%</b>	<b>92%</b>	<b>88%</b>	<b>88%</b>	<b>93%</b>



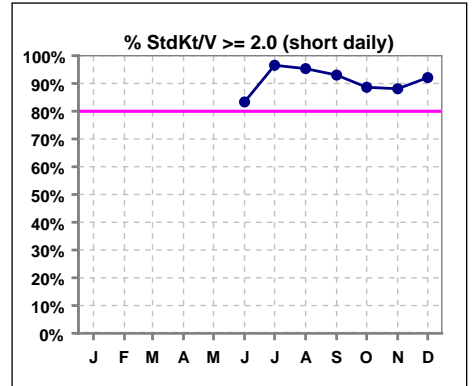
**Standard nocturnal**

	Jan	Feb	Mar	Apr	May	Jun	Jul	Aug	Sep	Oct	Nov	Dec
# StdKt/V						3	6	8	8	8	8	6
# StdKt/V >= 2.0						1	4	7	7	7	7	6
Pop. Mean						2.27	3.02	3.55	3.53	3.44	3.22	3.34
Std. Deviation						0.72	0.99	1.67	1.66	1.51	1.39	1.55
Network Mean												
Natl. Mean '06												
<b>% StdKt/V &gt;= 2.0</b>						<b>33%</b>	<b>67%</b>	<b>88%</b>	<b>88%</b>	<b>88%</b>	<b>88%</b>	<b>100%</b>



**Standard short daily**

	Jan	Feb	Mar	Apr	May	Jun	Jul	Aug	Sep	Oct	Nov	Dec
# StdKt/V						6	29	43	43	44	42	38
# StdKt/V >= 2.0						5	28	41	40	39	37	35
Pop. Mean						2.43	3.02	3.11	3.02	2.90	2.86	2.96
Std. Deviation						0.51	0.76	0.67	0.52	0.58	0.66	0.69
Network Mean												
Natl. Mean '06												
<b>% StdKt/V &gt;= 2.0</b>						<b>83%</b>	<b>97%</b>	<b>95%</b>	<b>93%</b>	<b>89%</b>	<b>88%</b>	<b>92%</b>



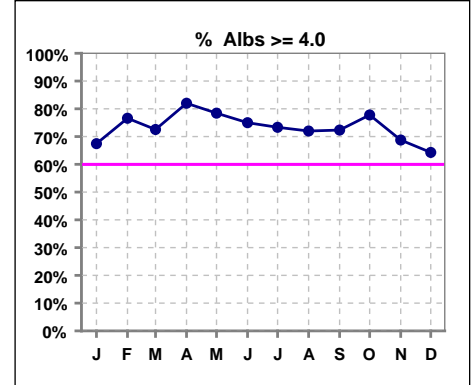
\*Methodology: a) Monthly values based on patient's monthly average of all values present for the month; b) Quarter values are average of all values for quarter; c) Values not averaged use last value present at months end.

**Northwest Kidney Centers - Home Hemodialysis - Patients Running Daily**  
 Quality Assurance Reports (Excludes patients in first 3 months of treatment)  
 Through period ending Dec. 31, 2009

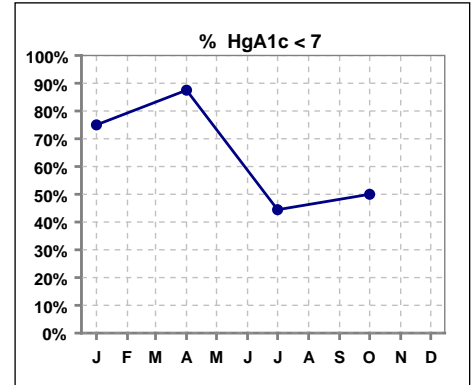
\*Albumin values use BCG method - as of July 2001

**II. NUTRITION**

	Jan	Feb	Mar	Apr	May	Jun	Jul	Aug	Sep	Oct	Nov	Dec
# Albumin	43	47	51	50	51	48	45	50	47	45	48	42
# Albumin >= 4.0				41	40	36	33	36	34	35	33	27
# Albumin >= 3.5	42	46	49									
Pop. Mean	4.1	4.2	4.2	4.3	4.2	4.2	4.2	4.2	4.1	4.2	4.1	4.1
Std. Deviation	0.27	0.33	0.35	0.35	0.38	0.39	0.43	0.42	0.37	0.35	0.41	0.39
Network Mean	3.4	3.4	3.4	3.4	3.4	3.4	3.4	3.4	3.4	3.4	3.4	3.4
Natl. Mean	3.8	3.8	3.8	3.8	3.8	3.8	3.8	3.8	3.8	3.8	3.8	3.8
% Alb >= 3.5	98%	98%	96%	98%	96%	96%	93%	94%	91%	98%	92%	98%
% Alb >= 3.0	100%	100%	100%	100%	100%	100%	100%	100%	100%	100%	100%	100%
<b>% Alb &gt;= 4.0</b>	<b>67%</b>	<b>77%</b>	<b>73%</b>	<b>82%</b>	<b>78%</b>	<b>75%</b>	<b>73%</b>	<b>72%</b>	<b>72%</b>	<b>78%</b>	<b>69%</b>	<b>64%</b>
Netwk%>=3.5 '06	82%	82%	82%	82%	82%	82%	82%	82%	82%	82%	82%	82%
Netwk%>=4.0 '06	34%	34%	34%	34%	34%	34%	34%	34%	34%	34%	34%	34%
Natl % >= 3.5 '06	81%	81%	81%	81%	81%	81%	81%	81%	81%	81%	81%	81%
Natl. % >= 4.0 '06	34%	34%	34%	34%	34%	34%	34%	34%	34%	34%	34%	34%



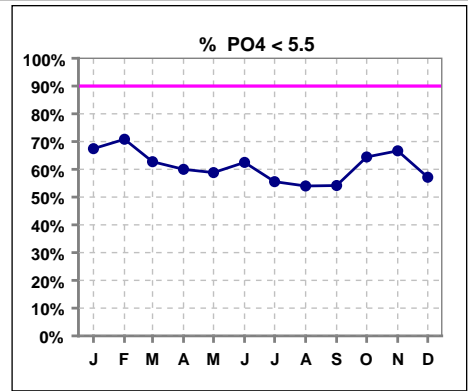
	Jan	Feb	Mar	Apr	May	Jun	Jul	Aug	Sep	Oct	Nov	Dec
# HgA1c	8			8			9			10		
# HgA1c < 7	6			7			4			5		
Pop. Mean	6.7			6.2			6.9			6.5		
Std. Deviation	1.54			1.41			1.35			1.03		
Network Mean												
Natl. Mean												
<b>% HgA1c &lt; 7</b>	<b>75%</b>			<b>88%</b>			<b>44%</b>			<b>50%</b>		



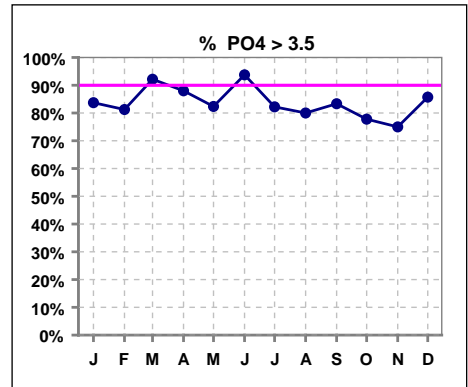
\*Methodology: a) Monthly values based on patient's monthly average of all values present for the month; b) Quarter values are average of all values for quarter; c) Values not averaged use last value present at months end.

**III. OSTEODYSTROPHY**

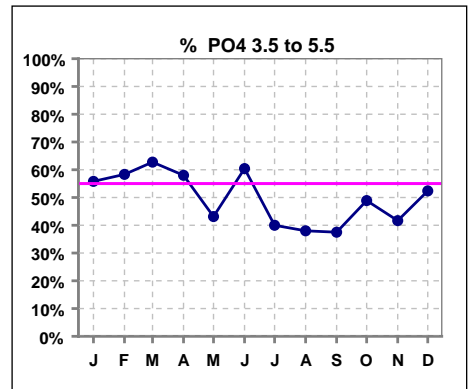
	Jan	Feb	Mar	Apr	May	Jun	Jul	Aug	Sep	Oct	Nov	Dec
# PO4	43	48	51	50	51	48	45	50	48	45	48	42
# PO4 < 5.5	29	34	32	30	30	30	25	27	26	29	32	24
Pop. Mean	5.0	5.1	5.2	5.2	5.2	5.3	5.4	5.2	5.3	4.8	5.0	5.3
Std. Deviation	1.37	1.58	1.37	1.54	1.47	1.62	1.79	1.73	1.82	1.44	1.77	1.48
Network Mean												
Natl. Mean '06	5	5	5	5	5	5	5	5	5	5	5	5
% PO4 < 5.5	67%	71%	63%	60%	59%	63%	56%	54%	54%	64%	67%	57%



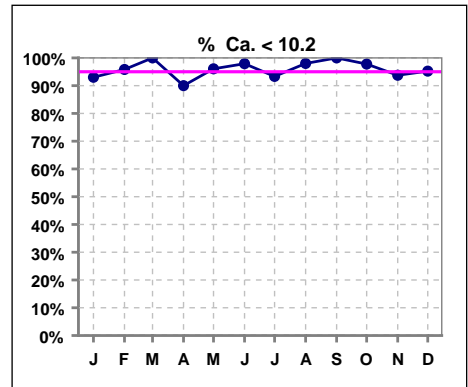
	Jan	Feb	Mar	Apr	May	Jun	Jul	Aug	Sep	Oct	Nov	Dec
# PO4	43	48	51	50	51	48	45	50	48	45	48	42
# PO4 > 3.5	36	39	47	44	42	45	37	40	40	35	36	36
Pop. Mean	5.0	5.1	5.2	5.2	5.2	5.3	5.4	5.2	5.3	4.8	5.0	5.3
Std. Deviation	1.37	1.58	1.37	1.54	1.47	1.62	1.79	1.73	1.82	1.44	1.77	1.48
Network Mean												
Natl. Mean '06	5	5	5	5	5	5	5	5	5	5	5	5
% PO4 > 3.5	84%	81%	92%	88%	82%	94%	82%	80%	83%	78%	75%	86%



	Jan	Feb	Mar	Apr	May	Jun	Jul	Aug	Sep	Oct	Nov	Dec
# PO4	43	48	51	50	51	48	45	50	48	45	48	42
# PO4 3.5 to 5.5	24	28	32	29	22	29	18	19	18	22	20	22
Pop. Mean	5.0	5.1	5.2	5.2	5.2	5.3	5.4	5.2	5.3	4.8	5.0	5.3
Std. Deviation	1.37	1.58	1.37	1.54	1.47	1.62	1.79	1.73	1.82	1.44	1.77	1.48
Network Mean												
Natl. Mean '06	5	5	5	5	5	5	5	5	5	5	5	5
% PO4 3.5 to 5.5	56%	58%	63%	58%	43%	60%	40%	38%	38%	49%	42%	52%



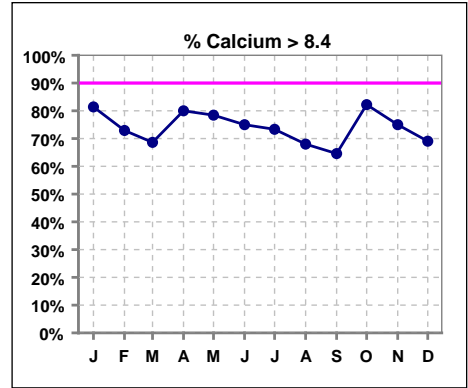
	Jan	Feb	Mar	Apr	May	Jun	Jul	Aug	Sep	Oct	Nov	Dec
# Calcium	43	48	51	50	51	48	45	50	48	45	48	42
# Calcium < 10.2	40	46	51	45	49	47	42	49	48	44	45	40
Pop. Mean	9.0	8.8	8.9	9.0	9.0	8.9	8.9	8.8	8.8	8.9	8.9	8.9
Std. Deviation	0.85	0.70	0.68	0.80	0.90	0.70	0.87	0.84	0.76	0.73	0.70	0.71
Network Mean												
Natl. Mean '06	9	9	9	9	9	9	9	9	9	9	9	9
% Ca < 10.2	93%	96%	100%	90%	96%	98%	93%	98%	100%	98%	94%	95%



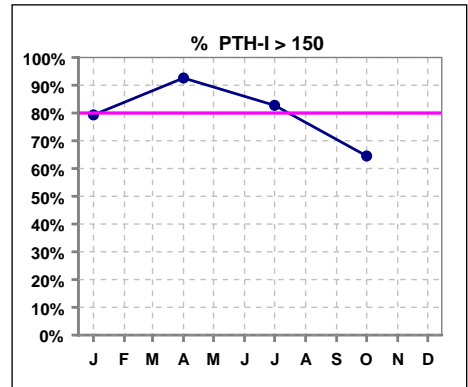
\*Methodology: a) Monthly values based on patient's monthly average of all values present for the month; b) Quarter values are average of all values for quarter; c) Values not averaged use last value present at months end.

**III. OSTEODYSTROPHY - CONT.**

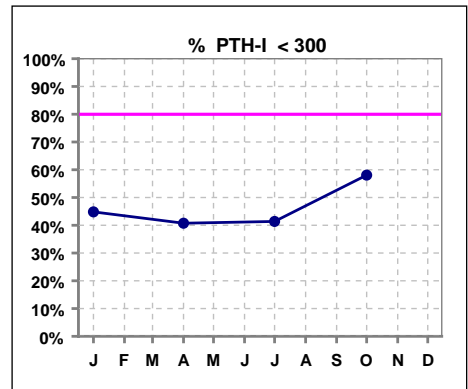
	Jan	Feb	Mar	Apr	May	Jun	Jul	Aug	Sep	Oct	Nov	Dec
# Calcium	43	48	51	50	51	48	45	50	48	45	48	42
# Calcium > 8.4				40	40	36	33	34	31	37	36	29
# Calcium > 8.5	32	34	33									
Pop. Mean	9.0	8.8	8.9	9.0	9.0	8.9	8.9	8.8	8.8	8.9	8.9	8.9
Std. Deviation	0.85	0.70	0.68	0.80	0.90	0.70	0.87	0.84	0.76	0.73	0.70	0.71
Network Mean												
Natl. Mean '06	9	9	9	9	9	9	9	9	9	9	9	9
<b>% Calcium &gt; 8.4</b>	<b>81%</b>	<b>73%</b>	<b>69%</b>	<b>80%</b>	<b>78%</b>	<b>75%</b>	<b>73%</b>	<b>68%</b>	<b>65%</b>	<b>82%</b>	<b>75%</b>	<b>69%</b>



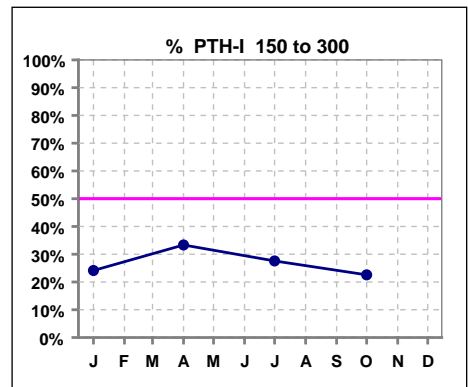
	Jan	Feb	Mar	Apr	May	Jun	Jul	Aug	Sep	Oct	Nov	Dec
# PTH-I	29			27			29			31		
# PTH-I > 150	23			25			24			20		
Pop. Mean	521			535			582			435		
Std. Deviation	501			692			556			588		
Network Mean												
Natl. Mean												
<b>% PTH-I &gt; 150</b>	<b>79%</b>			<b>93%</b>			<b>83%</b>			<b>65%</b>		



	Jan	Feb	Mar	Apr	May	Jun	Jul	Aug	Sep	Oct	Nov	Dec
# PTH-I	29			27			29			31		
# PTH-I < 300	13			11			12			18		
Pop. Mean	521			535			582			435		
Std. Deviation	501			692			556			588		
Network Mean												
Natl. Mean												
<b>% PTH-I &lt; 300</b>	<b>45%</b>			<b>41%</b>			<b>41%</b>			<b>58%</b>		



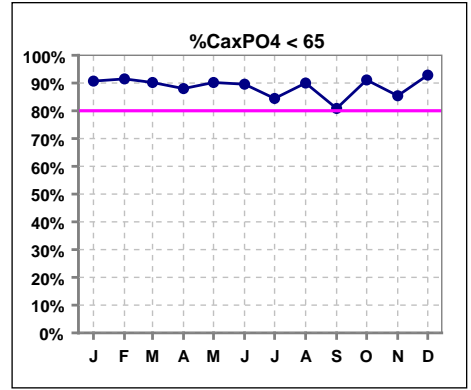
	Jan	Feb	Mar	Apr	May	Jun	Jul	Aug	Sep	Oct	Nov	Dec
# PTH-I	29			27			29			31		
# PTH-I 150 to 300	7			9			8			7		
Pop. Mean	521			535			582			435		
Std. Deviation	501			692			556			588		
Network Mean												
Natl. Mean												
<b>% PTH-I 150 to 300</b>	<b>24%</b>			<b>33%</b>			<b>28%</b>			<b>23%</b>		



\*Methodology: a) Monthly values based on patient's monthly average of all values present for the month; b) Quarter values are average of all values for quarter; c) Values not averaged use last value present at months end.

**III. OSTEODYSTROPHY - CONT.**

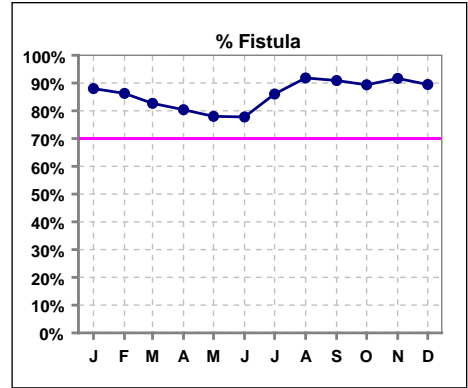
	Jan	Feb	Mar	Apr	May	Jun	Jul	Aug	Sep	Oct	Nov	Dec
# Ca x PO4	43	47	51	50	51	48	45	50	47	45	48	42
# Ca x PO4 < 65				44	46	43	38	45	38	41	41	39
# Ca x PO4 < 55	35	36	40									
Pop. Mean	44.5	45.0	45.4	47.0	46.3	47.1	47.9	45.7	47.1	43.0	44.2	47.8
Std. Deviation	13.4	15.0	14.0	15.3	14.8	13.9	16.8	15.6	16.9	13.4	15.6	13.4
Network Mean												
Natl. Mean												
<b>% Ca x PO4 &lt; 65</b>	<b>91%</b>	<b>91%</b>	<b>90%</b>	<b>88%</b>	<b>90%</b>	<b>90%</b>	<b>84%</b>	<b>90%</b>	<b>81%</b>	<b>91%</b>	<b>85%</b>	<b>93%</b>



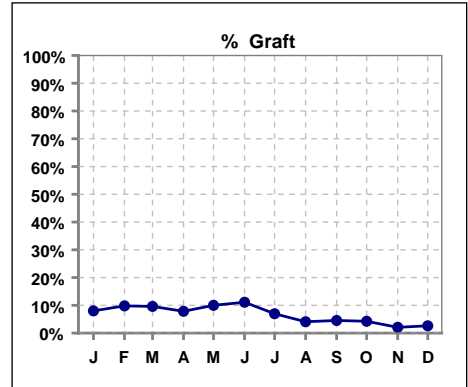
\*Methodology: a) Monthly values based on patient's monthly average of all values present for the month; b) Quarter values are average of all values for quarter; c) Values not averaged use last value present at months end.

**IV. ACCESS**

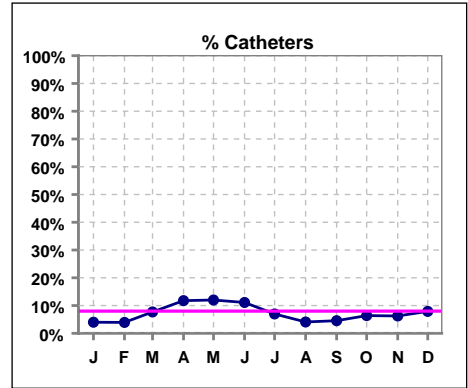
	Jan	Feb	Mar	Apr	May	Jun	Jul	Aug	Sep	Oct	Nov	Dec
# Access	50	51	52	51	50	45	43	49	44	47	48	38
# Fistula	44	44	43	41	39	35	37	45	40	42	44	34
Network % '06	61%	61%	61%	61%	61%	61%	61%	61%	61%	61%	61%	61%
Natl. % '06	45%	45%	45%	45%	45%	45%	45%	45%	45%	45%	45%	45%
% Fistula	88%	86%	83%	80%	78%	78%	86%	92%	91%	89%	92%	89%



	Jan	Feb	Mar	Apr	May	Jun	Jul	Aug	Sep	Oct	Nov	Dec
# Access	50	51	52	51	50	45	43	49	44	47	48	38
# Graft	4	5	5	4	5	5	3	2	2	2	1	1
Network %												
Natl. %												
% Graft	8%	10%	10%	8%	10%	11%	7%	4%	5%	4%	2%	3%

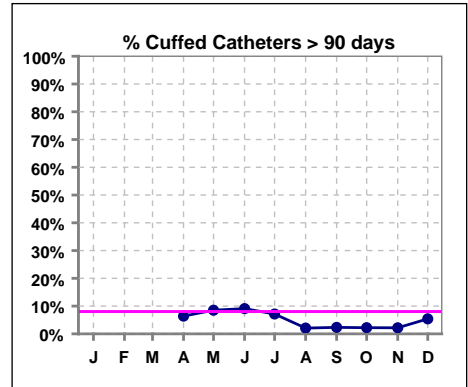


	Jan	Feb	Mar	Apr	May	Jun	Jul	Aug	Sep	Oct	Nov	Dec
# Access	50	51	52	51	50	45	43	49	44	47	48	38
# Catheters	2	2	4	6	6	5	3	2	2	3	3	3
Network % '06	22%	22%	22%	22%	22%	22%	22%	22%	22%	22%	22%	22%
Natl. % '06	29%	29%	29%	29%	29%	29%	29%	29%	29%	29%	29%	29%
% Catheters	4%	4%	8%	12%	12%	11%	7%	4%	5%	6%	6%	8%



**Cuffed Catheters > 90 days**

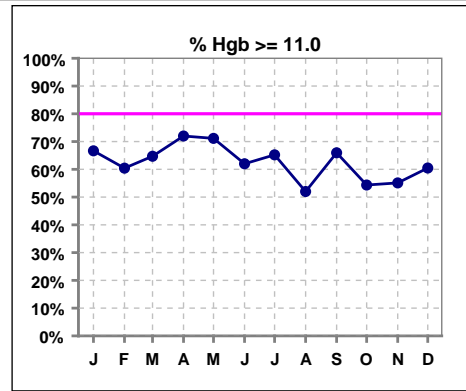
	Jan	Feb	Mar	Apr	May	Jun	Jul	Aug	Sep	Oct	Nov	Dec
# Access	50	51	52	51	50	45	43	49	44	47	48	38
# Cuffed Catheters				3	4	4	3	1	1	1	1	2
Network % '06	22%	22%	22%	22%	22%	22%	22%	22%	22%	22%	22%	22%
Natl. % '06	29%	29%	29%	29%	29%	29%	29%	29%	29%	29%	29%	29%
% Cuffed Catheters				6%	9%	9%	7%	2%	2%	2%	2%	5%



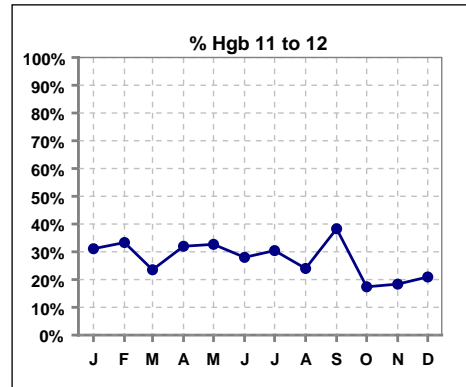
\*Methodology: a) Monthly values based on patient's monthly average of all values present for the month; b) Quarter values are average of all values for quarter; c) Values not averaged use last value present at months end.

**V. ANEMIA**

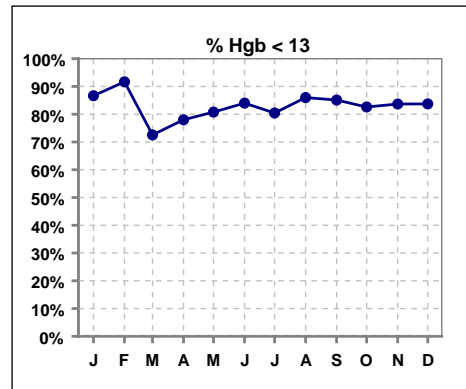
	Jan	Feb	Mar	Apr	May	Jun	Jul	Aug	Sep	Oct	Nov	Dec
# Hgb	45	48	51	50	52	50	46	50	47	46	49	43
# Hgb >= 11.0	30	29	33	36	37	31	30	26	31	25	27	26
Pop. Mean	11.3	11.3	11.8	11.9	11.6	11.4	11.4	11.2	11.3	11.2	11.2	11.4
Std. Deviation	1.6	1.4	1.9	1.6	1.6	1.5	1.5	1.4	1.6	1.8	1.9	1.9
Network Mean	11.8	11.8	11.8	11.8	11.8	11.8	11.8	11.8	11.8	11.8	11.8	11.8
Natl. Mean '06	12	12	12	12	12	12	12	12	12	12	12	12
<b>% Hgb &gt;= 11.0</b>	<b>67%</b>	<b>60%</b>	<b>65%</b>	<b>72%</b>	<b>71%</b>	<b>62%</b>	<b>65%</b>	<b>52%</b>	<b>66%</b>	<b>54%</b>	<b>55%</b>	<b>60%</b>
<b>% Hgb &lt;= 11.0</b>	<b>33%</b>	<b>40%</b>	<b>37%</b>	<b>28%</b>	<b>33%</b>	<b>42%</b>	<b>35%</b>	<b>48%</b>	<b>34%</b>	<b>46%</b>	<b>45%</b>	<b>42%</b>
<b>% Netwk &gt;= 11 '06</b>	<b>87%</b>	<b>87%</b>	<b>87%</b>	<b>87%</b>	<b>87%</b>	<b>87%</b>	<b>87%</b>	<b>87%</b>	<b>87%</b>	<b>87%</b>	<b>87%</b>	<b>87%</b>
<b>% Natl. &gt;= 11 '06</b>	<b>84%</b>	<b>84%</b>	<b>84%</b>	<b>84%</b>	<b>84%</b>	<b>84%</b>	<b>84%</b>	<b>84%</b>	<b>84%</b>	<b>84%</b>	<b>84%</b>	<b>84%</b>



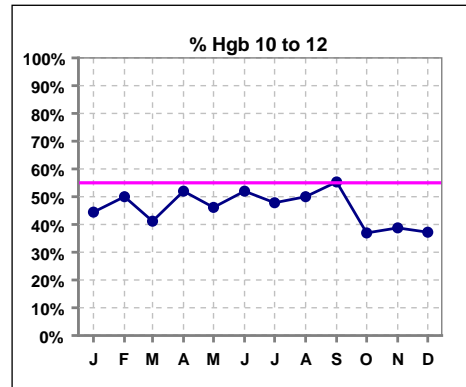
	Jan	Feb	Mar	Apr	May	Jun	Jul	Aug	Sep	Oct	Nov	Dec
# Hgb	45	48	51	50	52	50	46	50	47	46	49	43
# Hgb 11 to 12	14	16	12	16	17	14	14	12	18	8	9	9
Pop. Mean	11.3	11.3	11.8	11.9	11.6	11.4	11.4	11.2	11.3	11.2	11.2	11.4
Std. Deviation	1.6	1.4	1.9	1.6	1.6	1.5	1.5	1.4	1.6	1.8	1.9	1.9
Network Mean	11.8	11.8	11.8	11.8	11.8	11.8	11.8	11.8	11.8	11.8	11.8	11.8
Natl. Mean '06	12	12	12	12	12	12	12	12	12	12	12	12
<b>% Hgb 11 to 12</b>	<b>31%</b>	<b>33%</b>	<b>24%</b>	<b>32%</b>	<b>33%</b>	<b>28%</b>	<b>30%</b>	<b>24%</b>	<b>38%</b>	<b>17%</b>	<b>18%</b>	<b>21%</b>



	Jan	Feb	Mar	Apr	May	Jun	Jul	Aug	Sep	Oct	Nov	Dec
# Hgb	45	48	51	50	52	50	46	50	47	46	49	43
# Hgb < 13	39	44	37	39	42	42	37	43	40	38	41	36
Pop. Mean	11.3	11.3	11.8	11.9	11.6	11.4	11.4	11.2	11.3	11.2	11.2	11.4
Std. Deviation	1.6	1.4	1.9	1.6	1.6	1.5	1.5	1.4	1.6	1.8	1.9	1.9
Network Mean	11.8	11.8	11.8	11.8	11.8	11.8	11.8	11.8	11.8	11.8	11.8	11.8
<b>% Hgb &lt; 13</b>	<b>87%</b>	<b>92%</b>	<b>73%</b>	<b>78%</b>	<b>81%</b>	<b>84%</b>	<b>80%</b>	<b>86%</b>	<b>85%</b>	<b>83%</b>	<b>84%</b>	<b>84%</b>



	Jan	Feb	Mar	Apr	May	Jun	Jul	Aug	Sep	Oct	Nov	Dec
# Hgb	45	48	51	50	52	50	46	50	47	46	49	43
# Hgb 10 to 12	20	24	21	26	24	26	22	25	26	17	19	16
Pop. Mean	11.3	11.3	11.8	11.9	11.6	11.4	11.4	11.2	11.3	11.2	11.2	11.4
Std. Deviation	1.6	1.4	1.9	1.6	1.6	1.5	1.5	1.4	1.6	1.8	1.9	1.9
Network Mean	11.8	11.8	11.8	11.8	11.8	11.8	11.8	11.8	11.8	11.8	11.8	11.8
<b>% Hgb 10 to 12</b>	<b>44%</b>	<b>50%</b>	<b>41%</b>	<b>52%</b>	<b>46%</b>	<b>52%</b>	<b>48%</b>	<b>50%</b>	<b>55%</b>	<b>37%</b>	<b>39%</b>	<b>37%</b>

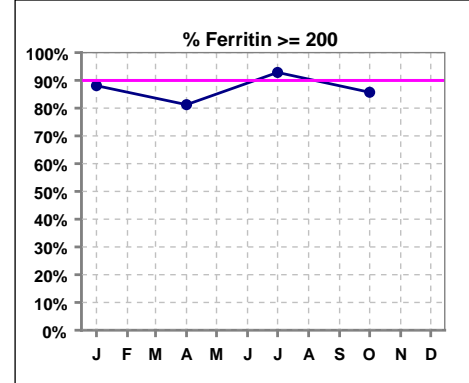


\*Methodology: a) Monthly values based on patient's monthly average of all values present for the month; b) Quarter values are average of all values for quarter; c) Values not averaged use last value present at months end.

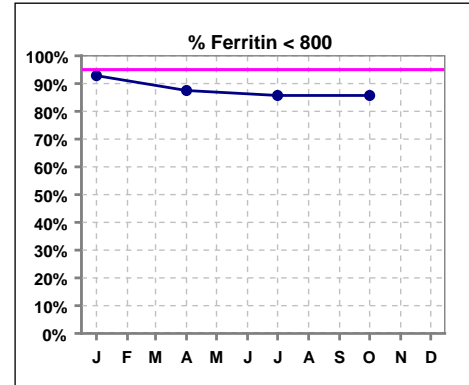
**V. ANEMIA - CONT.**

**Iron Profile**

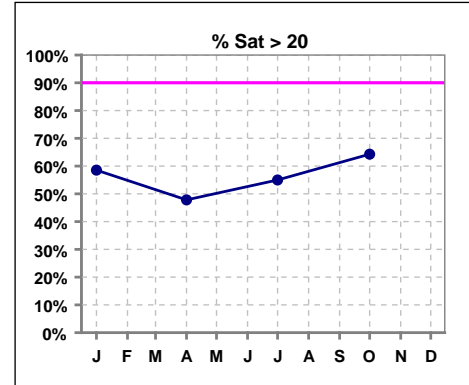
	Jan	Feb	Mar	Apr	May	Jun	Jul	Aug	Sep	Oct	Nov	Dec
# Ferritin	42			48			42			42		
# Ferritin >= 200	37			39			39			36		
Pop. Mean	437			502			531			535		
Std. Deviation	195			505			352			264		
Network Mean												
Natl. Mean '06	583			583			583			583		
<b>% Ferritin &gt;= 200</b>	<b>88%</b>			<b>81%</b>			<b>93%</b>			<b>86%</b>		



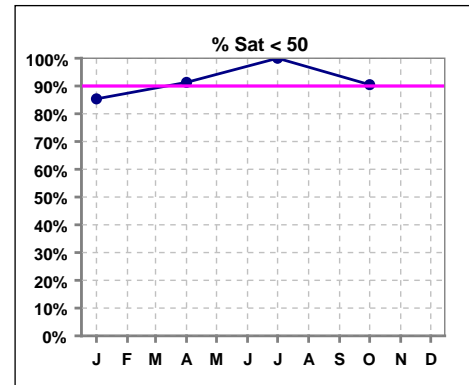
	Jan	Feb	Mar	Apr	May	Jun	Jul	Aug	Sep	Oct	Nov	Dec
# Ferritin	42			48			42			42		
# Ferritin < 800	39			42			36			36		
Pop. Mean	437			502			531			535		
Std. Deviation	195			505			352			264		
Network Mean												
Natl. Mean '06	583			583			583			583		
<b>% Ferritin &lt; 800</b>	<b>93%</b>			<b>88%</b>			<b>86%</b>			<b>86%</b>		



	Jan	Feb	Mar	Apr	May	Jun	Jul	Aug	Sep	Oct	Nov	Dec
# % Sat	41			46			40			42		
# % Sat > 20	24			22			22			27		
Pop. Mean	29			25			25			29		
Std. Deviation	17			16			10			16		
Network Mean												
Natl. Mean '06	28			28			28			28		
<b>% Sat% &gt; 20</b>	<b>59%</b>			<b>48%</b>			<b>55%</b>			<b>64%</b>		
<b>% Netwk &gt;= 20 '06</b>	<b>74%</b>			<b>74%</b>			<b>74%</b>			<b>74%</b>		
<b>% Natl. &gt;=20 '06</b>	<b>79%</b>			<b>79%</b>			<b>79%</b>			<b>79%</b>		



	Jan	Feb	Mar	Apr	May	Jun	Jul	Aug	Sep	Oct	Nov	Dec
# % Sat	41			46			40			42		
# % Sat < 50	35			42			40			38		
Pop. Mean	29			25			25			29		
Std. Deviation	17			16			10			16		
Network Mean												
Natl. Mean '06	28			28			28			28		
<b>% Sat% &lt; 50</b>	<b>85%</b>			<b>91%</b>			<b>100%</b>			<b>90%</b>		

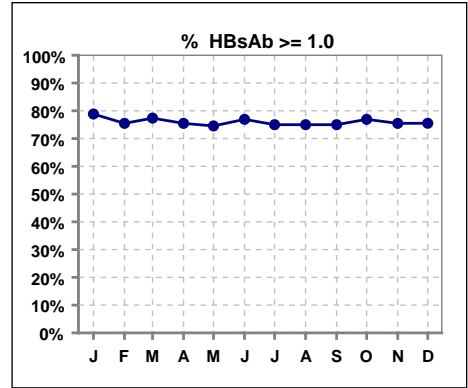


\*Methodology: a) Monthly values based on patient's monthly average of all values present for the month; b) Quarter values are average of all values for quarter; c) Values not averaged use last value present at months end.



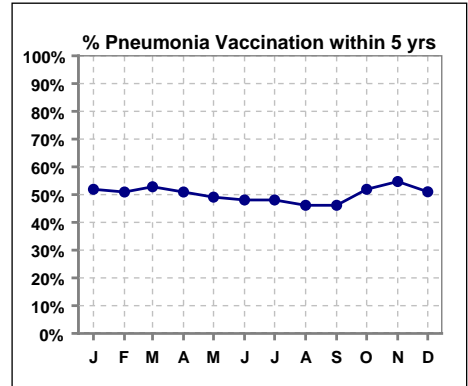
**VI. Infection Control**

	Jan	Feb	Mar	Apr	May	Jun	Jul	Aug	Sep	Oct	Nov	Dec
# Patient	52	53	53	53	55	52	52	52	52	52	53	49
# HBsAb >= 1.0	41	40	41	40	41	40	39	39	39	40	40	37
% HBsAb >= 1.0	79%	75%	77%	75%	75%	77%	75%	75%	75%	77%	75%	76%



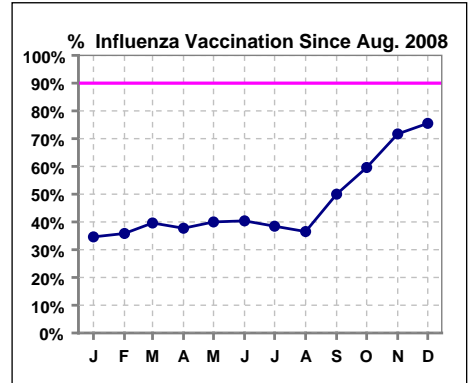
**Pneumonia vaccination within the past five years at NKC**

	Jan	Feb	Mar	Apr	May	Jun	Jul	Aug	Sep	Oct	Nov	Dec
# Patient	52	53	53	53	55	52	52	52	52	52	53	49
# Pneumonia	27	27	28	27	27	25	25	24	24	27	29	25
% Pneumonia	52%	51%	53%	51%	49%	48%	48%	46%	46%	52%	55%	51%



**Influenza vaccination since August at NKC**

	Jan	Feb	Mar	Apr	May	Jun	Jul	Aug	Sep	Oct	Nov	Dec
# Patient	52	53	53	53	55	52	52	52	52	52	53	49
# Influenza since 08/08	18	19	21	20	22	21	20	19	26	31	38	37
% Influenza	35%	36%	40%	38%	40%	40%	38%	37%	50%	60%	72%	76%



\*Methodology: a) Monthly values based on patient's monthly average of all values present for the month; b) Quarter values are average of all values for quarter; c) Values not averaged use last value present at months end.