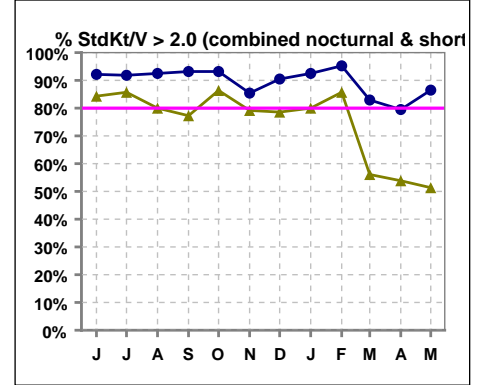


I. ADEQUACY OF DIALYSIS

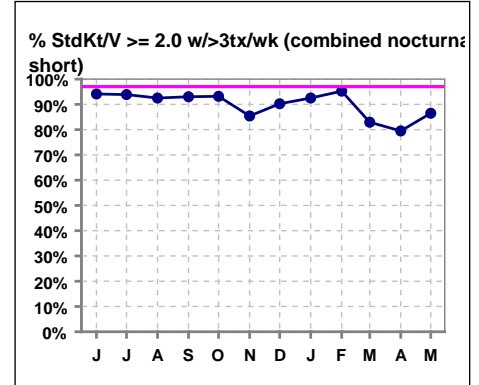
Combined standard nocturnal/short daily

	Jun	Jul	Aug	Sep	Oct	Nov	Dec	Jan	Feb	Mar	Apr	May
# StdKt/V	51	49	40	44	44	48	42	40	42	41	39	37
# StdKt/V > 2.0	47	45	37	41	41	41	38	37	40	34	31	32
Pop. Mean	3.12	3.12	3.13	3.23	3.24	3.01	2.99	3.01	3.14	2.62	2.53	2.47
Std. Deviation	0.77	0.77	0.82	0.82	0.82	0.81	0.74	0.68	0.72	0.72	0.62	0.61
% StdKt/V > 2.0	92%	92%	93%	93%	93%	85%	90%	93%	95%	83%	79%	86%
% StdKt/V >= 2.4	84%	86%	80%	77%	86%	79%	79%	80%	86%	56%	54%	51%



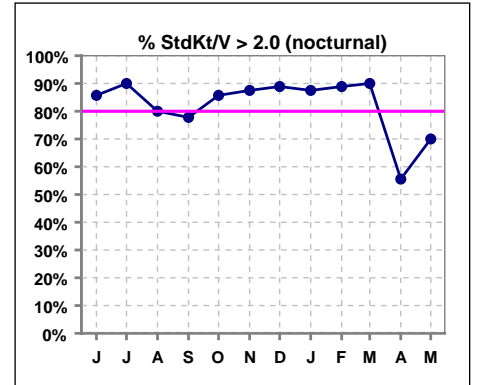
Combined standard nocturnal/short daily

	Jun	Jul	Aug	Sep	Oct	Nov	Dec	Jan	Feb	Mar	Apr	May
# StdKt/V w/ >3tx/wk	51	49	40	43	44	48	41	40	42	41	39	37
# >= 2.0 w/ >3tx/wk	48	46	37	40	41	41	37	37	40	34	31	32
Pop. Mean	3.14	3.15	3.15	3.25	3.24	3.04	3.01	3.06	3.14	2.62	2.53	2.47
Std. Deviation	0.74	0.73	0.81	0.81	0.82	0.80	0.75	0.69	0.72	0.72	0.62	0.61
% >= 2.0 w/ >3tx/wk	94%	94%	93%	93%	93%	85%	90%	93%	95%	83%	79%	86%



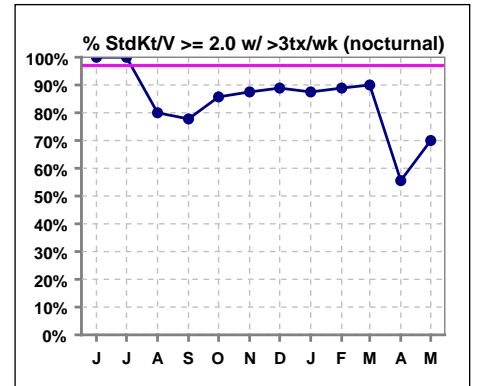
Standard nocturnal

	Jun	Jul	Aug	Sep	Oct	Nov	Dec	Jan	Feb	Mar	Apr	May
# StdKt/V	7	10	10	9	7	8	9	8	9	10	9	10
# StdKt/V > 2.0	6	9	8	7	6	7	8	7	8	9	5	7
Pop. Mean	2.87	3.06	2.79	2.87	3.14	3.10	2.82	2.77	2.83	2.94	2.73	2.69
Std. Deviation	0.87	0.75	0.81	0.74	1.12	1.03	0.76	0.75	0.68	1.02	1.13	0.99
% StdKt/V > 2.0	86%	90%	80%	78%	86%	88%	89%	88%	89%	90%	56%	70%



Standard nocturnal

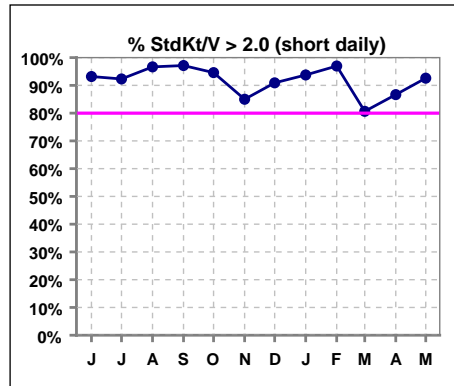
	Jun	Jul	Aug	Sep	Oct	Nov	Dec	Jan	Feb	Mar	Apr	May
# StdKt/V w/ >3tx/wk	7	10	10	9	7	8	9	8	9	10	9	10
# >= 2.0 w/ >3tx/wk	7	10	8	7	6	7	8	7	8	9	5	7
Pop. Mean	3.00	3.16	2.79	2.87	3.14	3.10	2.82	2.77	2.83	2.94	2.73	2.69
Std. Deviation	0.66	0.57	0.81	0.74	1.12	1.03	0.76	0.75	0.68	1.02	1.13	0.99
% >= 2.0 w/ >3tx/wk	100%	100%	80%	78%	86%	88%	89%	88%	89%	90%	56%	70%



I. ADEQUACY OF DIALYSIS - CONT.

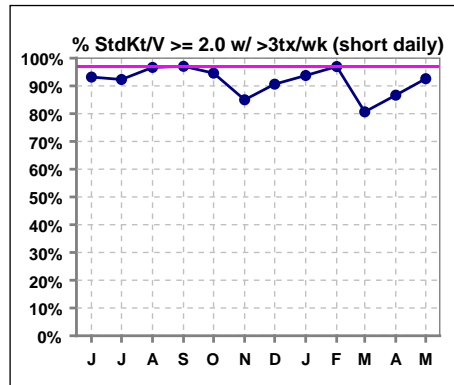
Standard short daily

	Jun	Jul	Aug	Sep	Oct	Nov	Dec	Jan	Feb	Mar	Apr	May
# StdKt/V	44	39	30	35	37	40	33	32	33	31	30	27
# StdKt/V > 2.0	41	36	29	34	35	34	30	30	32	25	26	25
Pop. Mean	3.16	3.13	3.25	3.32	3.26	3.00	3.04	3.07	3.22	2.51	2.47	2.39
Std. Deviation	0.76	0.78	0.80	0.83	0.78	0.77	0.74	0.67	0.72	0.58	0.38	0.38
% StdKt/V > 2.0	93%	92%	97%	97%	95%	85%	91%	94%	97%	81%	87%	93%



Standard short daily

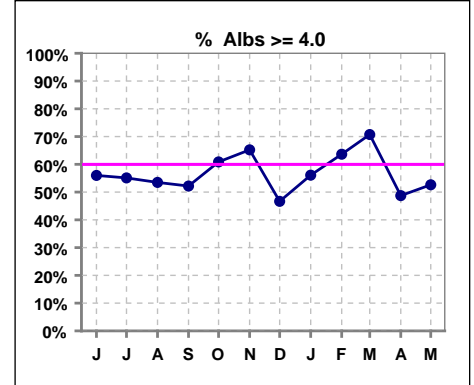
	Jun	Jul	Aug	Sep	Oct	Nov	Dec	Jan	Feb	Mar	Apr	May
# StdKt/V w/ >3tx/wk	44	39	30	34	37	40	32	32	33	31	30	27
# >= 2.0 w/ >3tx/wk	41	36	29	33	35	34	29	30	32	25	26	25
Pop. Mean	3.16	3.15	3.28	3.36	3.26	3.02	3.06	3.13	3.22	2.51	2.47	2.39
Std. Deviation	0.76	0.77	0.78	0.81	0.78	0.77	0.75	0.67	0.72	0.58	0.38	0.38
% >= 2.0 w/ >3tx/wk	93%	92%	97%	97%	95%	85%	91%	94%	97%	81%	87%	93%



*Albumin values use BCG method - as of July 2001

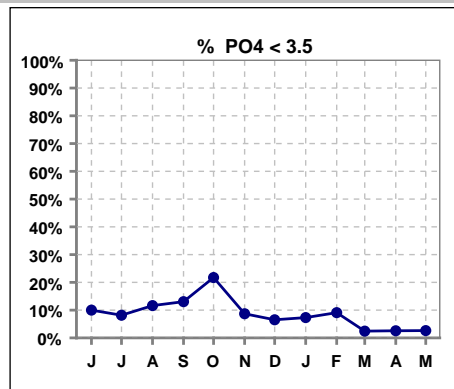
II. NUTRITION

	Jun	Jul	Aug	Sep	Oct	Nov	Dec	Jan	Feb	Mar	Apr	May
# Albumin	50	49	43	46	46	46	45	41	44	41	39	38
# Albumin >= 4.0	28	27	23	24	28	30	21	23	28	29	19	20
Pop. Mean	4.0	4.0	3.9	4.0	4.0	4.1	4.0	4.0	4.0	4.0	4.0	3.9
Std. Deviation	0.46	0.51	0.45	0.45	0.46	0.44	0.41	0.42	0.33	0.36	0.38	0.41
% Alb >= 3.5	86%	90%	81%	87%	83%	91%	89%	90%	93%	98%	87%	87%
% Alb >= 3.0	98%	94%	98%	100%	100%	98%	98%	100%	100%	98%	100%	100%
% Alb >= 4.0	56%	55%	53%	52%	61%	65%	47%	56%	64%	71%	49%	53%

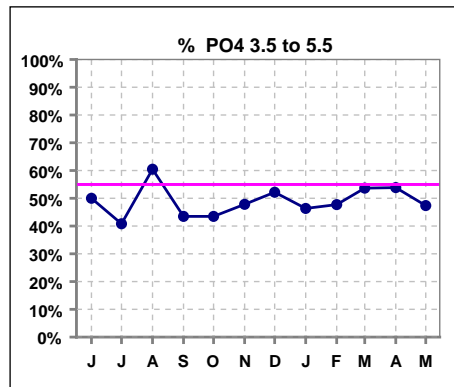


III. OSTEODYSTROPHY

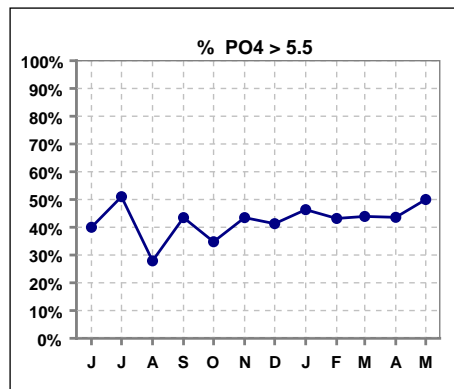
	Jun	Jul	Aug	Sep	Oct	Nov	Dec	Jan	Feb	Mar	Apr	May
# PO4	50	49	43	46	46	46	46	41	44	41	39	38
# PO4 < 3.5	5	4	5	6	10	4	3	3	4	1	1	1
Pop. Mean	5.2	5.5	4.9	5.4	4.9	5.5	5.3	5.5	5.7	5.6	5.6	5.6
Std. Deviation	1.49	1.57	1.41	1.77	1.74	1.77	1.73	1.59	1.79	1.42	1.50	1.47
% PO4 < 3.5	10%	8%	12%	13%	22%	9%	7%	7%	9%	2%	3%	3%



	Jun	Jul	Aug	Sep	Oct	Nov	Dec	Jan	Feb	Mar	Apr	May
# PO4	50	49	43	46	46	46	46	41	44	41	39	38
# PO4 3.5 to 5.5	25	20	26	20	20	22	24	19	21	22	21	18
Pop. Mean	5.2	5.5	4.9	5.4	4.9	5.5	5.3	5.5	5.7	5.6	5.6	5.6
Std. Deviation	1.49	1.57	1.41	1.77	1.74	1.77	1.73	1.59	1.79	1.42	1.50	1.47
% PO4 3.5 to 5.5	50%	41%	60%	43%	43%	48%	52%	46%	48%	54%	54%	47%

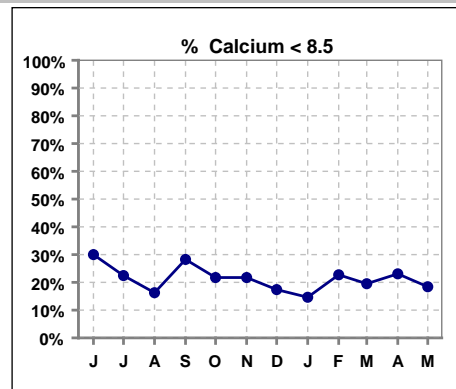


	Jun	Jul	Aug	Sep	Oct	Nov	Dec	Jan	Feb	Mar	Apr	May
# PO4	50	49	43	46	46	46	46	41	44	41	39	38
# PO4 > 5.5	20	25	12	20	16	20	19	19	19	18	17	19
Pop. Mean	5.2	5.5	4.9	5.4	4.9	5.5	5.3	5.5	5.7	5.6	5.6	5.6
Std. Deviation	1.49	1.57	1.41	1.77	1.74	1.77	1.73	1.59	1.79	1.42	1.50	1.47
% PO4 > 5.5	40%	51%	28%	43%	35%	43%	41%	46%	43%	44%	44%	50%

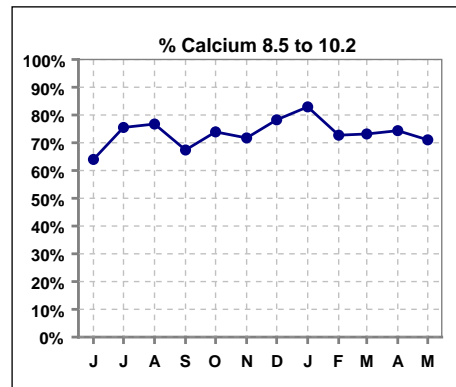


III. OSTEODYSTROPHY - CONT.

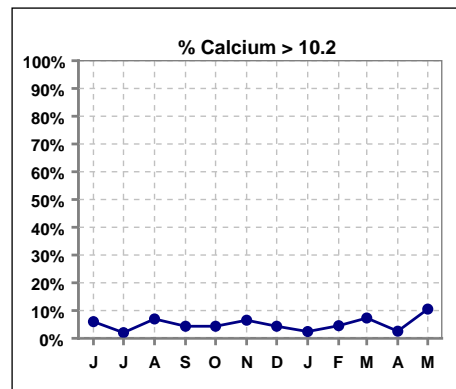
	Jun	Jul	Aug	Sep	Oct	Nov	Dec	Jan	Feb	Mar	Apr	May
# Calcium	50	49	43	46	46	46	46	41	44	41	39	38
# Calcium < 8.5	15	11	7	13	10	10	8	6	10	8	9	7
Pop. Mean	8.9	8.9	9.0	9.0	9.0	9.0	9.1	9.2	9.0	9.1	9.0	9.2
Std. Deviation	0.83	0.73	0.80	0.76	0.64	0.82	0.64	0.65	0.70	0.68	0.61	0.77
% Calcium < 8.5	30%	22%	16%	28%	22%	22%	17%	15%	23%	20%	23%	18%



	Jun	Jul	Aug	Sep	Oct	Nov	Dec	Jan	Feb	Mar	Apr	May
# Calcium	50	49	43	46	46	46	46	41	44	41	39	38
# Calcium 8.5 to 10.2	32	37	33	31	34	33	36	34	32	30	29	27
Pop. Mean	8.9	8.9	9.0	9.0	9.0	9.0	9.1	9.2	9.0	9.1	9.0	9.2
Std. Deviation	0.83	0.73	0.80	0.76	0.64	0.82	0.64	0.65	0.70	0.68	0.61	0.77
% Calcium 8.5 to 10.2	64%	76%	77%	67%	74%	72%	78%	83%	73%	73%	74%	71%

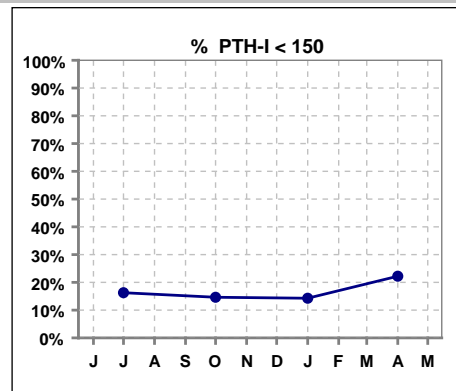


	Jun	Jul	Aug	Sep	Oct	Nov	Dec	Jan	Feb	Mar	Apr	May
# Calcium	50	49	43	46	46	46	46	41	44	41	39	38
# Calcium > 10.2	3	1	3	2	2	3	2	1	2	3	1	4
Pop. Mean	8.9	8.9	9.0	9.0	9.0	9.0	9.1	9.2	9.0	9.1	9.0	9.2
Std. Deviation	0.83	0.73	0.80	0.76	0.64	0.82	0.64	0.65	0.70	0.68	0.61	0.77
% Calcium > 10.2	6%	2%	7%	4%	4%	7%	4%	2%	5%	7%	3%	11%

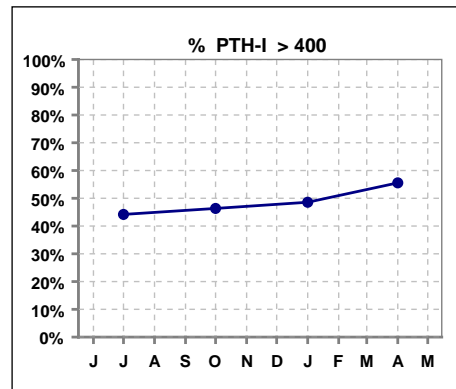


III. OSTEODYSTROPHY - CONT.

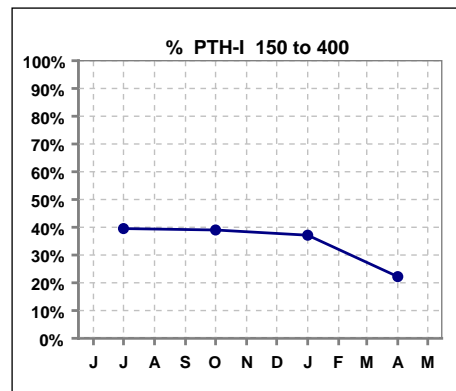
	Jun	Jul	Aug	Sep	Oct	Nov	Dec	Jan	Feb	Mar	Apr	May
# PTH-I		43			41			35			36	
# PTH-I < 150		7			6			5			8	
Pop. Mean		450			535			515			523	
Std. Deviation		359			529			425			465	
% PTH-I < 150		16%			15%			14%			22%	



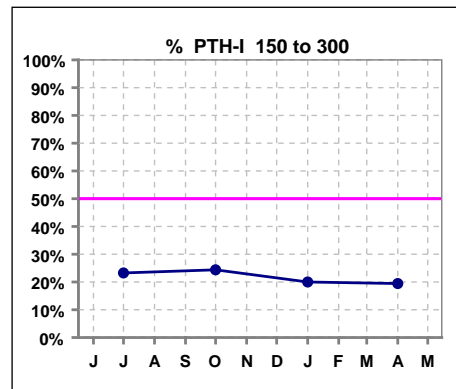
	Jun	Jul	Aug	Sep	Oct	Nov	Dec	Jan	Feb	Mar	Apr	May
# PTH-I		43			41			35			36	
# PTH-I > 400		19			19			17			20	
Pop. Mean		450			535			515			523	
Std. Deviation		359			529			425			465	
% PTH-I > 400		44%			46%			49%			56%	



	Jun	Jul	Aug	Sep	Oct	Nov	Dec	Jan	Feb	Mar	Apr	May
# PTH-I		43			41			35			36	
# PTH-I 150 to 400		17			16			13			8	
Pop. Mean		450			535			515			523	
Std. Deviation		359			529			425			465	
% PTH-I 150 to 400		40%			39%			37%			22%	



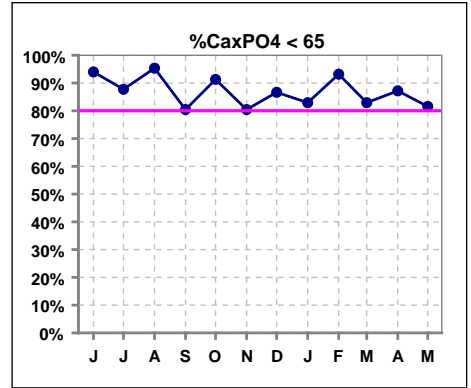
	Jun	Jul	Aug	Sep	Oct	Nov	Dec	Jan	Feb	Mar	Apr	May
# PTH-I		43			41			35			36	
# PTH-I 150 to 300		10			10			7			7	
Pop. Mean		450			535			515			523	
Std. Deviation		359			529			425			465	
% PTH-I 150 to 300		23%			24%			20%			19%	



Methodology: a) All labs for 'Adequacy of Dialysis', 'Nutrition', 'Osteodystrophy' and 'Anemia' based on last value of month; b) Access data takes last access of month; c) Values for 'Infection Control' uses most recent result.

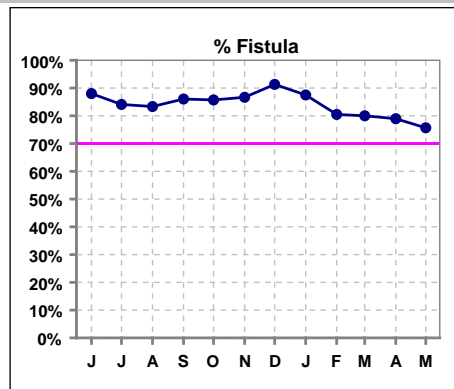
III. OSTEODYSTROPHY - CONT.

	Jun	Jul	Aug	Sep	Oct	Nov	Dec	Jan	Feb	Mar	Apr	May
# Ca x PO4	50	49	43	46	46	46	45	41	44	41	39	38
# Ca x PO4 < 65	47	43	41	37	42	37	39	34	41	34	34	31
Pop. Mean	47.0	49.3	44.6	49.9	44.3	50.7	48.3	50.3	50.7	50.9	50.3	51.5
Std. Deviation	13.1	14.8	13.4	17.1	16.5	17.3	16.2	14.8	15.1	13.1	14.1	14.0
% CaxPO4 < 65	94%	88%	95%	80%	91%	80%	87%	83%	93%	83%	87%	82%
% CaxPO4 < 55	68%	71%	79%	65%	78%	63%	73%	68%	57%	73%	74%	63%

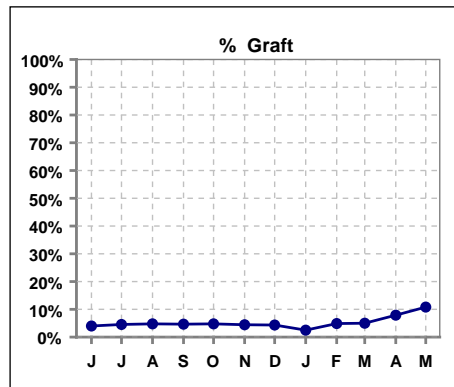


IV. ACCESS

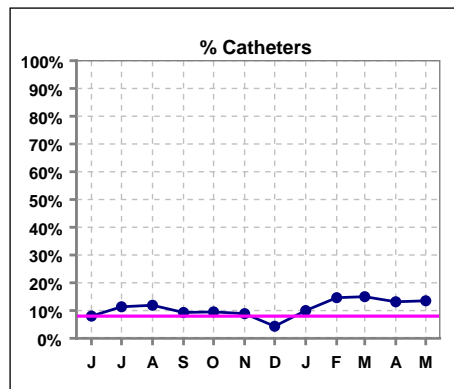
	Jun	Jul	Aug	Sep	Oct	Nov	Dec	Jan	Feb	Mar	Apr	May
# Access	50	44	42	43	42	45	46	40	41	40	38	37
# Fistula	44	37	35	37	36	39	42	35	33	32	30	28
% Fistula	88%	84%	83%	86%	86%	87%	91%	88%	80%	80%	79%	76%



	Jun	Jul	Aug	Sep	Oct	Nov	Dec	Jan	Feb	Mar	Apr	May
# Access	50	44	42	43	42	45	46	40	41	40	38	37
# Graft	2	2	2	2	2	2	2	1	2	2	3	4
% Graft	4%	5%	5%	5%	5%	4%	4%	3%	5%	5%	8%	11%



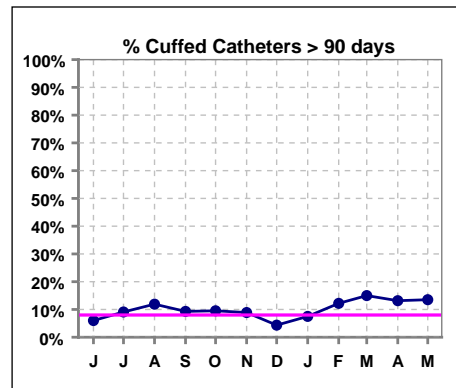
	Jun	Jul	Aug	Sep	Oct	Nov	Dec	Jan	Feb	Mar	Apr	May
# Access	50	44	42	43	42	45	46	40	41	40	38	37
# Catheters	4	5	5	4	4	4	2	4	6	6	5	5
% Catheters	8%	11%	12%	9%	10%	9%	4%	10%	15%	15%	13%	14%



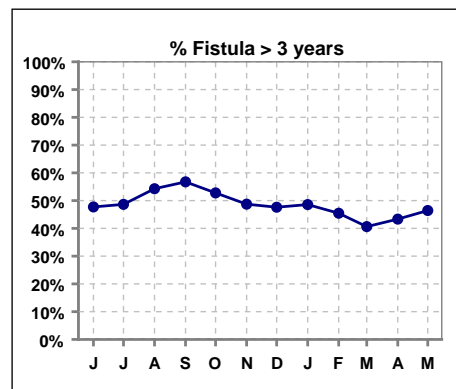
IV. ACCESS - CONT.

Cuffed Catheters > 90 days

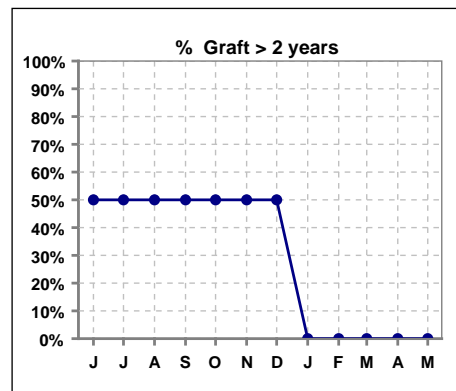
	Jun	Jul	Aug	Sep	Oct	Nov	Dec	Jan	Feb	Mar	Apr	May
# Access	50	44	42	43	42	45	46	40	41	40	38	37
# Cuffed Catheters	3	4	5	4	4	4	2	3	5	6	5	5
% Cuffed Catheters	6%	9%	12%	9%	10%	9%	4%	8%	12%	15%	13%	14%



	Jun	Jul	Aug	Sep	Oct	Nov	Dec	Jan	Feb	Mar	Apr	May
# Fistula	44	37	35	37	36	39	42	35	33	32	30	28
# Fistula > 3 yrs	21	18	19	21	19	19	20	17	15	13	13	13
% Fistula > 3 yrs	48%	49%	54%	57%	53%	49%	48%	49%	45%	41%	43%	46%



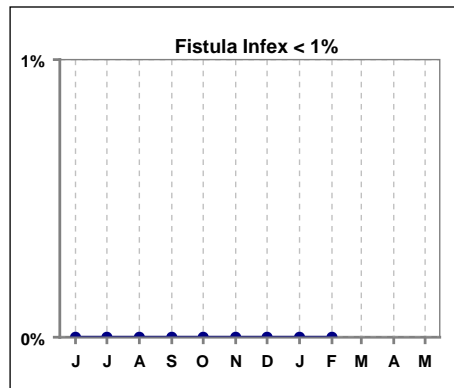
	Jun	Jul	Aug	Sep	Oct	Nov	Dec	Jan	Feb	Mar	Apr	May
# Graft	2	2	2	2	2	2	2	1	2	2	3	4
# Graft > 2 yrs	1	1	1	1	1	1	1	0	0	0	0	0
% Graft > 2 yrs	50%	50%	50%	50%	50%	50%	50%	0%	0%	0%	0%	0%



IV. ACCESS - CONT.

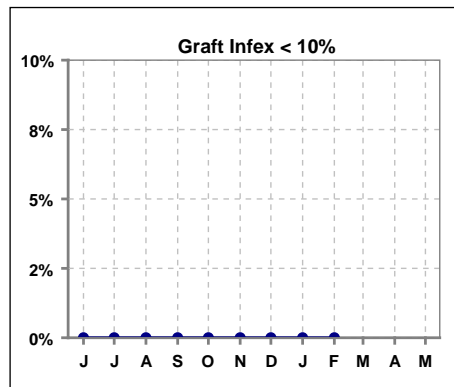
Infection per use-life of access fistula

	Jun	Jul	Aug	Sep	Oct	Nov	Dec	Jan	Feb	Mar	Apr	May
Infex per use-life	0	0	0	0	0	0	0	0	0	0	0	0



Infection per use-life of access graft

	Jun	Jul	Aug	Sep	Oct	Nov	Dec	Jan	Feb	Mar	Apr	May
Infex per use-life	0	0	0	0	0	0	0	0	0	0	0	0



Thrombosis Episode - access fistula

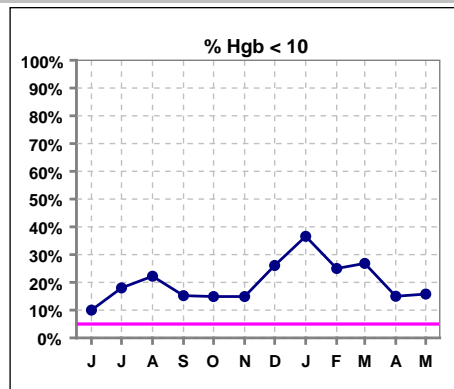
	Jun	Jul	Aug	Sep	Oct	Nov	Dec	Jan	Feb	Mar	Apr	May
Current Month	0	0	0	0	0	0	0	0	0.04			
Rolling Year-to-date	0	0.02	0	0	0	0	0	0	0.01	0.01	0.01	0.01

Thrombosis Episode - access graft

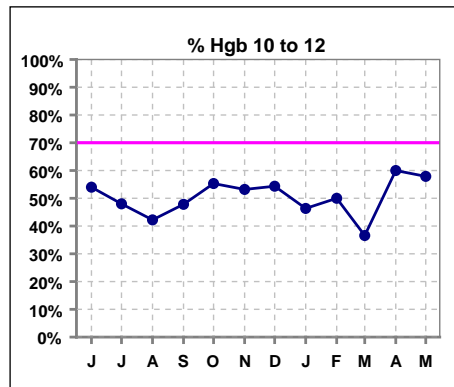
	Jun	Jul	Aug	Sep	Oct	Nov	Dec	Jan	Feb	Mar	Apr	May
Current Month	0	0	0	0	0	0	0	0	0			
Rolling Year-to-date	0	0	0	0	0	0	0	0	0			

V. ANEMIA

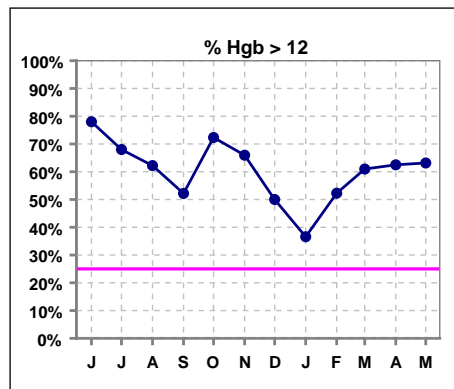
	Jun	Jul	Aug	Sep	Oct	Nov	Dec	Jan	Feb	Mar	Apr	May
# Hgb	50	50	45	46	47	47	46	41	44	41	40	38
# Hgb < 10	5	9	10	7	7	7	12	15	11	11	6	6
Pop. Mean	11.5	11.6	11.4	11.3	11.4	11.4	11.0	10.5	10.9	11.3	11.3	11.4
Std. Deviation	1.6	1.7	1.5	1.5	1.4	1.2	1.3	1.3	1.4	1.6	1.3	1.4
% Hgb < 10	10%	18%	22%	15%	15%	15%	26%	37%	25%	27%	15%	16%



	Jun	Jul	Aug	Sep	Oct	Nov	Dec	Jan	Feb	Mar	Apr	May
# Hgb	50	50	45	46	47	47	46	41	44	41	40	38
# Hgb 10 to 12	27	24	19	22	26	25	25	19	22	15	24	22
Pop. Mean	11.5	11.6	11.4	11.3	11.4	11.4	11.0	10.5	10.9	11.3	11.3	11.4
Std. Deviation	1.6	1.7	1.5	1.5	1.4	1.2	1.3	1.3	1.4	1.6	1.3	1.4
% Hgb 10 to 12	54%	48%	42%	48%	55%	53%	54%	46%	50%	37%	60%	58%



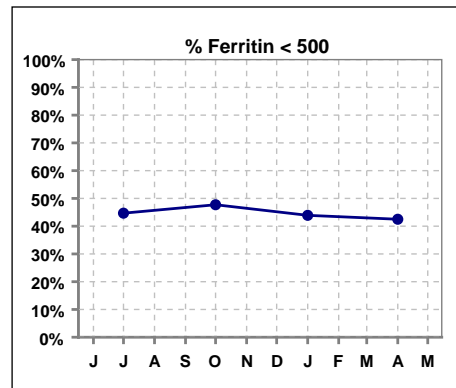
	Jun	Jul	Aug	Sep	Oct	Nov	Dec	Jan	Feb	Mar	Apr	May
# Hgb	50	50	45	46	47	47	46	41	44	41	40	38
# Hgb > 12	18	17	16	17	14	15	9	7	11	15	10	10
Pop. Mean	11.5	11.6	11.4	11.3	11.4	11.4	11.0	10.5	10.9	11.3	11.3	11.4
Std. Deviation	1.6	1.7	1.5	1.5	1.4	1.2	1.3	1.3	1.4	1.6	1.3	1.4
% Hgb > 12	78%	68%	62%	52%	72%	66%	50%	37%	52%	61%	63%	63%



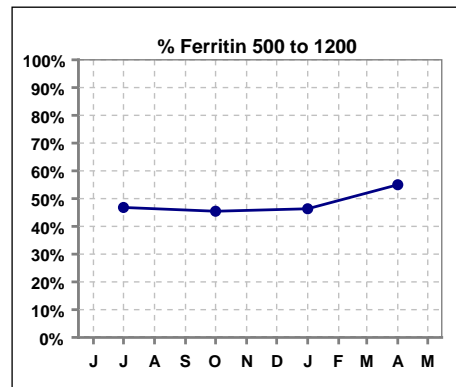
V. ANEMIA - CONT.

Iron Profile

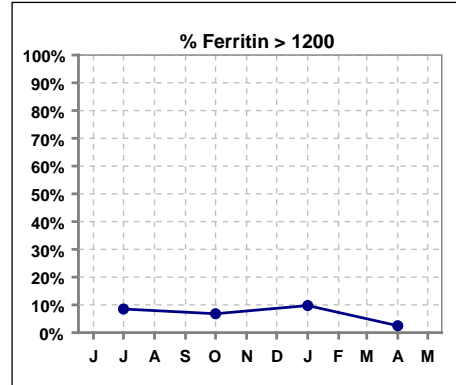
	Jun	Jul	Aug	Sep	Oct	Nov	Dec	Jan	Feb	Mar	Apr	May
# Ferritin		47			44			41			40	
# Ferritin < 500		21			21			18			17	
Pop. Mean		650			660			618			512	
Std. Deviation		377			465			397			297	
% Ferritin < 500		45%			48%			44%			43%	



	Jun	Jul	Aug	Sep	Oct	Nov	Dec	Jan	Feb	Mar	Apr	May
# Ferritin		47			44			41			40	
# Ferritin 500 to 1200		22			20			19			22	
Pop. Mean		650			660			618			512	
Std. Deviation		377			465			397			297	
% Ferritin 500 to 1200		47%			45%			46%			55%	

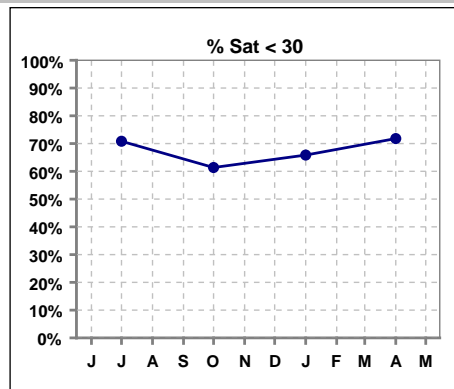


	Jun	Jul	Aug	Sep	Oct	Nov	Dec	Jan	Feb	Mar	Apr	May
# Ferritin		47			44			41			40	
# Ferritin > 1200		4			3			4			1	
Pop. Mean		650			660			618			512	
Std. Deviation		377			465			397			297	
% Ferritin > 1200		9%			7%			10%			3%	

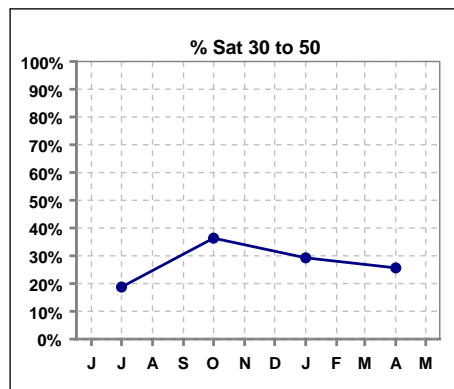


V. ANEMIA - CONT.

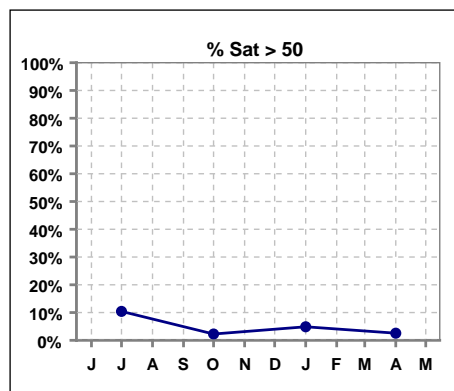
	Jun	Jul	Aug	Sep	Oct	Nov	Dec	Jan	Feb	Mar	Apr	May
# % Sat		48			44			41			39	
# % Sat < 30		34			27			27			28	
Pop. Mean		28			28			29			26	
Std. Deviation		15			13			15			10	
% % Sat < 30		71%			61%			66%			72%	



	Jun	Jul	Aug	Sep	Oct	Nov	Dec	Jan	Feb	Mar	Apr	May
# % Sat		48			44			41			39	
# % Sat 30 to 50		9			16			12			10	
Pop. Mean		28			28			29			26	
Std. Deviation		15			13			15			10	
% Sat% 30 to 50		19%			36%			29%			26%	

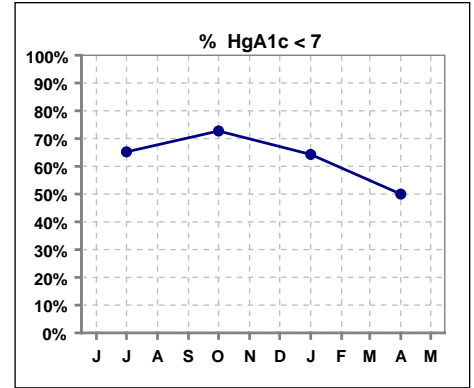


	Jun	Jul	Aug	Sep	Oct	Nov	Dec	Jan	Feb	Mar	Apr	May
# % Sat		48			44			41			39	
# % Sat > 50		5			1			2			1	
Pop. Mean		28			28			29			26	
Std. Deviation		15			13			15			10	
% % Sat > 50		10%			2%			5%			3%	



VI. Diabetes

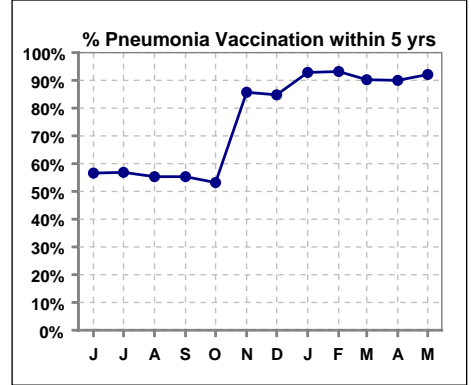
	Jun	Jul	Aug	Sep	Oct	Nov	Dec	Jan	Feb	Mar	Apr	May
# HgA1c		23			22			14			18	
# HgA1c < 7		15			16			9			9	
Pop. Mean		6.6			6.6			6.7			7.0	
Std. Deviation		1.02			1.16			1.35			1.24	
% HgA1c < 7		65%			73%			64%			50%	



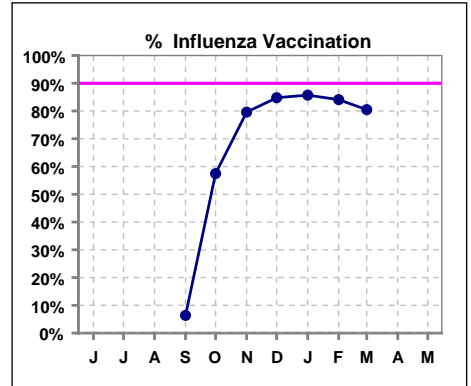
VII. Infection Control

Pneumonia vaccination within the past five years

	Jun	Jul	Aug	Sep	Oct	Nov	Dec	Jan	Feb	Mar	Apr	May
# Patient	53	51	47	47	47	49	46	42	44	41	40	38
# Pneumonia	30	29	26	26	25	42	39	39	41	37	36	35
% Pneumonia	57%	57%	55%	55%	53%	86%	85%	93%	93%	90%	90%	92%



	Jun	Jul	Aug	Sep	Oct	Nov	Dec	Jan	Feb	Mar	Apr	May
# Patient				47	47	49	46	42	44	41		
# Influenza				3	27	39	39	36	37	33		
% Influenza				6%	57%	80%	85%	86%	84%	80%		



Methodology: a) All labs for 'Adequacy of Dialysis', 'Nutrition', 'Osteodystrophy' and 'Anemia' based on last value of month; b) Access data takes last access of month; c) Values for 'Infection Control' uses most recent result.