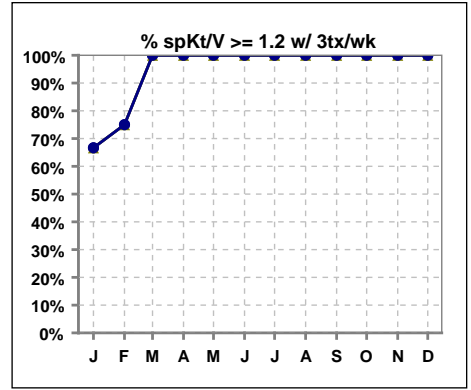
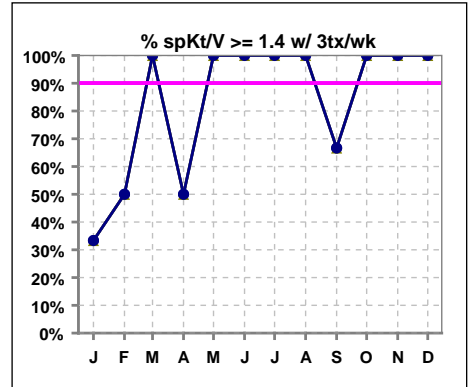


I. ADEQUACY OF DIALYSIS

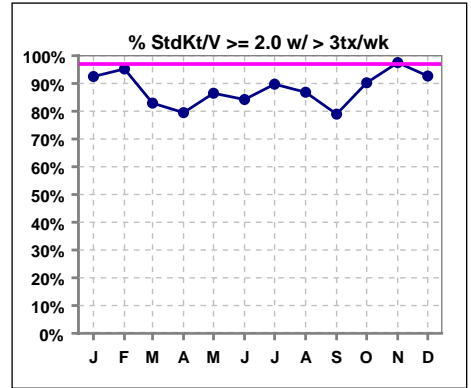
	Jan	Feb	Mar	Apr	May	Jun	Jul	Aug	Sep	Oct	Nov	Dec
# spKt/V w/3tx/wk	3	4	2	2	2	2	2	2	3	2	2	2
# spKt/V >=1.2 w/3tx/wk	2	3	2	2	2	2	2	2	3	2	2	2
Pop. Mean	1.04	1.27	1.62	1.51	1.61	1.70	1.62	1.79	1.52	1.74	1.80	1.55
Std. Deviation	0.90	0.88	0.02	0.23	0.07	0.06	0.15	0.38	0.16	0.13	0.20	0.04
% >=1.2 w/3tx/wk	67%	75%	100%	100%	100%	100%	100%	100%	100%	100%	100%	100%



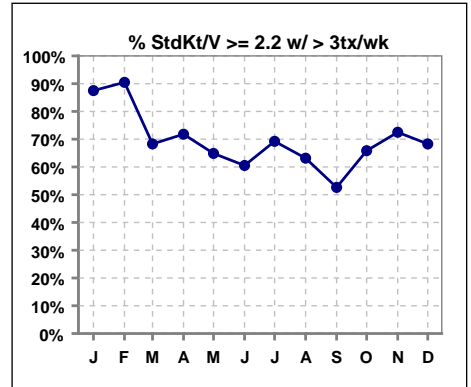
	Jan	Feb	Mar	Apr	May	Jun	Jul	Aug	Sep	Oct	Nov	Dec
# spKt/V w/3tx/wk	3	4	2	2	2	2	2	2	3	2	2	2
# spKt/V >=1.4 w/3tx/wk	1	2	2	1	2	2	2	2	2	2	2	2
Pop. Mean	1.04	1.27	1.62	1.51	1.61	1.70	1.62	1.79	1.52	1.74	1.80	1.55
Std. Deviation	0.90	0.88	0.02	0.23	0.07	0.06	0.15	0.38	0.16	0.13	0.20	0.04
% >=1.4 w/3tx/wk	33%	50%	100%	50%	100%	100%	100%	100%	67%	100%	100%	100%



	Jan	Feb	Mar	Apr	May	Jun	Jul	Aug	Sep	Oct	Nov	Dec
# StdKt/V w/>3tx/wk	40	42	41	39	37	38	39	38	38	41	40	41
# >= 2.0 w/>3tx/wk	37	40	34	31	32	32	35	33	30	37	39	38
Pop. Mean	3.06	3.14	2.62	2.53	2.47	2.41	2.46	2.38	2.35	2.37	2.40	2.38
Std. Deviation	0.69	0.72	0.72	0.62	0.61	0.52	0.51	0.40	0.52	0.43	0.28	0.35
% >= 2.0 w/>3tx/wk	93%	95%	83%	79%	86%	84%	90%	87%	79%	90%	98%	93%

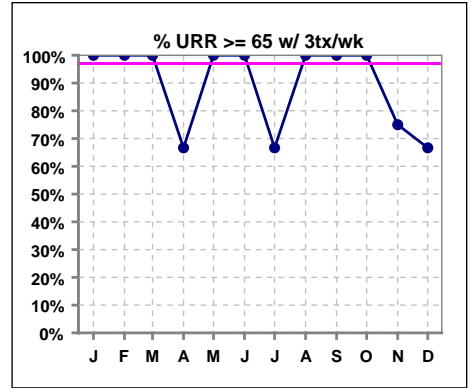


	Jan	Feb	Mar	Apr	May	Jun	Jul	Aug	Sep	Oct	Nov	Dec
# StdKt/V w/>3tx/wk	40	42	41	39	37	38	39	38	38	41	40	41
# >= 2.2 w/>3tx/wk	35	38	28	28	24	23	27	24	20	27	29	28
Pop. Mean	3.06	3.14	2.62	2.53	2.47	2.41	2.46	2.38	2.35	2.37	2.40	2.38
Std. Deviation	0.69	0.72	0.72	0.62	0.61	0.52	0.51	0.40	0.52	0.43	0.28	0.35
% >= 2.2 w/>3tx/wk	88%	90%	68%	72%	65%	61%	69%	63%	53%	66%	73%	68%



I. ADEQUACY OF DIALYSIS - CONT.

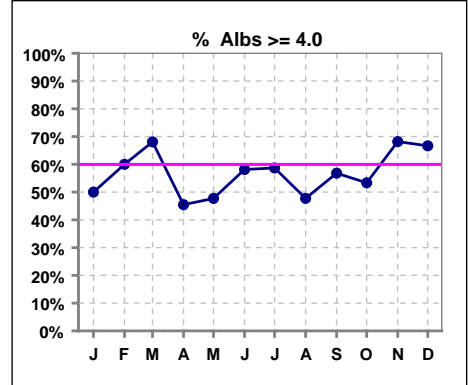
	Jan	Feb	Mar	Apr	May	Jun	Jul	Aug	Sep	Oct	Nov	Dec
# URR w/ 3tx/wk	3	3	2	3	2	2	3	3	3	2	4	3
# URR>=65 w/ 3tx/wk	3	3	2	2	2	2	2	3	3	2	3	2
Pop. Mean	72	71	75	64	75	77	65	75	73	76	70	65
Std. Deviation	4.93	5.19	0	15.00	2.12	3.55	16.55	5.68	3.16	1.96	17.61	15.10
% URR>=65 w/ 3tx/wk	100%	100%	100%	67%	100%	100%	67%	100%	100%	100%	75%	67%



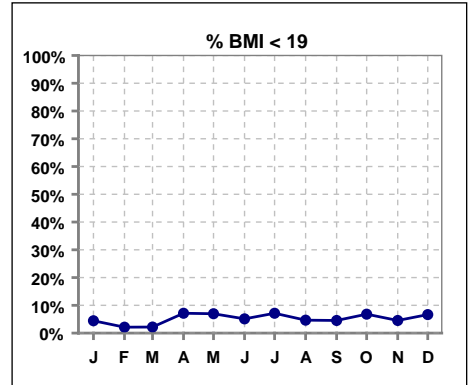
*Albumin values use BCG method - as of July 2001

II. NUTRITION

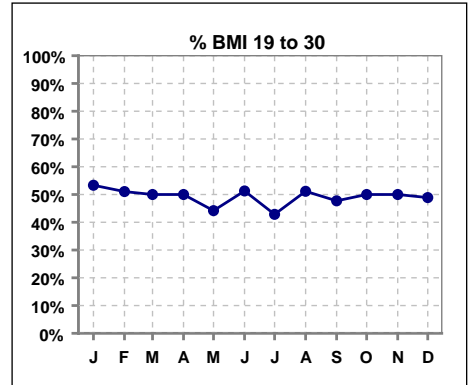
	Jan	Feb	Mar	Apr	May	Jun	Jul	Aug	Sep	Oct	Nov	Dec
# Albumin	46	50	47	44	44	43	46	44	44	45	44	45
# Albumin >= 4.0	23	30	32	20	21	25	27	21	25	24	30	30
Pop. Mean	4.0	4.0	4.0	3.9	3.9	4.0	4.0	3.9	3.9	4.0	4.1	4.0
Std. Deviation	0.41	0.35	0.37	0.38	0.41	0.40	0.41	0.35	0.30	0.34	0.33	0.34
% Alb >= 3.5	91%	90%	94%	84%	82%	88%	87%	93%	95%	91%	93%	93%
% Alb >= 3.0	100%	100%	98%	100%	100%	100%	100%	100%	100%	100%	100%	100%
% Alb >= 4.0	50%	60%	68%	45%	48%	58%	59%	48%	57%	53%	68%	67%



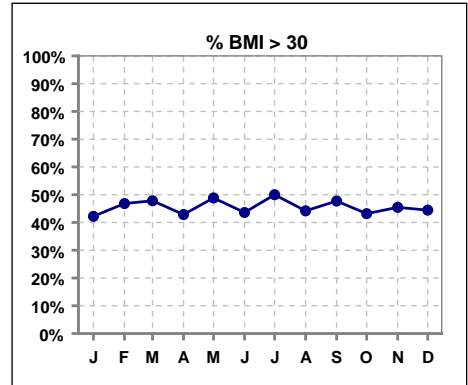
	Jan	Feb	Mar	Apr	May	Jun	Jul	Aug	Sep	Oct	Nov	Dec
# BMI	45	47	46	42	43	39	42	43	44	44	44	45
# BMI < 19	2	1	1	3	3	2	3	2	2	3	2	3
Pop. Mean	32	35	35	32	32	32	32	31	32	32	32	32
Std. Deviation	10.1	23.8	23.8	10.8	10.6	9.6	10.0	9.7	9.3	9.9	9.5	9.7
% BMI < 19	4%	2%	2%	7%	7%	5%	7%	5%	5%	7%	5%	7%



	Jan	Feb	Mar	Apr	May	Jun	Jul	Aug	Sep	Oct	Nov	Dec
# BMI	45	47	46	42	43	39	42	43	44	44	44	45
# BMI 19 to 30	24	24	23	21	19	20	18	22	21	22	22	22
Pop. Mean	32	35	35	32	32	32	32	31	32	32	32	32
Std. Deviation	10.1	23.8	23.8	10.8	10.6	9.6	10.0	9.7	9.3	9.9	9.5	9.7
% BMI 19 to 30	53%	51%	50%	50%	44%	51%	43%	51%	48%	50%	50%	49%

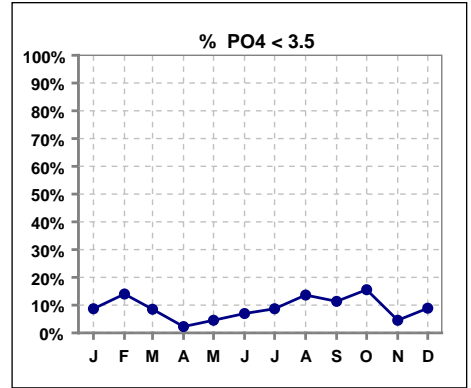


	Jan	Feb	Mar	Apr	May	Jun	Jul	Aug	Sep	Oct	Nov	Dec
# BMI	45	47	46	42	43	39	42	43	44	44	44	45
# BMI > 30	19	22	22	18	21	17	21	19	21	19	20	20
Pop. Mean	32	35	35	32	32	32	32	31	32	32	32	32
Std. Deviation	10.1	23.8	23.8	10.8	10.6	9.6	10.0	9.7	9.3	9.9	9.5	9.7
% BMI > 30	42%	47%	48%	43%	49%	44%	50%	44%	48%	43%	45%	44%

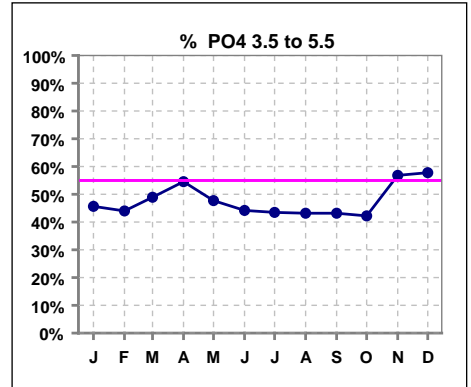


III. OSTEODYSTROPHY

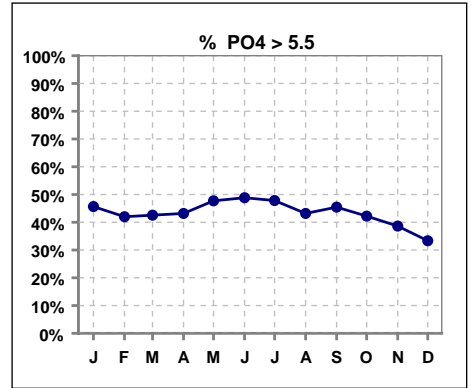
	Jan	Feb	Mar	Apr	May	Jun	Jul	Aug	Sep	Oct	Nov	Dec
# PO4	46	50	47	44	44	43	46	44	44	45	44	45
# PO4 < 3.5	4	7	4	1	2	3	4	6	5	7	2	4
Pop. Mean	5.4	5.5	5.4	5.5	5.5	5.6	5.6	5.3	5.3	5.3	5.4	5.4
Std. Deviation	1.56	1.83	1.55	1.47	1.48	1.54	1.84	1.63	1.50	1.67	1.30	1.42
% PO4 < 3.5	9%	14%	9%	2%	5%	7%	9%	14%	11%	16%	5%	9%



	Jan	Feb	Mar	Apr	May	Jun	Jul	Aug	Sep	Oct	Nov	Dec
# PO4	46	50	47	44	44	43	46	44	44	45	44	45
# PO4 3.5 to 5.5	21	22	23	24	21	19	20	19	19	19	25	26
Pop. Mean	5.4	5.5	5.4	5.5	5.5	5.6	5.6	5.3	5.3	5.3	5.4	5.4
Std. Deviation	1.56	1.83	1.55	1.47	1.48	1.54	1.84	1.63	1.50	1.67	1.30	1.42
% PO4 3.5 to 5.5	46%	44%	49%	55%	48%	44%	43%	43%	43%	42%	57%	58%

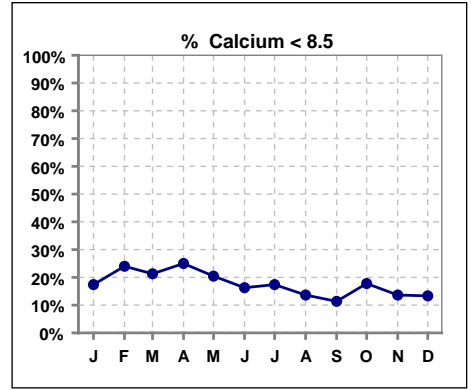


	Jan	Feb	Mar	Apr	May	Jun	Jul	Aug	Sep	Oct	Nov	Dec
# PO4	46	50	47	44	44	43	46	44	44	45	44	45
# PO4 > 5.5	21	21	20	19	21	21	22	19	20	19	17	15
Pop. Mean	5.4	5.5	5.4	5.5	5.5	5.6	5.6	5.3	5.3	5.3	5.4	5.4
Std. Deviation	1.56	1.83	1.55	1.47	1.48	1.54	1.84	1.63	1.50	1.67	1.30	1.42
% PO4 > 5.5	46%	42%	43%	43%	48%	49%	48%	43%	45%	42%	39%	33%

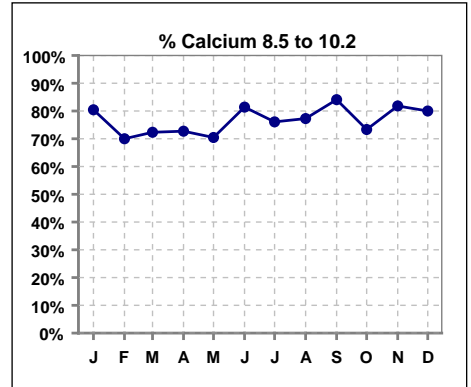


III. OSTEODYSTROPHY - CONT.

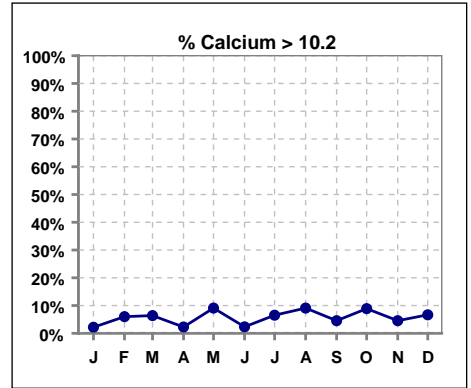
	Jan	Feb	Mar	Apr	May	Jun	Jul	Aug	Sep	Oct	Nov	Dec
# Calcium	46	50	47	44	44	43	46	44	44	45	44	45
# Calcium < 8.5	8	12	10	11	9	7	8	6	5	8	6	6
Pop. Mean	9.1	9.1	9.1	8.9	9.1	9.1	9.2	9.2	9.1	9.1	9.2	9.2
Std. Deviation	0.73	0.78	0.70	0.64	0.76	0.81	0.89	0.71	0.73	0.81	0.79	0.79
% Calcium < 8.5	17%	24%	21%	25%	20%	16%	17%	14%	11%	18%	14%	13%



	Jan	Feb	Mar	Apr	May	Jun	Jul	Aug	Sep	Oct	Nov	Dec
# Calcium	46	50	47	44	44	43	46	44	44	45	44	45
# Calcium 8.5 to 10.2	37	35	34	32	31	35	35	34	37	33	36	36
Pop. Mean	9.1	9.1	9.1	8.9	9.1	9.1	9.2	9.2	9.1	9.1	9.2	9.2
Std. Deviation	0.73	0.78	0.70	0.64	0.76	0.81	0.89	0.71	0.73	0.81	0.79	0.79
% Calcium 8.5 to 10.2	80%	70%	72%	73%	70%	81%	76%	77%	84%	73%	82%	80%

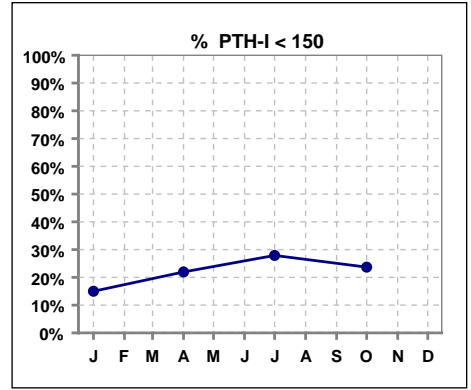


	Jan	Feb	Mar	Apr	May	Jun	Jul	Aug	Sep	Oct	Nov	Dec
# Calcium	46	50	47	44	44	43	46	44	44	45	44	45
# Calcium > 10.2	1	3	3	1	4	1	3	4	2	4	2	3
Pop. Mean	9.1	9.1	9.1	8.9	9.1	9.1	9.2	9.2	9.1	9.1	9.2	9.2
Std. Deviation	0.73	0.78	0.70	0.64	0.76	0.81	0.89	0.71	0.73	0.81	0.79	0.79
% Calcium > 10.2	2%	6%	6%	2%	9%	2%	7%	9%	5%	9%	5%	7%

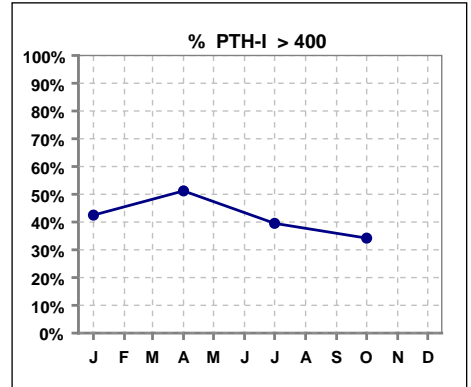


III. OSTEODYSTROPHY - CONT.

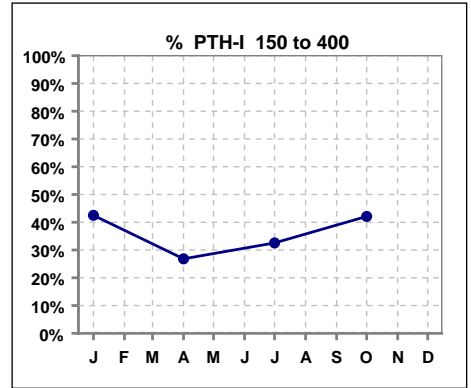
	Jan	Feb	Mar	Apr	May	Jun	Jul	Aug	Sep	Oct	Nov	Dec
# PTH-I	40			41			43			38		
# PTH-I < 150	6			9			12			9		
Pop. Mean	477			544			422			375		
Std. Deviation	410			530			364			354		
% PTH-I < 150	15%			22%			28%			24%		



	Jan	Feb	Mar	Apr	May	Jun	Jul	Aug	Sep	Oct	Nov	Dec
# PTH-I	40			41			43			38		
# PTH-I > 400	17			21			17			13		
Pop. Mean	477			544			422			375		
Std. Deviation	410			530			364			354		
% PTH-I > 400	43%			51%			40%			34%		



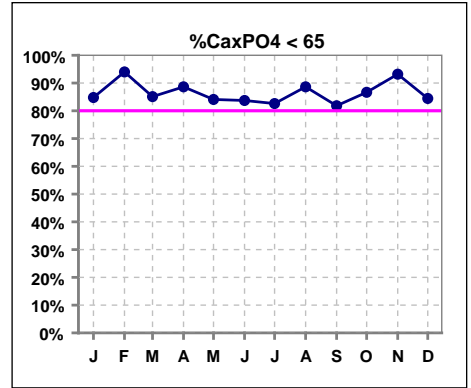
	Jan	Feb	Mar	Apr	May	Jun	Jul	Aug	Sep	Oct	Nov	Dec
# PTH-I	40			41			43			38		
# PTH-I 150 to 400	17			11			14			16		
Pop. Mean	477			544			422			375		
Std. Deviation	410			530			364			354		
% PTH-I 150 to 400	43%			27%			33%			42%		



Methodology: a) All labs for 'Adequacy of Dialysis', 'Nutrition', 'Osteodystrophy' and 'Anemia' based on last value of month; b) Access data takes last access of month; c) Values for 'Infection Control' uses most recent result.

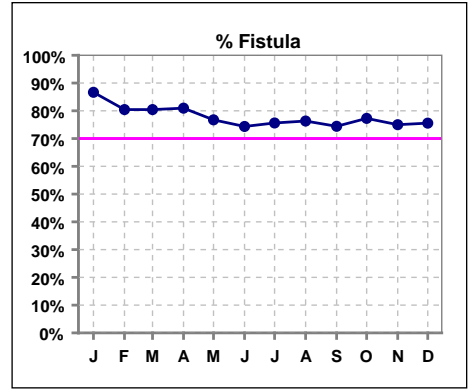
III. OSTEODYSTROPHY - CONT.

	Jan	Feb	Mar	Apr	May	Jun	Jul	Aug	Sep	Oct	Nov	Dec
# Ca x PO4	46	50	47	44	44	43	46	44	44	45	44	45
# Ca x PO4 < 65	39	47	40	39	37	36	38	39	36	39	41	38
Pop. Mean	49.4	49.4	49.0	49.9	50.3	51.3	52.7	49.6	49.3	48.5	49.3	49.2
Std. Deviation	14.8	15.6	14.4	13.8	14.1	15.2	17.8	14.9	14.8	15.6	13.2	12.7
% CaxPO4 < 65	85%	94%	85%	89%	84%	84%	83%	89%	82%	87%	93%	84%
% CaxPO4 < 55	67%	58%	72%	75%	64%	56%	63%	59%	64%	67%	68%	64%

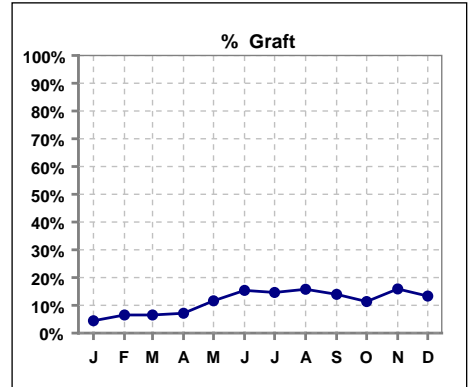


IV. ACCESS

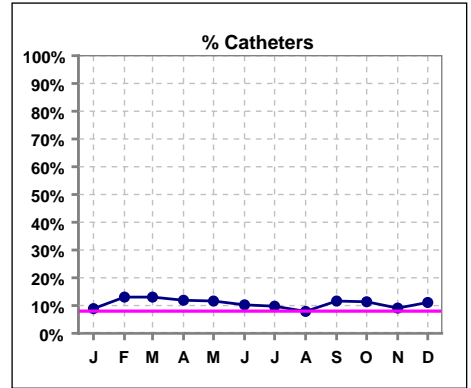
	Jan	Feb	Mar	Apr	May	Jun	Jul	Aug	Sep	Oct	Nov	Dec
# Access	45	46	46	42	43	39	41	38	43	44	44	45
# Fistula	39	37	37	34	33	29	31	29	32	34	33	34
% Fistula	87%	80%	80%	81%	77%	74%	76%	76%	74%	77%	75%	76%



	Jan	Feb	Mar	Apr	May	Jun	Jul	Aug	Sep	Oct	Nov	Dec
# Access	45	46	46	42	43	39	41	38	43	44	44	45
# Graft	2	3	3	3	5	6	6	6	6	5	7	6
% Graft	4%	7%	7%	7%	12%	15%	15%	16%	14%	11%	16%	13%



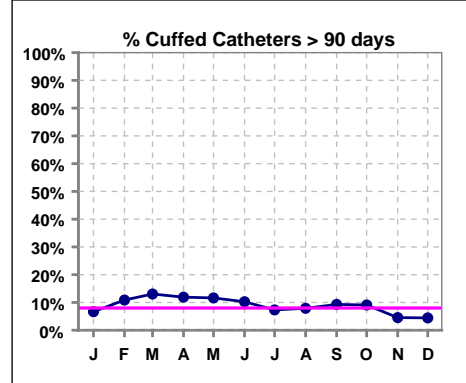
	Jan	Feb	Mar	Apr	May	Jun	Jul	Aug	Sep	Oct	Nov	Dec
# Access	45	46	46	42	43	39	41	38	43	44	44	45
# Catheters	4	6	6	5	5	4	4	3	5	5	4	5
% Catheters	9%	13%	13%	12%	12%	10%	10%	8%	12%	11%	9%	11%



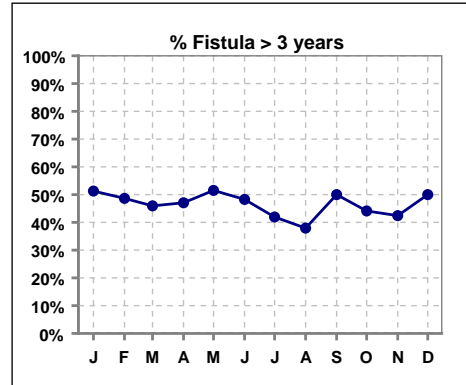
IV. ACCESS - CONT.

Cuffed Catheters > 90 days

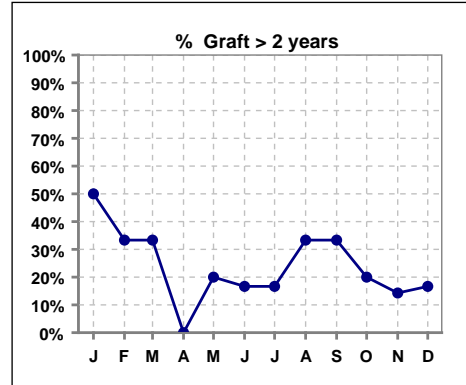
	Jan	Feb	Mar	Apr	May	Jun	Jul	Aug	Sep	Oct	Nov	Dec
# Access	45	46	46	42	43	39	41	38	43	44	44	45
# Cuffed Catheters	3	5	6	5	5	4	3	3	4	4	2	2
% Cuffed Catheters	7%	11%	13%	12%	12%	10%	7%	8%	9%	9%	5%	4%



	Jan	Feb	Mar	Apr	May	Jun	Jul	Aug	Sep	Oct	Nov	Dec
# Fistula	39	37	37	34	33	29	31	29	32	34	33	34
# Fistula > 3 yrs	20	18	17	16	17	14	13	11	16	15	14	17
% Fistula > 3 yrs	51%	49%	46%	47%	52%	48%	42%	38%	50%	44%	42%	50%



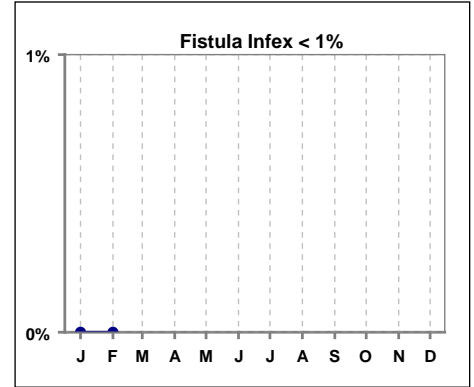
	Jan	Feb	Mar	Apr	May	Jun	Jul	Aug	Sep	Oct	Nov	Dec
# Graft	2	3	3	3	5	6	6	6	6	5	7	6
# Graft > 2 yrs	1	1	1	0	1	1	1	2	2	1	1	1
% Graft > 2 yrs	50%	33%	33%	0%	20%	17%	17%	33%	33%	20%	14%	17%



IV. ACCESS - CONT.

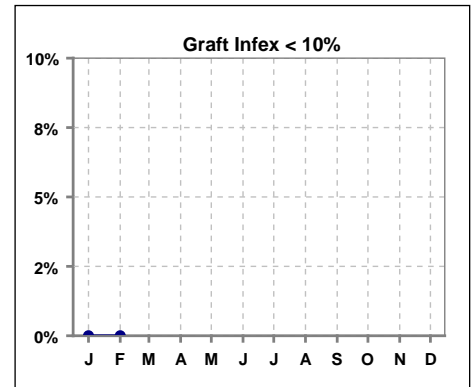
Infection per use-life of access fistula

	Jan	Feb	Mar	Apr	May	Jun	Jul	Aug	Sep	Oct	Nov	Dec
Infex per use-life	0	0										



Infection per use-life of access graft

	Jan	Feb	Mar	Apr	May	Jun	Jul	Aug	Sep	Oct	Nov	Dec
Infex per use-life	0	0										



Thrombosis Episode - access fistula

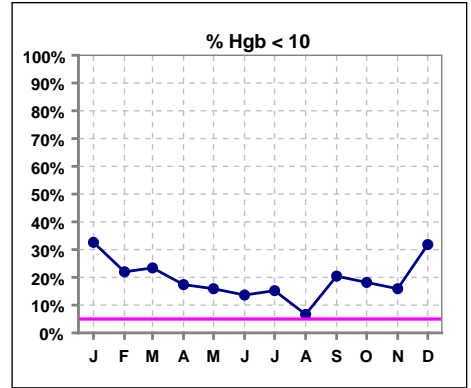
	Jan	Feb	Mar	Apr	May	Jun	Jul	Aug	Sep	Oct	Nov	Dec
Current Month	0	0.04								0.02		
Rolling Year-to-date	0	0.01	0.01	0.01	0.00	0.00	0.00	0.00	0.00	0.01	0.01	0.01

Thrombosis Episode - access graft

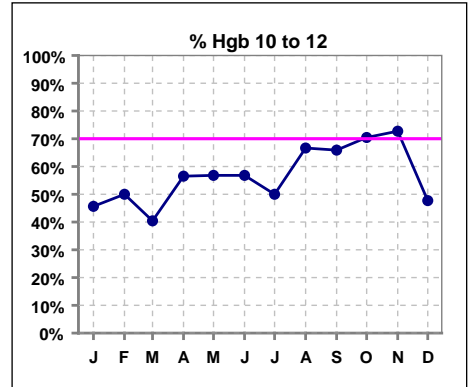
	Jan	Feb	Mar	Apr	May	Jun	Jul	Aug	Sep	Oct	Nov	Dec
Current Month	0	0										
Rolling Year-to-date	0	0										

V. ANEMIA

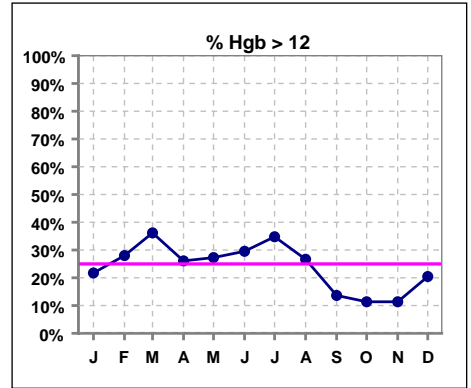
	Jan	Feb	Mar	Apr	May	Jun	Jul	Aug	Sep	Oct	Nov	Dec
# Hgb	46	50	47	46	44	44	46	45	44	44	44	44
# Hgb < 10	15	11	11	8	7	6	7	3	9	8	7	14
Pop. Mean	10.7	11.0	11.3	11.3	11.4	11.4	11.5	11.3	10.9	10.9	11.0	10.9
Std. Deviation	1.4	1.4	1.6	1.4	1.4	1.3	1.4	1.2	1.3	1.2	1.4	1.2
% Hgb < 10	33%	22%	23%	17%	16%	14%	15%	7%	20%	18%	16%	32%



	Jan	Feb	Mar	Apr	May	Jun	Jul	Aug	Sep	Oct	Nov	Dec
# Hgb	46	50	47	46	44	44	46	45	44	44	44	44
# Hgb 10 to 12	21	25	19	26	25	25	23	30	29	31	32	21
Pop. Mean	10.7	11.0	11.3	11.3	11.4	11.4	11.5	11.3	10.9	10.9	11.0	10.9
Std. Deviation	1.4	1.4	1.6	1.4	1.4	1.3	1.4	1.2	1.3	1.2	1.4	1.2
% Hgb 10 to 12	46%	50%	40%	57%	57%	57%	50%	67%	66%	70%	73%	48%



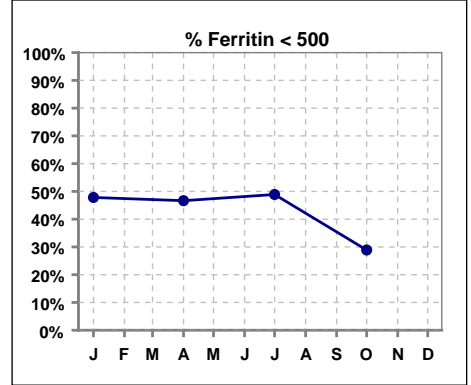
	Jan	Feb	Mar	Apr	May	Jun	Jul	Aug	Sep	Oct	Nov	Dec
# Hgb	46	50	47	46	44	44	46	45	44	44	44	44
# Hgb > 12	10	14	17	12	12	13	16	12	6	5	5	9
Pop. Mean	10.7	11.0	11.3	11.3	11.4	11.4	11.5	11.3	10.9	10.9	11.0	10.9
Std. Deviation	1.4	1.4	1.6	1.4	1.4	1.3	1.4	1.2	1.3	1.2	1.4	1.2
% Hgb > 12	22%	28%	36%	26%	27%	30%	35%	27%	14%	11%	11%	20%



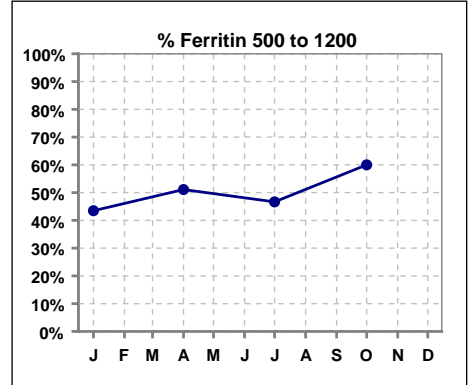
V. ANEMIA - CONT.

Iron Profile

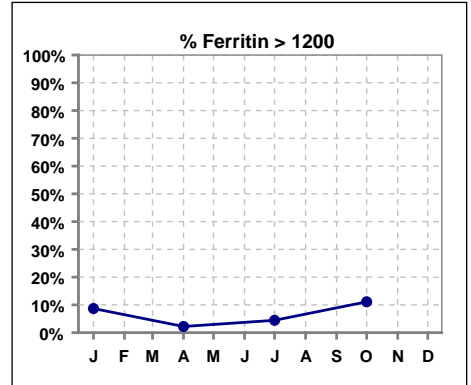
	Jan	Feb	Mar	Apr	May	Jun	Jul	Aug	Sep	Oct	Nov	Dec
# Ferritin	46			45			45			45		
# Ferritin < 500	22			21			22			13		
Pop. Mean	582			485			527			702		
Std. Deviation	396			304			410			389		
% Ferritin < 500	48%			47%			49%			29%		



	Jan	Feb	Mar	Apr	May	Jun	Jul	Aug	Sep	Oct	Nov	Dec
# Ferritin	46			45			45			45		
# Ferritin 500 to 1200	20			23			21			27		
Pop. Mean	582			485			527			702		
Std. Deviation	396			304			410			389		
% Ferritin 500 to 1200	43%			51%			47%			60%		

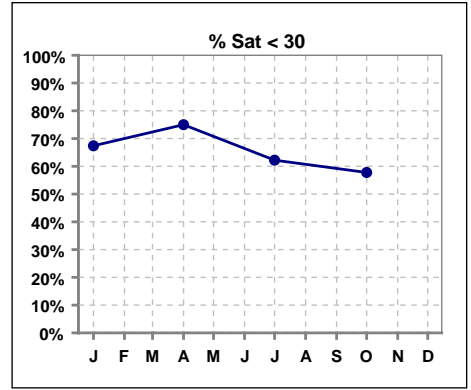


	Jan	Feb	Mar	Apr	May	Jun	Jul	Aug	Sep	Oct	Nov	Dec
# Ferritin	46			45			45			45		
# Ferritin > 1200	4			1			2			5		
Pop. Mean	582			485			527			702		
Std. Deviation	396			304			410			389		
% Ferritin > 1200	9%			2%			4%			11%		

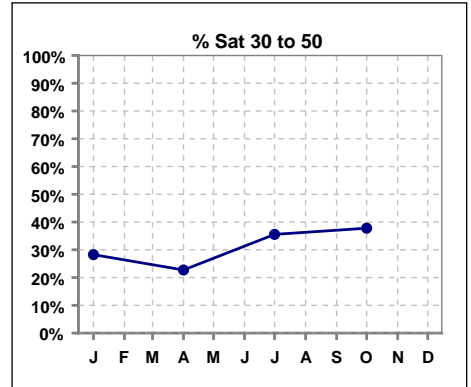


V. ANEMIA - CONT.

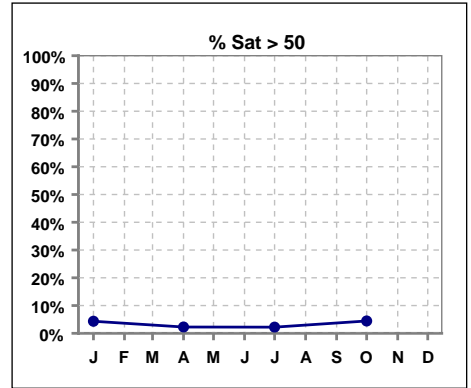
	Jan	Feb	Mar	Apr	May	Jun	Jul	Aug	Sep	Oct	Nov	Dec
# % Sat	46			44			45			45		
# % Sat < 30	31			33			28			26		
Pop. Mean	28			25			25			29		
Std. Deviation	14			10			10			13		
% % Sat < 30	67%			75%			62%			58%		



	Jan	Feb	Mar	Apr	May	Jun	Jul	Aug	Sep	Oct	Nov	Dec
# % Sat	46			44			45			45		
# % Sat 30 to 50	13			10			16			17		
Pop. Mean	28			25			25			29		
Std. Deviation	14			10			10			13		
% Sat% 30 to 50	28%			23%			36%			38%		



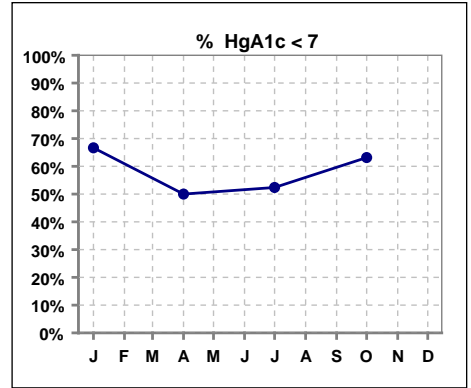
	Jan	Feb	Mar	Apr	May	Jun	Jul	Aug	Sep	Oct	Nov	Dec
# % Sat	46			44			45			45		
# % Sat > 50	2			1			1			2		
Pop. Mean	28			25			25			29		
Std. Deviation	14			10			10			13		
% % Sat > 50	4%			2%			2%			4%		



Methodology: a) All labs for 'Adequacy of Dialysis', 'Nutrition', 'Osteodystrophy' and 'Anemia' based on last value of month; b) Access data takes last access of month; c) Values for 'Infection Control' uses most recent result.

VI. Diabetes

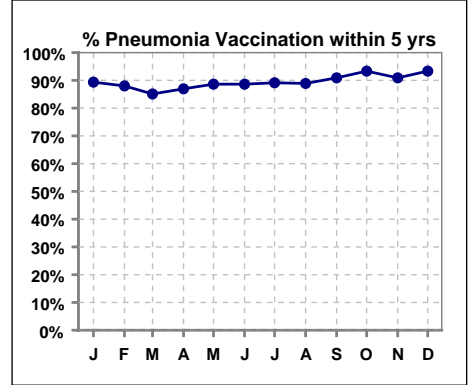
	Jan	Feb	Mar	Apr	May	Jun	Jul	Aug	Sep	Oct	Nov	Dec
# HgA1c	15			18			21			19		
# HgA1c < 7	10			9			11			12		
Pop. Mean	6.7			7.0			6.9			6.7		
Std. Deviation	1.30			1.24			1.32			1.04		
% HgA1c < 7	67%			50%			52%			63%		



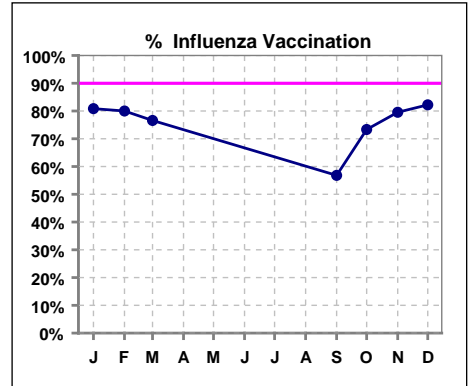
VII. Infection Control

Pneumonia vaccination within the past five years

	Jan	Feb	Mar	Apr	May	Jun	Jul	Aug	Sep	Oct	Nov	Dec
# Patient	47	50	47	46	44	44	46	45	44	45	44	45
# Pneumonia	42	44	40	40	39	39	41	40	40	42	40	42
% Pneumonia	89%	88%	85%	87%	89%	89%	89%	89%	91%	93%	91%	93%



	Jan	Feb	Mar	Apr	May	Jun	Jul	Aug	Sep	Oct	Nov	Dec
# Patient	47	50	47						44	45	44	45
# Influenza	38	40	36						25	33	35	37
% Influenza	81%	80%	77%						57%	73%	80%	82%



Methodology: a) All labs for 'Adequacy of Dialysis', 'Nutrition', 'Osteodystrophy' and 'Anemia' based on last value of month; b) Access data takes last access of month; c) Values for 'Infection Control' uses most recent result.