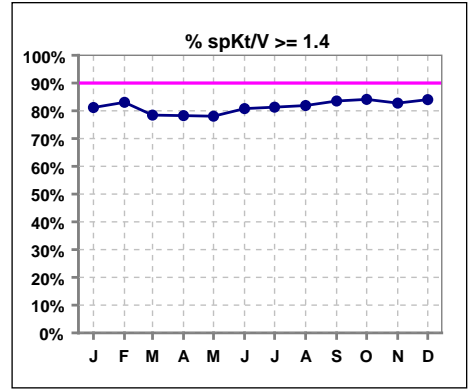
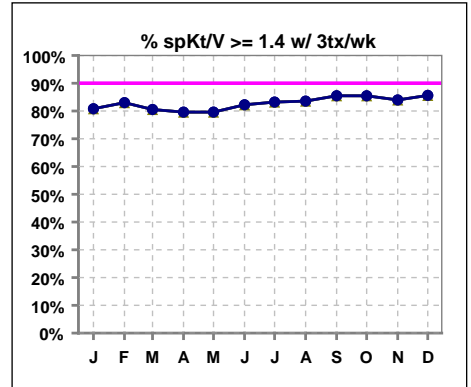


**I. ADEQUACY OF DIALYSIS**

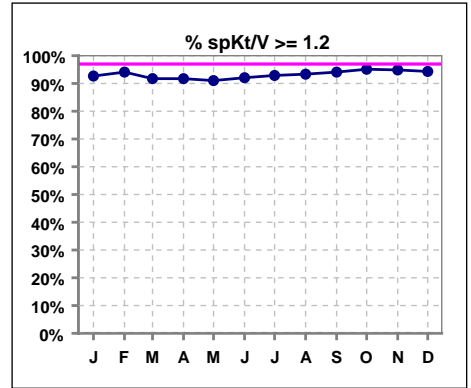
	Jan	Feb	Mar	Apr	May	Jun	Jul	Aug	Sep	Oct	Nov	Dec
# spKt/V	1174	1169	1174	1173	1194	1197	1209	1188	1202	1209	1230	1233
# spKt/V >= 1.4	953	971	921	918	932	967	983	973	1004	1017	1018	1036
Pop. Mean	1.63	1.65	1.60	1.60	1.61	1.63	1.64	1.64	1.65	1.66	1.65	1.65
Std. Deviation	0.33	0.34	0.34	0.33	0.32	0.33	0.35	0.33	0.31	0.33	0.31	0.31
% spKt/V >= 1.4	81%	83%	78%	78%	78%	81%	81%	82%	84%	84%	83%	84%



	Jan	Feb	Mar	Apr	May	Jun	Jul	Aug	Sep	Oct	Nov	Dec
# spKt/V w/ 3tx/wk	1115	1112	1115	1122	1142	1143	1144	1119	1130	1143	1161	1168
# spKt/V >= 1.4 w/3tx/wk	901	923	898	893	909	940	952	935	966	977	975	1000
Pop. Mean	1.62	1.65	1.62	1.61	1.63	1.65	1.66	1.66	1.67	1.68	1.66	1.67
Std. Deviation	0.32	0.34	0.33	0.33	0.32	0.33	0.34	0.32	0.30	0.32	0.30	0.31
% >= 1.4 w/3tx/wk	81%	83%	81%	80%	80%	82%	83%	84%	85%	85%	84%	86%

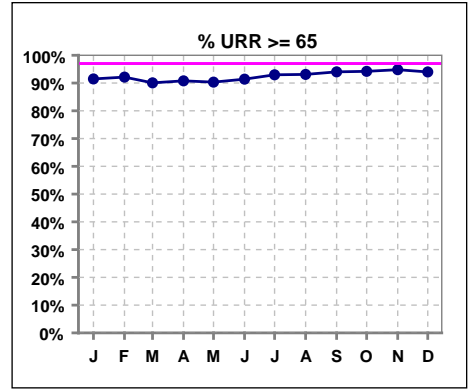


	Jan	Feb	Mar	Apr	May	Jun	Jul	Aug	Sep	Oct	Nov	Dec
# spKt/V	1174	1169	1174	1173	1194	1197	1209	1188	1202	1209	1230	1233
# spKt/V >= 1.2	1088	1100	1077	1076	1087	1102	1123	1109	1131	1150	1167	1163
Pop. Mean	1.63	1.65	1.60	1.60	1.61	1.63	1.64	1.64	1.65	1.66	1.65	1.65
Std. Deviation	0.33	0.34	0.34	0.33	0.32	0.33	0.35	0.33	0.31	0.33	0.31	0.31
% spKt/V >= 1.2	93%	94%	92%	92%	91%	92%	93%	93%	94%	95%	95%	94%

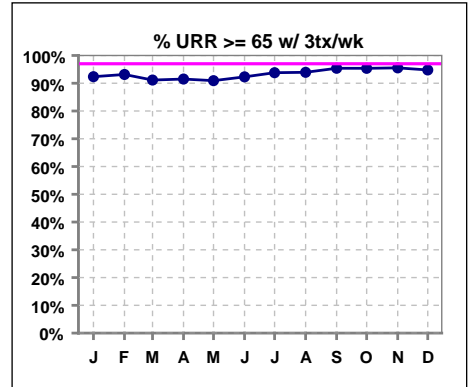


**I. ADEQUACY OF DIALYSIS - CONT.**

	Jan	Feb	Mar	Apr	May	Jun	Jul	Aug	Sep	Oct	Nov	Dec
# URR	1173	1170	1178	1183	1199	1197	1209	1190	1205	1211	1233	1233
# URR >= 65	1073	1078	1061	1074	1083	1094	1124	1108	1133	1141	1169	1159
Pop. Mean	74	75	74	74	74	75	75	75	75	75	75	75
Std. Deviation	7.04	6.65	7.32	7.17	7.27	6.91	7.26	6.79	6.78	6.53	6.16	6.50
% URR >= 65	91%	92%	90%	91%	90%	91%	93%	93%	94%	94%	95%	94%



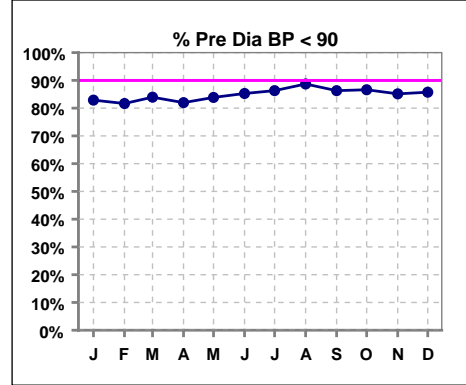
	Jan	Feb	Mar	Apr	May	Jun	Jul	Aug	Sep	Oct	Nov	Dec
# URR w/ 3tx/wk	1112	1111	1118	1131	1146	1142	1144	1121	1129	1145	1165	1169
# URR>=65 w/ 3tx/wk	1027	1035	1019	1035	1042	1054	1073	1053	1077	1092	1113	1108
Pop. Mean	74	75	74	74	75	75	75	75	76	76	76	76
Std. Deviation	6.97	6.49	7.23	7.06	7.05	6.71	7.00	6.65	6.10	5.94	6.05	6.38
% URR>=65 w/ 3tx/wk	92%	93%	91%	92%	91%	92%	94%	94%	95%	95%	96%	95%



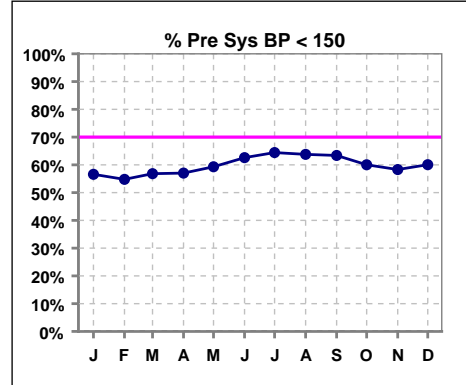
**I. ADEQUACY OF DIALYSIS - CONT.**

**Blood Pressure Control (Pre)**

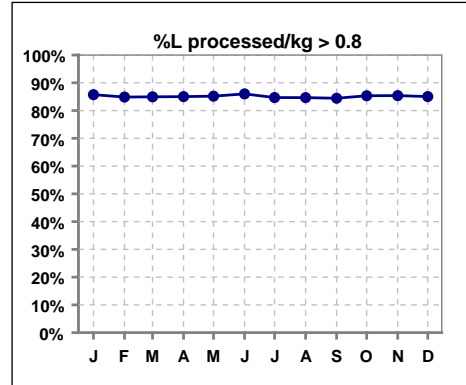
	Jan	Feb	Mar	Apr	May	Jun	Jul	Aug	Sep	Oct	Nov	Dec
# Pre Dia BP	1198	1183	1202	1215	1214	1222	1234	1212	1240	1241	1252	1262
# Pre Dia BP < 90	993	966	1009	996	1018	1042	1065	1075	1070	1075	1066	1082
Pop. Mean	76	77	77	77	76	75	74	74	74	75	75	75
Std. Deviation	14.3	14.2	13.8	14.4	13.7	13.7	14.0	13.7	14.1	13.8	14.0	14.3
% Pre Dia BP < 90	83%	82%	84%	82%	84%	85%	86%	89%	86%	87%	85%	86%



	Jan	Feb	Mar	Apr	May	Jun	Jul	Aug	Sep	Oct	Nov	Dec
# Pre Sys BP	1198	1183	1202	1215	1214	1222	1234	1212	1240	1241	1252	1262
# Pre Sys BP < 150	678	648	683	693	720	765	795	773	786	745	730	758
Pop. Mean	146	147	146	146	145	143	142	142	142	144	145	144
Std. Deviation	21.7	21.3	21.3	21.9	21.5	21.4	21.9	21.8	21.9	21.2	21.7	21.9
%Pre Sys BP <150	57%	55%	57%	57%	59%	63%	64%	64%	63%	60%	58%	60%



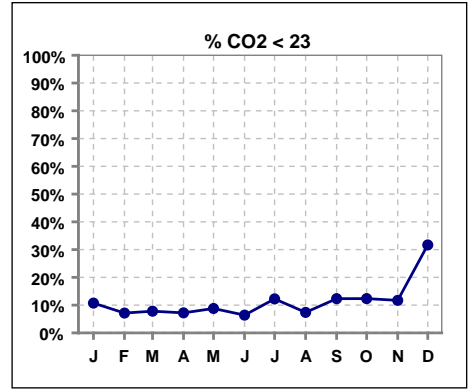
	Jan	Feb	Mar	Apr	May	Jun	Jul	Aug	Sep	Oct	Nov	Dec
# L processed/kg	1198	1183	1202	1215	1215	1222	1234	1212	1240	1241	1252	1263
# L processed/kg>0.8	1027	1004	1021	1033	1035	1051	1045	1026	1047	1059	1069	1074
Pop. Mean	1	1	1	1	1	1	1	1	1	1	1	1
Std. Deviation	0.3	0.3	0.3	0.3	0.3	0.3	0.3	0.3	0.3	0.3	0.3	0.3
% L processed/kg>0.8	86%	85%	85%	85%	85%	86%	85%	85%	84%	85%	85%	85%



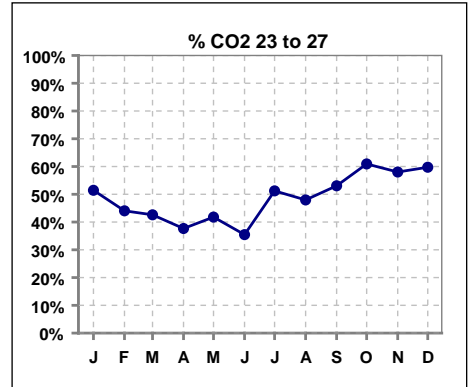
Methodology: a) All labs for 'Adequacy of Dialysis', 'Nutrition', 'Osteodystrophy', 'Anemia' and 'Diabetes' based on last value of month; b) BP's and #L processed are average of all values for month; c) Access data takes last access of month; d) Values for SGA and 'Infection Control' use most recent result.

**I. ADEQUACY OF DIALYSIS - CONT.**

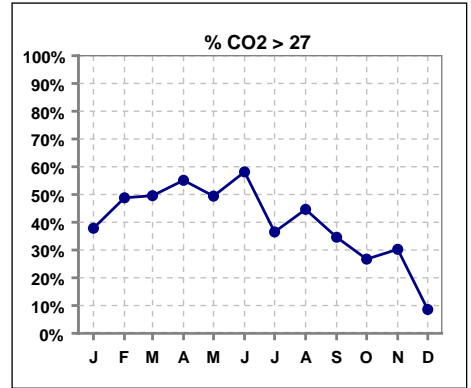
	Jan	Feb	Mar	Apr	May	Jun	Jul	Aug	Sep	Oct	Nov	Dec
# CO2	1184	1176	1190	1192	1206	1204	1216	1205	1225	1231	1246	1247
# CO2 < 23	127	84	93	86	106	77	149	89	151	152	146	395
Pop. Mean	26	27	27	27	27	28	26	27	26	26	26	24
Std. Deviation	3.18	3.04	3.11	3.15	3.26	2.99	3.24	2.91	3.11	2.93	3.00	2.86
% CO2 < 23	11%	7%	8%	7%	9%	6%	12%	7%	12%	12%	12%	32%



	Jan	Feb	Mar	Apr	May	Jun	Jul	Aug	Sep	Oct	Nov	Dec
# CO2	1184	1176	1190	1192	1206	1204	1216	1205	1225	1231	1246	1247
# CO2 23 to 27	609	518	507	449	504	427	623	578	650	750	723	745
Pop. Mean	26	27	27	27	27	28	26	27	26	26	26	24
Std. Deviation	3.18	3.04	3.11	3.15	3.26	2.99	3.24	2.91	3.11	2.93	3.00	2.86
% CO2 23 to 27	51%	44%	43%	38%	42%	35%	51%	48%	53%	61%	58%	60%



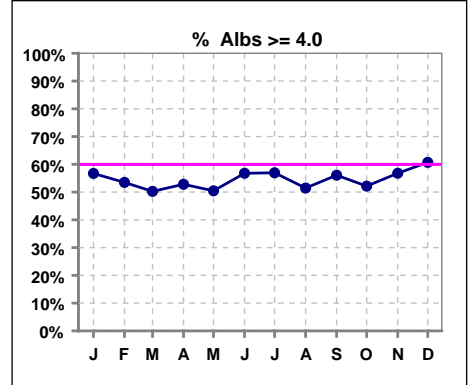
	Jan	Feb	Mar	Apr	May	Jun	Jul	Aug	Sep	Oct	Nov	Dec
# CO2	1184	1176	1190	1192	1206	1204	1216	1205	1225	1231	1246	1247
# CO2 > 27	448	574	590	657	596	700	444	538	424	329	377	107
Pop. Mean	26	27	27	27	27	28	26	27	26	26	26	24
Std. Deviation	3.18	3.04	3.11	3.15	3.26	2.99	3.24	2.91	3.11	2.93	3.00	2.86
% CO2 > 27	38%	49%	50%	55%	49%	58%	37%	45%	35%	27%	30%	9%



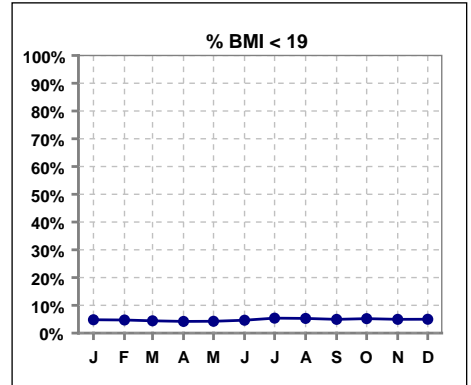
\*Albumin values use BCG method - as of July 2001

**II. NUTRITION**

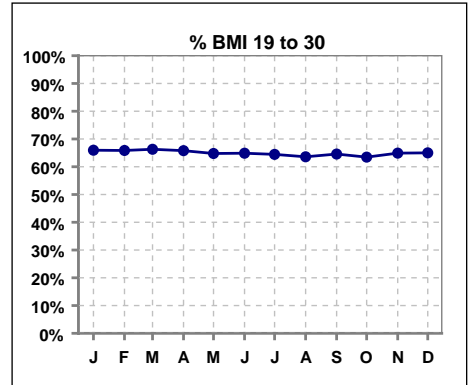
	Jan	Feb	Mar	Apr	May	Jun	Jul	Aug	Sep	Oct	Nov	Dec
# Albumin	1185	1176	1190	1193	1207	1203	1215	1205	1225	1231	1245	1247
# Albumin >= 4.0	672	629	598	630	609	683	692	620	687	642	707	757
Pop. Mean	4.0	3.9	3.9	3.9	3.9	4.0	4.0	3.9	4.0	3.9	4.0	4.0
Std. Deviation	0.39	0.39	0.39	0.40	0.40	0.39	0.38	0.38	0.39	0.36	0.39	0.39
% Alb >= 3.5	91%	91%	89%	90%	89%	91%	91%	91%	92%	90%	91%	91%
% Alb >= 3.0	98%	98%	98%	98%	97%	98%	98%	98%	98%	98%	98%	98%
% Alb >= 4.0	57%	53%	50%	53%	50%	57%	57%	51%	56%	52%	57%	61%



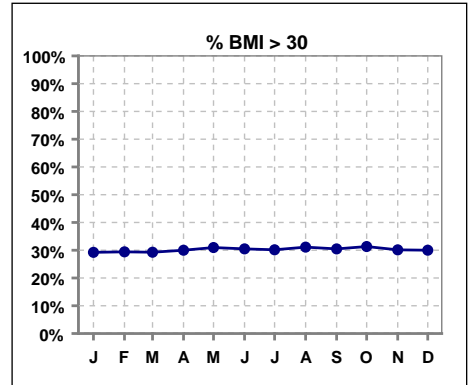
	Jan	Feb	Mar	Apr	May	Jun	Jul	Aug	Sep	Oct	Nov	Dec
# BMI	1166	1166	1175	1190	1198	1207	1207	1192	1214	1229	1231	1243
# BMI < 19	56	55	52	50	51	56	65	63	60	64	61	62
Pop. Mean	28	28	28	28	28	28	28	28	28	28	28	28
Std. Deviation	7.1	7.8	7.2	7.2	9.5	8.2	6.9	8.3	6.9	7.0	7.7	7.7
% BMI < 19	5%	5%	4%	4%	4%	5%	5%	5%	5%	5%	5%	5%



	Jan	Feb	Mar	Apr	May	Jun	Jul	Aug	Sep	Oct	Nov	Dec
# BMI	1166	1166	1175	1190	1198	1207	1207	1192	1214	1229	1231	1243
# BMI 19 to 30	769	768	779	783	776	783	778	758	784	780	799	808
Pop. Mean	28	28	28	28	28	28	28	28	28	28	28	28
Std. Deviation	7.1	7.8	7.2	7.2	9.5	8.2	6.9	8.3	6.9	7.0	7.7	7.7
% BMI 19 to 30	66%	66%	66%	66%	65%	65%	64%	64%	65%	63%	65%	65%



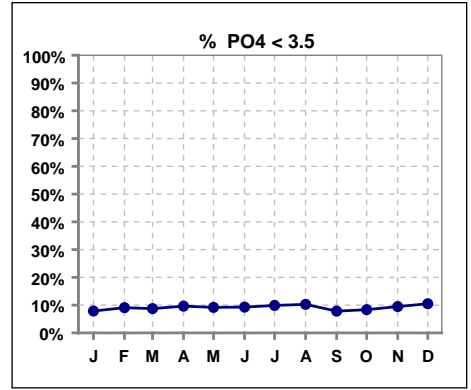
	Jan	Feb	Mar	Apr	May	Jun	Jul	Aug	Sep	Oct	Nov	Dec
# BMI	1166	1166	1175	1190	1198	1207	1207	1192	1214	1229	1231	1243
# BMI > 30	341	343	344	357	371	368	364	371	370	385	371	373
Pop. Mean	28	28	28	28	28	28	28	28	28	28	28	28
Std. Deviation	7.1	7.8	7.2	7.2	9.5	8.2	6.9	8.3	6.9	7.0	7.7	7.7
% BMI > 30	29%	29%	29%	30%	31%	30%	30%	31%	30%	31%	30%	30%



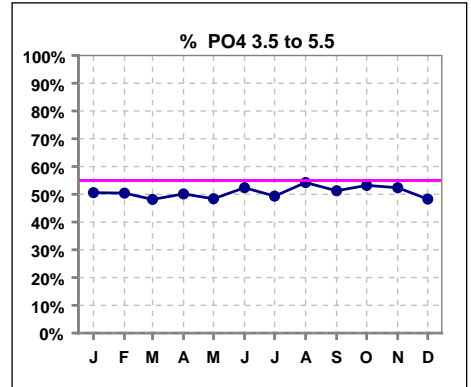
Methodology: a) All labs for 'Adequacy of Dialysis', 'Nutrition', 'Osteodystrophy', 'Anemia' and 'Diabetes' based on last value of month; b) BP's and #L processed are average of all values for month; c) Access data takes last access of month; d) Values for SGA and 'Infection Control' use most recent result.

**III. OSTEODYSTROPHY**

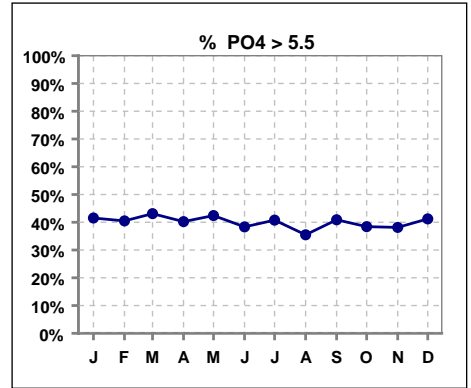
	Jan	Feb	Mar	Apr	May	Jun	Jul	Aug	Sep	Oct	Nov	Dec
# PO4	1182	1178	1190	1193	1207	1205	1214	1206	1225	1231	1245	1247
# PO4 < 3.5	93	107	104	115	111	112	120	124	96	103	118	131
Pop. Mean	5.4	5.4	5.4	5.4	5.4	5.3	5.4	5.2	5.4	5.3	5.3	5.4
Std. Deviation	1.60	1.59	1.63	1.61	1.66	1.59	1.70	1.60	1.63	1.59	1.60	1.68
% PO4 < 3.5	8%	9%	9%	10%	9%	9%	10%	10%	8%	8%	9%	11%



	Jan	Feb	Mar	Apr	May	Jun	Jul	Aug	Sep	Oct	Nov	Dec
# PO4	1182	1178	1190	1193	1207	1205	1214	1206	1225	1231	1245	1247
# PO4 3.5 to 5.5	598	594	573	598	584	631	599	654	628	655	652	602
Pop. Mean	5.4	5.4	5.4	5.4	5.4	5.3	5.4	5.2	5.4	5.3	5.3	5.4
Std. Deviation	1.60	1.59	1.63	1.61	1.66	1.59	1.70	1.60	1.63	1.59	1.60	1.68
% PO4 3.5 to 5.5	51%	50%	48%	50%	48%	52%	49%	54%	51%	53%	52%	48%

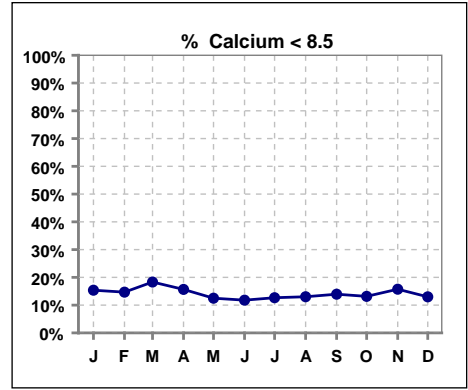


	Jan	Feb	Mar	Apr	May	Jun	Jul	Aug	Sep	Oct	Nov	Dec
# PO4	1182	1178	1190	1193	1207	1205	1214	1206	1225	1231	1245	1247
# PO4 > 5.5	491	477	513	480	512	462	495	428	501	473	475	514
Pop. Mean	5.4	5.4	5.4	5.4	5.4	5.3	5.4	5.2	5.4	5.3	5.3	5.4
Std. Deviation	1.60	1.59	1.63	1.61	1.66	1.59	1.70	1.60	1.63	1.59	1.60	1.68
% PO4 > 5.5	42%	40%	43%	40%	42%	38%	41%	35%	41%	38%	38%	41%

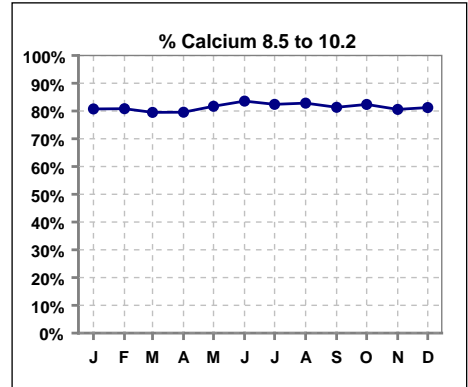


**III. OSTEODYSTROPHY - CONT.**

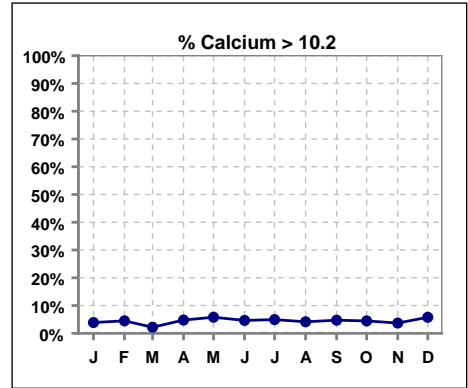
	Jan	Feb	Mar	Apr	May	Jun	Jul	Aug	Sep	Oct	Nov	Dec
# Calcium	1184	1179	1190	1194	1208	1205	1216	1206	1227	1231	1246	1247
# Calcium < 8.5	182	173	218	187	151	142	154	157	171	162	196	162
Pop. Mean	9.1	9.2	9.0	9.1	9.2	9.2	9.2	9.2	9.2	9.2	9.1	9.2
Std. Deviation	0.74	0.72	0.71	0.75	0.74	0.71	0.75	0.71	0.73	0.70	0.71	0.74
<b>% Calcium &lt; 8.5</b>	<b>15%</b>	<b>15%</b>	<b>18%</b>	<b>16%</b>	<b>13%</b>	<b>12%</b>	<b>13%</b>	<b>13%</b>	<b>14%</b>	<b>13%</b>	<b>16%</b>	<b>13%</b>



	Jan	Feb	Mar	Apr	May	Jun	Jul	Aug	Sep	Oct	Nov	Dec
# Calcium	1184	1179	1190	1194	1208	1205	1216	1206	1227	1231	1246	1247
# Calcium 8.5 to 10.2	956	953	946	950	987	1007	1002	999	998	1014	1004	1013
Pop. Mean	9.1	9.2	9.0	9.1	9.2	9.2	9.2	9.2	9.2	9.2	9.1	9.2
Std. Deviation	0.74	0.72	0.71	0.75	0.74	0.71	0.75	0.71	0.73	0.70	0.71	0.74
<b>% Calcium 8.5 to 10.2</b>	<b>81%</b>	<b>81%</b>	<b>79%</b>	<b>80%</b>	<b>82%</b>	<b>84%</b>	<b>82%</b>	<b>83%</b>	<b>81%</b>	<b>82%</b>	<b>81%</b>	<b>81%</b>



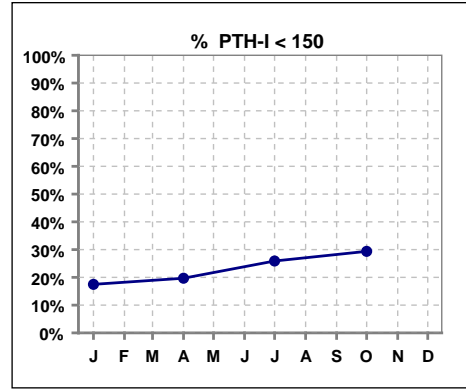
	Jan	Feb	Mar	Apr	May	Jun	Jul	Aug	Sep	Oct	Nov	Dec
# Calcium	1184	1179	1190	1194	1208	1205	1216	1206	1227	1231	1246	1247
# Calcium > 10.2	46	53	26	57	70	56	60	50	58	55	46	72
Pop. Mean	9.1	9.2	9.0	9.1	9.2	9.2	9.2	9.2	9.2	9.2	9.1	9.2
Std. Deviation	0.74	0.72	0.71	0.75	0.74	0.71	0.75	0.71	0.73	0.70	0.71	0.74
<b>% Calcium &gt; 10.2</b>	<b>4%</b>	<b>4%</b>	<b>2%</b>	<b>5%</b>	<b>6%</b>	<b>5%</b>	<b>5%</b>	<b>4%</b>	<b>5%</b>	<b>4%</b>	<b>4%</b>	<b>6%</b>



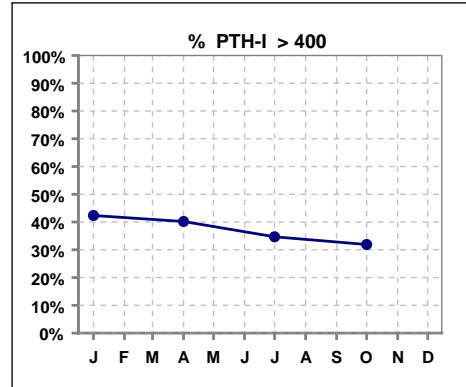
Methodology: a) All labs for 'Adequacy of Dialysis', 'Nutrition', 'Osteodystrophy', 'Anemia' and 'Diabetes' based on last value of month; b) BP's and #L processed are average of all values for month; c) Access data takes last access of month; d) Values for SGA and 'Infection Control' use most recent result.

**III. OSTEODYSTROPHY - CONT.**

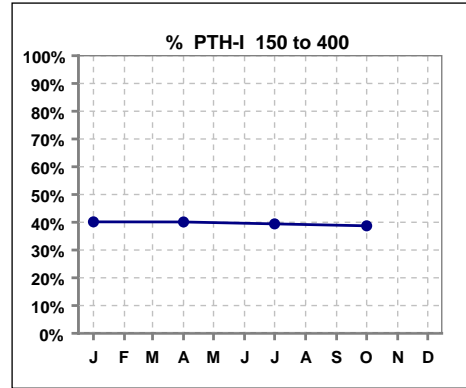
	Jan	Feb	Mar	Apr	May	Jun	Jul	Aug	Sep	Oct	Nov	Dec
# PTH-I	1178			1082			1205			1144		
# PTH-I < 150	206			213			312			336		
Pop. Mean	491			500			397			392		
Std. Deviation	472			521			416			460		
<b>% PTH-I &lt; 150</b>	<b>17%</b>			<b>20%</b>			<b>26%</b>			<b>29%</b>		



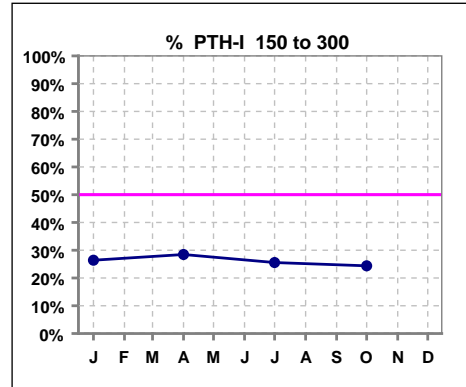
	Jan	Feb	Mar	Apr	May	Jun	Jul	Aug	Sep	Oct	Nov	Dec
# PTH-I	1178			1082			1205			1144		
# PTH-I > 400	499			435			418			365		
Pop. Mean	491			500			397			392		
Std. Deviation	472			521			416			460		
<b>% PTH-I &gt; 400</b>	<b>42%</b>			<b>40%</b>			<b>35%</b>			<b>32%</b>		



	Jan	Feb	Mar	Apr	May	Jun	Jul	Aug	Sep	Oct	Nov	Dec
# PTH-I	1178			1082			1205			1144		
# PTH-I 150 to 400	473			434			475			443		
Pop. Mean	491			500			397			392		
Std. Deviation	472			521			416			460		
<b>% PTH-I 150 to 400</b>	<b>40%</b>			<b>40%</b>			<b>39%</b>			<b>39%</b>		



	Jan	Feb	Mar	Apr	May	Jun	Jul	Aug	Sep	Oct	Nov	Dec
# PTH-I	1178			1082			1205			1144		
# PTH-I 150 to 300	311			308			308			279		
Pop. Mean	491			500			397			392		
Std. Deviation	472			521			416			460		
<b>% PTH-I 150 to 300</b>	<b>26%</b>			<b>28%</b>			<b>26%</b>			<b>24%</b>		

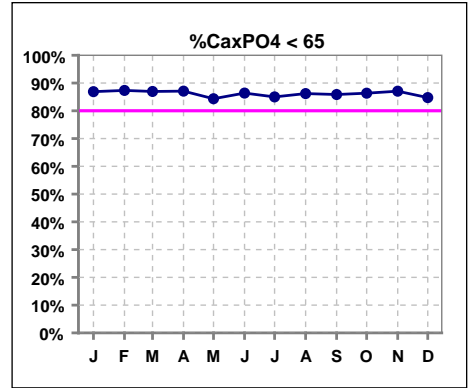


Methodology: a) All labs for 'Adequacy of Dialysis', 'Nutrition', 'Osteodystrophy', 'Anemia' and 'Diabetes' based on last value of month; b) BP's and #L processed are average of all values for month; c) Access data takes last access of month; d) Values for SGA and 'Infection Control' use most recent result.



**III. OSTEODYSTROPHY - CONT.**

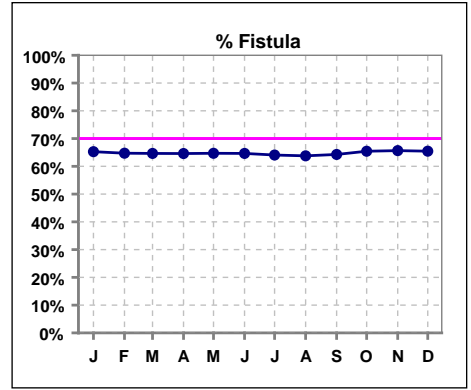
	Jan	Feb	Mar	Apr	May	Jun	Jul	Aug	Sep	Oct	Nov	Dec
# Ca x PO4	1183	1177	1189	1192	1207	1204	1214	1203	1224	1230	1245	1246
# Ca x PO4 < 65	1028	1028	1034	1038	1018	1040	1032	1037	1051	1062	1084	1056
Pop. Mean	49.7	49.2	48.9	49.4	50.7	49.2	49.9	48.5	49.9	49.3	48.6	50.0
Std. Deviation	14.6	14.7	14.9	14.9	15.8	15.0	16.0	15.1	15.5	15.5	15.2	16.0
% Ca x PO4 < 65	87%	87%	87%	87%	84%	86%	85%	86%	86%	86%	87%	85%



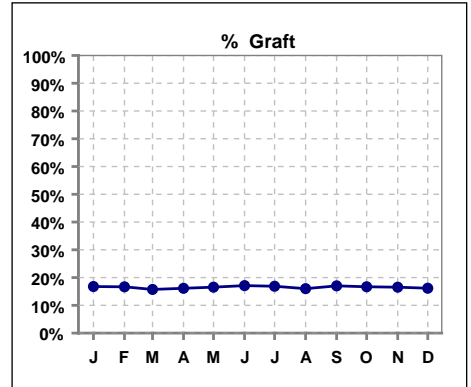
Methodology: a) All labs for 'Adequacy of Dialysis', 'Nutrition', 'Osteodystrophy', 'Anemia' and 'Diabetes' based on last value of month; b) BP's and #L processed are average of all values for month; c) Access data takes last access of month; d) Values for SGA and 'Infection Control' use most recent result.

**IV. ACCESS**

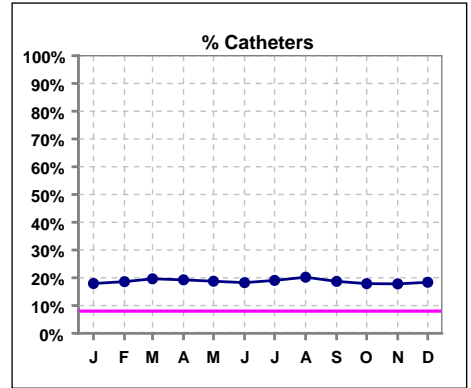
	Jan	Feb	Mar	Apr	May	Jun	Jul	Aug	Sep	Oct	Nov	Dec
<b># Access</b>	1198	1182	1202	1215	1215	1222	1233	1212	1240	1241	1252	1262
<b># Fistula</b>	782	765	777	785	786	790	790	773	797	812	822	826
<b>% Fistula</b>	65%	65%	65%	65%	65%	65%	64%	64%	64%	65%	66%	65%



	Jan	Feb	Mar	Apr	May	Jun	Jul	Aug	Sep	Oct	Nov	Dec
<b># Access</b>	1198	1182	1202	1215	1215	1222	1233	1212	1240	1241	1252	1262
<b># Graft</b>	201	197	189	196	201	209	208	194	211	207	207	204
<b>% Graft</b>	17%	17%	16%	16%	17%	17%	17%	16%	17%	17%	17%	16%



	Jan	Feb	Mar	Apr	May	Jun	Jul	Aug	Sep	Oct	Nov	Dec
<b># Access</b>	1198	1182	1202	1215	1215	1222	1233	1212	1240	1241	1252	1262
<b># Catheters</b>	215	220	236	234	228	223	235	245	232	222	223	232
<b>% Catheters</b>	18%	19%	20%	19%	19%	18%	19%	20%	19%	18%	18%	18%

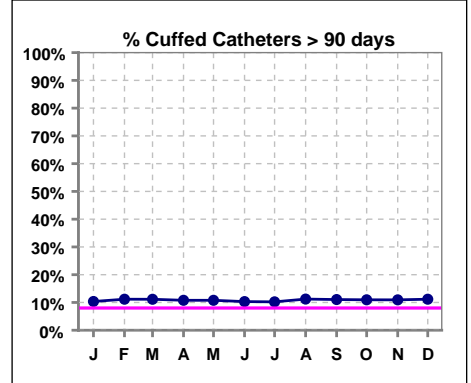


Methodology: a) All labs for 'Adequacy of Dialysis', 'Nutrition', 'Osteodystrophy', 'Anemia' and 'Diabetes' based on last value of month; b) BP's and #L processed are average of all values for month; c) Access data takes last access of month; d) Values for SGA and 'Infection Control' use most recent result.

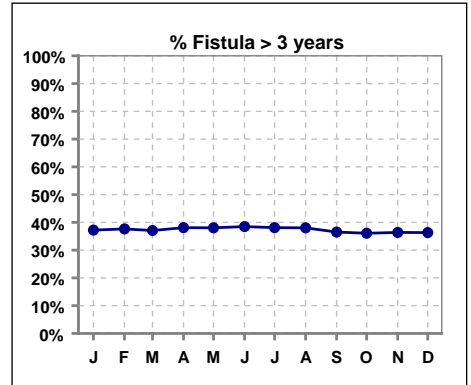
**IV. ACCESS - CONT.**

**Cuffed Catheters > 90 days**

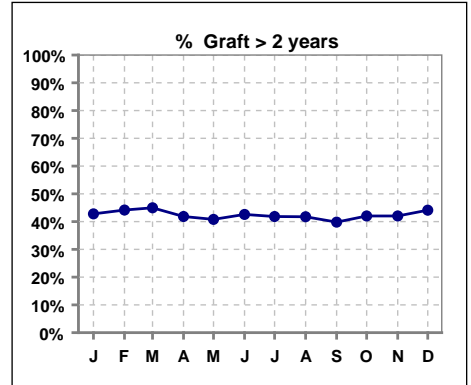
	Jan	Feb	Mar	Apr	May	Jun	Jul	Aug	Sep	Oct	Nov	Dec
<b># Access</b>	1198	1182	1202	1215	1215	1222	1233	1212	1240	1241	1252	1262
<b># Cuffed Catheters</b>	124	132	134	131	131	126	126	136	137	136	137	141
<b>% Cuffed Catheters</b>	10%	11%	11%	11%	11%	10%	10%	11%	11%	11%	11%	11%



	Jan	Feb	Mar	Apr	May	Jun	Jul	Aug	Sep	Oct	Nov	Dec
<b># Fistula</b>	782	765	777	785	786	790	790	773	797	812	822	826
<b># Fistula &gt; 3 yrs</b>	291	288	288	299	299	304	301	294	291	293	299	300
<b>% Fistula &gt; 3 yrs</b>	37%	38%	37%	38%	38%	38%	38%	38%	37%	36%	36%	36%



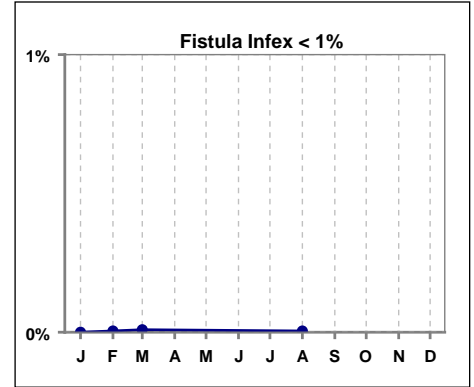
	Jan	Feb	Mar	Apr	May	Jun	Jul	Aug	Sep	Oct	Nov	Dec
<b># Graft</b>	201	197	189	196	201	209	208	194	211	207	207	204
<b># Graft &gt; 2 yrs</b>	86	87	85	82	82	89	87	81	84	87	87	90
<b>% Graft &gt; 2 yrs</b>	43%	44%	45%	42%	41%	43%	42%	42%	40%	42%	42%	44%



**IV. ACCESS - CONT.**

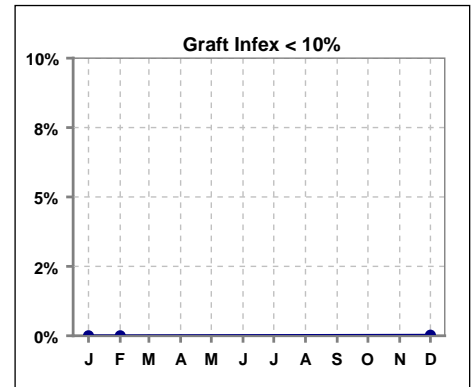
**Infection per use-life of access fistula**

	Jan	Feb	Mar	Apr	May	Jun	Jul	Aug	Sep	Oct	Nov	Dec
<b>Infex per use-life</b>	0.0045	0.0090						0.0044				



**Infection per use-life of access graft**

	Jan	Feb	Mar	Apr	May	Jun	Jul	Aug	Sep	Oct	Nov	Dec
<b>Infex per use-life</b>	0	0										0.0207



**Thrombosis Episode - access fistula**

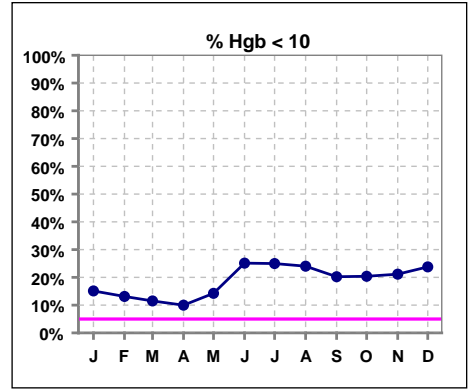
	Jan	Feb	Mar	Apr	May	Jun	Jul	Aug	Sep	Oct	Nov	Dec
<b>Current Month</b>	0.00	0.00	0.01	0.00	0.00	0.00	0.00	0.00	0.00	0.00	0.00	0.00
<b>Rolling Year-to-date</b>	0.01	0.01	0.01	0.01	0.01	0.00	0.00	0.00	0.00	0.00	0.00	0.00

**Thrombosis Episode - access graft**

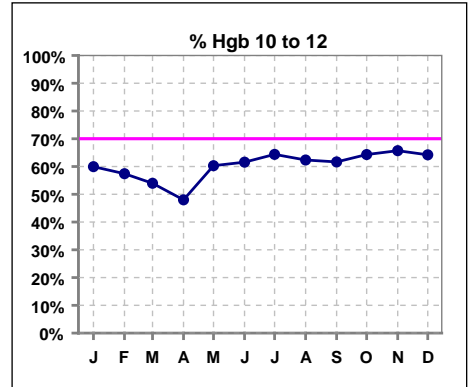
	Jan	Feb	Mar	Apr	May	Jun	Jul	Aug	Sep	Oct	Nov	Dec
<b>Current Month</b>	0.02	0.01	0.01	0.02	0.01	0.01	0.01	0.00	0.00	0.01	0.01	0.00
<b>Rolling Year-to-date</b>	0.04	0.03	0.02	0.02	0.02	0.02	0.02	0.01	0.01	0.01	0.01	0.01

**V. ANEMIA**

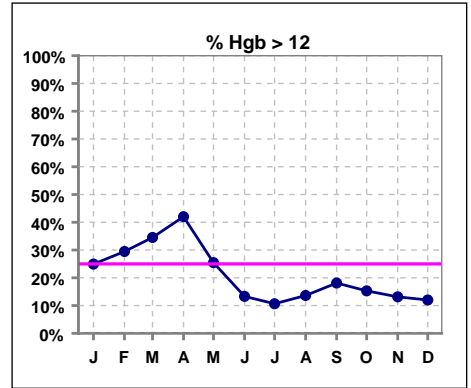
	Jan	Feb	Mar	Apr	May	Jun	Jul	Aug	Sep	Oct	Nov	Dec
# Hgb	1191	1181	1199	1202	1214	1210	1221	1211	1231	1236	1248	1249
# Hgb < 10	180	155	138	120	173	304	305	291	249	252	264	297
Pop. Mean	11.2	11.4	11.5	11.7	11.3	10.7	10.7	10.7	11.0	10.9	10.8	10.8
Std. Deviation	1.3	1.3	1.3	1.4	1.3	1.3	1.3	1.3	1.3	1.2	1.2	1.3
% Hgb < 10	15%	13%	12%	10%	14%	25%	25%	24%	20%	20%	21%	24%



	Jan	Feb	Mar	Apr	May	Jun	Jul	Aug	Sep	Oct	Nov	Dec
# Hgb	1191	1181	1199	1202	1214	1210	1221	1211	1231	1236	1248	1249
# Hgb 10 to 12	714	678	647	577	732	745	786	755	759	795	820	802
Pop. Mean	11.2	11.4	11.5	11.7	11.3	10.7	10.7	10.7	11.0	10.9	10.8	10.8
Std. Deviation	1.3	1.3	1.3	1.4	1.3	1.3	1.3	1.3	1.3	1.2	1.2	1.3
% Hgb 10 to 12	60%	57%	54%	48%	60%	62%	64%	62%	62%	64%	66%	64%

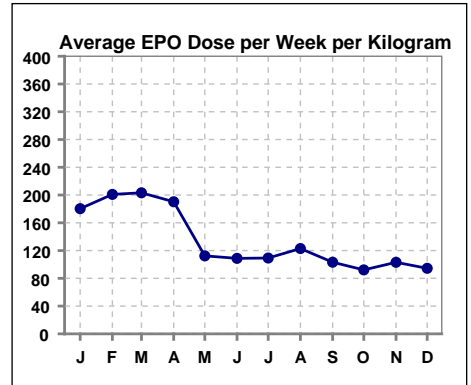


	Jan	Feb	Mar	Apr	May	Jun	Jul	Aug	Sep	Oct	Nov	Dec
# Hgb	1191	1181	1199	1202	1214	1210	1221	1211	1231	1236	1248	1249
# Hgb > 12	297	348	414	505	309	161	130	165	223	189	164	150
Pop. Mean	11.2	11.4	11.5	11.7	11.3	10.7	10.7	10.7	11.0	10.9	10.8	10.8
Std. Deviation	1.3	1.3	1.3	1.4	1.3	1.3	1.3	1.3	1.3	1.2	1.2	1.3
% Hgb > 12	25%	29%	35%	42%	25%	13%	11%	14%	18%	15%	13%	12%



**Average EPO Dose per Week per Kilogram**

	Jan	Feb	Mar	Apr	May	Jun	Jul	Aug	Sep	Oct	Nov	Dec
# Average EPO	180.4	200.9	203.3	190.3	112.4	108.8	109.3	122.9	103.2	92.2	103.1	94.4

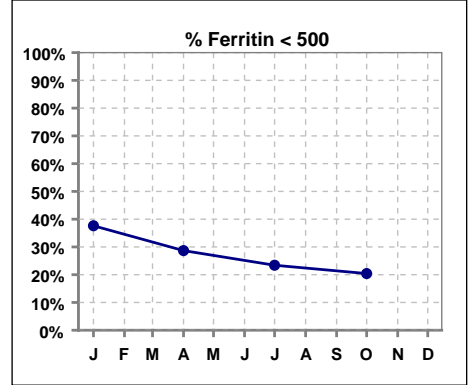


Methodology: a) All labs for 'Adequacy of Dialysis', 'Nutrition', 'Osteodystrophy', 'Anemia' and 'Diabetes' based on last value of month; b) BP's and #L processed are average of all values for month; c) Access data takes last access of month; d) Values for SGA and 'Infection Control' use most recent result.

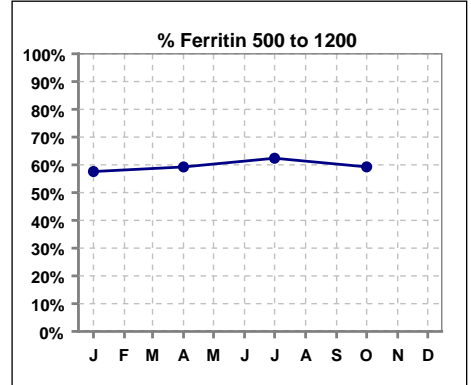
**V. ANEMIA - CONT.**

**Iron Profile**

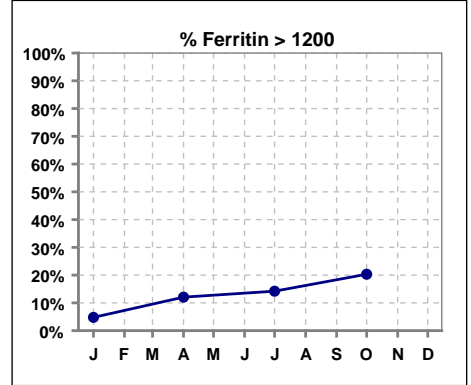
	Jan	Feb	Mar	Apr	May	Jun	Jul	Aug	Sep	Oct	Nov	Dec
# Ferritin	1172			1168			1175			1176		
# Ferritin < 500	441			335			275			240		
Pop. Mean	620			760			808			891		
Std. Deviation	333			431			438			580		
<b>% Ferritin &lt; 500</b>	<b>38%</b>			<b>29%</b>			<b>23%</b>			<b>20%</b>		



	Jan	Feb	Mar	Apr	May	Jun	Jul	Aug	Sep	Oct	Nov	Dec
# Ferritin	1172			1168			1175			1176		
# Ferritin 500 to 1200	675			692			733			697		
Pop. Mean	620			760			808			891		
Std. Deviation	333			431			438			580		
<b>% Ferritin 500 to 1200</b>	<b>58%</b>			<b>59%</b>			<b>62%</b>			<b>59%</b>		



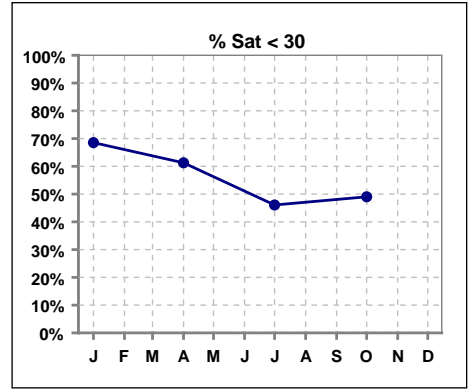
	Jan	Feb	Mar	Apr	May	Jun	Jul	Aug	Sep	Oct	Nov	Dec
# Ferritin	1172			1168			1175			1176		
# Ferritin > 1200	56			141			167			239		
Pop. Mean	620			760			808			891		
Std. Deviation	333			431			438			580		
<b>% Ferritin &gt; 1200</b>	<b>5%</b>			<b>12%</b>			<b>14%</b>			<b>20%</b>		



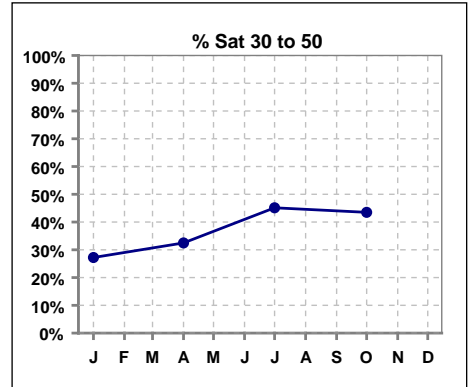
Methodology: a) All labs for 'Adequacy of Dialysis', 'Nutrition', 'Osteodystrophy', 'Anemia' and 'Diabetes' based on last value of month; b) BP's and #L processed are average of all values for month; c) Access data takes last access of month; d) Values for SGA and 'Infection Control' use most recent result.

**V. ANEMIA - CONT.**

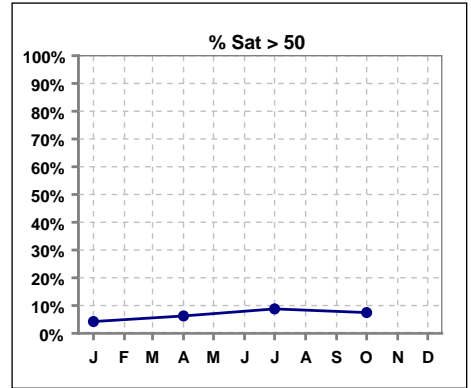
	Jan	Feb	Mar	Apr	May	Jun	Jul	Aug	Sep	Oct	Nov	Dec
# % Sat	1179			1167			1172			1177		
# % Sat < 30	808			715			540			577		
Pop. Mean	27			29			32			32		
Std. Deviation	14			14			14			15		
<b>% % Sat &lt; 30</b>	<b>69%</b>			<b>61%</b>			<b>46%</b>			<b>49%</b>		



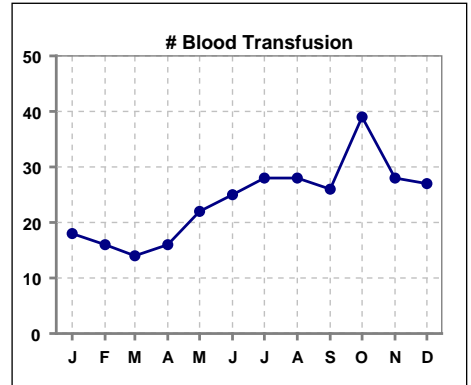
	Jan	Feb	Mar	Apr	May	Jun	Jul	Aug	Sep	Oct	Nov	Dec
# % Sat	1179			1167			1172			1177		
# % Sat 30 to 50	321			379			529			512		
Pop. Mean	27			29			32			32		
Std. Deviation	14			14			14			15		
<b>% % Sat 30 to 50</b>	<b>27%</b>			<b>32%</b>			<b>45%</b>			<b>44%</b>		



	Jan	Feb	Mar	Apr	May	Jun	Jul	Aug	Sep	Oct	Nov	Dec
# % Sat	1179			1167			1172			1177		
# % Sat > 50	50			73			103			88		
Pop. Mean	27			29			32			32		
Std. Deviation	14			14			14			15		
<b>% % Sat &gt; 50</b>	<b>4%</b>			<b>6%</b>			<b>9%</b>			<b>7%</b>		



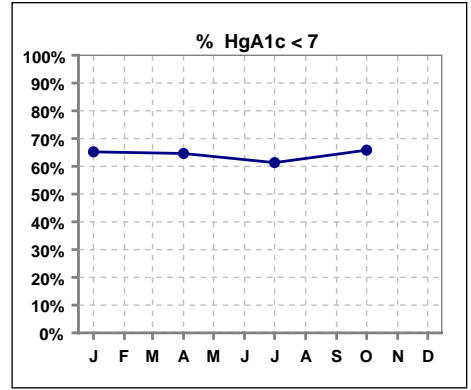
	Jan	Feb	Mar	Apr	May	Jun	Jul	Aug	Sep	Oct	Nov	Dec
<b># Blood Transfusion</b>	<b>18</b>	<b>16</b>	<b>14</b>	<b>16</b>	<b>22</b>	<b>25</b>	<b>28</b>	<b>28</b>	<b>26</b>	<b>39</b>	<b>28</b>	<b>27</b>



Methodology: a) All labs for 'Adequacy of Dialysis', 'Nutrition', 'Osteodystrophy', 'Anemia' and 'Diabetes' based on last value of month; b) BP's and #L processed are average of all values for month; c) Access data takes last access of month; d) Values for SGA and 'Infection Control' use most recent result.

**VI. Diabetes**

	Jan	Feb	Mar	Apr	May	Jun	Jul	Aug	Sep	Oct	Nov	Dec
# HgA1c	621			571			631			632		
# HgA1c < 7	405			369			387			416		
Pop. Mean	6.7			6.7			6.8			6.7		
Std. Deviation	1.49			1.44			1.51			1.42		
% HgA1c < 7	65%			65%			61%			66%		

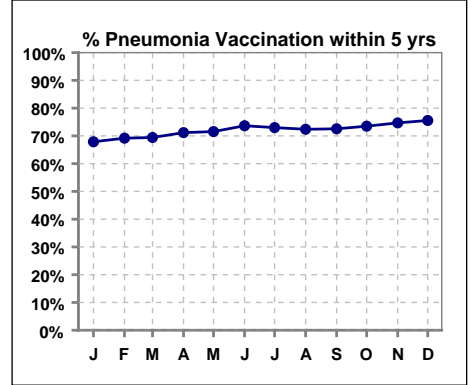




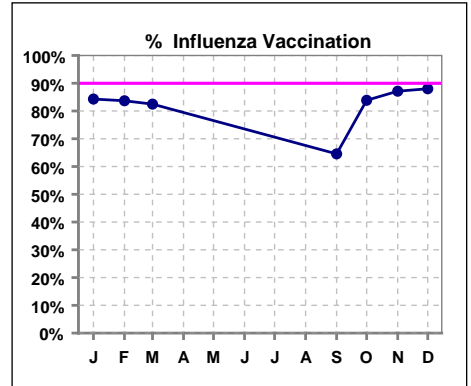
**VII. Infection Control**

**Pneumonia vaccination within the past five years**

	Jan	Feb	Mar	Apr	May	Jun	Jul	Aug	Sep	Oct	Nov	Dec
<b># Patient</b>	1186	1178	1200	1204	1223	1230	1229	1217	1239	1249	1260	1260
<b># Pneumonia</b>	805	815	833	857	875	906	897	881	899	918	941	952
<b>% Pneumonia</b>	68%	69%	69%	71%	72%	74%	73%	72%	73%	73%	75%	76%



	Jan	Feb	Mar	Apr	May	Jun	Jul	Aug	Sep	Oct	Nov	Dec
<b># Patient</b>	1179	1171	1193						1233	1239	1251	1251
<b># Influenza</b>	994	980	984						796	1039	1090	1101
<b>% Influenza</b>	84%	84%	82%						65%	84%	87%	88%



Methodology: a) All labs for 'Adequacy of Dialysis', 'Nutrition', 'Osteodystrophy', 'Anemia' and 'Diabetes' based on last value of month; b) BP's and #L processed are average of all values for month; c) Access data takes last access of month; d) Values for SGA and 'Infection Control' use most recent result.