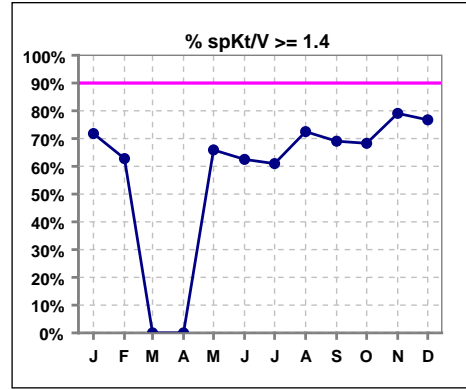
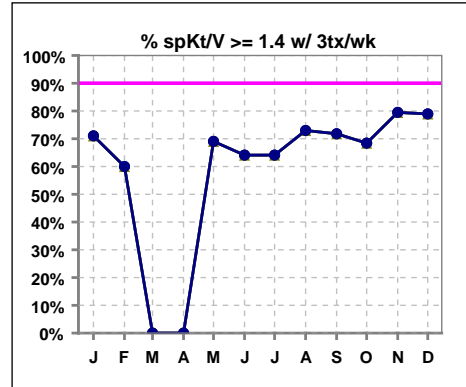


I. ADEQUACY OF DIALYSIS

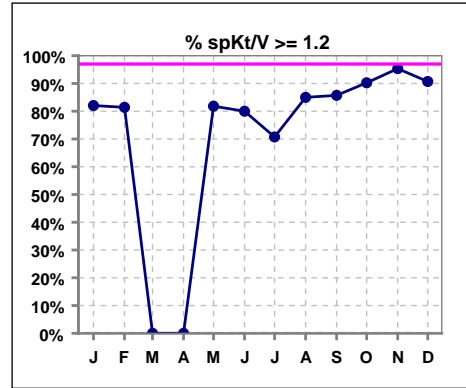
	Jan	Feb	Mar	Apr	May	Jun	Jul	Aug	Sep	Oct	Nov	Dec
# spKt/V	39	43	1	0	44	40	41	40	42	41	43	43
# spKt/V >= 1.4	28	27	0	0	29	25	25	29	29	28	34	33
Pop. Mean	1.63	1.54	1.17	0	1.49	1.57	1.43	1.54	1.58	1.54	1.59	1.61
Std. Deviation	0.58	0.57	0	0	0.37	0.70	0.41	0.39	0.39	0.31	0.31	0.33
% spKt/V >= 1.4	72%	63%	0%	0%	66%	63%	61%	73%	69%	68%	79%	77%



	Jan	Feb	Mar	Apr	May	Jun	Jul	Aug	Sep	Oct	Nov	Dec
# spKt/V w/ 3tx/wk	38	40	1	0	42	39	39	37	39	38	39	38
# spKt/V >= 1.4 w/3tx/wk	27	24	0	0	29	25	25	27	28	26	31	30
Pop. Mean	1.64	1.53	1.17	0	1.51	1.58	1.44	1.56	1.59	1.54	1.61	1.64
Std. Deviation	0.59	0.59	0	0	0.37	0.71	0.42	0.39	0.40	0.31	0.31	0.33
% >= 1.4 w/3tx/wk	71%	60%	0%	0%	69%	64%	64%	73%	72%	68%	79%	79%

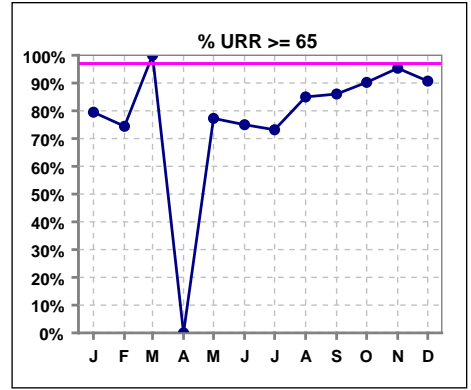


	Jan	Feb	Mar	Apr	May	Jun	Jul	Aug	Sep	Oct	Nov	Dec
# spKt/V	39	43	1	0	44	40	41	40	42	41	43	43
# spKt/V >= 1.2	32	35	0	0	36	32	29	34	36	37	41	39
Pop. Mean	1.63	1.54	1.17	0	1.49	1.57	1.43	1.54	1.58	1.54	1.59	1.61
Std. Deviation	0.58	0.57	0	0	0.37	0.70	0.41	0.39	0.39	0.31	0.31	0.33
% spKt/V >= 1.2	82%	81%	0%	0%	82%	80%	71%	85%	86%	90%	95%	91%

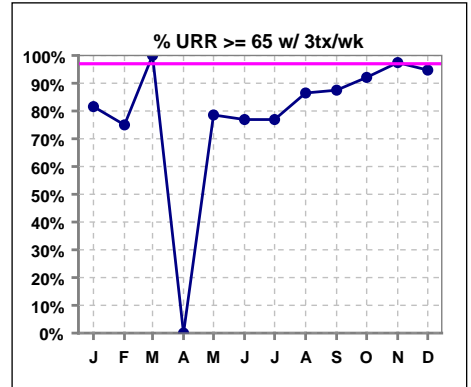


I. ADEQUACY OF DIALYSIS - CONT.

	Jan	Feb	Mar	Apr	May	Jun	Jul	Aug	Sep	Oct	Nov	Dec
# URR	39	43	1	0	44	40	41	40	43	41	43	43
# URR >= 65	31	32	1	0	34	30	30	34	37	37	41	39
Pop. Mean	73	71	67	0	71	71	69	72	73	73	74	74
Std. Deviation	8.60	9.67	0	0	9.49	10.70	13.08	9.77	8.02	7.74	6.02	7.13
% URR >= 65	79%	74%	100%	0%	77%	75%	73%	85%	86%	90%	95%	91%



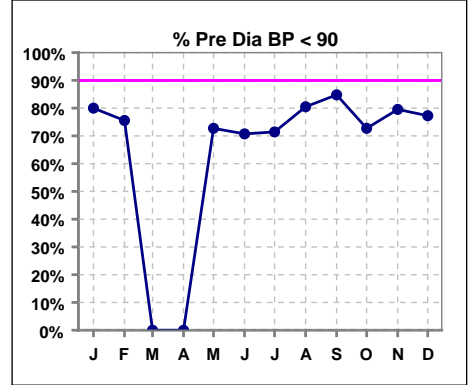
	Jan	Feb	Mar	Apr	May	Jun	Jul	Aug	Sep	Oct	Nov	Dec
# URR w/ 3tx/wk	38	40	1	0	42	39	39	37	40	38	39	38
# URR>=65 w/ 3tx/wk	31	30	1	0	33	30	30	32	35	35	38	36
Pop. Mean	73	71	67	0	71	71	69	72	73	73	74	75
Std. Deviation	8.62	9.85	0	0	9.56	10.76	13.38	9.86	8.14	7.76	5.83	7.05
% URR>=65 w/ 3tx/wk	82%	75%	100%	0%	79%	77%	77%	86%	88%	92%	97%	95%



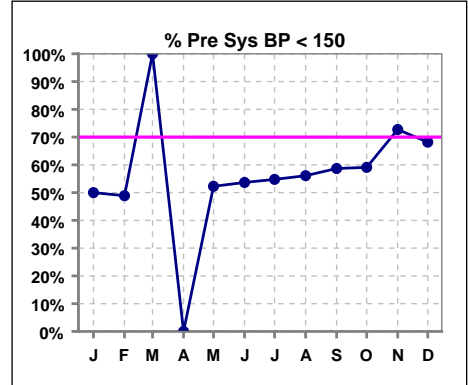
I. ADEQUACY OF DIALYSIS - CONT.

Blood Pressure Control (Pre)

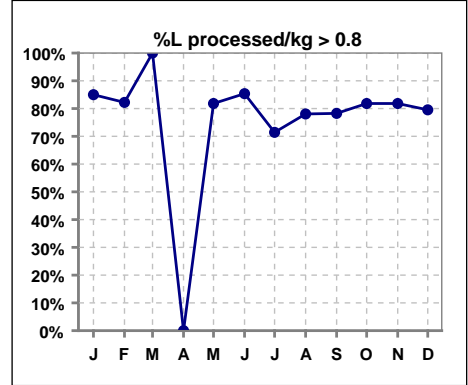
	Jan	Feb	Mar	Apr	May	Jun	Jul	Aug	Sep	Oct	Nov	Dec
# Pre Dia BP	40	45	1	0	44	41	42	41	46	44	44	44
# Pre Dia BP < 90	32	34	0	0	32	29	30	33	39	32	35	34
Pop. Mean	78	81	90	0	80	81	82	78	76	80	79	79
Std. Deviation	13.0	13.7	0	0	13.1	13.4	15.3	13.2	14.3	13.8	14.0	13.4
% Pre Dia BP < 90	80%	76%	0%	0%	73%	71%	71%	80%	85%	73%	80%	77%



	Jan	Feb	Mar	Apr	May	Jun	Jul	Aug	Sep	Oct	Nov	Dec
# Pre Sys BP	40	45	1	0	44	41	42	41	46	44	44	44
# Pre Sys BP < 150	20	22	1	0	23	22	23	23	27	26	32	30
Pop. Mean	146	149	132	0	146	146	148	145	144	149	145	145
Std. Deviation	17.9	16.9	0	0	17.3	17.7	18.7	19.0	18.4	21.7	19.0	19.3
%Pre Sys BP <150	50%	49%	100%	0%	52%	54%	55%	56%	59%	59%	73%	68%



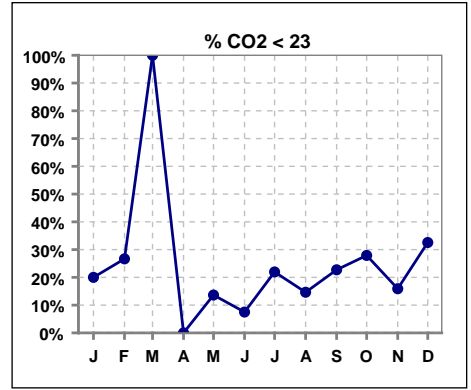
	Jan	Feb	Mar	Apr	May	Jun	Jul	Aug	Sep	Oct	Nov	Dec
# L processed/kg	40	45	1	0	44	41	42	41	46	44	44	44
# L processed/kg>0.8	34	37	1	0	36	35	30	32	36	36	36	35
Pop. Mean	1	1	1	0	1	1	1	1	1	1	1	1
Std. Deviation	0.3	0.3	0	0	0.3	0.3	0.4	0.3	0.3	0.3	0.3	0.3
% L processed/kg>0.8	85%	82%	100%	0%	82%	85%	71%	78%	78%	82%	82%	80%



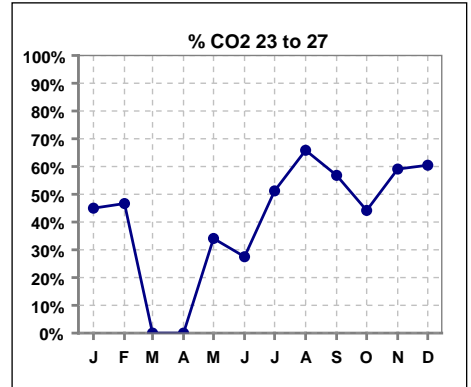
Methodology: a) All labs for 'Adequacy of Dialysis', 'Nutrition', 'Osteodystrophy', 'Anemia' and 'Diabetes' based on last value of month; b) BP's and #L processed are average of all values for month; c) Access data takes last access of month; d) Values for SGA and 'Infection Control' use most recent result.

I. ADEQUACY OF DIALYSIS - CONT.

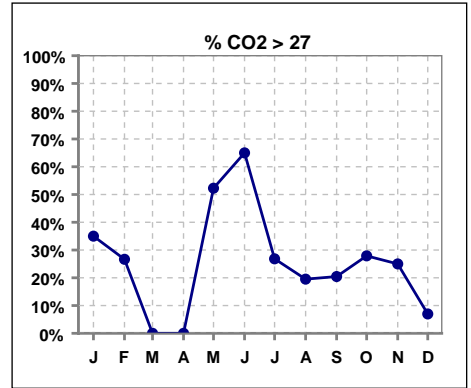
	Jan	Feb	Mar	Apr	May	Jun	Jul	Aug	Sep	Oct	Nov	Dec
# CO2	40	45	1	0	44	40	41	41	44	43	44	43
# CO2 < 23	8	12	1	0	6	3	9	6	10	12	7	14
Pop. Mean	26	25	15	0	27	28	25	25	25	25	25	23
Std. Deviation	4.00	3.82	0	0	3.41	2.94	4.05	3.49	3.22	3.74	4.13	2.99
% CO2 < 23	20%	27%	100%	0%	14%	8%	22%	15%	23%	28%	16%	33%



	Jan	Feb	Mar	Apr	May	Jun	Jul	Aug	Sep	Oct	Nov	Dec
# CO2	40	45	1	0	44	40	41	41	44	43	44	43
# CO2 23 to 27	18	21	0	0	15	11	21	27	25	19	26	26
Pop. Mean	26	25	15	0	27	28	25	25	25	25	25	23
Std. Deviation	4.00	3.82	0	0	3.41	2.94	4.05	3.49	3.22	3.74	4.13	2.99
% CO2 23 to 27	45%	47%	0%	0%	34%	28%	51%	66%	57%	44%	59%	60%



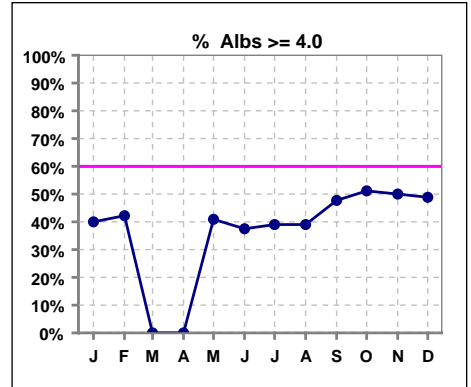
	Jan	Feb	Mar	Apr	May	Jun	Jul	Aug	Sep	Oct	Nov	Dec
# CO2	40	45	1	0	44	40	41	41	44	43	44	43
# CO2 > 27	14	12	0	0	23	26	11	8	9	12	11	3
Pop. Mean	26	25	15	0	27	28	25	25	25	25	25	23
Std. Deviation	4.00	3.82	0	0	3.41	2.94	4.05	3.49	3.22	3.74	4.13	2.99
% CO2 > 27	35%	27%	0%	0%	52%	65%	27%	20%	20%	28%	25%	7%



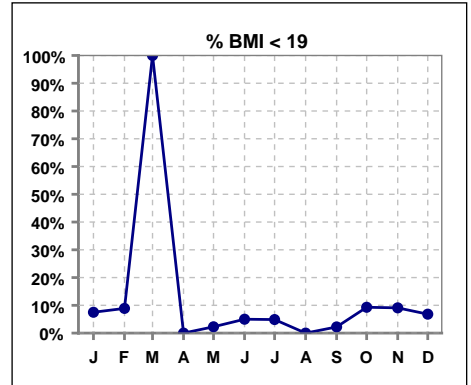
*Albumin values use BCG method - as of July 2001

II. NUTRITION

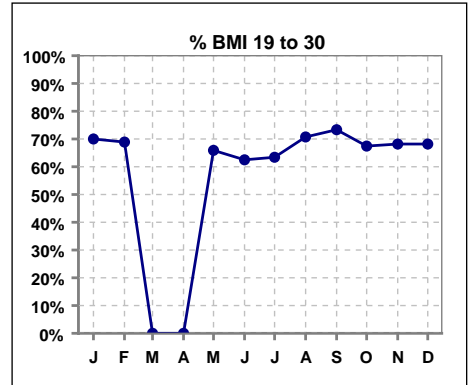
	Jan	Feb	Mar	Apr	May	Jun	Jul	Aug	Sep	Oct	Nov	Dec
# Albumin	40	45	1	0	44	40	41	41	44	43	44	43
# Albumin >= 4.0	16	19	0	0	18	15	16	16	21	22	22	21
Pop. Mean	3.8	3.8	3.0	0	3.9	3.9	3.9	3.9	3.9	3.9	3.9	3.9
Std. Deviation	0.33	0.40	0	0	0.40	0.32	0.33	0.37	0.36	0.38	0.36	0.35
% Alb >= 3.5	93%	82%	0%	0%	89%	88%	95%	90%	93%	88%	95%	91%
% Alb >= 3.0	100%	98%	100%	0%	98%	100%	98%	98%	98%	98%	98%	98%
% Alb >= 4.0	40%	42%	0%	0%	41%	38%	39%	39%	48%	51%	50%	49%



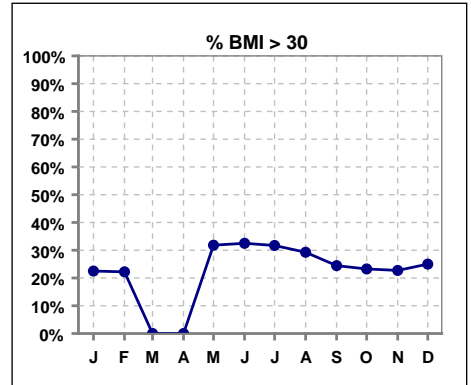
	Jan	Feb	Mar	Apr	May	Jun	Jul	Aug	Sep	Oct	Nov	Dec
# BMI	40	45	1	0	44	40	41	41	45	43	44	44
# BMI < 19	3	4	1	0	1	2	2	0	1	4	4	3
Pop. Mean	26	26	18	0	27	27	28	27	28	28	27	28
Std. Deviation	6.4	6.4	0	0	6.9	6.6	7.5	6.7	6.9	8.1	8.3	8.4
% BMI < 19	8%	9%	100%	0%	2%	5%	5%	0%	2%	9%	9%	7%



	Jan	Feb	Mar	Apr	May	Jun	Jul	Aug	Sep	Oct	Nov	Dec
# BMI	40	45	1	0	44	40	41	41	45	43	44	44
# BMI 19 to 30	28	31	0	0	29	25	26	29	33	29	30	30
Pop. Mean	26	26	18	0	27	27	28	27	28	28	27	28
Std. Deviation	6.4	6.4	0	0	6.9	6.6	7.5	6.7	6.9	8.1	8.3	8.4
% BMI 19 to 30	70%	69%	0%	0%	66%	63%	63%	71%	73%	67%	68%	68%



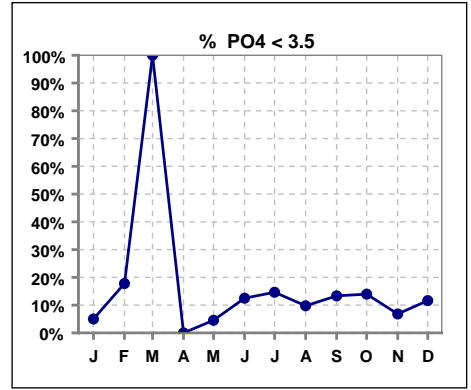
	Jan	Feb	Mar	Apr	May	Jun	Jul	Aug	Sep	Oct	Nov	Dec
# BMI	40	45	1	0	44	40	41	41	45	43	44	44
# BMI > 30	9	10	0	0	14	13	13	12	11	10	10	11
Pop. Mean	26	26	18	0	27	27	28	27	28	28	27	28
Std. Deviation	6.4	6.4	0	0	6.9	6.6	7.5	6.7	6.9	8.1	8.3	8.4
% BMI > 30	23%	22%	0%	0%	32%	33%	32%	29%	24%	23%	23%	25%



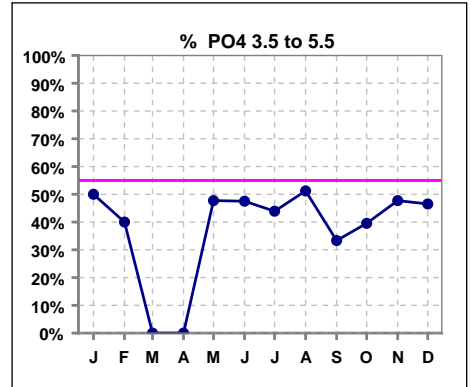
Methodology: a) All labs for 'Adequacy of Dialysis', 'Nutrition', 'Osteodystrophy', 'Anemia' and 'Diabetes' based on last value of month; b) BP's and #L processed are average of all values for month; c) Access data takes last access of month; d) Values for SGA and 'Infection Control' use most recent result.

III. OSTEODYSTROPHY

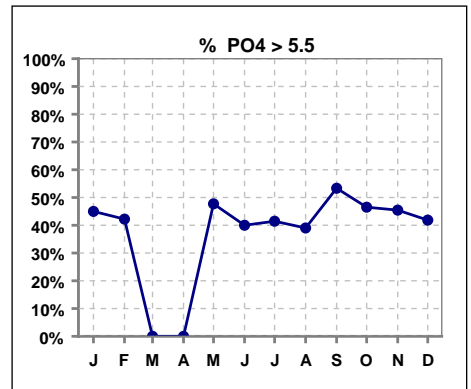
	Jan	Feb	Mar	Apr	May	Jun	Jul	Aug	Sep	Oct	Nov	Dec
# PO4	40	45	1	0	44	40	41	41	45	43	44	43
# PO4 < 3.5	2	8	1	0	2	5	6	4	6	6	3	5
Pop. Mean	5.6	5.5	2.9	0	5.9	5.3	5.6	5.5	5.7	5.3	5.5	5.3
Std. Deviation	2.01	1.96	0	0	1.86	1.83	2.22	1.82	2.21	1.87	1.53	1.60
% PO4 < 3.5	5%	18%	100%	0%	5%	13%	15%	10%	13%	14%	7%	12%



	Jan	Feb	Mar	Apr	May	Jun	Jul	Aug	Sep	Oct	Nov	Dec
# PO4	40	45	1	0	44	40	41	41	45	43	44	43
# PO4 3.5 to 5.5	20	18	0	0	21	19	18	21	15	17	21	20
Pop. Mean	5.6	5.5	2.9	0	5.9	5.3	5.6	5.5	5.7	5.3	5.5	5.3
Std. Deviation	2.01	1.96	0	0	1.86	1.83	2.22	1.82	2.21	1.87	1.53	1.60
% PO4 3.5 to 5.5	50%	40%	0%	0%	48%	48%	44%	51%	33%	40%	48%	47%



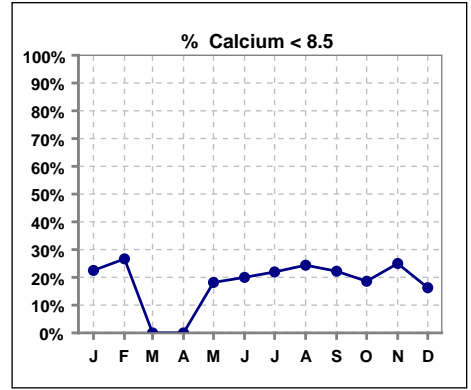
	Jan	Feb	Mar	Apr	May	Jun	Jul	Aug	Sep	Oct	Nov	Dec
# PO4	40	45	1	0	44	40	41	41	45	43	44	43
# PO4 > 5.5	18	19	0	0	21	16	17	16	24	20	20	18
Pop. Mean	5.6	5.5	2.9	0	5.9	5.3	5.6	5.5	5.7	5.3	5.5	5.3
Std. Deviation	2.01	1.96	0	0	1.86	1.83	2.22	1.82	2.21	1.87	1.53	1.60
% PO4 > 5.5	45%	42%	0%	0%	48%	40%	41%	39%	53%	47%	45%	42%



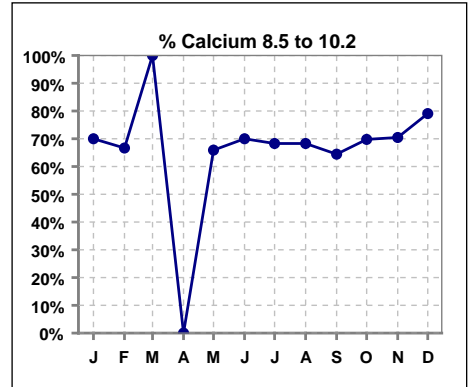
Methodology: a) All labs for 'Adequacy of Dialysis', 'Nutrition', 'Osteodystrophy', 'Anemia' and 'Diabetes' based on last value of month; b) BP's and #L processed are average of all values for month; c) Access data takes last access of month; d) Values for SGA and 'Infection Control' use most recent result.

III. OSTEODYSTROPHY - CONT.

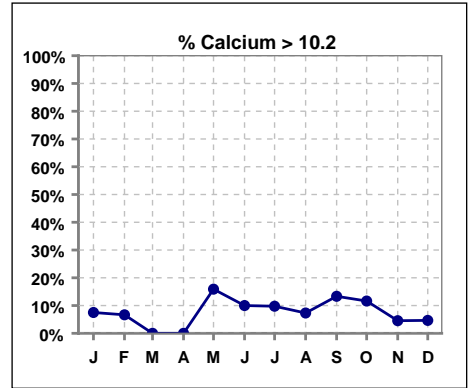
	Jan	Feb	Mar	Apr	May	Jun	Jul	Aug	Sep	Oct	Nov	Dec
# Calcium	40	45	1	0	44	40	41	41	45	43	44	43
# Calcium < 8.5	9	12	0	0	8	8	9	10	10	8	11	7
Pop. Mean	9.0	9.1	9.1	0	9.3	9.1	9.2	9.0	9.1	9.3	9.0	9.1
Std. Deviation	0.80	0.77	0	0	1.02	1.09	1.07	1.07	1.22	0.92	0.84	0.66
% Calcium < 8.5	23%	27%	0%	0%	18%	20%	22%	24%	22%	19%	25%	16%



	Jan	Feb	Mar	Apr	May	Jun	Jul	Aug	Sep	Oct	Nov	Dec
# Calcium	40	45	1	0	44	40	41	41	45	43	44	43
# Calcium 8.5 to 10.2	28	30	1	0	29	28	28	28	29	30	31	34
Pop. Mean	9.0	9.1	9.1	0	9.3	9.1	9.2	9.0	9.1	9.3	9.0	9.1
Std. Deviation	0.80	0.77	0	0	1.02	1.09	1.07	1.07	1.22	0.92	0.84	0.66
% Calcium 8.5 to 10.2	70%	67%	100%	0%	66%	70%	68%	68%	64%	70%	70%	79%

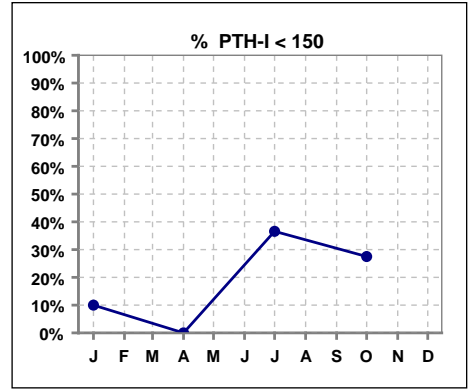


	Jan	Feb	Mar	Apr	May	Jun	Jul	Aug	Sep	Oct	Nov	Dec
# Calcium	40	45	1	0	44	40	41	41	45	43	44	43
# Calcium > 10.2	3	3	0	0	7	4	4	3	6	5	2	2
Pop. Mean	9.0	9.1	9.1	0	9.3	9.1	9.2	9.0	9.1	9.3	9.0	9.1
Std. Deviation	0.80	0.77	0	0	1.02	1.09	1.07	1.07	1.22	0.92	0.84	0.66
% Calcium > 10.2	8%	7%	0%	0%	16%	10%	10%	7%	13%	12%	5%	5%

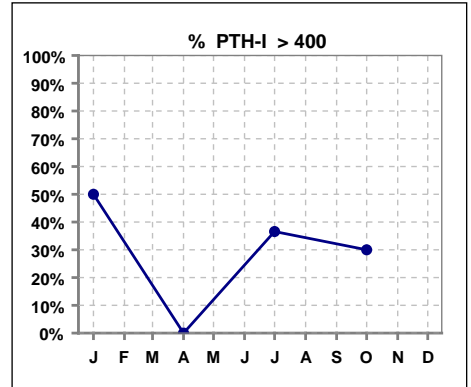


III. OSTEODYSTROPHY - CONT.

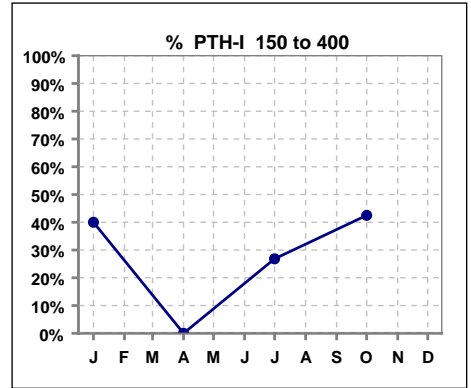
	Jan	Feb	Mar	Apr	May	Jun	Jul	Aug	Sep	Oct	Nov	Dec
# PTH-I	40			0			41			40		
# PTH-I < 150	4			0			15			11		
Pop. Mean	727			0			498			435		
Std. Deviation	701			0			751			732		
% PTH-I < 150	10%			0%			37%			28%		



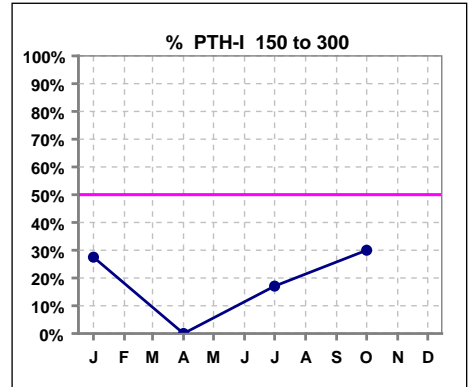
	Jan	Feb	Mar	Apr	May	Jun	Jul	Aug	Sep	Oct	Nov	Dec
# PTH-I	40			0			41			40		
# PTH-I > 400	20			0			15			12		
Pop. Mean	727			0			498			435		
Std. Deviation	701			0			751			732		
% PTH-I > 400	50%			0%			37%			30%		



	Jan	Feb	Mar	Apr	May	Jun	Jul	Aug	Sep	Oct	Nov	Dec
# PTH-I	40			0			41			40		
# PTH-I 150 to 400	16			0			11			17		
Pop. Mean	727			0			498			435		
Std. Deviation	701			0			751			732		
% PTH-I 150 to 400	40%			0%			27%			43%		



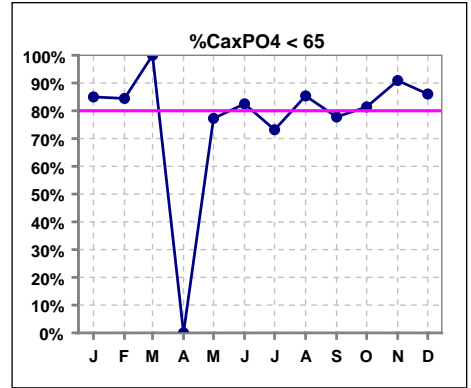
	Jan	Feb	Mar	Apr	May	Jun	Jul	Aug	Sep	Oct	Nov	Dec
# PTH-I	40			0			41			40		
# PTH-I 150 to 300	11			0			7			12		
Pop. Mean	727			0			498			435		
Std. Deviation	701			0			751			732		
% PTH-I 150 to 300	28%			0%			17%			30%		



Methodology: a) All labs for 'Adequacy of Dialysis', 'Nutrition', 'Osteodystrophy', 'Anemia' and 'Diabetes' based on last value of month; b) BP's and #L processed are average of all values for month; c) Access data takes last access of month; d) Values for SGA and 'Infection Control' use most recent result.

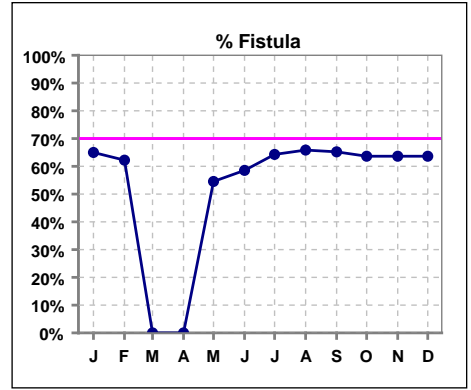
III. OSTEODYSTROPHY - CONT.

	Jan	Feb	Mar	Apr	May	Jun	Jul	Aug	Sep	Oct	Nov	Dec
# Ca x PO4	40	45	1	0	44	40	41	41	45	43	44	43
# Ca x PO4 < 65	34	38	1	0	34	33	30	35	35	35	40	37
Pop. Mean	50.7	50.2	26.4	0	54.7	47.7	49.9	49.6	50.8	49.1	49.1	48.4
Std. Deviation	17.7	18.9	0	0	19.0	18.1	16.6	17.1	18.7	16.9	11.8	14.5
% CaxPO4 < 65	85%	84%	100%	0%	77%	83%	73%	85%	78%	81%	91%	86%

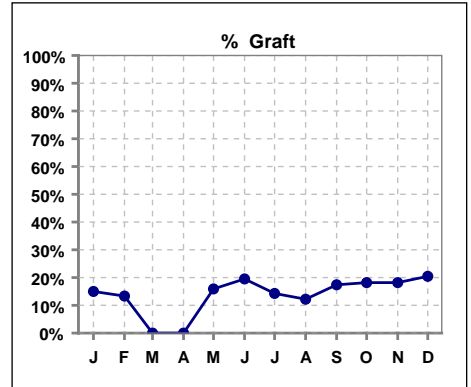


IV. ACCESS

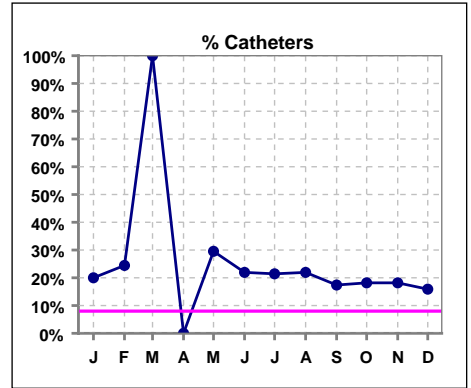
	Jan	Feb	Mar	Apr	May	Jun	Jul	Aug	Sep	Oct	Nov	Dec
# Access	40	45	1	0	44	41	42	41	46	44	44	44
# Fistula	26	28	0	0	24	24	27	27	30	28	28	28
% Fistula	65%	62%	0%	0%	55%	59%	64%	66%	65%	64%	64%	64%



	Jan	Feb	Mar	Apr	May	Jun	Jul	Aug	Sep	Oct	Nov	Dec
# Access	40	45	1	0	44	41	42	41	46	44	44	44
# Graft	6	6	0	0	7	8	6	5	8	8	8	9
% Graft	15%	13%	0%	0%	16%	20%	14%	12%	17%	18%	18%	20%



	Jan	Feb	Mar	Apr	May	Jun	Jul	Aug	Sep	Oct	Nov	Dec
# Access	40	45	1	0	44	41	42	41	46	44	44	44
# Catheters	8	11	1	0	13	9	9	9	8	8	8	7
% Catheters	20%	24%	100%	0%	30%	22%	21%	22%	17%	18%	18%	16%

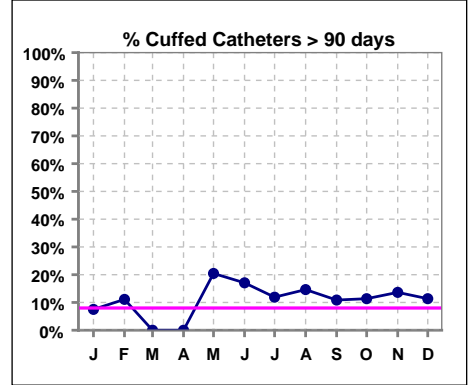


Methodology: a) All labs for 'Adequacy of Dialysis', 'Nutrition', 'Osteodystrophy', 'Anemia' and 'Diabetes' based on last value of month; b) BP's and #L processed are average of all values for month; c) Access data takes last access of month; d) Values for SGA and 'Infection Control' use most recent result.

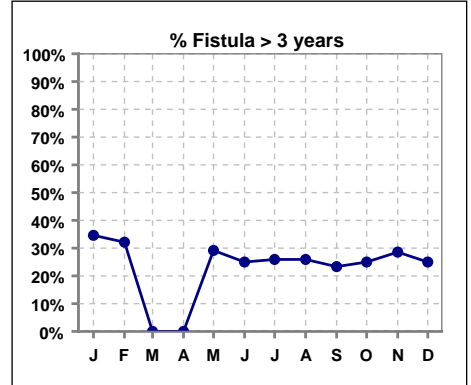
IV. ACCESS - CONT.

Cuffed Catheters > 90 days

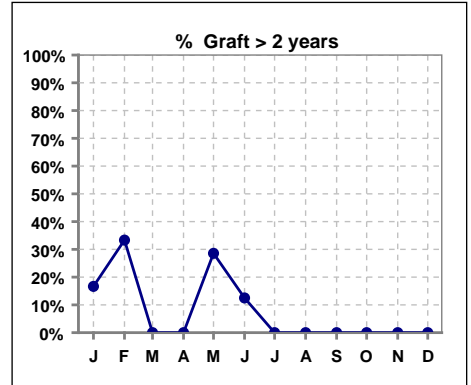
	Jan	Feb	Mar	Apr	May	Jun	Jul	Aug	Sep	Oct	Nov	Dec
# Access	40	45	1	0	44	41	42	41	46	44	44	44
# Cuffed Catheters	3	5	0	0	9	7	5	6	5	5	6	5
% Cuffed Catheters	8%	11%	0%	0%	20%	17%	12%	15%	11%	11%	14%	11%



	Jan	Feb	Mar	Apr	May	Jun	Jul	Aug	Sep	Oct	Nov	Dec
# Fistula	26	28	0	0	24	24	27	27	30	28	28	28
# Fistula > 3 yrs	9	9	0	0	7	6	7	7	7	7	8	7
% Fistula > 3 yrs	35%	32%	0%	0%	29%	25%	26%	26%	23%	25%	29%	25%



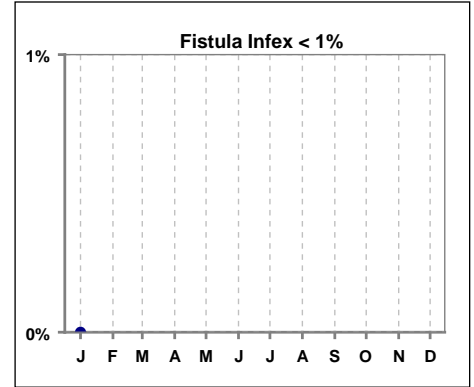
	Jan	Feb	Mar	Apr	May	Jun	Jul	Aug	Sep	Oct	Nov	Dec
# Graft	6	6	0	0	7	8	6	5	8	8	8	9
# Graft > 2 yrs	1	2	0	0	2	1	0	0	0	0	0	0
% Graft > 2 yrs	17%	33%	0%	0%	29%	13%	0%	0%	0%	0%	0%	0%



IV. ACCESS - CONT.

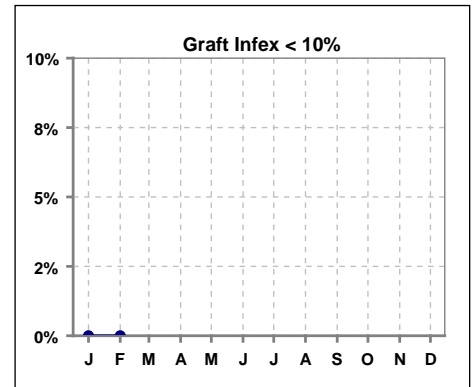
Infection per use-life of access fistula

	Jan	Feb	Mar	Apr	May	Jun	Jul	Aug	Sep	Oct	Nov	Dec
Infex per use-life	0											



Infection per use-life of access graft

	Jan	Feb	Mar	Apr	May	Jun	Jul	Aug	Sep	Oct	Nov	Dec
Infex per use-life	0	0										



Thrombosis Episode - access fistula

	Jan	Feb	Mar	Apr	May	Jun	Jul	Aug	Sep	Oct	Nov	Dec
Current Month												
Rolling Year-to-date					0.01	0.01	0.01	0.00	0.00	0.00	0.00	0.00

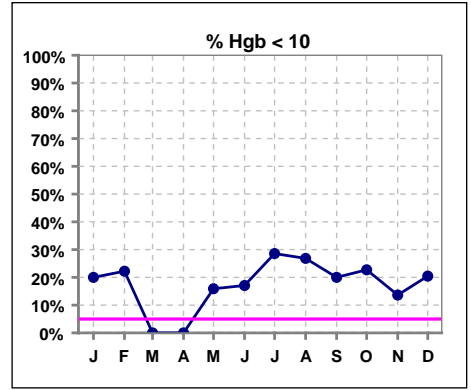
Thrombosis Episode - access graft

	Jan	Feb	Mar	Apr	May	Jun	Jul	Aug	Sep	Oct	Nov	Dec
Current Month										0.16		
Rolling Year-to-date										0.02	0.02	0.01

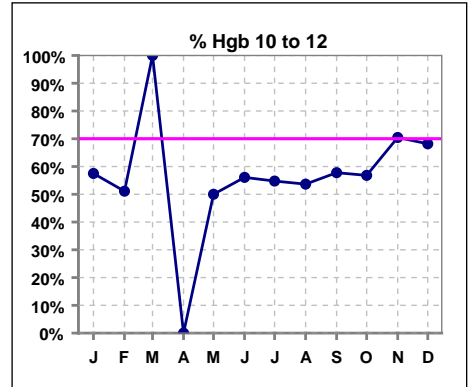
Methodology: a) All labs for 'Adequacy of Dialysis', 'Nutrition', 'Osteodystrophy', 'Anemia' and 'Diabetes' based on last value of month; b) BP's and #L processed are average of all values for month; c) Access data takes last access of month; d) Values for SGA and 'Infection Control' use most recent result.

V. ANEMIA

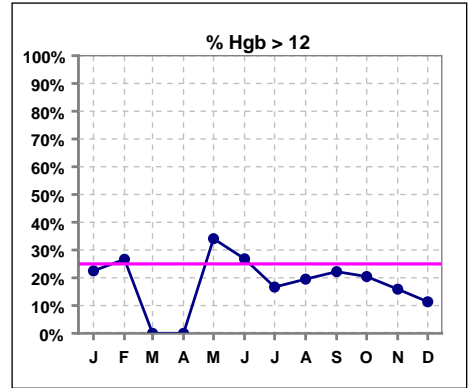
	Jan	Feb	Mar	Apr	May	Jun	Jul	Aug	Sep	Oct	Nov	Dec
# Hgb	40	45	1	0	44	41	42	41	45	44	44	44
# Hgb < 10	8	10	0	0	7	7	12	11	9	10	6	9
Pop. Mean	11.0	11.1	10.2	0	11.4	11.1	10.7	10.8	10.9	11.0	11.1	11.2
Std. Deviation	1.6	1.4	0	0	1.3	1.6	1.4	1.5	1.5	1.3	1.3	1.4
% Hgb < 10	20%	22%	0%	0%	16%	17%	29%	27%	20%	23%	14%	20%



	Jan	Feb	Mar	Apr	May	Jun	Jul	Aug	Sep	Oct	Nov	Dec
# Hgb	40	45	1	0	44	41	42	41	45	44	44	44
# Hgb 10 to 12	23	23	1	0	22	23	23	22	26	25	31	30
Pop. Mean	11.0	11.1	10.2	0	11.4	11.1	10.7	10.8	10.9	11.0	11.1	11.2
Std. Deviation	1.6	1.4	0	0	1.3	1.6	1.4	1.5	1.5	1.3	1.3	1.4
% Hgb 10 to 12	58%	51%	100%	0%	50%	56%	55%	54%	58%	57%	70%	68%

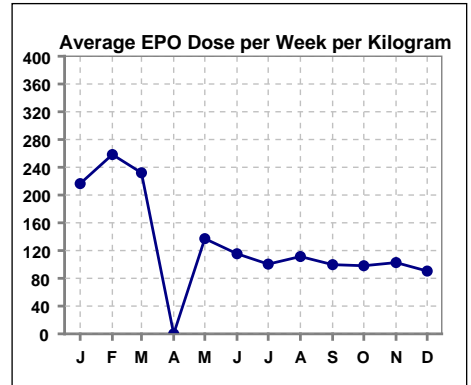


	Jan	Feb	Mar	Apr	May	Jun	Jul	Aug	Sep	Oct	Nov	Dec
# Hgb	40	45	1	0	44	41	42	41	45	44	44	44
# Hgb > 12	9	12	0	0	15	11	7	8	10	9	7	5
Pop. Mean	11.0	11.1	10.2	0	11.4	11.1	10.7	10.8	10.9	11.0	11.1	11.2
Std. Deviation	1.6	1.4	0	0	1.3	1.6	1.4	1.5	1.5	1.3	1.3	1.4
% Hgb > 12	23%	27%	0%	0%	34%	27%	17%	20%	22%	20%	16%	11%



Average EPO Dose per Week per Kilogram

	Jan	Feb	Mar	Apr	May	Jun	Jul	Aug	Sep	Oct	Nov	Dec
# Average EPO	216.5	258.3	232.1	0	137.2	115.4	100.4	111.4	99.7	98.1	102.7	90.5

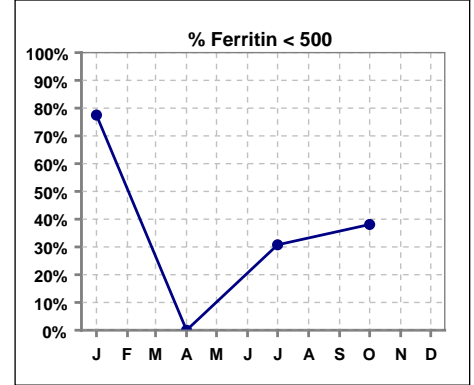


Methodology: a) All labs for 'Adequacy of Dialysis', 'Nutrition', 'Osteodystrophy', 'Anemia' and 'Diabetes' based on last value of month; b) BP's and #L processed are average of all values for month; c) Access data takes last access of month; d) Values for SGA and 'Infection Control' use most recent result.

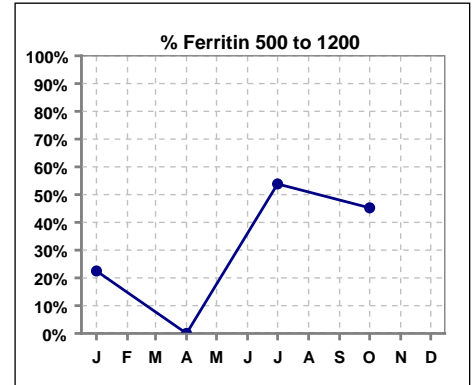
V. ANEMIA - CONT.

Iron Profile

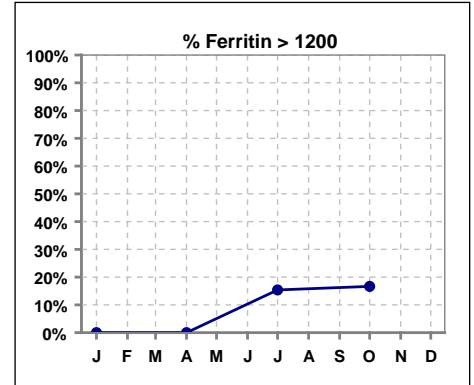
	Jan	Feb	Mar	Apr	May	Jun	Jul	Aug	Sep	Oct	Nov	Dec
# Ferritin	40			0			39			42		
# Ferritin < 500	31			0			12			16		
Pop. Mean	430			0			764			767		
Std. Deviation	215			0			395			446		
% Ferritin < 500	78%			0%			31%			38%		



	Jan	Feb	Mar	Apr	May	Jun	Jul	Aug	Sep	Oct	Nov	Dec
# Ferritin	40			0			39			42		
# Ferritin 500 to 1200	9			0			21			19		
Pop. Mean	430			0			764			767		
Std. Deviation	215			0			395			446		
% Ferritin 500 to 1200	23%			0%			54%			45%		



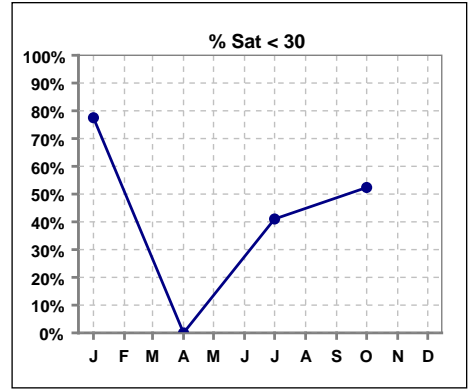
	Jan	Feb	Mar	Apr	May	Jun	Jul	Aug	Sep	Oct	Nov	Dec
# Ferritin	40			0			39			42		
# Ferritin > 1200	0			0			6			7		
Pop. Mean	430			0			764			767		
Std. Deviation	215			0			395			446		
% Ferritin > 1200	0%			0%			15%			17%		



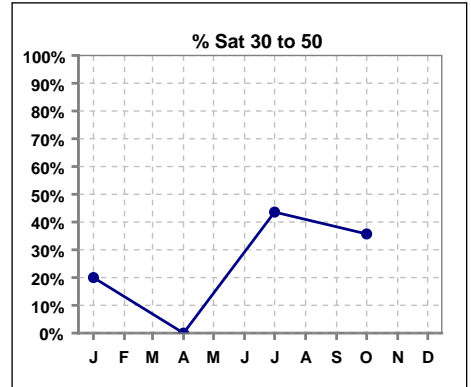
Methodology: a) All labs for 'Adequacy of Dialysis', 'Nutrition', 'Osteodystrophy', 'Anemia' and 'Diabetes' based on last value of month; b) BP's and #L processed are average of all values for month; c) Access data takes last access of month; d) Values for SGA and 'Infection Control' use most recent result.

V. ANEMIA - CONT.

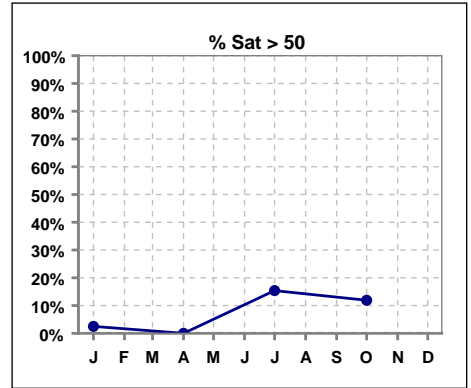
	Jan	Feb	Mar	Apr	May	Jun	Jul	Aug	Sep	Oct	Nov	Dec
# % Sat	40			0			39			42		
# % Sat < 30	31			0			16			22		
Pop. Mean	23			0			36			32		
Std. Deviation	10			0			19			15		
% % Sat < 30	78%			0%			41%			52%		



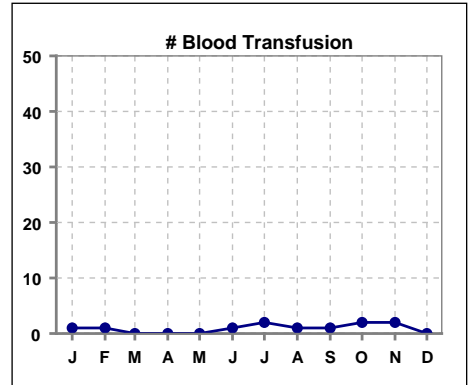
	Jan	Feb	Mar	Apr	May	Jun	Jul	Aug	Sep	Oct	Nov	Dec
# % Sat	40			0			39			42		
# % Sat 30 to 50	8			0			17			15		
Pop. Mean	23			0			36			32		
Std. Deviation	10			0			19			15		
% % Sat 30 to 50	20%			0%			44%			36%		



	Jan	Feb	Mar	Apr	May	Jun	Jul	Aug	Sep	Oct	Nov	Dec
# % Sat	40			0			39			42		
# % Sat > 50	1			0			6			5		
Pop. Mean	23			0			36			32		
Std. Deviation	10			0			19			15		
% % Sat > 50	3%			0%			15%			12%		



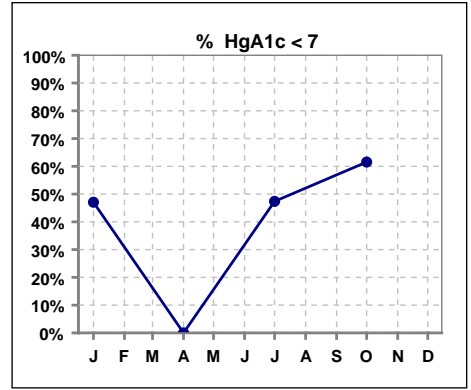
	Jan	Feb	Mar	Apr	May	Jun	Jul	Aug	Sep	Oct	Nov	Dec
# Blood Transfusion	1	1	0	0	0	1	2	1	1	2	2	0



Methodology: a) All labs for 'Adequacy of Dialysis', 'Nutrition', 'Osteodystrophy', 'Anemia' and 'Diabetes' based on last value of month; b) BP's and #L processed are average of all values for month; c) Access data takes last access of month; d) Values for SGA and 'Infection Control' use most recent result.

VI. Diabetes

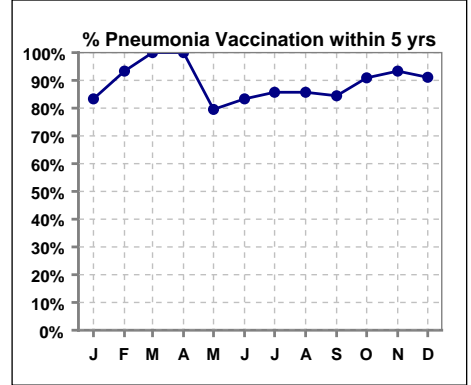
	Jan	Feb	Mar	Apr	May	Jun	Jul	Aug	Sep	Oct	Nov	Dec
# HgA1c	17			0			19			13		
# HgA1c < 7	8			0			9			8		
Pop. Mean	7.6			0			7.4			6.8		
Std. Deviation	1.87			0			1.70			2.13		
% HgA1c < 7	47%			0%			47%			62%		



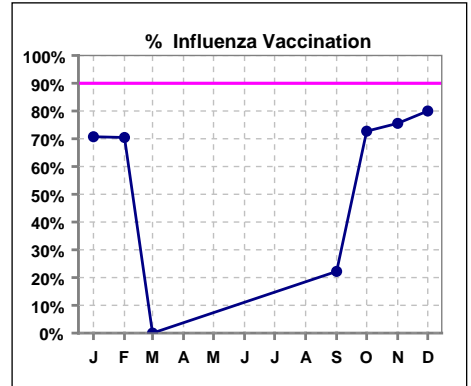
VII. Infection Control

Pneumonia vaccination within the past five years

	Jan	Feb	Mar	Apr	May	Jun	Jul	Aug	Sep	Oct	Nov	Dec
# Patient	42	45	1	1	44	42	42	42	45	44	45	45
# Pneumonia	35	42	1	1	35	35	36	36	38	40	42	41
% Pneumonia	83%	93%	100%	100%	80%	83%	86%	86%	84%	91%	93%	91%



	Jan	Feb	Mar	Apr	May	Jun	Jul	Aug	Sep	Oct	Nov	Dec
# Patient	41	44	1						45	44	45	45
# Influenza	29	31	0						10	32	34	36
% Influenza	71%	70%	0%						22%	73%	76%	80%



Methodology: a) All labs for 'Adequacy of Dialysis', 'Nutrition', 'Osteodystrophy', 'Anemia' and 'Diabetes' based on last value of month; b) BP's and #L processed are average of all values for month; c) Access data takes last access of month; d) Values for SGA and 'Infection Control' use most recent result.