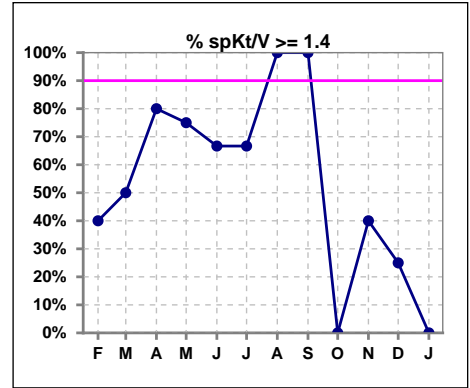
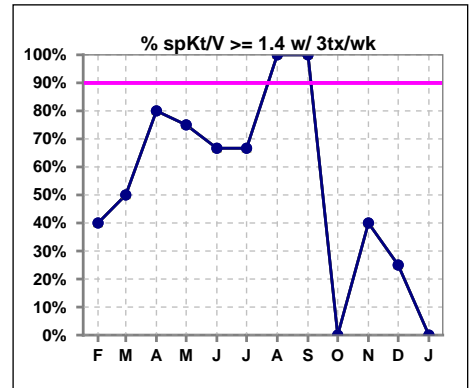


## I. ADEQUACY OF DIALYSIS

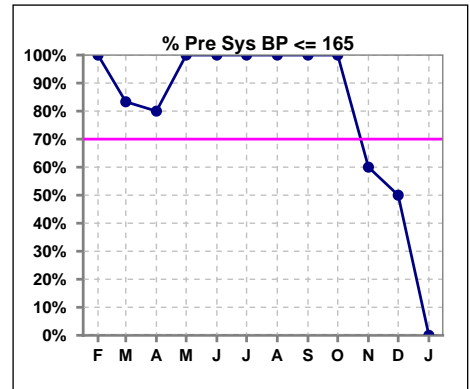
	Feb	Mar	Apr	May	Jun	Jul	Aug	Sep	Oct	Nov	Dec	Jan
# spKt/V	5	6	5	4	3	3	2	1	3	5	4	1
# spKt/V >= 1.4	2	3	4	3	2	2	2	1	0	2	1	0
Pop. Mean	1.37	1.39	1.66	1.77	1.49	1.50	1.50	2.03	1.29	1.39	1.41	1.21
Std. Deviation	0.15	0.46	0.24	0.30	0.26	0.21	0.08	0	0.05	0.16	0.24	0
% spKt/V >= 1.4	40%	50%	80%	75%	67%	67%	100%	100%	0%	40%	25%	0%
% spKt/V >= 1.2	100%	83%	100%	100%	67%	100%	100%	100%	100%	100%	100%	100%



	Feb	Mar	Apr	May	Jun	Jul	Aug	Sep	Oct	Nov	Dec	Jan
# spKt/V w/ 3tx/wk	5	6	5	4	3	3	2	1	3	5	4	1
# spKt/V >= 1.4 w/3tx/wk	2	3	4	3	2	2	2	1	0	2	1	0
Pop. Mean	1.37	1.39	1.66	1.77	1.49	1.50	1.50	2.03	1.29	1.39	1.41	1.21
Std. Deviation	0.15	0.46	0.24	0.30	0.26	0.21	0.08	0	0.05	0.16	0.24	0
% spKt/V >= 1.4 w/3tx/wk	40%	50%	80%	75%	67%	67%	100%	100%	0%	40%	25%	0%



	Feb	Mar	Apr	May	Jun	Jul	Aug	Sep	Oct	Nov	Dec	Jan
# Pre Sys BP	5	6	5	4	3	3	2	1	4	5	4	1
# Pre Sys BP <= 165	5	5	4	4	3	3	2	1	4	3	2	0
Pop. Mean	139	145	143	135	126	130	120	137	133	141	151	181
Std. Deviation	13.1	12.1	19.9	24.1	8.7	7.5	15.6	0	25.1	35.6	36.1	0
% Pre Sys BP <= 165	100%	83%	80%	100%	100%	100%	100%	100%	100%	60%	50%	0%



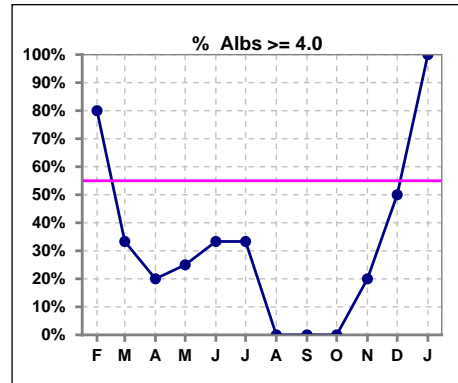
**Port Angeles Kidney Center - Center Hemodialysis**  
**Quality Assurance Reports (Patients in first 90 days of treatment)**  
 Through period ending Jan. 31, 2026

2

\*Albumin values use BCG method - as of July 2001

## II. NUTRITION

	Feb	Mar	Apr	May	Jun	Jul	Aug	Sep	Oct	Nov	Dec	Jan
# Albumin	5	6	5	4	3	3	2	1	3	5	4	1
# Albumin >= 4.0	4	2	1	1	1	1	0	0	0	1	2	1
Pop. Mean	4.1	3.6	3.6	3.7	3.9	4.0	3.9	3.9	2.7	3.4	3.7	4.4
Std. Deviation	0.13	0.48	0.43	0.60	0.35	0.23	0	0	0.21	0.67	0.90	0
% Alb >= 4.0	80%	33%	20%	25%	33%	33%	0%	0%	0%	20%	50%	100%

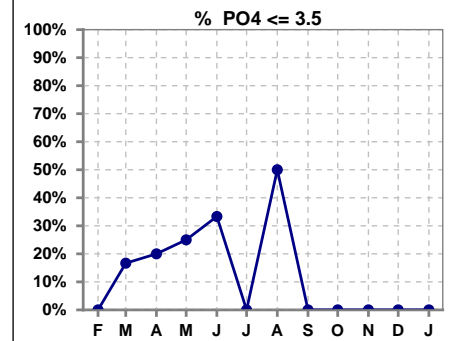


Methodology: a) All labs for 'Adequacy of Dialysis', 'Nutrition', 'Osteodystrophy', 'Anemia' and 'Diabetes' based on last value of month; b) BP's and #L processed are average of all values for month; c) Access data takes last access of month; d) Values for SGA and 'Infection Control' use most recent result.

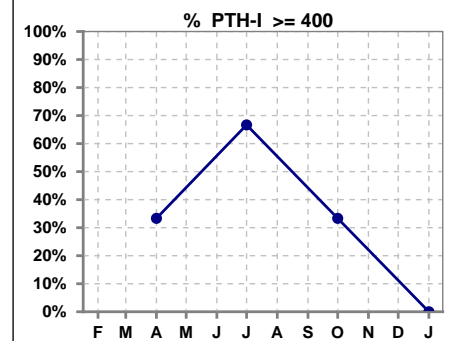
Lab methodology for PTH changed January 2012

### III. OSTEODYSTROPHY

	Feb	Mar	Apr	May	Jun	Jul	Aug	Sep	Oct	Nov	Dec	Jan
# PO4	5	6	5	4	3	3	2	1	3	5	4	1
# PO4 <= 3.5	0	1	1	1	1	0	1	0	0	0	0	0
Pop. Mean	6.7	4.9	3.9	5.1	5.0	4.6	3.4	3.6	5.2	7.1	7.7	7.5
Std. Deviation	0.80	0.97	0.84	1.37	1.50	0.83	0.35	0	1.14	1.94	1.46	0
% PO4 <= 3.5	0%	17%	20%	25%	33%	0%	50%	0%	0%	0%	0%	0%



	Feb	Mar	Apr	May	Jun	Jul	Aug	Sep	Oct	Nov	Dec	Jan
# PTH-I			3			3			3			1
# PTH-I >= 400			1			2			1			0
Pop. Mean			518			394			317			284
Std. Deviation			420			306			208			0
% PTH-I >= 400			33%			67%			33%			0%

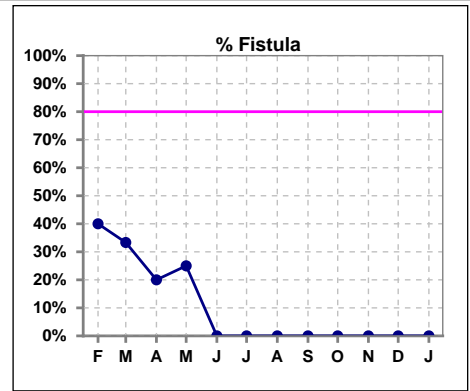


**Port Angeles Kidney Center - Center Hemodialysis**  
**Quality Assurance Reports (Patients in first 90 days of treatment)**  
 Through period ending Jan. 31, 2026

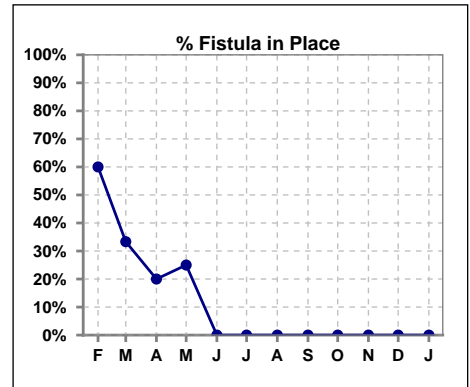
4

**IV. ACCESS**

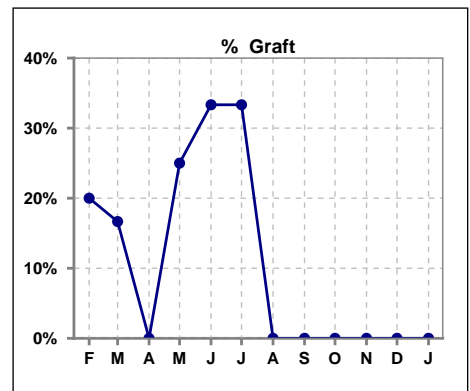
	Feb	Mar	Apr	May	Jun	Jul	Aug	Sep	Oct	Nov	Dec	Jan
# Access	5	6	5	4	3	3	2	1	4	5	4	1
# Fistula	2	2	1	1	0	0	0	0	0	0	0	0
% Fistula	40%	33%	20%	25%	0%	0%	0%	0%	0%	0%	0%	0%



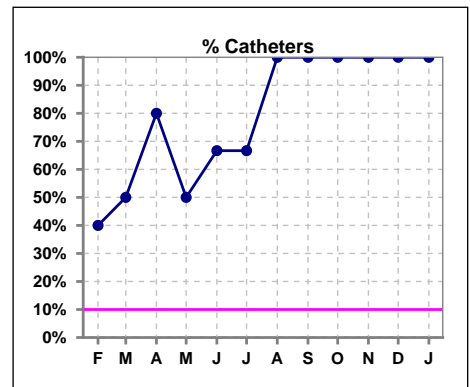
	Feb	Mar	Apr	May	Jun	Jul	Aug	Sep	Oct	Nov	Dec	Jan
# Patient	5	6	5	4	3	3	2	1	4	5	4	1
# Fistula in Place	3	2	1	1	0	0	0	0	0	0	0	0
% Fistula in Place	60%	33%	20%	25%	0%	0%	0%	0%	0%	0%	0%	0%



	Feb	Mar	Apr	May	Jun	Jul	Aug	Sep	Oct	Nov	Dec	Jan
# Access	5	6	5	4	3	3	2	1	4	5	4	1
# Graft	1	1	0	1	1	1	0	0	0	0	0	0
% Graft	20%	17%	0%	25%	33%	33%	0%	0%	0%	0%	0%	0%



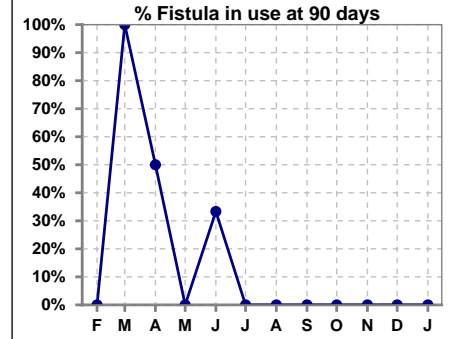
	Feb	Mar	Apr	May	Jun	Jul	Aug	Sep	Oct	Nov	Dec	Jan
# Access	5	6	5	4	3	3	2	1	4	5	4	1
# Catheters	2	3	4	2	2	2	2	1	4	5	4	1
% Catheters	40%	50%	80%	50%	67%	67%	100%	100%	100%	100%	100%	100%



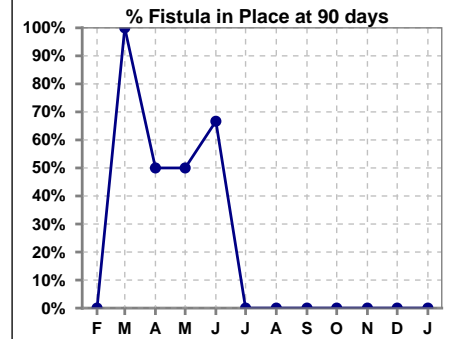
Methodology: a) All labs for 'Adequacy of Dialysis', 'Nutrition', 'Osteodystrophy', 'Anemia' and 'Diabetes' based on last value of month; b) BP's and #L processed are average of all values for month; c) Access data takes last access of month; d) Values for SGA and 'Infection Control' use most recent result.

**IV. ACCESS - CONT. Access at 90 days for those patients that reached 90 days within the month.**

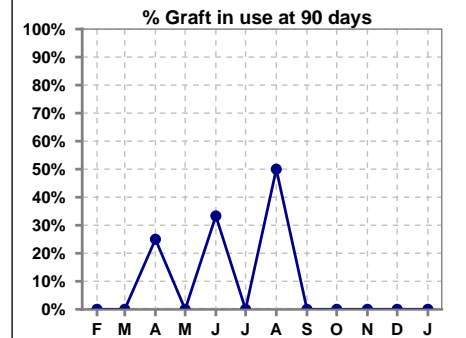
	Feb	Mar	Apr	May	Jun	Jul	Aug	Sep	Oct	Nov	Dec	Jan
# Patient	0	1	4	2	3	1	2	0	1	0	2	4
# Fistula in use	0	1	2	0	1	0	0	0	0	0	0	0
% Fistula in use	0%	100%	50%	0%	33%	0%	0%	0%	0%	0%	0%	0%



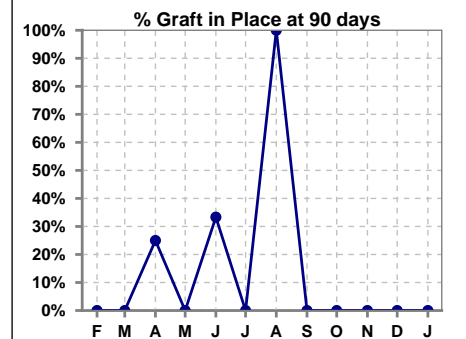
	Feb	Mar	Apr	May	Jun	Jul	Aug	Sep	Oct	Nov	Dec	Jan
# Patient	0	1	4	2	3	1	2	0	1	0	2	4
# Fistula in Place	0	1	2	1	2	0	0	0	0	0	0	0
% Fistula in Place	0%	100%	50%	50%	67%	0%	0%	0%	0%	0%	0%	0%



	Feb	Mar	Apr	May	Jun	Jul	Aug	Sep	Oct	Nov	Dec	Jan
# Patient	0	1	4	2	3	1	2	0	1	0	2	4
# Graft in use	0	0	1	0	1	0	1	0	0	0	0	0
% Graft in use	0%	0%	25%	0%	33%	0%	50%	0%	0%	0%	0%	0%

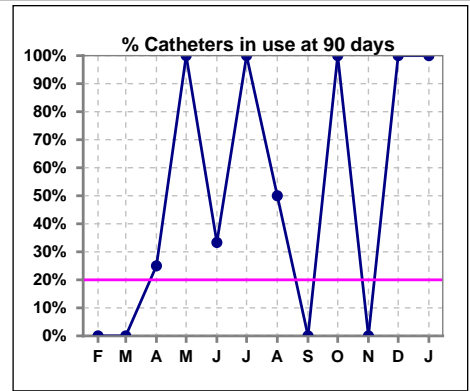


	Feb	Mar	Apr	May	Jun	Jul	Aug	Sep	Oct	Nov	Dec	Jan
# Patient	0	1	4	2	3	1	2	0	1	0	2	4
# Graft in Place	0	0	1	0	1	0	2	0	0	0	0	0
% Graft in Place	0%	0%	25%	0%	33%	0%	100%	0%	0%	0%	0%	0%

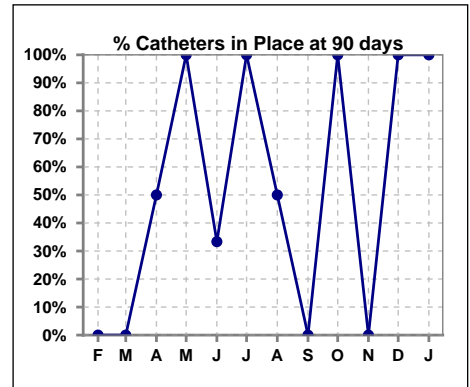


**IV. ACCESS - CONT. Access at 90 days for those patients that reached 90 days within the month.**

	Feb	Mar	Apr	May	Jun	Jul	Aug	Sep	Oct	Nov	Dec	Jan
# Patient	0	1	4	2	3	1	2	0	1	0	2	4
# Catheters in use	0	0	1	2	1	1	1	0	1	0	2	4
% Catheters in use	0%	0%	25%	100%	33%	100%	50%	0%	100%	0%	100%	100%

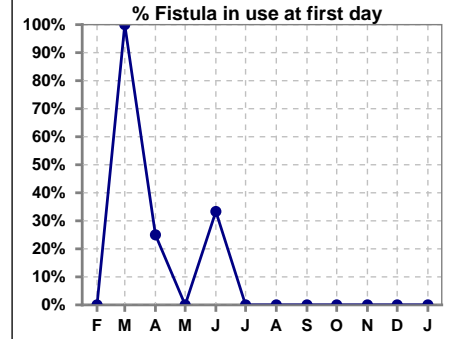


	Feb	Mar	Apr	May	Jun	Jul	Aug	Sep	Oct	Nov	Dec	Jan
# Patient	0	1	4	2	3	1	2	0	1	0	2	4
# Catheters in Place	0	0	2	2	1	1	1	0	1	0	2	4
% Catheters in Place	0%	0%	50%	100%	33%	100%	50%	0%	100%	0%	100%	100%

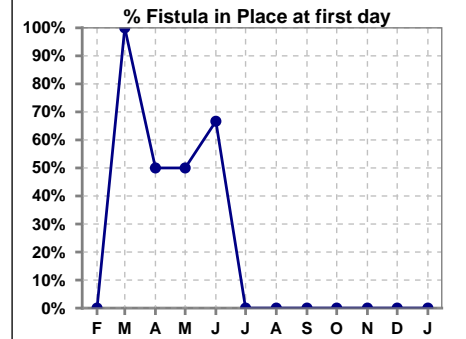


**IV. ACCESS - CONT. Access at first day for those patients that reached 90 days within the month.**

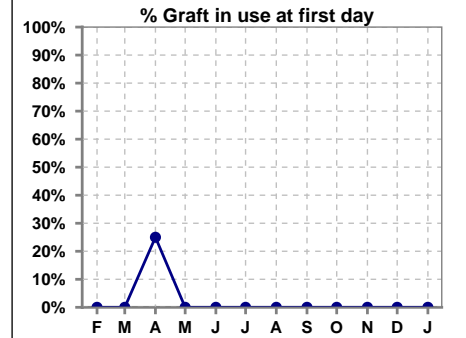
	Feb	Mar	Apr	May	Jun	Jul	Aug	Sep	Oct	Nov	Dec	Jan
# Patient	0	1	4	2	3	1	2	0	1	0	2	4
# Fistula in use	0	1	1	0	1	0	0	0	0	0	0	0
% Fistula in use	0%	100%	25%	0%	33%	0%	0%	0%	0%	0%	0%	0%



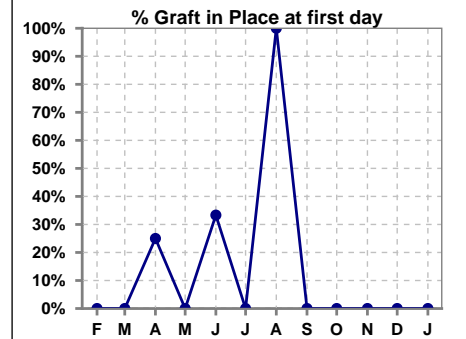
	Feb	Mar	Apr	May	Jun	Jul	Aug	Sep	Oct	Nov	Dec	Jan
# Patient	0	1	4	2	3	1	2	0	1	0	2	4
# Fistula in Place	0	1	2	1	2	0	0	0	0	0	0	0
% Fistula in Place	0%	100%	50%	50%	67%	0%	0%	0%	0%	0%	0%	0%



	Feb	Mar	Apr	May	Jun	Jul	Aug	Sep	Oct	Nov	Dec	Jan
# Patient	0	1	4	2	3	1	2	0	1	0	2	4
# Graft in use	0	0	1	0	0	0	0	0	0	0	0	0
% Graft in use	0%	0%	25%	0%	0%	0%	0%	0%	0%	0%	0%	0%

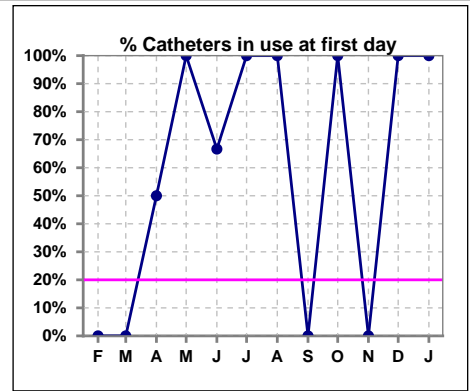


	Feb	Mar	Apr	May	Jun	Jul	Aug	Sep	Oct	Nov	Dec	Jan
# Patient	0	1	4	2	3	1	2	0	1	0	2	4
# Graft in Place	0	0	1	0	1	0	2	0	0	0	0	0
% Graft in Place	0%	0%	25%	0%	33%	0%	100%	0%	0%	0%	0%	0%

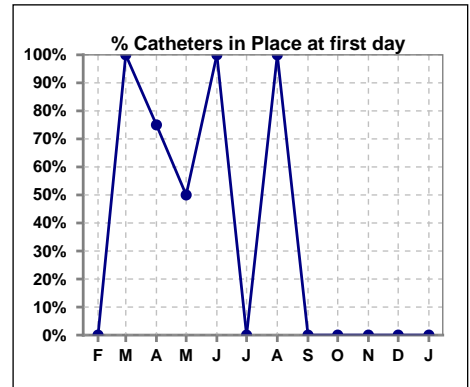


**IV. ACCESS - CONT. Access at first day for those patients that reached 90 days within the month.**

	Feb	Mar	Apr	May	Jun	Jul	Aug	Sep	Oct	Nov	Dec	Jan
# Patient	0	1	4	2	3	1	2	0	1	0	2	4
# Catheters in use	0	0	2	2	2	1	2	0	1	0	2	4
% Catheters in use	0%	0%	50%	100%	67%	100%	100%	0%	100%	0%	100%	100%



	Feb	Mar	Apr	May	Jun	Jul	Aug	Sep	Oct	Nov	Dec	Jan
# Patient	0	1	4	2	3	1	2	0	1	0	2	4
# Catheters in Place	0	1	3	1	3	0	2	0	0	0	0	0
% Catheters in Place	0%	100%	75%	50%	100%	0%	100%	0%	0%	0%	0%	0%





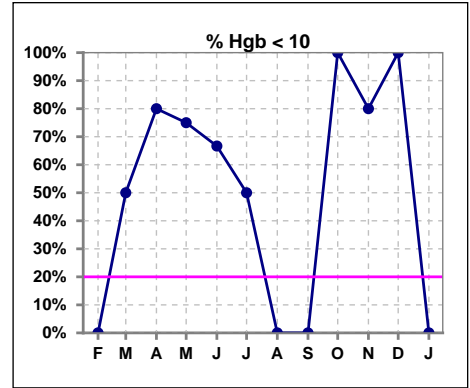
**Port Angeles Kidney Center - Center Hemodialysis**  
**Quality Assurance Reports (Patients in first 90 days of treatment)**  
 Through period ending Jan. 31, 2026

9

**V. ANEMIA**

	Feb	Mar	Apr	May	Jun	Jul	Aug	Sep	Oct	Nov	Dec	Jan
# Hgb	5	4	5	4	3	2	1	1	3	5	4	1
# Hgb <= 10	0	2	4	3	2	1	0	0	3	4	4	0
Pop. Mean	10.6	9.7	8.7	9.7	10.6	9.9	11.1	10.5	7.9	9.3	9.2	11.8
Std. Deviation	0.4	1.6	1.4	1.4	1.9	0.4	0	0	1.4	1.6	0.9	0
% Hgb <= 10	0%	50%	80%	75%	67%	50%	0%	0%	100%	80%	100%	0%

Note: Excludes patients who received no ESA in month.



	Feb	Mar	Apr	May	Jun	Jul	Aug	Sep	Oct	Nov	Dec	Jan
# Hgb	5	4	5	4	3	2	1	1	3	5	4	1
# Hgb >= 12	0	0	0	0	1	0	0	0	0	0	0	0
Pop. Mean	10.6	9.7	8.7	9.7	10.6	9.9	11.1	10.5	7.9	9.3	9.2	11.8
Std. Deviation	0.4	1.6	1.4	1.4	1.9	0.4	0	0	1.4	1.6	0.9	0
% Hgb >= 12	0%	0%	0%	0%	33%	0%	0%	0%	0%	0%	0%	0%

Note: Excludes patients who received no ESA in month.

