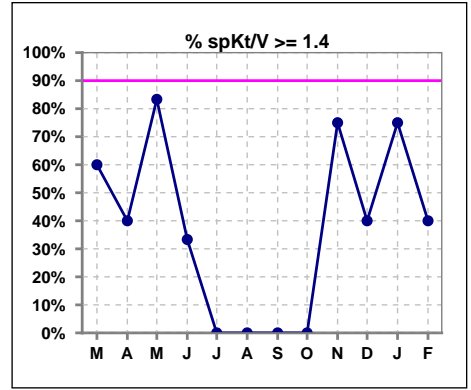
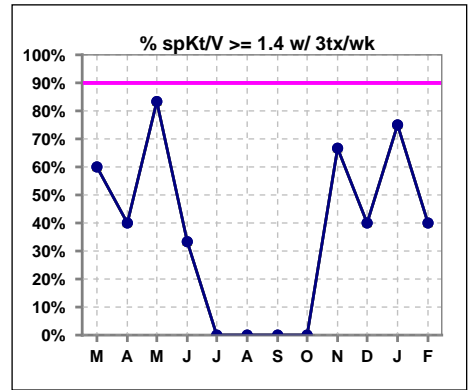


I. ADEQUACY OF DIALYSIS

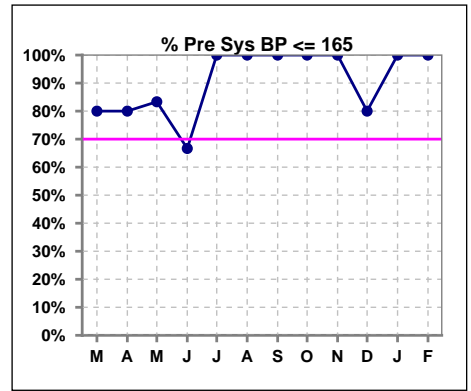
	Mar	Apr	May	Jun	Jul	Aug	Sep	Oct	Nov	Dec	Jan	Feb
# spKt/V	5	5	6	3	1	2	1	2	4	5	4	5
# spKt/V >= 1.4	3	2	5	1	0	0	0	0	3	2	3	2
Pop. Mean	1.63	1.42	1.56	1.41	1.38	1.25	1.23	1.37	1.47	1.38	1.41	1.37
Std. Deviation	0.42	0.20	0.20	0.47	0	0.05	0	0.02	0.09	0.19	0.05	0.15
% spKt/V >= 1.4	60%	40%	83%	33%	0%	0%	0%	0%	75%	40%	75%	40%
% spKt/V >= 1.2	80%	100%	100%	67%	100%	100%	100%	100%	100%	80%	100%	100%



	Mar	Apr	May	Jun	Jul	Aug	Sep	Oct	Nov	Dec	Jan	Feb
# spKt/V w/ 3tx/wk	5	5	6	3	1	2	1	2	3	5	4	5
# spKt/V >= 1.4 w/3tx/wk	3	2	5	1	0	0	0	0	2	2	3	2
Pop. Mean	1.63	1.42	1.56	1.41	1.38	1.25	1.23	1.37	1.46	1.38	1.41	1.37
Std. Deviation	0.42	0.20	0.20	0.47	0	0.05	0	0.02	0.12	0.19	0.05	0.15
% spKt/V >= 1.4 w/3tx/wk	60%	40%	83%	33%	0%	0%	0%	0%	67%	40%	75%	40%



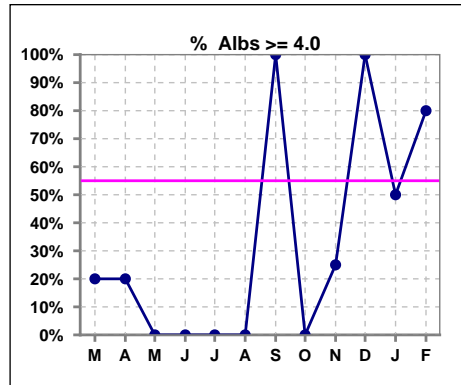
	Mar	Apr	May	Jun	Jul	Aug	Sep	Oct	Nov	Dec	Jan	Feb
# Pre Sys BP	5	5	6	3	1	2	1	2	4	5	5	5
# Pre Sys BP <= 165	4	4	5	3	1	2	1	2	4	4	5	5
Pop. Mean	149	147	149	134	114	124	155	154	131	139	145	139
Std. Deviation	17.0	14.4	16.5	27.2	0	1.4	0	7.8	23.6	18.6	5.8	13.1
% Pre Sys BP <= 165	80%	80%	83%	67%	100%	100%	100%	100%	100%	80%	100%	100%



*Albumin values use BCG method - as of July 2001

II. NUTRITION

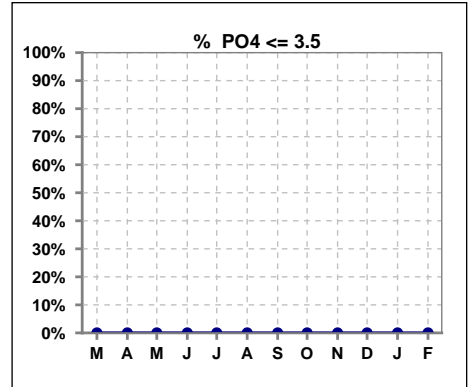
	Mar	Apr	May	Jun	Jul	Aug	Sep	Oct	Nov	Dec	Jan	Feb
# Albumin	5	5	6	3	1	2	1	2	4	5	4	5
# Albumin >= 4.0	1	1	0	0	0	0	1	0	1	5	2	4
Pop. Mean	3.8	3.7	3.7	3.5	3.7	3.8	4.1	3.5	3.8	4.1	3.8	4.1
Std. Deviation	0.29	0.28	0.18	0.25	0	0.07	0	0	0.29	0.21	0.33	0.13
% Alb >= 4.0	20%	20%	0%	0%	0%	0%	100%	0%	25%	100%	50%	80%



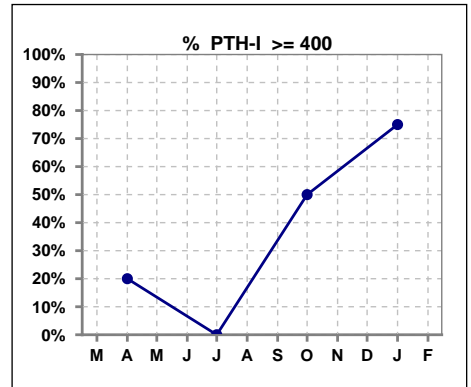
Lab methodology for PTH changed January 2012

III. OSTEODYSTROPHY

	Mar	Apr	May	Jun	Jul	Aug	Sep	Oct	Nov	Dec	Jan	Feb
# PO4	5	5	6	3	1	2	1	2	4	5	4	5
# PO4 <= 3.5	0	0	0	0	0	0	0	0	0	0	0	0
Pop. Mean	6.2	5.6	5.4	6.6	3.8	6.5	7.5	6.9	5.5	5.4	6.7	6.7
Std. Deviation	1.93	1.70	1.27	0.87	0	1.34	0	2.97	1.43	0.94	0.96	0.80
% PO4 <= 3.5	0%	0%	0%	0%	0%	0%	0%	0%	0%	0%	0%	0%



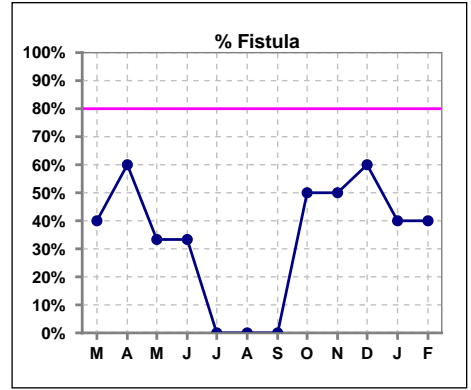
	Mar	Apr	May	Jun	Jul	Aug	Sep	Oct	Nov	Dec	Jan	Feb
# PTH-I		5			1			2			4	
# PTH-I >= 400		1			0			1			3	
Pop. Mean		402			291			246			726	
Std. Deviation		317			0			226			550	
% PTH-I >= 400		20%			0%			50%			75%	



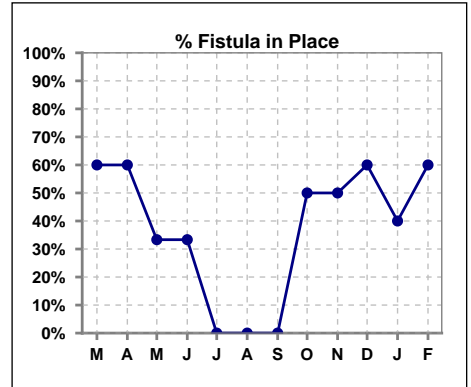
Methodology: a) All labs for 'Adequacy of Dialysis', 'Nutrition', 'Osteodystrophy', 'Anemia' and 'Diabetes' based on last value of month; b) BP's and #L processed are average of all values for month; c) Access data takes last access of month; d) Values for SGA and 'Infection Control' use most recent result.

IV. ACCESS

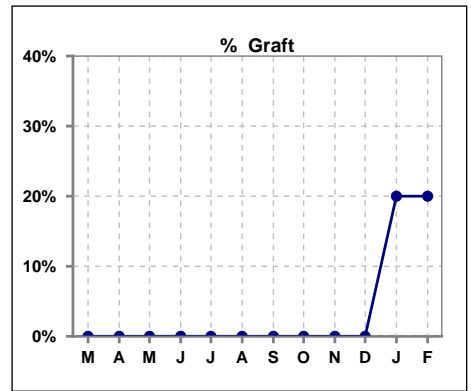
	Mar	Apr	May	Jun	Jul	Aug	Sep	Oct	Nov	Dec	Jan	Feb
# Access	5	5	6	3	1	2	1	2	4	5	5	5
# Fistula	2	3	2	1	0	0	0	1	2	3	2	2
% Fistula	40%	60%	33%	33%	0%	0%	0%	50%	50%	60%	40%	40%



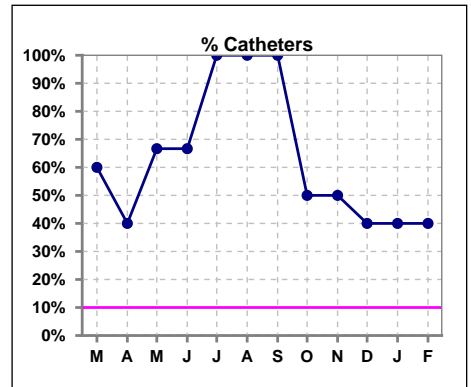
	Mar	Apr	May	Jun	Jul	Aug	Sep	Oct	Nov	Dec	Jan	Feb
# Patient	5	5	6	3	1	2	1	2	4	5	5	5
# Fistula in Place	3	3	2	1	0	0	0	1	2	3	2	3
% Fistula in Place	60%	60%	33%	33%	0%	0%	0%	50%	50%	60%	40%	60%



	Mar	Apr	May	Jun	Jul	Aug	Sep	Oct	Nov	Dec	Jan	Feb
# Access	5	5	6	3	1	2	1	2	4	5	5	5
# Graft	0	0	0	0	0	0	0	0	0	0	1	1
% Graft	0%	0%	0%	0%	0%	0%	0%	0%	0%	0%	20%	20%



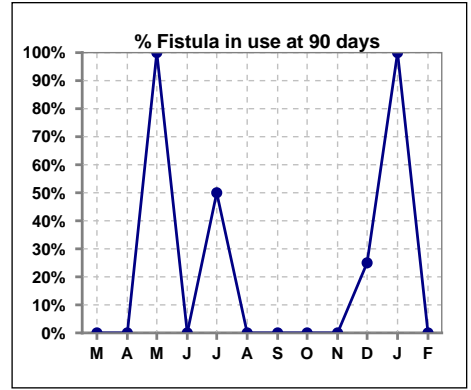
	Mar	Apr	May	Jun	Jul	Aug	Sep	Oct	Nov	Dec	Jan	Feb
# Access	5	5	6	3	1	2	1	2	4	5	5	5
# Catheters	3	2	4	2	1	2	1	1	2	2	2	2
% Catheters	60%	40%	67%	67%	100%	100%	100%	50%	50%	40%	40%	40%



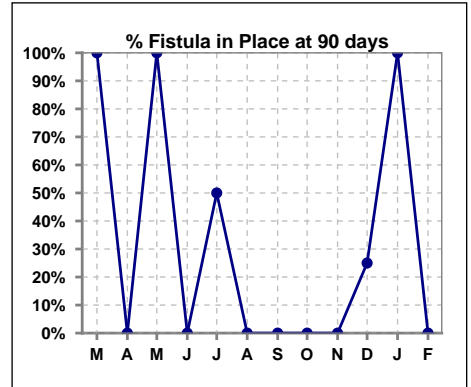
Methodology: a) All labs for 'Adequacy of Dialysis', 'Nutrition', 'Osteodystrophy', 'Anemia' and 'Diabetes' based on last value of month; b) BP's and #L processed are average of all values for month; c) Access data takes last access of month; d) Values for SGA and 'Infection Control' use most recent result.

IV. ACCESS - CONT. Access at 90 days for those patients that reached 90 days within the month.

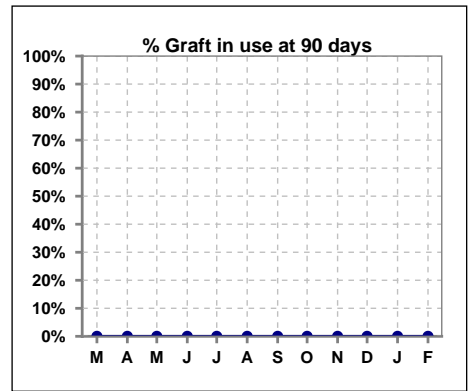
	Mar	Apr	May	Jun	Jul	Aug	Sep	Oct	Nov	Dec	Jan	Feb
# Patient	1	1	1	2	2	1	0	1	0	4	2	0
# Fistula in use	0	0	1	0	1	0	0	0	0	1	2	0
% Fistula in use	0%	0%	100%	0%	50%	0%	0%	0%	0%	25%	100%	0%



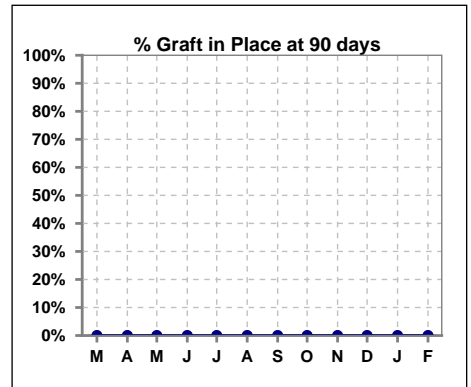
	Mar	Apr	May	Jun	Jul	Aug	Sep	Oct	Nov	Dec	Jan	Feb
# Patient	1	1	1	2	2	1	0	1	0	4	2	0
# Fistula in Place	1	0	1	0	1	0	0	0	0	1	2	0
% Fistula in Place	100%	0%	100%	0%	50%	0%	0%	0%	0%	25%	100%	0%



	Mar	Apr	May	Jun	Jul	Aug	Sep	Oct	Nov	Dec	Jan	Feb
# Patient	1	1	1	2	2	1	0	1	0	4	2	0
# Graft in use	0	0	0	0	0	0	0	0	0	0	0	0
% Graft in use	0%	0%	0%	0%	0%	0%	0%	0%	0%	0%	0%	0%



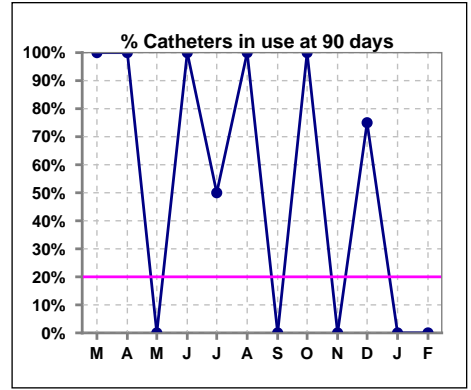
	Mar	Apr	May	Jun	Jul	Aug	Sep	Oct	Nov	Dec	Jan	Feb
# Patient	1	1	1	2	2	1	0	1	0	4	2	0
# Graft in Place	0	0	0	0	0	0	0	0	0	0	0	0
% Graft in Place	0%	0%	0%	0%	0%	0%	0%	0%	0%	0%	0%	0%



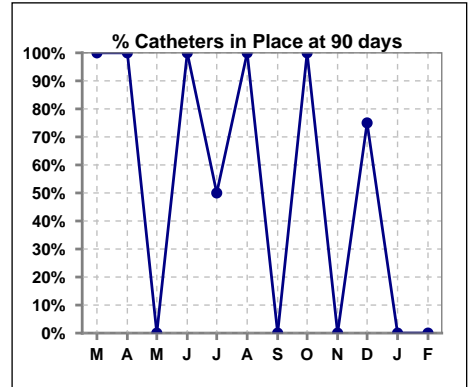
Methodology: a) All labs for 'Adequacy of Dialysis', 'Nutrition', 'Osteodystrophy', 'Anemia' and 'Diabetes' based on last value of month; b) BP's and #L processed are average of all values for month; c) Access data takes last access of month; d) Values for SGA and 'Infection Control' use most recent result.

IV. ACCESS - CONT. Access at 90 days for those patients that reached 90 days within the month.

	Mar	Apr	May	Jun	Jul	Aug	Sep	Oct	Nov	Dec	Jan	Feb
# Patient	1	1	1	2	2	1	0	1	0	4	2	0
# Catheters in use	1	1	0	2	1	1	0	1	0	3	0	0
% Catheters in use	100%	100%	0%	100%	50%	100%	0%	100%	0%	75%	0%	0%



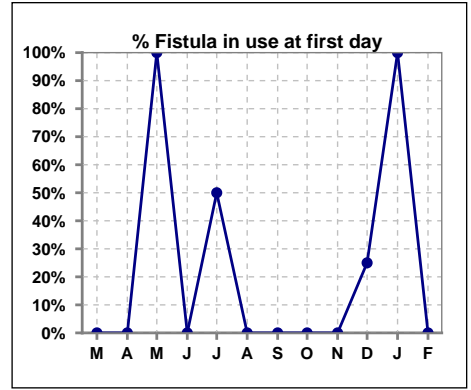
	Mar	Apr	May	Jun	Jul	Aug	Sep	Oct	Nov	Dec	Jan	Feb
# Patient	1	1	1	2	2	1	0	1	0	4	2	0
# Catheters in Place	1	1	0	2	1	1	0	1	0	3	0	0
% Catheters in Place	100%	100%	0%	100%	50%	100%	0%	100%	0%	75%	0%	0%



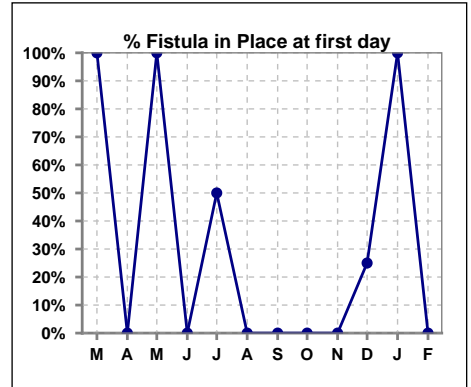
Methodology: a) All labs for 'Adequacy of Dialysis', 'Nutrition', 'Osteodystrophy', 'Anemia' and 'Diabetes' based on last value of month; b) BP's and #L processed are average of all values for month; c) Access data takes last access of month; d) Values for SGA and 'Infection Control' use most recent result.

IV. ACCESS - CONT. Access at first day for those patients that reached 90 days within the month.

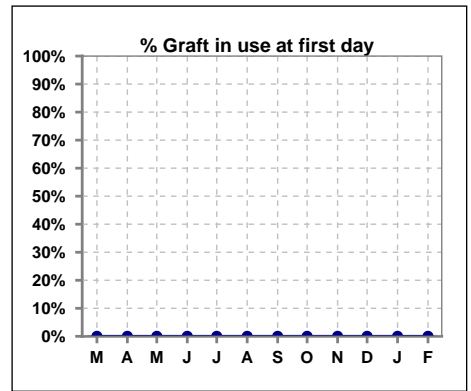
	Mar	Apr	May	Jun	Jul	Aug	Sep	Oct	Nov	Dec	Jan	Feb
# Patient	1	1	1	2	2	1	0	1	0	4	2	0
# Fistula in use	0	0	1	0	1	0	0	0	0	1	2	0
% Fistula in use	0%	0%	100%	0%	50%	0%	0%	0%	0%	25%	100%	0%



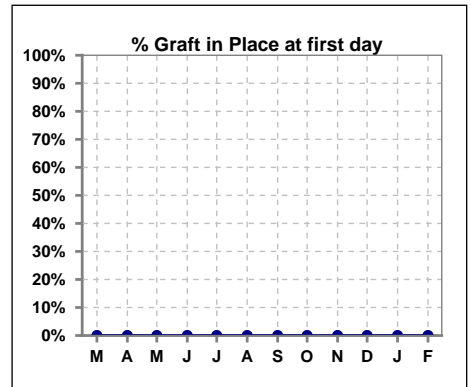
	Mar	Apr	May	Jun	Jul	Aug	Sep	Oct	Nov	Dec	Jan	Feb
# Patient	1	1	1	2	2	1	0	1	0	4	2	0
# Fistula in Place	1	0	1	0	1	0	0	0	0	1	2	0
% Fistula in Place	100%	0%	100%	0%	50%	0%	0%	0%	0%	25%	100%	0%



	Mar	Apr	May	Jun	Jul	Aug	Sep	Oct	Nov	Dec	Jan	Feb
# Patient	1	1	1	2	2	1	0	1	0	4	2	0
# Graft in use	0	0	0	0	0	0	0	0	0	0	0	0
% Graft in use	0%	0%	0%	0%	0%	0%	0%	0%	0%	0%	0%	0%



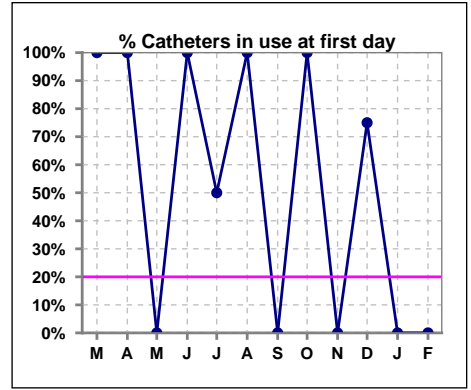
	Mar	Apr	May	Jun	Jul	Aug	Sep	Oct	Nov	Dec	Jan	Feb
# Patient	1	1	1	2	2	1	0	1	0	4	2	0
# Graft in Place	0	0	0	0	0	0	0	0	0	0	0	0
% Graft in Place	0%	0%	0%	0%	0%	0%	0%	0%	0%	0%	0%	0%



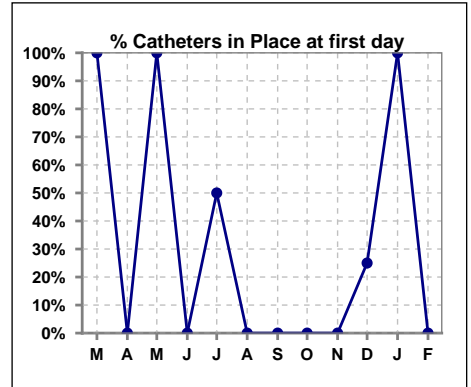
Methodology: a) All labs for 'Adequacy of Dialysis', 'Nutrition', 'Osteodystrophy', 'Anemia' and 'Diabetes' based on last value of month; b) BP's and #L processed are average of all values for month; c) Access data takes last access of month; d) Values for SGA and 'Infection Control' use most recent result.

IV. ACCESS - CONT. Access at first day for those patients that reached 90 days within the month.

	Mar	Apr	May	Jun	Jul	Aug	Sep	Oct	Nov	Dec	Jan	Feb
# Patient	1	1	1	2	2	1	0	1	0	4	2	0
# Catheters in use	1	1	0	2	1	1	0	1	0	3	0	0
% Catheters in use	100%	100%	0%	100%	50%	100%	0%	100%	0%	75%	0%	0%



	Mar	Apr	May	Jun	Jul	Aug	Sep	Oct	Nov	Dec	Jan	Feb
# Patient	1	1	1	2	2	1	0	1	0	4	2	0
# Catheters in Place	1	0	1	0	1	0	0	0	0	1	2	0
% Catheters in Place	100%	0%	100%	0%	50%	0%	0%	0%	0%	25%	100%	0%

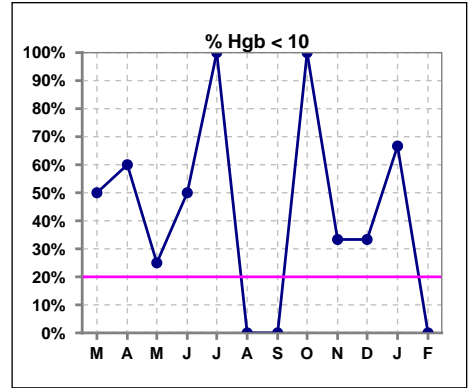


Methodology: a) All labs for 'Adequacy of Dialysis', 'Nutrition', 'Osteodystrophy', 'Anemia' and 'Diabetes' based on last value of month; b) BP's and #L processed are average of all values for month; c) Access data takes last access of month; d) Values for SGA and 'Infection Control' use most recent result.

V. ANEMIA

	Mar	Apr	May	Jun	Jul	Aug	Sep	Oct	Nov	Dec	Jan	Feb
# Hgb	4	5	4	2	1	2	1	2	3	3	3	5
# Hgb <= 10	2	3	1	1	1	0	0	2	1	1	2	0
Pop. Mean	9.6	9.6	10.4	9.4	10.0	12.2	10.5	8.6	9.9	10.6	9.4	10.6
Std. Deviation	0.9	1.1	0.6	1.8	0	2.5	0	1.4	1.5	1.3	0.7	0.4
% Hgb <= 10	50%	60%	25%	50%	100%	0%	0%	100%	33%	33%	67%	0%

Note: Excludes patients who received no ESA in month.



	Mar	Apr	May	Jun	Jul	Aug	Sep	Oct	Nov	Dec	Jan	Feb
# Hgb	4	5	4	2	1	2	1	2	3	3	3	5
# Hgb >= 12	0	0	0	0	0	1	0	0	0	0	0	0
Pop. Mean	9.6	9.6	10.4	9.4	10.0	12.2	10.5	8.6	9.9	10.6	9.4	10.6
Std. Deviation	0.9	1.1	0.6	1.8	0	2.5	0	1.4	1.5	1.3	0.7	0.4
% Hgb >= 12	0%	0%	0%	0%	0%	50%	0%	0%	0%	0%	0%	0%

Note: Excludes patients who received no ESA in month.

