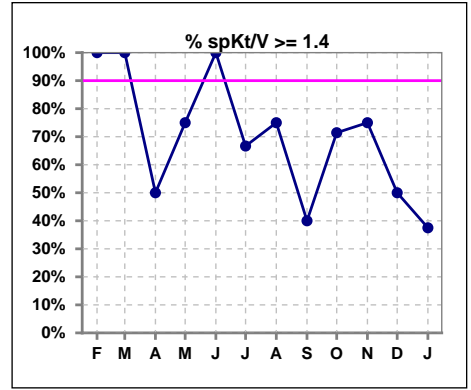
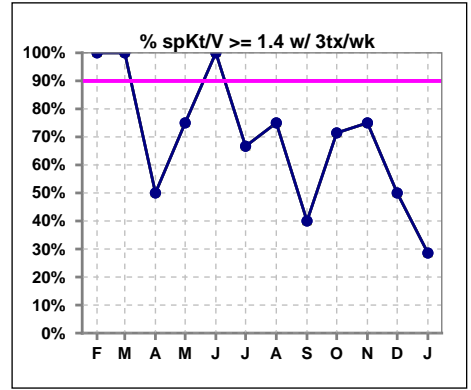


I. ADEQUACY OF DIALYSIS

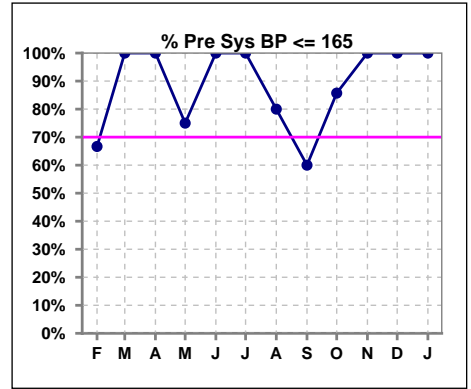
	Feb	Mar	Apr	May	Jun	Jul	Aug	Sep	Oct	Nov	Dec	Jan
# spKt/V	3	2	4	4	4	3	4	5	7	4	4	8
# spKt/V >= 1.4	3	2	2	3	4	2	3	2	5	3	2	3
Pop. Mean	1.59	1.78	1.40	1.54	1.73	1.55	1.40	1.30	1.46	1.49	1.48	1.52
Std. Deviation	0.25	0.21	0.29	0.13	0.27	0.31	0.24	0.18	0.16	0.21	0.20	0.47
% spKt/V >= 1.4	100%	100%	50%	75%	100%	67%	75%	40%	71%	75%	50%	38%
% spKt/V >= 1.2	100%	100%	75%	100%	100%	100%	75%	80%	100%	100%	100%	100%



	Feb	Mar	Apr	May	Jun	Jul	Aug	Sep	Oct	Nov	Dec	Jan
# spKt/V w/ 3tx/wk	3	2	4	4	4	3	4	5	7	4	4	7
# spKt/V >= 1.4 w/3tx/wk	3	2	2	3	4	2	3	2	5	3	2	2
Pop. Mean	1.59	1.78	1.40	1.54	1.73	1.55	1.40	1.30	1.46	1.49	1.48	1.53
Std. Deviation	0.25	0.21	0.29	0.13	0.27	0.31	0.24	0.18	0.16	0.21	0.20	0.51
% spKt/V >= 1.4 w/3tx/wk	100%	100%	50%	75%	100%	67%	75%	40%	71%	75%	50%	29%



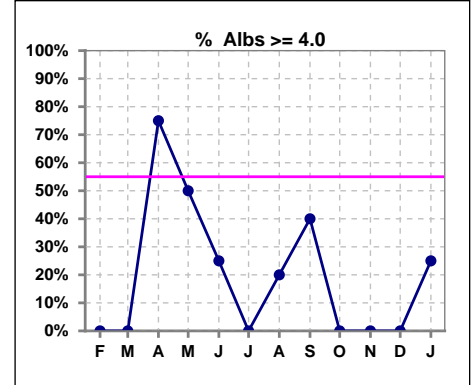
	Feb	Mar	Apr	May	Jun	Jul	Aug	Sep	Oct	Nov	Dec	Jan
# Pre Sys BP	3	2	4	4	4	4	5	5	7	4	4	8
# Pre Sys BP <= 165	2	2	4	3	4	4	4	3	6	4	4	8
Pop. Mean	157	138	127	139	140	138	139	150	146	130	140	139
Std. Deviation	11.5	10.6	17.4	28.9	21.7	8.3	20.2	35.5	21.4	9.5	11.2	13.3
% Pre Sys BP <= 165	67%	100%	100%	75%	100%	100%	80%	60%	86%	100%	100%	100%



*Albumin values use BCG method - as of July 2001

II. NUTRITION

	Feb	Mar	Apr	May	Jun	Jul	Aug	Sep	Oct	Nov	Dec	Jan
# Albumin	3	2	4	4	4	4	5	5	7	4	4	8
# Albumin >= 4.0	0	0	3	2	1	0	1	2	0	0	0	2
Pop. Mean	3.5	3.3	4.1	3.7	3.5	3.6	3.7	3.5	3.4	3.6	3.5	3.7
Std. Deviation	0.15	0.42	0.21	0.57	0.45	0.31	0.52	0.58	0.44	0.18	0.33	0.52
% Alb >= 4.0	0%	0%	75%	50%	25%	0%	20%	40%	0%	0%	0%	25%

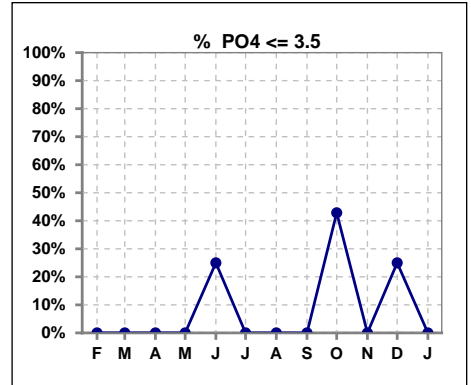


Methodology: a) All labs for 'Adequacy of Dialysis', 'Nutrition', 'Osteodystrophy', 'Anemia' and 'Diabetes' based on last value of month; b) BP's and #L processed are average of all values for month; c) Access data takes last access of month; d) Values for SGA and 'Infection Control' use most recent result.

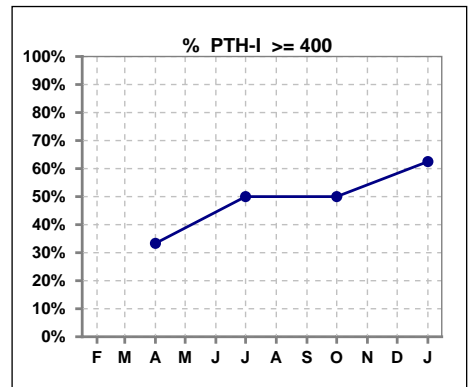
Lab methodology for PTH changed January 2012

III. OSTEODYSTROPHY

	Feb	Mar	Apr	May	Jun	Jul	Aug	Sep	Oct	Nov	Dec	Jan
# PO4	3	2	3	4	4	4	5	5	7	4	4	8
# PO4 <= 3.5	0	0	0	0	1	0	0	0	3	0	1	0
Pop. Mean	6.0	4.7	5.2	5.2	5.6	5.1	4.9	5.0	4.4	4.8	5.3	6.5
Std. Deviation	1.90	0.14	0.83	1.22	1.73	0.56	1.43	0.65	1.50	1.08	1.27	1.53
% PO4 <= 3.5	0%	0%	0%	0%	25%	0%	0%	0%	43%	0%	25%	0%



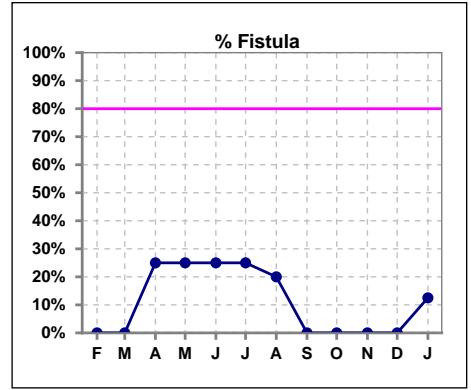
	Feb	Mar	Apr	May	Jun	Jul	Aug	Sep	Oct	Nov	Dec	Jan
# PTH-I			3			4			6			8
# PTH-I >= 400			1			2			3			5
Pop. Mean			512			439			498			494
Std. Deviation			566			305			399			221
% PTH-I >= 400			33%			50%			50%			63%



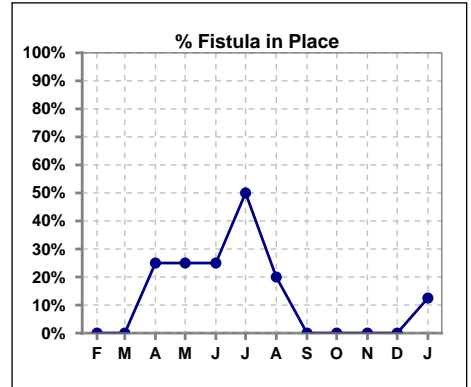
Methodology: a) All labs for 'Adequacy of Dialysis', 'Nutrition', 'Osteodystrophy', 'Anemia' and 'Diabetes' based on last value of month; b) BP's and #L processed are average of all values for month; c) Access data takes last access of month; d) Values for SGA and 'Infection Control' use most recent result.

IV. ACCESS

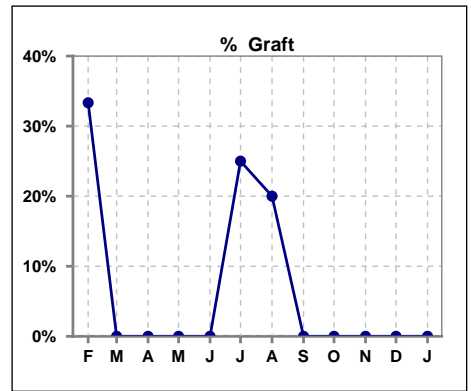
	Feb	Mar	Apr	May	Jun	Jul	Aug	Sep	Oct	Nov	Dec	Jan
# Access	3	2	4	4	4	4	5	5	7	4	4	8
# Fistula	0	0	1	1	1	1	1	0	0	0	0	1
% Fistula	0%	0%	25%	25%	25%	25%	20%	0%	0%	0%	0%	13%



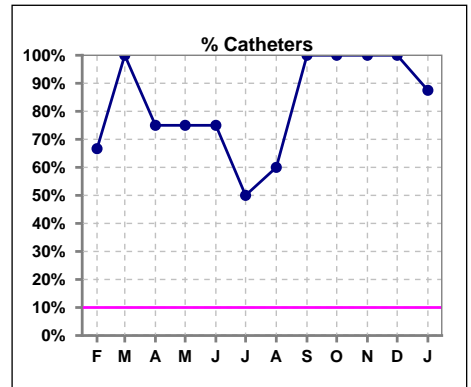
	Feb	Mar	Apr	May	Jun	Jul	Aug	Sep	Oct	Nov	Dec	Jan
# Patient	3	2	4	4	4	4	5	5	7	4	4	8
# Fistula in Place	0	0	1	1	1	2	1	0	0	0	0	1
% Fistula in Place	0%	0%	25%	25%	25%	50%	20%	0%	0%	0%	0%	13%



	Feb	Mar	Apr	May	Jun	Jul	Aug	Sep	Oct	Nov	Dec	Jan
# Access	3	2	4	4	4	4	5	5	7	4	4	8
# Graft	1	0	0	0	0	1	1	0	0	0	0	0
% Graft	33%	0%	0%	0%	0%	25%	20%	0%	0%	0%	0%	0%

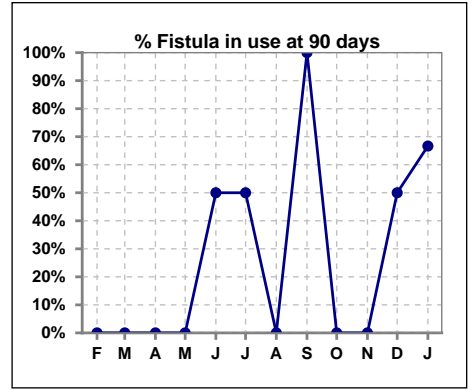


	Feb	Mar	Apr	May	Jun	Jul	Aug	Sep	Oct	Nov	Dec	Jan
# Access	3	2	4	4	4	4	5	5	7	4	4	8
# Catheters	2	2	3	3	3	2	3	5	7	4	4	7
% Catheters	67%	100%	75%	75%	75%	50%	60%	100%	100%	100%	100%	88%

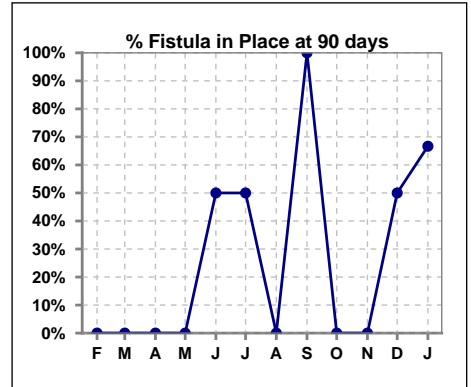


IV. ACCESS - CONT. Access at 90 days for those patients that reached 90 days within the month.

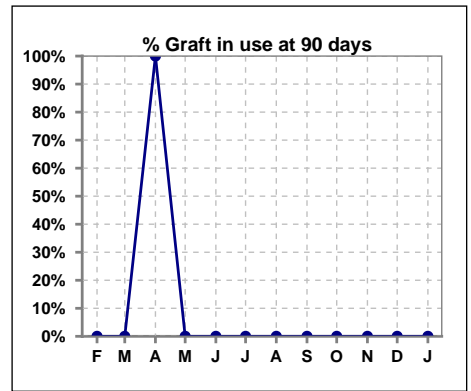
	Feb	Mar	Apr	May	Jun	Jul	Aug	Sep	Oct	Nov	Dec	Jan
# Patient	0	1	1	2	2	2	1	2	1	3	2	3
# Fistula in use	0	0	0	0	1	1	0	2	0	0	1	2
% Fistula in use	0%	0%	0%	0%	50%	50%	0%	100%	0%	0%	50%	67%



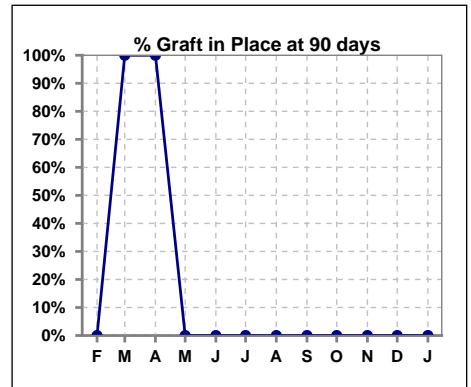
	Feb	Mar	Apr	May	Jun	Jul	Aug	Sep	Oct	Nov	Dec	Jan
# Patient	0	1	1	2	2	2	1	2	1	3	2	3
# Fistula in Place	0	0	0	0	1	1	0	2	0	0	1	2
% Fistula in Place	0%	0%	0%	0%	50%	50%	0%	100%	0%	0%	50%	67%



	Feb	Mar	Apr	May	Jun	Jul	Aug	Sep	Oct	Nov	Dec	Jan
# Patient	0	1	1	2	2	2	1	2	1	3	2	3
# Graft in use	0	0	1	0	0	0	0	0	0	0	0	0
% Graft in use	0%	0%	100%	0%	0%	0%	0%	0%	0%	0%	0%	0%



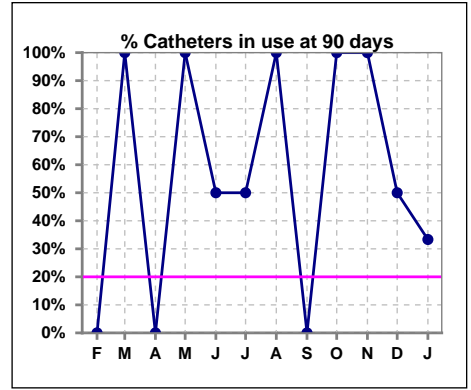
	Feb	Mar	Apr	May	Jun	Jul	Aug	Sep	Oct	Nov	Dec	Jan
# Patient	0	1	1	2	2	2	1	2	1	3	2	3
# Graft in Place	0	1	1	0	0	0	0	0	0	0	0	0
% Graft in Place	0%	100%	100%	0%	0%	0%	0%	0%	0%	0%	0%	0%



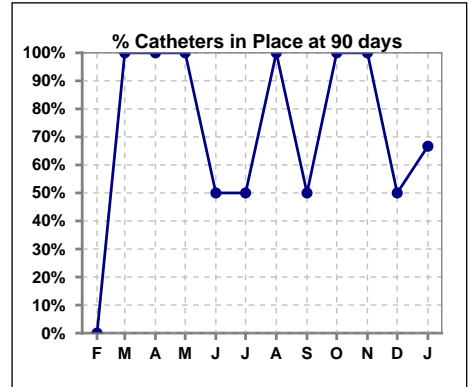
Methodology: a) All labs for 'Adequacy of Dialysis', 'Nutrition', 'Osteodystrophy', 'Anemia' and 'Diabetes' based on last value of month; b) BP's and #L processed are average of all values for month; c) Access data takes last access of month; d) Values for SGA and 'Infection Control' use most recent result.

IV. ACCESS - CONT. Access at 90 days for those patients that reached 90 days within the month.

	Feb	Mar	Apr	May	Jun	Jul	Aug	Sep	Oct	Nov	Dec	Jan
# Patient	0	1	1	2	2	2	1	2	1	3	2	3
# Catheters in use	0	1	0	2	1	1	1	0	1	3	1	1
% Catheters in use	0%	100%	0%	100%	50%	50%	100%	0%	100%	100%	50%	33%



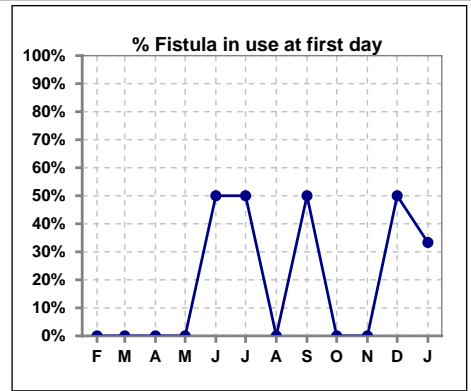
	Feb	Mar	Apr	May	Jun	Jul	Aug	Sep	Oct	Nov	Dec	Jan
# Patient	0	1	1	2	2	2	1	2	1	3	2	3
# Catheters in Place	0	1	1	2	1	1	1	1	1	3	1	2
% Catheters in Place	0%	100%	100%	100%	50%	50%	100%	50%	100%	100%	50%	67%



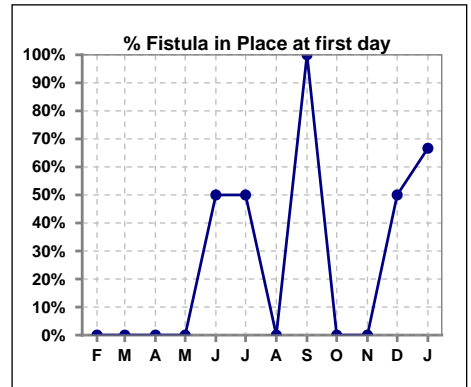
Methodology: a) All labs for 'Adequacy of Dialysis', 'Nutrition', 'Osteodystrophy', 'Anemia' and 'Diabetes' based on last value of month; b) BP's and #L processed are average of all values for month; c) Access data takes last access of month; d) Values for SGA and 'Infection Control' use most recent result.

IV. ACCESS - CONT. Access at first day for those patients that reached 90 days within the month.

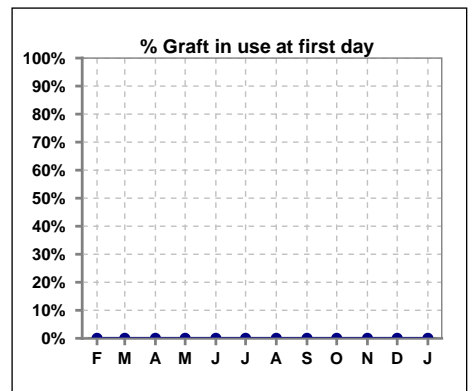
	Feb	Mar	Apr	May	Jun	Jul	Aug	Sep	Oct	Nov	Dec	Jan
# Patient	0	1	1	2	2	2	1	2	1	3	2	3
# Fistula in use	0	0	0	0	1	1	0	1	0	0	1	1
% Fistula in use	0%	0%	0%	0%	50%	50%	0%	50%	0%	0%	50%	33%



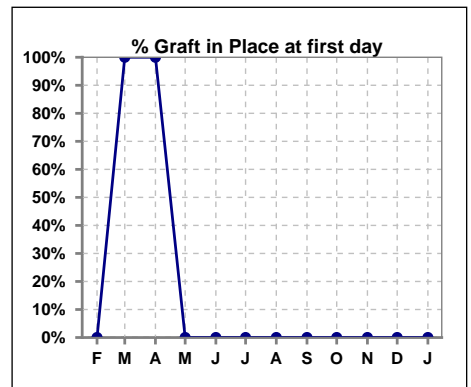
	Feb	Mar	Apr	May	Jun	Jul	Aug	Sep	Oct	Nov	Dec	Jan
# Patient	0	1	1	2	2	2	1	2	1	3	2	3
# Fistula in Place	0	0	0	0	1	1	0	2	0	0	1	2
% Fistula in Place	0%	0%	0%	0%	50%	50%	0%	100%	0%	0%	50%	67%



	Feb	Mar	Apr	May	Jun	Jul	Aug	Sep	Oct	Nov	Dec	Jan
# Patient	0	1	1	2	2	2	1	2	1	3	2	3
# Graft in use	0	0	0	0	0	0	0	0	0	0	0	0
% Graft in use	0%	0%	0%	0%	0%	0%	0%	0%	0%	0%	0%	0%



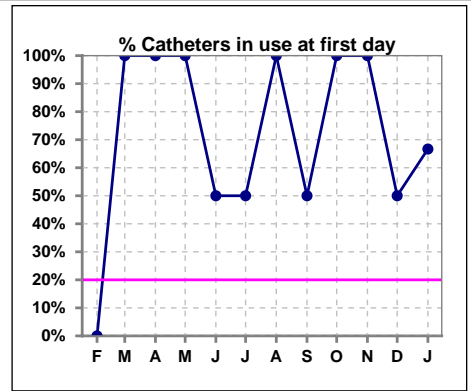
	Feb	Mar	Apr	May	Jun	Jul	Aug	Sep	Oct	Nov	Dec	Jan
# Patient	0	1	1	2	2	2	1	2	1	3	2	3
# Graft in Place	0	1	1	0	0	0	0	0	0	0	0	0
% Graft in Place	0%	100%	100%	0%	0%	0%	0%	0%	0%	0%	0%	0%



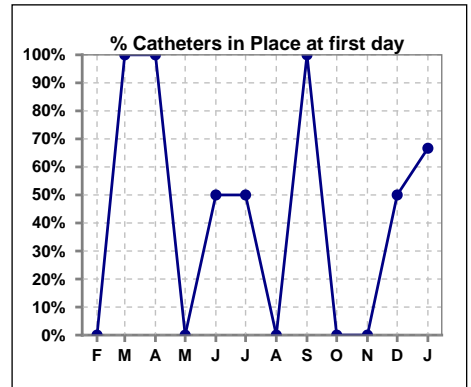
Methodology: a) All labs for 'Adequacy of Dialysis', 'Nutrition', 'Osteodystrophy', 'Anemia' and 'Diabetes' based on last value of month; b) BP's and #L processed are average of all values for month; c) Access data takes last access of month; d) Values for SGA and 'Infection Control' use most recent result.

IV. ACCESS - CONT. Access at first day for those patients that reached 90 days within the month.

	Feb	Mar	Apr	May	Jun	Jul	Aug	Sep	Oct	Nov	Dec	Jan
# Patient	0	1	1	2	2	2	1	2	1	3	2	3
# Catheters in use	0	1	1	2	1	1	1	1	1	3	1	2
% Catheters in use	0%	100%	100%	100%	50%	50%	100%	50%	100%	100%	50%	67%



	Feb	Mar	Apr	May	Jun	Jul	Aug	Sep	Oct	Nov	Dec	Jan
# Patient	0	1	1	2	2	2	1	2	1	3	2	3
# Catheters in Place	0	1	1	0	1	1	0	2	0	0	1	2
% Catheters in Place	0%	100%	100%	0%	50%	50%	0%	100%	0%	0%	50%	67%

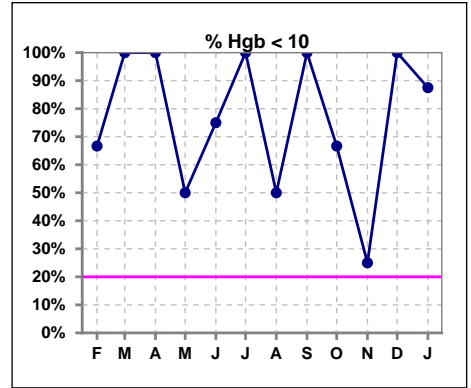


Methodology: a) All labs for 'Adequacy of Dialysis', 'Nutrition', 'Osteodystrophy', 'Anemia' and 'Diabetes' based on last value of month; b) BP's and #L processed are average of all values for month; c) Access data takes last access of month; d) Values for SGA and 'Infection Control' use most recent result.

V. ANEMIA

	Feb	Mar	Apr	May	Jun	Jul	Aug	Sep	Oct	Nov	Dec	Jan
# Hgb	3	2	3	2	4	4	4	3	6	4	4	8
# Hgb <= 10	2	2	3	1	3	4	2	3	4	1	4	7
Pop. Mean	9.9	8.7	9.3	10.5	9.1	9.3	9.7	9.2	9.7	10.3	8.1	8.6
Std. Deviation	1.2	0.5	0.7	1.0	0.8	0.5	1.9	0.8	1.5	0.5	1.0	1.3
% Hgb <= 10	67%	100%	100%	50%	75%	100%	50%	100%	67%	25%	100%	88%

Note: Excludes patients who received no ESA in month.



	Feb	Mar	Apr	May	Jun	Jul	Aug	Sep	Oct	Nov	Dec	Jan
# Hgb	3	2	3	2	4	4	4	3	6	4	4	8
# Hgb >= 12	0	0	0	0	0	0	0	0	0	0	0	0
Pop. Mean	9.9	8.7	9.3	10.5	9.1	9.3	9.7	9.2	9.7	10.3	8.1	8.6
Std. Deviation	1.2	0.5	0.7	1.0	0.8	0.5	1.9	0.8	1.5	0.5	1.0	1.3
% Hgb >= 12	0%	0%	0%	0%	0%	0%	0%	0%	0%	0%	0%	0%

Note: Excludes patients who received no ESA in month.

