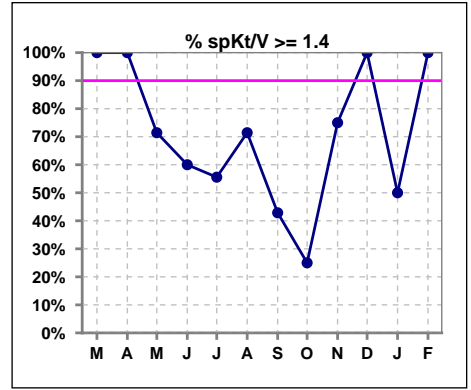
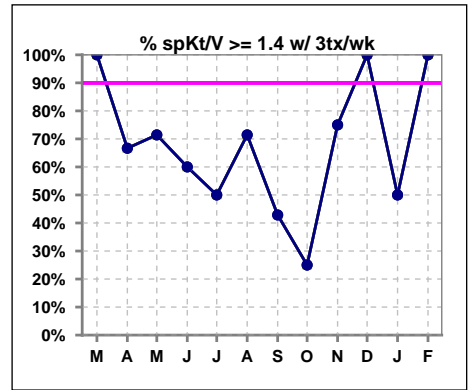


I. ADEQUACY OF DIALYSIS

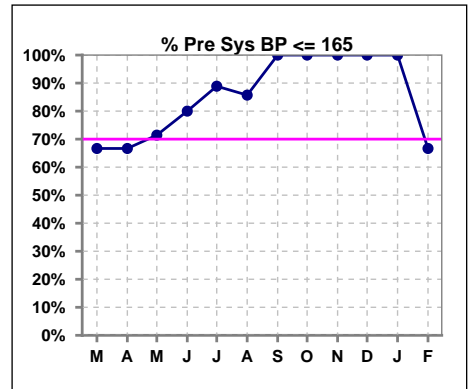
	Mar	Apr	May	Jun	Jul	Aug	Sep	Oct	Nov	Dec	Jan	Feb
# spKt/V	3	3	7	5	9	7	7	4	4	2	2	3
# spKt/V >= 1.4	3	3	5	3	5	5	3	1	3	2	1	3
Pop. Mean	1.91	1.72	1.68	1.72	1.57	1.62	1.33	1.04	1.51	1.58	1.42	1.59
Std. Deviation	0.20	0.28	0.50	0.69	0.66	0.39	0.41	0.52	0.16	0.21	0.06	0.25
% spKt/V >= 1.4	100%	100%	71%	60%	56%	71%	43%	25%	75%	100%	50%	100%
% spKt/V >= 1.2	100%	100%	86%	80%	78%	100%	71%	50%	100%	100%	100%	100%



	Mar	Apr	May	Jun	Jul	Aug	Sep	Oct	Nov	Dec	Jan	Feb
# spKt/V w/ 3tx/wk	3	3	7	5	8	7	7	4	4	2	2	3
# spKt/V >= 1.4 w/3tx/wk	3	2	5	3	4	5	3	1	3	2	1	3
Pop. Mean	1.91	1.71	1.68	1.72	1.38	1.62	1.33	1.04	1.51	1.58	1.42	1.59
Std. Deviation	0.20	0.28	0.50	0.69	0.36	0.39	0.41	0.52	0.16	0.21	0.06	0.25
% spKt/V >= 1.4 w/3tx/wk	100%	67%	71%	60%	50%	71%	43%	25%	75%	100%	50%	100%



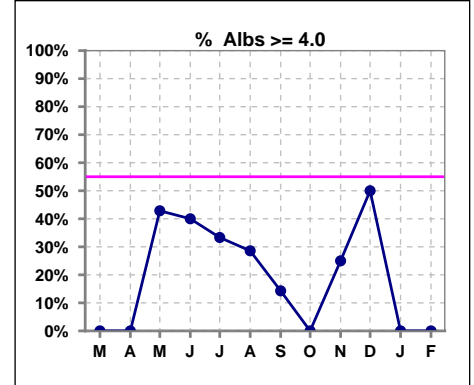
	Mar	Apr	May	Jun	Jul	Aug	Sep	Oct	Nov	Dec	Jan	Feb
# Pre Sys BP	3	3	7	5	9	7	7	4	4	2	2	3
# Pre Sys BP <= 165	2	2	5	4	8	7	7	4	4	2	2	2
Pop. Mean	134	153	140	138	129	141	138	129	136	138	157	157
Std. Deviation	35.5	16.5	23.7	17.6	18.4	16.1	14.9	12.2	18.9	1.4	9.9	11.5
%Pre Sys BP <=165	67%	67%	71%	80%	89%	86%	100%	100%	100%	100%	100%	67%



*Albumin values use BCG method - as of July 2001

II. NUTRITION

	Mar	Apr	May	Jun	Jul	Aug	Sep	Oct	Nov	Dec	Jan	Feb
# Albumin	3	3	7	5	9	7	7	4	4	2	2	3
# Albumin >= 4.0	0	0	3	2	3	2	1	0	1	1	0	0
Pop. Mean	3.2	3.5	3.7	3.6	3.7	3.5	3.4	3.1	3.5	4.1	3.5	3.5
Std. Deviation	0.68	0.67	0.51	0.58	0.66	0.64	0.56	0.61	0.83	0.57	0.42	0.15
% Alb >= 4.0	0%	0%	43%	40%	33%	29%	14%	0%	25%	50%	0%	0%

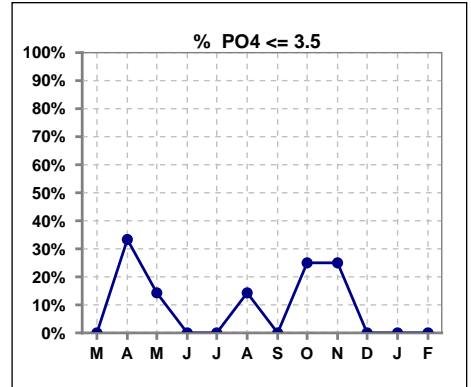


Methodology: a) All labs for 'Adequacy of Dialysis', 'Nutrition', 'Osteodystrophy', 'Anemia' and 'Diabetes' based on last value of month; b) BP's and #L processed are average of all values for month; c) Access data takes last access of month; d) Values for SGA and 'Infection Control' use most recent result.

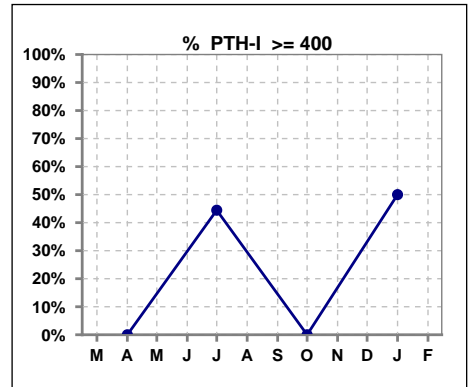
Lab methodology for PTH changed January 2012

III. OSTEODYSTROPHY

	Mar	Apr	May	Jun	Jul	Aug	Sep	Oct	Nov	Dec	Jan	Feb
# PO4	3	3	7	5	9	7	7	4	4	2	2	3
# PO4 <= 3.5	0	1	1	0	0	1	0	1	1	0	0	0
Pop. Mean	6.4	4.3	5.3	6.0	6.0	5.2	5.4	6.2	5.6	5.4	4.8	6.0
Std. Deviation	2.45	0.75	0.99	0.23	2.24	2.28	2.07	3.25	2.64	0.49	0.49	1.90
% PO4 <= 3.5	0%	33%	14%	0%	0%	14%	0%	25%	25%	0%	0%	0%



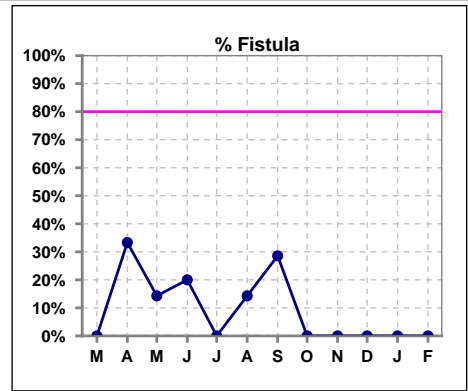
	Mar	Apr	May	Jun	Jul	Aug	Sep	Oct	Nov	Dec	Jan	Feb
# PTH-I		3			9			3			2	
# PTH-I >= 400		0			4			0			1	
Pop. Mean		261			465			152			429	
Std. Deviation		108			454			83			430	
% PTH-I >= 400		0%			44%			0%			50%	



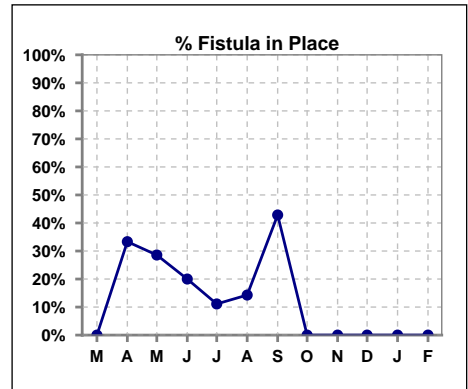
Methodology: a) All labs for 'Adequacy of Dialysis', 'Nutrition', 'Osteodystrophy', 'Anemia' and 'Diabetes' based on last value of month; b) BP's and #L processed are average of all values for month; c) Access data takes last access of month; d) Values for SGA and 'Infection Control' use most recent result.

IV. ACCESS

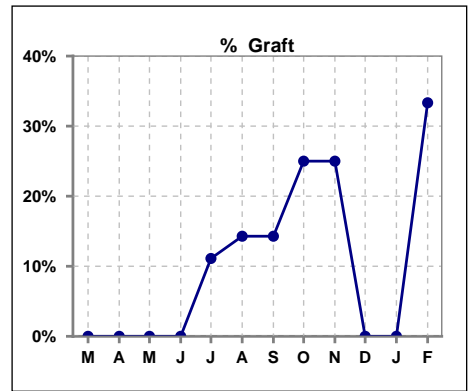
	Mar	Apr	May	Jun	Jul	Aug	Sep	Oct	Nov	Dec	Jan	Feb
# Access	3	3	7	5	9	7	7	4	4	2	2	3
# Fistula	0	1	1	1	0	1	2	0	0	0	0	0
% Fistula	0%	33%	14%	20%	0%	14%	29%	0%	0%	0%	0%	0%



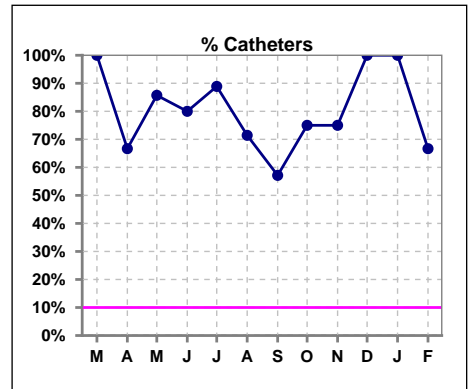
	Mar	Apr	May	Jun	Jul	Aug	Sep	Oct	Nov	Dec	Jan	Feb
# Patient	3	3	7	5	9	7	7	4	4	2	2	3
# Fistula in Place	0	1	2	1	1	1	3	0	0	0	0	0
% Fistula in Place	0%	33%	29%	20%	11%	14%	43%	0%	0%	0%	0%	0%



	Mar	Apr	May	Jun	Jul	Aug	Sep	Oct	Nov	Dec	Jan	Feb
# Access	3	3	7	5	9	7	7	4	4	2	2	3
# Graft	0	0	0	0	1	1	1	1	1	0	0	1
% Graft	0%	0%	0%	0%	11%	14%	14%	25%	25%	0%	0%	33%



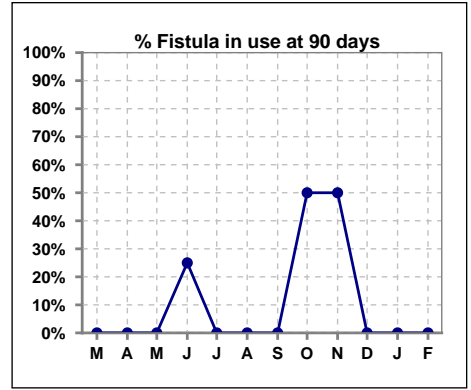
	Mar	Apr	May	Jun	Jul	Aug	Sep	Oct	Nov	Dec	Jan	Feb
# Access	3	3	7	5	9	7	7	4	4	2	2	3
# Catheters	3	2	6	4	8	5	4	3	3	2	2	2
% Catheters	100%	67%	86%	80%	89%	71%	57%	75%	75%	100%	100%	67%



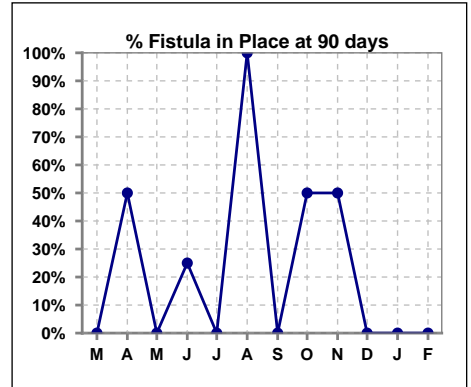
Methodology: a) All labs for 'Adequacy of Dialysis', 'Nutrition', 'Osteodystrophy', 'Anemia' and 'Diabetes' based on last value of month; b) BP's and #L processed are average of all values for month; c) Access data takes last access of month; d) Values for SGA and 'Infection Control' use most recent result.

IV. ACCESS - CONT. Access at 90 days for those patients that reached 90 days within the month.

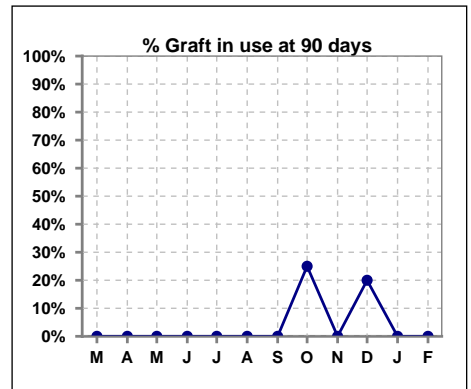
	Mar	Apr	May	Jun	Jul	Aug	Sep	Oct	Nov	Dec	Jan	Feb
# Patient	0	2	0	4	1	1	1	4	2	5	0	0
# Fistula in use	0	0	0	1	0	0	0	2	1	0	0	0
% Fistula in use	0%	0%	0%	25%	0%	0%	0%	50%	50%	0%	0%	0%



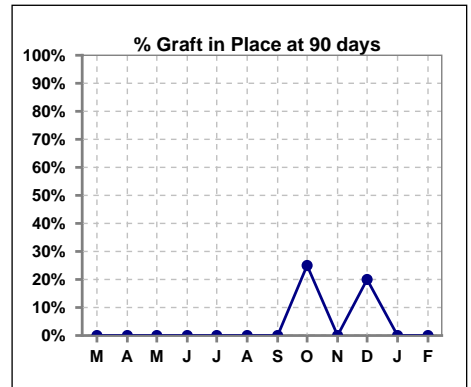
	Mar	Apr	May	Jun	Jul	Aug	Sep	Oct	Nov	Dec	Jan	Feb
# Patient	0	2	0	4	1	1	1	4	2	5	0	0
# Fistula in Place	0	1	0	1	0	1	0	2	1	0	0	0
% Fistula in Place	0%	50%	0%	25%	0%	100%	0%	50%	50%	0%	0%	0%



	Mar	Apr	May	Jun	Jul	Aug	Sep	Oct	Nov	Dec	Jan	Feb
# Patient	0	2	0	4	1	1	1	4	2	5	0	0
# Graft in use	0	0	0	0	0	0	0	1	0	1	0	0
% Graft in use	0%	0%	0%	0%	0%	0%	0%	25%	0%	20%	0%	0%



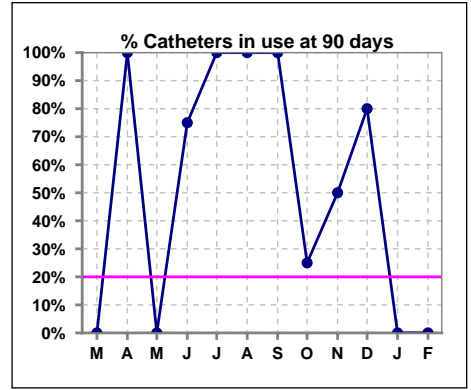
	Mar	Apr	May	Jun	Jul	Aug	Sep	Oct	Nov	Dec	Jan	Feb
# Patient	0	2	0	4	1	1	1	4	2	5	0	0
# Graft in Place	0	0	0	0	0	0	0	1	0	1	0	0
% Graft in Place	0%	0%	0%	0%	0%	0%	0%	25%	0%	20%	0%	0%



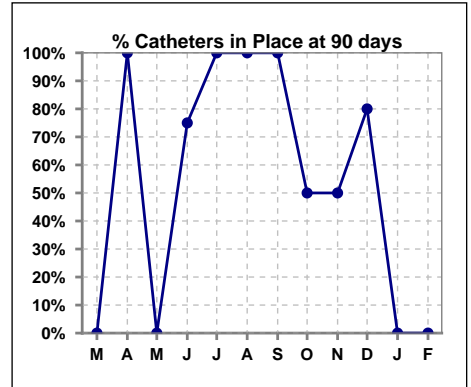
Methodology: a) All labs for 'Adequacy of Dialysis', 'Nutrition', 'Osteodystrophy', 'Anemia' and 'Diabetes' based on last value of month; b) BP's and #L processed are average of all values for month; c) Access data takes last access of month; d) Values for SGA and 'Infection Control' use most recent result.

IV. ACCESS - CONT. Access at 90 days for those patients that reached 90 days within the month.

	Mar	Apr	May	Jun	Jul	Aug	Sep	Oct	Nov	Dec	Jan	Feb
# Patient	0	2	0	4	1	1	1	4	2	5	0	0
# Catheters in use	0	2	0	3	1	1	1	1	1	4	0	0
% Catheters in use	0%	100%	0%	75%	100%	100%	100%	25%	50%	80%	0%	0%



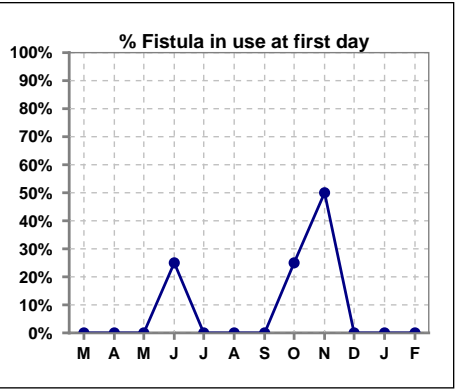
	Mar	Apr	May	Jun	Jul	Aug	Sep	Oct	Nov	Dec	Jan	Feb
# Patient	0	2	0	4	1	1	1	4	2	5	0	0
# Catheters in Place	0	2	0	3	1	1	1	2	1	4	0	0
% Catheters in Place	0%	100%	0%	75%	100%	100%	100%	50%	50%	80%	0%	0%



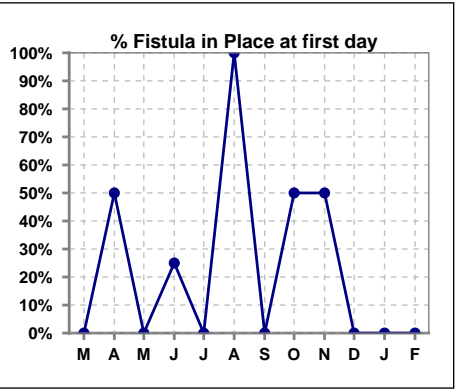
Methodology: a) All labs for 'Adequacy of Dialysis', 'Nutrition', 'Osteodystrophy', 'Anemia' and 'Diabetes' based on last value of month; b) BP's and #L processed are average of all values for month; c) Access data takes last access of month; d) Values for SGA and 'Infection Control' use most recent result.

IV. ACCESS - CONT. Access at first day for those patients that reached 90 days within the month.

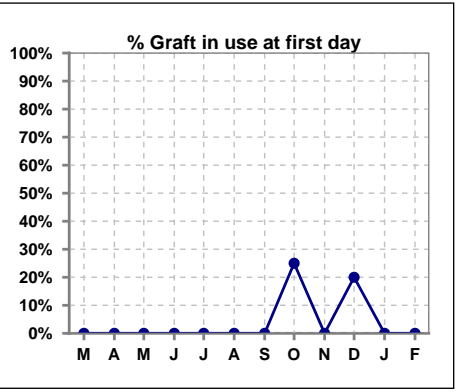
	Mar	Apr	May	Jun	Jul	Aug	Sep	Oct	Nov	Dec	Jan	Feb
# Patient	0	2	0	4	1	1	1	4	2	5	0	0
# Fistula in use	0	0	0	1	0	0	0	1	1	0	0	0
% Fistula in use	0%	0%	0%	25%	0%	0%	0%	25%	50%	0%	0%	0%



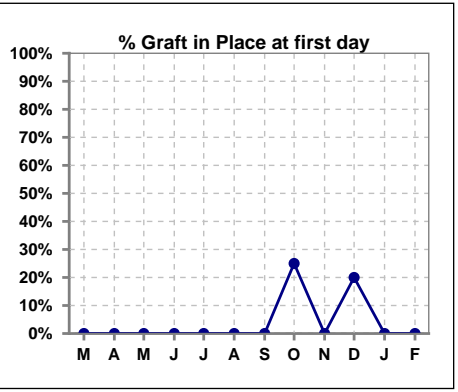
	Mar	Apr	May	Jun	Jul	Aug	Sep	Oct	Nov	Dec	Jan	Feb
# Patient	0	2	0	4	1	1	1	4	2	5	0	0
# Fistula in Place	0	1	0	1	0	1	0	2	1	0	0	0
% Fistula in Place	0%	50%	0%	25%	0%	100%	0%	50%	50%	0%	0%	0%



	Mar	Apr	May	Jun	Jul	Aug	Sep	Oct	Nov	Dec	Jan	Feb
# Patient	0	2	0	4	1	1	1	4	2	5	0	0
# Graft in use	0	0	0	0	0	0	0	1	0	1	0	0
% Graft in use	0%	0%	0%	0%	0%	0%	0%	25%	0%	20%	0%	0%



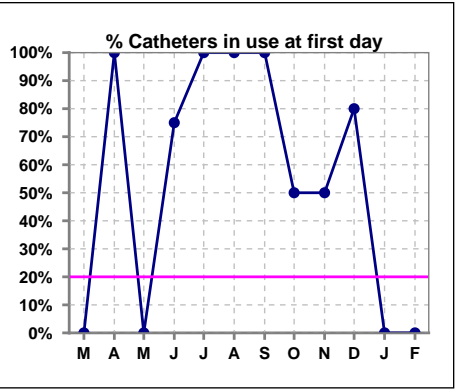
	Mar	Apr	May	Jun	Jul	Aug	Sep	Oct	Nov	Dec	Jan	Feb
# Patient	0	2	0	4	1	1	1	4	2	5	0	0
# Graft in Place	0	0	0	0	0	0	0	1	0	1	0	0
% Graft in Place	0%	0%	0%	0%	0%	0%	0%	25%	0%	20%	0%	0%



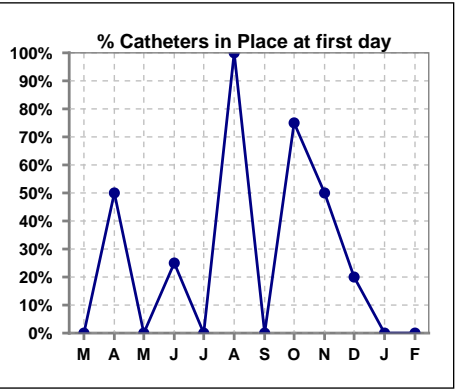
Methodology: a) All labs for 'Adequacy of Dialysis', 'Nutrition', 'Osteodystrophy', 'Anemia' and 'Diabetes' based on last value of month; b) BP's and #L processed are average of all values for month; c) Access data takes last access of month; d) Values for SGA and 'Infection Control' use most recent result.

IV. ACCESS - CONT. Access at first day for those patients that reached 90 days within the month.

	Mar	Apr	May	Jun	Jul	Aug	Sep	Oct	Nov	Dec	Jan	Feb
# Patient	0	2	0	4	1	1	1	4	2	5	0	0
# Catheters in use	0	2	0	3	1	1	1	2	1	4	0	0
% Catheters in use	0%	100%	0%	75%	100%	100%	100%	50%	50%	80%	0%	0%



	Mar	Apr	May	Jun	Jul	Aug	Sep	Oct	Nov	Dec	Jan	Feb
# Patient	0	2	0	4	1	1	1	4	2	5	0	0
# Catheters in Place	0	1	0	1	0	1	0	3	1	1	0	0
% Catheters in Place	0%	50%	0%	25%	0%	100%	0%	75%	50%	20%	0%	0%

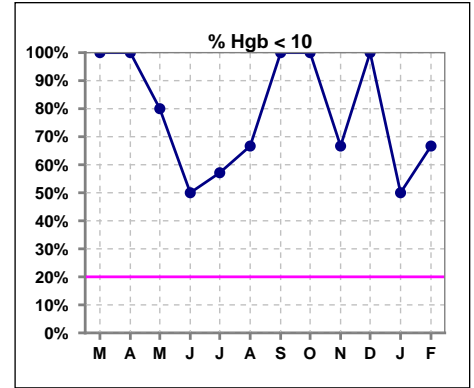


Methodology: a) All labs for 'Adequacy of Dialysis', 'Nutrition', 'Osteodystrophy', 'Anemia' and 'Diabetes' based on last value of month; b) BP's and #L processed are average of all values for month; c) Access data takes last access of month; d) Values for SGA and 'Infection Control' use most recent result.

V. ANEMIA

	Mar	Apr	May	Jun	Jul	Aug	Sep	Oct	Nov	Dec	Jan	Feb
# Hgb	3	3	5	4	7	6	4	4	3	2	2	3
# Hgb <= 10	3	3	4	2	4	4	4	4	2	2	1	2
Pop. Mean	9.3	9.9	9.2	9.5	9.6	9.2	8.7	8.5	10.0	9.4	9.9	9.9
Std. Deviation	0.6	0.2	0.8	2.7	2.2	1.1	0.5	1.3	1.6	0.2	2.5	1.2
% Hgb <= 10	100%	100%	80%	50%	57%	67%	100%	100%	67%	100%	50%	67%

Note: Excludes patients who received no ESA in month.



	Mar	Apr	May	Jun	Jul	Aug	Sep	Oct	Nov	Dec	Jan	Feb
# Hgb	3	3	5	4	7	6	4	4	3	2	2	3
# Hgb >= 12	0	0	0	0	1	0	0	0	0	0	0	0
Pop. Mean	9.3	9.9	9.2	9.5	9.6	9.2	8.7	8.5	10.0	9.4	9.9	9.9
Std. Deviation	0.6	0.2	0.8	2.7	2.2	1.1	0.5	1.3	1.6	0.2	2.5	1.2
% Hgb >= 12	0%	0%	0%	0%	14%	0%	0%	0%	0%	0%	0%	0%

Note: Excludes patients who received no ESA in month.

