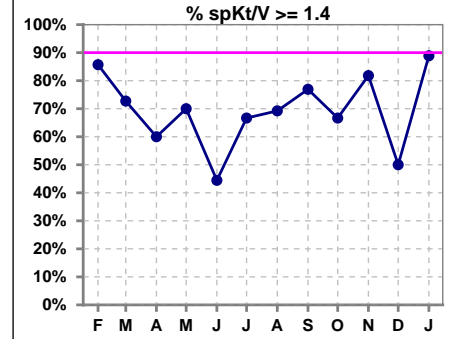
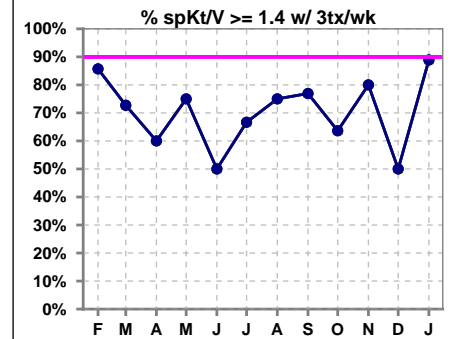


## I. ADEQUACY OF DIALYSIS

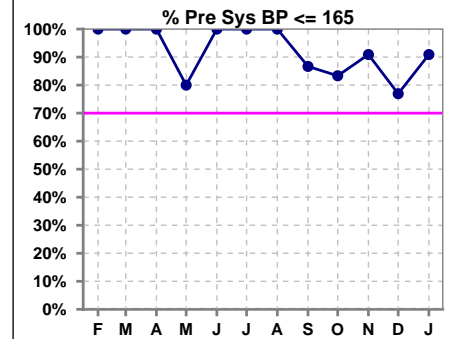
	Feb	Mar	Apr	May	Jun	Jul	Aug	Sep	Oct	Nov	Dec	Jan
# spKt/V	7	11	10	10	9	9	13	13	12	11	12	9
# spKt/V >= 1.4	6	8	6	7	4	6	9	10	8	9	6	8
Pop. Mean	1.77	1.75	1.62	1.59	1.45	1.43	1.51	1.70	1.68	1.77	1.53	1.70
Std. Deviation	0.33	0.44	0.41	0.33	0.35	0.27	0.23	0.31	0.41	0.27	0.55	0.41
% spKt/V >= 1.4	86%	73%	60%	70%	44%	67%	69%	77%	67%	82%	50%	89%
% spKt/V >= 1.2	100%	91%	100%	100%	89%	89%	85%	100%	92%	100%	83%	100%



	Feb	Mar	Apr	May	Jun	Jul	Aug	Sep	Oct	Nov	Dec	Jan
# spKt/V w/ 3tx/wk	7	11	10	8	8	9	12	13	11	10	12	9
# spKt/V >= 1.4 w/3tx/wk	6	8	6	6	4	6	9	10	7	8	6	8
Pop. Mean	1.77	1.75	1.62	1.56	1.47	1.43	1.54	1.70	1.62	1.72	1.53	1.70
Std. Deviation	0.33	0.44	0.41	0.27	0.38	0.27	0.20	0.31	0.37	0.22	0.55	0.41
% spKt/V >= 1.4 w/3tx/wk	86%	73%	60%	75%	50%	67%	75%	77%	64%	80%	50%	89%



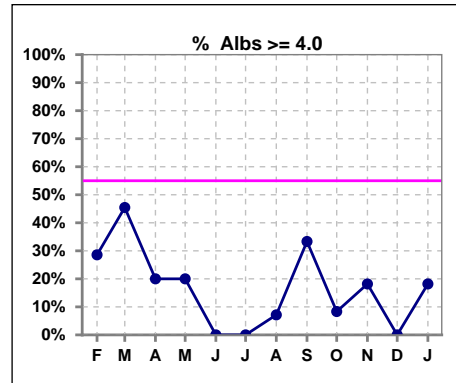
	Feb	Mar	Apr	May	Jun	Jul	Aug	Sep	Oct	Nov	Dec	Jan
# Pre Sys BP	7	11	10	10	9	9	14	15	12	11	13	11
# Pre Sys BP <= 165	7	11	10	8	9	9	14	13	11	10	10	10
Pop. Mean	130	140	134	139	135	128	133	136	138	137	144	138
Std. Deviation	20.0	11.8	14.6	16.1	19.8	14.8	17.9	20.9	16.4	17.2	22.1	21.8
% Pre Sys BP <= 165	100%	100%	100%	80%	100%	100%	100%	87%	83%	91%	77%	91%



\*Albumin values use BCG method - as of July 2001

## II. NUTRITION

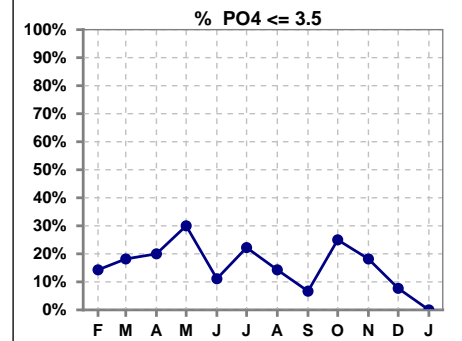
	Feb	Mar	Apr	May	Jun	Jul	Aug	Sep	Oct	Nov	Dec	Jan
# Albumin	7	11	10	10	9	9	14	15	12	11	13	11
# Albumin >= 4.0	2	5	2	2	0	0	1	5	1	2	0	2
Pop. Mean	3.6	3.8	3.6	3.6	3.4	3.4	3.4	3.6	3.6	3.6	3.3	3.4
Std. Deviation	0.53	0.40	0.41	0.43	0.24	0.30	0.52	0.48	0.29	0.56	0.31	0.57
% Alb >= 4.0	29%	45%	20%	20%	0%	0%	7%	33%	8%	18%	0%	18%



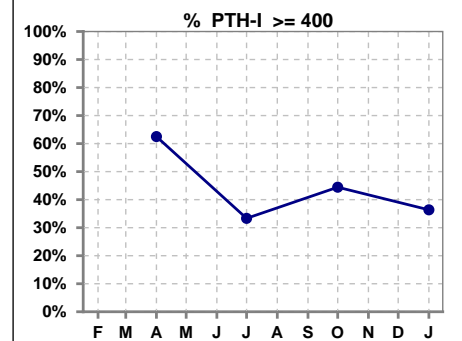
Lab methodology for PTH changed January 2012

### III. OSTEODYSTROPHY

	Feb	Mar	Apr	May	Jun	Jul	Aug	Sep	Oct	Nov	Dec	Jan
# PO4	7	11	10	10	9	9	14	15	12	11	13	11
# PO4 <= 3.5	1	2	2	3	1	2	2	1	3	2	1	0
Pop. Mean	6.8	5.9	4.8	5.0	5.7	5.4	5.6	5.9	4.6	4.4	5.5	5.7
Std. Deviation	2.89	2.22	1.85	1.70	1.63	1.86	1.23	1.41	1.44	1.25	1.60	1.85
% PO4 <= 3.5	14%	18%	20%	30%	11%	22%	14%	7%	25%	18%	8%	0%

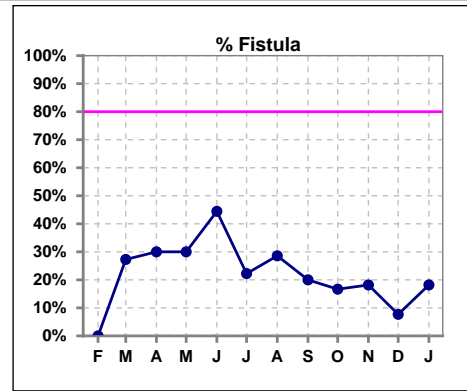


	Feb	Mar	Apr	May	Jun	Jul	Aug	Sep	Oct	Nov	Dec	Jan
# PTH-I			8			9			9			11
# PTH-I >= 400			5			3			4			4
Pop. Mean			456			343			424			774
Std. Deviation			246			280			312			1486
% PTH-I >= 400			63%			33%			44%			36%

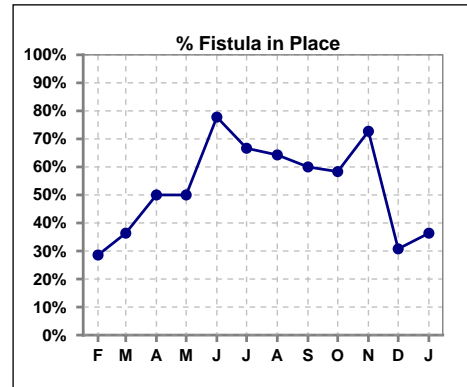


#### IV. ACCESS

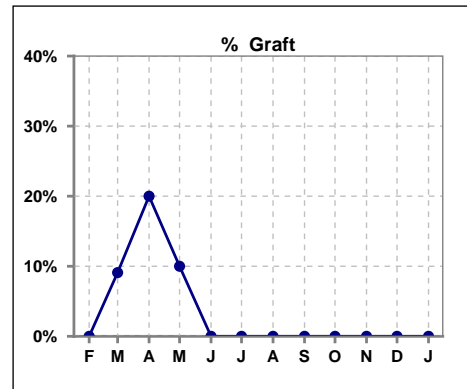
	Feb	Mar	Apr	May	Jun	Jul	Aug	Sep	Oct	Nov	Dec	Jan
# Access	7	11	10	10	9	9	14	15	12	11	13	11
# Fistula	0	3	3	3	4	2	4	3	2	2	1	2
% Fistula	0%	27%	30%	30%	44%	22%	29%	20%	17%	18%	8%	18%



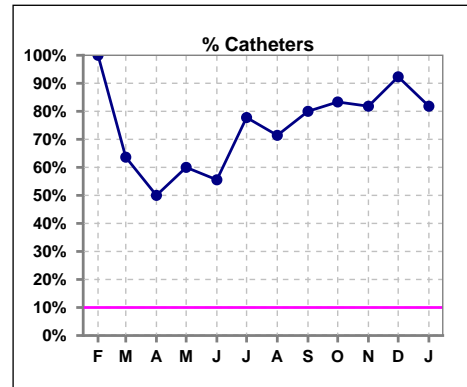
	Feb	Mar	Apr	May	Jun	Jul	Aug	Sep	Oct	Nov	Dec	Jan
# Patient	7	11	10	10	9	9	14	15	12	11	13	11
# Fistula in Place	2	4	5	5	7	6	9	9	7	8	4	4
% Fistula in Place	29%	36%	50%	50%	78%	67%	64%	60%	58%	73%	31%	36%



	Feb	Mar	Apr	May	Jun	Jul	Aug	Sep	Oct	Nov	Dec	Jan
# Access	7	11	10	10	9	9	14	15	12	11	13	11
# Graft	0	1	2	1	0	0	0	0	0	0	0	0
% Graft	0%	9%	20%	10%	0%	0%	0%	0%	0%	0%	0%	0%

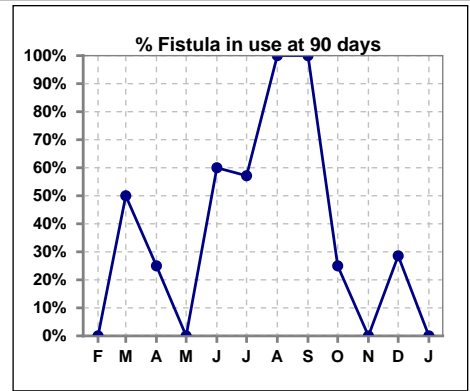


	Feb	Mar	Apr	May	Jun	Jul	Aug	Sep	Oct	Nov	Dec	Jan
# Access	7	11	10	10	9	9	14	15	12	11	13	11
# Catheters	7	7	5	6	5	7	10	12	10	9	12	9
% Catheters	100%	64%	50%	60%	56%	78%	71%	80%	83%	82%	92%	82%

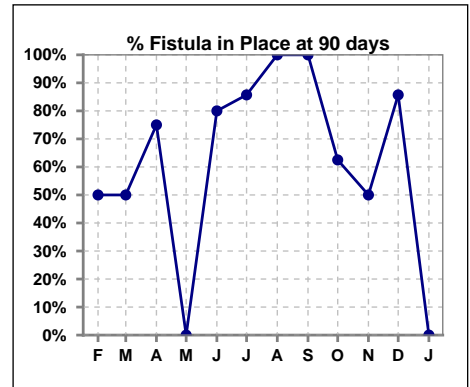


**IV. ACCESS - CONT. Access at 90 days for those patients that reached 90 days within the month.**

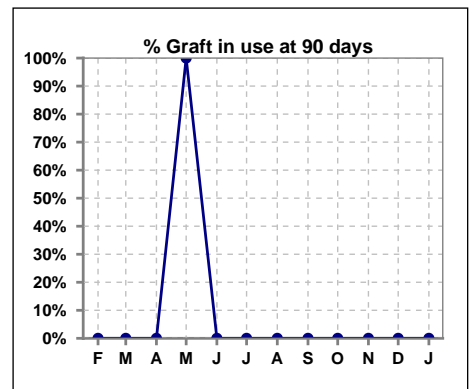
	Feb	Mar	Apr	May	Jun	Jul	Aug	Sep	Oct	Nov	Dec	Jan
# Patient	2	2	4	1	5	7	2	4	8	2	7	2
# Fistula in use	0	1	1	0	3	4	2	4	2	0	2	0
% Fistula in use	0%	50%	25%	0%	60%	57%	100%	100%	25%	0%	29%	0%



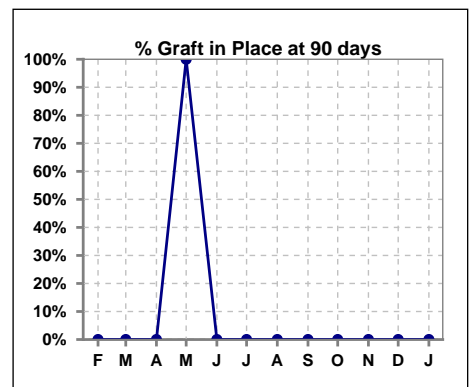
	Feb	Mar	Apr	May	Jun	Jul	Aug	Sep	Oct	Nov	Dec	Jan
# Patient	2	2	4	1	5	7	2	4	8	2	7	2
# Fistula in Place	1	1	3	0	4	6	2	4	5	1	6	0
% Fistula in Place	50%	50%	75%	0%	80%	86%	100%	100%	63%	50%	86%	0%



	Feb	Mar	Apr	May	Jun	Jul	Aug	Sep	Oct	Nov	Dec	Jan
# Patient	2	2	4	1	5	7	2	4	8	2	7	2
# Graft in use	0	0	0	1	0	0	0	0	0	0	0	0
% Graft in use	0%	0%	0%	100%	0%	0%	0%	0%	0%	0%	0%	0%

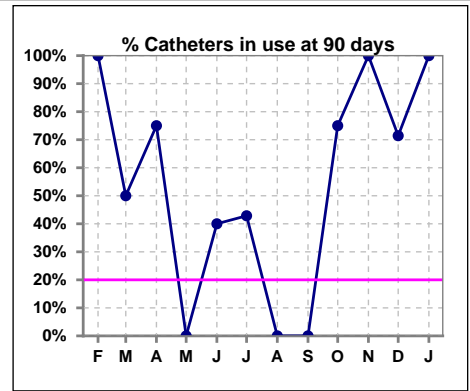


	Feb	Mar	Apr	May	Jun	Jul	Aug	Sep	Oct	Nov	Dec	Jan
# Patient	2	2	4	1	5	7	2	4	8	2	7	2
# Graft in Place	0	0	0	1	0	0	0	0	0	0	0	0
% Graft in Place	0%	0%	0%	100%	0%	0%	0%	0%	0%	0%	0%	0%

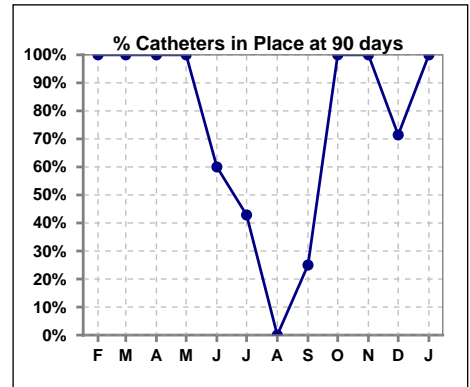


**IV. ACCESS - CONT. Access at 90 days for those patients that reached 90 days within the month.**

	Feb	Mar	Apr	May	Jun	Jul	Aug	Sep	Oct	Nov	Dec	Jan
# Patient	2	2	4	1	5	7	2	4	8	2	7	2
# Catheters in use	2	1	3	0	2	3	0	0	6	2	5	2
% Catheters in use	100%	50%	75%	0%	40%	43%	0%	0%	75%	100%	71%	100%

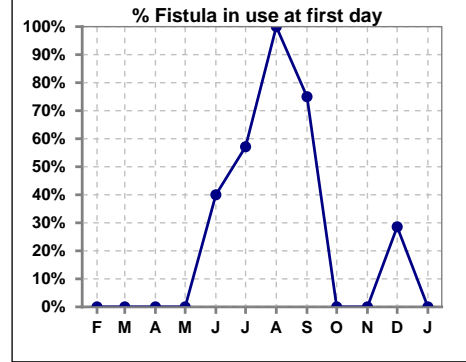


	Feb	Mar	Apr	May	Jun	Jul	Aug	Sep	Oct	Nov	Dec	Jan
# Patient	2	2	4	1	5	7	2	4	8	2	7	2
# Catheters in Place	2	2	4	1	3	3	0	1	8	2	5	2
% Catheters in Place	100%	100%	100%	100%	60%	43%	0%	25%	100%	100%	71%	100%

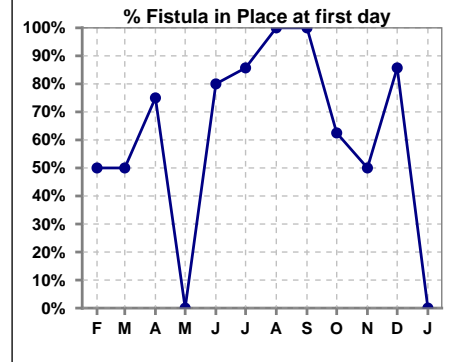


**IV. ACCESS - CONT. Access at first day for those patients that reached 90 days within the month.**

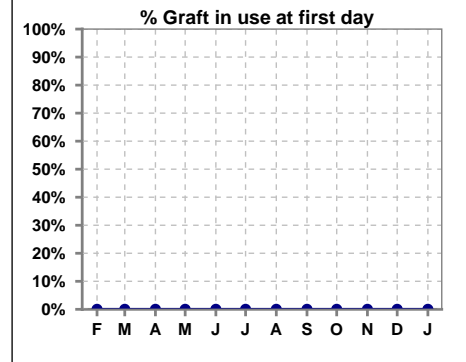
	Feb	Mar	Apr	May	Jun	Jul	Aug	Sep	Oct	Nov	Dec	Jan
# Patient	2	2	4	1	5	7	2	4	8	2	7	2
# Fistula in use	0	0	0	0	2	4	2	3	0	0	2	0
% Fistula in use	0%	0%	0%	0%	40%	57%	100%	75%	0%	0%	29%	0%



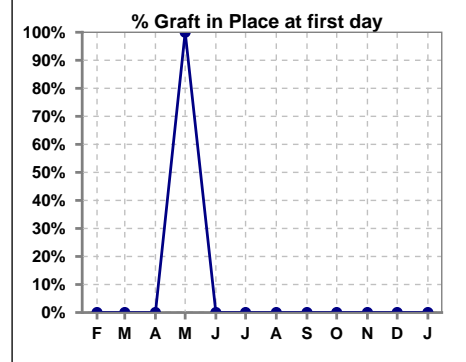
	Feb	Mar	Apr	May	Jun	Jul	Aug	Sep	Oct	Nov	Dec	Jan
# Patient	2	2	4	1	5	7	2	4	8	2	7	2
# Fistula in Place	1	1	3	0	4	6	2	4	5	1	6	0
% Fistula in Place	50%	50%	75%	0%	80%	86%	100%	100%	63%	50%	86%	0%



	Feb	Mar	Apr	May	Jun	Jul	Aug	Sep	Oct	Nov	Dec	Jan
# Patient	2	2	4	1	5	7	2	4	8	2	7	2
# Graft in use	0	0	0	0	0	0	0	0	0	0	0	0
% Graft in use	0%	0%	0%	0%	0%	0%	0%	0%	0%	0%	0%	0%

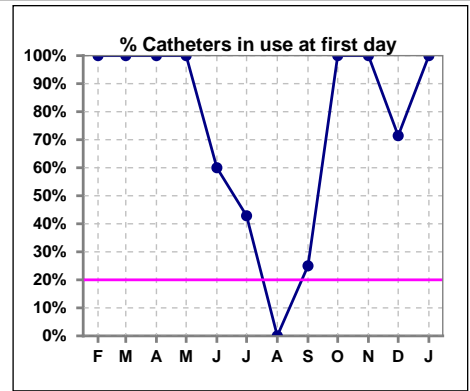


	Feb	Mar	Apr	May	Jun	Jul	Aug	Sep	Oct	Nov	Dec	Jan
# Patient	2	2	4	1	5	7	2	4	8	2	7	2
# Graft in Place	0	0	0	1	0	0	0	0	0	0	0	0
% Graft in Place	0%	0%	0%	100%	0%	0%	0%	0%	0%	0%	0%	0%

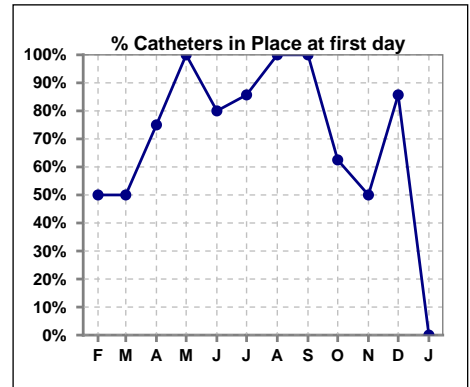


**IV. ACCESS - CONT. Access at first day for those patients that reached 90 days within the month.**

	Feb	Mar	Apr	May	Jun	Jul	Aug	Sep	Oct	Nov	Dec	Jan
# Patient	2	2	4	1	5	7	2	4	8	2	7	2
# Catheters in use	2	2	4	1	3	3	0	1	8	2	5	2
% Catheters in use	100%	100%	100%	100%	60%	43%	0%	25%	100%	100%	71%	100%



	Feb	Mar	Apr	May	Jun	Jul	Aug	Sep	Oct	Nov	Dec	Jan
# Patient	2	2	4	1	5	7	2	4	8	2	7	2
# Catheters in Place	1	1	3	1	4	6	2	4	5	1	6	0
% Catheters in Place	50%	50%	75%	100%	80%	86%	100%	100%	63%	50%	86%	0%

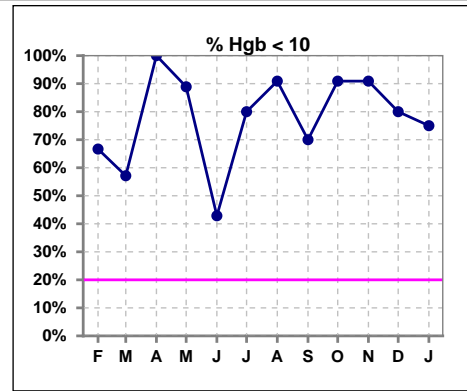




## V. ANEMIA

	Feb	Mar	Apr	May	Jun	Jul	Aug	Sep	Oct	Nov	Dec	Jan
# Hgb	6	7	7	9	7	5	11	10	11	11	10	8
# Hgb <= 10	4	4	7	8	3	4	10	7	10	10	8	6
Pop. Mean	9.7	9.3	8.8	9.1	9.7	9.1	8.5	9.5	9.0	8.8	9.0	8.9
Std. Deviation	1.2	1.6	0.6	0.9	1.4	2.0	1.3	1.1	0.8	1.0	1.0	1.6
% Hgb <= 10	67%	57%	100%	89%	43%	80%	91%	70%	91%	91%	80%	75%

Note: Excludes patients who received no ESA in month.



	Feb	Mar	Apr	May	Jun	Jul	Aug	Sep	Oct	Nov	Dec	Jan
# Hgb	6	7	7	9	7	5	11	10	11	11	10	8
# Hgb >= 12	0	0	0	0	0	0	0	0	0	0	0	0
Pop. Mean	9.7	9.3	8.8	9.1	9.7	9.1	8.5	9.5	9.0	8.8	9.0	8.9
Std. Deviation	1.2	1.6	0.6	0.9	1.4	2.0	1.3	1.1	0.8	1.0	1.0	1.6
% Hgb >= 12	0%	0%	0%	0%	0%	0%	0%	0%	0%	0%	0%	0%

Note: Excludes patients who received no ESA in month.

