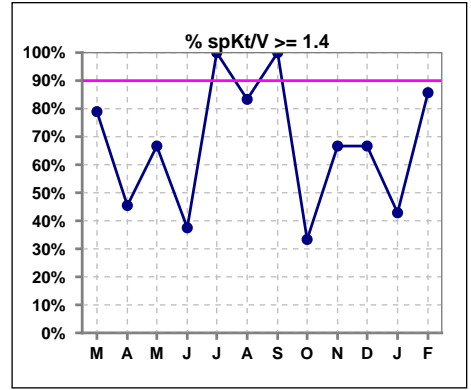
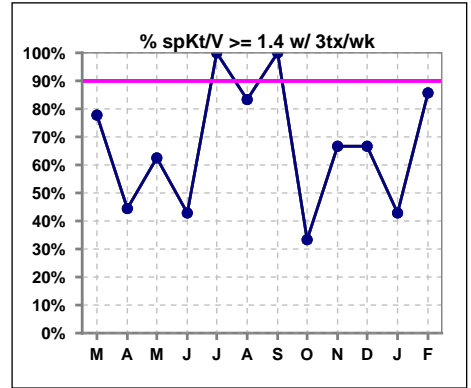


**I. ADEQUACY OF DIALYSIS**

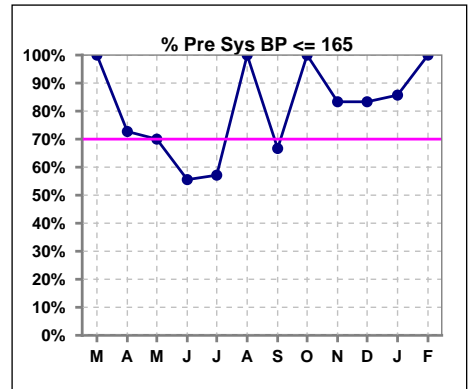
	Mar	Apr	May	Jun	Jul	Aug	Sep	Oct	Nov	Dec	Jan	Feb
# spKt/V	19	11	9	8	7	6	3	6	6	6	7	7
# spKt/V >= 1.4	15	5	6	3	7	5	3	2	4	4	3	6
Pop. Mean	1.58	1.43	1.42	1.46	1.68	1.56	1.72	1.40	1.51	1.58	1.53	1.77
Std. Deviation	0.25	0.33	0.35	0.29	0.23	0.28	0.19	0.42	0.29	0.41	0.30	0.33
% spKt/V >= 1.4	79%	45%	67%	38%	100%	83%	100%	33%	67%	67%	43%	86%
% spKt/V >= 1.2	95%	91%	78%	88%	100%	100%	100%	67%	83%	100%	100%	100%



	Mar	Apr	May	Jun	Jul	Aug	Sep	Oct	Nov	Dec	Jan	Feb
# spKt/V w/ 3tx/wk	18	9	8	7	5	6	3	6	6	6	7	7
# spKt/V >= 1.4 w/3tx/wk	14	4	5	3	5	5	3	2	4	4	3	6
Pop. Mean	1.57	1.40	1.41	1.51	1.59	1.56	1.72	1.40	1.51	1.58	1.53	1.77
Std. Deviation	0.25	0.33	0.37	0.28	0.22	0.28	0.19	0.42	0.29	0.41	0.30	0.33
% spKt/V >= 1.4 w/3tx/wk	78%	44%	63%	43%	100%	83%	100%	33%	67%	67%	43%	86%



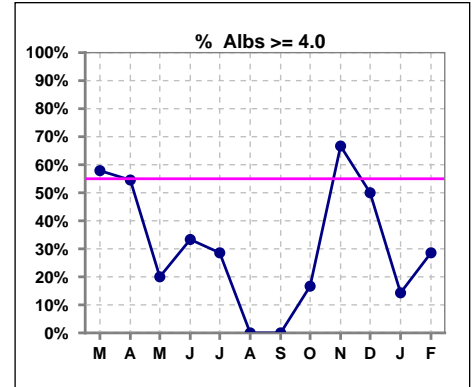
	Mar	Apr	May	Jun	Jul	Aug	Sep	Oct	Nov	Dec	Jan	Feb
# Pre Sys BP	19	11	10	9	7	6	3	6	6	6	7	7
# Pre Sys BP <= 165	19	9	7	5	4	6	2	6	5	5	6	7
Pop. Mean	140	146	151	155	156	139	162	136	146	150	145	130
Std. Deviation	14.6	18.2	23.2	22.5	25.9	16.2	21.8	19.3	17.5	17.7	22.2	20.0
% Pre Sys BP <= 165	100%	73%	70%	56%	57%	100%	67%	100%	83%	83%	86%	100%



\*Albumin values use BCG method - as of July 2001

**II. NUTRITION**

	Mar	Apr	May	Jun	Jul	Aug	Sep	Oct	Nov	Dec	Jan	Feb
# Albumin	19	11	10	9	7	6	3	6	6	6	7	7
# Albumin >= 4.0	11	6	2	3	2	0	0	1	4	3	1	2
Pop. Mean	3.9	4.0	3.7	3.5	3.4	3.5	3.7	3.6	3.8	3.9	3.5	3.6
Std. Deviation	0.30	0.27	0.26	0.54	0.51	0.22	0.17	0.35	0.52	0.35	0.51	0.53
% Alb >= 4.0	58%	55%	20%	33%	29%	0%	0%	17%	67%	50%	14%	29%

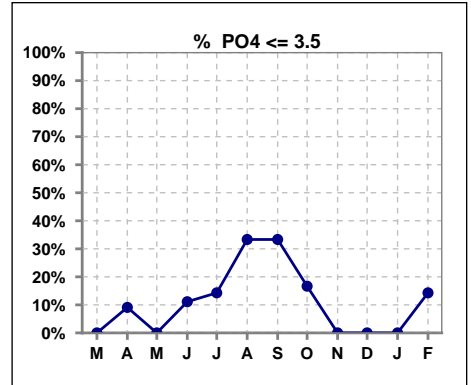


Methodology: a) All labs for 'Adequacy of Dialysis', 'Nutrition', 'Osteodystrophy', 'Anemia' and 'Diabetes' based on last value of month; b) BP's and #L processed are average of all values for month; c) Access data takes last access of month; d) Values for SGA and 'Infection Control' use most recent result.

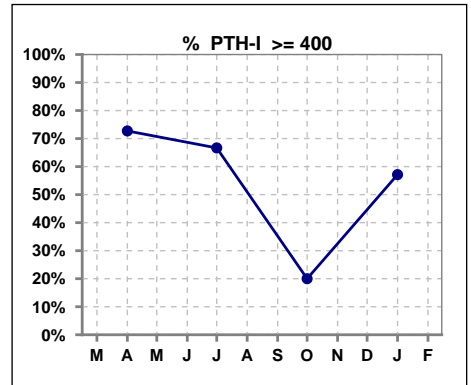
Lab methodology for PTH changed January 2012

**III. OSTEODYSTROPHY**

	Mar	Apr	May	Jun	Jul	Aug	Sep	Oct	Nov	Dec	Jan	Feb
# PO4	19	11	10	9	7	6	3	6	6	6	7	7
# PO4 <= 3.5	0	1	0	1	1	2	1	1	0	0	0	1
Pop. Mean	6.1	6.0	5.6	5.6	5.0	4.9	4.6	5.3	5.6	5.0	5.9	6.8
Std. Deviation	2.01	2.23	1.23	2.44	1.37	1.74	1.10	1.38	1.28	0.90	1.39	2.89
% PO4 <= 3.5	0%	9%	0%	11%	14%	33%	33%	17%	0%	0%	0%	14%



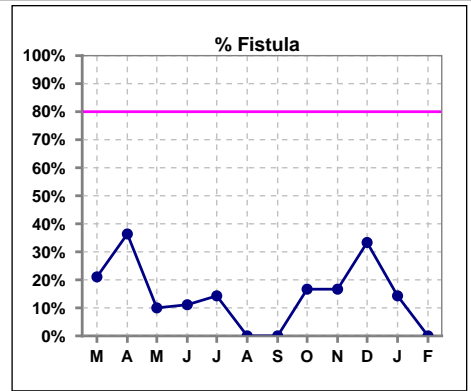
	Mar	Apr	May	Jun	Jul	Aug	Sep	Oct	Nov	Dec	Jan	Feb
# PTH-I		11			3			5			7	
# PTH-I >= 400		8			2			1			4	
Pop. Mean		512			567			294			454	
Std. Deviation		258			305			263			303	
% PTH-I >= 400		73%			67%			20%			57%	



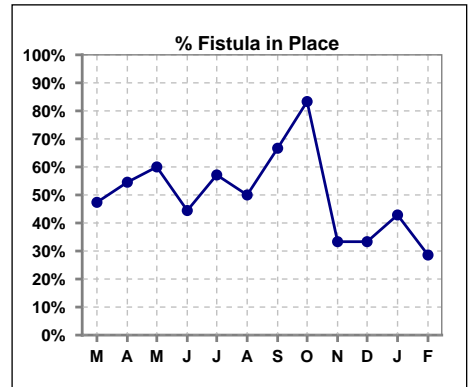
Methodology: a) All labs for 'Adequacy of Dialysis', 'Nutrition', 'Osteodystrophy', 'Anemia' and 'Diabetes' based on last value of month; b) BP's and #L processed are average of all values for month; c) Access data takes last access of month; d) Values for SGA and 'Infection Control' use most recent result.

**IV. ACCESS**

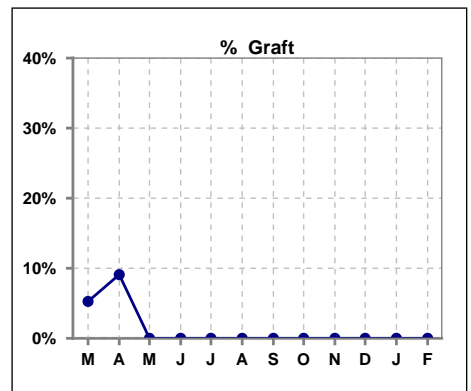
	Mar	Apr	May	Jun	Jul	Aug	Sep	Oct	Nov	Dec	Jan	Feb
# Access	19	11	10	9	7	6	3	6	6	6	7	7
# Fistula	4	4	1	1	1	0	0	1	1	2	1	0
<b>% Fistula</b>	<b>21%</b>	<b>36%</b>	<b>10%</b>	<b>11%</b>	<b>14%</b>	<b>0%</b>	<b>0%</b>	<b>17%</b>	<b>17%</b>	<b>33%</b>	<b>14%</b>	<b>0%</b>



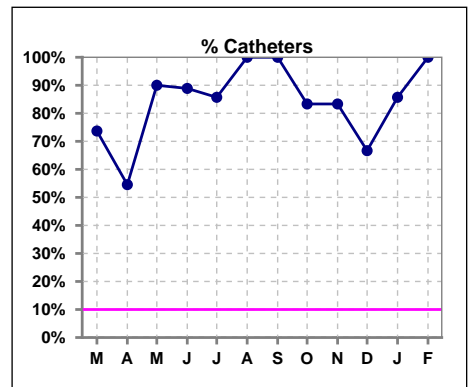
	Mar	Apr	May	Jun	Jul	Aug	Sep	Oct	Nov	Dec	Jan	Feb
# Patient	19	11	10	9	7	6	3	6	6	6	7	7
# Fistula in Place	9	6	6	4	4	3	2	5	2	2	3	2
<b>% Fistula in Place</b>	<b>47%</b>	<b>55%</b>	<b>60%</b>	<b>44%</b>	<b>57%</b>	<b>50%</b>	<b>67%</b>	<b>83%</b>	<b>33%</b>	<b>33%</b>	<b>43%</b>	<b>29%</b>



	Mar	Apr	May	Jun	Jul	Aug	Sep	Oct	Nov	Dec	Jan	Feb
# Access	19	11	10	9	7	6	3	6	6	6	7	7
# Graft	1	1	0	0	0	0	0	0	0	0	0	0
<b>% Graft</b>	<b>5%</b>	<b>9%</b>	<b>0%</b>	<b>0%</b>	<b>0%</b>	<b>0%</b>	<b>0%</b>	<b>0%</b>	<b>0%</b>	<b>0%</b>	<b>0%</b>	<b>0%</b>

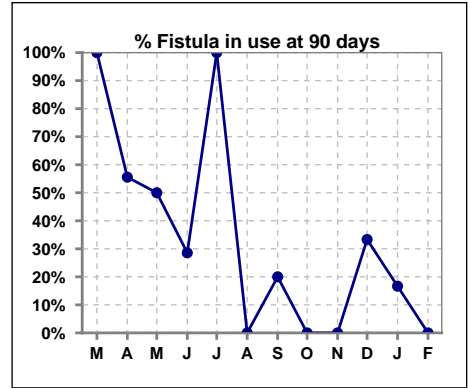


	Mar	Apr	May	Jun	Jul	Aug	Sep	Oct	Nov	Dec	Jan	Feb
# Access	19	11	10	9	7	6	3	6	6	6	7	7
# Catheters	14	6	9	8	6	6	3	5	5	4	6	7
<b>% Catheters</b>	<b>74%</b>	<b>55%</b>	<b>90%</b>	<b>89%</b>	<b>86%</b>	<b>100%</b>	<b>100%</b>	<b>83%</b>	<b>83%</b>	<b>67%</b>	<b>86%</b>	<b>100%</b>

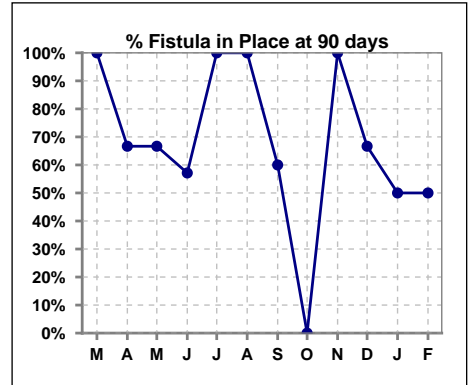


**IV. ACCESS - CONT. Access at 90 days for those patients that reached 90 days within the month.**

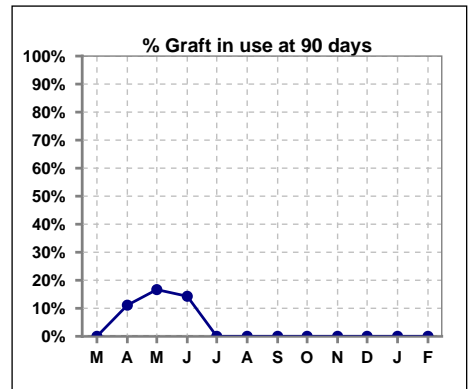
	Mar	Apr	May	Jun	Jul	Aug	Sep	Oct	Nov	Dec	Jan	Feb
# Patient	2	9	6	7	1	3	5	0	1	3	6	2
# Fistula in use	2	5	3	2	1	0	1	0	0	1	1	0
<b>% Fistula in use</b>	<b>100%</b>	<b>56%</b>	<b>50%</b>	<b>29%</b>	<b>100%</b>	<b>0%</b>	<b>20%</b>	<b>0%</b>	<b>0%</b>	<b>33%</b>	<b>17%</b>	<b>0%</b>



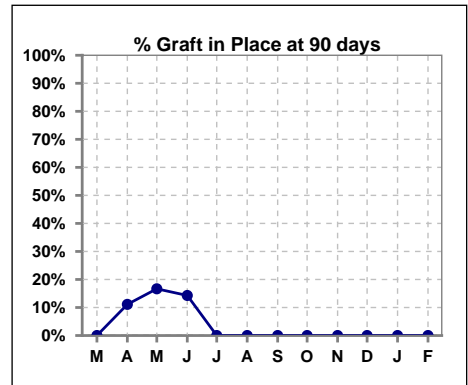
	Mar	Apr	May	Jun	Jul	Aug	Sep	Oct	Nov	Dec	Jan	Feb
# Patient	2	9	6	7	1	3	5	0	1	3	6	2
# Fistula in Place	2	6	4	4	1	3	3	0	1	2	3	1
<b>% Fistula in Place</b>	<b>100%</b>	<b>67%</b>	<b>67%</b>	<b>57%</b>	<b>100%</b>	<b>100%</b>	<b>60%</b>	<b>0%</b>	<b>100%</b>	<b>67%</b>	<b>50%</b>	<b>50%</b>



	Mar	Apr	May	Jun	Jul	Aug	Sep	Oct	Nov	Dec	Jan	Feb
# Patient	2	9	6	7	1	3	5	0	1	3	6	2
# Graft in use	0	1	1	1	0	0	0	0	0	0	0	0
<b>% Graft in use</b>	<b>0%</b>	<b>11%</b>	<b>17%</b>	<b>14%</b>	<b>0%</b>	<b>0%</b>	<b>0%</b>	<b>0%</b>	<b>0%</b>	<b>0%</b>	<b>0%</b>	<b>0%</b>



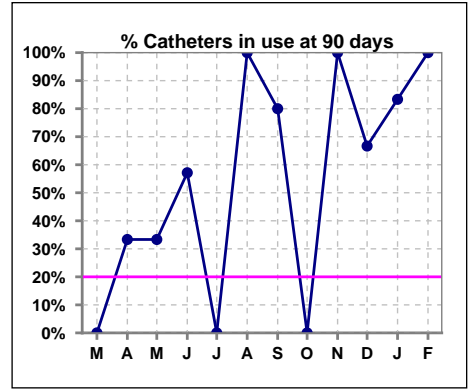
	Mar	Apr	May	Jun	Jul	Aug	Sep	Oct	Nov	Dec	Jan	Feb
# Patient	2	9	6	7	1	3	5	0	1	3	6	2
# Graft in Place	0	1	1	1	0	0	0	0	0	0	0	0
<b>% Graft in Place</b>	<b>0%</b>	<b>11%</b>	<b>17%</b>	<b>14%</b>	<b>0%</b>	<b>0%</b>	<b>0%</b>	<b>0%</b>	<b>0%</b>	<b>0%</b>	<b>0%</b>	<b>0%</b>



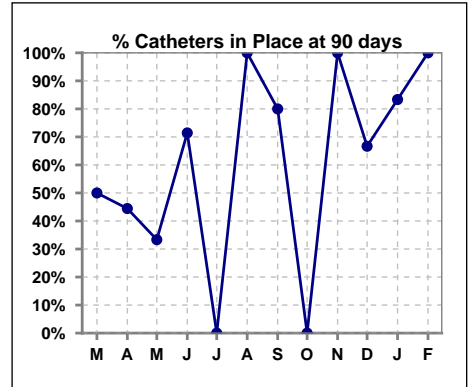
Methodology: a) All labs for 'Adequacy of Dialysis', 'Nutrition', 'Osteodystrophy', 'Anemia' and 'Diabetes' based on last value of month; b) BP's and #L processed are average of all values for month; c) Access data takes last access of month; d) Values for SGA and 'Infection Control' use most recent result.

**IV. ACCESS - CONT. Access at 90 days for those patients that reached 90 days within the month.**

	Mar	Apr	May	Jun	Jul	Aug	Sep	Oct	Nov	Dec	Jan	Feb
# Patient	2	9	6	7	1	3	5	0	1	3	6	2
# Catheters in use	0	3	2	4	0	3	4	0	1	2	5	2
% Catheters in use	0%	33%	33%	57%	0%	100%	80%	0%	100%	67%	83%	100%



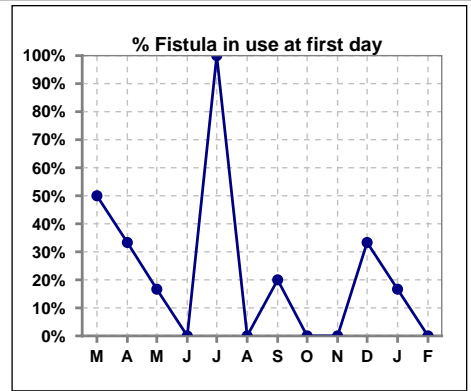
	Mar	Apr	May	Jun	Jul	Aug	Sep	Oct	Nov	Dec	Jan	Feb
# Patient	2	9	6	7	1	3	5	0	1	3	6	2
# Catheters in Place	1	4	2	5	0	3	4	0	1	2	5	2
% Catheters in Place	50%	44%	33%	71%	0%	100%	80%	0%	100%	67%	83%	100%



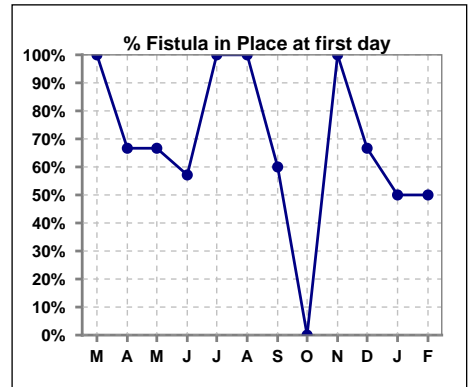
Methodology: a) All labs for 'Adequacy of Dialysis', 'Nutrition', 'Osteodystrophy', 'Anemia' and 'Diabetes' based on last value of month; b) BP's and #L processed are average of all values for month; c) Access data takes last access of month; d) Values for SGA and 'Infection Control' use most recent result.

**IV. ACCESS - CONT. Access at first day for those patients that reached 90 days within the month.**

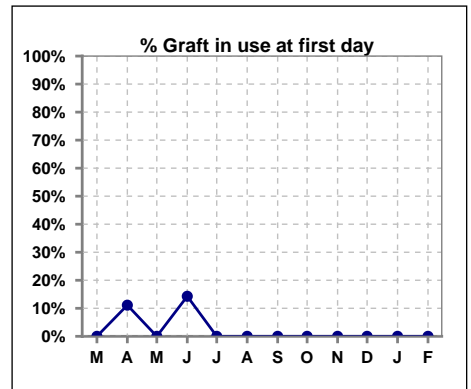
	Mar	Apr	May	Jun	Jul	Aug	Sep	Oct	Nov	Dec	Jan	Feb
# Patient	2	9	6	7	1	3	5	0	1	3	6	2
# Fistula in use	1	3	1	0	1	0	1	0	0	1	1	0
<b>% Fistula in use</b>	<b>50%</b>	<b>33%</b>	<b>17%</b>	<b>0%</b>	<b>100%</b>	<b>0%</b>	<b>20%</b>	<b>0%</b>	<b>0%</b>	<b>33%</b>	<b>17%</b>	<b>0%</b>



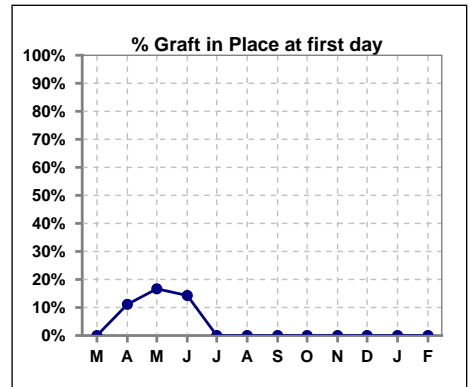
	Mar	Apr	May	Jun	Jul	Aug	Sep	Oct	Nov	Dec	Jan	Feb
# Patient	2	9	6	7	1	3	5	0	1	3	6	2
# Fistula in Place	2	6	4	4	1	3	3	0	1	2	3	1
<b>% Fistula in Place</b>	<b>100%</b>	<b>67%</b>	<b>67%</b>	<b>57%</b>	<b>100%</b>	<b>100%</b>	<b>60%</b>	<b>0%</b>	<b>100%</b>	<b>67%</b>	<b>50%</b>	<b>50%</b>



	Mar	Apr	May	Jun	Jul	Aug	Sep	Oct	Nov	Dec	Jan	Feb
# Patient	2	9	6	7	1	3	5	0	1	3	6	2
# Graft in use	0	1	0	1	0	0	0	0	0	0	0	0
<b>% Graft in use</b>	<b>0%</b>	<b>11%</b>	<b>0%</b>	<b>14%</b>	<b>0%</b>	<b>0%</b>	<b>0%</b>	<b>0%</b>	<b>0%</b>	<b>0%</b>	<b>0%</b>	<b>0%</b>



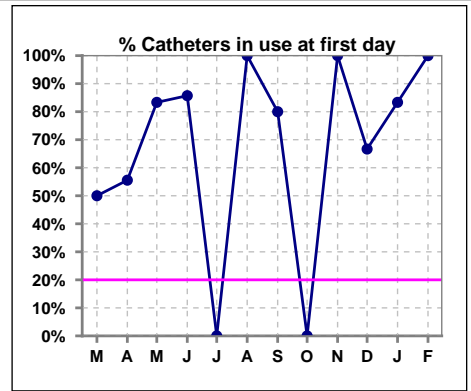
	Mar	Apr	May	Jun	Jul	Aug	Sep	Oct	Nov	Dec	Jan	Feb
# Patient	2	9	6	7	1	3	5	0	1	3	6	2
# Graft in Place	0	1	1	1	0	0	0	0	0	0	0	0
<b>% Graft in Place</b>	<b>0%</b>	<b>11%</b>	<b>17%</b>	<b>14%</b>	<b>0%</b>	<b>0%</b>	<b>0%</b>	<b>0%</b>	<b>0%</b>	<b>0%</b>	<b>0%</b>	<b>0%</b>



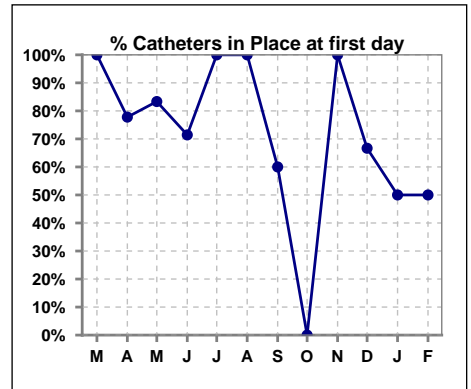
Methodology: a) All labs for 'Adequacy of Dialysis', 'Nutrition', 'Osteodystrophy', 'Anemia' and 'Diabetes' based on last value of month; b) BP's and #L processed are average of all values for month; c) Access data takes last access of month; d) Values for SGA and 'Infection Control' use most recent result.

**IV. ACCESS - CONT. Access at first day for those patients that reached 90 days within the month.**

	Mar	Apr	May	Jun	Jul	Aug	Sep	Oct	Nov	Dec	Jan	Feb
# Patient	2	9	6	7	1	3	5	0	1	3	6	2
# Catheters in use	1	5	5	6	0	3	4	0	1	2	5	2
% Catheters in use	50%	56%	83%	86%	0%	100%	80%	0%	100%	67%	83%	100%



	Mar	Apr	May	Jun	Jul	Aug	Sep	Oct	Nov	Dec	Jan	Feb
# Patient	2	9	6	7	1	3	5	0	1	3	6	2
# Catheters in Place	2	7	5	5	1	3	3	0	1	2	3	1
% Catheters in Place	100%	78%	83%	71%	100%	100%	60%	0%	100%	67%	50%	50%



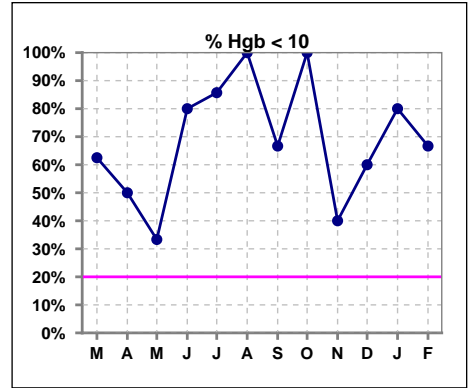
Methodology: a) All labs for 'Adequacy of Dialysis', 'Nutrition', 'Osteodystrophy', 'Anemia' and 'Diabetes' based on last value of month; b) BP's and #L processed are average of all values for month; c) Access data takes last access of month; d) Values for SGA and 'Infection Control' use most recent result.



**V. ANEMIA**

	Mar	Apr	May	Jun	Jul	Aug	Sep	Oct	Nov	Dec	Jan	Feb
# Hgb	16	6	6	5	7	5	3	5	5	5	5	6
# Hgb <= 10	10	3	2	4	6	5	2	5	2	3	4	4
Pop. Mean	9.2	10.1	10.8	8.1	8.5	8.0	9.4	8.8	10.2	10.0	9.0	9.7
Std. Deviation	1.6	1.9	1.7	1.4	1.7	0.4	2.2	0.6	1.3	1.6	1.4	1.2
% Hgb <= 10	63%	50%	33%	80%	86%	100%	67%	100%	40%	60%	80%	67%

Note: Excludes patients who received no ESA in month.



	Mar	Apr	May	Jun	Jul	Aug	Sep	Oct	Nov	Dec	Jan	Feb
# Hgb	16	6	6	5	7	5	3	5	5	5	5	6
# Hgb >= 12	0	1	1	0	0	0	0	0	0	1	0	0
Pop. Mean	9.2	10.1	10.8	8.1	8.5	8.0	9.4	8.8	10.2	10.0	9.0	9.7
Std. Deviation	1.6	1.9	1.7	1.4	1.7	0.4	2.2	0.6	1.3	1.6	1.4	1.2
% Hgb >= 12	0%	17%	17%	0%	0%	0%	0%	0%	0%	20%	0%	0%

Note: Excludes patients who received no ESA in month.

