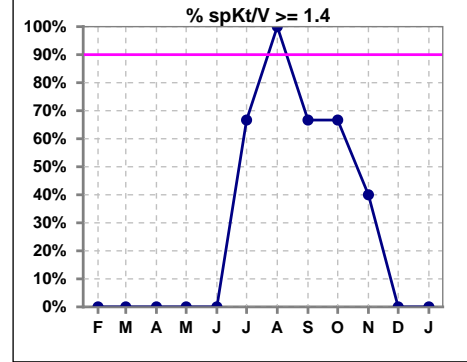


Snoqualmie Ridge Kidney Center - Center Hemodialysis
 Quality Assurance Reports (Patients in first 90 days of treatment)
 Through period ending Jan. 31, 2026

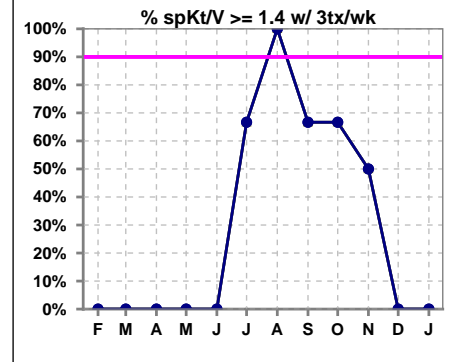
1

I. ADEQUACY OF DIALYSIS

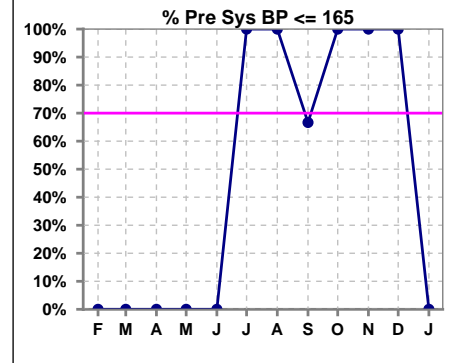
	Feb	Mar	Apr	May	Jun	Jul	Aug	Sep	Oct	Nov	Dec	Jan
# spKt/V	0	0	0	0	0	3	1	3	3	5	1	0
# spKt/V >= 1.4	0	0	0	0	0	2	1	2	2	2	0	0
Pop. Mean	0	0	0	0	0	1.38	1.86	1.51	1.60	1.38	1.15	0
Std. Deviation	0	0	0	0	0	0.25	0	0.46	0.26	0.61	0	0
% spKt/V >= 1.4	0%	0%	0%	0%	0%	67%	100%	67%	67%	40%	0%	0%
% spKt/V >= 1.2	0%	0%	0%	0%	0%	67%	100%	67%	100%	60%	0%	0%



	Feb	Mar	Apr	May	Jun	Jul	Aug	Sep	Oct	Nov	Dec	Jan
# spKt/V w/ 3tx/wk	0	0	0	0	0	3	1	3	3	4	1	0
# spKt/V >= 1.4 w/3tx/wk	0	0	0	0	0	2	1	2	2	2	0	0
Pop. Mean	0	0	0	0	0	1.38	1.86	1.51	1.60	1.49	1.15	0
Std. Deviation	0	0	0	0	0	0.25	0	0.46	0.26	0.65	0	0
% spKt/V >= 1.4 w/3tx/wk	0%	0%	0%	0%	0%	67%	100%	67%	67%	50%	0%	0%



	Feb	Mar	Apr	May	Jun	Jul	Aug	Sep	Oct	Nov	Dec	Jan
# Pre Sys BP	0	0	0	0	0	3	1	3	3	5	1	0
# Pre Sys BP <= 165	0	0	0	0	0	3	1	2	3	5	1	0
Pop. Mean	0	0	0	0	0	140	154	157	152	145	126	0
Std. Deviation	0	0	0	0	0	1.7	0	9.5	3.8	13.9	0	0
% Pre Sys BP <= 165	0%	0%	0%	0%	0%	100%	100%	67%	100%	100%	100%	0%



Methodology: a) All labs for 'Adequacy of Dialysis', 'Nutrition', 'Osteodystrophy', 'Anemia' and 'Diabetes' based on last value of month; b) BP's and #L processed are average of all values for month; c) Access data takes last access of month; d) Values for SGA and 'Infection Control' use most recent result.

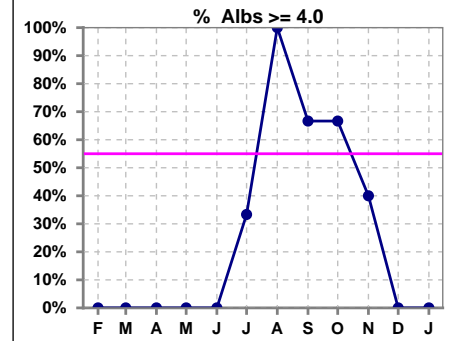
Snoqualmie Ridge Kidney Center - Center Hemodialysis
 Quality Assurance Reports (Patients in first 90 days of treatment)
 Through period ending Jan. 31, 2026

2

*Albumin values use BCG method - as of July 2001

II. NUTRITION

	Feb	Mar	Apr	May	Jun	Jul	Aug	Sep	Oct	Nov	Dec	Jan
# Albumin	0	0	0	0	0	3	1	3	3	5	1	0
# Albumin >= 4.0	0	0	0	0	0	1	1	2	2	2	0	0
Pop. Mean	0	0	0	0	0	3.6	4.3	4.1	3.9	3.7	3.7	0
Std. Deviation	0	0	0	0	0	0.44	0	0.76	0.78	0.61	0	0
% Alb >= 4.0	0%	0%	0%	0%	0%	33%	100%	67%	67%	40%	0%	0%

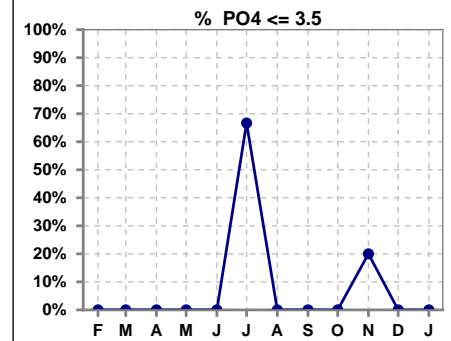


Methodology: a) All labs for 'Adequacy of Dialysis', 'Nutrition', 'Osteodystrophy', 'Anemia' and 'Diabetes' based on last value of month; b) BP's and #L processed are average of all values for month; c) Access data takes last access of month; d) Values for SGA and 'Infection Control' use most recent result.

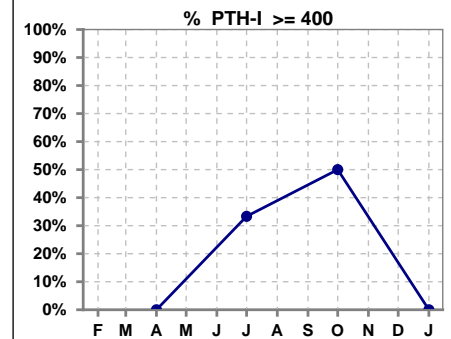
Lab methodology for PTH changed January 2012

III. OSTEODYSTROPHY

	Feb	Mar	Apr	May	Jun	Jul	Aug	Sep	Oct	Nov	Dec	Jan
# PO4	0	0	0	0	0	3	1	3	3	5	1	0
# PO4 <= 3.5	0	0	0	0	0	2	0	0	0	1	0	0
Pop. Mean	0	0	0	0	0	4.6	4.6	5.3	6.1	4.7	3.7	0
Std. Deviation	0	0	0	0	0	2.19	0	0.70	1.14	1.60	0	0
% PO4 <= 3.5	0%	0%	0%	0%	0%	67%	0%	0%	0%	20%	0%	0%



	Feb	Mar	Apr	May	Jun	Jul	Aug	Sep	Oct	Nov	Dec	Jan
# PTH-I			0			3			2			0
# PTH-I >= 400			0			1			1			0
Pop. Mean			0			325			387			0
Std. Deviation			0			226			116			0
% PTH-I >= 400			0%			33%			50%			0%

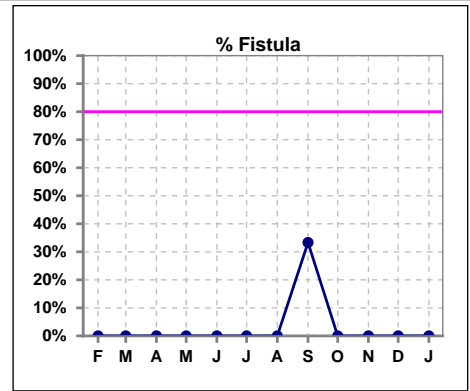


Snoqualmie Ridge Kidney Center - Center Hemodialysis
Quality Assurance Reports (Patients in first 90 days of treatment)
 Through period ending Jan. 31, 2026

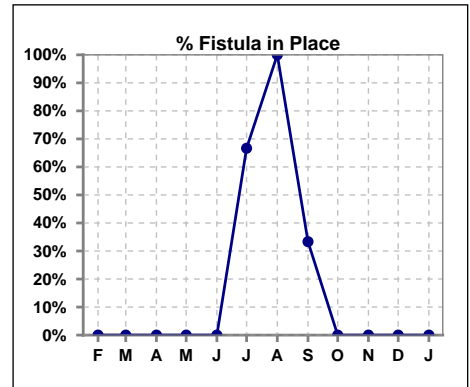
4

IV. ACCESS

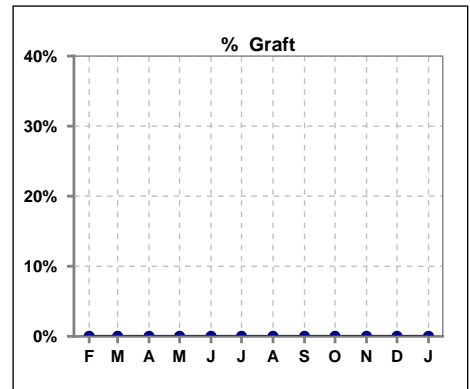
	Feb	Mar	Apr	May	Jun	Jul	Aug	Sep	Oct	Nov	Dec	Jan
# Access	0	0	0	0	0	3	1	3	3	5	1	0
# Fistula	0	0	0	0	0	0	0	1	0	0	0	0
% Fistula	0%	0%	0%	0%	0%	0%	0%	33%	0%	0%	0%	0%



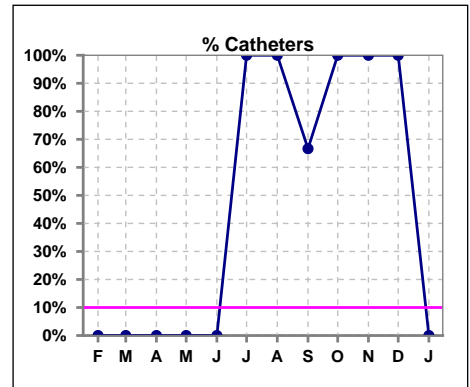
	Feb	Mar	Apr	May	Jun	Jul	Aug	Sep	Oct	Nov	Dec	Jan
# Patient	0	0	0	0	0	3	1	3	3	5	1	0
# Fistula in Place	0	0	0	0	0	2	1	1	0	0	0	0
% Fistula in Place	0%	0%	0%	0%	0%	67%	100%	33%	0%	0%	0%	0%



	Feb	Mar	Apr	May	Jun	Jul	Aug	Sep	Oct	Nov	Dec	Jan
# Access	0	0	0	0	0	3	1	3	3	5	1	0
# Graft	0	0	0	0	0	0	0	0	0	0	0	0
% Graft	0%	0%	0%	0%	0%	0%	0%	0%	0%	0%	0%	0%



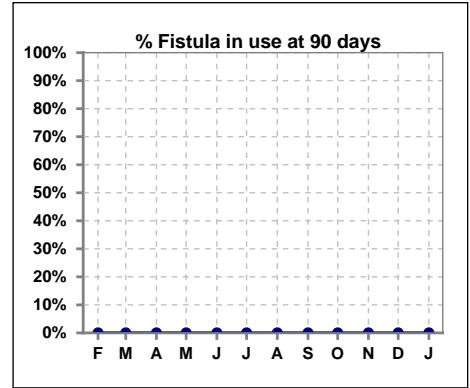
	Feb	Mar	Apr	May	Jun	Jul	Aug	Sep	Oct	Nov	Dec	Jan
# Access	0	0	0	0	0	3	1	3	3	5	1	0
# Catheters	0	0	0	0	0	3	1	2	3	5	1	0
% Catheters	0%	0%	0%	0%	0%	100%	100%	67%	100%	100%	100%	0%



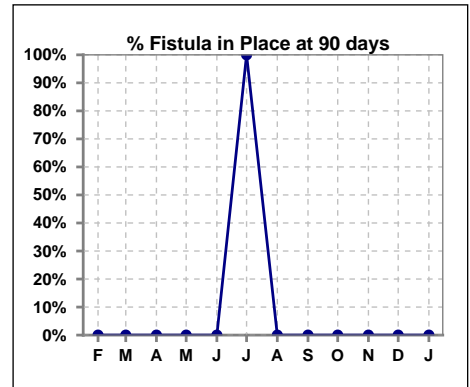
Methodology: a) All labs for 'Adequacy of Dialysis', 'Nutrition', 'Osteodystrophy', 'Anemia' and 'Diabetes' based on last value of month; b) BP's and #L processed are average of all values for month; c) Access data takes last access of month; d) Values for SGA and 'Infection Control' use most recent result.

IV. ACCESS - CONT. Access at 90 days for those patients that reached 90 days within the month.

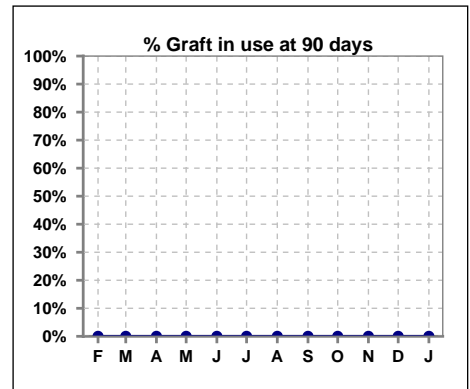
	Feb	Mar	Apr	May	Jun	Jul	Aug	Sep	Oct	Nov	Dec	Jan
# Patient	0	0	0	0	0	1	0	1	0	1	1	0
# Fistula in use	0	0	0	0	0	0	0	0	0	0	0	0
% Fistula in use	0%	0%	0%	0%	0%	0%	0%	0%	0%	0%	0%	0%



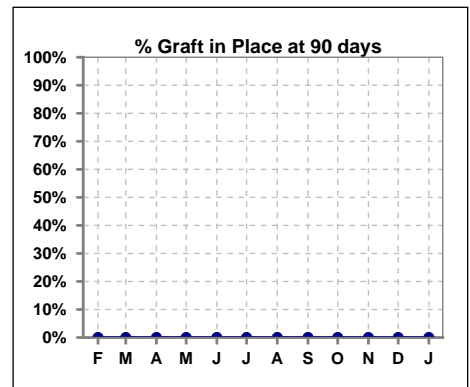
	Feb	Mar	Apr	May	Jun	Jul	Aug	Sep	Oct	Nov	Dec	Jan
# Patient	0	0	0	0	0	1	0	1	0	1	1	0
# Fistula in Place	0	0	0	0	0	1	0	0	0	0	0	0
% Fistula in Place	0%	0%	0%	0%	0%	100%	0%	0%	0%	0%	0%	0%



	Feb	Mar	Apr	May	Jun	Jul	Aug	Sep	Oct	Nov	Dec	Jan
# Patient	0	0	0	0	0	1	0	1	0	1	1	0
# Graft in use	0	0	0	0	0	0	0	0	0	0	0	0
% Graft in use	0%	0%	0%	0%	0%	0%	0%	0%	0%	0%	0%	0%

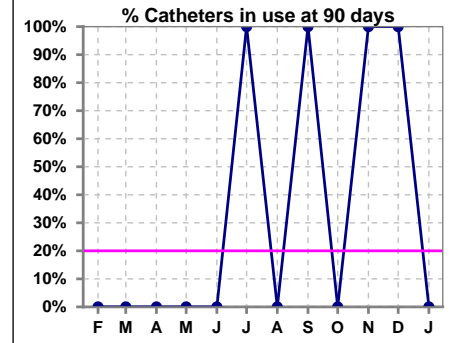


	Feb	Mar	Apr	May	Jun	Jul	Aug	Sep	Oct	Nov	Dec	Jan
# Patient	0	0	0	0	0	1	0	1	0	1	1	0
# Graft in Place	0	0	0	0	0	0	0	0	0	0	0	0
% Graft in Place	0%	0%	0%	0%	0%	0%	0%	0%	0%	0%	0%	0%

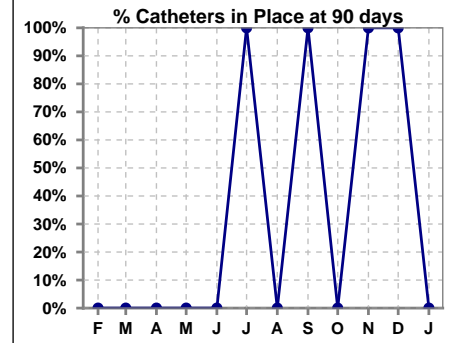


IV. ACCESS - CONT. Access at 90 days for those patients that reached 90 days within the month.

	Feb	Mar	Apr	May	Jun	Jul	Aug	Sep	Oct	Nov	Dec	Jan
# Patient	0	0	0	0	0	1	0	1	0	1	1	0
# Catheters in use	0	0	0	0	0	1	0	1	0	1	1	0
% Catheters in use	0%	0%	0%	0%	0%	100%	0%	100%	0%	100%	100%	0%

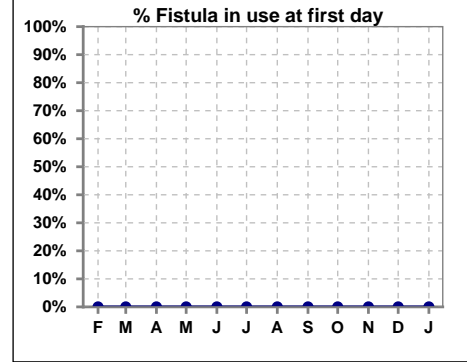


	Feb	Mar	Apr	May	Jun	Jul	Aug	Sep	Oct	Nov	Dec	Jan
# Patient	0	0	0	0	0	1	0	1	0	1	1	0
# Catheters in Place	0	0	0	0	0	1	0	1	0	1	1	0
% Catheters in Place	0%	0%	0%	0%	0%	100%	0%	100%	0%	100%	100%	0%

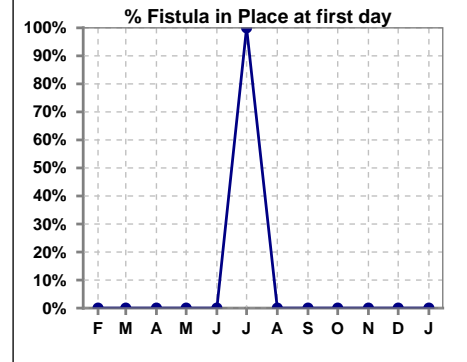


IV. ACCESS - CONT. Access at first day for those patients that reached 90 days within the month.

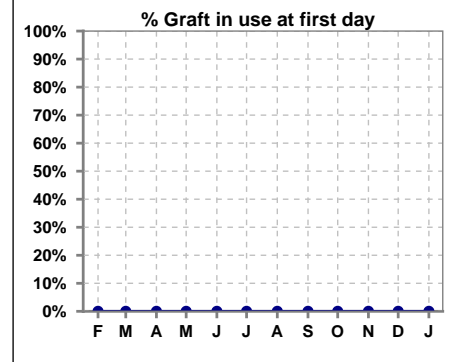
	Feb	Mar	Apr	May	Jun	Jul	Aug	Sep	Oct	Nov	Dec	Jan
# Patient	0	0	0	0	0	1	0	1	0	1	1	0
# Fistula in use	0	0	0	0	0	0	0	0	0	0	0	0
% Fistula in use	0%	0%	0%	0%	0%	0%	0%	0%	0%	0%	0%	0%



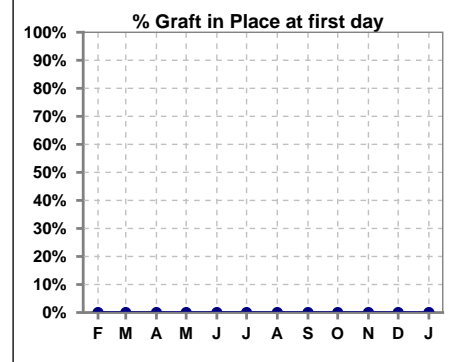
	Feb	Mar	Apr	May	Jun	Jul	Aug	Sep	Oct	Nov	Dec	Jan
# Patient	0	0	0	0	0	1	0	1	0	1	1	0
# Fistula in Place	0	0	0	0	0	1	0	0	0	0	0	0
% Fistula in Place	0%	0%	0%	0%	0%	100%	0%	0%	0%	0%	0%	0%



	Feb	Mar	Apr	May	Jun	Jul	Aug	Sep	Oct	Nov	Dec	Jan
# Patient	0	0	0	0	0	1	0	1	0	1	1	0
# Graft in use	0	0	0	0	0	0	0	0	0	0	0	0
% Graft in use	0%	0%	0%	0%	0%	0%	0%	0%	0%	0%	0%	0%



	Feb	Mar	Apr	May	Jun	Jul	Aug	Sep	Oct	Nov	Dec	Jan
# Patient	0	0	0	0	0	1	0	1	0	1	1	0
# Graft in Place	0	0	0	0	0	0	0	0	0	0	0	0
% Graft in Place	0%	0%	0%	0%	0%	0%	0%	0%	0%	0%	0%	0%

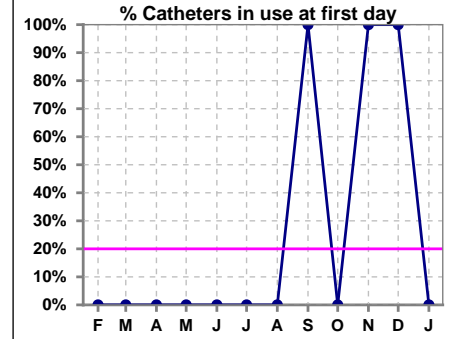


Snoqualmie Ridge Kidney Center - Center Hemodialysis
Quality Assurance Reports (Patients in first 90 days of treatment)
 Through period ending Jan. 31, 2026

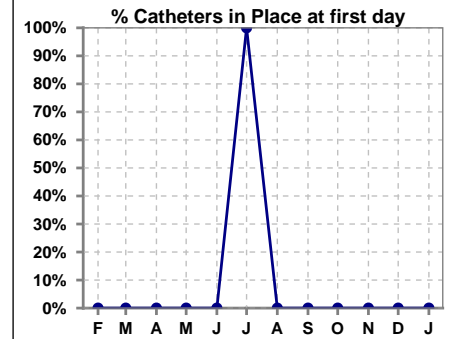
8

IV. ACCESS - CONT. Access at first day for those patients that reached 90 days within the month.

	Feb	Mar	Apr	May	Jun	Jul	Aug	Sep	Oct	Nov	Dec	Jan
# Patient	0	0	0	0	0	1	0	1	0	1	1	0
# Catheters in use	0	0	0	0	0	0	0	1	0	1	1	0
% Catheters in use	0%	0%	0%	0%	0%	0%	0%	100%	0%	100%	100%	0%



	Feb	Mar	Apr	May	Jun	Jul	Aug	Sep	Oct	Nov	Dec	Jan
# Patient	0	0	0	0	0	1	0	1	0	1	1	0
# Catheters in Place	0	0	0	0	0	1	0	0	0	0	0	0
% Catheters in Place	0%	0%	0%	0%	0%	100%	0%	0%	0%	0%	0%	0%



Methodology: a) All labs for 'Adequacy of Dialysis', 'Nutrition', 'Osteodystrophy', 'Anemia' and 'Diabetes' based on last value of month; b) BP's and #L processed are average of all values for month; c) Access data takes last access of month; d) Values for SGA and 'Infection Control' use most recent result.

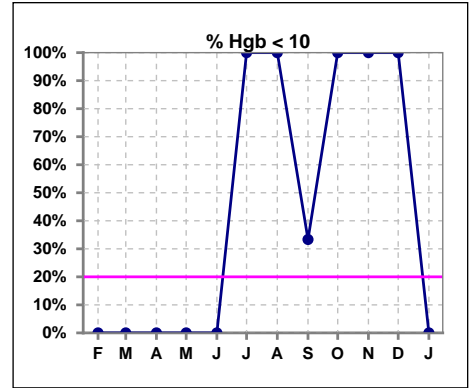
Snoqualmie Ridge Kidney Center - Center Hemodialysis
Quality Assurance Reports (Patients in first 90 days of treatment)
 Through period ending Jan. 31, 2026

9

V. ANEMIA

	Feb	Mar	Apr	May	Jun	Jul	Aug	Sep	Oct	Nov	Dec	Jan
# Hgb	0	0	0	0	0	3	1	3	3	4	1	0
# Hgb <= 10	0	0	0	0	0	3	1	1	3	4	1	0
Pop. Mean	0	0	0	0	0	8.4	8.8	10.3	8.3	8.6	8.8	0
Std. Deviation	0	0	0	0	0	0.8	0	0.5	0.8	1.2	0	0
% Hgb <= 10	0%	0%	0%	0%	0%	100%	100%	33%	100%	100%	100%	0%

Note: Excludes patients who received no ESA in month.



	Feb	Mar	Apr	May	Jun	Jul	Aug	Sep	Oct	Nov	Dec	Jan
# Hgb	0	0	0	0	0	3	1	3	3	4	1	0
# Hgb >= 12	0	0	0	0	0	0	0	0	0	0	0	0
Pop. Mean	0	0	0	0	0	8.4	8.8	10.3	8.3	8.6	8.8	0
Std. Deviation	0	0	0	0	0	0.8	0	0.5	0.8	1.2	0	0
% Hgb >= 12	0%	0%	0%	0%	0%	0%	0%	0%	0%	0%	0%	0%

Note: Excludes patients who received no ESA in month.

