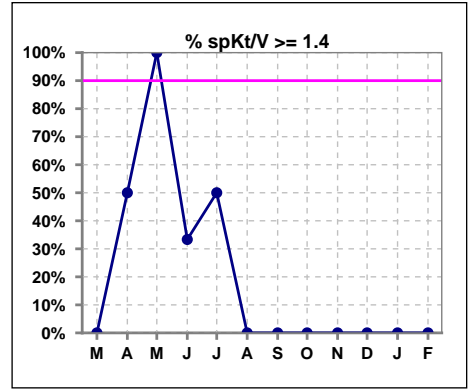
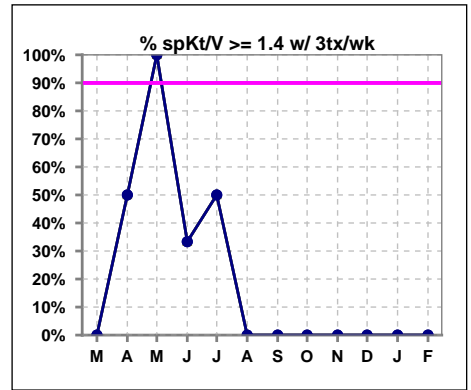


**I. ADEQUACY OF DIALYSIS**

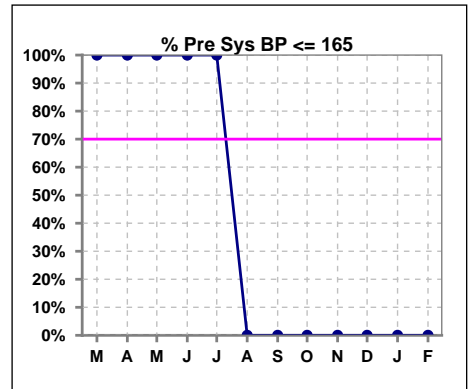
	Mar	Apr	May	Jun	Jul	Aug	Sep	Oct	Nov	Dec	Jan	Feb
# spKt/V	2	2	2	3	2	0	0	0	0	0	0	0
# spKt/V >= 1.4	0	1	2	1	1	0	0	0	0	0	0	0
Pop. Mean	1.19	1.28	1.49	1.35	1.32	0	0	0	0	0	0	0
Std. Deviation	0.23	0.17	0.10	0.50	0.67	0	0	0	0	0	0	0
<b>% spKt/V &gt;= 1.4</b>	0%	50%	100%	33%	50%	0%	0%	0%	0%	0%	0%	0%
<b>% spKt/V &gt;= 1.2</b>	50%	50%	100%	67%	50%	0%	0%	0%	0%	0%	0%	0%



	Mar	Apr	May	Jun	Jul	Aug	Sep	Oct	Nov	Dec	Jan	Feb
# spKt/V w/ 3tx/wk	2	2	2	3	2	0	0	0	0	0	0	0
# spKt/V >= 1.4 w/3tx/wk	0	1	2	1	1	0	0	0	0	0	0	0
Pop. Mean	1.19	1.28	1.49	1.35	1.32	0	0	0	0	0	0	0
Std. Deviation	0.23	0.18	0.10	0.50	0.67	0	0	0	0	0	0	0
<b>% spKt/V &gt;= 1.4 w/3tx/wk</b>	0%	50%	100%	33%	50%	0%	0%	0%	0%	0%	0%	0%



	Mar	Apr	May	Jun	Jul	Aug	Sep	Oct	Nov	Dec	Jan	Feb
# Pre Sys BP	2	2	2	3	2	0	0	0	0	0	0	0
# Pre Sys BP <= 165	2	2	2	3	2	0	0	0	0	0	0	0
Pop. Mean	141	137	139	153	147	0	0	0	0	0	0	0
Std. Deviation	13.4	4.2	9.9	9.5	17.7	0	0	0	0	0	0	0
<b>% Pre Sys BP &lt;= 165</b>	100%	100%	100%	100%	100%	0%	0%	0%	0%	0%	0%	0%

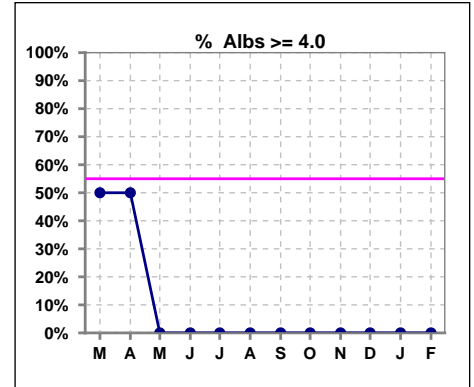


Methodology: a) All labs for 'Adequacy of Dialysis', 'Nutrition', 'Osteodystrophy', 'Anemia' and 'Diabetes' based on last value of month; b) BP's and #L processed are average of all values for month; c) Access data takes last access of month; d) Values for SGA and 'Infection Control' use most recent result.

\*Albumin values use BCG method - as of July 2001

**II. NUTRITION**

	Mar	Apr	May	Jun	Jul	Aug	Sep	Oct	Nov	Dec	Jan	Feb
# Albumin	2	2	2	3	2	0	0	0	0	0	0	0
# Albumin >= 4.0	1	1	0	0	0	0	0	0	0	0	0	0
Pop. Mean	3.5	3.8	3.7	3.5	3.5	0	0	0	0	0	0	0
Std. Deviation	0.85	0.85	0.07	0.15	0.07	0	0	0	0	0	0	0
% Alb >= 4.0	50%	50%	0%	0%	0%	0%	0%	0%	0%	0%	0%	0%

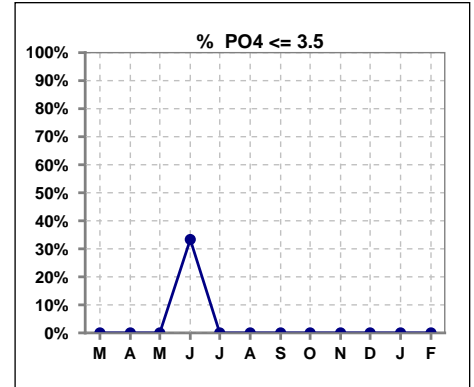


Methodology: a) All labs for 'Adequacy of Dialysis', 'Nutrition', 'Osteodystrophy', 'Anemia' and 'Diabetes' based on last value of month; b) BP's and #L processed are average of all values for month; c) Access data takes last access of month; d) Values for SGA and 'Infection Control' use most recent result.

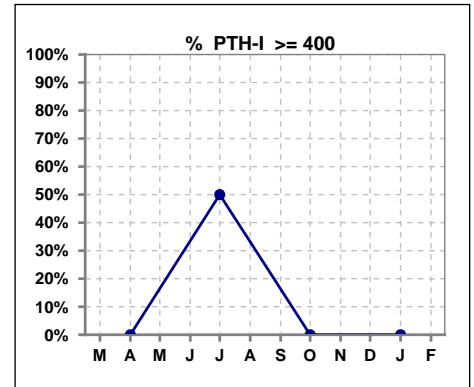
Lab methodology for PTH changed January 2012

**III. OSTEODYSTROPHY**

	Mar	Apr	May	Jun	Jul	Aug	Sep	Oct	Nov	Dec	Jan	Feb
# PO4	2	2	2	3	2	0	0	0	0	0	0	0
# PO4 <= 3.5	0	0	0	1	0	0	0	0	0	0	0	0
Pop. Mean	6.0	5.8	4.3	5.1	6.1	0	0	0	0	0	0	0
Std. Deviation	2.76	1.91	0.64	2.06	2.76	0	0	0	0	0	0	0
<b>% PO4 &lt;= 3.5</b>	0%	0%	0%	33%	0%	0%	0%	0%	0%	0%	0%	0%



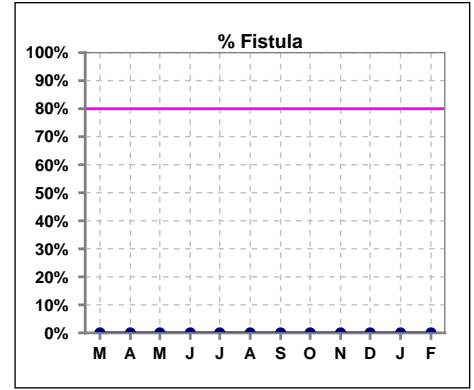
	Mar	Apr	May	Jun	Jul	Aug	Sep	Oct	Nov	Dec	Jan	Feb
# PTH-I		2			2			0			0	
# PTH-I >= 400		0			1			0			0	
Pop. Mean		370			557			0			0	
Std. Deviation		41			368			0			0	
<b>% PTH-I &gt;= 400</b>		0%			50%			0%			0%	



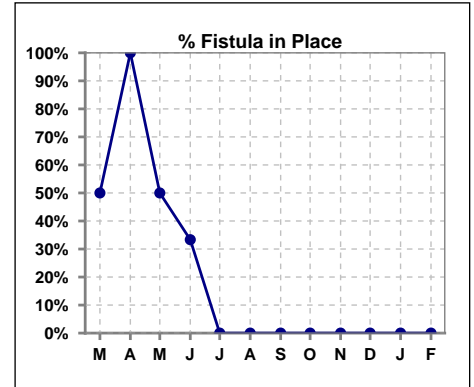
Methodology: a) All labs for 'Adequacy of Dialysis', 'Nutrition', 'Osteodystrophy', 'Anemia' and 'Diabetes' based on last value of month; b) BP's and #L processed are average of all values for month; c) Access data takes last access of month; d) Values for SGA and 'Infection Control' use most recent result.

**IV. ACCESS**

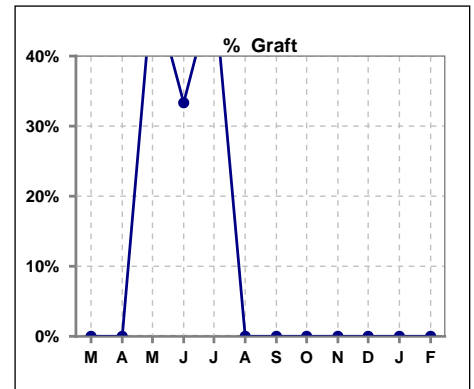
	Mar	Apr	May	Jun	Jul	Aug	Sep	Oct	Nov	Dec	Jan	Feb
# Access	2	2	2	3	2	0	0	0	0	0	0	0
# Fistula	0	0	0	0	0	0	0	0	0	0	0	0
<b>% Fistula</b>	0%	0%	0%	0%	0%	0%	0%	0%	0%	0%	0%	0%



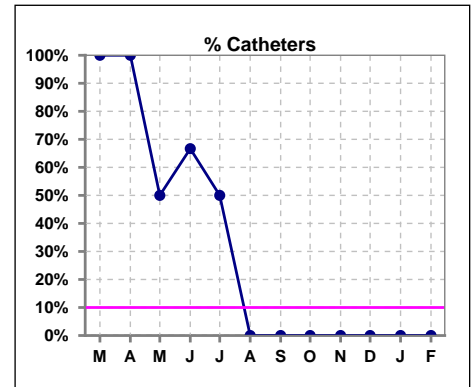
	Mar	Apr	May	Jun	Jul	Aug	Sep	Oct	Nov	Dec	Jan	Feb
# Patient	2	2	2	3	2	0	0	0	0	0	0	0
# Fistula in Place	1	2	1	1	0	0	0	0	0	0	0	0
<b>% Fistula in Place</b>	50%	100%	50%	33%	0%	0%	0%	0%	0%	0%	0%	0%



	Mar	Apr	May	Jun	Jul	Aug	Sep	Oct	Nov	Dec	Jan	Feb
# Access	2	2	2	3	2	0	0	0	0	0	0	0
# Graft	0	0	1	1	1	0	0	0	0	0	0	0
<b>% Graft</b>	0%	0%	50%	33%	50%	0%	0%	0%	0%	0%	0%	0%



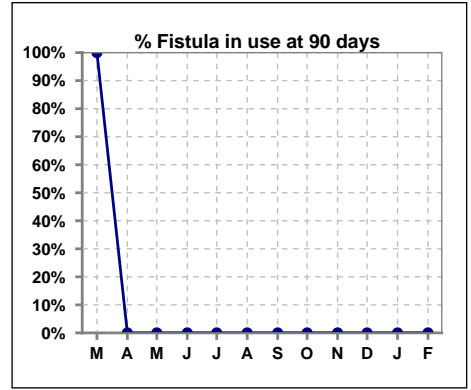
	Mar	Apr	May	Jun	Jul	Aug	Sep	Oct	Nov	Dec	Jan	Feb
# Access	2	2	2	3	2	0	0	0	0	0	0	0
# Catheters	2	2	1	2	1	0	0	0	0	0	0	0
<b>% Catheters</b>	100%	100%	50%	67%	50%	0%	0%	0%	0%	0%	0%	0%



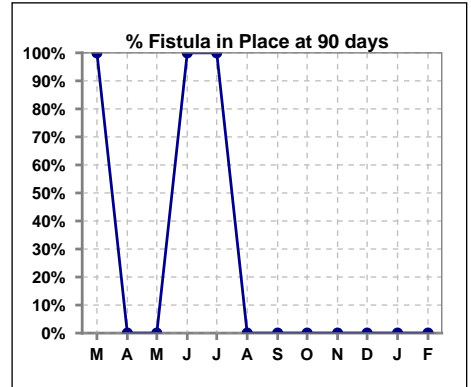
Methodology: a) All labs for 'Adequacy of Dialysis', 'Nutrition', 'Osteodystrophy', 'Anemia' and 'Diabetes' based on last value of month; b) BP's and #L processed are average of all values for month; c) Access data takes last access of month; d) Values for SGA and 'Infection Control' use most recent result.

**IV. ACCESS - CONT. Access at 90 days for those patients that reached 90 days within the month.**

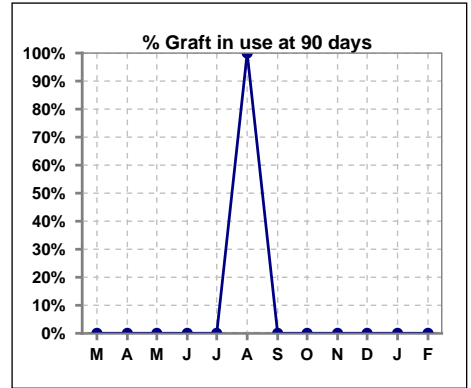
	Mar	Apr	May	Jun	Jul	Aug	Sep	Oct	Nov	Dec	Jan	Feb
# Patient	1	0	0	1	1	1	0	1	0	0	0	0
# Fistula in use	1	0	0	0	0	0	0	0	0	0	0	0
<b>% Fistula in use</b>	<b>100%</b>	<b>0%</b>	<b>0%</b>	<b>0%</b>	<b>0%</b>	<b>0%</b>	<b>0%</b>	<b>0%</b>	<b>0%</b>	<b>0%</b>	<b>0%</b>	<b>0%</b>



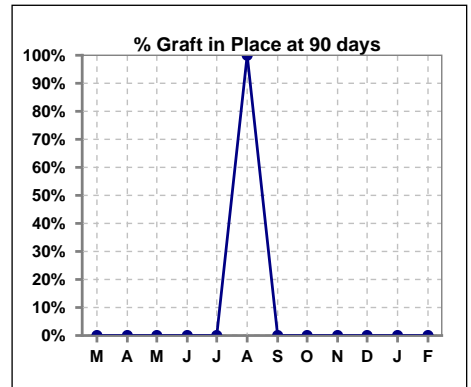
	Mar	Apr	May	Jun	Jul	Aug	Sep	Oct	Nov	Dec	Jan	Feb
# Patient	1	0	0	1	1	1	0	1	0	0	0	0
# Fistula in Place	1	0	0	1	1	0	0	0	0	0	0	0
<b>% Fistula in Place</b>	<b>100%</b>	<b>0%</b>	<b>0%</b>	<b>100%</b>	<b>100%</b>	<b>0%</b>	<b>0%</b>	<b>0%</b>	<b>0%</b>	<b>0%</b>	<b>0%</b>	<b>0%</b>



	Mar	Apr	May	Jun	Jul	Aug	Sep	Oct	Nov	Dec	Jan	Feb
# Patient	1	0	0	1	1	1	0	1	0	0	0	0
# Graft in use	0	0	0	0	0	1	0	0	0	0	0	0
<b>% Graft in use</b>	<b>0%</b>	<b>0%</b>	<b>0%</b>	<b>0%</b>	<b>0%</b>	<b>100%</b>	<b>0%</b>	<b>0%</b>	<b>0%</b>	<b>0%</b>	<b>0%</b>	<b>0%</b>



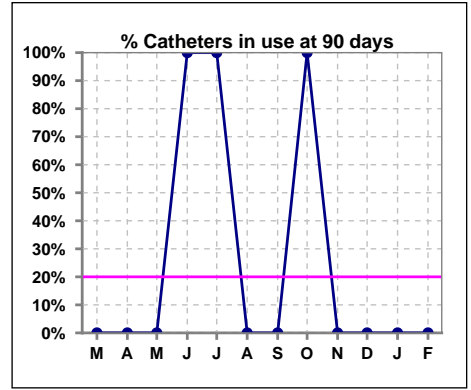
	Mar	Apr	May	Jun	Jul	Aug	Sep	Oct	Nov	Dec	Jan	Feb
# Patient	1	0	0	1	1	1	0	1	0	0	0	0
# Graft in Place	0	0	0	0	0	1	0	0	0	0	0	0
<b>% Graft in Place</b>	<b>0%</b>	<b>0%</b>	<b>0%</b>	<b>0%</b>	<b>0%</b>	<b>100%</b>	<b>0%</b>	<b>0%</b>	<b>0%</b>	<b>0%</b>	<b>0%</b>	<b>0%</b>



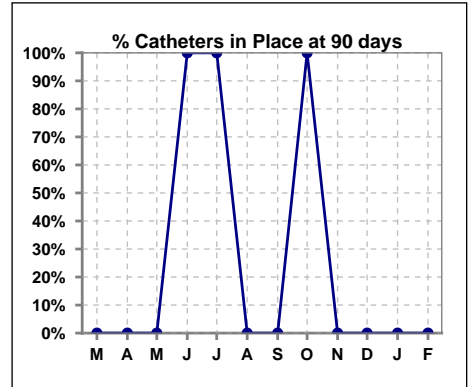
Methodology: a) All labs for 'Adequacy of Dialysis', 'Nutrition', 'Osteodystrophy', 'Anemia' and 'Diabetes' based on last value of month; b) BP's and #L processed are average of all values for month; c) Access data takes last access of month; d) Values for SGA and 'Infection Control' use most recent result.

**IV. ACCESS - CONT. Access at 90 days for those patients that reached 90 days within the month.**

	Mar	Apr	May	Jun	Jul	Aug	Sep	Oct	Nov	Dec	Jan	Feb
# Patient	1	0	0	1	1	1	0	1	0	0	0	0
# Catheters in use	0	0	0	1	1	0	0	1	0	0	0	0
% Catheters in use	0%	0%	0%	100%	100%	0%	0%	100%	0%	0%	0%	0%

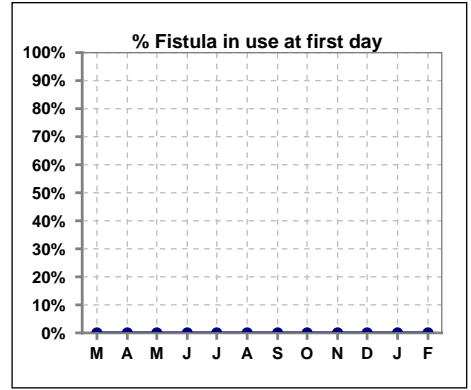


	Mar	Apr	May	Jun	Jul	Aug	Sep	Oct	Nov	Dec	Jan	Feb
# Patient	1	0	0	1	1	1	0	1	0	0	0	0
# Catheters in Place	0	0	0	1	1	0	0	1	0	0	0	0
% Catheters in Place	0%	0%	0%	100%	100%	0%	0%	100%	0%	0%	0%	0%

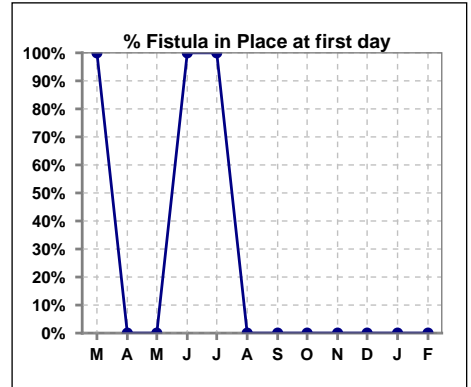


**IV. ACCESS - CONT. Access at first day for those patients that reached 90 days within the month.**

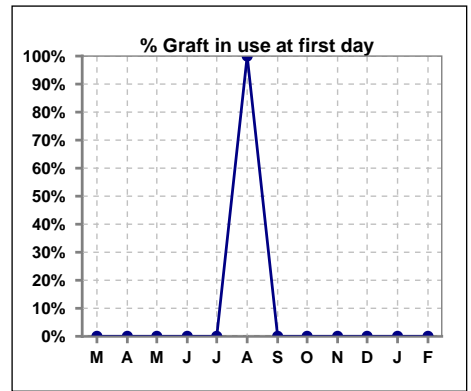
	Mar	Apr	May	Jun	Jul	Aug	Sep	Oct	Nov	Dec	Jan	Feb
# Patient	1	0	0	1	1	1	0	1	0	0	0	0
# Fistula in use	0	0	0	0	0	0	0	0	0	0	0	0
% Fistula in use	0%	0%	0%	0%	0%	0%	0%	0%	0%	0%	0%	0%



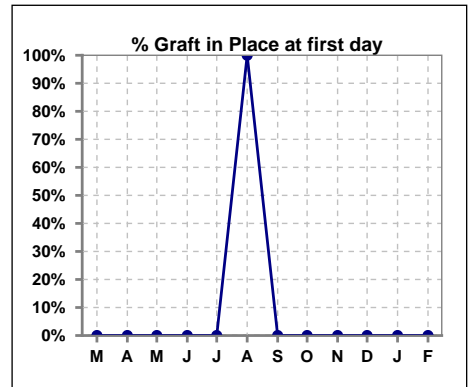
	Mar	Apr	May	Jun	Jul	Aug	Sep	Oct	Nov	Dec	Jan	Feb
# Patient	1	0	0	1	1	1	0	1	0	0	0	0
# Fistula in Place	1	0	0	1	1	0	0	0	0	0	0	0
% Fistula in Place	100%	0%	0%	100%	100%	0%	0%	0%	0%	0%	0%	0%



	Mar	Apr	May	Jun	Jul	Aug	Sep	Oct	Nov	Dec	Jan	Feb
# Patient	1	0	0	1	1	1	0	1	0	0	0	0
# Graft in use	0	0	0	0	0	1	0	0	0	0	0	0
% Graft in use	0%	0%	0%	0%	0%	100%	0%	0%	0%	0%	0%	0%



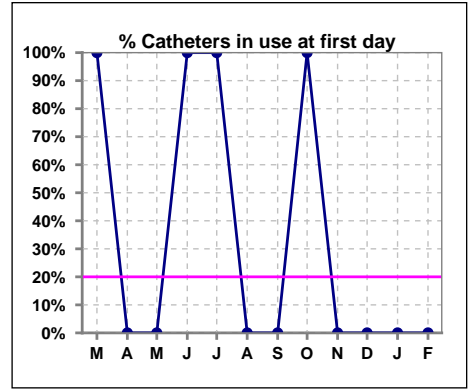
	Mar	Apr	May	Jun	Jul	Aug	Sep	Oct	Nov	Dec	Jan	Feb
# Patient	1	0	0	1	1	1	0	1	0	0	0	0
# Graft in Place	0	0	0	0	0	1	0	0	0	0	0	0
% Graft in Place	0%	0%	0%	0%	0%	100%	0%	0%	0%	0%	0%	0%



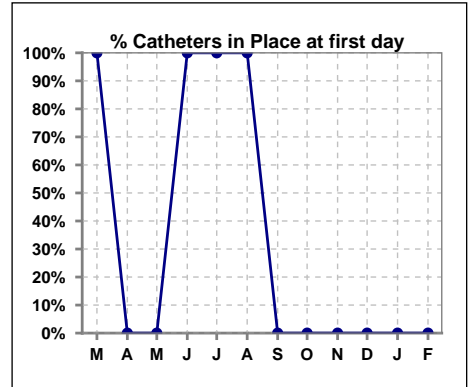
Methodology: a) All labs for 'Adequacy of Dialysis', 'Nutrition', 'Osteodystrophy', 'Anemia' and 'Diabetes' based on last value of month; b) BP's and #L processed are average of all values for month; c) Access data takes last access of month; d) Values for SGA and 'Infection Control' use most recent result.

**IV. ACCESS - CONT. Access at first day for those patients that reached 90 days within the month.**

	Mar	Apr	May	Jun	Jul	Aug	Sep	Oct	Nov	Dec	Jan	Feb
# Patient	1	0	0	1	1	1	0	1	0	0	0	0
# Catheters in use	1	0	0	1	1	0	0	1	0	0	0	0
<b>% Catheters in use</b>	<b>100%</b>	<b>0%</b>	<b>0%</b>	<b>100%</b>	<b>100%</b>	<b>0%</b>	<b>0%</b>	<b>100%</b>	<b>0%</b>	<b>0%</b>	<b>0%</b>	<b>0%</b>



	Mar	Apr	May	Jun	Jul	Aug	Sep	Oct	Nov	Dec	Jan	Feb
# Patient	1	0	0	1	1	1	0	1	0	0	0	0
# Catheters in Place	1	0	0	1	1	1	0	0	0	0	0	0
<b>% Catheters in Place</b>	<b>100%</b>	<b>0%</b>	<b>0%</b>	<b>100%</b>	<b>100%</b>	<b>100%</b>	<b>0%</b>	<b>0%</b>	<b>0%</b>	<b>0%</b>	<b>0%</b>	<b>0%</b>



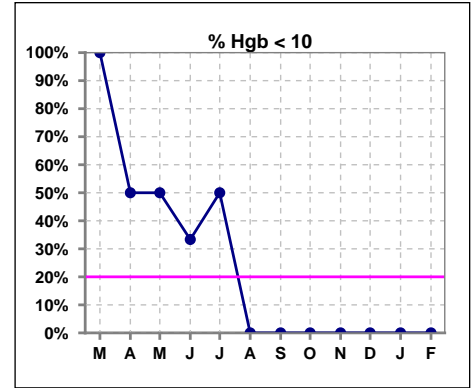
Methodology: a) All labs for 'Adequacy of Dialysis', 'Nutrition', 'Osteodystrophy', 'Anemia' and 'Diabetes' based on last value of month; b) BP's and #L processed are average of all values for month; c) Access data takes last access of month; d) Values for SGA and 'Infection Control' use most recent result.



**V. ANEMIA**

	Mar	Apr	May	Jun	Jul	Aug	Sep	Oct	Nov	Dec	Jan	Feb
# Hgb	2	2	2	3	2	0	0	0	0	0	0	0
# Hgb <= 10	2	1	1	1	1	0	0	0	0	0	0	0
Pop. Mean	8.4	9.4	7.6	10.0	10.2	0	0	0	0	0	0	0
Std. Deviation	0.5	1.1	3.7	1.9	1.6	0	0	0	0	0	0	0
<b>% Hgb &lt;= 10</b>	<b>100%</b>	<b>50%</b>	<b>50%</b>	<b>33%</b>	<b>50%</b>	<b>0%</b>	<b>0%</b>	<b>0%</b>	<b>0%</b>	<b>0%</b>	<b>0%</b>	<b>0%</b>

Note: Excludes patients who received no ESA in month.



	Mar	Apr	May	Jun	Jul	Aug	Sep	Oct	Nov	Dec	Jan	Feb
# Hgb	2	2	2	3	2	0	0	0	0	0	0	0
# Hgb >= 12	0	0	0	0	0	0	0	0	0	0	0	0
Pop. Mean	8.4	9.4	7.6	10.0	10.2	0	0	0	0	0	0	0
Std. Deviation	0.5	1.1	3.7	1.9	1.6	0	0	0	0	0	0	0
<b>% Hgb &gt;= 12</b>	<b>0%</b>	<b>0%</b>	<b>0%</b>	<b>0%</b>	<b>0%</b>	<b>0%</b>	<b>0%</b>	<b>0%</b>	<b>0%</b>	<b>0%</b>	<b>0%</b>	<b>0%</b>

Note: Excludes patients who received no ESA in month.

