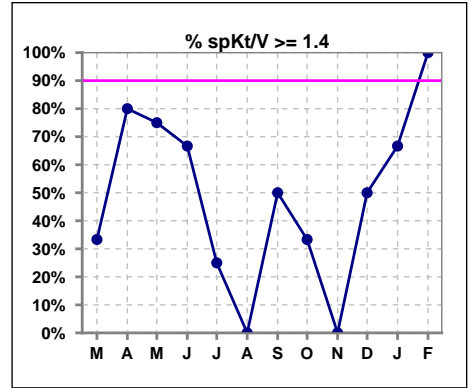
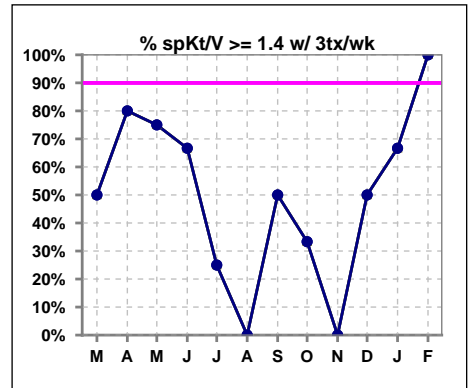


**I. ADEQUACY OF DIALYSIS**

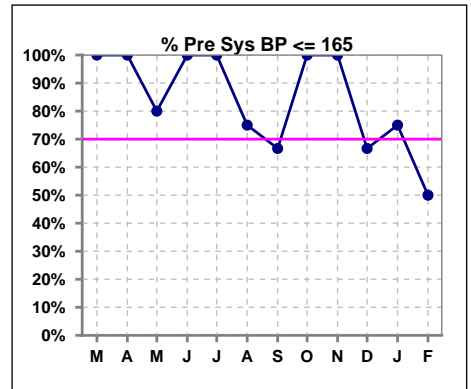
	Mar	Apr	May	Jun	Jul	Aug	Sep	Oct	Nov	Dec	Jan	Feb
# spKt/V	3	5	4	3	4	4	2	3	2	2	3	4
# spKt/V >= 1.4	1	4	3	2	1	0	1	1	0	1	2	4
Pop. Mean	1.35	1.70	1.71	1.74	1.36	1.30	1.35	1.35	1.25	1.58	1.53	1.74
Std. Deviation	0.08	0.42	0.42	0.48	0.17	0.09	0.18	0.10	0.07	0.42	0.29	0.19
% spKt/V >= 1.4	33%	80%	75%	67%	25%	0%	50%	33%	0%	50%	67%	100%
% spKt/V >= 1.2	100%	100%	100%	100%	100%	100%	100%	100%	100%	100%	100%	100%



	Mar	Apr	May	Jun	Jul	Aug	Sep	Oct	Nov	Dec	Jan	Feb
# spKt/V w/ 3tx/wk	2	5	4	3	4	4	2	3	2	2	3	4
# spKt/V >= 1.4 w/3tx/wk	1	4	3	2	1	0	1	1	0	1	2	4
Pop. Mean	1.40	1.70	1.71	1.74	1.36	1.30	1.35	1.35	1.25	1.58	1.53	1.74
Std. Deviation	0.05	0.42	0.42	0.48	0.17	0.09	0.18	0.10	0.07	0.42	0.29	0.19
% spKt/V >= 1.4 w/3tx/wk	50%	80%	75%	67%	25%	0%	50%	33%	0%	50%	67%	100%



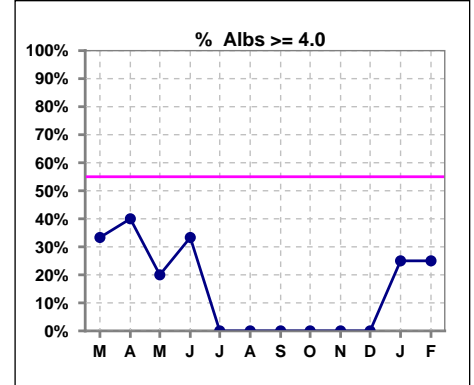
	Mar	Apr	May	Jun	Jul	Aug	Sep	Oct	Nov	Dec	Jan	Feb
# Pre Sys BP	3	5	5	3	4	4	3	3	3	3	4	4
# Pre Sys BP <= 165	3	5	4	3	4	3	2	3	3	2	3	2
Pop. Mean	147	135	143	135	130	138	143	135	140	155	157	161
Std. Deviation	16.4	18.0	24.8	26.5	22.9	29.6	21.5	20.6	18.7	14.6	12.3	9.8
% Pre Sys BP <= 165	100%	100%	80%	100%	100%	75%	67%	100%	100%	67%	75%	50%



\*Albumin values use BCG method - as of July 2001

**II. NUTRITION**

	Mar	Apr	May	Jun	Jul	Aug	Sep	Oct	Nov	Dec	Jan	Feb
# Albumin	3	5	5	3	4	4	3	3	3	3	4	4
# Albumin >= 4.0	1	2	1	1	0	0	0	0	0	0	1	1
Pop. Mean	3.7	3.7	3.4	3.7	3.4	3.3	3.2	3.5	3.5	3.5	3.8	3.6
Std. Deviation	0.60	0.28	0.39	0.40	0.50	0.54	0.29	0.45	0.46	0.55	0.47	0.46
% Alb >= 4.0	33%	40%	20%	33%	0%	0%	0%	0%	0%	0%	25%	25%

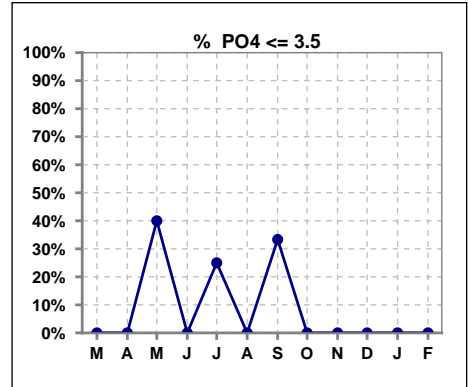


Methodology: a) All labs for 'Adequacy of Dialysis', 'Nutrition', 'Osteodystrophy', 'Anemia' and 'Diabetes' based on last value of month; b) BP's and #L processed are average of all values for month; c) Access data takes last access of month; d) Values for SGA and 'Infection Control' use most recent result.

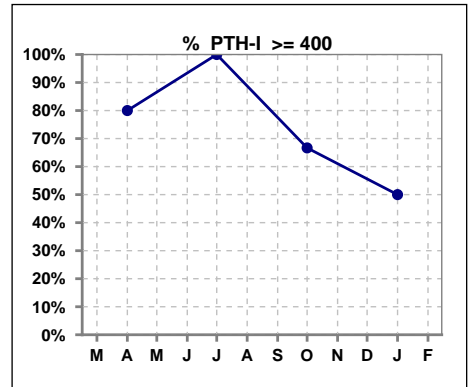
Lab methodology for PTH changed January 2012

**III. OSTEODYSTROPHY**

	Mar	Apr	May	Jun	Jul	Aug	Sep	Oct	Nov	Dec	Jan	Feb
# PO4	3	5	5	3	4	4	3	3	3	3	4	4
# PO4 <= 3.5	0	0	2	0	1	0	1	0	0	0	0	0
Pop. Mean	6.1	6.3	4.9	6.5	5.8	6.8	5.1	6.5	6.2	7.0	6.9	7.1
Std. Deviation	1.36	2.00	2.11	1.90	1.83	1.11	2.03	1.07	0.76	2.50	1.81	1.12
% PO4 <= 3.5	0%	0%	40%	0%	25%	0%	33%	0%	0%	0%	0%	0%



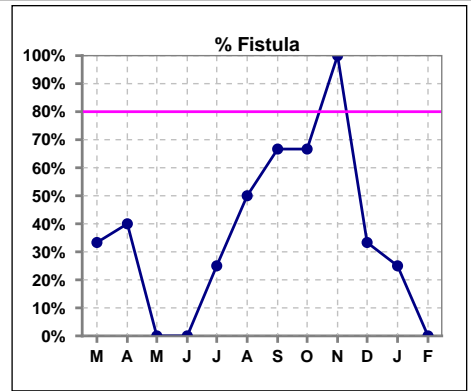
	Mar	Apr	May	Jun	Jul	Aug	Sep	Oct	Nov	Dec	Jan	Feb
# PTH-I		5			4			3			4	
# PTH-I >= 400		4			4			2			2	
Pop. Mean		910			572			445			895	
Std. Deviation		965			99			221			1209	
% PTH-I >= 400		80%			100%			67%			50%	



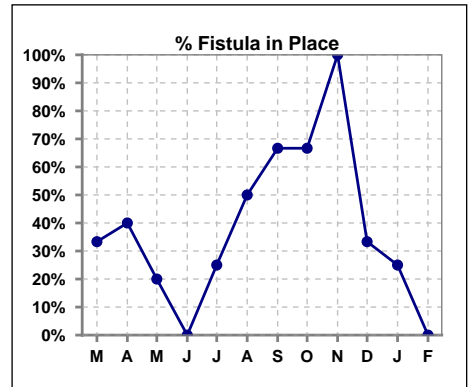
Methodology: a) All labs for 'Adequacy of Dialysis', 'Nutrition', 'Osteodystrophy', 'Anemia' and 'Diabetes' based on last value of month; b) BP's and #L processed are average of all values for month; c) Access data takes last access of month; d) Values for SGA and 'Infection Control' use most recent result.

**IV. ACCESS**

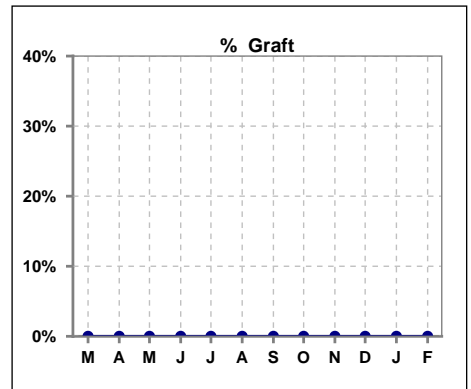
	Mar	Apr	May	Jun	Jul	Aug	Sep	Oct	Nov	Dec	Jan	Feb
# Access	3	5	5	3	4	4	3	3	3	3	4	4
# Fistula	1	2	0	0	1	2	2	2	3	1	1	0
% Fistula	33%	40%	0%	0%	25%	50%	67%	67%	100%	33%	25%	0%



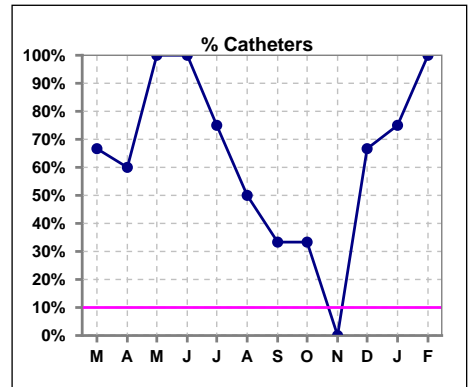
	Mar	Apr	May	Jun	Jul	Aug	Sep	Oct	Nov	Dec	Jan	Feb
# Patient	3	5	5	3	4	4	3	3	3	3	4	4
# Fistula in Place	1	2	1	0	1	2	2	2	3	1	1	0
% Fistula in Place	33%	40%	20%	0%	25%	50%	67%	67%	100%	33%	25%	0%



	Mar	Apr	May	Jun	Jul	Aug	Sep	Oct	Nov	Dec	Jan	Feb
# Access	3	5	5	3	4	4	3	3	3	3	4	4
# Graft	0	0	0	0	0	0	0	0	0	0	0	0
% Graft	0%	0%	0%	0%	0%	0%	0%	0%	0%	0%	0%	0%



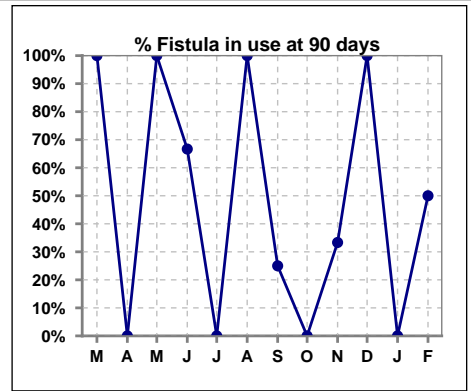
	Mar	Apr	May	Jun	Jul	Aug	Sep	Oct	Nov	Dec	Jan	Feb
# Access	3	5	5	3	4	4	3	3	3	3	4	4
# Catheters	2	3	5	3	3	2	1	1	0	2	3	4
% Catheters	67%	60%	100%	100%	75%	50%	33%	33%	0%	67%	75%	100%



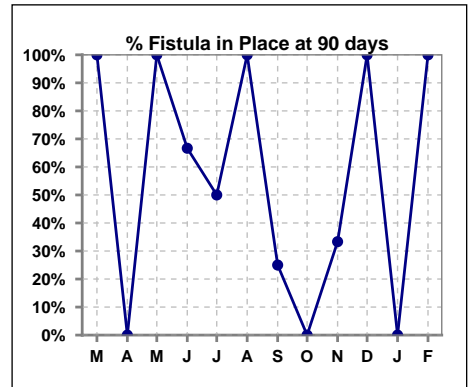
Methodology: a) All labs for 'Adequacy of Dialysis', 'Nutrition', 'Osteodystrophy', 'Anemia' and 'Diabetes' based on last value of month; b) BP's and #L processed are average of all values for month; c) Access data takes last access of month; d) Values for SGA and 'Infection Control' use most recent result.

**IV. ACCESS - CONT. Access at 90 days for those patients that reached 90 days within the month.**

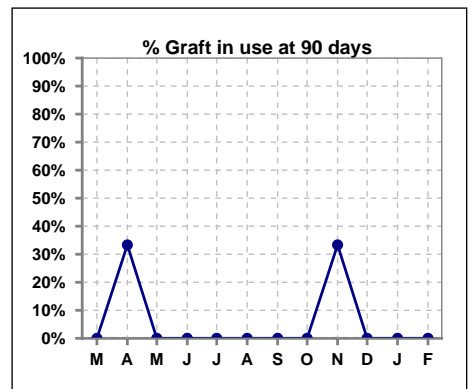
	Mar	Apr	May	Jun	Jul	Aug	Sep	Oct	Nov	Dec	Jan	Feb
# Patient	1	3	2	3	2	1	4	1	3	1	0	2
# Fistula in use	1	0	2	2	0	1	1	0	1	1	0	1
% Fistula in use	100%	0%	100%	67%	0%	100%	25%	0%	33%	100%	0%	50%



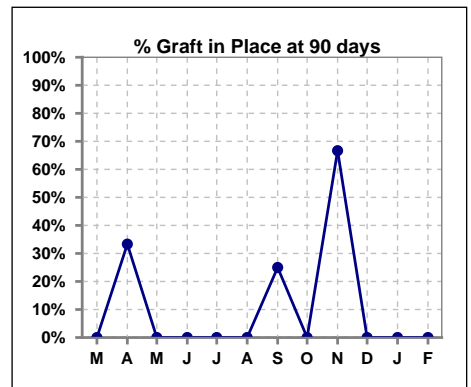
	Mar	Apr	May	Jun	Jul	Aug	Sep	Oct	Nov	Dec	Jan	Feb
# Patient	1	3	2	3	2	1	4	1	3	1	0	2
# Fistula in Place	1	0	2	2	1	1	1	0	1	1	0	2
% Fistula in Place	100%	0%	100%	67%	50%	100%	25%	0%	33%	100%	0%	100%



	Mar	Apr	May	Jun	Jul	Aug	Sep	Oct	Nov	Dec	Jan	Feb
# Patient	1	3	2	3	2	1	4	1	3	1	0	2
# Graft in use	0	1	0	0	0	0	0	0	1	0	0	0
% Graft in use	0%	33%	0%	0%	0%	0%	0%	0%	33%	0%	0%	0%



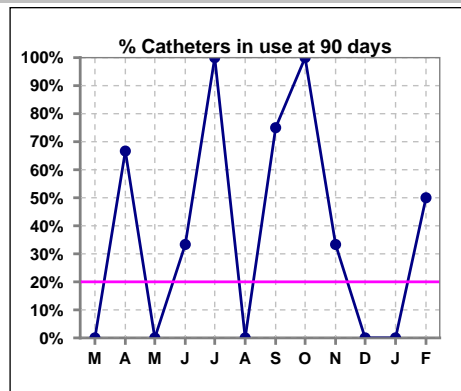
	Mar	Apr	May	Jun	Jul	Aug	Sep	Oct	Nov	Dec	Jan	Feb
# Patient	1	3	2	3	2	1	4	1	3	1	0	2
# Graft in Place	0	1	0	0	0	0	1	0	2	0	0	0
% Graft in Place	0%	33%	0%	0%	0%	0%	25%	0%	67%	0%	0%	0%



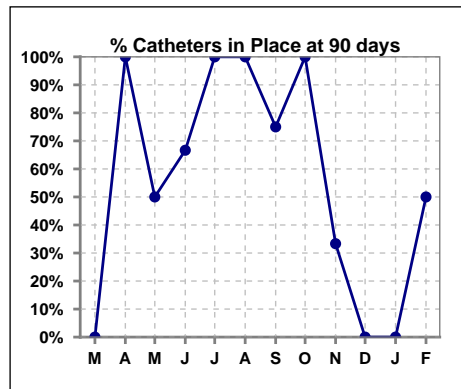
Methodology: a) All labs for 'Adequacy of Dialysis', 'Nutrition', 'Osteodystrophy', 'Anemia' and 'Diabetes' based on last value of month; b) BP's and #L processed are average of all values for month; c) Access data takes last access of month; d) Values for SGA and 'Infection Control' use most recent result.

**IV. ACCESS - CONT. Access at 90 days for those patients that reached 90 days within the month.**

	Mar	Apr	May	Jun	Jul	Aug	Sep	Oct	Nov	Dec	Jan	Feb
# Patient	1	3	2	3	2	1	4	1	3	1	0	2
# Catheters in use	0	2	0	1	2	0	3	1	1	0	0	1
% Catheters in use	0%	67%	0%	33%	100%	0%	75%	100%	33%	0%	0%	50%

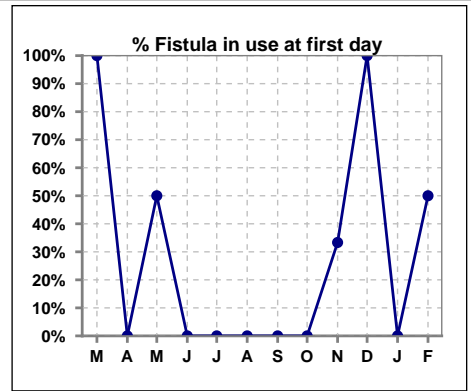


	Mar	Apr	May	Jun	Jul	Aug	Sep	Oct	Nov	Dec	Jan	Feb
# Patient	1	3	2	3	2	1	4	1	3	1	0	2
# Catheters in Place	0	3	1	2	2	1	3	1	1	0	0	1
% Catheters in Place	0%	100%	50%	67%	100%	100%	75%	100%	33%	0%	0%	50%

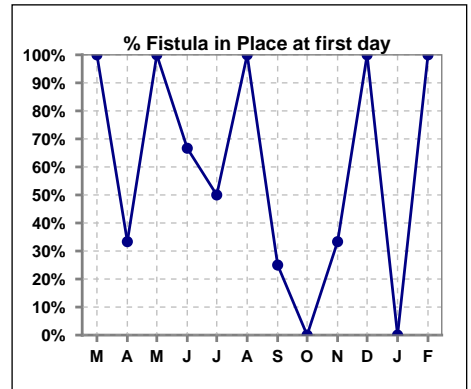


**IV. ACCESS - CONT. Access at first day for those patients that reached 90 days within the month.**

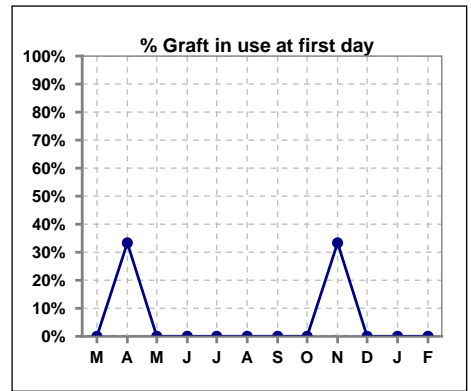
	Mar	Apr	May	Jun	Jul	Aug	Sep	Oct	Nov	Dec	Jan	Feb
# Patient	1	3	2	3	2	1	3	1	3	1	0	2
# Fistula in use	1	0	1	0	0	0	0	0	1	1	0	1
% Fistula in use	100%	0%	50%	0%	0%	0%	0%	0%	33%	100%	0%	50%



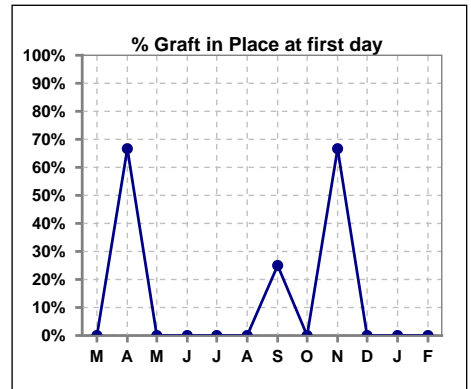
	Mar	Apr	May	Jun	Jul	Aug	Sep	Oct	Nov	Dec	Jan	Feb
# Patient	1	3	2	3	2	1	4	1	3	1	0	2
# Fistula in Place	1	1	2	2	1	1	1	0	1	1	0	2
% Fistula in Place	100%	33%	100%	67%	50%	100%	25%	0%	33%	100%	0%	100%



	Mar	Apr	May	Jun	Jul	Aug	Sep	Oct	Nov	Dec	Jan	Feb
# Patient	1	3	2	3	2	1	3	1	3	1	0	2
# Graft in use	0	1	0	0	0	0	0	0	1	0	0	0
% Graft in use	0%	33%	0%	0%	0%	0%	0%	0%	33%	0%	0%	0%



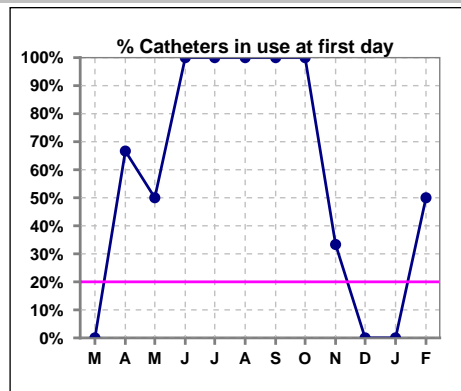
	Mar	Apr	May	Jun	Jul	Aug	Sep	Oct	Nov	Dec	Jan	Feb
# Patient	1	3	2	3	2	1	4	1	3	1	0	2
# Graft in Place	0	2	0	0	0	0	1	0	2	0	0	0
% Graft in Place	0%	67%	0%	0%	0%	0%	25%	0%	67%	0%	0%	0%



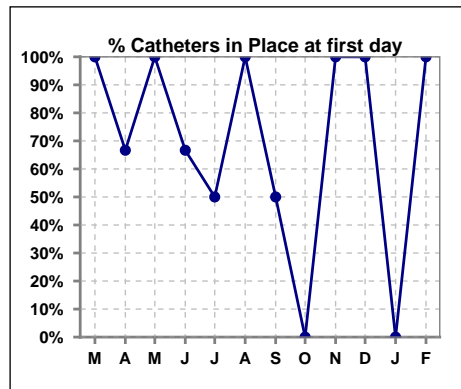
Methodology: a) All labs for 'Adequacy of Dialysis', 'Nutrition', 'Osteodystrophy', 'Anemia' and 'Diabetes' based on last value of month; b) BP's and #L processed are average of all values for month; c) Access data takes last access of month; d) Values for SGA and 'Infection Control' use most recent result.

**IV. ACCESS - CONT. Access at first day for those patients that reached 90 days within the month.**

	Mar	Apr	May	Jun	Jul	Aug	Sep	Oct	Nov	Dec	Jan	Feb
<b># Patient</b>	1	3	2	3	2	1	3	1	3	1	0	2
<b># Catheters in use</b>	0	2	1	3	2	1	3	1	1	0	0	1
<b>% Catheters in use</b>	0%	67%	50%	100%	100%	100%	100%	100%	33%	0%	0%	50%



	Mar	Apr	May	Jun	Jul	Aug	Sep	Oct	Nov	Dec	Jan	Feb
<b># Patient</b>	1	3	2	3	2	1	4	1	3	1	0	2
<b># Catheters in Place</b>	1	2	2	2	1	1	2	0	3	1	0	2
<b>% Catheters in Place</b>	100%	67%	100%	67%	50%	100%	50%	0%	100%	100%	0%	100%



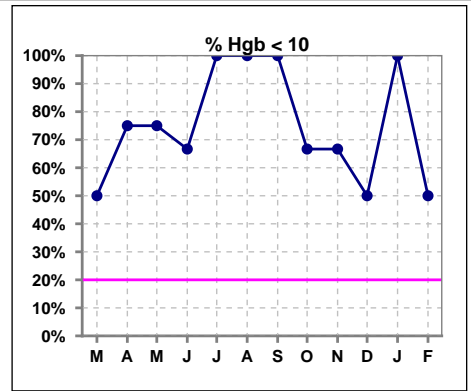
Methodology: a) All labs for 'Adequacy of Dialysis', 'Nutrition', 'Osteodystrophy', 'Anemia' and 'Diabetes' based on last value of month; b) BP's and #L processed are average of all values for month; c) Access data takes last access of month; d) Values for SGA and 'Infection Control' use most recent result.



**V. ANEMIA**

	Mar	Apr	May	Jun	Jul	Aug	Sep	Oct	Nov	Dec	Jan	Feb
# Hgb	2	4	4	3	4	4	2	3	3	2	4	4
# Hgb <= 10	1	3	3	2	4	4	2	2	2	1	4	2
Pop. Mean	10.2	9.1	9.6	9.2	8.3	8.8	9.3	10.1	8.9	9.3	9.6	10.0
Std. Deviation	0.6	1.4	1.3	1.5	0.7	1.1	0.8	1.3	1.9	1.5	0.1	1.2
% Hgb <= 10	50%	75%	75%	67%	100%	100%	100%	67%	67%	50%	100%	50%

Note: Excludes patients who received no ESA in month.



	Mar	Apr	May	Jun	Jul	Aug	Sep	Oct	Nov	Dec	Jan	Feb
# Hgb	2	4	4	3	4	4	2	3	3	2	4	4
# Hgb >= 12	0	0	0	0	0	0	0	0	0	0	0	0
Pop. Mean	10.2	9.1	9.6	9.2	8.3	8.8	9.3	10.1	8.9	9.3	9.6	10.0
Std. Deviation	0.6	1.4	1.3	1.5	0.7	1.1	0.8	1.3	1.9	1.5	0.1	1.2
% Hgb >= 12	0%	0%	0%	0%	0%	0%	0%	0%	0%	0%	0%	0%

Note: Excludes patients who received no ESA in month.

