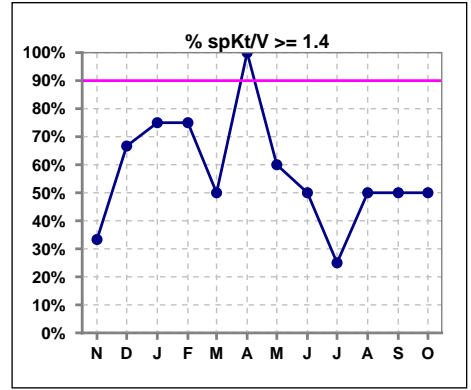
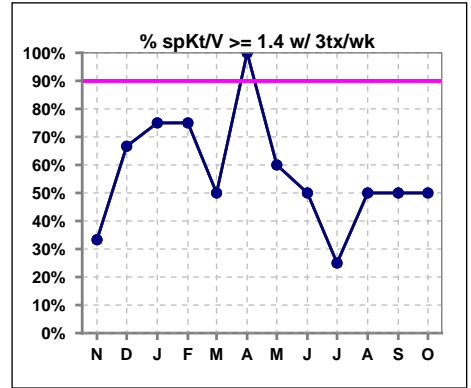


I. ADEQUACY OF DIALYSIS

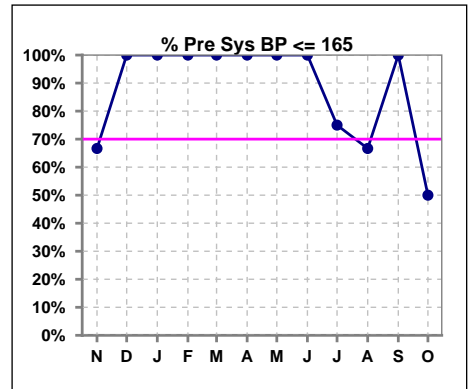
	Nov	Dec	Jan	Feb	Mar	Apr	May	Jun	Jul	Aug	Sep	Oct
# spKt/V	3	3	4	4	2	4	5	4	4	2	2	2
# spKt/V >= 1.4	1	2	3	3	1	4	3	2	1	1	1	1
Pop. Mean	1.36	1.62	1.52	1.51	1.23	1.60	1.29	1.45	1.14	1.32	1.56	1.36
Std. Deviation	0.42	0.27	0.27	0.27	0.34	0.23	0.51	0.22	0.44	0.58	0.38	0.22
% spKt/V >= 1.4	33%	67%	75%	75%	50%	100%	60%	50%	25%	50%	50%	50%
% spKt/V >= 1.2	67%	100%	75%	75%	50%	100%	80%	100%	50%	50%	100%	100%



	Nov	Dec	Jan	Feb	Mar	Apr	May	Jun	Jul	Aug	Sep	Oct
# spKt/V w/ 3tx/wk	3	3	4	4	2	4	5	4	4	2	2	2
# spKt/V >= 1.4 w/3tx/wk	1	2	3	3	1	4	3	2	1	1	1	1
Pop. Mean	1.36	1.61	1.52	1.51	1.24	1.60	1.29	1.45	1.14	1.32	1.56	1.36
Std. Deviation	0.42	0.27	0.27	0.27	0.35	0.23	0.51	0.22	0.44	0.58	0.38	0.22
% spKt/V >= 1.4 w/3tx/wk	33%	67%	75%	75%	50%	100%	60%	50%	25%	50%	50%	50%



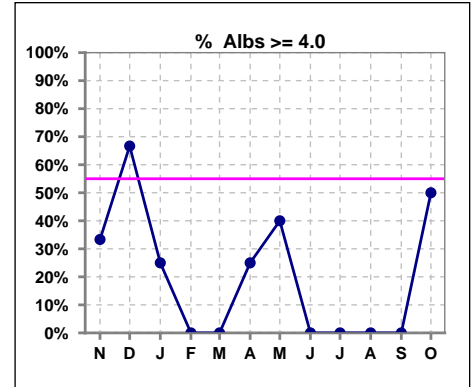
	Nov	Dec	Jan	Feb	Mar	Apr	May	Jun	Jul	Aug	Sep	Oct
# Pre Sys BP	3	3	4	4	2	4	6	4	4	3	2	2
# Pre Sys BP <= 165	2	3	4	4	2	4	6	4	3	2	2	1
Pop. Mean	153	133	135	129	134	122	114	131	130	142	135	147
Std. Deviation	16.8	21.4	13.0	25.8	9.2	9.5	17.2	17.4	26.1	32.5	16.3	32.5
% Pre Sys BP <= 165	67%	100%	100%	100%	100%	100%	100%	100%	75%	67%	100%	50%



*Albumin values use BCG method - as of July 2001

II. NUTRITION

	Nov	Dec	Jan	Feb	Mar	Apr	May	Jun	Jul	Aug	Sep	Oct
# Albumin	3	3	4	4	2	4	5	4	4	3	2	2
# Albumin >= 4.0	1	2	1	0	0	1	2	0	0	0	0	1
Pop. Mean	4.0	4.1	3.7	3.6	3.8	3.7	3.6	3.4	3.0	3.3	3.7	3.9
Std. Deviation	0.46	0.15	0.44	0.16	0.07	0.30	0.71	0.24	0.47	0.44	0.14	0.49
% Alb >= 4.0	33%	67%	25%	0%	0%	25%	40%	0%	0%	0%	0%	50%

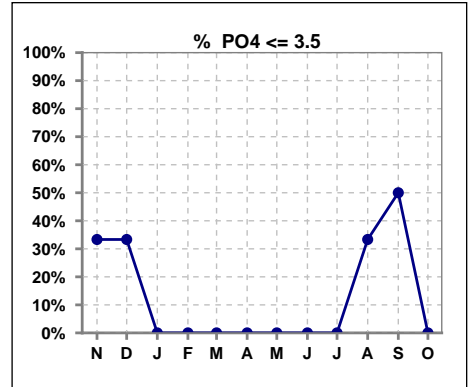


Methodology: a) All labs for 'Adequacy of Dialysis', 'Nutrition', 'Osteodystrophy', 'Anemia' and 'Diabetes' based on last value of month; b) BP's and #L processed are average of all values for month; c) Access data takes last access of month; d) Values for SGA and 'Infection Control' use most recent result.

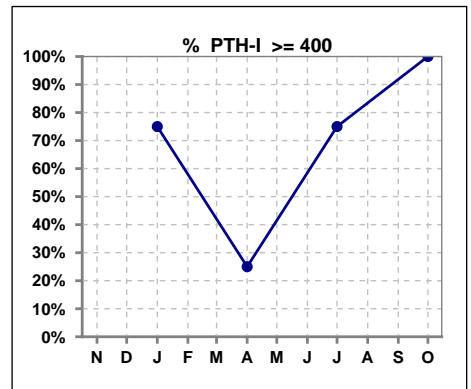
Lab methodology for PTH changed January 2012

III. OSTEODYSTROPHY

	Nov	Dec	Jan	Feb	Mar	Apr	May	Jun	Jul	Aug	Sep	Oct
# PO4	3	3	4	4	2	4	5	4	4	3	2	2
# PO4 <= 3.5	1	1	0	0	0	0	0	0	0	1	1	0
Pop. Mean	4.3	4.3	4.6	7.6	5.5	6.5	6.7	6.8	6.7	5.4	3.0	6.2
Std. Deviation	2.94	1.96	0.62	3.19	0.21	1.87	1.64	1.59	1.11	3.30	1.34	3.04
% PO4 <= 3.5	33%	33%	0%	0%	0%	0%	0%	0%	0%	33%	50%	0%



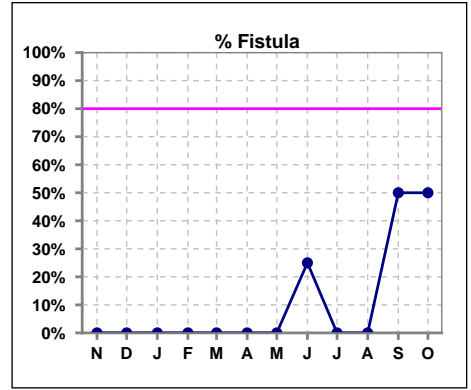
	Nov	Dec	Jan	Feb	Mar	Apr	May	Jun	Jul	Aug	Sep	Oct
# PTH-I			4			4			4			2
# PTH-I >= 400			3			1			3			2
Pop. Mean			403			245			514			474
Std. Deviation			236			224			260			13
% PTH-I >= 400			75%			25%			75%			100%



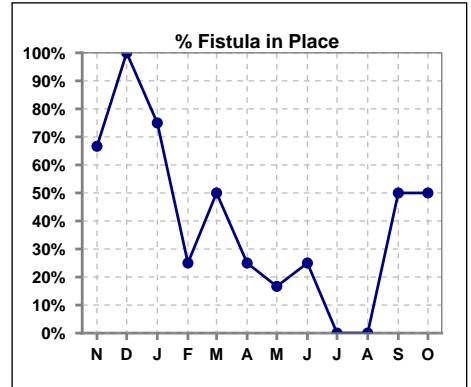
Methodology: a) All labs for 'Adequacy of Dialysis', 'Nutrition', 'Osteodystrophy', 'Anemia' and 'Diabetes' based on last value of month; b) BP's and #L processed are average of all values for month; c) Access data takes last access of month; d) Values for SGA and 'Infection Control' use most recent result.

IV. ACCESS

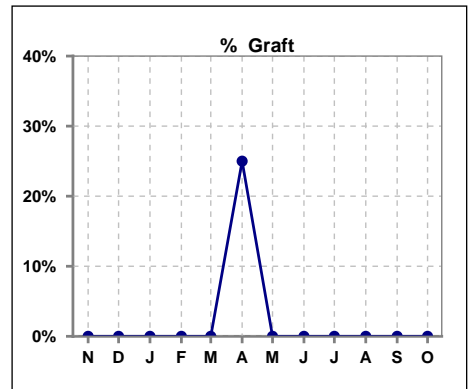
	Nov	Dec	Jan	Feb	Mar	Apr	May	Jun	Jul	Aug	Sep	Oct
# Access	3	3	4	4	2	4	6	4	4	3	2	2
# Fistula	0	0	0	0	0	0	0	1	0	0	1	1
% Fistula	0%	0%	0%	0%	0%	0%	0%	25%	0%	0%	50%	50%



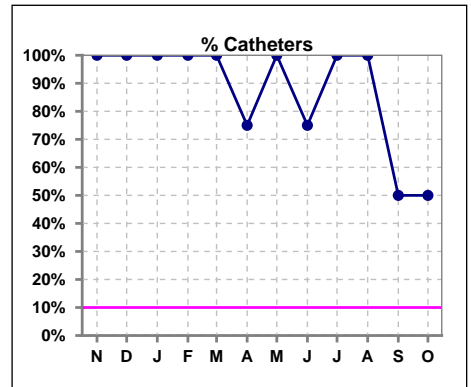
	Nov	Dec	Jan	Feb	Mar	Apr	May	Jun	Jul	Aug	Sep	Oct
# Patient	3	3	4	4	2	4	6	4	4	3	2	2
# Fistula in Place	2	3	3	1	1	1	1	1	0	0	1	1
% Fistula in Place	67%	100%	75%	25%	50%	25%	17%	25%	0%	0%	50%	50%



	Nov	Dec	Jan	Feb	Mar	Apr	May	Jun	Jul	Aug	Sep	Oct
# Access	3	3	4	4	2	4	6	4	4	3	2	2
# Graft	0	0	0	0	0	1	0	0	0	0	0	0
% Graft	0%	0%	0%	0%	0%	25%	0%	0%	0%	0%	0%	0%



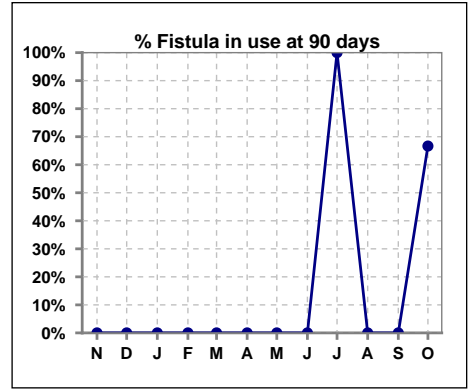
	Nov	Dec	Jan	Feb	Mar	Apr	May	Jun	Jul	Aug	Sep	Oct
# Access	3	3	4	4	2	4	6	4	4	3	2	2
# Catheters	3	3	4	4	2	3	6	3	4	3	1	1
% Catheters	100%	100%	100%	100%	100%	75%	100%	75%	100%	100%	50%	50%



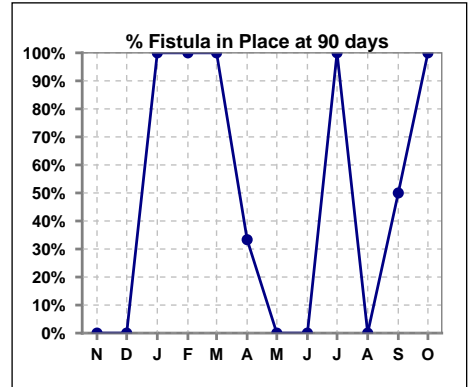
Methodology: a) All labs for 'Adequacy of Dialysis', 'Nutrition', 'Osteodystrophy', 'Anemia' and 'Diabetes' based on last value of month; b) BP's and #L processed are average of all values for month; c) Access data takes last access of month; d) Values for SGA and 'Infection Control' use most recent result.

IV. ACCESS - CONT. Access at 90 days for those patients that reached 90 days within the month.

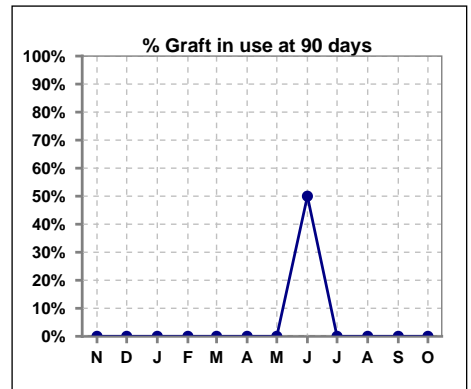
	Nov	Dec	Jan	Feb	Mar	Apr	May	Jun	Jul	Aug	Sep	Oct
# Patient	1	1	2	2	1	3	1	2	1	5	2	3
# Fistula in use	0	0	0	0	0	0	0	0	1	0	0	2
% Fistula in use	0%	0%	0%	0%	0%	0%	0%	0%	100%	0%	0%	67%



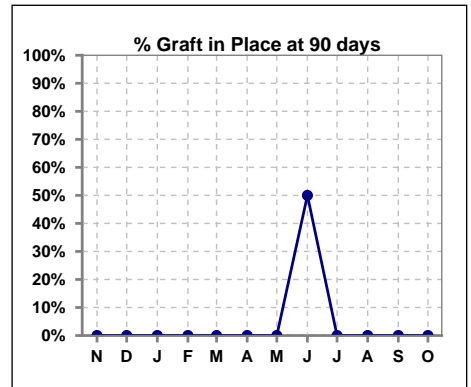
	Nov	Dec	Jan	Feb	Mar	Apr	May	Jun	Jul	Aug	Sep	Oct
# Patient	1	1	2	2	1	3	1	2	1	5	2	3
# Fistula in Place	0	0	2	2	1	1	0	0	1	0	1	3
% Fistula in Place	0%	0%	100%	100%	100%	33%	0%	0%	100%	0%	50%	100%



	Nov	Dec	Jan	Feb	Mar	Apr	May	Jun	Jul	Aug	Sep	Oct
# Patient	1	1	2	2	1	3	1	2	1	5	2	3
# Graft in use	0	0	0	0	0	0	0	1	0	0	0	0
% Graft in use	0%	0%	0%	0%	0%	0%	0%	50%	0%	0%	0%	0%



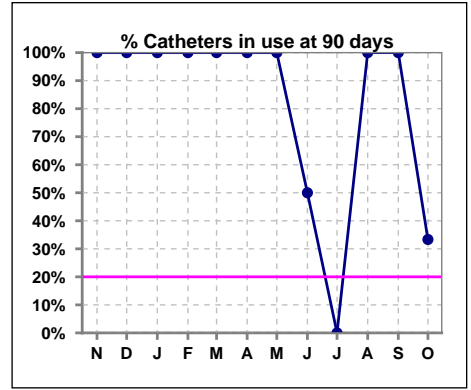
	Nov	Dec	Jan	Feb	Mar	Apr	May	Jun	Jul	Aug	Sep	Oct
# Patient	1	1	2	2	1	3	1	2	1	5	2	3
# Graft in Place	0	0	0	0	0	0	0	1	0	0	0	0
% Graft in Place	0%	0%	0%	0%	0%	0%	0%	50%	0%	0%	0%	0%



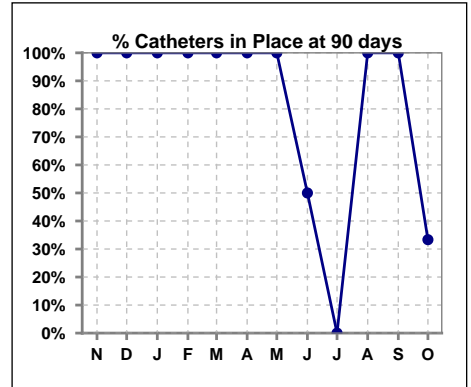
Methodology: a) All labs for 'Adequacy of Dialysis', 'Nutrition', 'Osteodystrophy', 'Anemia' and 'Diabetes' based on last value of month; b) BP's and #L processed are average of all values for month; c) Access data takes last access of month; d) Values for SGA and 'Infection Control' use most recent result.

IV. ACCESS - CONT. Access at 90 days for those patients that reached 90 days within the month.

	Nov	Dec	Jan	Feb	Mar	Apr	May	Jun	Jul	Aug	Sep	Oct
# Patient	1	1	2	2	1	3	1	2	1	5	2	3
# Catheters in use	1	1	2	2	1	3	1	1	0	5	2	1
% Catheters in use	100%	100%	100%	100%	100%	100%	100%	50%	0%	100%	100%	33%



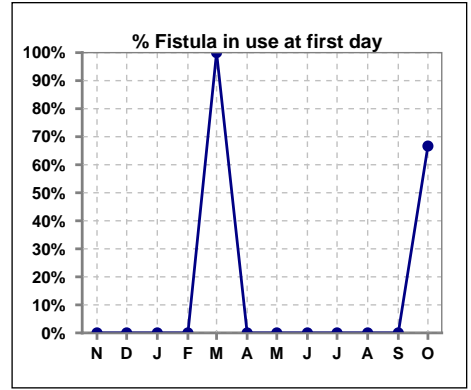
	Nov	Dec	Jan	Feb	Mar	Apr	May	Jun	Jul	Aug	Sep	Oct
# Patient	1	1	2	2	1	3	1	2	1	5	2	3
# Catheters in Place	1	1	2	2	1	3	1	1	0	5	2	1
% Catheters in Place	100%	100%	100%	100%	100%	100%	100%	50%	0%	100%	100%	33%



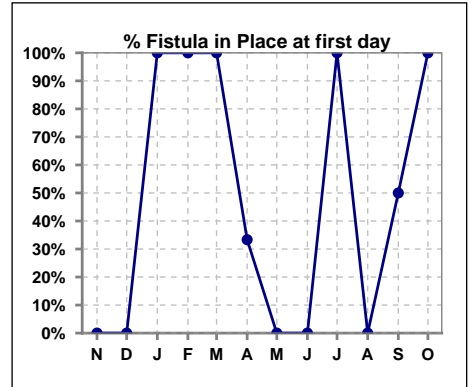
Methodology: a) All labs for 'Adequacy of Dialysis', 'Nutrition', 'Osteodystrophy', 'Anemia' and 'Diabetes' based on last value of month; b) BP's and #L processed are average of all values for month; c) Access data takes last access of month; d) Values for SGA and 'Infection Control' use most recent result.

IV. ACCESS - CONT. Access at first day for those patients that reached 90 days within the month.

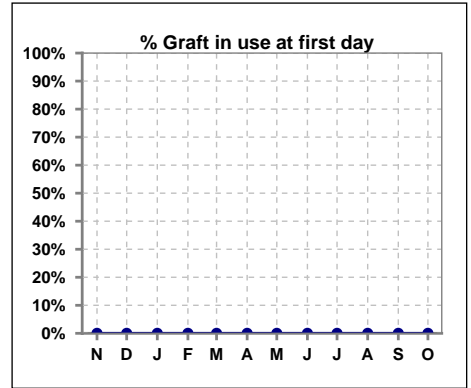
	Nov	Dec	Jan	Feb	Mar	Apr	May	Jun	Jul	Aug	Sep	Oct
# Patient	1	1	2	2	1	3	1	2	1	5	2	3
# Fistula in use	0	0	0	0	1	0	0	0	0	0	0	2
% Fistula in use	0%	0%	0%	0%	100%	0%	0%	0%	0%	0%	0%	67%



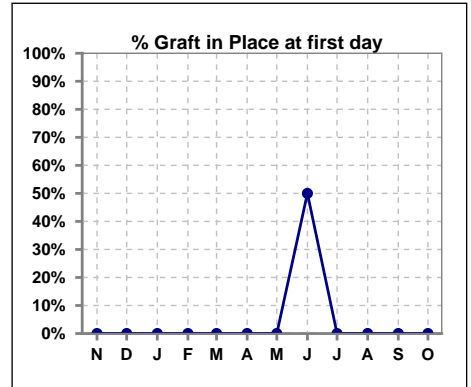
	Nov	Dec	Jan	Feb	Mar	Apr	May	Jun	Jul	Aug	Sep	Oct
# Patient	1	1	2	2	1	3	1	2	1	5	2	3
# Fistula in Place	0	0	2	2	1	1	0	0	1	0	1	3
% Fistula in Place	0%	0%	100%	100%	100%	33%	0%	0%	100%	0%	50%	100%



	Nov	Dec	Jan	Feb	Mar	Apr	May	Jun	Jul	Aug	Sep	Oct
# Patient	1	1	2	2	1	3	1	2	1	5	2	3
# Graft in use	0	0	0	0	0	0	0	0	0	0	0	0
% Graft in use	0%	0%	0%	0%	0%	0%	0%	0%	0%	0%	0%	0%



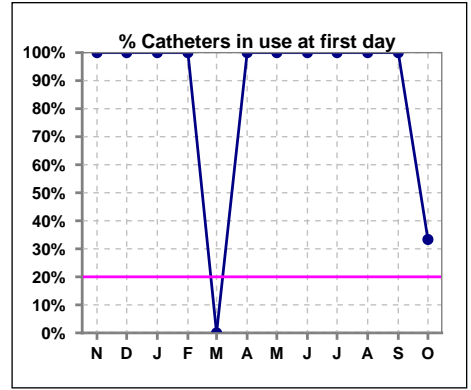
	Nov	Dec	Jan	Feb	Mar	Apr	May	Jun	Jul	Aug	Sep	Oct
# Patient	1	1	2	2	1	3	1	2	1	5	2	3
# Graft in Place	0	0	0	0	0	0	0	1	0	0	0	0
% Graft in Place	0%	0%	0%	0%	0%	0%	0%	50%	0%	0%	0%	0%



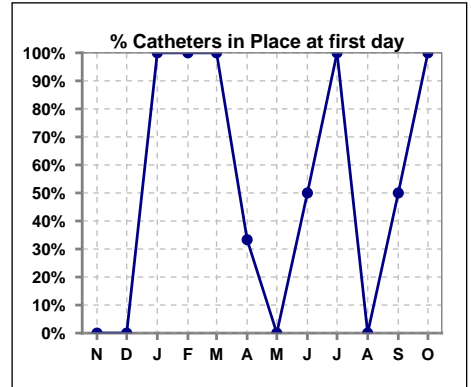
Methodology: a) All labs for 'Adequacy of Dialysis', 'Nutrition', 'Osteodystrophy', 'Anemia' and 'Diabetes' based on last value of month; b) BP's and #L processed are average of all values for month; c) Access data takes last access of month; d) Values for SGA and 'Infection Control' use most recent result.

IV. ACCESS - CONT. Access at first day for those patients that reached 90 days within the month.

	Nov	Dec	Jan	Feb	Mar	Apr	May	Jun	Jul	Aug	Sep	Oct
# Patient	1	1	2	2	1	3	1	2	1	5	2	3
# Catheters in use	1	1	2	2	0	3	1	2	1	5	2	1
% Catheters in use	100%	100%	100%	100%	0%	100%	100%	100%	100%	100%	100%	33%



	Nov	Dec	Jan	Feb	Mar	Apr	May	Jun	Jul	Aug	Sep	Oct
# Patient	1	1	2	2	1	3	1	2	1	5	2	3
# Catheters in Place	0	0	2	2	1	1	0	1	1	0	1	3
% Catheters in Place	0%	0%	100%	100%	100%	33%	0%	50%	100%	0%	50%	100%

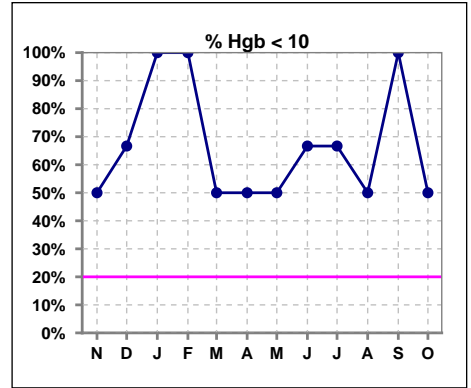


Methodology: a) All labs for 'Adequacy of Dialysis', 'Nutrition', 'Osteodystrophy', 'Anemia' and 'Diabetes' based on last value of month; b) BP's and #L processed are average of all values for month; c) Access data takes last access of month; d) Values for SGA and 'Infection Control' use most recent result.

V. ANEMIA

	Nov	Dec	Jan	Feb	Mar	Apr	May	Jun	Jul	Aug	Sep	Oct
# Hgb	2	3	4	3	2	4	4	3	3	2	2	2
# Hgb <= 10	1	2	4	3	1	2	2	2	2	1	2	1
Pop. Mean	9.9	9.5	8.8	8.9	9.9	9.6	10.1	9.4	8.4	9.0	9.4	10.7
Std. Deviation	1.7	1.0	0.9	0.3	0.6	1.5	1.9	2.1	2.0	1.6	0.3	1.7
% Hgb <= 10	50%	67%	100%	100%	50%	50%	50%	67%	67%	50%	100%	50%

Note: Excludes patients who received no ESA in month.



	Nov	Dec	Jan	Feb	Mar	Apr	May	Jun	Jul	Aug	Sep	Oct
# Hgb	2	3	4	3	2	4	4	3	3	2	2	2
# Hgb >= 12	0	0	0	0	0	0	1	0	0	0	0	0
Pop. Mean	9.9	9.5	8.8	8.9	9.9	9.6	10.1	9.4	8.4	9.0	9.4	10.7
Std. Deviation	1.7	1.0	0.9	0.3	0.6	1.5	1.9	2.1	2.0	1.6	0.3	1.7
% Hgb >= 12	0%	0%	0%	0%	0%	0%	25%	0%	0%	0%	0%	0%

Note: Excludes patients who received no ESA in month.

