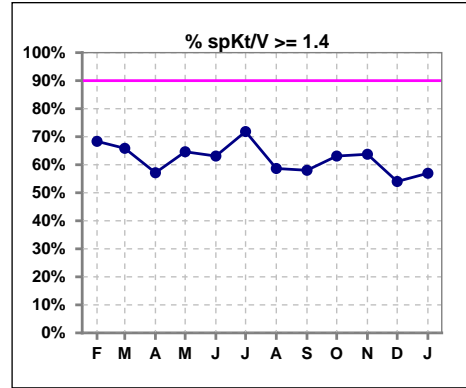
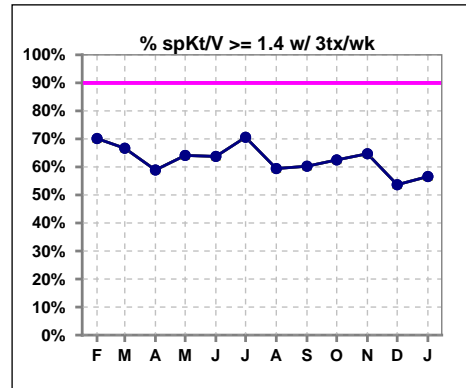


I. ADEQUACY OF DIALYSIS

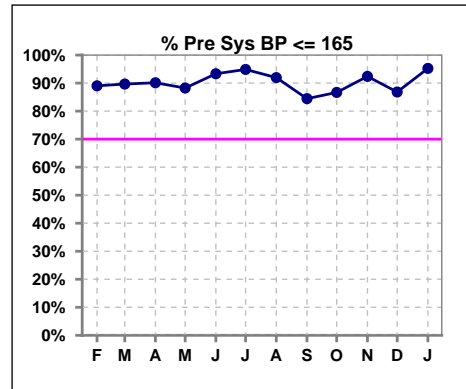
	Feb	Mar	Apr	May	Jun	Jul	Aug	Sep	Oct	Nov	Dec	Jan
# spKt/V	79	82	77	82	84	71	75	81	84	91	87	79
# spKt/V >= 1.4	54	54	44	53	53	51	44	47	53	58	47	45
Pop. Mean	1.63	1.55	1.54	1.55	1.51	1.56	1.45	1.52	1.53	1.55	1.50	1.51
Std. Deviation	0.48	0.35	0.36	0.31	0.36	0.29	0.29	0.31	0.33	0.35	0.35	0.33
% spKt/V >= 1.4	68%	66%	57%	65%	63%	72%	59%	58%	63%	64%	54%	57%
% spKt/V >= 1.2	92%	93%	92%	98%	92%	94%	81%	91%	94%	89%	91%	96%



	Feb	Mar	Apr	May	Jun	Jul	Aug	Sep	Oct	Nov	Dec	Jan
# spKt/V w/ 3tx/wk	77	81	73	78	80	68	69	78	80	85	82	76
# spKt/V >= 1.4 w/3tx/wk	54	54	43	50	51	48	41	47	50	55	44	43
Pop. Mean	1.65	1.55	1.55	1.54	1.52	1.56	1.45	1.54	1.51	1.55	1.50	1.51
Std. Deviation	0.47	0.35	0.36	0.31	0.35	0.29	0.29	0.30	0.31	0.34	0.36	0.34
% spKt/V >= 1.4 w/3tx/wk	67%	59%	64%	64%	71%	59%	60%	63%	65%	54%	57%	



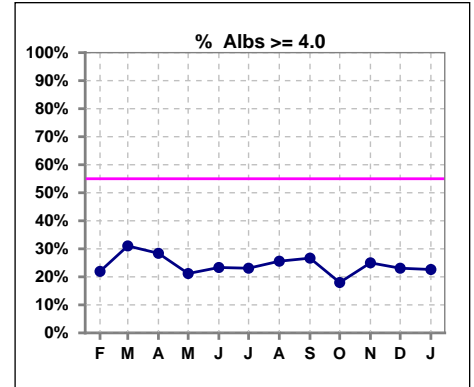
	Feb	Mar	Apr	May	Jun	Jul	Aug	Sep	Oct	Nov	Dec	Jan
# Pre Sys BP	82	87	81	85	90	78	87	90	90	92	91	84
# Pre Sys BP <= 165	73	79	75	75	85	76	80	76	81	86	80	80
Pop. Mean	141	141	142	143	141	136	139	144	142	139	139	138
Std. Deviation	17.5	16.1	16.9	17.6	16.9	15.6	18.7	20.1	17.3	17.7	20.0	16.9
% Pre Sys BP <= 165	89%	90%	90%	88%	93%	95%	92%	84%	87%	92%	87%	95%



*Albumin values use BCG method - as of July 2001

II. NUTRITION

	Feb	Mar	Apr	May	Jun	Jul	Aug	Sep	Oct	Nov	Dec	Jan
# Albumin	82	87	81	85	90	78	86	90	89	92	91	84
# Albumin >= 4.0	18	27	23	18	21	18	22	24	16	23	21	19
Pop. Mean	3.6	3.6	3.6	3.6	3.6	3.6	3.7	3.6	3.5	3.6	3.5	3.5
Std. Deviation	0.53	0.49	0.50	0.47	0.50	0.48	0.48	0.51	0.51	0.55	0.51	0.51
% Alb >= 4.0	22%	31%	28%	21%	23%	23%	26%	27%	18%	25%	23%	23%

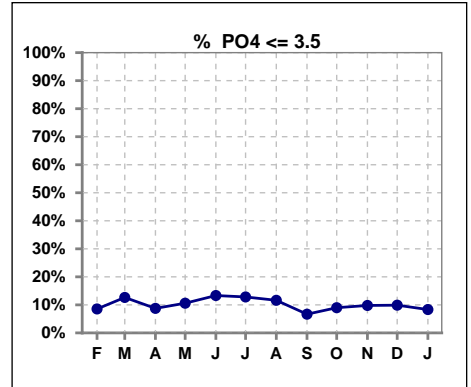


Methodology: a) All labs for 'Adequacy of Dialysis', 'Nutrition', 'Osteodystrophy', 'Anemia' and 'Diabetes' based on last value of month; b) BP's and #L processed are average of all values for month; c) Access data takes last access of month; d) Values for SGA and 'Infection Control' use most recent result.

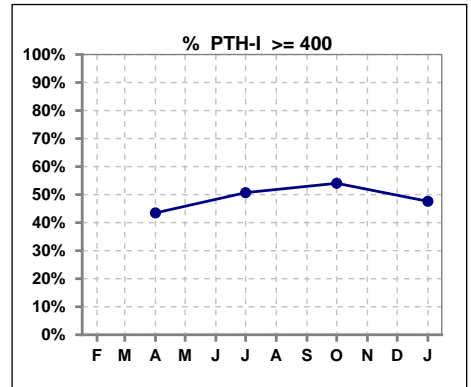
Lab methodology for PTH changed January 2012

III. OSTEODYSTROPHY

	Feb	Mar	Apr	May	Jun	Jul	Aug	Sep	Oct	Nov	Dec	Jan
# PO4	82	87	80	85	90	78	86	90	89	92	91	84
# PO4 <= 3.5	7	11	7	9	12	10	10	6	8	9	9	7
Pop. Mean	5.8	5.7	5.5	5.5	5.7	5.5	5.3	5.5	5.7	5.6	5.7	5.6
Std. Deviation	1.97	1.94	1.86	1.63	1.68	2.19	1.46	1.61	1.76	1.94	1.92	1.87
% PO4 <= 3.5	9%	13%	9%	11%	13%	13%	12%	7%	9%	10%	10%	8%



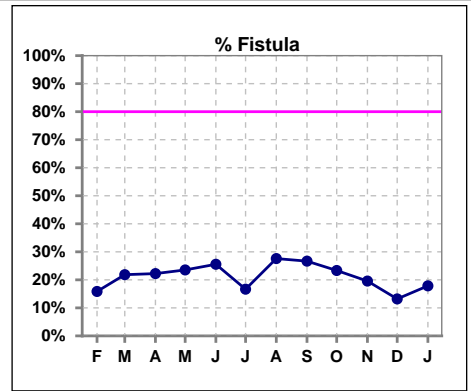
	Feb	Mar	Apr	May	Jun	Jul	Aug	Sep	Oct	Nov	Dec	Jan
# PTH-I			69			71			74			84
# PTH-I >= 400			30			36			40			40
Pop. Mean			447			407			519			559
Std. Deviation			329			273			518			752
% PTH-I >= 400			43%			51%			54%			48%



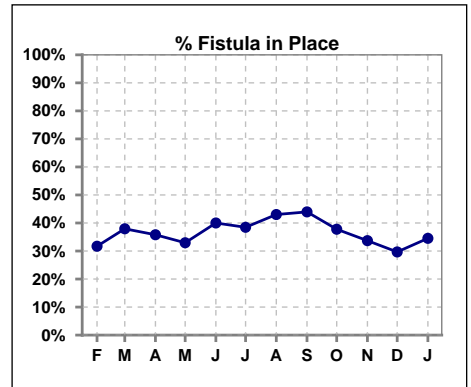
Methodology: a) All labs for 'Adequacy of Dialysis', 'Nutrition', 'Osteodystrophy', 'Anemia' and 'Diabetes' based on last value of month; b) BP's and #L processed are average of all values for month; c) Access data takes last access of month; d) Values for SGA and 'Infection Control' use most recent result.

IV. ACCESS

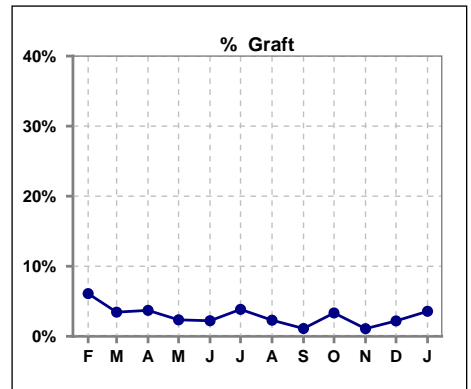
	Feb	Mar	Apr	May	Jun	Jul	Aug	Sep	Oct	Nov	Dec	Jan
# Access	82	87	81	85	90	78	87	90	90	92	91	84
# Fistula	13	19	18	20	23	13	24	24	21	18	12	15
% Fistula	16%	22%	22%	24%	26%	17%	28%	27%	23%	20%	13%	18%



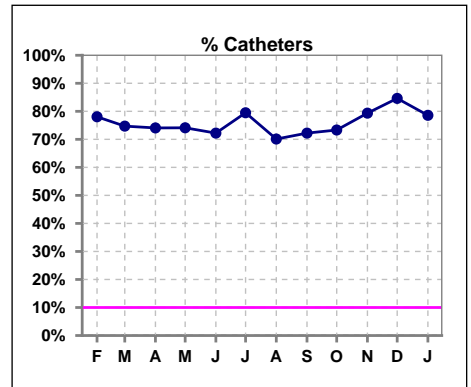
	Feb	Mar	Apr	May	Jun	Jul	Aug	Sep	Oct	Nov	Dec	Jan
# Patient	82	87	81	85	90	78	86	91	90	92	91	84
# Fistula in Place	26	33	29	28	36	30	37	40	34	31	27	29
% Fistula in Place	32%	38%	36%	33%	40%	38%	43%	44%	38%	34%	30%	35%



	Feb	Mar	Apr	May	Jun	Jul	Aug	Sep	Oct	Nov	Dec	Jan
# Access	82	87	81	85	90	78	87	90	90	92	91	84
# Graft	5	3	3	2	2	3	2	1	3	1	2	3
% Graft	6%	3%	4%	2%	2%	4%	2%	1%	3%	1%	2%	4%



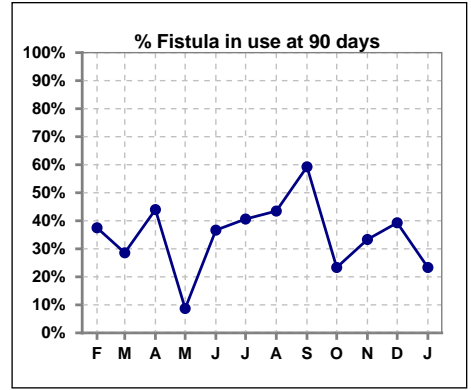
	Feb	Mar	Apr	May	Jun	Jul	Aug	Sep	Oct	Nov	Dec	Jan
# Access	82	87	81	85	90	78	87	90	90	92	91	84
# Catheters	64	65	60	63	65	62	61	65	66	73	77	66
% Catheters	78%	75%	74%	74%	72%	79%	70%	72%	73%	79%	85%	79%



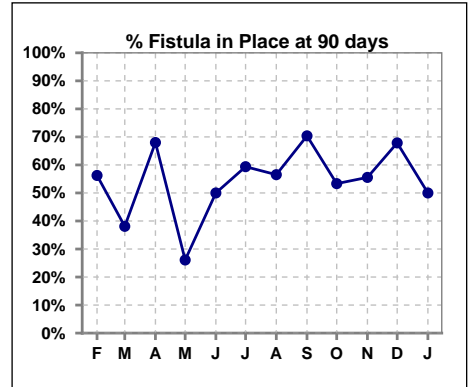
Methodology: a) All labs for 'Adequacy of Dialysis', 'Nutrition', 'Osteodystrophy', 'Anemia' and 'Diabetes' based on last value of month; b) BP's and #L processed are average of all values for month; c) Access data takes last access of month; d) Values for SGA and 'Infection Control' use most recent result.

IV. ACCESS - CONT. Access at 90 days for those patients that reached 90 days within the month.

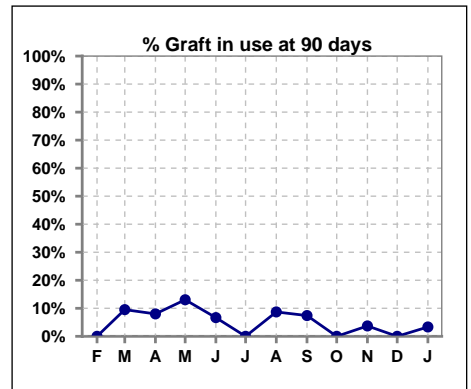
	Feb	Mar	Apr	May	Jun	Jul	Aug	Sep	Oct	Nov	Dec	Jan
# Patient	16	21	25	23	30	32	23	27	30	27	28	30
# Fistula in use	6	6	11	2	11	13	10	16	7	9	11	7
% Fistula in use	38%	29%	44%	9%	37%	41%	43%	59%	23%	33%	39%	23%



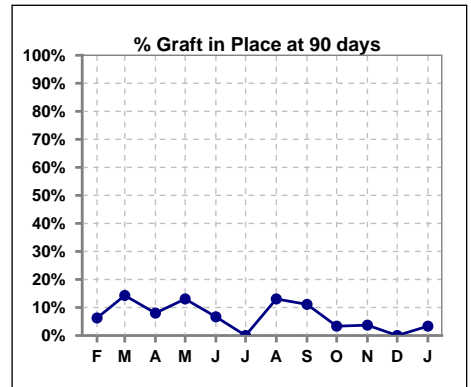
	Feb	Mar	Apr	May	Jun	Jul	Aug	Sep	Oct	Nov	Dec	Jan
# Patient	16	21	25	23	30	32	23	27	30	27	28	30
# Fistula in Place	9	8	17	6	15	19	13	19	16	15	19	15
% Fistula in Place	56%	38%	68%	26%	50%	59%	57%	70%	53%	56%	68%	50%



	Feb	Mar	Apr	May	Jun	Jul	Aug	Sep	Oct	Nov	Dec	Jan
# Patient	16	21	25	23	30	32	23	27	30	27	28	30
# Graft in use	0	2	2	3	2	0	2	2	0	1	0	1
% Graft in use	0%	10%	8%	13%	7%	0%	9%	7%	0%	4%	0%	3%



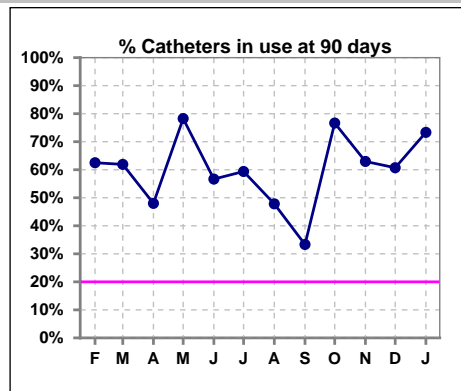
	Feb	Mar	Apr	May	Jun	Jul	Aug	Sep	Oct	Nov	Dec	Jan
# Patient	16	21	25	23	30	32	23	27	30	27	28	30
# Graft in Place	1	3	2	3	2	0	3	3	1	1	0	1
% Graft in Place	6%	14%	8%	13%	7%	0%	13%	11%	3%	4%	0%	3%



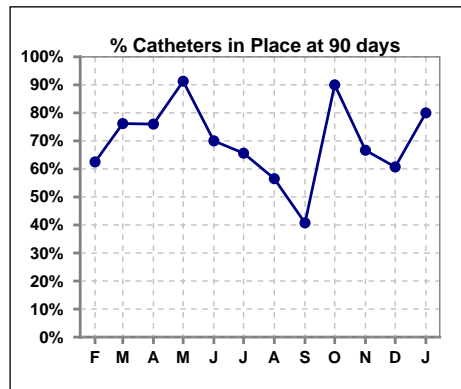
Methodology: a) All labs for 'Adequacy of Dialysis', 'Nutrition', 'Osteodystrophy', 'Anemia' and 'Diabetes' based on last value of month; b) BP's and #L processed are average of all values for month; c) Access data takes last access of month; d) Values for SGA and 'Infection Control' use most recent result.

IV. ACCESS - CONT. Access at 90 days for those patients that reached 90 days within the month.

	Feb	Mar	Apr	May	Jun	Jul	Aug	Sep	Oct	Nov	Dec	Jan
# Patient	16	21	25	23	30	32	23	27	30	27	28	30
# Catheters in use	10	13	12	18	17	19	11	9	23	17	17	22
% Catheters in use	63%	62%	48%	78%	57%	59%	48%	33%	77%	63%	61%	73%

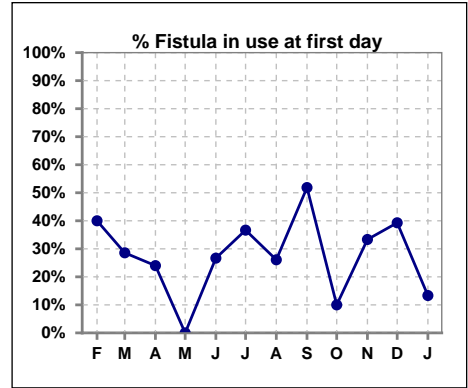


	Feb	Mar	Apr	May	Jun	Jul	Aug	Sep	Oct	Nov	Dec	Jan
# Patient	16	21	25	23	30	32	23	27	30	27	28	30
# Catheters in Place	10	16	19	21	21	21	13	11	27	18	17	24
% Catheters in Place	63%	76%	76%	91%	70%	66%	57%	41%	90%	67%	61%	80%

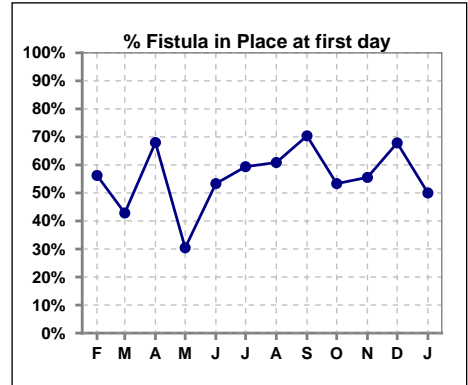


IV. ACCESS - CONT. Access at first day for those patients that reached 90 days within the month.

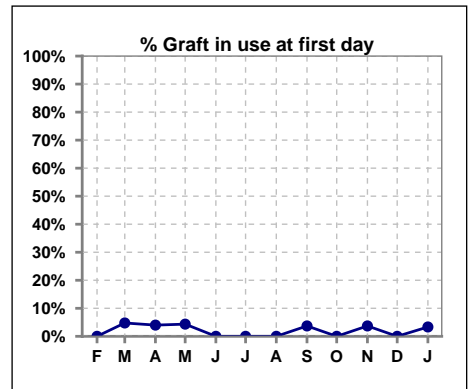
	Feb	Mar	Apr	May	Jun	Jul	Aug	Sep	Oct	Nov	Dec	Jan
# Patient	15	21	25	23	30	30	23	27	30	27	28	30
# Fistula in use	6	6	6	0	8	11	6	14	3	9	11	4
% Fistula in use	40%	29%	24%	0%	27%	37%	26%	52%	10%	33%	39%	13%



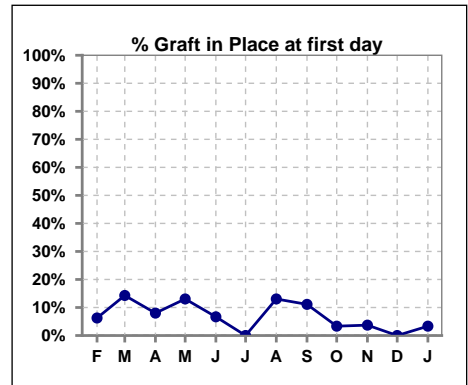
	Feb	Mar	Apr	May	Jun	Jul	Aug	Sep	Oct	Nov	Dec	Jan
# Patient	16	21	25	23	30	32	23	27	30	27	28	30
# Fistula in Place	9	9	17	7	16	19	14	19	16	15	19	15
% Fistula in Place	56%	43%	68%	30%	53%	59%	61%	70%	53%	56%	68%	50%



	Feb	Mar	Apr	May	Jun	Jul	Aug	Sep	Oct	Nov	Dec	Jan
# Patient	15	21	25	23	30	30	23	27	30	27	28	30
# Graft in use	0	1	1	1	0	0	0	1	0	1	0	1
% Graft in use	0%	5%	4%	4%	0%	0%	0%	4%	0%	4%	0%	3%



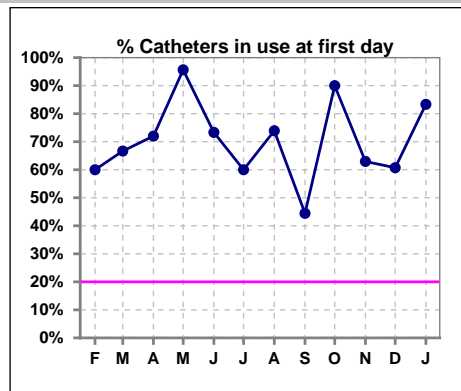
	Feb	Mar	Apr	May	Jun	Jul	Aug	Sep	Oct	Nov	Dec	Jan
# Patient	16	21	25	23	30	32	23	27	30	27	28	30
# Graft in Place	1	3	2	3	2	0	3	3	1	1	0	1
% Graft in Place	6%	14%	8%	13%	7%	0%	13%	11%	3%	4%	0%	3%



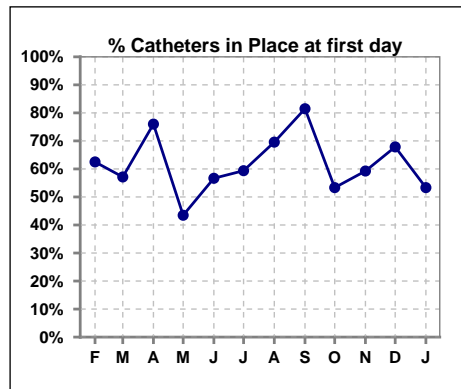
Methodology: a) All labs for 'Adequacy of Dialysis', 'Nutrition', 'Osteodystrophy', 'Anemia' and 'Diabetes' based on last value of month; b) BP's and #L processed are average of all values for month; c) Access data takes last access of month; d) Values for SGA and 'Infection Control' use most recent result.

IV. ACCESS - CONT. Access at first day for those patients that reached 90 days within the month.

	Feb	Mar	Apr	May	Jun	Jul	Aug	Sep	Oct	Nov	Dec	Jan
# Patient	15	21	25	23	30	30	23	27	30	27	28	30
# Catheters in use	9	14	18	22	22	18	17	12	27	17	17	25
% Catheters in use	60%	67%	72%	96%	73%	60%	74%	44%	90%	63%	61%	83%



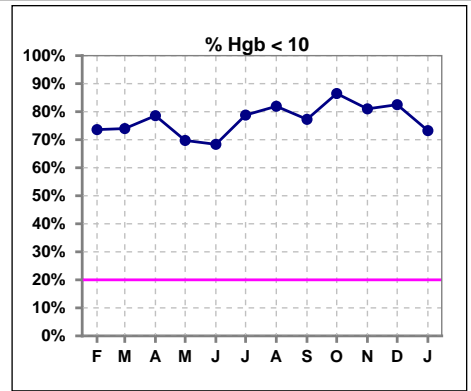
	Feb	Mar	Apr	May	Jun	Jul	Aug	Sep	Oct	Nov	Dec	Jan
# Patient	16	21	25	23	30	32	23	27	30	27	28	30
# Catheters in Place	10	12	19	10	17	19	16	22	16	16	19	16
% Catheters in Place	63%	57%	76%	43%	57%	59%	70%	81%	53%	59%	68%	53%



V. ANEMIA

	Feb	Mar	Apr	May	Jun	Jul	Aug	Sep	Oct	Nov	Dec	Jan
# Hgb	72	73	70	76	79	66	72	66	74	79	80	71
# Hgb <= 10	53	54	55	53	54	52	59	51	64	64	66	52
Pop. Mean	9.3	9.2	9.1	9.5	9.4	9.0	9.0	9.0	8.8	8.9	9.1	9.3
Std. Deviation	1.2	1.1	1.3	1.4	1.3	1.5	1.4	1.3	1.2	1.3	1.3	1.4
% Hgb <= 10	74%	74%	79%	70%	68%	79%	82%	77%	86%	81%	83%	73%

Note: Excludes patients who received no ESA in month.



	Feb	Mar	Apr	May	Jun	Jul	Aug	Sep	Oct	Nov	Dec	Jan
# Hgb	72	73	70	76	79	66	72	66	74	79	80	71
# Hgb >= 12	1	0	1	4	2	2	2	0	0	0	3	2
Pop. Mean	9.3	9.2	9.1	9.5	9.4	9.0	9.0	9.0	8.8	8.9	9.1	9.3
Std. Deviation	1.2	1.1	1.3	1.4	1.3	1.5	1.4	1.3	1.2	1.3	1.3	1.4
% Hgb >= 12	1%	0%	1%	5%	3%	3%	3%	0%	0%	0%	4%	3%

Note: Excludes patients who received no ESA in month.

