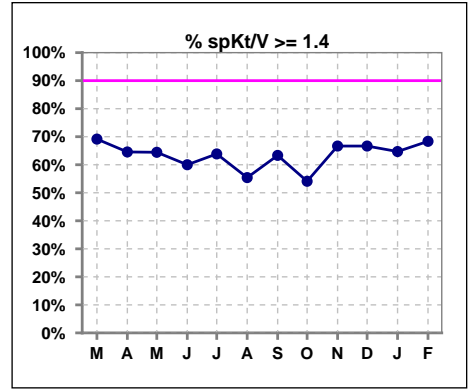
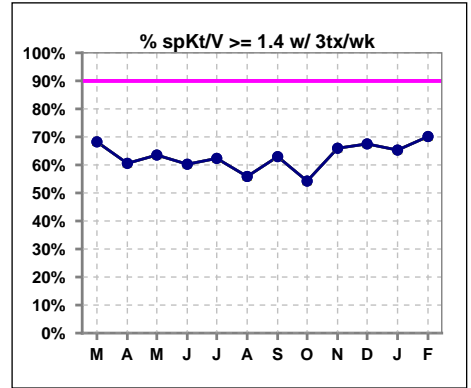


**I. ADEQUACY OF DIALYSIS**

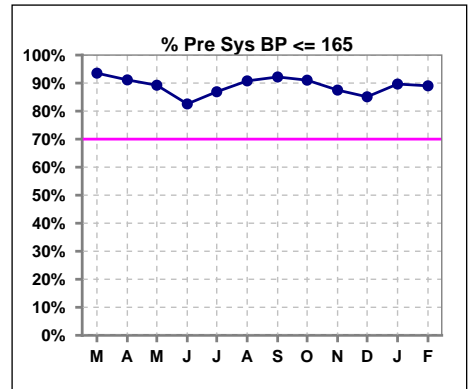
	Mar	Apr	May	Jun	Jul	Aug	Sep	Oct	Nov	Dec	Jan	Feb
# spKt/V	94	79	90	85	83	74	60	61	48	42	51	79
# spKt/V >= 1.4	65	51	58	51	53	41	38	33	32	28	33	54
Pop. Mean	1.58	1.54	1.56	1.57	1.50	1.49	1.50	1.47	1.51	1.53	1.54	1.63
Std. Deviation	0.39	0.36	0.41	0.39	0.43	0.38	0.35	0.33	0.30	0.28	0.35	0.48
% spKt/V >= 1.4	69%	65%	64%	60%	64%	55%	63%	54%	67%	67%	65%	68%
% spKt/V >= 1.2	89%	89%	90%	88%	84%	86%	88%	89%	94%	95%	98%	92%



	Mar	Apr	May	Jun	Jul	Aug	Sep	Oct	Nov	Dec	Jan	Feb
# spKt/V w/ 3tx/wk	85	71	85	78	77	68	54	59	47	40	49	77
# spKt/V >= 1.4 w/3tx/wk	58	43	54	47	48	38	34	32	31	27	32	54
Pop. Mean	1.57	1.52	1.56	1.57	1.47	1.50	1.52	1.47	1.51	1.53	1.55	1.65
Std. Deviation	0.38	0.37	0.42	0.39	0.40	0.37	0.33	0.33	0.31	0.28	0.35	0.47
% spKt/V >= 1.4 w/3tx/wk	68%	61%	64%	60%	62%	56%	63%	54%	66%	68%	65%	70%



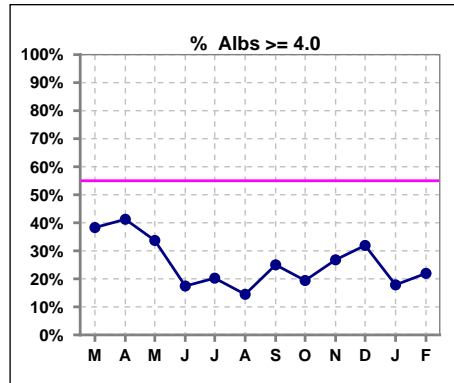
	Mar	Apr	May	Jun	Jul	Aug	Sep	Oct	Nov	Dec	Jan	Feb
# Pre Sys BP	93	79	93	86	84	76	64	67	56	47	58	82
# Pre Sys BP <= 165	89	74	83	73	73	70	59	62	50	40	52	73
Pop. Mean	140	141	140	143	139	141	141	139	144	145	144	141
Std. Deviation	15.8	16.1	19.5	19.5	20.2	18.9	17.3	17.7	21.1	15.5	17.1	17.5
%Pre Sys BP <=165	94%	91%	89%	83%	87%	91%	92%	91%	88%	85%	90%	89%



\*Albumin values use BCG method - as of July 2001

**II. NUTRITION**

	Mar	Apr	May	Jun	Jul	Aug	Sep	Oct	Nov	Dec	Jan	Feb
# Albumin	94	80	92	86	84	76	64	67	56	47	56	82
# Albumin >= 4.0	36	33	31	15	17	11	16	13	15	15	10	18
Pop. Mean	3.8	3.8	3.7	3.5	3.5	3.5	3.6	3.5	3.6	3.7	3.5	3.6
Std. Deviation	0.40	0.38	0.43	0.44	0.56	0.49	0.47	0.44	0.47	0.51	0.53	0.53
% Alb >= 4.0	38%	41%	34%	17%	20%	14%	25%	19%	27%	32%	18%	22%

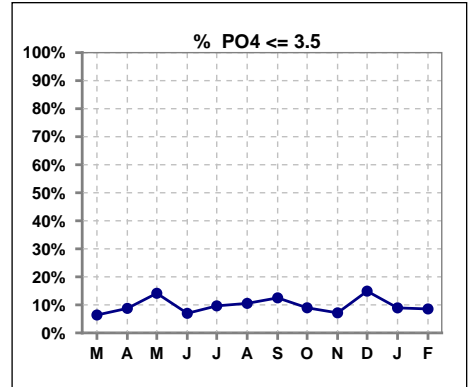


Methodology: a) All labs for 'Adequacy of Dialysis', 'Nutrition', 'Osteodystrophy', 'Anemia' and 'Diabetes' based on last value of month; b) BP's and #L processed are average of all values for month; c) Access data takes last access of month; d) Values for SGA and 'Infection Control' use most recent result.

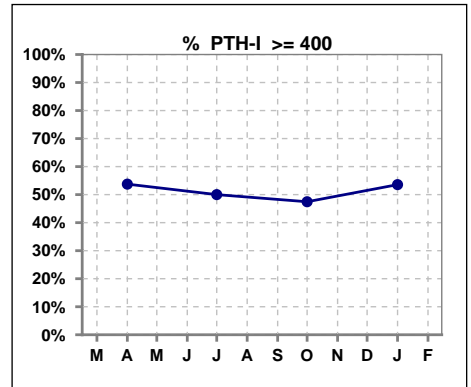
Lab methodology for PTH changed January 2012

**III. OSTEODYSTROPHY**

	Mar	Apr	May	Jun	Jul	Aug	Sep	Oct	Nov	Dec	Jan	Feb
# PO4	94	80	92	86	83	76	64	67	56	47	56	82
# PO4 <= 3.5	6	7	13	6	8	8	8	6	4	7	5	7
Pop. Mean	5.8	5.7	5.4	5.9	5.5	5.7	5.3	5.8	5.7	5.2	5.6	5.8
Std. Deviation	2.01	2.00	1.83	1.82	1.72	1.80	1.74	1.86	1.53	1.63	1.53	1.97
<b>% PO4 &lt;= 3.5</b>	<b>6%</b>	<b>9%</b>	<b>14%</b>	<b>7%</b>	<b>10%</b>	<b>11%</b>	<b>13%</b>	<b>9%</b>	<b>7%</b>	<b>15%</b>	<b>9%</b>	<b>9%</b>



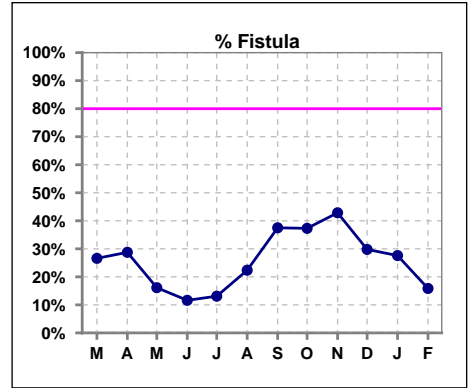
	Mar	Apr	May	Jun	Jul	Aug	Sep	Oct	Nov	Dec	Jan	Feb
# PTH-I		80			76			59			56	
# PTH-I >= 400		43			38			28			30	
Pop. Mean		513			455			459			542	
Std. Deviation		470			302			337			465	
<b>% PTH-I &gt;= 400</b>		<b>54%</b>			<b>50%</b>			<b>47%</b>			<b>54%</b>	



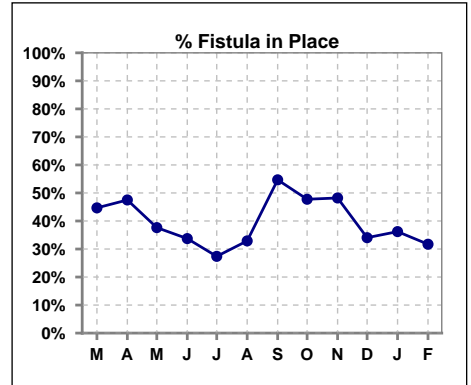
Methodology: a) All labs for 'Adequacy of Dialysis', 'Nutrition', 'Osteodystrophy', 'Anemia' and 'Diabetes' based on last value of month; b) BP's and #L processed are average of all values for month; c) Access data takes last access of month; d) Values for SGA and 'Infection Control' use most recent result.

**IV. ACCESS**

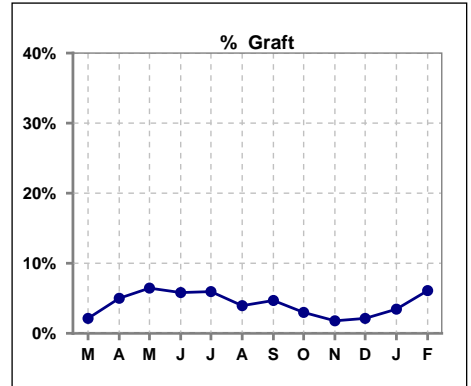
	Mar	Apr	May	Jun	Jul	Aug	Sep	Oct	Nov	Dec	Jan	Feb
<b># Access</b>	94	80	93	86	84	76	64	67	56	47	58	82
<b># Fistula</b>	25	23	15	10	11	17	24	25	24	14	16	13
<b>% Fistula</b>	27%	29%	16%	12%	13%	22%	38%	37%	43%	30%	28%	16%



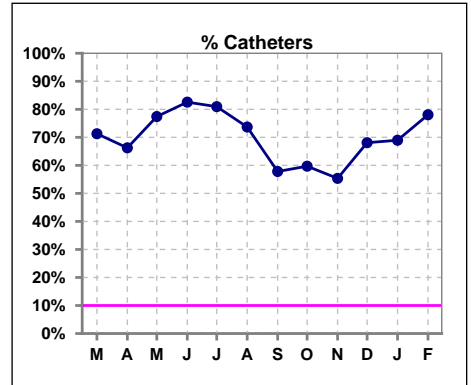
	Mar	Apr	May	Jun	Jul	Aug	Sep	Oct	Nov	Dec	Jan	Feb
<b># Patient</b>	94	80	93	86	84	76	64	67	56	47	58	82
<b># Fistula in Place</b>	42	38	35	29	23	25	35	32	27	16	21	26
<b>% Fistula in Place</b>	45%	48%	38%	34%	27%	33%	55%	48%	48%	34%	36%	32%



	Mar	Apr	May	Jun	Jul	Aug	Sep	Oct	Nov	Dec	Jan	Feb
<b># Access</b>	94	80	93	86	84	76	64	67	56	47	58	82
<b># Graft</b>	2	4	6	5	5	3	3	2	1	1	2	5
<b>% Graft</b>	2%	5%	6%	6%	6%	4%	5%	3%	2%	2%	3%	6%



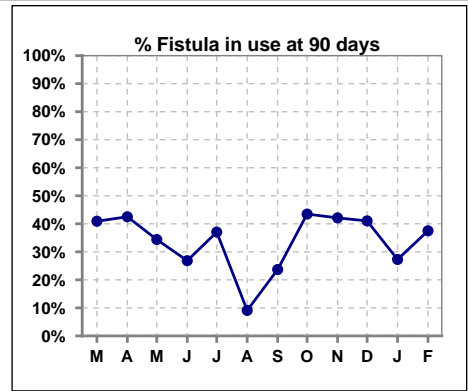
	Mar	Apr	May	Jun	Jul	Aug	Sep	Oct	Nov	Dec	Jan	Feb
<b># Access</b>	94	80	93	86	84	76	64	67	56	47	58	82
<b># Catheters</b>	67	53	72	71	68	56	37	40	31	32	40	64
<b>% Catheters</b>	71%	66%	77%	83%	81%	74%	58%	60%	55%	68%	69%	78%



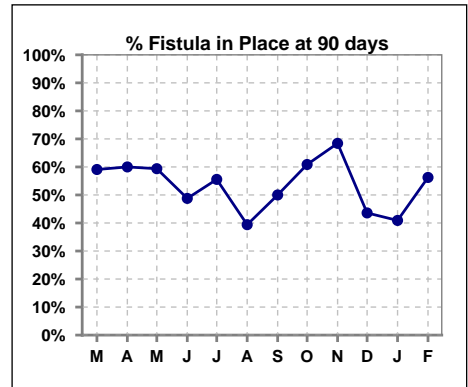
Methodology: a) All labs for 'Adequacy of Dialysis', 'Nutrition', 'Osteodystrophy', 'Anemia' and 'Diabetes' based on last value of month; b) BP's and #L processed are average of all values for month; c) Access data takes last access of month; d) Values for SGA and 'Infection Control' use most recent result.

**IV. ACCESS - CONT. Access at 90 days for those patients that reached 90 days within the month.**

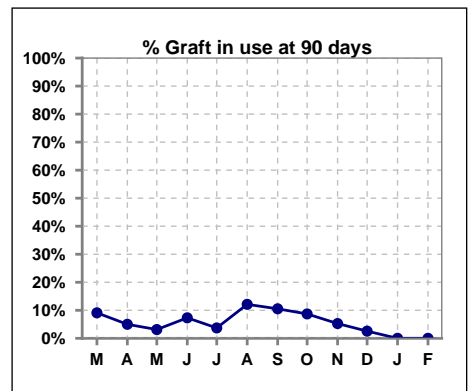
	Mar	Apr	May	Jun	Jul	Aug	Sep	Oct	Nov	Dec	Jan	Feb
<b># Patient</b>	22	40	32	41	27	33	38	23	19	39	22	16
<b># Fistula in use</b>	9	17	11	11	10	3	9	10	8	16	6	6
<b>% Fistula in use</b>	41%	43%	34%	27%	37%	9%	24%	43%	42%	41%	27%	38%



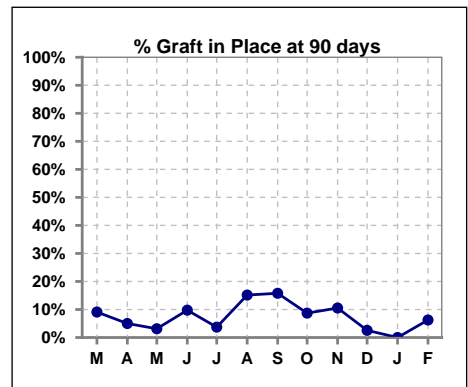
	Mar	Apr	May	Jun	Jul	Aug	Sep	Oct	Nov	Dec	Jan	Feb
<b># Patient</b>	22	40	32	41	27	33	38	23	19	39	22	16
<b># Fistula in Place</b>	13	24	19	20	15	13	19	14	13	17	9	9
<b>% Fistula in Place</b>	59%	60%	59%	49%	56%	39%	50%	61%	68%	44%	41%	56%



	Mar	Apr	May	Jun	Jul	Aug	Sep	Oct	Nov	Dec	Jan	Feb
<b># Patient</b>	22	40	32	41	27	33	38	23	19	39	22	16
<b># Graft in use</b>	2	2	1	3	1	4	4	2	1	1	0	0
<b>% Graft in use</b>	9%	5%	3%	7%	4%	12%	11%	9%	5%	3%	0%	0%



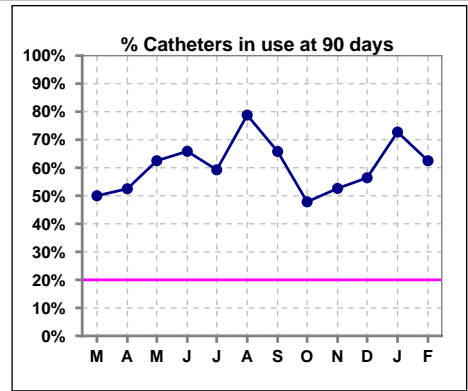
	Mar	Apr	May	Jun	Jul	Aug	Sep	Oct	Nov	Dec	Jan	Feb
<b># Patient</b>	22	40	32	41	27	33	38	23	19	39	22	16
<b># Graft in Place</b>	2	2	1	4	1	5	6	2	2	1	0	1
<b>% Graft in Place</b>	9%	5%	3%	10%	4%	15%	16%	9%	11%	3%	0%	6%



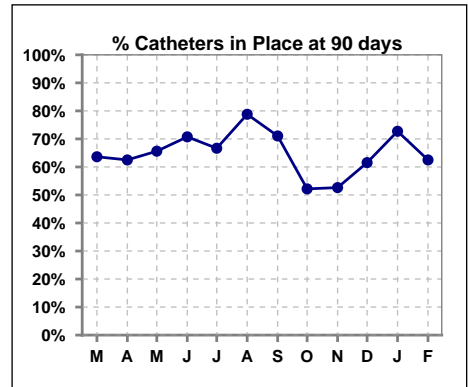
Methodology: a) All labs for 'Adequacy of Dialysis', 'Nutrition', 'Osteodystrophy', 'Anemia' and 'Diabetes' based on last value of month; b) BP's and #L processed are average of all values for month; c) Access data takes last access of month; d) Values for SGA and 'Infection Control' use most recent result.

**IV. ACCESS - CONT. Access at 90 days for those patients that reached 90 days within the month.**

	Mar	Apr	May	Jun	Jul	Aug	Sep	Oct	Nov	Dec	Jan	Feb
# Patient	22	40	32	41	27	33	38	23	19	39	22	16
# Catheters in use	11	21	20	27	16	26	25	11	10	22	16	10
<b>% Catheters in use</b>	<b>50%</b>	<b>53%</b>	<b>63%</b>	<b>66%</b>	<b>59%</b>	<b>79%</b>	<b>66%</b>	<b>48%</b>	<b>53%</b>	<b>56%</b>	<b>73%</b>	<b>63%</b>



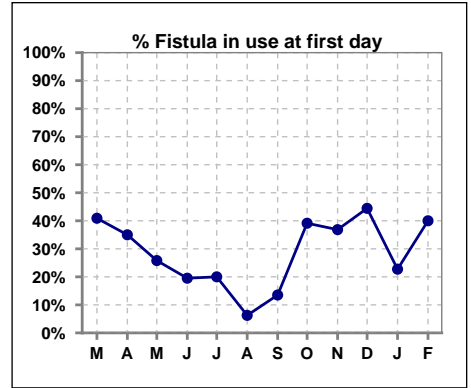
	Mar	Apr	May	Jun	Jul	Aug	Sep	Oct	Nov	Dec	Jan	Feb
# Patient	22	40	32	41	27	33	38	23	19	39	22	16
# Catheters in Place	14	25	21	29	18	26	27	12	10	24	16	10
<b>% Catheters in Place</b>	<b>64%</b>	<b>63%</b>	<b>66%</b>	<b>71%</b>	<b>67%</b>	<b>79%</b>	<b>71%</b>	<b>52%</b>	<b>53%</b>	<b>62%</b>	<b>73%</b>	<b>63%</b>



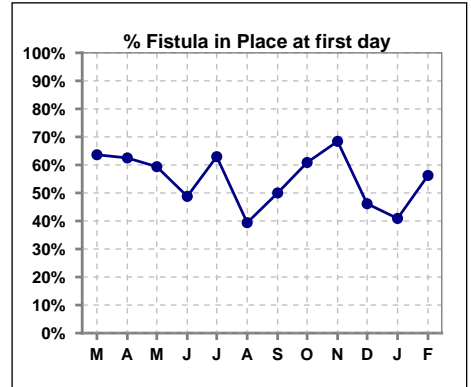
Methodology: a) All labs for 'Adequacy of Dialysis', 'Nutrition', 'Osteodystrophy', 'Anemia' and 'Diabetes' based on last value of month; b) BP's and #L processed are average of all values for month; c) Access data takes last access of month; d) Values for SGA and 'Infection Control' use most recent result.

**IV. ACCESS - CONT. Access at first day for those patients that reached 90 days within the month.**

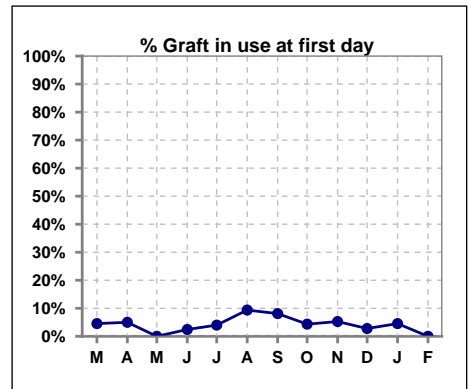
	Mar	Apr	May	Jun	Jul	Aug	Sep	Oct	Nov	Dec	Jan	Feb
# Patient	22	40	31	41	25	32	37	23	19	36	22	15
# Fistula in use	9	14	8	8	5	2	5	9	7	16	5	6
<b>% Fistula in use</b>	<b>41%</b>	<b>35%</b>	<b>26%</b>	<b>20%</b>	<b>20%</b>	<b>6%</b>	<b>14%</b>	<b>39%</b>	<b>37%</b>	<b>44%</b>	<b>23%</b>	<b>40%</b>



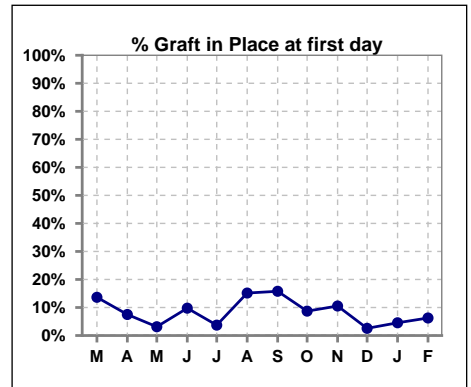
	Mar	Apr	May	Jun	Jul	Aug	Sep	Oct	Nov	Dec	Jan	Feb
# Patient	22	40	32	41	27	33	38	23	19	39	22	16
# Fistula in Place	14	25	19	20	17	13	19	14	13	18	9	9
<b>% Fistula in Place</b>	<b>64%</b>	<b>63%</b>	<b>59%</b>	<b>49%</b>	<b>63%</b>	<b>39%</b>	<b>50%</b>	<b>61%</b>	<b>68%</b>	<b>46%</b>	<b>41%</b>	<b>56%</b>



	Mar	Apr	May	Jun	Jul	Aug	Sep	Oct	Nov	Dec	Jan	Feb
# Patient	22	40	31	41	25	32	37	23	19	36	22	15
# Graft in use	1	2	0	1	1	3	3	1	1	1	1	0
<b>% Graft in use</b>	<b>5%</b>	<b>5%</b>	<b>0%</b>	<b>2%</b>	<b>4%</b>	<b>9%</b>	<b>8%</b>	<b>4%</b>	<b>5%</b>	<b>3%</b>	<b>5%</b>	<b>0%</b>



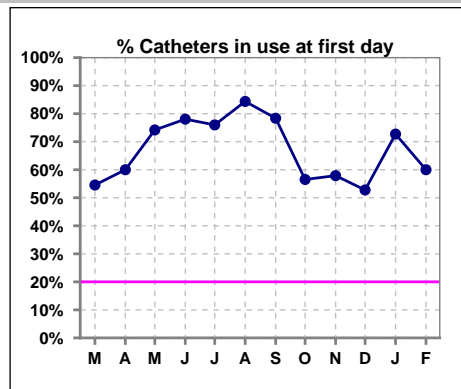
	Mar	Apr	May	Jun	Jul	Aug	Sep	Oct	Nov	Dec	Jan	Feb
# Patient	22	40	32	41	27	33	38	23	19	39	22	16
# Graft in Place	3	3	1	4	1	5	6	2	2	1	1	1
<b>% Graft in Place</b>	<b>14%</b>	<b>8%</b>	<b>3%</b>	<b>10%</b>	<b>4%</b>	<b>15%</b>	<b>16%</b>	<b>9%</b>	<b>11%</b>	<b>3%</b>	<b>5%</b>	<b>6%</b>



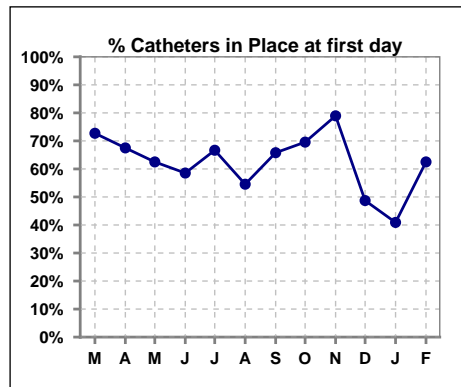
Methodology: a) All labs for 'Adequacy of Dialysis', 'Nutrition', 'Osteodystrophy', 'Anemia' and 'Diabetes' based on last value of month; b) BP's and #L processed are average of all values for month; c) Access data takes last access of month; d) Values for SGA and 'Infection Control' use most recent result.

**IV. ACCESS - CONT. Access at first day for those patients that reached 90 days within the month.**

	Mar	Apr	May	Jun	Jul	Aug	Sep	Oct	Nov	Dec	Jan	Feb
# Patient	22	40	31	41	25	32	37	23	19	36	22	15
# Catheters in use	12	24	23	32	19	27	29	13	11	19	16	9
<b>% Catheters in use</b>	<b>55%</b>	<b>60%</b>	<b>74%</b>	<b>78%</b>	<b>76%</b>	<b>84%</b>	<b>78%</b>	<b>57%</b>	<b>58%</b>	<b>53%</b>	<b>73%</b>	<b>60%</b>



	Mar	Apr	May	Jun	Jul	Aug	Sep	Oct	Nov	Dec	Jan	Feb
# Patient	22	40	32	41	27	33	38	23	19	39	22	16
# Catheters in Place	16	27	20	24	18	18	25	16	15	19	9	10
<b>% Catheters in Place</b>	<b>73%</b>	<b>68%</b>	<b>63%</b>	<b>59%</b>	<b>67%</b>	<b>55%</b>	<b>66%</b>	<b>70%</b>	<b>79%</b>	<b>49%</b>	<b>41%</b>	<b>63%</b>



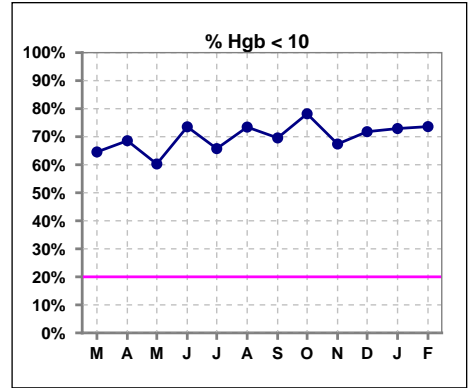
Methodology: a) All labs for 'Adequacy of Dialysis', 'Nutrition', 'Osteodystrophy', 'Anemia' and 'Diabetes' based on last value of month; b) BP's and #L processed are average of all values for month; c) Access data takes last access of month; d) Values for SGA and 'Infection Control' use most recent result.



**V. ANEMIA**

	Mar	Apr	May	Jun	Jul	Aug	Sep	Oct	Nov	Dec	Jan	Feb
# Hgb	79	70	73	68	73	64	46	55	46	39	48	72
# Hgb <= 10	51	48	44	50	48	47	32	43	31	28	35	53
Pop. Mean	9.4	9.6	9.6	9.1	9.5	9.3	9.3	9.3	9.6	9.3	9.4	9.3
Std. Deviation	1.3	1.3	1.4	1.5	1.4	1.4	1.1	1.4	1.3	1.2	1.2	1.2
% Hgb <= 10	65%	69%	60%	74%	66%	73%	70%	78%	67%	72%	73%	74%

Note: Excludes patients who received no ESA in month.



	Mar	Apr	May	Jun	Jul	Aug	Sep	Oct	Nov	Dec	Jan	Feb
# Hgb	79	70	73	68	73	64	46	55	46	39	48	72
# Hgb >= 12	3	2	4	0	2	1	0	2	1	1	0	1
Pop. Mean	9.4	9.6	9.6	9.1	9.5	9.3	9.3	9.3	9.6	9.3	9.4	9.3
Std. Deviation	1.3	1.3	1.4	1.5	1.4	1.4	1.1	1.4	1.3	1.2	1.2	1.2
% Hgb >= 12	4%	3%	5%	0%	3%	2%	0%	4%	2%	3%	0%	1%

Note: Excludes patients who received no ESA in month.

