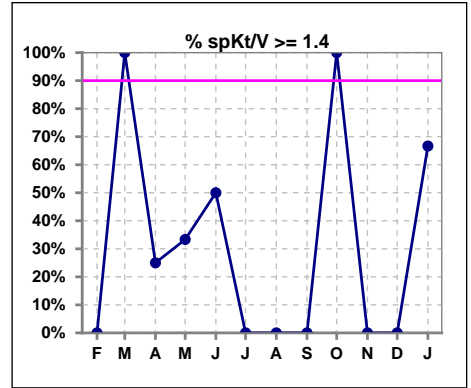
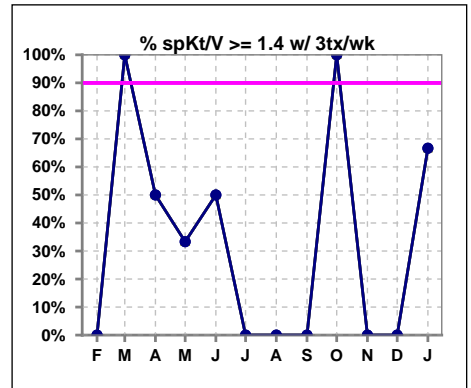


I. ADEQUACY OF DIALYSIS

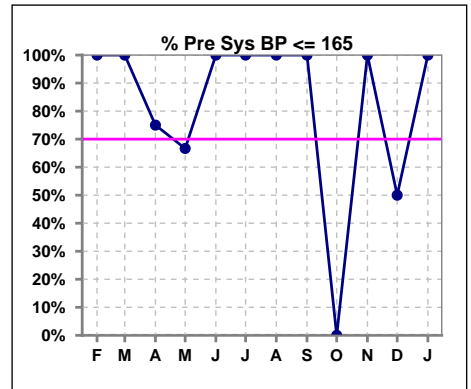
	Feb	Mar	Apr	May	Jun	Jul	Aug	Sep	Oct	Nov	Dec	Jan
# spKt/V	0	1	4	3	2	1	1	1	2	2	1	3
# spKt/V >= 1.4	0	1	1	1	1	0	0	0	2	0	0	2
Pop. Mean	0	1.51	1.53	1.61	1.94	1.22	1.24	1.20	1.43	1.26	1.22	1.60
Std. Deviation	0	0	0.47	0.59	0.81	0	0	0	0.04	0.06	0	0.31
% spKt/V >= 1.4	0%	100%	25%	33%	50%	0%	0%	0%	100%	0%	0%	67%
% spKt/V >= 1.2	0%	100%	75%	100%	100%	100%	100%	100%	100%	100%	100%	100%



	Feb	Mar	Apr	May	Jun	Jul	Aug	Sep	Oct	Nov	Dec	Jan
# spKt/V w/ 3tx/wk	0	1	2	3	2	1	1	1	2	1	1	3
# spKt/V >= 1.4 w/3tx/wk	0	1	1	1	1	0	0	0	2	0	0	2
Pop. Mean	0	1.51	1.78	1.61	1.94	1.22	1.24	1.20	1.43	1.22	1.22	1.60
Std. Deviation	0	0	0.63	0.59	0.81	0	0	0	0.04	0	0	0.31
% spKt/V >= 1.4 w/3tx/wk	0%	100%	50%	33%	50%	0%	0%	0%	100%	0%	0%	67%



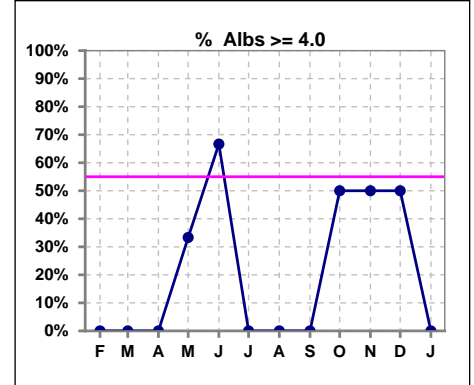
	Feb	Mar	Apr	May	Jun	Jul	Aug	Sep	Oct	Nov	Dec	Jan
# Pre Sys BP	1	2	4	3	3	2	2	2	2	2	2	3
# Pre Sys BP <= 165	1	2	4	2	3	2	2	2	0	2	1	3
Pop. Mean	123	139	147	159	152	147	157	152	174	135	150	135
Std. Deviation	0	14.1	20.3	14.7	10.1	5.7	4.9	4.2	9.2	41.0	48.1	21.5
% Pre Sys BP <= 165	100%	100%	75%	67%	100%	100%	100%	100%	0%	100%	50%	100%



*Albumin values use BCG method - as of July 2001

II. NUTRITION

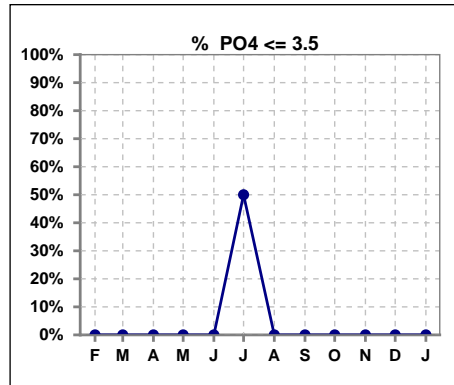
	Feb	Mar	Apr	May	Jun	Jul	Aug	Sep	Oct	Nov	Dec	Jan
# Albumin	1	2	4	3	3	2	2	2	2	2	2	3
# Albumin >= 4.0	0	0	0	1	2	0	0	0	1	1	1	0
Pop. Mean	3.5	3.8	3.7	3.8	3.9	3.8	3.6	3.5	3.9	3.6	3.6	3.6
Std. Deviation	0	0.21	0.26	0.31	0.12	0	0.14	0.07	0.42	0.99	0.64	0.30
% Alb >= 4.0	0%	0%	0%	33%	67%	0%	0%	0%	50%	50%	50%	0%



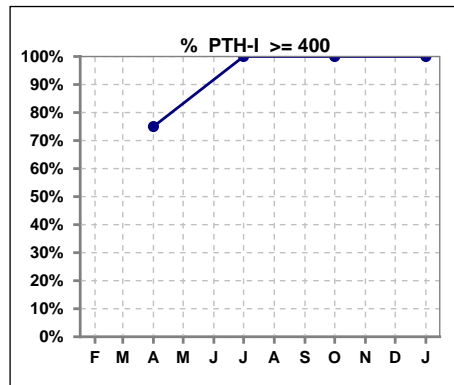
Lab methodology for PTH changed January 2012

III. OSTEODYSTROPHY

	Feb	Mar	Apr	May	Jun	Jul	Aug	Sep	Oct	Nov	Dec	Jan
# PO4	1	2	4	3	3	2	2	2	2	2	2	3
# PO4 <= 3.5	0	0	0	0	0	1	0	0	0	0	0	0
Pop. Mean	4.3	4.9	5.4	5.4	5.8	4.6	6.4	7.0	6.0	7.6	6.8	6.0
Std. Deviation	0	0.71	0.36	0.62	0.86	1.98	0.14	2.90	0.92	0.42	0.35	1.18
% PO4 <= 3.5	0%	0%	0%	0%	0%	50%	0%	0%	0%	0%	0%	0%



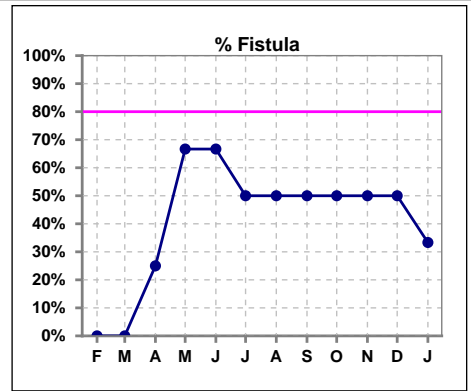
	Feb	Mar	Apr	May	Jun	Jul	Aug	Sep	Oct	Nov	Dec	Jan
# PTH-I			4			1			1			3
# PTH-I >= 400			3			1			1			3
Pop. Mean			521			611			694			511
Std. Deviation			299			0			0			96
% PTH-I >= 400			75%			100%			100%			100%



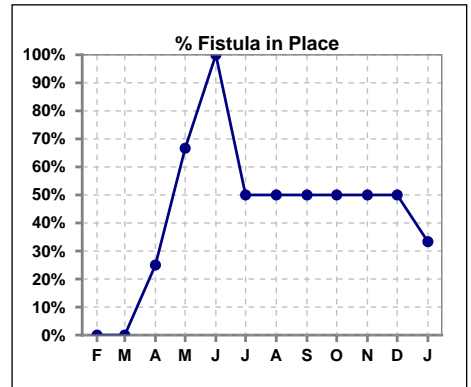
Methodology: a) All labs for 'Adequacy of Dialysis', 'Nutrition', 'Osteodystrophy', 'Anemia' and 'Diabetes' based on last value of month; b) BP's and #L processed are average of all values for month; c) Access data takes last access of month; d) Values for SGA and 'Infection Control' use most recent result.

IV. ACCESS

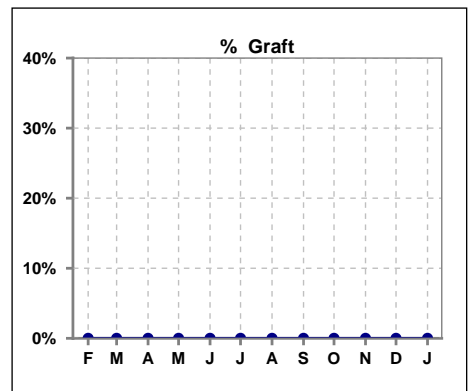
	Feb	Mar	Apr	May	Jun	Jul	Aug	Sep	Oct	Nov	Dec	Jan
# Access	1	2	4	3	3	2	2	2	2	2	2	3
# Fistula	0	0	1	2	2	1	1	1	1	1	1	1
% Fistula	0%	0%	25%	67%	67%	50%	50%	50%	50%	50%	50%	33%



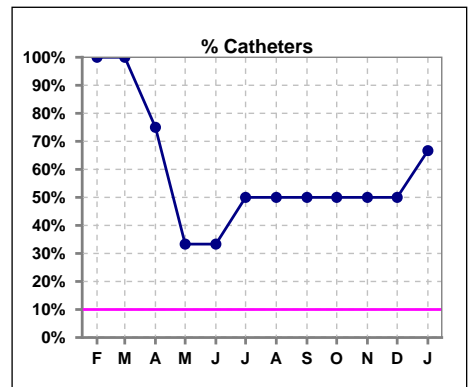
	Feb	Mar	Apr	May	Jun	Jul	Aug	Sep	Oct	Nov	Dec	Jan
# Patient	1	2	4	3	3	2	2	2	2	2	2	3
# Fistula in Place	0	0	1	2	3	1	1	1	1	1	1	1
% Fistula in Place	0%	0%	25%	67%	100%	50%	50%	50%	50%	50%	50%	33%



	Feb	Mar	Apr	May	Jun	Jul	Aug	Sep	Oct	Nov	Dec	Jan
# Access	1	2	4	3	3	2	2	2	2	2	2	3
# Graft	0	0	0	0	0	0	0	0	0	0	0	0
% Graft	0%	0%	0%	0%	0%	0%	0%	0%	0%	0%	0%	0%



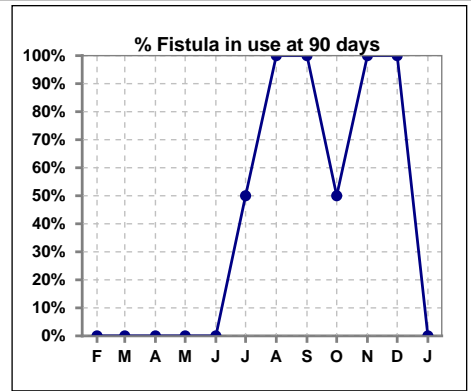
	Feb	Mar	Apr	May	Jun	Jul	Aug	Sep	Oct	Nov	Dec	Jan
# Access	1	2	4	3	3	2	2	2	2	2	2	3
# Catheters	1	2	3	1	1	1	1	1	1	1	1	2
% Catheters	100%	100%	75%	33%	33%	50%	50%	50%	50%	50%	50%	67%



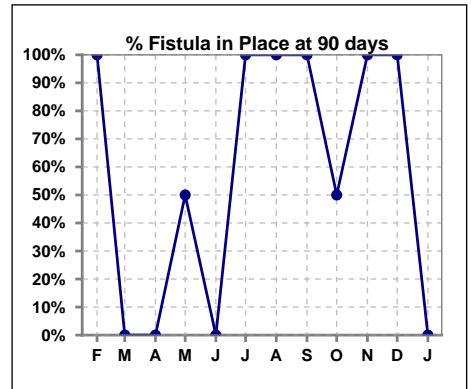
Methodology: a) All labs for 'Adequacy of Dialysis', 'Nutrition', 'Osteodystrophy', 'Anemia' and 'Diabetes' based on last value of month; b) BP's and #L processed are average of all values for month; c) Access data takes last access of month; d) Values for SGA and 'Infection Control' use most recent result.

IV. ACCESS - CONT. Access at 90 days for those patients that reached 90 days within the month.

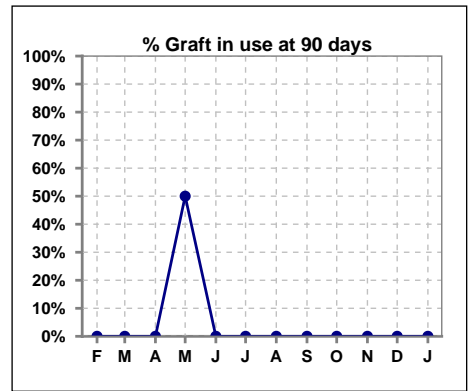
	Feb	Mar	Apr	May	Jun	Jul	Aug	Sep	Oct	Nov	Dec	Jan
# Patient	1	0	1	2	1	2	1	1	2	1	1	0
# Fistula in use	0	0	0	0	0	1	1	1	1	1	1	0
% Fistula in use	0%	0%	0%	0%	0%	50%	100%	100%	50%	100%	100%	0%



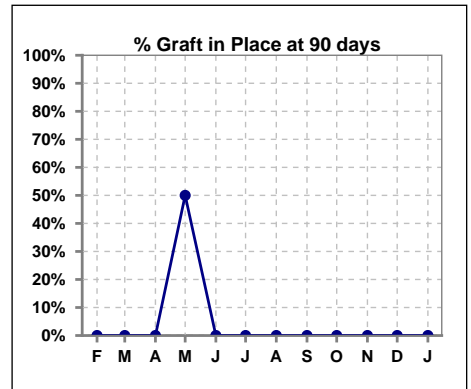
	Feb	Mar	Apr	May	Jun	Jul	Aug	Sep	Oct	Nov	Dec	Jan
# Patient	1	0	1	2	1	2	1	1	2	1	1	0
# Fistula in Place	1	0	0	1	0	2	1	1	1	1	1	0
% Fistula in Place	100%	0%	0%	50%	0%	100%	100%	100%	50%	100%	100%	0%



	Feb	Mar	Apr	May	Jun	Jul	Aug	Sep	Oct	Nov	Dec	Jan
# Patient	1	0	1	2	1	2	1	1	2	1	1	0
# Graft in use	0	0	0	1	0	0	0	0	0	0	0	0
% Graft in use	0%	0%	0%	50%	0%	0%	0%	0%	0%	0%	0%	0%



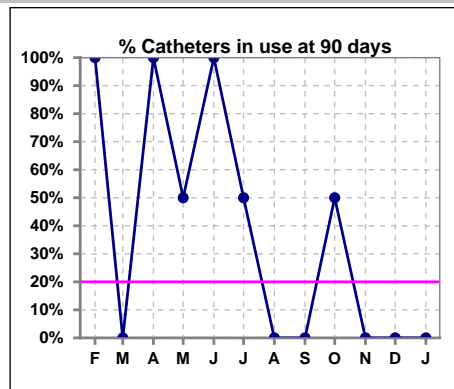
	Feb	Mar	Apr	May	Jun	Jul	Aug	Sep	Oct	Nov	Dec	Jan
# Patient	1	0	1	2	1	2	1	1	2	1	1	0
# Graft in Place	0	0	0	1	0	0	0	0	0	0	0	0
% Graft in Place	0%	0%	0%	50%	0%	0%	0%	0%	0%	0%	0%	0%



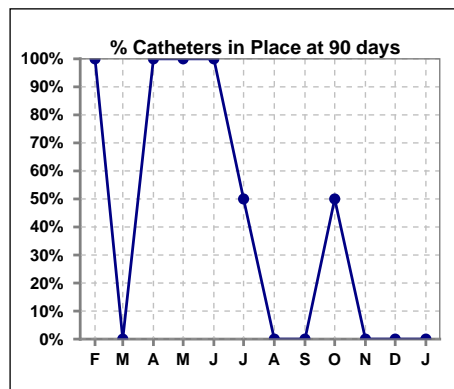
Methodology: a) All labs for 'Adequacy of Dialysis', 'Nutrition', 'Osteodystrophy', 'Anemia' and 'Diabetes' based on last value of month; b) BP's and #L processed are average of all values for month; c) Access data takes last access of month; d) Values for SGA and 'Infection Control' use most recent result.

IV. ACCESS - CONT. Access at 90 days for those patients that reached 90 days within the month.

	Feb	Mar	Apr	May	Jun	Jul	Aug	Sep	Oct	Nov	Dec	Jan
# Patient	1	0	1	2	1	2	1	1	2	1	1	0
# Catheters in use	1	0	1	1	1	1	0	0	1	0	0	0
% Catheters in use	100%	0%	100%	50%	100%	50%	0%	0%	50%	0%	0%	0%



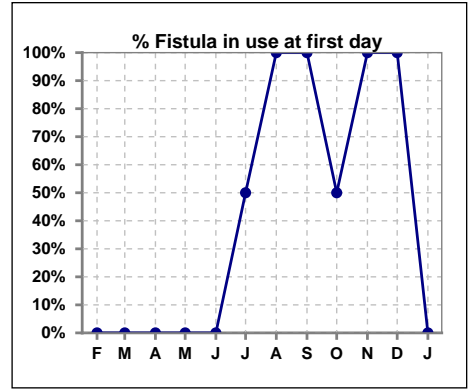
	Feb	Mar	Apr	May	Jun	Jul	Aug	Sep	Oct	Nov	Dec	Jan
# Patient	1	0	1	2	1	2	1	1	2	1	1	0
# Catheters in Place	1	0	1	2	1	1	0	0	1	0	0	0
% Catheters in Place	100%	0%	100%	100%	100%	50%	0%	0%	50%	0%	0%	0%



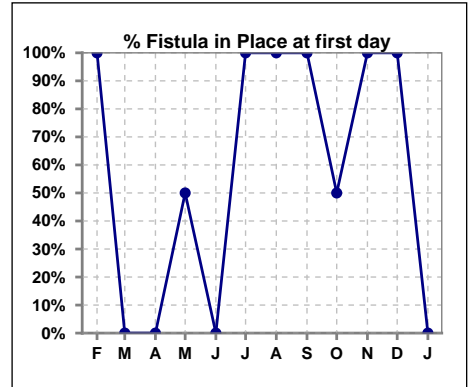
Methodology: a) All labs for 'Adequacy of Dialysis', 'Nutrition', 'Osteodystrophy', 'Anemia' and 'Diabetes' based on last value of month; b) BP's and #L processed are average of all values for month; c) Access data takes last access of month; d) Values for SGA and 'Infection Control' use most recent result.

IV. ACCESS - CONT. Access at first day for those patients that reached 90 days within the month.

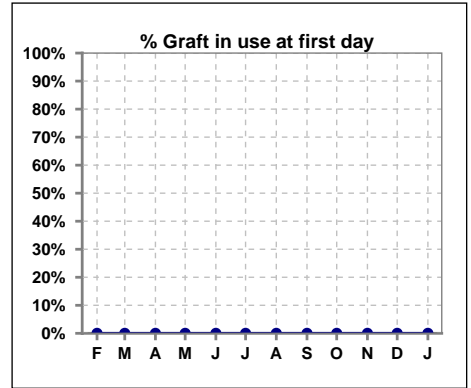
	Feb	Mar	Apr	May	Jun	Jul	Aug	Sep	Oct	Nov	Dec	Jan
# Patient	1	0	1	2	1	2	1	1	2	1	1	0
# Fistula in use	0	0	0	0	0	1	1	1	1	1	1	0
% Fistula in use	0%	0%	0%	0%	0%	50%	100%	100%	50%	100%	100%	0%



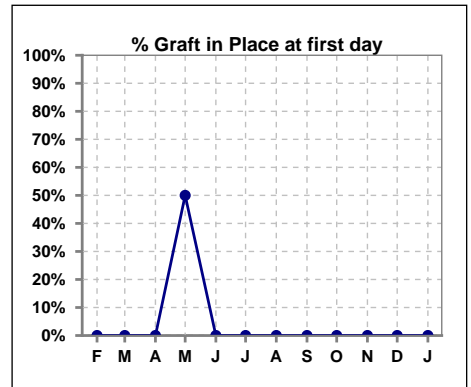
	Feb	Mar	Apr	May	Jun	Jul	Aug	Sep	Oct	Nov	Dec	Jan
# Patient	1	0	1	2	1	2	1	1	2	1	1	0
# Fistula in Place	1	0	0	1	0	2	1	1	1	1	1	0
% Fistula in Place	100%	0%	0%	50%	0%	100%	100%	100%	50%	100%	100%	0%



	Feb	Mar	Apr	May	Jun	Jul	Aug	Sep	Oct	Nov	Dec	Jan
# Patient	1	0	1	2	1	2	1	1	2	1	1	0
# Graft in use	0	0	0	0	0	0	0	0	0	0	0	0
% Graft in use	0%	0%	0%	0%	0%	0%	0%	0%	0%	0%	0%	0%



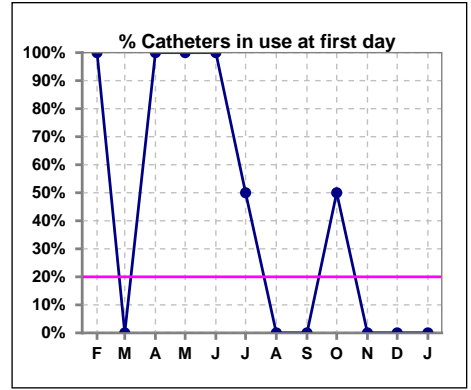
	Feb	Mar	Apr	May	Jun	Jul	Aug	Sep	Oct	Nov	Dec	Jan
# Patient	1	0	1	2	1	2	1	1	2	1	1	0
# Graft in Place	0	0	0	1	0	0	0	0	0	0	0	0
% Graft in Place	0%	0%	0%	50%	0%	0%	0%	0%	0%	0%	0%	0%



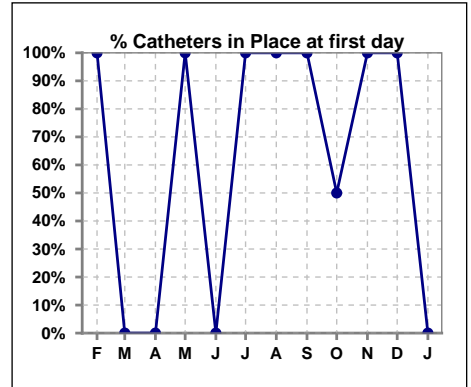
Methodology: a) All labs for 'Adequacy of Dialysis', 'Nutrition', 'Osteodystrophy', 'Anemia' and 'Diabetes' based on last value of month; b) BP's and #L processed are average of all values for month; c) Access data takes last access of month; d) Values for SGA and 'Infection Control' use most recent result.

IV. ACCESS - CONT. Access at first day for those patients that reached 90 days within the month.

	Feb	Mar	Apr	May	Jun	Jul	Aug	Sep	Oct	Nov	Dec	Jan
# Patient	1	0	1	2	1	2	1	1	2	1	1	0
# Catheters in use	1	0	1	2	1	1	0	0	1	0	0	0
% Catheters in use	100%	0%	100%	100%	100%	50%	0%	0%	50%	0%	0%	0%



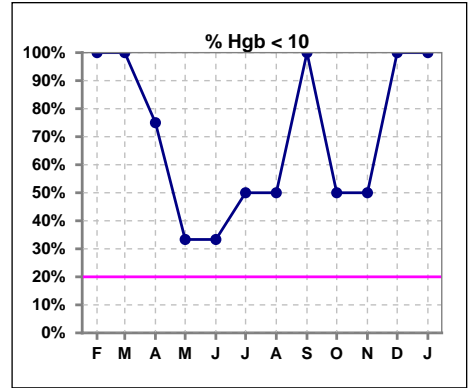
	Feb	Mar	Apr	May	Jun	Jul	Aug	Sep	Oct	Nov	Dec	Jan
# Patient	1	0	1	2	1	2	1	1	2	1	1	0
# Catheters in Place	1	0	0	2	0	2	1	1	1	1	1	0
% Catheters in Place	100%	0%	0%	100%	0%	100%	100%	100%	50%	100%	100%	0%



V. ANEMIA

	Feb	Mar	Apr	May	Jun	Jul	Aug	Sep	Oct	Nov	Dec	Jan
# Hgb	1	2	4	3	3	2	2	2	2	2	2	3
# Hgb <= 10	1	2	3	1	1	1	1	2	1	1	2	3
Pop. Mean	7.2	8.1	9.1	10.3	10.0	9.3	9.5	7.7	9.2	9.6	9.0	9.3
Std. Deviation	0	0.3	1.4	0.4	1.2	1.7	2.1	1.9	2.2	2.2	0.6	0.6
% Hgb <= 10	100%	100%	75%	33%	33%	50%	50%	100%	50%	50%	100%	100%

Note: Excludes patients who received no ESA in month.



	Feb	Mar	Apr	May	Jun	Jul	Aug	Sep	Oct	Nov	Dec	Jan
# Hgb	1	2	4	3	3	2	2	2	2	2	2	3
# Hgb >= 12	0	0	0	0	0	0	0	0	0	0	0	0
Pop. Mean	7.2	8.1	9.1	10.3	10.0	9.3	9.5	7.7	9.2	9.6	9.0	9.3
Std. Deviation	0	0.3	1.4	0.4	1.2	1.7	2.1	1.9	2.2	2.2	0.6	0.6
% Hgb >= 12	0%	0%	0%	0%	0%	0%	0%	0%	0%	0%	0%	0%

Note: Excludes patients who received no ESA in month.

