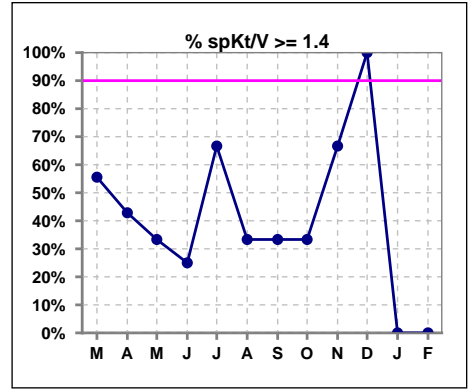
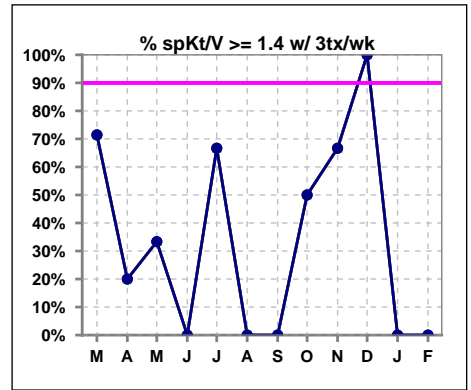


I. ADEQUACY OF DIALYSIS

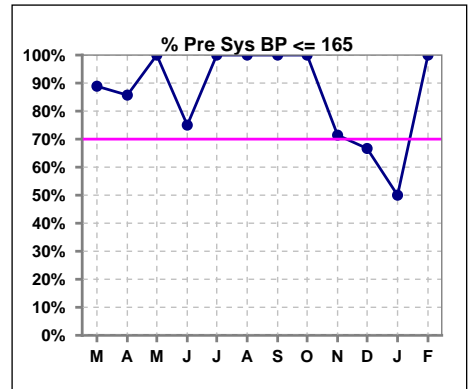
	Mar	Apr	May	Jun	Jul	Aug	Sep	Oct	Nov	Dec	Jan	Feb
# spKt/V	9	7	3	4	3	3	3	3	3	2	1	0
# spKt/V >= 1.4	5	3	1	1	2	1	1	1	2	2	0	0
Pop. Mean	1.43	1.28	1.36	1.24	1.43	1.34	1.25	1.28	1.68	1.67	1.20	0
Std. Deviation	0.37	0.30	0.18	0.44	0.27	0.60	0.78	0.18	0.50	0.01	0	0
% spKt/V >= 1.4	56%	43%	33%	25%	67%	33%	33%	33%	67%	100%	0%	0%
% spKt/V >= 1.2	78%	71%	100%	25%	67%	33%	33%	67%	100%	100%	100%	0%



	Mar	Apr	May	Jun	Jul	Aug	Sep	Oct	Nov	Dec	Jan	Feb
# spKt/V w/ 3tx/wk	7	5	3	3	3	2	1	2	3	1	1	0
# spKt/V >= 1.4 w/3tx/wk	5	1	1	0	2	0	0	1	2	1	0	0
Pop. Mean	1.51	1.18	1.36	1.02	1.43	1.00	1.13	1.36	1.68	1.66	1.20	0
Std. Deviation	0.38	0.32	0.17	0.10	0.27	0.08	0	0.18	0.50	0	0	0
% spKt/V >= 1.4 w/3tx/wk	20%	33%	0%	0%	67%	0%	0%	50%	67%	100%	0%	0%



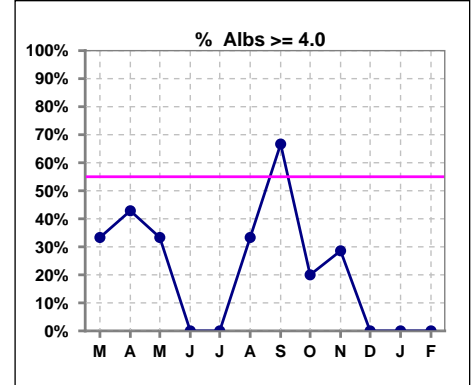
	Mar	Apr	May	Jun	Jul	Aug	Sep	Oct	Nov	Dec	Jan	Feb
# Pre Sys BP	9	7	3	4	3	3	3	5	7	3	2	1
# Pre Sys BP <= 165	8	6	3	3	3	3	3	5	5	2	1	1
Pop. Mean	138	141	150	148	141	147	138	140	156	159	157	123
Std. Deviation	13.5	14.9	6.7	20.7	8.1	11.6	5.0	12.9	13.5	15.3	20.5	0
% Pre Sys BP <= 165	89%	86%	100%	75%	100%	100%	100%	100%	71%	67%	50%	100%



*Albumin values use BCG method - as of July 2001

II. NUTRITION

	Mar	Apr	May	Jun	Jul	Aug	Sep	Oct	Nov	Dec	Jan	Feb
# Albumin	9	7	3	4	3	3	3	5	7	3	2	1
# Albumin >= 4.0	3	3	1	0	0	1	2	1	2	0	0	0
Pop. Mean	3.8	3.7	3.7	3.4	3.4	3.6	3.8	3.6	3.5	3.6	3.7	3.5
Std. Deviation	0.29	0.46	0.50	0.35	0.35	0.44	0.35	0.35	0.55	0.38	0.35	0
% Alb >= 4.0	33%	43%	33%	0%	0%	33%	67%	20%	29%	0%	0%	0%

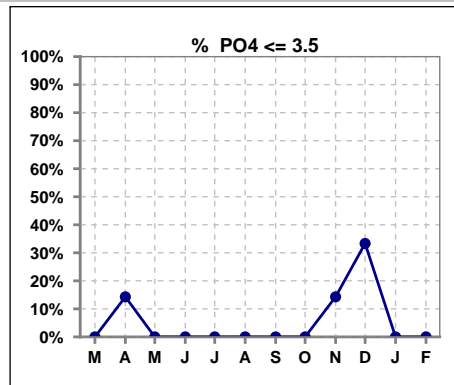


Methodology: a) All labs for 'Adequacy of Dialysis', 'Nutrition', 'Osteodystrophy', 'Anemia' and 'Diabetes' based on last value of month; b) BP's and #L processed are average of all values for month; c) Access data takes last access of month; d) Values for SGA and 'Infection Control' use most recent result.

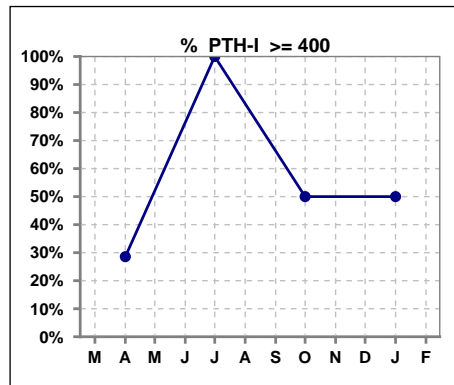
Lab methodology for PTH changed January 2012

III. OSTEODYSTROPHY

	Mar	Apr	May	Jun	Jul	Aug	Sep	Oct	Nov	Dec	Jan	Feb
# PO4	9	7	3	4	3	3	3	5	7	3	2	1
# PO4 <= 3.5	0	1	0	0	0	0	0	0	1	1	0	0
Pop. Mean	5.9	5.3	6.3	6.2	5.6	7.0	6.8	5.9	5.6	5.2	4.8	4.3
Std. Deviation	1.76	2.29	3.50	1.76	0.50	2.26	1.96	1.78	1.86	2.31	0.92	0
% PO4 <= 3.5	0%	14%	0%	0%	0%	0%	0%	0%	14%	33%	0%	0%



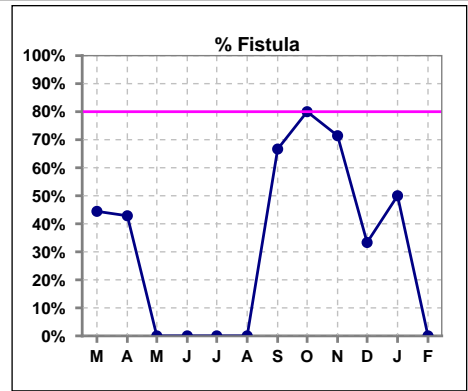
	Mar	Apr	May	Jun	Jul	Aug	Sep	Oct	Nov	Dec	Jan	Feb
# PTH-I		7			2			4			2	
# PTH-I >= 400		2			2			2			1	
Pop. Mean		376			655			527			322	
Std. Deviation		276			332			423			115	
% PTH-I >= 400		29%			100%			50%			50%	



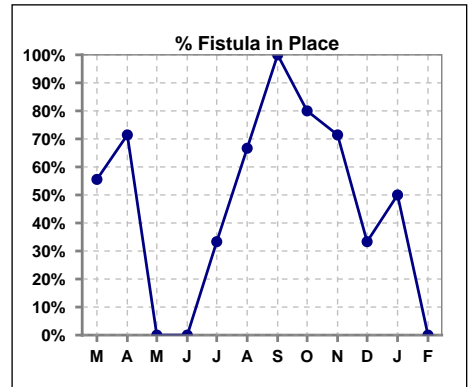
Methodology: a) All labs for 'Adequacy of Dialysis', 'Nutrition', 'Osteodystrophy', 'Anemia' and 'Diabetes' based on last value of month; b) BP's and #L processed are average of all values for month; c) Access data takes last access of month; d) Values for SGA and 'Infection Control' use most recent result.

IV. ACCESS

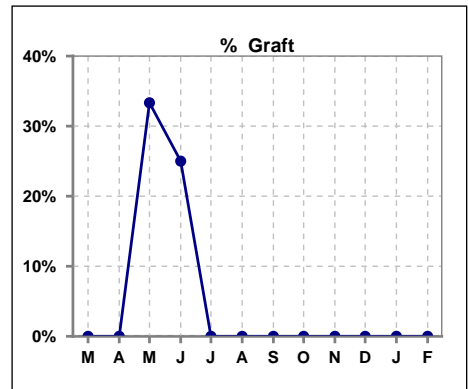
	Mar	Apr	May	Jun	Jul	Aug	Sep	Oct	Nov	Dec	Jan	Feb
# Access	9	7	3	4	3	3	3	5	7	3	2	1
# Fistula	4	3	0	0	0	0	2	4	5	1	1	0
% Fistula	44%	43%	0%	0%	0%	0%	67%	80%	71%	33%	50%	0%



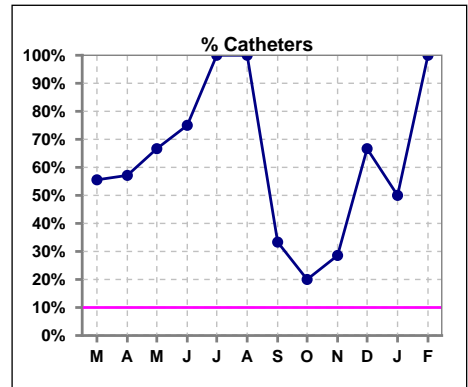
	Mar	Apr	May	Jun	Jul	Aug	Sep	Oct	Nov	Dec	Jan	Feb
# Patient	9	7	3	4	3	3	3	5	7	3	2	1
# Fistula in Place	5	5	0	0	1	2	3	4	5	1	1	0
% Fistula in Place	56%	71%	0%	0%	33%	67%	100%	80%	71%	33%	50%	0%



	Mar	Apr	May	Jun	Jul	Aug	Sep	Oct	Nov	Dec	Jan	Feb
# Access	9	7	3	4	3	3	3	5	7	3	2	1
# Graft	0	0	1	1	0	0	0	0	0	0	0	0
% Graft	0%	0%	33%	25%	0%	0%	0%	0%	0%	0%	0%	0%



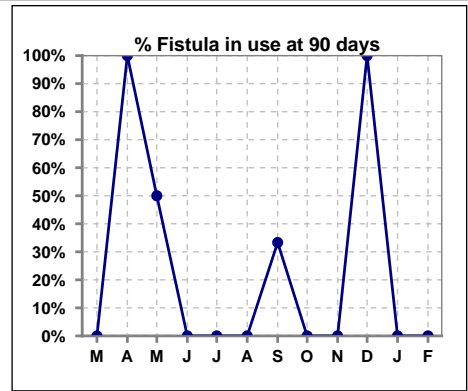
	Mar	Apr	May	Jun	Jul	Aug	Sep	Oct	Nov	Dec	Jan	Feb
# Access	9	7	3	4	3	3	3	5	7	3	2	1
# Catheters	5	4	2	3	3	3	1	1	2	2	1	1
% Catheters	56%	57%	67%	75%	100%	100%	33%	20%	29%	67%	50%	100%



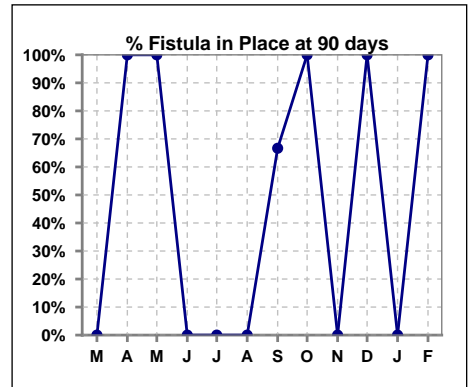
Methodology: a) All labs for 'Adequacy of Dialysis', 'Nutrition', 'Osteodystrophy', 'Anemia' and 'Diabetes' based on last value of month; b) BP's and #L processed are average of all values for month; c) Access data takes last access of month; d) Values for SGA and 'Infection Control' use most recent result.

IV. ACCESS - CONT. Access at 90 days for those patients that reached 90 days within the month.

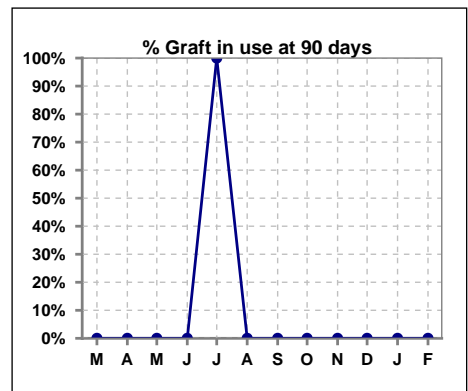
	Mar	Apr	May	Jun	Jul	Aug	Sep	Oct	Nov	Dec	Jan	Feb
# Patient	3	2	4	1	1	0	3	1	0	5	0	1
# Fistula in use	0	2	2	0	0	0	1	0	0	5	0	0
% Fistula in use	0%	100%	50%	0%	0%	0%	33%	0%	0%	100%	0%	0%



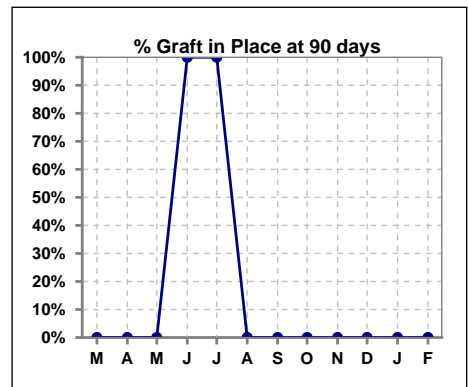
	Mar	Apr	May	Jun	Jul	Aug	Sep	Oct	Nov	Dec	Jan	Feb
# Patient	3	2	4	1	1	0	3	1	0	5	0	1
# Fistula in Place	0	2	4	0	0	0	2	1	0	5	0	1
% Fistula in Place	0%	100%	100%	0%	0%	0%	67%	100%	0%	100%	0%	100%



	Mar	Apr	May	Jun	Jul	Aug	Sep	Oct	Nov	Dec	Jan	Feb
# Patient	3	2	4	1	1	0	3	1	0	5	0	1
# Graft in use	0	0	0	0	1	0	0	0	0	0	0	0
% Graft in use	0%	0%	0%	0%	100%	0%	0%	0%	0%	0%	0%	0%



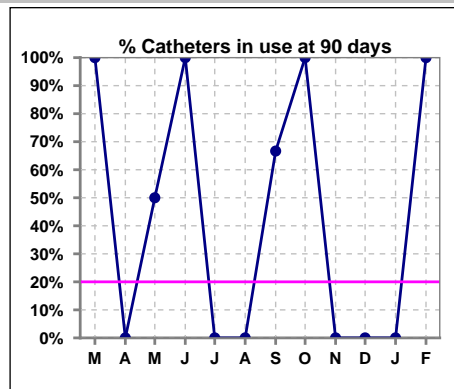
	Mar	Apr	May	Jun	Jul	Aug	Sep	Oct	Nov	Dec	Jan	Feb
# Patient	3	2	4	1	1	0	3	1	0	5	0	1
# Graft in Place	0	0	0	1	1	0	0	0	0	0	0	0
% Graft in Place	0%	0%	0%	100%	100%	0%	0%	0%	0%	0%	0%	0%



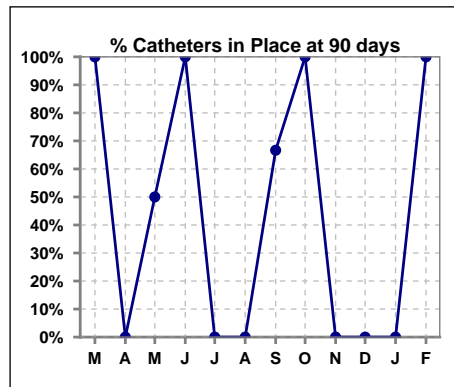
Methodology: a) All labs for 'Adequacy of Dialysis', 'Nutrition', 'Osteodystrophy', 'Anemia' and 'Diabetes' based on last value of month; b) BP's and #L processed are average of all values for month; c) Access data takes last access of month; d) Values for SGA and 'Infection Control' use most recent result.

IV. ACCESS - CONT. Access at 90 days for those patients that reached 90 days within the month.

	Mar	Apr	May	Jun	Jul	Aug	Sep	Oct	Nov	Dec	Jan	Feb
# Patient	3	2	4	1	1	0	3	1	0	5	0	1
# Catheters in use	3	0	2	1	0	0	2	1	0	0	0	1
% Catheters in use	100%	0%	50%	100%	0%	0%	67%	100%	0%	0%	0%	100%



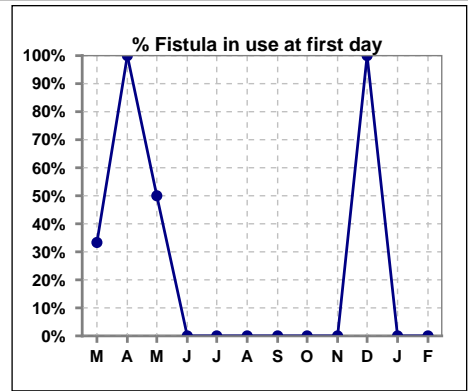
	Mar	Apr	May	Jun	Jul	Aug	Sep	Oct	Nov	Dec	Jan	Feb
# Patient	3	2	4	1	1	0	3	1	0	5	0	1
# Catheters in Place	3	0	2	1	0	0	2	1	0	0	0	1
% Catheters in Place	100%	0%	50%	100%	0%	0%	67%	100%	0%	0%	0%	100%



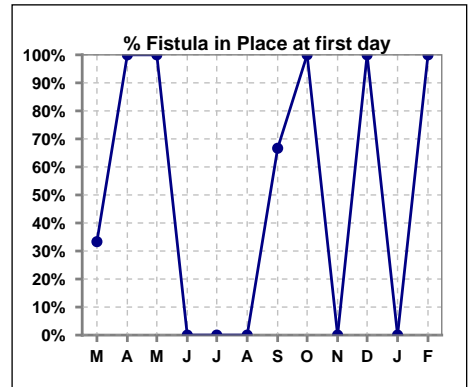
Methodology: a) All labs for 'Adequacy of Dialysis', 'Nutrition', 'Osteodystrophy', 'Anemia' and 'Diabetes' based on last value of month; b) BP's and #L processed are average of all values for month; c) Access data takes last access of month; d) Values for SGA and 'Infection Control' use most recent result.

IV. ACCESS - CONT. Access at first day for those patients that reached 90 days within the month.

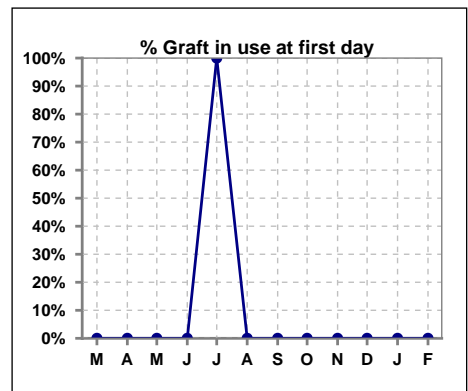
	Mar	Apr	May	Jun	Jul	Aug	Sep	Oct	Nov	Dec	Jan	Feb
# Patient	3	2	4	1	1	0	3	1	0	5	0	1
# Fistula in use	1	2	2	0	0	0	0	0	0	5	0	0
% Fistula in use	33%	100%	50%	0%	0%	0%	0%	0%	0%	100%	0%	0%



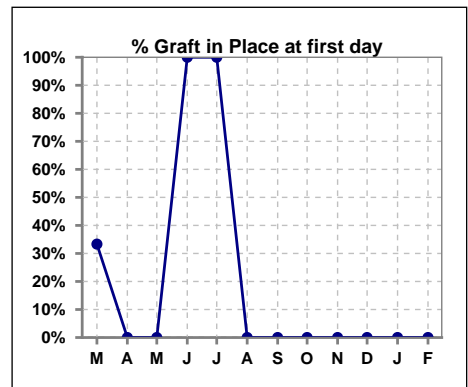
	Mar	Apr	May	Jun	Jul	Aug	Sep	Oct	Nov	Dec	Jan	Feb
# Patient	3	2	4	1	1	0	3	1	0	5	0	1
# Fistula in Place	1	2	4	0	0	0	2	1	0	5	0	1
% Fistula in Place	33%	100%	100%	0%	0%	0%	67%	100%	0%	100%	0%	100%



	Mar	Apr	May	Jun	Jul	Aug	Sep	Oct	Nov	Dec	Jan	Feb
# Patient	3	2	4	1	1	0	3	1	0	5	0	1
# Graft in use	0	0	0	0	1	0	0	0	0	0	0	0
% Graft in use	0%	0%	0%	0%	100%	0%	0%	0%	0%	0%	0%	0%



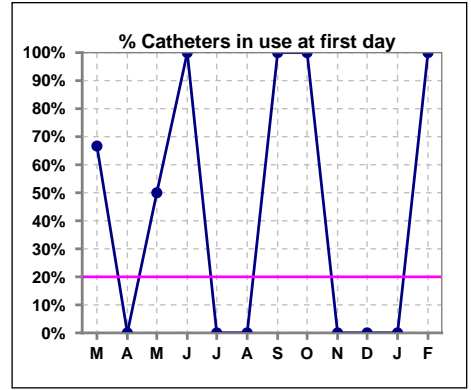
	Mar	Apr	May	Jun	Jul	Aug	Sep	Oct	Nov	Dec	Jan	Feb
# Patient	3	2	4	1	1	0	3	1	0	5	0	1
# Graft in Place	1	0	0	1	1	0	0	0	0	0	0	0
% Graft in Place	33%	0%	0%	100%	100%	0%	0%	0%	0%	0%	0%	0%



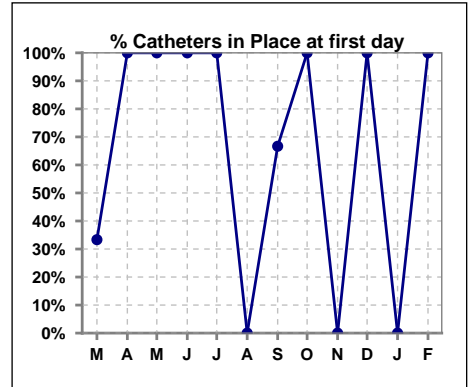
Methodology: a) All labs for 'Adequacy of Dialysis', 'Nutrition', 'Osteodystrophy', 'Anemia' and 'Diabetes' based on last value of month; b) BP's and #L processed are average of all values for month; c) Access data takes last access of month; d) Values for SGA and 'Infection Control' use most recent result.

IV. ACCESS - CONT. Access at first day for those patients that reached 90 days within the month.

	Mar	Apr	May	Jun	Jul	Aug	Sep	Oct	Nov	Dec	Jan	Feb
# Patient	3	2	4	1	1	0	3	1	0	5	0	1
# Catheters in use	2	0	2	1	0	0	3	1	0	0	0	1
% Catheters in use	67%	0%	50%	100%	0%	0%	100%	100%	0%	0%	0%	100%



	Mar	Apr	May	Jun	Jul	Aug	Sep	Oct	Nov	Dec	Jan	Feb
# Patient	3	2	4	1	1	0	3	1	0	5	0	1
# Catheters in Place	1	2	4	1	1	0	2	1	0	5	0	1
% Catheters in Place	33%	100%	100%	100%	100%	0%	67%	100%	0%	100%	0%	100%

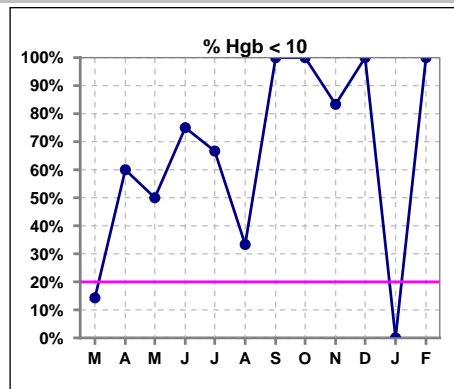


Methodology: a) All labs for 'Adequacy of Dialysis', 'Nutrition', 'Osteodystrophy', 'Anemia' and 'Diabetes' based on last value of month; b) BP's and #L processed are average of all values for month; c) Access data takes last access of month; d) Values for SGA and 'Infection Control' use most recent result.

V. ANEMIA

	Mar	Apr	May	Jun	Jul	Aug	Sep	Oct	Nov	Dec	Jan	Feb
# Hgb	7	5	2	4	3	3	2	3	6	2	2	1
# Hgb <= 10	1	3	1	3	2	1	2	3	5	2	0	1
Pop. Mean	11.0	10.9	10.2	9.3	10.0	10.5	8.3	9.0	9.1	9.6	10.9	7.2
Std. Deviation	1.0	1.5	0.2	0.9	1.7	1.9	0.2	0.5	1.0	0.2	0.3	0
% Hgb <= 10	14%	60%	50%	75%	67%	33%	100%	100%	83%	100%	0%	100%

Note: Excludes patients who received no ESA in month.



	Mar	Apr	May	Jun	Jul	Aug	Sep	Oct	Nov	Dec	Jan	Feb
# Hgb	7	5	2	4	3	3	2	3	6	2	2	1
# Hgb >= 12	2	1	0	0	0	0	0	0	0	0	0	0
Pop. Mean	11.0	10.9	10.2	9.3	10.0	10.5	8.3	9.0	9.1	9.6	10.9	7.2
Std. Deviation	1.0	1.5	0.2	0.9	1.7	1.9	0.2	0.5	1.0	0.2	0.3	0
% Hgb >= 12	29%	20%	0%	0%	0%	0%	0%	0%	0%	0%	0%	0%

Note: Excludes patients who received no ESA in month.

