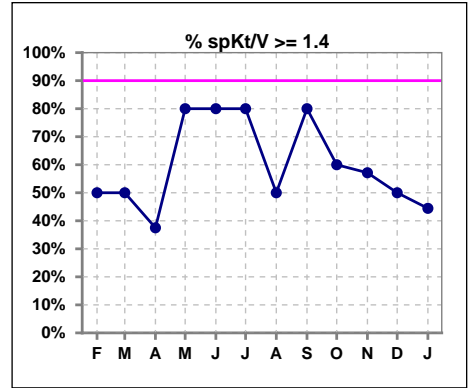
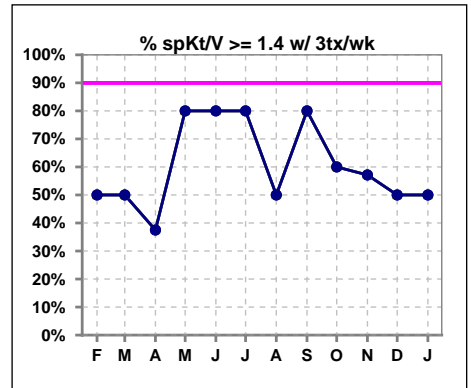


**I. ADEQUACY OF DIALYSIS**

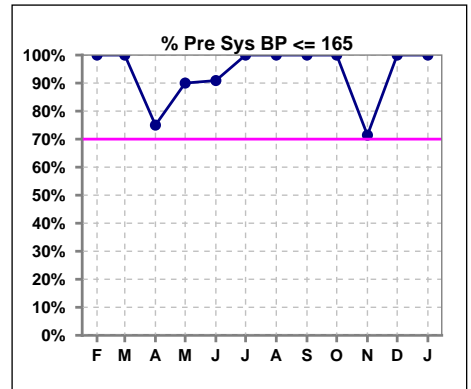
	Feb	Mar	Apr	May	Jun	Jul	Aug	Sep	Oct	Nov	Dec	Jan
# spKt/V	4	4	8	10	10	5	6	5	5	7	8	9
# spKt/V >= 1.4	2	2	3	8	8	4	3	4	3	4	4	4
Pop. Mean	1.79	1.61	1.52	1.58	1.59	1.62	1.35	1.56	1.59	1.46	1.55	1.45
Std. Deviation	0.61	0.45	0.52	0.22	0.22	0.23	0.27	0.22	0.38	0.41	0.35	0.47
% spKt/V >= 1.4	50%	50%	38%	80%	80%	80%	50%	80%	60%	57%	50%	44%
% spKt/V >= 1.2	100%	100%	100%	100%	100%	100%	83%	100%	100%	86%	88%	89%



	Feb	Mar	Apr	May	Jun	Jul	Aug	Sep	Oct	Nov	Dec	Jan
# spKt/V w/ 3tx/wk	4	4	8	10	10	5	6	5	5	7	8	8
# spKt/V >= 1.4 w/3tx/wk	2	2	3	8	8	4	3	4	3	4	4	4
Pop. Mean	1.79	1.61	1.52	1.58	1.59	1.62	1.35	1.56	1.59	1.46	1.55	1.47
Std. Deviation	0.61	0.45	0.52	0.22	0.22	0.23	0.27	0.22	0.38	0.41	0.35	0.49
% spKt/V >= 1.4 w/3tx/wk	50%	50%	38%	80%	80%	80%	50%	80%	60%	57%	50%	50%



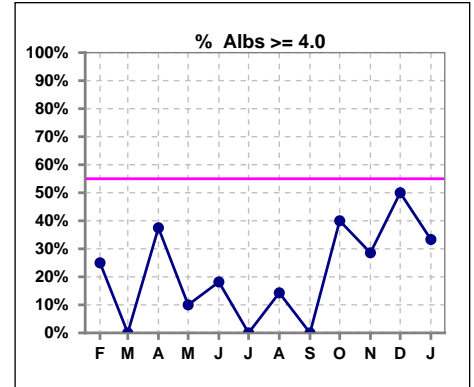
	Feb	Mar	Apr	May	Jun	Jul	Aug	Sep	Oct	Nov	Dec	Jan
# Pre Sys BP	4	4	8	10	11	6	7	5	5	7	8	9
# Pre Sys BP <= 165	4	4	7	9	10	6	7	5	5	6	8	9
Pop. Mean	135	142	155	147	143	139	141	140	140	142	132	140
Std. Deviation	17.5	15.6	10.3	16.6	16.1	15.2	14.3	20.0	11.3	19.3	14.6	14.3
% Pre Sys BP <= 165	100%	100%	75%	90%	91%	100%	100%	100%	100%	71%	100%	100%



\*Albumin values use BCG method - as of July 2001

**II. NUTRITION**

	Feb	Mar	Apr	May	Jun	Jul	Aug	Sep	Oct	Nov	Dec	Jan
# Albumin	4	4	8	10	11	6	7	5	5	7	8	9
# Albumin >= 4.0	1	0	3	1	2	0	1	0	2	2	4	3
Pop. Mean	3.1	3.3	3.5	3.5	3.6	3.3	3.4	3.5	3.6	3.6	3.7	3.8
Std. Deviation	0.94	0.68	0.66	0.40	0.61	0.22	0.57	0.53	0.54	0.43	0.66	0.52
% Alb >= 4.0	25%	0%	38%	10%	18%	0%	14%	0%	40%	29%	50%	33%

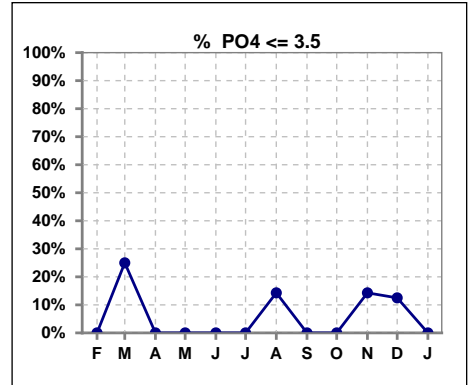


Methodology: a) All labs for 'Adequacy of Dialysis', 'Nutrition', 'Osteodystrophy', 'Anemia' and 'Diabetes' based on last value of month; b) BP's and #L processed are average of all values for month; c) Access data takes last access of month; d) Values for SGA and 'Infection Control' use most recent result.

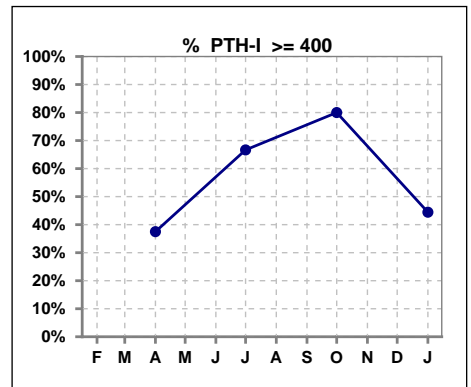
Lab methodology for PTH changed January 2012

**III. OSTEODYSTROPHY**

	Feb	Mar	Apr	May	Jun	Jul	Aug	Sep	Oct	Nov	Dec	Jan
# PO4	4	4	8	10	11	6	7	5	5	7	8	9
# PO4 <= 3.5	0	1	0	0	0	0	1	0	0	1	1	0
Pop. Mean	5.9	6.0	7.8	5.5	6.0	7.4	6.3	5.5	6.3	5.7	5.8	6.5
Std. Deviation	2.01	2.57	2.48	0.94	1.34	4.52	2.06	2.27	1.43	1.79	2.20	2.49
% PO4 <= 3.5	0%	25%	0%	0%	0%	0%	14%	0%	0%	14%	13%	0%



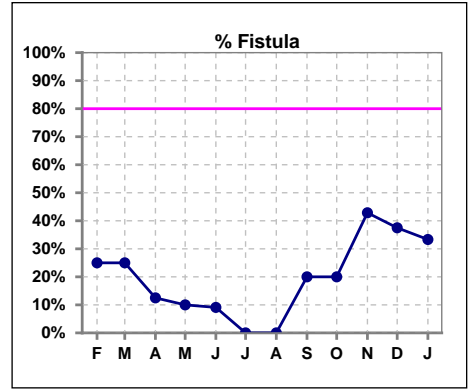
	Feb	Mar	Apr	May	Jun	Jul	Aug	Sep	Oct	Nov	Dec	Jan
# PTH-I			8			6			5			9
# PTH-I >= 400			3			4			4			4
Pop. Mean			395			486			513			546
Std. Deviation			318			201			187			489
% PTH-I >= 400			38%			67%			80%			44%



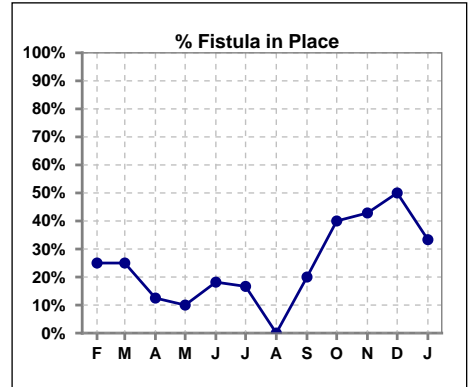
Methodology: a) All labs for 'Adequacy of Dialysis', 'Nutrition', 'Osteodystrophy', 'Anemia' and 'Diabetes' based on last value of month; b) BP's and #L processed are average of all values for month; c) Access data takes last access of month; d) Values for SGA and 'Infection Control' use most recent result.

**IV. ACCESS**

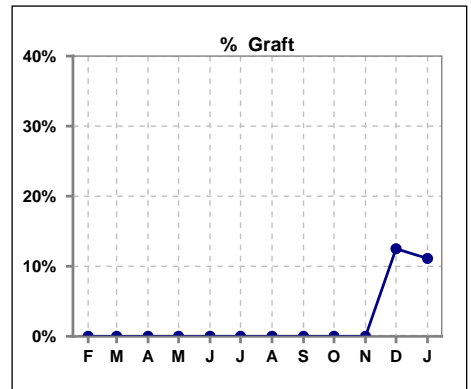
	Feb	Mar	Apr	May	Jun	Jul	Aug	Sep	Oct	Nov	Dec	Jan
# Access	4	4	8	10	11	6	7	5	5	7	8	9
# Fistula	1	1	1	1	1	0	0	1	1	3	3	3
% Fistula	25%	25%	13%	10%	9%	0%	0%	20%	20%	43%	38%	33%



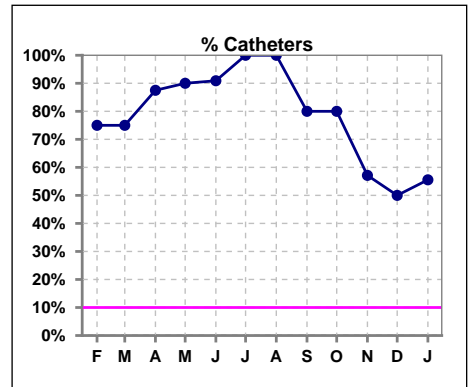
	Feb	Mar	Apr	May	Jun	Jul	Aug	Sep	Oct	Nov	Dec	Jan
# Patient	4	4	8	10	11	6	7	5	5	7	8	9
# Fistula in Place	1	1	1	1	2	1	0	1	2	3	4	3
% Fistula in Place	25%	25%	13%	10%	18%	17%	0%	20%	40%	43%	50%	33%



	Feb	Mar	Apr	May	Jun	Jul	Aug	Sep	Oct	Nov	Dec	Jan
# Access	4	4	8	10	11	6	7	5	5	7	8	9
# Graft	0	0	0	0	0	0	0	0	0	0	1	1
% Graft	0%	0%	0%	0%	0%	0%	0%	0%	0%	0%	13%	11%



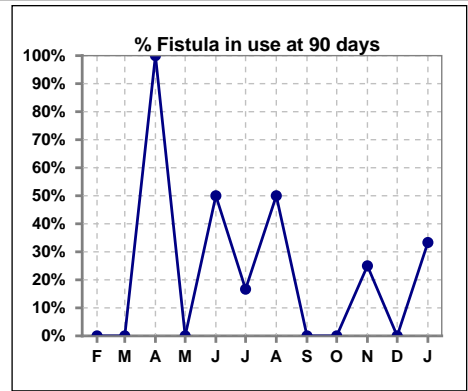
	Feb	Mar	Apr	May	Jun	Jul	Aug	Sep	Oct	Nov	Dec	Jan
# Access	4	4	8	10	11	6	7	5	5	7	8	9
# Catheters	3	3	7	9	10	6	7	4	4	4	4	5
% Catheters	75%	75%	88%	90%	91%	100%	100%	80%	80%	57%	50%	56%



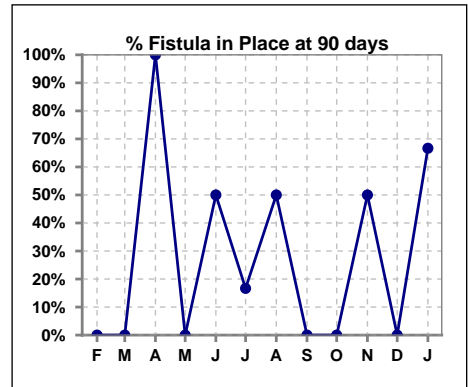
Methodology: a) All labs for 'Adequacy of Dialysis', 'Nutrition', 'Osteodystrophy', 'Anemia' and 'Diabetes' based on last value of month; b) BP's and #L processed are average of all values for month; c) Access data takes last access of month; d) Values for SGA and 'Infection Control' use most recent result.

**IV. ACCESS - CONT. Access at 90 days for those patients that reached 90 days within the month.**

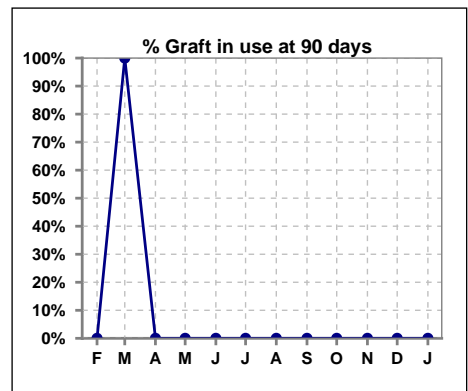
	Feb	Mar	Apr	May	Jun	Jul	Aug	Sep	Oct	Nov	Dec	Jan
# Patient	1	1	1	2	2	6	4	0	2	4	0	3
# Fistula in use	0	0	1	0	1	1	2	0	0	1	0	1
<b>% Fistula in use</b>	0%	0%	100%	0%	50%	17%	50%	0%	0%	25%	0%	33%



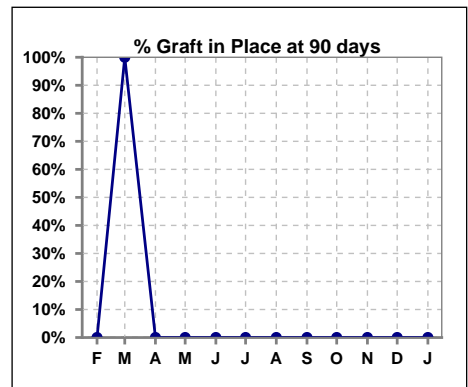
	Feb	Mar	Apr	May	Jun	Jul	Aug	Sep	Oct	Nov	Dec	Jan
# Patient	1	1	1	2	2	6	4	0	2	4	0	3
# Fistula in Place	0	0	1	0	1	1	2	0	0	2	0	2
<b>% Fistula in Place</b>	0%	0%	100%	0%	50%	17%	50%	0%	0%	50%	0%	67%



	Feb	Mar	Apr	May	Jun	Jul	Aug	Sep	Oct	Nov	Dec	Jan
# Patient	1	1	1	2	2	6	4	0	2	4	0	3
# Graft in use	0	1	0	0	0	0	0	0	0	0	0	0
<b>% Graft in use</b>	0%	100%	0%	0%	0%	0%	0%	0%	0%	0%	0%	0%



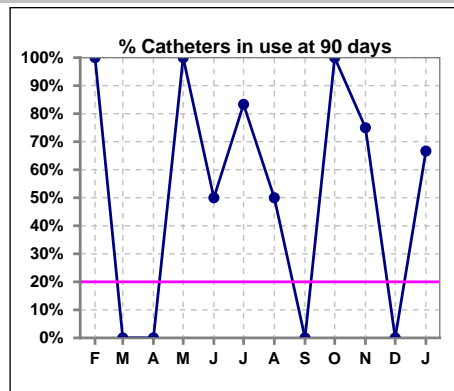
	Feb	Mar	Apr	May	Jun	Jul	Aug	Sep	Oct	Nov	Dec	Jan
# Patient	1	1	1	2	2	6	4	0	2	4	0	3
# Graft in Place	0	1	0	0	0	0	0	0	0	0	0	0
<b>% Graft in Place</b>	0%	100%	0%	0%	0%	0%	0%	0%	0%	0%	0%	0%



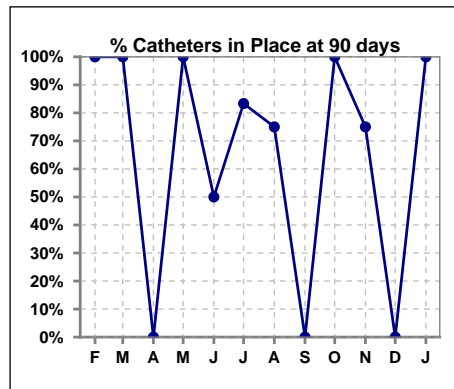
Methodology: a) All labs for 'Adequacy of Dialysis', 'Nutrition', 'Osteodystrophy', 'Anemia' and 'Diabetes' based on last value of month; b) BP's and #L processed are average of all values for month; c) Access data takes last access of month; d) Values for SGA and 'Infection Control' use most recent result.

**IV. ACCESS - CONT. Access at 90 days for those patients that reached 90 days within the month.**

	Feb	Mar	Apr	May	Jun	Jul	Aug	Sep	Oct	Nov	Dec	Jan
# Patient	1	1	1	2	2	6	4	0	2	4	0	3
# Catheters in use	1	0	0	2	1	5	2	0	2	3	0	2
<b>% Catheters in use</b>	<b>100%</b>	<b>0%</b>	<b>0%</b>	<b>100%</b>	<b>50%</b>	<b>83%</b>	<b>50%</b>	<b>0%</b>	<b>100%</b>	<b>75%</b>	<b>0%</b>	<b>67%</b>



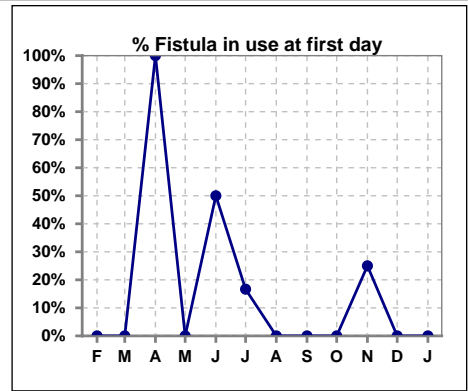
	Feb	Mar	Apr	May	Jun	Jul	Aug	Sep	Oct	Nov	Dec	Jan
# Patient	1	1	1	2	2	6	4	0	2	4	0	3
# Catheters in Place	1	1	0	2	1	5	3	0	2	3	0	3
<b>% Catheters in Place</b>	<b>100%</b>	<b>100%</b>	<b>0%</b>	<b>100%</b>	<b>50%</b>	<b>83%</b>	<b>75%</b>	<b>0%</b>	<b>100%</b>	<b>75%</b>	<b>0%</b>	<b>100%</b>



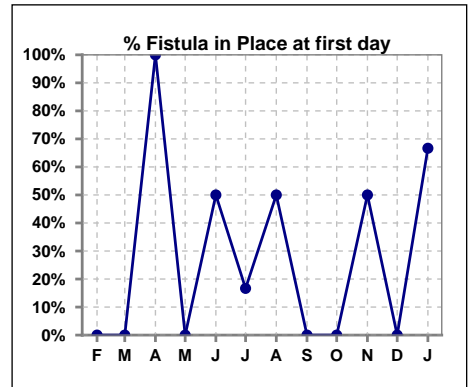
Methodology: a) All labs for 'Adequacy of Dialysis', 'Nutrition', 'Osteodystrophy', 'Anemia' and 'Diabetes' based on last value of month; b) BP's and #L processed are average of all values for month; c) Access data takes last access of month; d) Values for SGA and 'Infection Control' use most recent result.

**IV. ACCESS - CONT. Access at first day for those patients that reached 90 days within the month.**

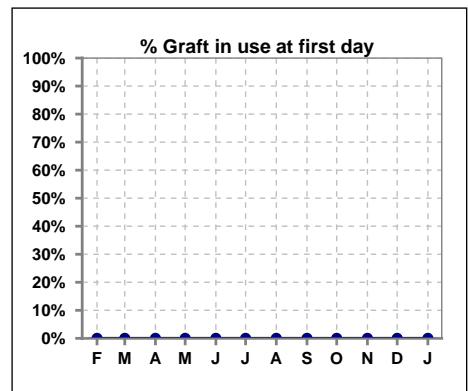
	Feb	Mar	Apr	May	Jun	Jul	Aug	Sep	Oct	Nov	Dec	Jan
# Patient	1	1	1	2	2	6	4	0	2	4	0	3
# Fistula in use	0	0	1	0	1	1	0	0	0	1	0	0
% Fistula in use	0%	0%	100%	0%	50%	17%	0%	0%	0%	25%	0%	0%



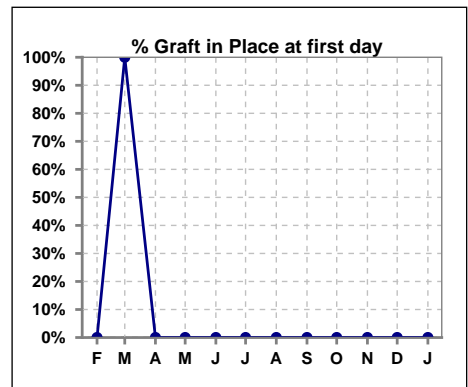
	Feb	Mar	Apr	May	Jun	Jul	Aug	Sep	Oct	Nov	Dec	Jan
# Patient	1	1	1	2	2	6	4	0	2	4	0	3
# Fistula in Place	0	0	1	0	1	1	2	0	0	2	0	2
% Fistula in Place	0%	0%	100%	0%	50%	17%	50%	0%	0%	50%	0%	67%



	Feb	Mar	Apr	May	Jun	Jul	Aug	Sep	Oct	Nov	Dec	Jan
# Patient	1	1	1	2	2	6	4	0	2	4	0	3
# Graft in use	0	0	0	0	0	0	0	0	0	0	0	0
% Graft in use	0%	0%	0%	0%	0%	0%	0%	0%	0%	0%	0%	0%



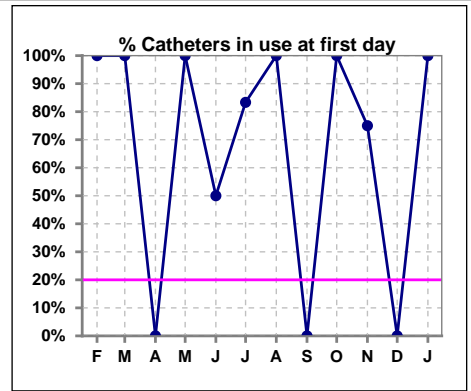
	Feb	Mar	Apr	May	Jun	Jul	Aug	Sep	Oct	Nov	Dec	Jan
# Patient	1	1	1	2	2	6	4	0	2	4	0	3
# Graft in Place	0	1	0	0	0	0	0	0	0	0	0	0
% Graft in Place	0%	100%	0%	0%	0%	0%	0%	0%	0%	0%	0%	0%



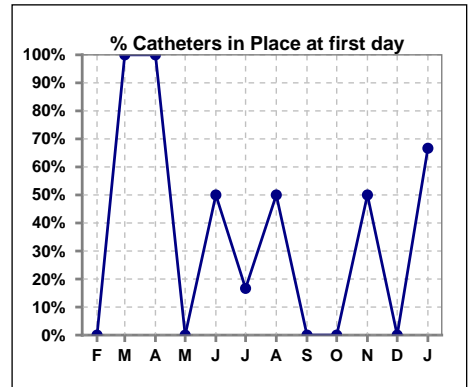
Methodology: a) All labs for 'Adequacy of Dialysis', 'Nutrition', 'Osteodystrophy', 'Anemia' and 'Diabetes' based on last value of month; b) BP's and #L processed are average of all values for month; c) Access data takes last access of month; d) Values for SGA and 'Infection Control' use most recent result.

**IV. ACCESS - CONT. Access at first day for those patients that reached 90 days within the month.**

	Feb	Mar	Apr	May	Jun	Jul	Aug	Sep	Oct	Nov	Dec	Jan
# Patient	1	1	1	2	2	6	4	0	2	4	0	3
# Catheters in use	1	1	0	2	1	5	4	0	2	3	0	3
% Catheters in use	100%	100%	0%	100%	50%	83%	100%	0%	100%	75%	0%	100%



	Feb	Mar	Apr	May	Jun	Jul	Aug	Sep	Oct	Nov	Dec	Jan
# Patient	1	1	1	2	2	6	4	0	2	4	0	3
# Catheters in Place	0	1	1	0	1	1	2	0	0	2	0	2
% Catheters in Place	0%	100%	100%	0%	50%	17%	50%	0%	0%	50%	0%	67%

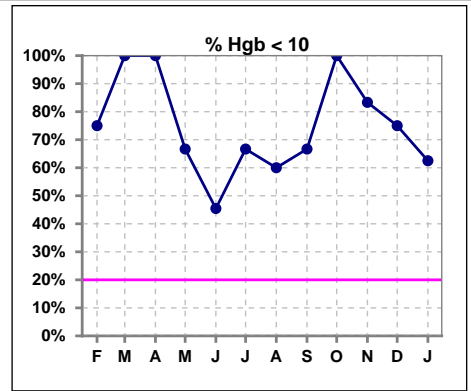




**V. ANEMIA**

	Feb	Mar	Apr	May	Jun	Jul	Aug	Sep	Oct	Nov	Dec	Jan
# Hgb	4	4	7	9	11	6	5	3	3	6	8	8
# Hgb <= 10	3	4	7	6	5	4	3	2	3	5	6	5
Pop. Mean	9.4	8.7	8.5	9.5	9.8	8.8	9.9	8.8	8.5	8.6	9.5	9.5
Std. Deviation	2.0	1.0	0.9	1.6	1.7	1.9	2.0	1.5	0.7	1.8	1.8	1.4
% Hgb <= 10	75%	100%	100%	67%	45%	67%	60%	67%	100%	83%	75%	63%

Note: Excludes patients who received no ESA in month.



	Feb	Mar	Apr	May	Jun	Jul	Aug	Sep	Oct	Nov	Dec	Jan
# Hgb	4	4	7	9	11	6	5	3	3	6	8	8
# Hgb >= 12	1	0	0	1	0	0	1	0	0	0	1	1
Pop. Mean	9.4	8.7	8.5	9.5	9.8	8.8	9.9	8.8	8.5	8.6	9.5	9.5
Std. Deviation	2.0	1.0	0.9	1.6	1.7	1.9	2.0	1.5	0.7	1.8	1.8	1.4
% Hgb >= 12	25%	0%	0%	11%	0%	0%	20%	0%	0%	0%	13%	13%

Note: Excludes patients who received no ESA in month.

