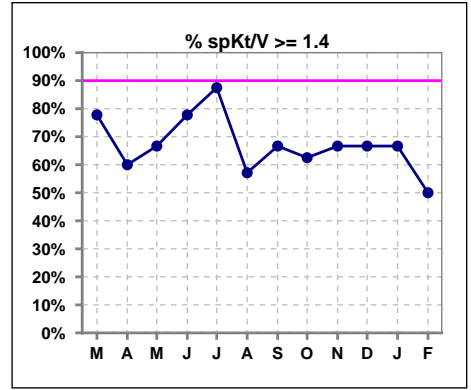
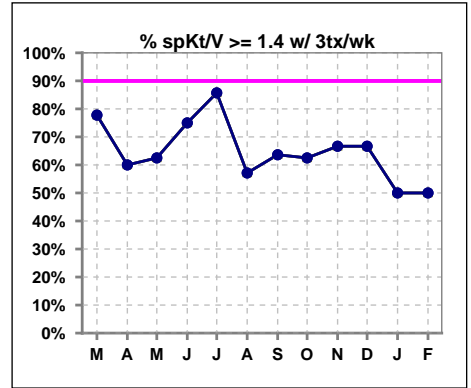


I. ADEQUACY OF DIALYSIS

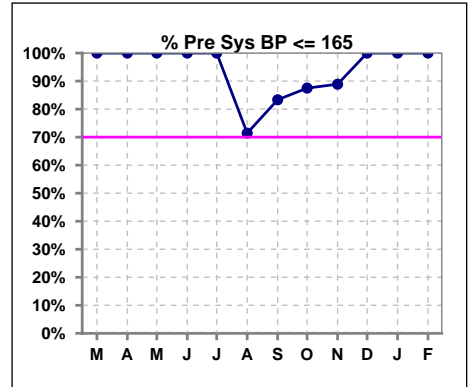
	Mar	Apr	May	Jun	Jul	Aug	Sep	Oct	Nov	Dec	Jan	Feb
# spKt/V	9	5	9	9	8	7	12	16	9	3	3	4
# spKt/V >= 1.4	7	3	6	7	7	4	8	10	6	2	2	2
Pop. Mean	1.70	1.61	1.75	1.81	1.84	1.39	1.56	1.54	1.58	1.52	1.32	1.79
Std. Deviation	0.35	0.28	0.66	0.41	0.48	0.14	0.23	0.25	0.42	0.11	0.21	0.61
% spKt/V >= 1.4	78%	60%	67%	78%	88%	57%	67%	63%	67%	67%	67%	50%
% spKt/V >= 1.2	100%	100%	89%	100%	100%	100%	100%	100%	100%	100%	67%	100%



	Mar	Apr	May	Jun	Jul	Aug	Sep	Oct	Nov	Dec	Jan	Feb
# spKt/V w/ 3tx/wk	9	5	8	8	7	7	11	16	9	3	2	4
# spKt/V >= 1.4 w/3tx/wk	7	3	5	6	6	4	7	10	6	2	1	2
Pop. Mean	1.70	1.61	1.79	1.86	1.87	1.39	1.56	1.54	1.58	1.52	1.28	1.79
Std. Deviation	0.35	0.28	0.70	0.42	0.51	0.14	0.24	0.25	0.42	0.11	0.28	0.61
% spKt/V >= 1.4 w/3tx/wk	78%	60%	63%	75%	86%	57%	64%	63%	67%	67%	50%	50%



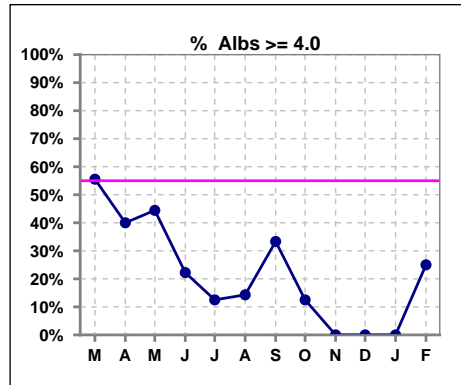
	Mar	Apr	May	Jun	Jul	Aug	Sep	Oct	Nov	Dec	Jan	Feb
# Pre Sys BP	9	5	9	9	8	7	12	16	9	3	3	4
# Pre Sys BP <= 165	9	5	9	9	8	5	10	14	9	3	3	4
Pop. Mean	141	144	138	135	134	148	141	146	145	145	143	135
Std. Deviation	9.3	12.6	12.4	13.2	12.8	16.5	20.3	18.1	20.2	11.8	5.9	17.5
% Pre Sys BP <= 165	100%	100%	100%	100%	100%	71%	83%	88%	89%	100%	100%	100%



*Albumin values use BCG method - as of July 2001

II. NUTRITION

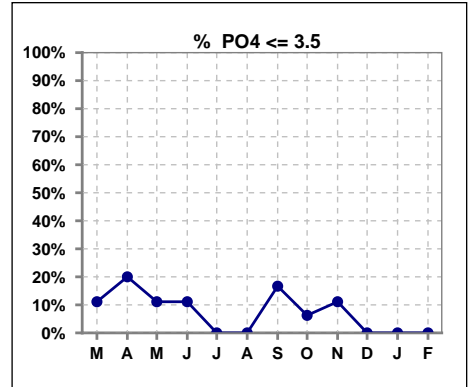
	Mar	Apr	May	Jun	Jul	Aug	Sep	Oct	Nov	Dec	Jan	Feb
# Albumin	9	5	9	9	8	7	12	16	9	3	3	4
# Albumin >= 4.0	5	2	4	2	1	1	4	2	0	0	0	1
Pop. Mean	4.0	3.9	3.7	3.4	3.6	3.6	3.5	3.4	3.3	3.4	3.5	3.1
Std. Deviation	0.36	0.39	0.66	0.47	0.44	0.44	0.59	0.49	0.47	0.35	0.40	0.94
% Alb >= 4.0	56%	40%	44%	22%	13%	14%	33%	13%	0%	0%	0%	25%



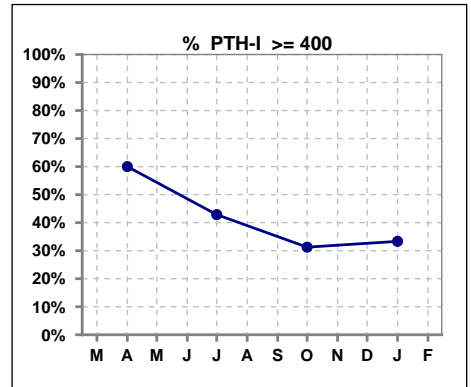
Lab methodology for PTH changed January 2012

III. OSTEODYSTROPHY

	Mar	Apr	May	Jun	Jul	Aug	Sep	Oct	Nov	Dec	Jan	Feb
# PO4	9	5	9	9	8	7	12	16	9	3	3	4
# PO4 <= 3.5	1	1	1	1	0	0	2	1	1	0	0	0
Pop. Mean	5.6	4.9	5.8	5.4	4.9	5.0	4.8	5.0	4.7	4.5	5.9	5.9
Std. Deviation	1.88	1.34	1.65	2.06	0.87	0.96	1.41	1.16	1.07	0.72	1.78	2.01
% PO4 <= 3.5	11%	20%	11%	11%	0%	0%	17%	6%	11%	0%	0%	0%



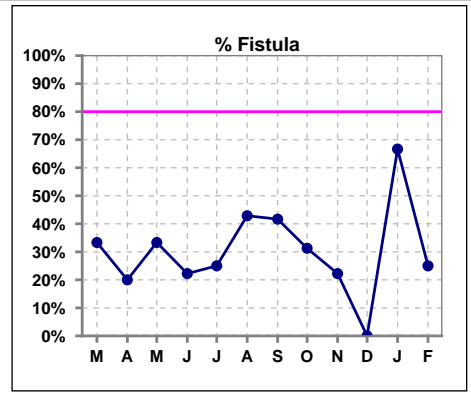
	Mar	Apr	May	Jun	Jul	Aug	Sep	Oct	Nov	Dec	Jan	Feb
# PTH-I		5			7			16			3	
# PTH-I >= 400		3			3			5			1	
Pop. Mean		573			386			432			331	
Std. Deviation		343			194			371			277	
% PTH-I >= 400		60%			43%			31%			33%	



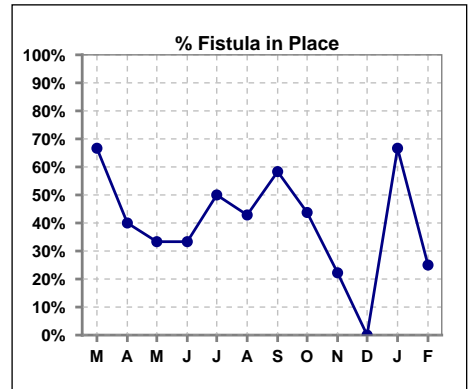
Methodology: a) All labs for 'Adequacy of Dialysis', 'Nutrition', 'Osteodystrophy', 'Anemia' and 'Diabetes' based on last value of month; b) BP's and #L processed are average of all values for month; c) Access data takes last access of month; d) Values for SGA and 'Infection Control' use most recent result.

IV. ACCESS

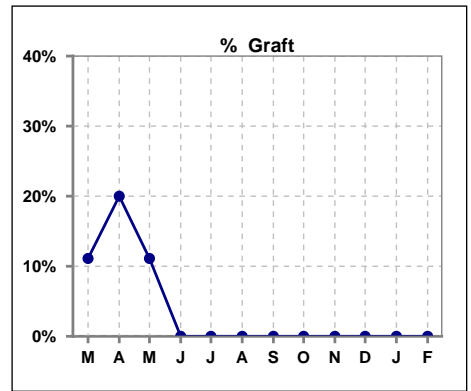
	Mar	Apr	May	Jun	Jul	Aug	Sep	Oct	Nov	Dec	Jan	Feb
# Access	9	5	9	9	8	7	12	16	9	3	3	4
# Fistula	3	1	3	2	2	3	5	5	2	0	2	1
% Fistula	33%	20%	33%	22%	25%	43%	42%	31%	22%	0%	67%	25%



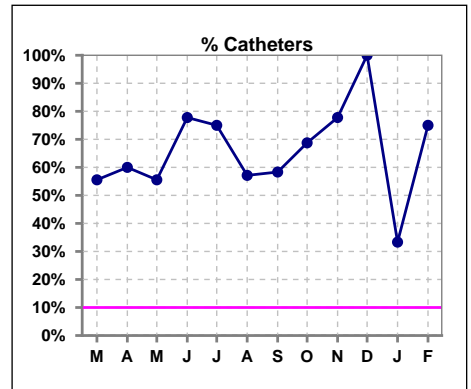
	Mar	Apr	May	Jun	Jul	Aug	Sep	Oct	Nov	Dec	Jan	Feb
# Patient	9	5	9	9	8	7	12	16	9	3	3	4
# Fistula in Place	6	2	3	3	4	3	7	7	2	0	2	1
% Fistula in Place	67%	40%	33%	33%	50%	43%	58%	44%	22%	0%	67%	25%



	Mar	Apr	May	Jun	Jul	Aug	Sep	Oct	Nov	Dec	Jan	Feb
# Access	9	5	9	9	8	7	12	16	9	3	3	4
# Graft	1	1	1	0	0	0	0	0	0	0	0	0
% Graft	11%	20%	11%	0%	0%	0%	0%	0%	0%	0%	0%	0%



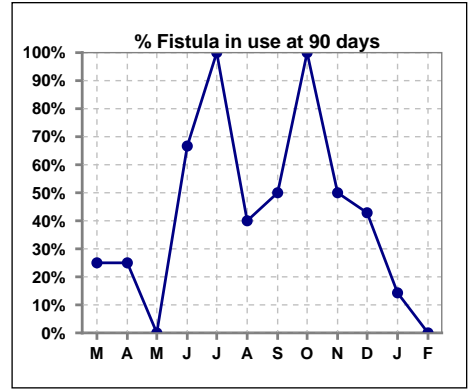
	Mar	Apr	May	Jun	Jul	Aug	Sep	Oct	Nov	Dec	Jan	Feb
# Access	9	5	9	9	8	7	12	16	9	3	3	4
# Catheters	5	3	5	7	6	4	7	11	7	3	1	3
% Catheters	56%	60%	56%	78%	75%	57%	58%	69%	78%	100%	33%	75%



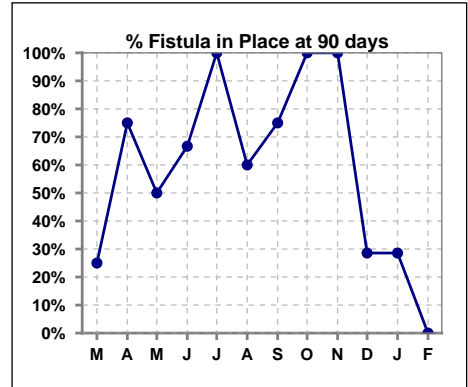
Methodology: a) All labs for 'Adequacy of Dialysis', 'Nutrition', 'Osteodystrophy', 'Anemia' and 'Diabetes' based on last value of month; b) BP's and #L processed are average of all values for month; c) Access data takes last access of month; d) Values for SGA and 'Infection Control' use most recent result.

IV. ACCESS - CONT. Access at 90 days for those patients that reached 90 days within the month.

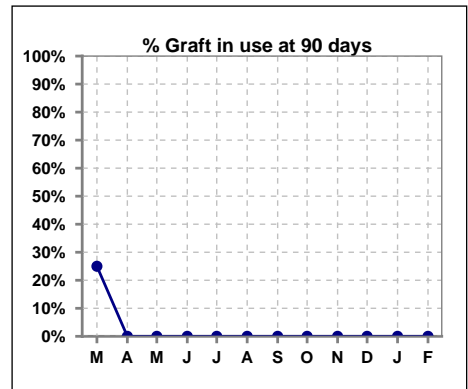
	Mar	Apr	May	Jun	Jul	Aug	Sep	Oct	Nov	Dec	Jan	Feb
# Patient	4	8	2	3	2	5	4	1	4	7	7	1
# Fistula in use	1	2	0	2	2	2	2	1	2	3	1	0
% Fistula in use	25%	25%	0%	67%	100%	40%	50%	100%	50%	43%	14%	0%



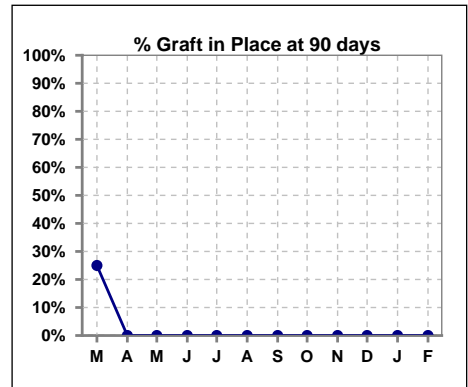
	Mar	Apr	May	Jun	Jul	Aug	Sep	Oct	Nov	Dec	Jan	Feb
# Patient	4	8	2	3	2	5	4	1	4	7	7	1
# Fistula in Place	1	6	1	2	2	3	3	1	4	2	2	0
% Fistula in Place	25%	75%	50%	67%	100%	60%	75%	100%	100%	29%	29%	0%



	Mar	Apr	May	Jun	Jul	Aug	Sep	Oct	Nov	Dec	Jan	Feb
# Patient	4	8	2	3	2	5	4	1	4	7	7	1
# Graft in use	1	0	0	0	0	0	0	0	0	0	0	0
% Graft in use	25%	0%	0%	0%	0%	0%	0%	0%	0%	0%	0%	0%



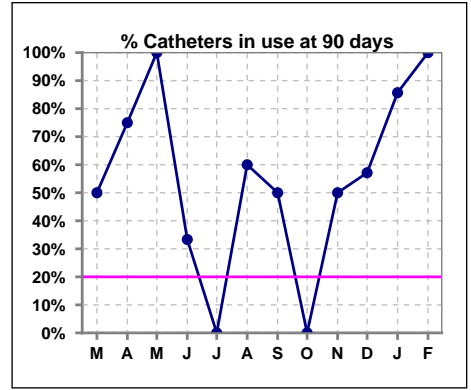
	Mar	Apr	May	Jun	Jul	Aug	Sep	Oct	Nov	Dec	Jan	Feb
# Patient	4	8	2	3	2	5	4	1	4	7	7	1
# Graft in Place	1	0	0	0	0	0	0	0	0	0	0	0
% Graft in Place	25%	0%	0%	0%	0%	0%	0%	0%	0%	0%	0%	0%



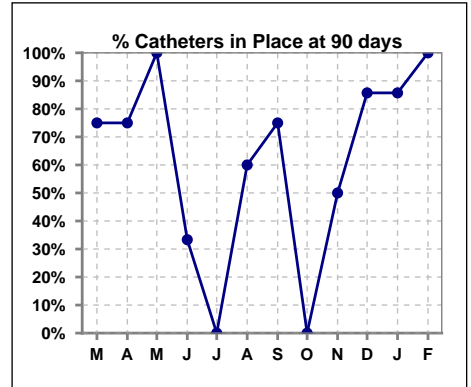
Methodology: a) All labs for 'Adequacy of Dialysis', 'Nutrition', 'Osteodystrophy', 'Anemia' and 'Diabetes' based on last value of month; b) BP's and #L processed are average of all values for month; c) Access data takes last access of month; d) Values for SGA and 'Infection Control' use most recent result.

IV. ACCESS - CONT. Access at 90 days for those patients that reached 90 days within the month.

	Mar	Apr	May	Jun	Jul	Aug	Sep	Oct	Nov	Dec	Jan	Feb
# Patient	4	8	2	3	2	5	4	1	4	7	7	1
# Catheters in use	2	6	2	1	0	3	2	0	2	4	6	1
% Catheters in use	50%	75%	100%	33%	0%	60%	50%	0%	50%	57%	86%	100%

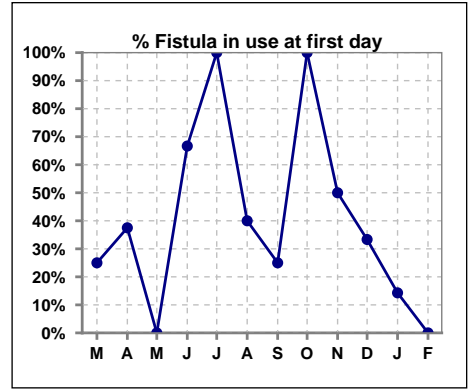


	Mar	Apr	May	Jun	Jul	Aug	Sep	Oct	Nov	Dec	Jan	Feb
# Patient	4	8	2	3	2	5	4	1	4	7	7	1
# Catheters in Place	3	6	2	1	0	3	3	0	2	6	6	1
% Catheters in Place	75%	75%	100%	33%	0%	60%	75%	0%	50%	86%	86%	100%

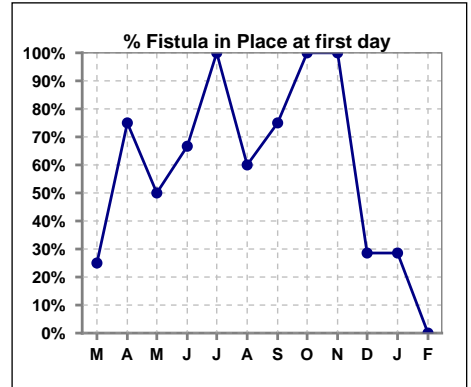


IV. ACCESS - CONT. Access at first day for those patients that reached 90 days within the month.

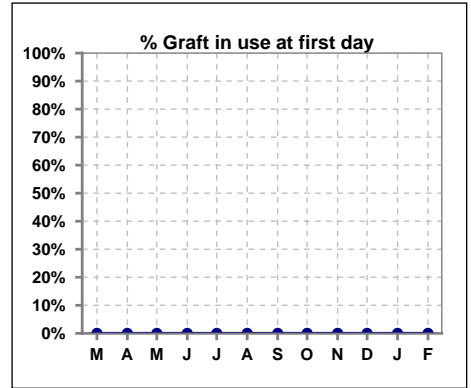
	Mar	Apr	May	Jun	Jul	Aug	Sep	Oct	Nov	Dec	Jan	Feb
# Patient	4	8	2	3	1	5	4	1	4	6	7	1
# Fistula in use	1	3	0	2	1	2	1	1	2	2	1	0
% Fistula in use	25%	38%	0%	67%	100%	40%	25%	100%	50%	33%	14%	0%



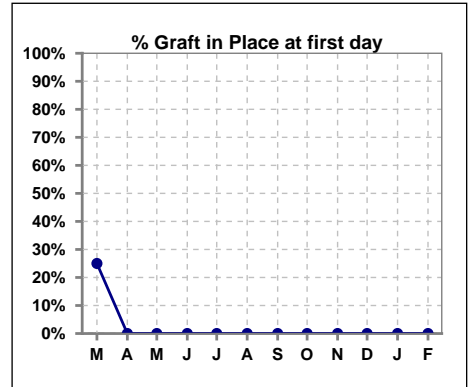
	Mar	Apr	May	Jun	Jul	Aug	Sep	Oct	Nov	Dec	Jan	Feb
# Patient	4	8	2	3	2	5	4	1	4	7	7	1
# Fistula in Place	1	6	1	2	2	3	3	1	4	2	2	0
% Fistula in Place	25%	75%	50%	67%	100%	60%	75%	100%	100%	29%	29%	0%



	Mar	Apr	May	Jun	Jul	Aug	Sep	Oct	Nov	Dec	Jan	Feb
# Patient	4	8	2	3	1	5	4	1	4	6	7	1
# Graft in use	0	0	0	0	0	0	0	0	0	0	0	0
% Graft in use	0%	0%	0%	0%	0%	0%	0%	0%	0%	0%	0%	0%



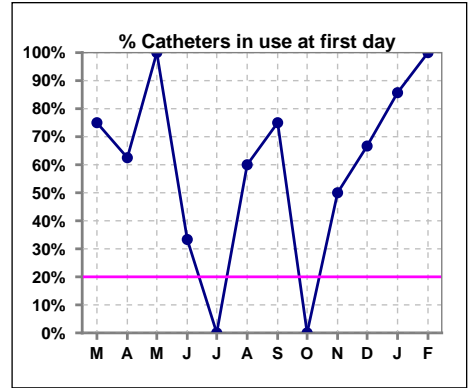
	Mar	Apr	May	Jun	Jul	Aug	Sep	Oct	Nov	Dec	Jan	Feb
# Patient	4	8	2	3	2	5	4	1	4	7	7	1
# Graft in Place	1	0	0	0	0	0	0	0	0	0	0	0
% Graft in Place	25%	0%	0%	0%	0%	0%	0%	0%	0%	0%	0%	0%



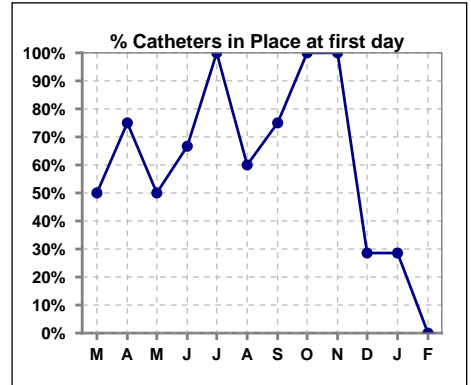
Methodology: a) All labs for 'Adequacy of Dialysis', 'Nutrition', 'Osteodystrophy', 'Anemia' and 'Diabetes' based on last value of month; b) BP's and #L processed are average of all values for month; c) Access data takes last access of month; d) Values for SGA and 'Infection Control' use most recent result.

IV. ACCESS - CONT. Access at first day for those patients that reached 90 days within the month.

	Mar	Apr	May	Jun	Jul	Aug	Sep	Oct	Nov	Dec	Jan	Feb
# Patient	4	8	2	3	1	5	4	1	4	6	7	1
# Catheters in use	3	5	2	1	0	3	3	0	2	4	6	1
% Catheters in use	75%	63%	100%	33%	0%	60%	75%	0%	50%	67%	86%	100%



	Mar	Apr	May	Jun	Jul	Aug	Sep	Oct	Nov	Dec	Jan	Feb
# Patient	4	8	2	3	2	5	4	1	4	7	7	1
# Catheters in Place	2	6	1	2	2	3	3	1	4	2	2	0
% Catheters in Place	50%	75%	50%	67%	100%	60%	75%	100%	100%	29%	29%	0%

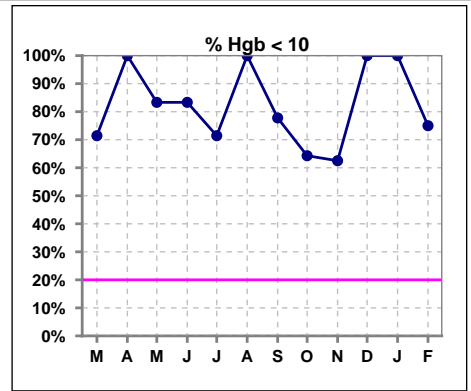


Methodology: a) All labs for 'Adequacy of Dialysis', 'Nutrition', 'Osteodystrophy', 'Anemia' and 'Diabetes' based on last value of month; b) BP's and #L processed are average of all values for month; c) Access data takes last access of month; d) Values for SGA and 'Infection Control' use most recent result.

V. ANEMIA

	Mar	Apr	May	Jun	Jul	Aug	Sep	Oct	Nov	Dec	Jan	Feb
# Hgb	7	4	6	6	7	5	9	14	8	3	3	4
# Hgb <= 10	5	4	5	5	5	5	7	9	5	3	3	3
Pop. Mean	10.0	9.2	8.6	8.8	9.9	8.4	8.7	9.4	9.6	9.5	8.9	9.4
Std. Deviation	1.2	0.6	1.0	1.7	0.9	1.2	1.3	1.9	2.0	0.5	1.6	2.0
% Hgb <= 10	71%	100%	83%	83%	71%	100%	78%	64%	63%	100%	100%	75%

Note: Excludes patients who received no ESA in month.



	Mar	Apr	May	Jun	Jul	Aug	Sep	Oct	Nov	Dec	Jan	Feb
# Hgb	7	4	6	6	7	5	9	14	8	3	3	4
# Hgb >= 12	1	0	0	0	0	0	0	2	1	0	0	1
Pop. Mean	10.0	9.2	8.6	8.8	9.9	8.4	8.7	9.4	9.6	9.5	8.9	9.4
Std. Deviation	1.2	0.6	1.0	1.7	0.9	1.2	1.3	1.9	2.0	0.5	1.6	2.0
% Hgb >= 12	14%	0%	0%	0%	0%	0%	0%	14%	13%	0%	0%	25%

Note: Excludes patients who received no ESA in month.

