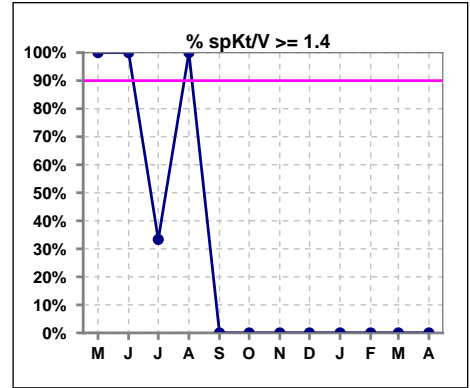
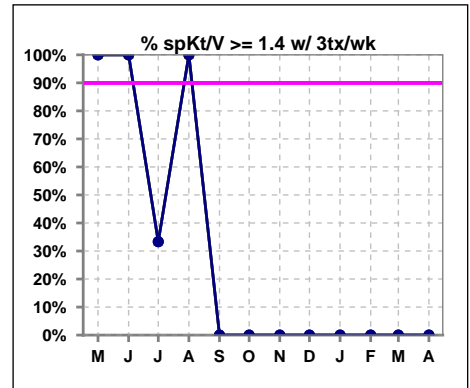


I. ADEQUACY OF DIALYSIS

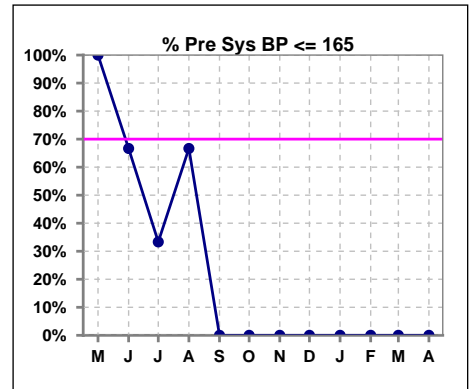
	May	Jun	Jul	Aug	Sep	Oct	Nov	Dec	Jan	Feb	Mar	Apr
# spKt/V	2	3	3	3	0	0	0	0	0	0	0	0
# spKt/V >= 1.4	2	3	1	3	0	0	0	0	0	0	0	0
Pop. Mean	1.45	1.77	1.44	1.85	0	0	0	0	0	0	0	0
Std. Deviation	0.07	0.51	0.20	0.45	0	0	0	0	0	0	0	0
% spKt/V >= 1.4	100%	100%	33%	100%	0%	0%	0%	0%	0%	0%	0%	0%
% spKt/V >= 1.2	100%	100%	100%	100%	0%	0%	0%	0%	0%	0%	0%	0%



	May	Jun	Jul	Aug	Sep	Oct	Nov	Dec	Jan	Feb	Mar	Apr
# spKt/V w/ 3tx/wk	2	3	3	3	0	0	0	0	0	0	0	0
# spKt/V >= 1.4 w/3tx/wk	2	3	1	3	0	0	0	0	0	0	0	0
Pop. Mean	1.45	1.77	1.44	1.85	0	0	0	0	0	0	0	0
Std. Deviation	0.07	0.51	0.20	0.45	0	0	0	0	0	0	0	0
% spKt/V >= 1.4 w/3tx/wk	100%	100%	33%	100%	0%	0%	0%	0%	0%	0%	0%	0%



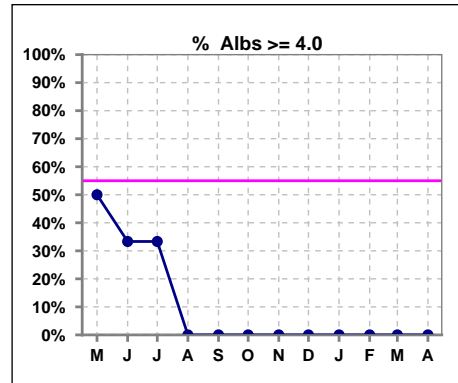
	May	Jun	Jul	Aug	Sep	Oct	Nov	Dec	Jan	Feb	Mar	Apr
# Pre Sys BP	2	3	3	3	0	0	0	0	0	0	0	0
# Pre Sys BP <= 165	2	2	1	2	0	0	0	0	0	0	0	0
Pop. Mean	138	163	167	159	0	0	0	0	0	0	0	0
Std. Deviation	5.7	34.1	3.1	32.5	0	0	0	0	0	0	0	0
%Pre Sys BP <=165	100%	67%	33%	67%	0%	0%	0%	0%	0%	0%	0%	0%



*Albumin values use BCG method - as of July 2001

II. NUTRITION

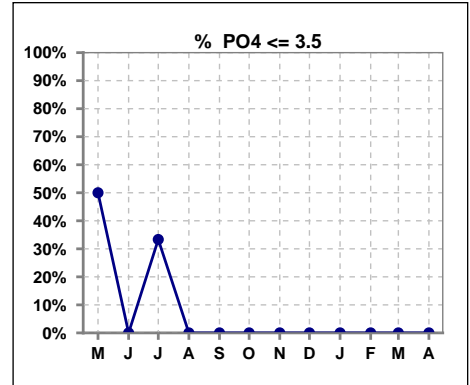
	May	Jun	Jul	Aug	Sep	Oct	Nov	Dec	Jan	Feb	Mar	Apr
# Albumin	2	3	3	3	0	0	0	0	0	0	0	0
# Albumin >= 4.0	1	1	1	0	0	0	0	0	0	0	0	0
Pop. Mean	4.0	3.8	3.5	3.3	0	0	0	0	0	0	0	0
Std. Deviation	0.21	0.25	0.67	0.75	0	0	0	0	0	0	0	0
% Alb >= 4.0	50%	33%	33%	0%	0%	0%	0%	0%	0%	0%	0%	0%



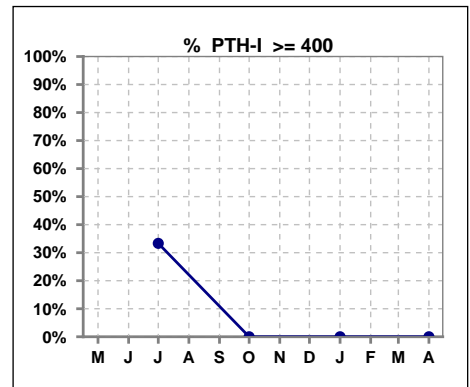
Lab methodology for PTH changed January 2012

III. OSTEODYSTROPHY

	May	Jun	Jul	Aug	Sep	Oct	Nov	Dec	Jan	Feb	Mar	Apr
# PO4	2	3	3	3	0	0	0	0	0	0	0	0
# PO4 <= 3.5	1	0	1	0	0	0	0	0	0	0	0	0
Pop. Mean	3.8	5.3	4.9	8.2	0	0	0	0	0	0	0	0
Std. Deviation	1.98	1.36	2.06	0.98	0	0	0	0	0	0	0	0
% PO4 <= 3.5	50%	0%	33%	0%	0%	0%	0%	0%	0%	0%	0%	0%

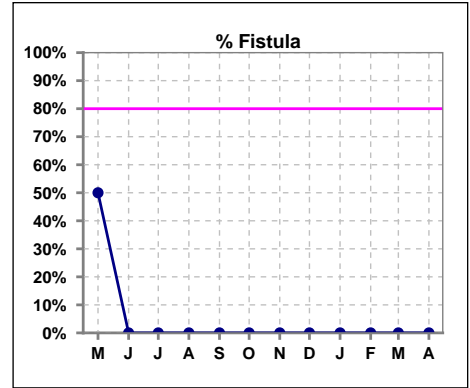


	May	Jun	Jul	Aug	Sep	Oct	Nov	Dec	Jan	Feb	Mar	Apr
# PTH-I			3			0			0			0
# PTH-I >= 400			1			0			0			0
Pop. Mean			288			0			0			0
Std. Deviation			184			0			0			0
% PTH-I >= 400			33%			0%			0%			0%

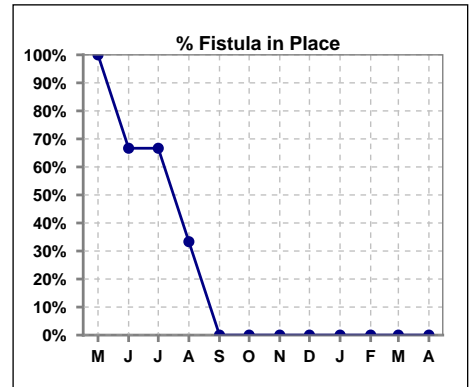


IV. ACCESS

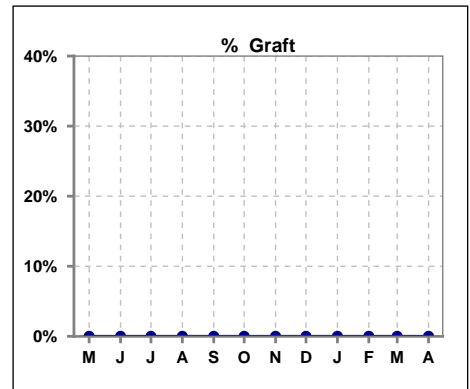
	May	Jun	Jul	Aug	Sep	Oct	Nov	Dec	Jan	Feb	Mar	Apr
# Access	2	3	3	3	0	0	0	0	0	0	0	0
# Fistula	1	0	0	0	0	0	0	0	0	0	0	0
% Fistula	50%	0%	0%	0%	0%	0%	0%	0%	0%	0%	0%	0%



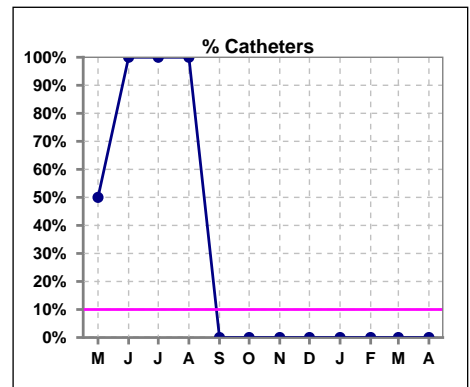
	May	Jun	Jul	Aug	Sep	Oct	Nov	Dec	Jan	Feb	Mar	Apr
# Patient	2	3	3	3	0	0	0	0	0	0	0	0
# Fistula in Place	2	2	2	1	0	0	0	0	0	0	0	0
% Fistula in Place	100%	67%	67%	33%	0%	0%	0%	0%	0%	0%	0%	0%



	May	Jun	Jul	Aug	Sep	Oct	Nov	Dec	Jan	Feb	Mar	Apr
# Access	2	3	3	3	0	0	0	0	0	0	0	0
# Graft	0	0	0	0	0	0	0	0	0	0	0	0
% Graft	0%	0%	0%	0%	0%	0%	0%	0%	0%	0%	0%	0%

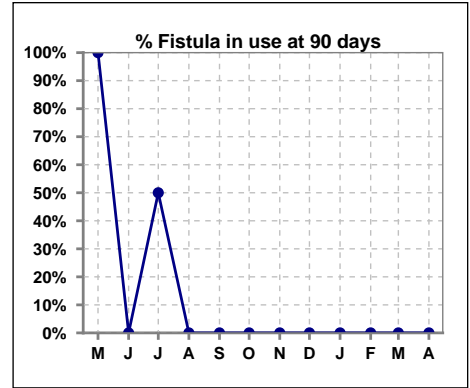


	May	Jun	Jul	Aug	Sep	Oct	Nov	Dec	Jan	Feb	Mar	Apr
# Access	2	3	3	3	0	0	0	0	0	0	0	0
# Catheters	1	3	3	3	0	0	0	0	0	0	0	0
% Catheters	50%	100%	100%	100%	0%	0%	0%	0%	0%	0%	0%	0%

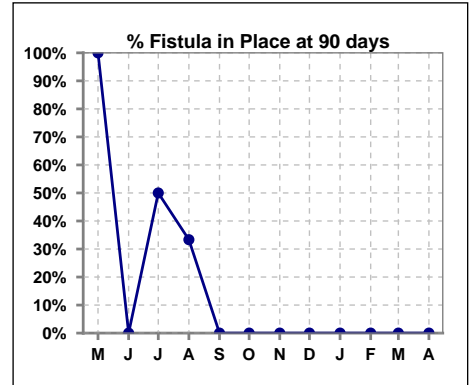


IV. ACCESS - CONT. Access at 90 days for those patients that reached 90 days within the month.

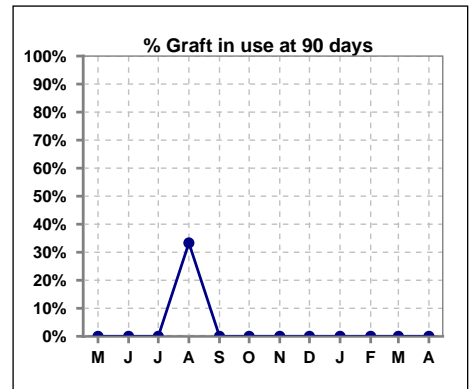
	May	Jun	Jul	Aug	Sep	Oct	Nov	Dec	Jan	Feb	Mar	Apr
# Patient	1	0	2	3	1	0	0	0	0	0	0	0
# Fistula in use	1	0	1	0	0	0	0	0	0	0	0	0
% Fistula in use	100%	0%	50%	0%	0%	0%	0%	0%	0%	0%	0%	0%



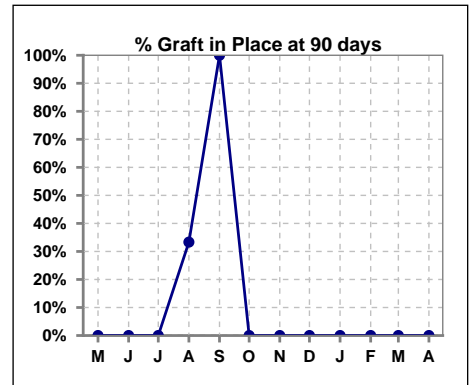
	May	Jun	Jul	Aug	Sep	Oct	Nov	Dec	Jan	Feb	Mar	Apr
# Patient	1	0	2	3	1	0	0	0	0	0	0	0
# Fistula in Place	1	0	1	1	0	0	0	0	0	0	0	0
% Fistula in Place	100%	0%	50%	33%	0%	0%	0%	0%	0%	0%	0%	0%



	May	Jun	Jul	Aug	Sep	Oct	Nov	Dec	Jan	Feb	Mar	Apr
# Patient	1	0	2	3	1	0	0	0	0	0	0	0
# Graft in use	0	0	0	1	0	0	0	0	0	0	0	0
% Graft in use	0%	0%	0%	33%	0%	0%	0%	0%	0%	0%	0%	0%

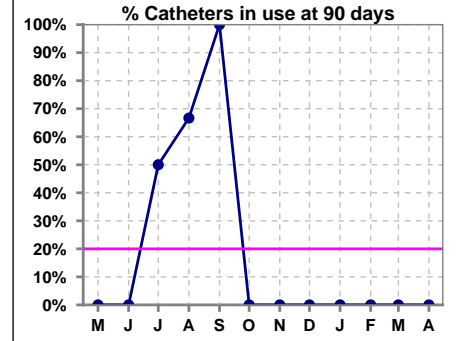


	May	Jun	Jul	Aug	Sep	Oct	Nov	Dec	Jan	Feb	Mar	Apr
# Patient	1	0	2	3	1	0	0	0	0	0	0	0
# Graft in Place	0	0	0	1	1	0	0	0	0	0	0	0
% Graft in Place	0%	0%	0%	33%	100%	0%	0%	0%	0%	0%	0%	0%

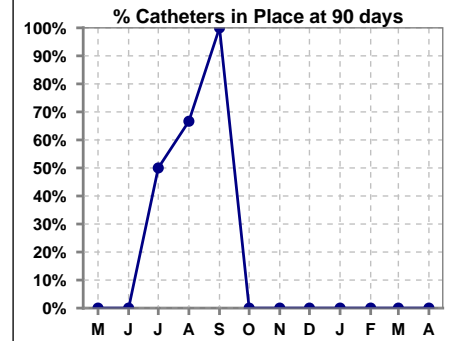


IV. ACCESS - CONT. Access at 90 days for those patients that reached 90 days within the month.

	May	Jun	Jul	Aug	Sep	Oct	Nov	Dec	Jan	Feb	Mar	Apr
# Patient	1	0	2	3	1	0	0	0	0	0	0	0
# Catheters in use	0	0	1	2	1	0	0	0	0	0	0	0
% Catheters in use	0%	0%	50%	67%	100%	0%	0%	0%	0%	0%	0%	0%

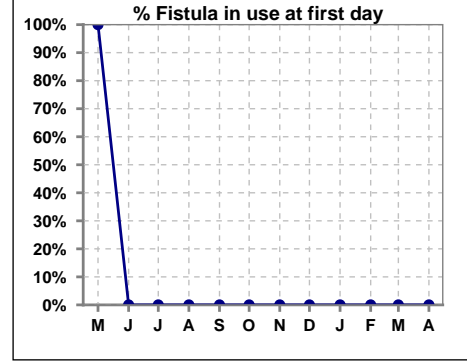


	May	Jun	Jul	Aug	Sep	Oct	Nov	Dec	Jan	Feb	Mar	Apr
# Patient	1	0	2	3	1	0	0	0	0	0	0	0
# Catheters in Place	0	0	1	2	1	0	0	0	0	0	0	0
% Catheters in Place	0%	0%	50%	67%	100%	0%	0%	0%	0%	0%	0%	0%

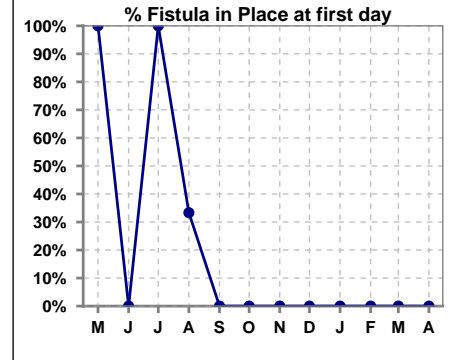


IV. ACCESS - CONT. Access at first day for those patients that reached 90 days within the month.

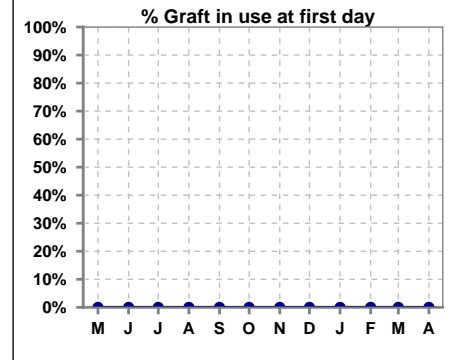
	May	Jun	Jul	Aug	Sep	Oct	Nov	Dec	Jan	Feb	Mar	Apr
# Patient	1	0	2	3	1	0	0	0	0	0	0	0
# Fistula in use	1	0	0	0	0	0	0	0	0	0	0	0
% Fistula in use	100%	0%	0%	0%	0%	0%	0%	0%	0%	0%	0%	0%



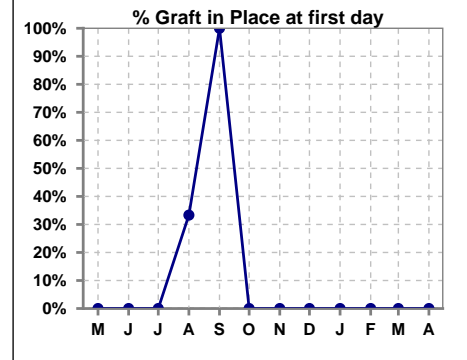
	May	Jun	Jul	Aug	Sep	Oct	Nov	Dec	Jan	Feb	Mar	Apr
# Patient	1	0	2	3	1	0	0	0	0	0	0	0
# Fistula in Place	1	0	2	1	0	0	0	0	0	0	0	0
% Fistula in Place	100%	0%	100%	33%	0%	0%	0%	0%	0%	0%	0%	0%



	May	Jun	Jul	Aug	Sep	Oct	Nov	Dec	Jan	Feb	Mar	Apr
# Patient	1	0	2	3	1	0	0	0	0	0	0	0
# Graft in use	0	0	0	0	0	0	0	0	0	0	0	0
% Graft in use	0%	0%	0%	0%	0%	0%	0%	0%	0%	0%	0%	0%

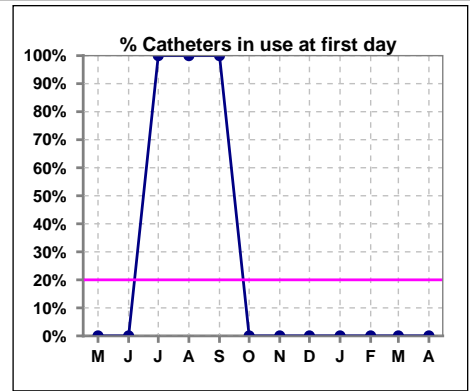


	May	Jun	Jul	Aug	Sep	Oct	Nov	Dec	Jan	Feb	Mar	Apr
# Patient	1	0	2	3	1	0	0	0	0	0	0	0
# Graft in Place	0	0	0	1	1	0	0	0	0	0	0	0
% Graft in Place	0%	0%	0%	33%	100%	0%	0%	0%	0%	0%	0%	0%

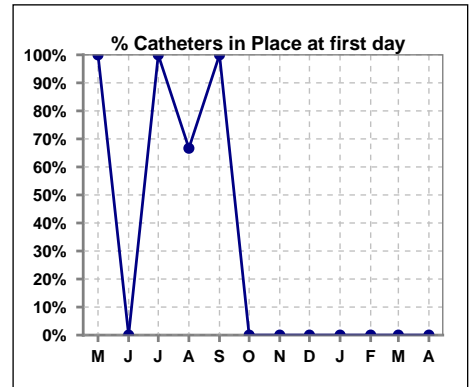


IV. ACCESS - CONT. Access at first day for those patients that reached 90 days within the month.

	May	Jun	Jul	Aug	Sep	Oct	Nov	Dec	Jan	Feb	Mar	Apr
# Patient	1	0	2	3	1	0	0	0	0	0	0	0
# Catheters in use	0	0	2	3	1	0	0	0	0	0	0	0
% Catheters in use	0%	0%	100%	100%	100%	0%	0%	0%	0%	0%	0%	0%



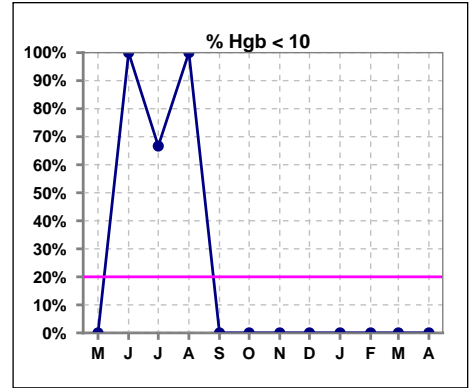
	May	Jun	Jul	Aug	Sep	Oct	Nov	Dec	Jan	Feb	Mar	Apr
# Patient	1	0	2	3	1	0	0	0	0	0	0	0
# Catheters in Place	1	0	2	2	1	0	0	0	0	0	0	0
% Catheters in Place	100%	0%	100%	67%	100%	0%	0%	0%	0%	0%	0%	0%



V. ANEMIA

	May	Jun	Jul	Aug	Sep	Oct	Nov	Dec	Jan	Feb	Mar	Apr
# Hgb	2	3	3	3	0	0	0	0	0	0	0	0
# Hgb <= 10	0	3	2	3	0	0	0	0	0	0	0	0
Pop. Mean	10.3	9.0	9.2	8.1	0	0	0	0	0	0	0	0
Std. Deviation	0.2	1.1	1.4	1.1	0	0	0	0	0	0	0	0
% Hgb <= 10	0%	100%	67%	100%	0%	0%	0%	0%	0%	0%	0%	0%

Note: Excludes patients who received no ESA in month.



	May	Jun	Jul	Aug	Sep	Oct	Nov	Dec	Jan	Feb	Mar	Apr
# Hgb	2	3	3	3	0	0	0	0	0	0	0	0
# Hgb >= 12	0	0	0	0	0	0	0	0	0	0	0	0
Pop. Mean	10.3	9.0	9.2	8.1	0	0	0	0	0	0	0	0
Std. Deviation	0.2	1.1	1.4	1.1	0	0	0	0	0	0	0	0
% Hgb >= 12	0%	0%	0%	0%	0%	0%	0%	0%	0%	0%	0%	0%

Note: Excludes patients who received no ESA in month.

