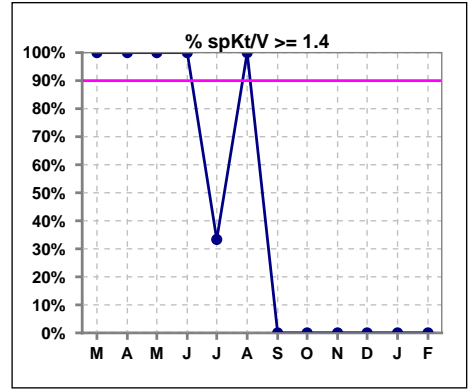
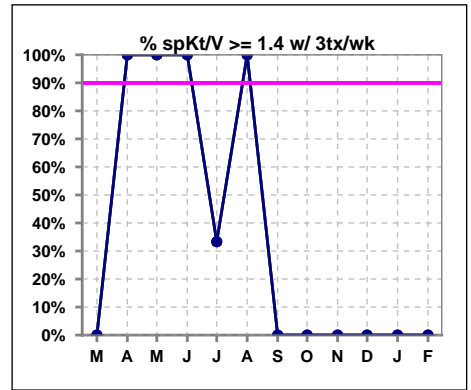


**I. ADEQUACY OF DIALYSIS**

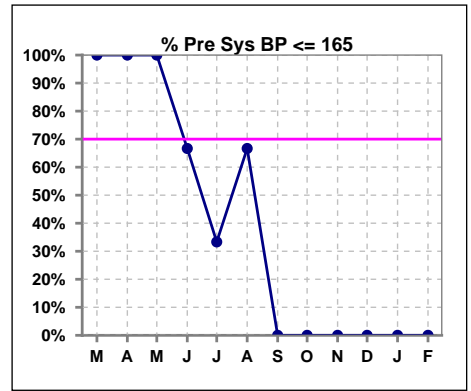
	Mar	Apr	May	Jun	Jul	Aug	Sep	Oct	Nov	Dec	Jan	Feb
# spKt/V	1	3	2	3	3	3	0	0	0	0	0	0
# spKt/V >= 1.4	1	3	2	3	1	3	0	0	0	0	0	0
Pop. Mean	1.47	1.70	1.45	1.77	1.44	1.85	0	0	0	0	0	0
Std. Deviation	0	0.15	0.07	0.51	0.20	0.45	0	0	0	0	0	0
<b>% spKt/V &gt;= 1.4</b>	100%	100%	100%	100%	33%	100%	0%	0%	0%	0%	0%	0%
<b>% spKt/V &gt;= 1.2</b>	100%	100%	100%	100%	100%	100%	0%	0%	0%	0%	0%	0%



	Mar	Apr	May	Jun	Jul	Aug	Sep	Oct	Nov	Dec	Jan	Feb
# spKt/V w/ 3tx/wk	0	1	2	3	3	3	0	0	0	0	0	0
# spKt/V >= 1.4 w/3tx/wk	0	1	2	3	1	3	0	0	0	0	0	0
Pop. Mean	0	1.86	1.45	1.77	1.44	1.85	0	0	0	0	0	0
Std. Deviation	0	0	0.07	0.51	0.20	0.45	0	0	0	0	0	0
<b>% spKt/V &gt;= 1.4 w/3tx/wk</b>	0%	100%	100%	100%	33%	100%	0%	0%	0%	0%	0%	0%



	Mar	Apr	May	Jun	Jul	Aug	Sep	Oct	Nov	Dec	Jan	Feb
# Pre Sys BP	1	3	2	3	3	3	0	0	0	0	0	0
# Pre Sys BP <= 165	1	3	2	2	1	2	0	0	0	0	0	0
Pop. Mean	123	138	138	163	167	159	0	0	0	0	0	0
Std. Deviation	0	9.7	5.7	34.1	3.1	32.5	0	0	0	0	0	0
<b>% Pre Sys BP &lt;= 165</b>	100%	100%	100%	67%	33%	67%	0%	0%	0%	0%	0%	0%

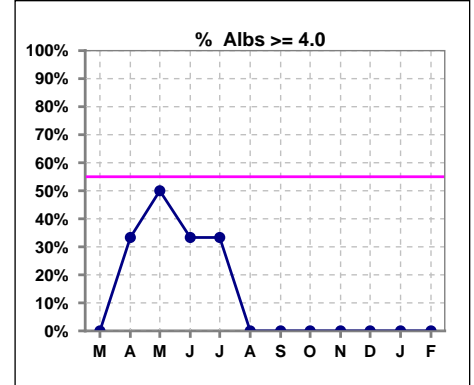


Methodology: a) All labs for 'Adequacy of Dialysis', 'Nutrition', 'Osteodystrophy', 'Anemia' and 'Diabetes' based on last value of month; b) BP's and #L processed are average of all values for month; c) Access data takes last access of month; d) Values for SGA and 'Infection Control' use most recent result.

\*Albumin values use BCG method - as of July 2001

**II. NUTRITION**

	Mar	Apr	May	Jun	Jul	Aug	Sep	Oct	Nov	Dec	Jan	Feb
# Albumin	1	3	2	3	3	3	0	0	0	0	0	0
# Albumin >= 4.0	0	1	1	1	1	0	0	0	0	0	0	0
Pop. Mean	3.1	3.8	4.0	3.8	3.5	3.3	0	0	0	0	0	0
Std. Deviation	0	0.46	0.21	0.25	0.67	0.75	0	0	0	0	0	0
% Alb >= 4.0	0%	33%	50%	33%	33%	0%	0%	0%	0%	0%	0%	0%

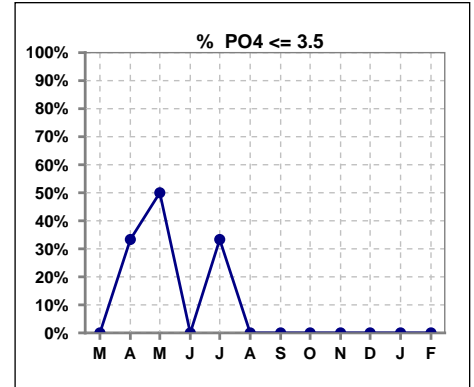


Methodology: a) All labs for 'Adequacy of Dialysis', 'Nutrition', 'Osteodystrophy', 'Anemia' and 'Diabetes' based on last value of month; b) BP's and #L processed are average of all values for month; c) Access data takes last access of month; d) Values for SGA and 'Infection Control' use most recent result.

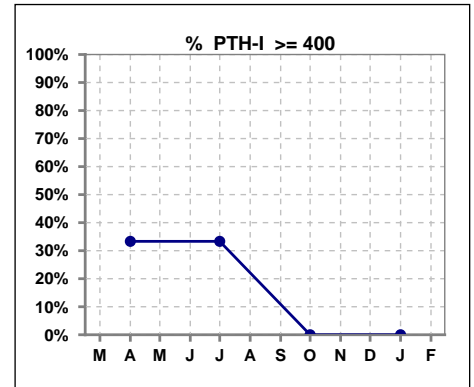
Lab methodology for PTH changed January 2012

**III. OSTEODYSTROPHY**

	Mar	Apr	May	Jun	Jul	Aug	Sep	Oct	Nov	Dec	Jan	Feb
# PO4	1	3	2	3	3	3	0	0	0	0	0	0
# PO4 <= 3.5	0	1	1	0	1	0	0	0	0	0	0	0
Pop. Mean	4.8	4.0	3.8	5.3	4.9	8.2	0	0	0	0	0	0
Std. Deviation	0	1.17	1.98	1.36	2.06	0.98	0	0	0	0	0	0
% PO4 <= 3.5	0%	33%	50%	0%	33%	0%	0%	0%	0%	0%	0%	0%



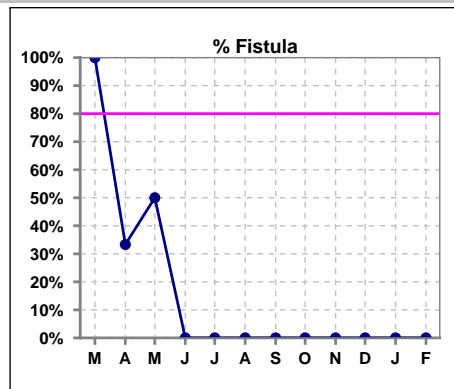
	Mar	Apr	May	Jun	Jul	Aug	Sep	Oct	Nov	Dec	Jan	Feb
# PTH-I		3			3			0			0	
# PTH-I >= 400		1			1			0			0	
Pop. Mean		274			288			0			0	
Std. Deviation		180			184			0			0	
% PTH-I >= 400		33%			33%			0%			0%	



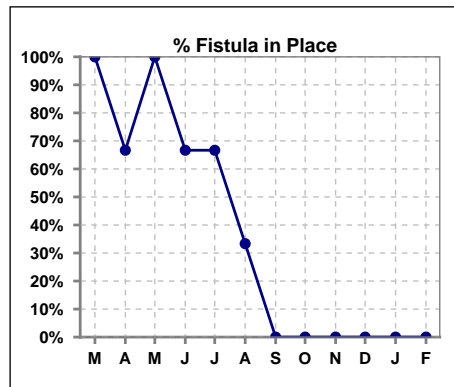
Methodology: a) All labs for 'Adequacy of Dialysis', 'Nutrition', 'Osteodystrophy', 'Anemia' and 'Diabetes' based on last value of month; b) BP's and #L processed are average of all values for month; c) Access data takes last access of month; d) Values for SGA and 'Infection Control' use most recent result.

**IV. ACCESS**

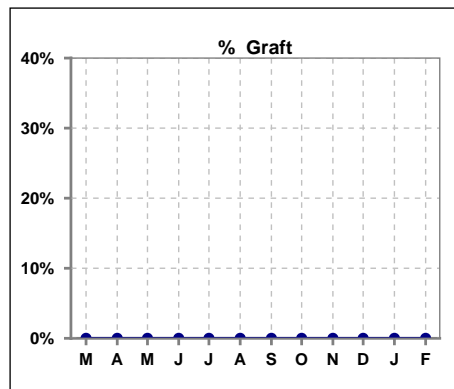
	Mar	Apr	May	Jun	Jul	Aug	Sep	Oct	Nov	Dec	Jan	Feb
# Access	1	3	2	3	3	3	0	0	0	0	0	0
# Fistula	1	1	1	0	0	0	0	0	0	0	0	0
% Fistula	100%	33%	50%	0%	0%	0%	0%	0%	0%	0%	0%	0%



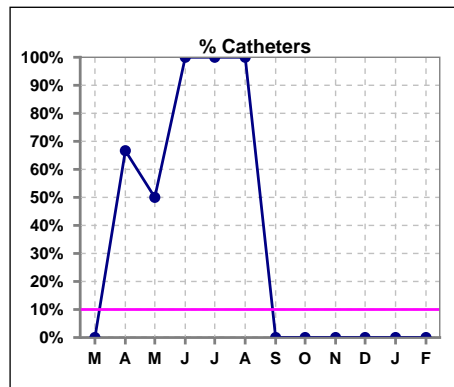
	Mar	Apr	May	Jun	Jul	Aug	Sep	Oct	Nov	Dec	Jan	Feb
# Patient	1	3	2	3	3	3	0	0	0	0	0	0
# Fistula in Place	1	2	2	2	2	1	0	0	0	0	0	0
% Fistula in Place	100%	67%	100%	67%	67%	33%	0%	0%	0%	0%	0%	0%



	Mar	Apr	May	Jun	Jul	Aug	Sep	Oct	Nov	Dec	Jan	Feb
# Access	1	3	2	3	3	3	0	0	0	0	0	0
# Graft	0	0	0	0	0	0	0	0	0	0	0	0
% Graft	0%	0%	0%	0%	0%	0%	0%	0%	0%	0%	0%	0%



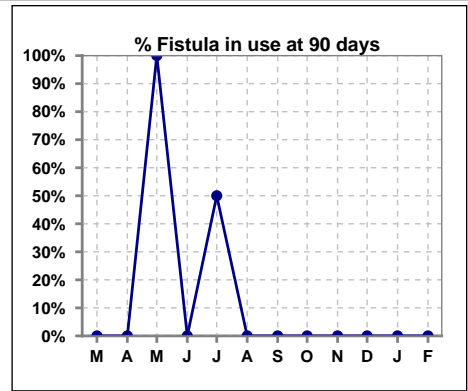
	Mar	Apr	May	Jun	Jul	Aug	Sep	Oct	Nov	Dec	Jan	Feb
# Access	1	3	2	3	3	3	0	0	0	0	0	0
# Catheters	0	2	1	3	3	3	0	0	0	0	0	0
% Catheters	0%	67%	50%	100%	100%	100%	0%	0%	0%	0%	0%	0%



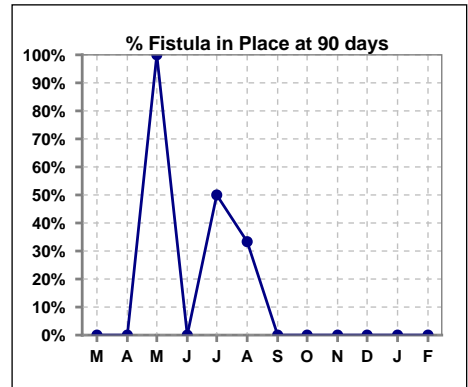
Methodology: a) All labs for 'Adequacy of Dialysis', 'Nutrition', 'Osteodystrophy', 'Anemia' and 'Diabetes' based on last value of month; b) BP's and #L processed are average of all values for month; c) Access data takes last access of month; d) Values for SGA and 'Infection Control' use most recent result.

**IV. ACCESS - CONT. Access at 90 days for those patients that reached 90 days within the month.**

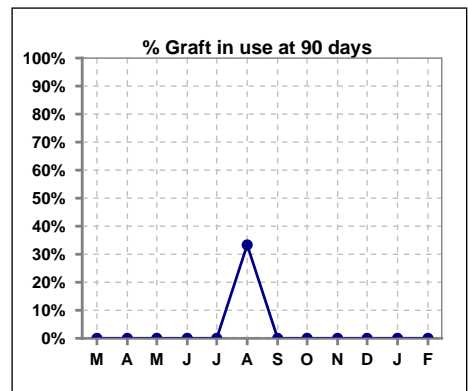
	Mar	Apr	May	Jun	Jul	Aug	Sep	Oct	Nov	Dec	Jan	Feb
# Patient	0	0	1	0	2	3	1	0	0	0	0	0
# Fistula in use	0	0	1	0	1	0	0	0	0	0	0	0
% Fistula in use	0%	0%	100%	0%	50%	0%	0%	0%	0%	0%	0%	0%



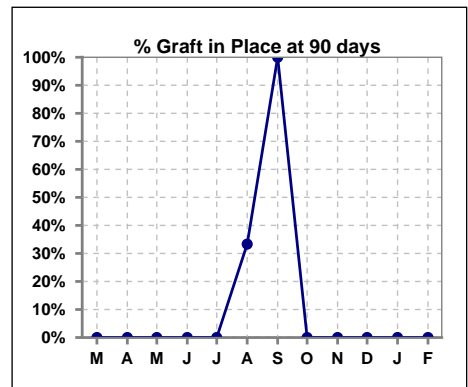
	Mar	Apr	May	Jun	Jul	Aug	Sep	Oct	Nov	Dec	Jan	Feb
# Patient	0	0	1	0	2	3	1	0	0	0	0	0
# Fistula in Place	0	0	1	0	1	1	0	0	0	0	0	0
% Fistula in Place	0%	0%	100%	0%	50%	33%	0%	0%	0%	0%	0%	0%



	Mar	Apr	May	Jun	Jul	Aug	Sep	Oct	Nov	Dec	Jan	Feb
# Patient	0	0	1	0	2	3	1	0	0	0	0	0
# Graft in use	0	0	0	0	0	1	0	0	0	0	0	0
% Graft in use	0%	0%	0%	0%	0%	33%	0%	0%	0%	0%	0%	0%



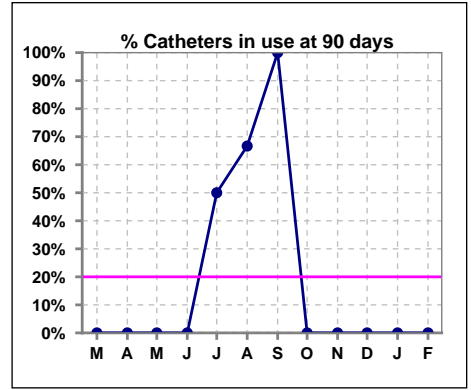
	Mar	Apr	May	Jun	Jul	Aug	Sep	Oct	Nov	Dec	Jan	Feb
# Patient	0	0	1	0	2	3	1	0	0	0	0	0
# Graft in Place	0	0	0	0	0	1	1	0	0	0	0	0
% Graft in Place	0%	0%	0%	0%	0%	33%	100%	0%	0%	0%	0%	0%



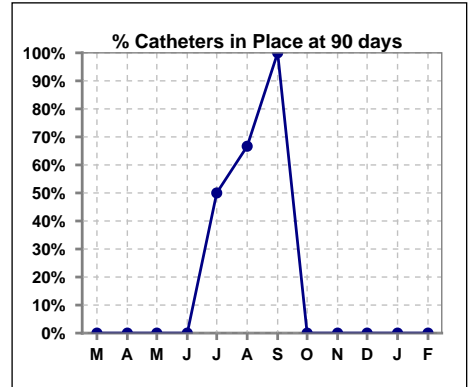
Methodology: a) All labs for 'Adequacy of Dialysis', 'Nutrition', 'Osteodystrophy', 'Anemia' and 'Diabetes' based on last value of month; b) BP's and #L processed are average of all values for month; c) Access data takes last access of month; d) Values for SGA and 'Infection Control' use most recent result.

**IV. ACCESS - CONT. Access at 90 days for those patients that reached 90 days within the month.**

	Mar	Apr	May	Jun	Jul	Aug	Sep	Oct	Nov	Dec	Jan	Feb
# Patient	0	0	1	0	2	3	1	0	0	0	0	0
# Catheters in use	0	0	0	0	1	2	1	0	0	0	0	0
% Catheters in use	0%	0%	0%	0%	50%	67%	100%	0%	0%	0%	0%	0%



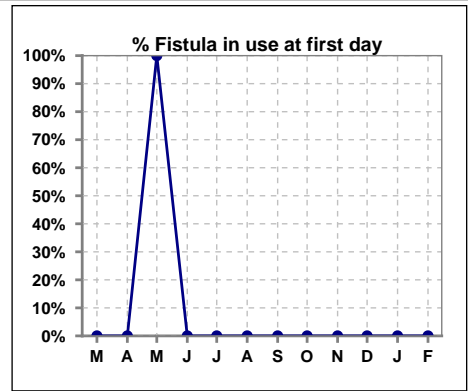
	Mar	Apr	May	Jun	Jul	Aug	Sep	Oct	Nov	Dec	Jan	Feb
# Patient	0	0	1	0	2	3	1	0	0	0	0	0
# Catheters in Place	0	0	0	0	1	2	1	0	0	0	0	0
% Catheters in Place	0%	0%	0%	0%	50%	67%	100%	0%	0%	0%	0%	0%



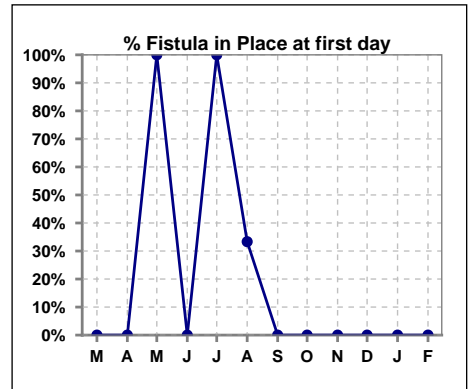
Methodology: a) All labs for 'Adequacy of Dialysis', 'Nutrition', 'Osteodystrophy', 'Anemia' and 'Diabetes' based on last value of month; b) BP's and #L processed are average of all values for month; c) Access data takes last access of month; d) Values for SGA and 'Infection Control' use most recent result.

**IV. ACCESS - CONT. Access at first day for those patients that reached 90 days within the month.**

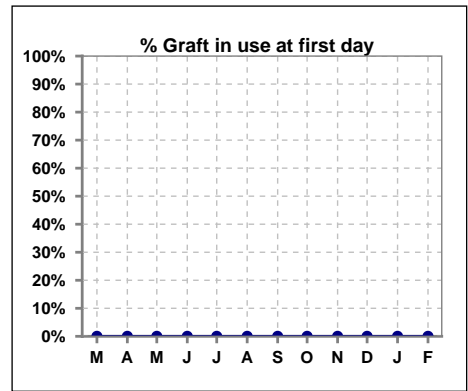
	Mar	Apr	May	Jun	Jul	Aug	Sep	Oct	Nov	Dec	Jan	Feb
# Patient	0	0	1	0	2	3	1	0	0	0	0	0
# Fistula in use	0	0	1	0	0	0	0	0	0	0	0	0
% Fistula in use	0%	0%	100%	0%	0%	0%	0%	0%	0%	0%	0%	0%



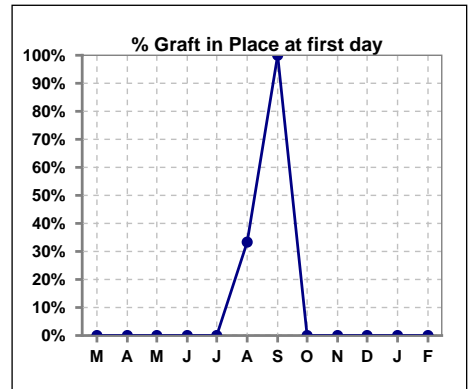
	Mar	Apr	May	Jun	Jul	Aug	Sep	Oct	Nov	Dec	Jan	Feb
# Patient	0	0	1	0	2	3	1	0	0	0	0	0
# Fistula in Place	0	0	1	0	2	1	0	0	0	0	0	0
% Fistula in Place	0%	0%	100%	0%	100%	33%	0%	0%	0%	0%	0%	0%



	Mar	Apr	May	Jun	Jul	Aug	Sep	Oct	Nov	Dec	Jan	Feb
# Patient	0	0	1	0	2	3	1	0	0	0	0	0
# Graft in use	0	0	0	0	0	0	0	0	0	0	0	0
% Graft in use	0%	0%	0%	0%	0%	0%	0%	0%	0%	0%	0%	0%



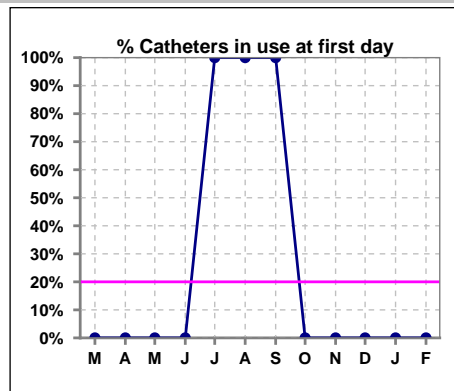
	Mar	Apr	May	Jun	Jul	Aug	Sep	Oct	Nov	Dec	Jan	Feb
# Patient	0	0	1	0	2	3	1	0	0	0	0	0
# Graft in Place	0	0	0	0	0	1	1	0	0	0	0	0
% Graft in Place	0%	0%	0%	0%	0%	33%	100%	0%	0%	0%	0%	0%



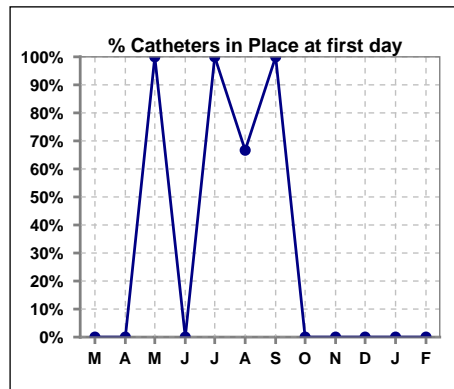
Methodology: a) All labs for 'Adequacy of Dialysis', 'Nutrition', 'Osteodystrophy', 'Anemia' and 'Diabetes' based on last value of month; b) BP's and #L processed are average of all values for month; c) Access data takes last access of month; d) Values for SGA and 'Infection Control' use most recent result.

**IV. ACCESS - CONT. Access at first day for those patients that reached 90 days within the month.**

	Mar	Apr	May	Jun	Jul	Aug	Sep	Oct	Nov	Dec	Jan	Feb
# Patient	0	0	1	0	2	3	1	0	0	0	0	0
# Catheters in use	0	0	0	0	2	3	1	0	0	0	0	0
% Catheters in use	0%	0%	0%	0%	100%	100%	100%	0%	0%	0%	0%	0%



	Mar	Apr	May	Jun	Jul	Aug	Sep	Oct	Nov	Dec	Jan	Feb
# Patient	0	0	1	0	2	3	1	0	0	0	0	0
# Catheters in Place	0	0	1	0	2	2	1	0	0	0	0	0
% Catheters in Place	0%	0%	100%	0%	100%	67%	100%	0%	0%	0%	0%	0%



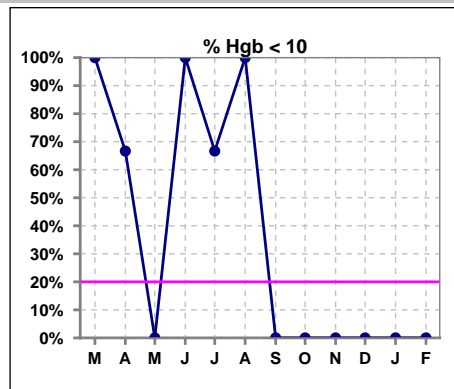
Methodology: a) All labs for 'Adequacy of Dialysis', 'Nutrition', 'Osteodystrophy', 'Anemia' and 'Diabetes' based on last value of month; b) BP's and #L processed are average of all values for month; c) Access data takes last access of month; d) Values for SGA and 'Infection Control' use most recent result.



**V. ANEMIA**

	Mar	Apr	May	Jun	Jul	Aug	Sep	Oct	Nov	Dec	Jan	Feb
# Hgb	1	3	2	3	3	3	0	0	0	0	0	0
# Hgb <= 10	1	2	0	3	2	3	0	0	0	0	0	0
Pop. Mean	8.4	9.3	10.3	9.0	9.2	8.1	0	0	0	0	0	0
Std. Deviation	0	1.1	0.2	1.1	1.4	1.1	0	0	0	0	0	0
<b>% Hgb &lt;= 10</b>	<b>100%</b>	<b>67%</b>	<b>0%</b>	<b>100%</b>	<b>67%</b>	<b>100%</b>	<b>0%</b>	<b>0%</b>	<b>0%</b>	<b>0%</b>	<b>0%</b>	<b>0%</b>

Note: Excludes patients who received no ESA in month.



	Mar	Apr	May	Jun	Jul	Aug	Sep	Oct	Nov	Dec	Jan	Feb
# Hgb	1	3	2	3	3	3	0	0	0	0	0	0
# Hgb >= 12	0	0	0	0	0	0	0	0	0	0	0	0
Pop. Mean	8.4	9.3	10.3	9.0	9.2	8.1	0	0	0	0	0	0
Std. Deviation	0	1.1	0.2	1.1	1.4	1.1	0	0	0	0	0	0
<b>% Hgb &gt;= 12</b>	<b>0%</b>	<b>0%</b>	<b>0%</b>	<b>0%</b>	<b>0%</b>	<b>0%</b>	<b>0%</b>	<b>0%</b>	<b>0%</b>	<b>0%</b>	<b>0%</b>	<b>0%</b>

Note: Excludes patients who received no ESA in month.

