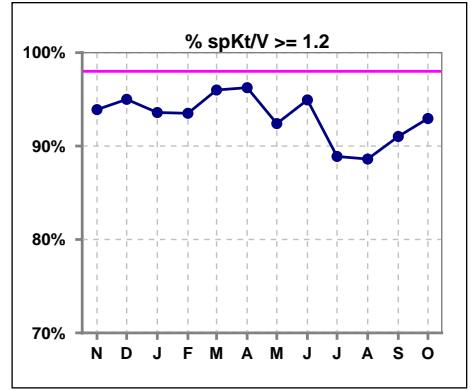
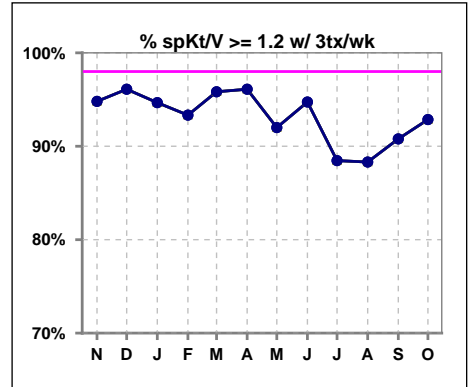


**I. ADEQUACY OF DIALYSIS**

	Nov	Dec	Jan	Feb	Mar	Apr	May	Jun	Jul	Aug	Sep	Oct
# spKt/V	82	80	78	77	75	80	79	79	81	79	78	156
# spKt/V >= 1.2	77	76	73	72	72	77	73	75	72	70	71	145
Pop. Mean	1.61	1.59	1.65	1.60	1.61	1.63	1.52	1.54	1.55	1.50	1.55	1.55
Std. Deviation	0.33	0.30	0.34	0.30	0.31	0.36	0.34	0.33	0.31	0.31	0.30	0.28
% spKt/V >= 1.2	94%	95%	94%	94%	96%	96%	92%	95%	89%	89%	91%	93%

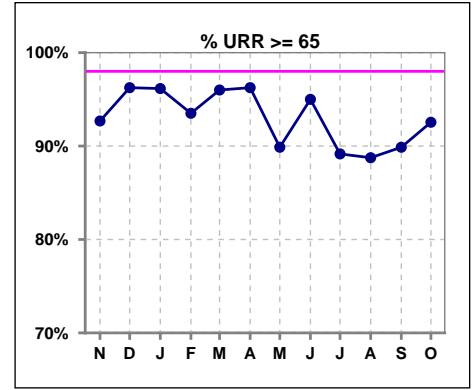


	Nov	Dec	Jan	Feb	Mar	Apr	May	Jun	Jul	Aug	Sep	Oct
# spKt/V w/ 3tx/wk	77	77	75	75	72	77	75	76	78	77	76	154
# spKt/V >= 1.2 w/3tx/wk	73	74	71	70	69	74	69	72	69	68	69	143
Pop. Mean	1.63	1.60	1.66	1.61	1.61	1.63	1.51	1.54	1.55	1.50	1.55	1.55
Std. Deviation	0.32	0.29	0.33	0.31	0.31	0.35	0.34	0.33	0.32	0.31	0.31	0.28
% >= 1.2 w/3tx/wk	95%	96%	95%	93%	96%	96%	92%	95%	88%	88%	91%	93%

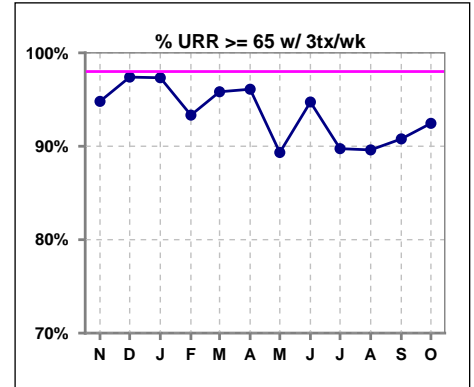


**I. ADEQUACY OF DIALYSIS - CONT.**

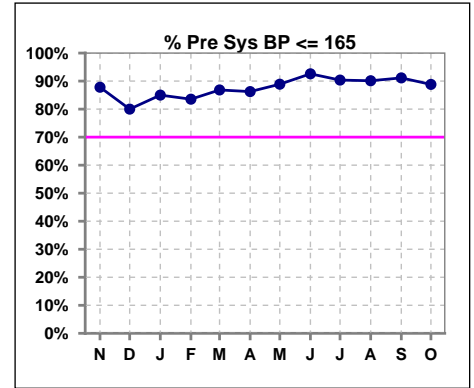
	Nov	Dec	Jan	Feb	Mar	Apr	May	Jun	Jul	Aug	Sep	Oct
# URR	82	80	78	77	75	80	79	80	83	80	79	161
# URR >= 65	76	77	75	72	72	77	71	76	74	71	71	149
Pop. Mean	74	74	75	74	74	75	72	73	74	72	73	73
Std. Deviation	7.58	6.42	6.63	6.04	7.09	6.50	8.93	7.02	7.36	8.13	7.70	7.28
% URR >= 65	93%	96%	96%	94%	96%	96%	90%	95%	89%	89%	90%	93%



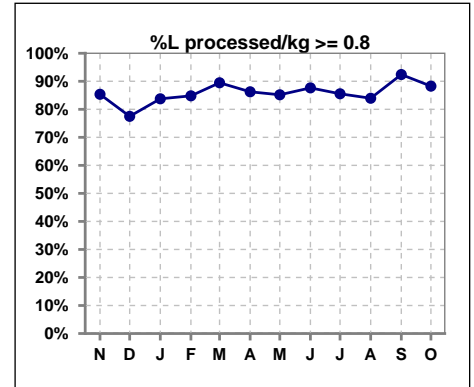
	Nov	Dec	Jan	Feb	Mar	Apr	May	Jun	Jul	Aug	Sep	Oct
# URR w/ 3tx/wk	77	77	75	75	72	77	75	76	78	77	76	159
# URR>=65 w/ 3tx/wk	73	75	73	70	69	74	67	72	70	69	69	147
Pop. Mean	75	74	75	74	74	74	72	73	74	72	73	73
Std. Deviation	7.39	6.07	6.41	6.08	7.13	6.41	9.01	7.02	7.41	8.16	7.66	7.28
% URR>=65 w/ 3tx/wk	95%	97%	97%	93%	96%	96%	89%	95%	90%	90%	91%	92%



	Nov	Dec	Jan	Feb	Mar	Apr	May	Jun	Jul	Aug	Sep	Oct
# Pre Sys BP	82	80	80	79	76	80	81	81	83	81	79	161
# Pre Sys BP <= 165	72	65	70	67	67	71	72	76	75	75	72	146
Pop. Mean	142	144	144	145	145	144	140	142	137	141	141	143
Std. Deviation	18.0	19.6	17.6	19.7	17.6	19.4	19.9	18.1	19.8	18.7	18.7	19.5
% Pre Sys BP <=165	88%	80%	85%	84%	87%	86%	89%	93%	90%	90%	91%	89%



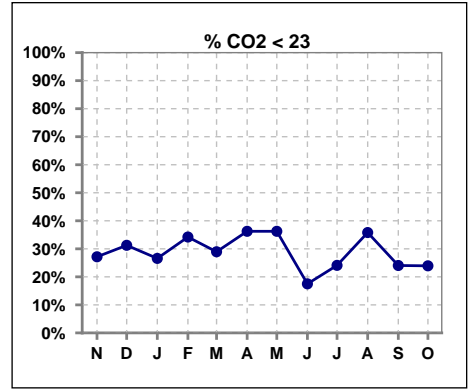
	Nov	Dec	Jan	Feb	Mar	Apr	May	Jun	Jul	Aug	Sep	Oct
# L processed/kg	82	80	80	79	76	80	81	81	83	81	79	162
# L processed/kg>=0.8	70	62	67	67	68	69	69	71	71	68	73	143
Pop. Mean	1	1	1	1	1	1	1	1	1	1	1	1
Std. Deviation	0.3	0.3	0.3	0.3	0.3	0.3	0.3	0.3	0.3	0.3	0.2	0.3
% L processed/kg>=0.8	85%	78%	84%	85%	89%	86%	85%	88%	86%	84%	92%	88%



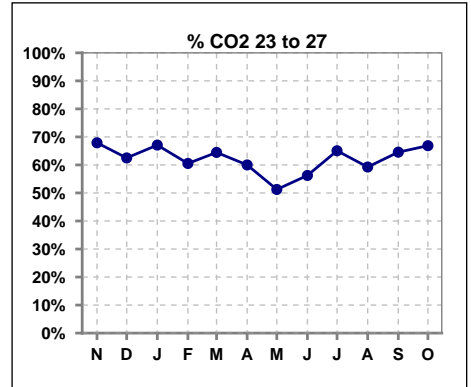
Methodology: a) All labs for 'Adequacy of Dialysis', 'Nutrition', 'Osteodystrophy', 'Anemia' and 'Diabetes' based on last value of month; b) BP's and #L processed are average of all values for month; c) Access data takes last access of month; d) Values for SGA and 'Infection Control' use most recent result.

**I. ADEQUACY OF DIALYSIS - CONT.**

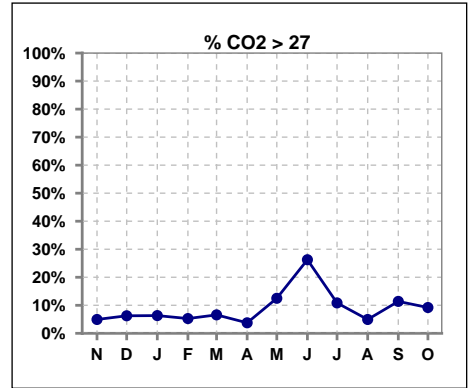
	Nov	Dec	Jan	Feb	Mar	Apr	May	Jun	Jul	Aug	Sep	Oct
# CO2	81	80	79	76	76	80	80	80	83	81	79	163
# CO2 < 23	22	25	21	26	22	29	29	14	20	29	19	39
Pop. Mean	24	24	24	23	24	23	24	25	24	23	24	24
Std. Deviation	2.42	2.81	3.35	2.55	2.75	3.02	3.63	3.01	3.47	3.45	2.84	3.01
% CO2 < 23	27%	31%	27%	34%	29%	36%	36%	18%	24%	36%	24%	24%



	Nov	Dec	Jan	Feb	Mar	Apr	May	Jun	Jul	Aug	Sep	Oct
# CO2	81	80	79	76	76	80	80	80	83	81	79	163
# CO2 23 to 27	55	50	53	46	49	48	41	45	54	48	51	109
Pop. Mean	24	24	24	23	24	23	24	25	24	23	24	24
Std. Deviation	2.42	2.81	3.35	2.55	2.75	3.02	3.63	3.01	3.47	3.45	2.84	3.01
% CO2 23 to 27	68%	63%	67%	61%	64%	60%	51%	56%	65%	59%	65%	67%



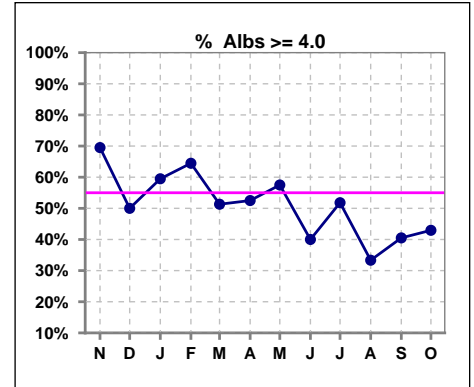
	Nov	Dec	Jan	Feb	Mar	Apr	May	Jun	Jul	Aug	Sep	Oct
# CO2	81	80	79	76	76	80	80	80	83	81	79	163
# CO2 > 27	4	5	5	4	5	3	10	21	9	4	9	15
Pop. Mean	24	24	24	23	24	23	24	25	24	23	24	24
Std. Deviation	2.42	2.81	3.35	2.55	2.75	3.02	3.63	3.01	3.47	3.45	2.84	3.01
% CO2 > 27	5%	6%	6%	5%	7%	4%	13%	26%	11%	5%	11%	9%



\*Albumin values use BCG method - as of July 2001

**II. NUTRITION**

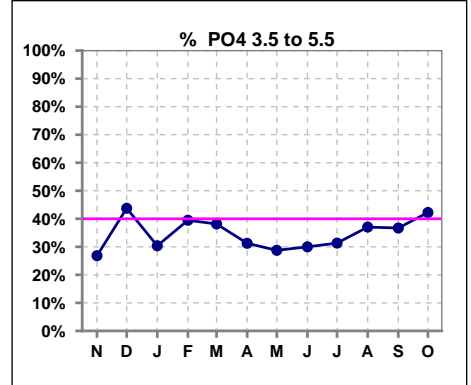
	Nov	Dec	Jan	Feb	Mar	Apr	May	Jun	Jul	Aug	Sep	Oct
# Albumin	82	80	79	76	76	80	80	80	83	81	79	163
# Albumin >= 4.0	57	40	47	49	39	42	46	32	43	27	32	70
Pop. Mean	4.0	3.9	4.0	4.0	4.0	3.9	4.0	3.8	3.8	3.7	3.8	3.8
Std. Deviation	0.41	0.36	0.38	0.34	0.36	0.34	0.39	0.44	0.55	0.48	0.41	0.42
% Alb >= 4.0	70%	50%	59%	64%	51%	53%	58%	40%	52%	33%	41%	43%



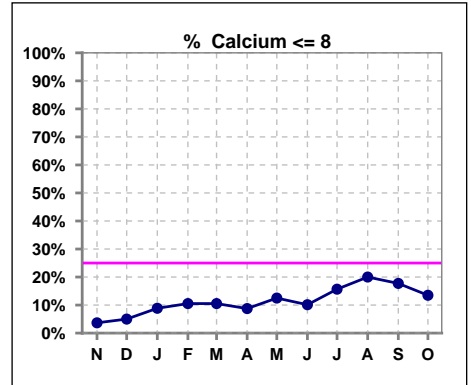
Lab methodology for PTH changed January 2012

**III. OSTEODYSTROPHY**

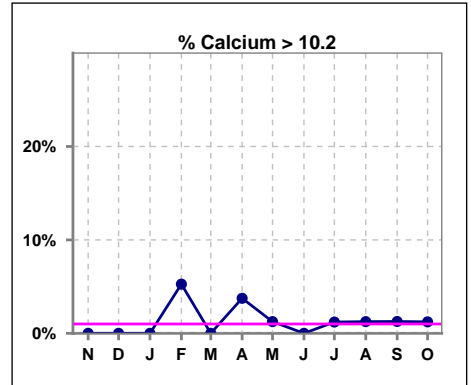
	Nov	Dec	Jan	Feb	Mar	Apr	May	Jun	Jul	Aug	Sep	Oct
# PO4	82	80	79	76	76	80	80	80	83	81	79	161
# PO4 3.5 to 5.5	22	35	24	30	29	25	23	24	26	30	29	68
Pop. Mean	6.4	5.7	6.4	6.4	6.1	6.5	6.5	6.4	6.5	6.5	6.4	6.0
Std. Deviation	2.06	1.87	2.22	2.06	1.81	2.24	2.12	1.96	2.03	2.21	2.08	2.19
% PO4 3.5 to 5.5	27%	44%	30%	39%	38%	31%	29%	30%	31%	37%	37%	42%



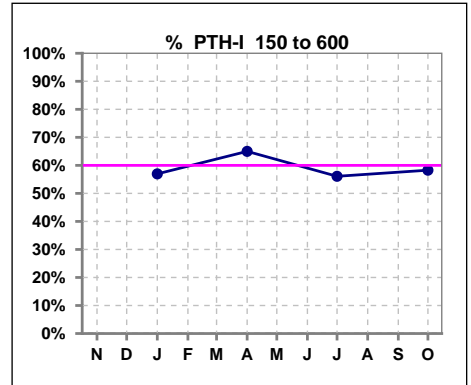
	Nov	Dec	Jan	Feb	Mar	Apr	May	Jun	Jul	Aug	Sep	Oct
# Calcium	82	80	79	76	76	80	80	79	83	80	79	163
# Calcium <= 8	3	4	7	8	8	7	10	8	13	16	14	22
Pop. Mean	9.2	9.1	9.0	9.2	9.0	9.0	9.0	8.9	8.8	8.7	8.7	8.8
Std. Deviation	0.64	0.63	0.68	0.81	0.71	0.73	0.89	0.70	0.85	0.67	0.73	0.73
% Calcium <= 8	4%	5%	9%	11%	11%	9%	13%	10%	16%	20%	18%	13%



	Nov	Dec	Jan	Feb	Mar	Apr	May	Jun	Jul	Aug	Sep	Oct
# Calcium	82	80	79	76	76	80	80	79	83	80	79	163
# Calcium > 10.2	0	0	0	4	0	3	1	0	1	1	1	2
Pop. Mean	9.2	9.1	9.0	9.2	9.0	9.0	9.0	8.9	8.8	8.7	8.7	8.8
Std. Deviation	0.64	0.63	0.68	0.81	0.71	0.73	0.89	0.70	0.85	0.67	0.73	0.73
% Calcium > 10.2	0%	0%	0%	5%	0%	4%	1%	0%	1%	1%	1%	1%



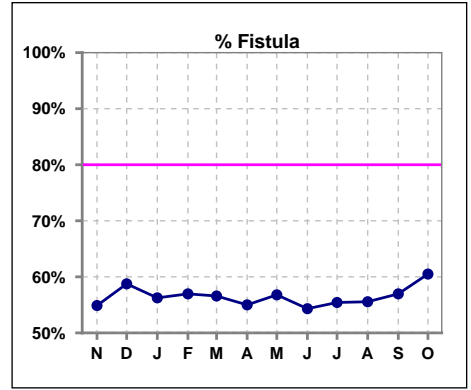
	Nov	Dec	Jan	Feb	Mar	Apr	May	Jun	Jul	Aug	Sep	Oct
# PTH-I			79			80			82			163
# PTH-I 150 to 600			45			52			46			95
Pop. Mean			553			541			608			525
Std. Deviation			533			531			682			423
% PTH-I 150 to 600			57%			65%			56%			58%



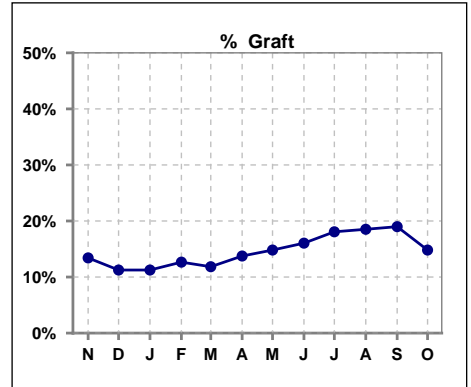
Methodology: a) All labs for 'Adequacy of Dialysis', 'Nutrition', 'Osteodystrophy', 'Anemia' and 'Diabetes' based on last value of month; b) BP's and #L processed are average of all values for month; c) Access data takes last access of month; d) Values for SGA and 'Infection Control' use most recent result.

**IV. ACCESS**

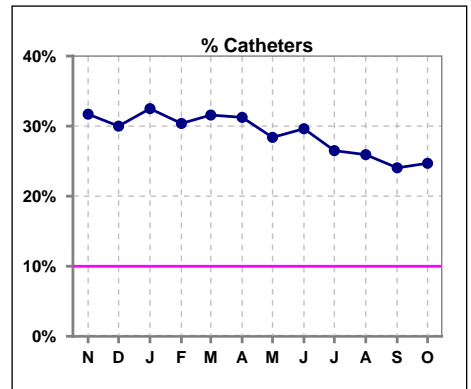
	Nov	Dec	Jan	Feb	Mar	Apr	May	Jun	Jul	Aug	Sep	Oct
# Access	82	80	80	79	76	80	81	81	83	81	79	162
# Fistula	45	47	45	45	43	44	46	44	46	45	45	98
% Fistula	55%	59%	56%	57%	57%	55%	57%	54%	55%	56%	57%	60%



	Nov	Dec	Jan	Feb	Mar	Apr	May	Jun	Jul	Aug	Sep	Oct
# Access	82	80	80	79	76	80	81	81	83	81	79	162
# Graft	11	9	9	10	9	11	12	13	15	15	15	24
% Graft	13%	11%	11%	13%	12%	14%	15%	16%	18%	19%	19%	15%



	Nov	Dec	Jan	Feb	Mar	Apr	May	Jun	Jul	Aug	Sep	Oct
# Access	82	80	80	79	76	80	81	81	83	81	79	162
# Catheters	26	24	26	24	24	25	23	24	22	21	19	40
% Catheters	32%	30%	33%	30%	32%	31%	28%	30%	27%	26%	24%	25%



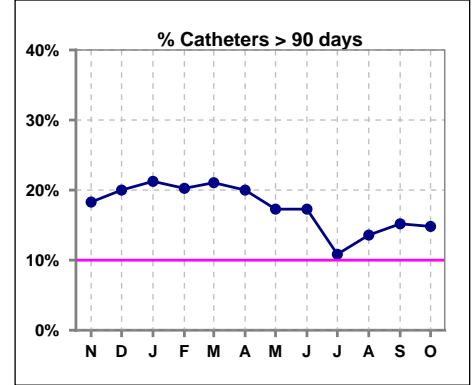
Methodology: a) All labs for 'Adequacy of Dialysis', 'Nutrition', 'Osteodystrophy', 'Anemia' and 'Diabetes' based on last value of month; b) BP's and #L processed are average of all values for month; c) Access data takes last access of month; d) Values for SGA and 'Infection Control' use most recent result.

**IV. ACCESS - CONT.**

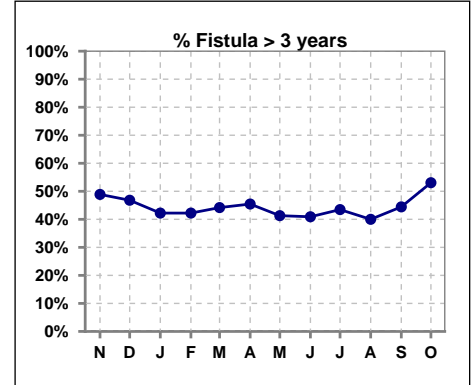
**Catheters > 90 days**

	Nov	Dec	Jan	Feb	Mar	Apr	May	Jun	Jul	Aug	Sep	Oct
<b># Access</b>	82	80	80	79	76	80	81	81	83	81	79	162
<b># Catheters</b>	15	16	17	16	16	16	14	14	9	11	12	24
<b>% Catheters</b>	18%	20%	21%	20%	21%	20%	17%	17%	11%	14%	15%	15%

Definition: Catheter in use on last treatment of the month



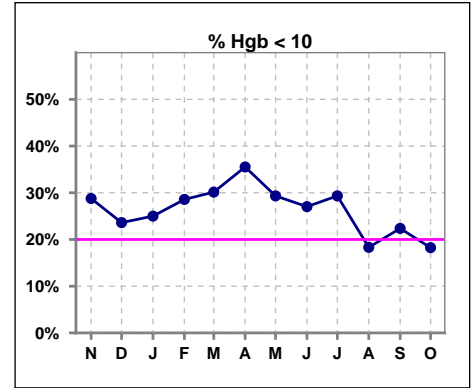
	Nov	Dec	Jan	Feb	Mar	Apr	May	Jun	Jul	Aug	Sep	Oct
<b># Fistula</b>	45	47	45	45	43	44	46	44	46	45	45	98
<b># Fistula &gt; 3 yrs</b>	22	22	19	19	19	20	19	18	20	18	20	52
<b>% Fistula &gt; 3 yrs</b>	49%	47%	42%	42%	44%	45%	41%	41%	43%	40%	44%	53%



**V. ANEMIA**

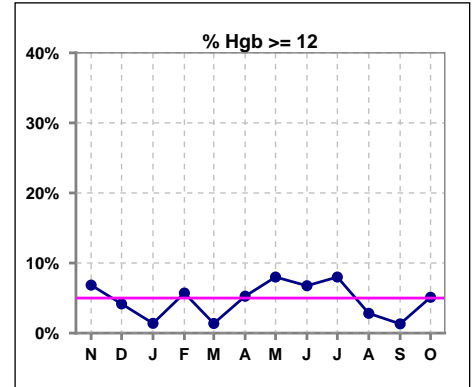
	Nov	Dec	Jan	Feb	Mar	Apr	May	Jun	Jul	Aug	Sep	Oct
# Hgb	73	72	72	70	73	76	75	74	75	71	76	137
# Hgb < 10	21	17	18	20	22	27	22	20	22	13	17	25
Pop. Mean	10.6	10.6	10.6	10.6	10.3	10.4	10.6	10.6	10.6	10.6	10.4	10.7
Std. Deviation	1.3	1.0	1.1	1.2	1.1	1.3	1.3	1.3	1.5	1.2	1.3	1.1
% Hgb < 10	29%	24%	25%	29%	30%	36%	29%	27%	29%	18%	22%	18%

Note: Excludes patients who received no ESA in month.



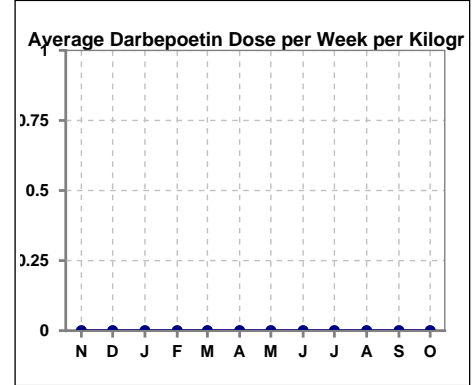
	Nov	Dec	Jan	Feb	Mar	Apr	May	Jun	Jul	Aug	Sep	Oct
# Hgb	73	72	72	70	73	76	75	74	75	71	76	137
# Hgb >= 12	5	3	1	4	1	4	6	5	6	2	1	7
Pop. Mean	10.6	10.6	10.6	10.6	10.3	10.4	10.6	10.6	10.6	10.6	10.4	10.7
Std. Deviation	1.3	1.0	1.1	1.2	1.1	1.3	1.3	1.3	1.5	1.2	1.3	1.1
% Hgb >= 12	7%	4%	1%	6%	1%	5%	8%	7%	8%	3%	1%	5%

Note: Excludes patients who received no ESA in month.



**Average Darbepoetin Dose per Week per Kilogram**

	Nov	Dec	Jan	Feb	Mar	Apr	May	Jun	Jul	Aug	Sep	Oct
# Average Darbepoetin	0	0	0	0	0	0	0	0	0	0	0	0



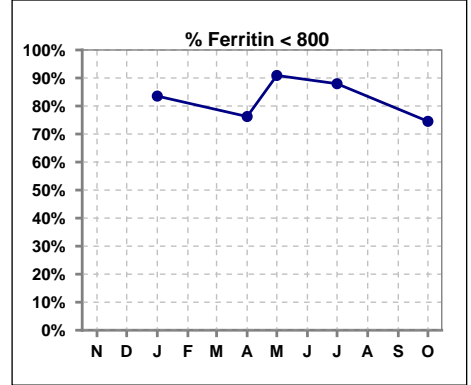
Methodology: a) All labs for 'Adequacy of Dialysis', 'Nutrition', 'Osteodystrophy', 'Anemia' and 'Diabetes' based on last value of month; b) BP's and #L processed are average of all values for month; c) Access data takes last access of month; d) Values for SGA and 'Infection Control' use most recent result.



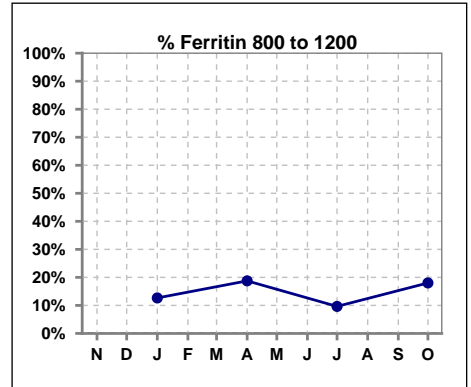
**V. ANEMIA - CONT.**

**Iron Profile**

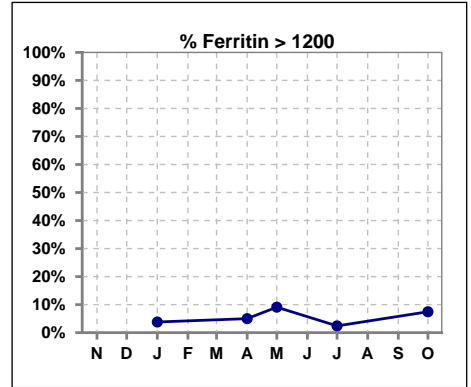
	Nov	Dec	Jan	Feb	Mar	Apr	May	Jun	Jul	Aug	Sep	Oct
# Ferritin			79			80	11		83			161
# Ferritin < 800			66			61	10		73			120
Pop. Mean			463			531	470		455			564
Std. Deviation			322			384	394		320			376
<b>% Ferritin &lt; 800</b>			<b>84%</b>			<b>76%</b>	<b>91%</b>		<b>88%</b>			<b>75%</b>



	Nov	Dec	Jan	Feb	Mar	Apr	May	Jun	Jul	Aug	Sep	Oct
# Ferritin			79			80	11		83			161
# Ferritin 800 to 1200			10			15			8			29
Pop. Mean			463			531	470		455			564
Std. Deviation			322			384	394		320			376
<b>% Ferritin 800 to 1200</b>			<b>13%</b>			<b>19%</b>			<b>10%</b>			<b>18%</b>



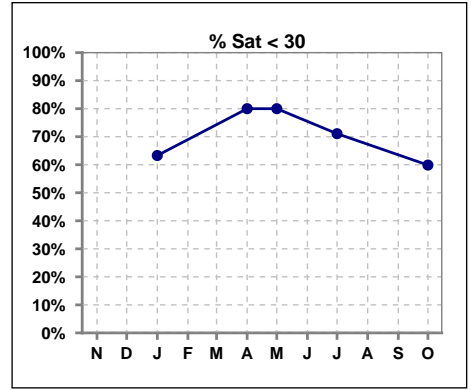
	Nov	Dec	Jan	Feb	Mar	Apr	May	Jun	Jul	Aug	Sep	Oct
# Ferritin			79			80	11		83			161
# Ferritin > 1200			3			4	1		2			12
Pop. Mean			463			531	470		455			564
Std. Deviation			322			384	394		320			376
<b>% Ferritin &gt; 1200</b>			<b>4%</b>			<b>5%</b>	<b>9%</b>		<b>2%</b>			<b>7%</b>



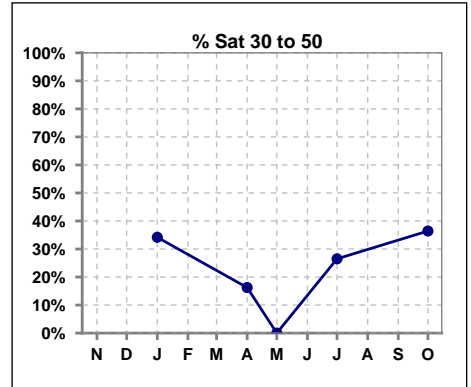
Methodology: a) All labs for 'Adequacy of Dialysis', 'Nutrition', 'Osteodystrophy', 'Anemia' and 'Diabetes' based on last value of month; b) BP's and #L processed are average of all values for month; c) Access data takes last access of month; d) Values for SGA and 'Infection Control' use most recent result.

**V. ANEMIA - CONT.**

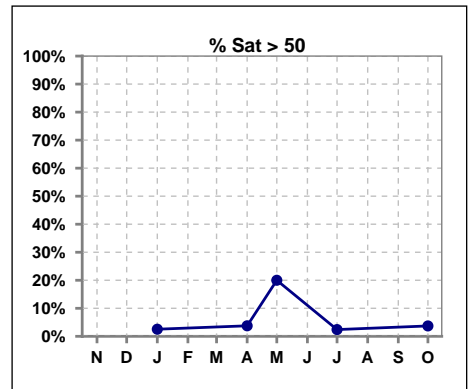
	Nov	Dec	Jan	Feb	Mar	Apr	May	Jun	Jul	Aug	Sep	Oct
# % Sat			79			80	10		83			162
# % Sat < 30			50			64	8		59			97
Pop. Mean			26			24	27		24			28
Std. Deviation			12			14	24		10			13
<b>% % Sat &lt; 30</b>			63%			80%	80%		71%			60%



	Nov	Dec	Jan	Feb	Mar	Apr	May	Jun	Jul	Aug	Sep	Oct
# % Sat			79			80	10		83			162
# % Sat 30 to 50			27			13	0		22			59
Pop. Mean			26			24	27		24			28
Std. Deviation			12			14	24		10			13
<b>% % Sat 30 to 50</b>			34%			16%	0%		27%			36%

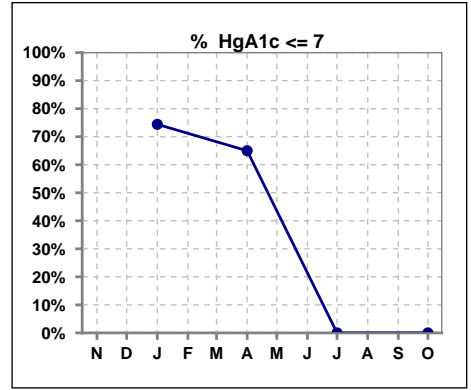


	Nov	Dec	Jan	Feb	Mar	Apr	May	Jun	Jul	Aug	Sep	Oct
# % Sat			79			80	10		83			162
# % Sat > 50			2			3	2		2			6
Pop. Mean			26			24	27		24			28
Std. Deviation			12			14	24		10			13
<b>% % Sat &gt; 50</b>			3%			4%	20%		2%			4%



**VI. Diabetes**

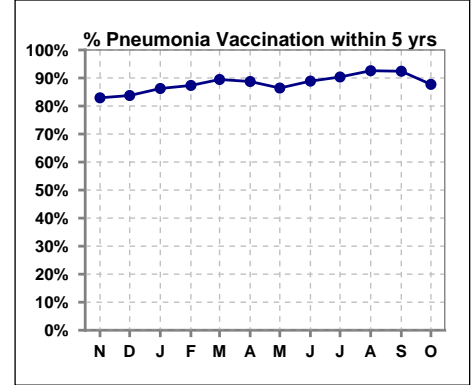
	Nov	Dec	Jan	Feb	Mar	Apr	May	Jun	Jul	Aug	Sep	Oct
# HgA1c			43			40			0			0
# HgA1c <= 7			32			26			0			0
Pop. Mean			6.4			6.8			0			0
Std. Deviation			1.74			1.98			0			0
<b>% HgA1c &lt;= 7</b>			<b>74%</b>			<b>65%</b>			<b>0%</b>			<b>0%</b>



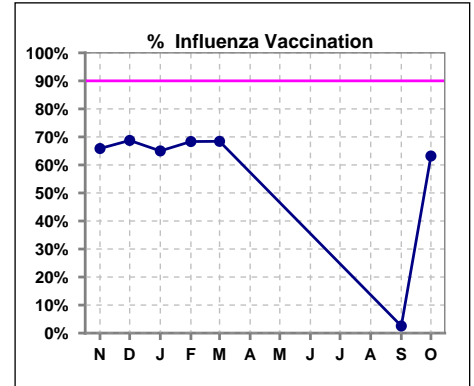
**VII. Infection Control**

**Pneumonia vaccination within the past five years**

	Nov	Dec	Jan	Feb	Mar	Apr	May	Jun	Jul	Aug	Sep	Oct
# Patient	82	80	80	79	76	80	81	81	83	81	79	163
# Pneumonia	68	67	69	69	68	71	70	72	75	75	73	143
% Pneumonia	83%	84%	86%	87%	89%	89%	86%	89%	90%	93%	92%	88%



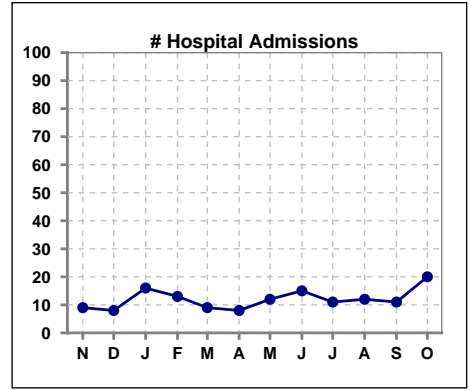
	Nov	Dec	Jan	Feb	Mar	Apr	May	Jun	Jul	Aug	Sep	Oct
# Patient	82	80	80	79	76						79	163
# Influenza	54	55	52	54	52						2	103
% Influenza	66%	69%	65%	68%	68%						3%	63%



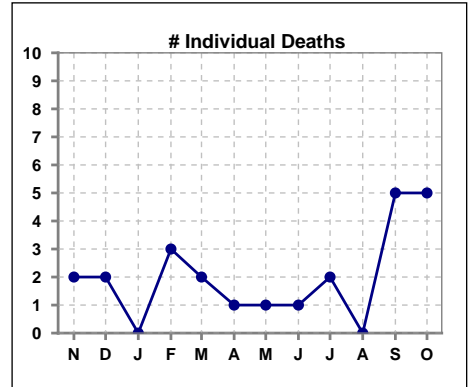
Methodology: a) All labs for 'Adequacy of Dialysis', 'Nutrition', 'Osteodystrophy', 'Anemia' and 'Diabetes' based on last value of month; b) BP's and #L processed are average of all values for month; c) Access data takes last access of month; d) Values for SGA and 'Infection Control' use most recent result.

**VIII. Outcome measures**

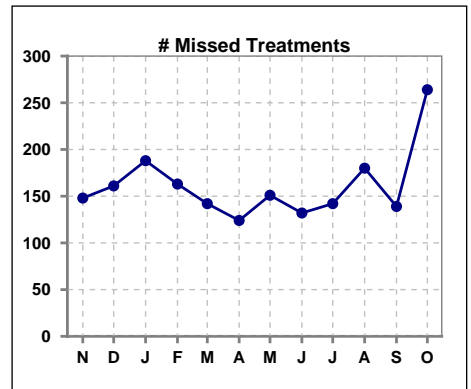
	Nov	Dec	Jan	Feb	Mar	Apr	May	Jun	Jul	Aug	Sep	Oct
# Patient	82	80	80	79	76	80	81	81	83	81	79	163
# Hospital Admissions	9	8	16	13	9	8	12	15	11	12	11	20



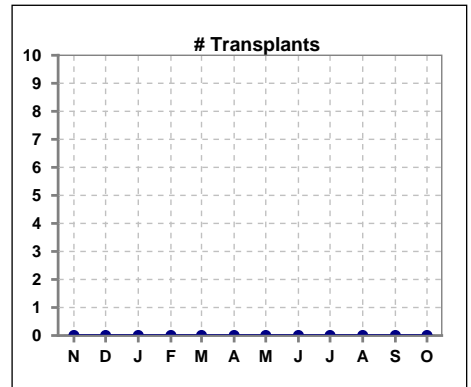
	Nov	Dec	Jan	Feb	Mar	Apr	May	Jun	Jul	Aug	Sep	Oct
# Patient	82	80	80	79	76	80	81	81	83	81	79	163
# Individual Deaths	2	2	0	3	2	1	1	1	2	0	5	5



	Nov	Dec	Jan	Feb	Mar	Apr	May	Jun	Jul	Aug	Sep	Oct
# Patient	82	80	80	79	76	80	81	81	83	81	79	163
# Missed Treatments	148	161	188	163	142	124	151	132	142	180	139	264



	Nov	Dec	Jan	Feb	Mar	Apr	May	Jun	Jul	Aug	Sep	Oct
# Patient	82	80	80	79	76	80	81	81	83	81	79	163
# Transplants	0	0	0	0	0	0	0	0	0	0	0	0



Methodology: a) All labs for 'Adequacy of Dialysis', 'Nutrition', 'Osteodystrophy', 'Anemia' and 'Diabetes' based on last value of month; b) BP's and #L processed are average of all values for month; c) Access data takes last access of month; d) Values for SGA and 'Infection Control' use most recent result.