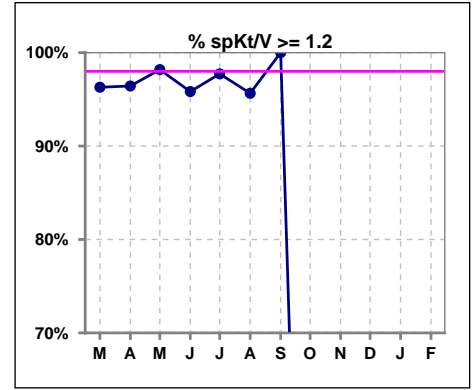
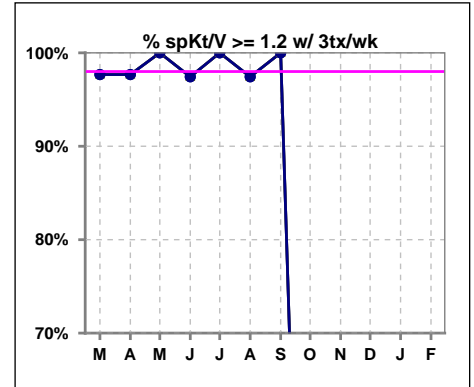


I. ADEQUACY OF DIALYSIS

	Mar	Apr	May	Jun	Jul	Aug	Sep	Oct	Nov	Dec	Jan	Feb
# spKt/V	54	56	55	48	44	46	44	0	0	0	0	0
# spKt/V >= 1.2	52	54	54	46	43	44	44	0	0	0	0	0
Pop. Mean	1.66	1.64	1.63	1.56	1.55	1.59	1.61	0	0	0	0	0
Std. Deviation	0.41	0.29	0.29	0.35	0.29	0.31	0.27	0	0	0	0	0
% spKt/V >= 1.2	96%	96%	98%	96%	98%	96%	100%	0%	0%	0%	0%	0%



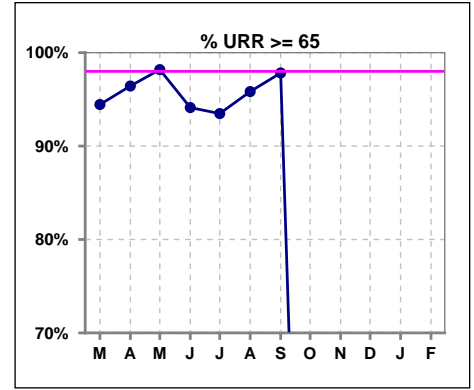
	Mar	Apr	May	Jun	Jul	Aug	Sep	Oct	Nov	Dec	Jan	Feb
# spKt/V w/ 3tx/wk	43	43	42	39	37	39	38	0	0	0	0	0
# spKt/V >= 1.2 w/3tx/wk	42	42	42	38	37	38	38	0	0	0	0	0
Pop. Mean	1.70	1.68	1.65	1.58	1.58	1.61	1.60	0	0	0	0	0
Std. Deviation	0.43	0.29	0.31	0.37	0.27	0.29	0.28	0	0	0	0	0
% >= 1.2 w/3tx/wk	98%	98%	100%	97%	100%	97%	100%	0%	0%	0%	0%	0%



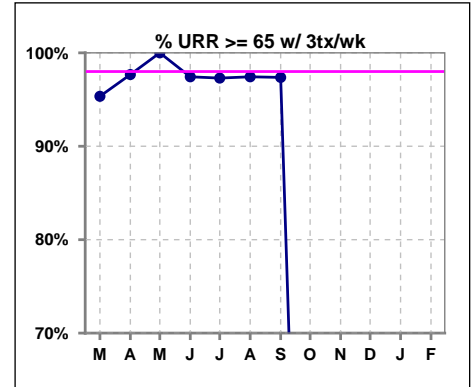
Methodology: a) All labs for 'Adequacy of Dialysis', 'Nutrition', 'Osteodystrophy', 'Anemia' and 'Diabetes' based on last value of month; b) BP's and #L processed are average of all values for month; c) Access data takes last access of month; d) Values for SGA and 'Infection Control' use most recent result.

I. ADEQUACY OF DIALYSIS - CONT.

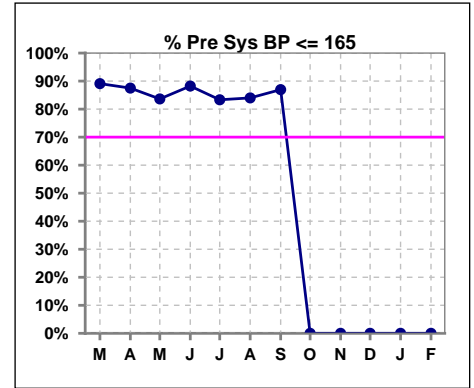
	Mar	Apr	May	Jun	Jul	Aug	Sep	Oct	Nov	Dec	Jan	Feb
# URR	54	56	55	51	46	48	46	0	0	0	0	0
# URR >= 65	51	54	54	48	43	46	45	0	0	0	0	0
Pop. Mean	75	75	75	73	73	74	75	0	0	0	0	0
Std. Deviation	7.02	5.61	5.17	5.94	6.67	6.55	5.55	0	0	0	0	0
% URR >= 65	94%	96%	98%	94%	93%	96%	98%	0%	0%	0%	0%	0%



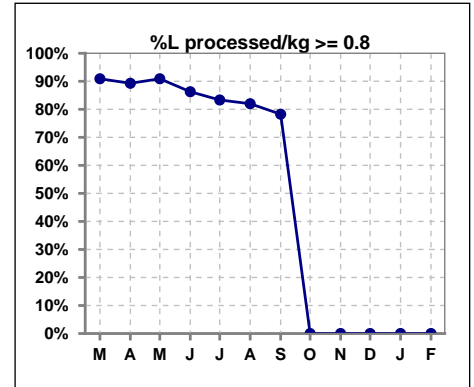
	Mar	Apr	May	Jun	Jul	Aug	Sep	Oct	Nov	Dec	Jan	Feb
# URR w/ 3tx/wk	43	43	42	39	37	39	38	0	0	0	0	0
# URR>=65 w/ 3tx/wk	41	42	42	38	36	38	37	0	0	0	0	0
Pop. Mean	76	76	75	74	74	75	75	0	0	0	0	0
Std. Deviation	7.19	5.56	5.17	5.84	5.24	5.76	5.35	0	0	0	0	0
% URR>=65 w/ 3tx/wk	95%	98%	100%	97%	97%	97%	97%	0%	0%	0%	0%	0%



	Mar	Apr	May	Jun	Jul	Aug	Sep	Oct	Nov	Dec	Jan	Feb
# Pre Sys BP	55	56	55	51	48	50	46	0	0	0	0	0
# Pre Sys BP <= 165	50	50	46	46	40	44	40	0	0	0	0	0
Pop. Mean	141	144	143	142	141	141	143	0	0	0	0	0
Std. Deviation	18.0	18.3	19.3	19.5	20.2	22.1	21.1	0	0	0	0	0
%Pre Sys BP <=165	89%	88%	84%	88%	83%	84%	87%	0%	0%	0%	0%	0%



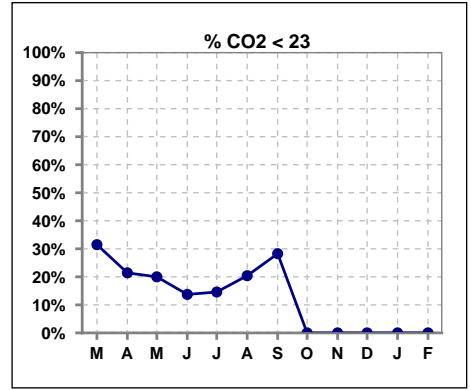
	Mar	Apr	May	Jun	Jul	Aug	Sep	Oct	Nov	Dec	Jan	Feb
# L processed/kg	55	56	55	51	48	50	46	0	0	0	0	0
# L processed/kg>=0.8	50	50	50	44	40	41	36	0	0	0	0	0
Pop. Mean	1	1	1	1	1	1	1	0	0	0	0	0
Std. Deviation	0.3	0.3	0.3	0.3	0.3	0.3	0.3	0	0	0	0	0
% L processed/kg>=0.8	91%	89%	91%	86%	83%	82%	78%	0%	0%	0%	0%	0%



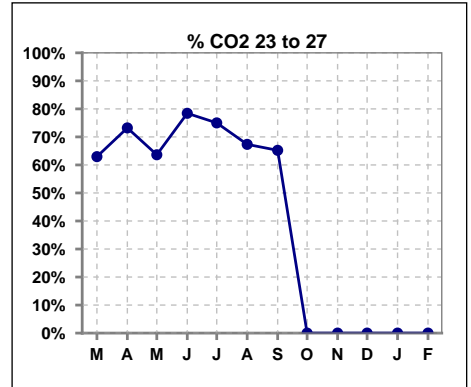
Methodology: a) All labs for 'Adequacy of Dialysis', 'Nutrition', 'Osteodystrophy', 'Anemia' and 'Diabetes' based on last value of month; b) BP's and #L processed are average of all values for month; c) Access data takes last access of month; d) Values for SGA and 'Infection Control' use most recent result.

I. ADEQUACY OF DIALYSIS - CONT.

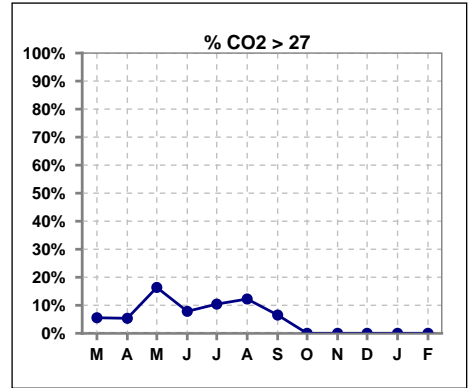
	Mar	Apr	May	Jun	Jul	Aug	Sep	Oct	Nov	Dec	Jan	Feb
# CO2	54	56	55	51	48	49	46	0	0	0	0	0
# CO2 < 23	17	12	11	7	7	10	13	0	0	0	0	0
Pop. Mean	24	24	24	24	25	24	24	0	0	0	0	0
Std. Deviation	2.48	2.53	2.83	2.41	3.13	2.73	2.40	0	0	0	0	0
% CO2 < 23	31%	21%	20%	14%	15%	20%	28%	0%	0%	0%	0%	0%



	Mar	Apr	May	Jun	Jul	Aug	Sep	Oct	Nov	Dec	Jan	Feb
# CO2	54	56	55	51	48	49	46	0	0	0	0	0
# CO2 23 to 27	34	41	35	40	36	33	30	0	0	0	0	0
Pop. Mean	24	24	24	24	25	24	24	0	0	0	0	0
Std. Deviation	2.48	2.53	2.83	2.41	3.13	2.73	2.40	0	0	0	0	0
% CO2 23 to 27	63%	73%	64%	78%	75%	67%	65%	0%	0%	0%	0%	0%



	Mar	Apr	May	Jun	Jul	Aug	Sep	Oct	Nov	Dec	Jan	Feb
# CO2	54	56	55	51	48	49	46	0	0	0	0	0
# CO2 > 27	3	3	9	4	5	6	3	0	0	0	0	0
Pop. Mean	24	24	24	24	25	24	24	0	0	0	0	0
Std. Deviation	2.48	2.53	2.83	2.41	3.13	2.73	2.40	0	0	0	0	0
% CO2 > 27	6%	5%	16%	8%	10%	12%	7%	0%	0%	0%	0%	0%

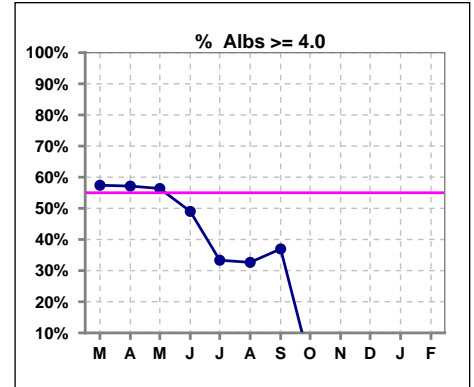


Methodology: a) All labs for 'Adequacy of Dialysis', 'Nutrition', 'Osteodystrophy', 'Anemia' and 'Diabetes' based on last value of month; b) BP's and #L processed are average of all values for month; c) Access data takes last access of month; d) Values for SGA and 'Infection Control' use most recent result.

*Albumin values use BCG method - as of July 2001

II. NUTRITION

	Mar	Apr	May	Jun	Jul	Aug	Sep	Oct	Nov	Dec	Jan	Feb
# Albumin	54	56	55	51	48	49	46	0	0	0	0	0
# Albumin >= 4.0	31	32	31	25	16	16	17	0	0	0	0	0
Pop. Mean	4.0	4.0	4.0	3.8	3.9	3.7	3.7	0	0	0	0	0
Std. Deviation	0.39	0.33	0.35	0.40	0.44	0.51	0.44	0	0	0	0	0
% Alb >= 4.0	57%	57%	56%	49%	33%	33%	37%	0%	0%	0%	0%	0%

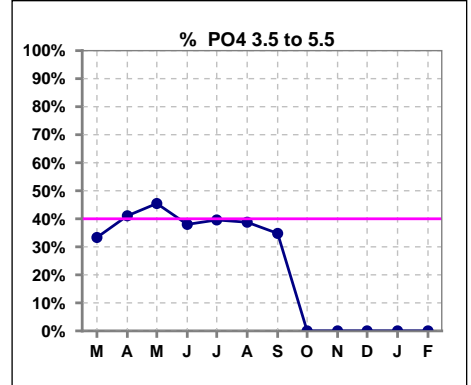


Methodology: a) All labs for 'Adequacy of Dialysis', 'Nutrition', 'Osteodystrophy', 'Anemia' and 'Diabetes' based on last value of month; b) BP's and #L processed are average of all values for month; c) Access data takes last access of month; d) Values for SGA and 'Infection Control' use most recent result.

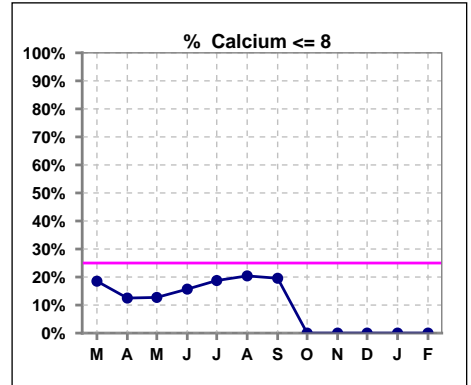
Lab methodology for PTH changed January 2012

III. OSTEODYSTROPHY

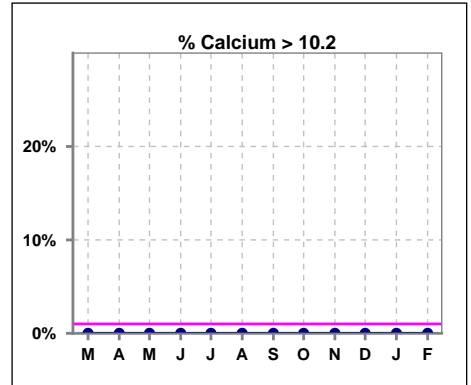
	Mar	Apr	May	Jun	Jul	Aug	Sep	Oct	Nov	Dec	Jan	Feb
# PO4	54	56	55	50	48	49	46	0	0	0	0	0
# PO4 3.5 to 5.5	18	23	25	19	19	19	16	0	0	0	0	0
Pop. Mean	6.3	5.8	5.7	6.0	6.1	6.2	5.6	0	0	0	0	0
Std. Deviation	2.01	2.18	2.01	2.06	1.94	2.21	1.75	0	0	0	0	0
% PO4 3.5 to 5.5	33%	41%	45%	38%	40%	39%	35%	0%	0%	0%	0%	0%



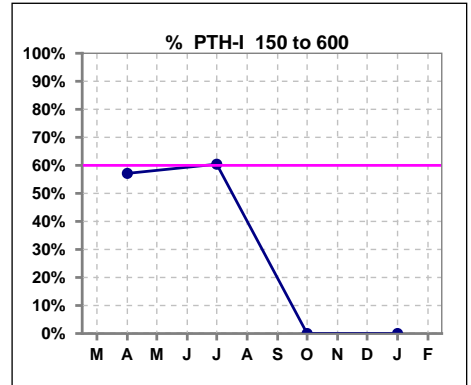
	Mar	Apr	May	Jun	Jul	Aug	Sep	Oct	Nov	Dec	Jan	Feb
# Calcium	54	56	55	51	48	49	46	0	0	0	0	0
# Calcium <= 8	10	7	7	8	9	10	9	0	0	0	0	0
Pop. Mean	8.8	8.9	9.0	8.8	8.7	8.7	8.7	0	0	0	0	0
Std. Deviation	0.74	0.72	0.74	0.81	0.67	0.75	0.75	0	0	0	0	0
% Calcium <= 8	19%	13%	13%	16%	19%	20%	20%	0%	0%	0%	0%	0%



	Mar	Apr	May	Jun	Jul	Aug	Sep	Oct	Nov	Dec	Jan	Feb
# Calcium	54	56	55	51	48	49	46	0	0	0	0	0
# Calcium > 10.2	0	0	0	0	0	0	0	0	0	0	0	0
Pop. Mean	8.8	8.9	9.0	8.8	8.7	8.7	8.7	0	0	0	0	0
Std. Deviation	0.74	0.72	0.74	0.81	0.67	0.75	0.75	0	0	0	0	0
% Calcium > 10.2	0%	0%	0%	0%	0%	0%	0%	0%	0%	0%	0%	0%



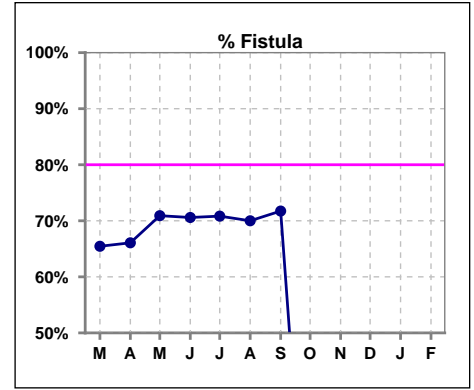
	Mar	Apr	May	Jun	Jul	Aug	Sep	Oct	Nov	Dec	Jan	Feb
# PTH-I		56			48			0			0	
# PTH-I 150 to 600		32			29			0			0	
Pop. Mean		533			548			0			0	
Std. Deviation		284			369			0			0	
% PTH-I 150 to 600		57%			60%			0%			0%	



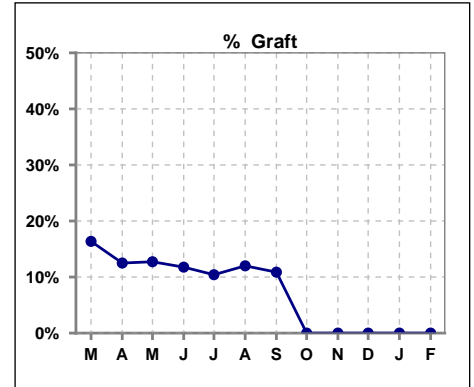
Methodology: a) All labs for 'Adequacy of Dialysis', 'Nutrition', 'Osteodystrophy', 'Anemia' and 'Diabetes' based on last value of month; b) BP's and #L processed are average of all values for month; c) Access data takes last access of month; d) Values for SGA and 'Infection Control' use most recent result.

IV. ACCESS

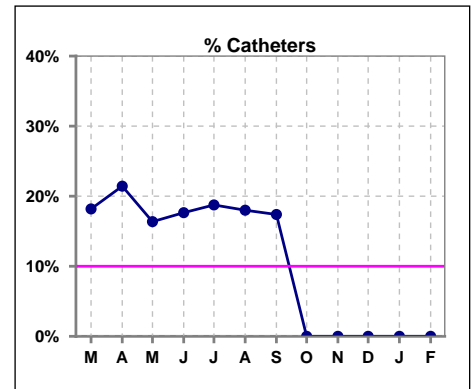
	Mar	Apr	May	Jun	Jul	Aug	Sep	Oct	Nov	Dec	Jan	Feb
# Access	55	56	55	51	48	50	46	0	0	0	0	0
# Fistula	36	37	39	36	34	35	33	0	0	0	0	0
% Fistula	65%	66%	71%	71%	71%	70%	72%	0%	0%	0%	0%	0%



	Mar	Apr	May	Jun	Jul	Aug	Sep	Oct	Nov	Dec	Jan	Feb
# Access	55	56	55	51	48	50	46	0	0	0	0	0
# Graft	9	7	7	6	5	6	5	0	0	0	0	0
% Graft	16%	13%	13%	12%	10%	12%	11%	0%	0%	0%	0%	0%



	Mar	Apr	May	Jun	Jul	Aug	Sep	Oct	Nov	Dec	Jan	Feb
# Access	55	56	55	51	48	50	46	0	0	0	0	0
# Catheters	10	12	9	9	9	9	8	0	0	0	0	0
% Catheters	18%	21%	16%	18%	19%	18%	17%	0%	0%	0%	0%	0%



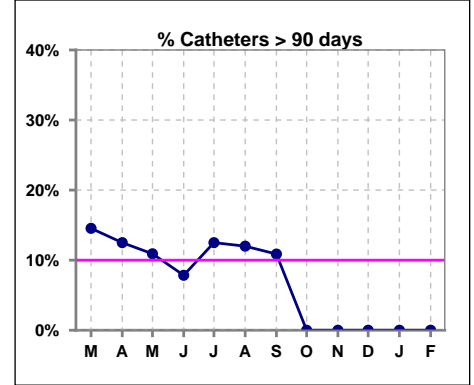
Methodology: a) All labs for 'Adequacy of Dialysis', 'Nutrition', 'Osteodystrophy', 'Anemia' and 'Diabetes' based on last value of month; b) BP's and #L processed are average of all values for month; c) Access data takes last access of month; d) Values for SGA and 'Infection Control' use most recent result.

IV. ACCESS - CONT.

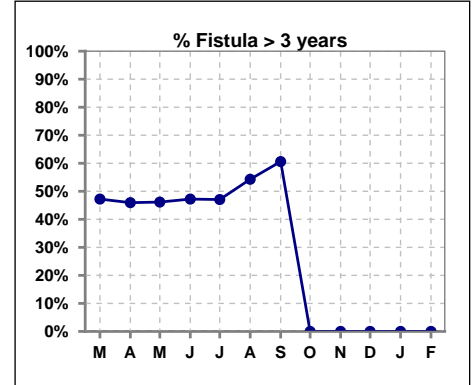
Catheters > 90 days

	Mar	Apr	May	Jun	Jul	Aug	Sep	Oct	Nov	Dec	Jan	Feb
# Access	55	56	55	51	48	50	46	0	0	0	0	0
# Catheters	8	7	6	4	6	6	5	0	0	0	0	0
% Catheters	15%	13%	11%	8%	13%	12%	11%	0%	0%	0%	0%	0%

Definition: Catheter in use on last treatment of the month



	Mar	Apr	May	Jun	Jul	Aug	Sep	Oct	Nov	Dec	Jan	Feb
# Fistula	36	37	39	36	34	35	33	0	0	0	0	0
# Fistula > 3 yrs	17	17	18	17	16	19	20	0	0	0	0	0
% Fistula > 3 yrs	47%	46%	46%	47%	47%	54%	61%	0%	0%	0%	0%	0%

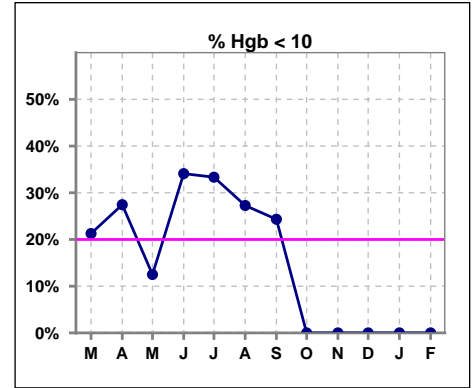


Methodology: a) All labs for 'Adequacy of Dialysis', 'Nutrition', 'Osteodystrophy', 'Anemia' and 'Diabetes' based on last value of month; b) BP's and #L processed are average of all values for month; c) Access data takes last access of month; d) Values for SGA and 'Infection Control' use most recent result.

V. ANEMIA

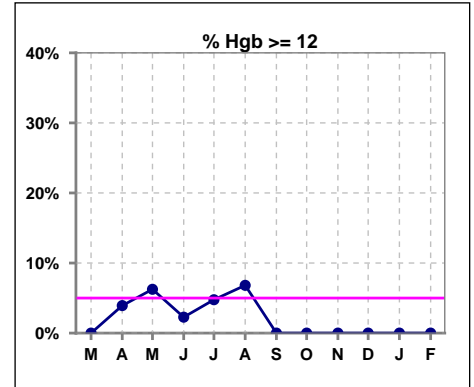
	Mar	Apr	May	Jun	Jul	Aug	Sep	Oct	Nov	Dec	Jan	Feb
# Hgb	47	51	48	44	42	44	37	0	0	0	0	0
# Hgb < 10	10	14	6	15	14	12	9	0	0	0	0	0
Pop. Mean	10.6	10.5	10.7	10.3	10.3	10.3	10.4	0	0	0	0	0
Std. Deviation	1.2	1.3	1.0	1.1	1.3	1.6	1.2	0	0	0	0	0
% Hgb < 10	21%	27%	13%	34%	33%	27%	24%	0%	0%	0%	0%	0%

Note: Excludes patients who received no ESA in month.



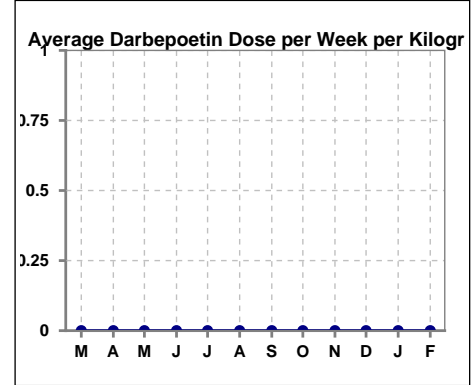
	Mar	Apr	May	Jun	Jul	Aug	Sep	Oct	Nov	Dec	Jan	Feb
# Hgb	47	51	48	44	42	44	37	0	0	0	0	0
# Hgb >= 12	0	2	3	1	2	3	0	0	0	0	0	0
Pop. Mean	10.6	10.5	10.7	10.3	10.3	10.3	10.4	0	0	0	0	0
Std. Deviation	1.2	1.3	1.0	1.1	1.3	1.6	1.2	0	0	0	0	0
% Hgb >= 12	0%	4%	6%	2%	5%	7%	0%	0%	0%	0%	0%	0%

Note: Excludes patients who received no ESA in month.



Average Darbepoetin Dose per Week per Kilogram

	Mar	Apr	May	Jun	Jul	Aug	Sep	Oct	Nov	Dec	Jan	Feb
# Average Darbepoetin	0	0	0	0	0	0	0	0	0	0	0	0

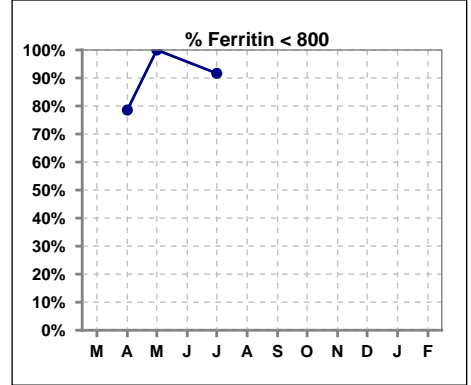


Methodology: a) All labs for 'Adequacy of Dialysis', 'Nutrition', 'Osteodystrophy', 'Anemia' and 'Diabetes' based on last value of month; b) BP's and #L processed are average of all values for month; c) Access data takes last access of month; d) Values for SGA and 'Infection Control' use most recent result.

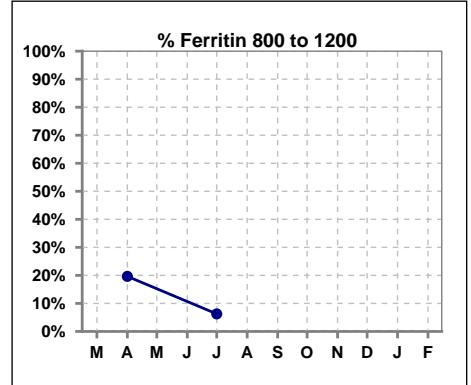
V. ANEMIA - CONT.

Iron Profile

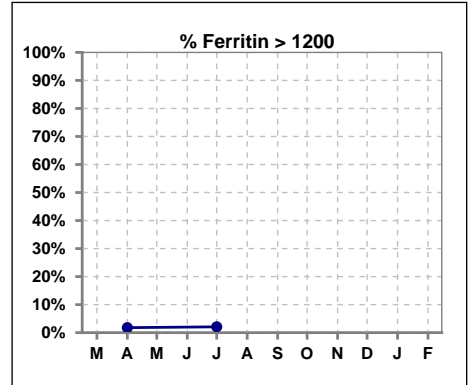
	Mar	Apr	May	Jun	Jul	Aug	Sep	Oct	Nov	Dec	Jan	Feb
# Ferritin		56	1		48							
# Ferritin < 800		44	1		44							
Pop. Mean		532	499		446							
Std. Deviation		315	0		319							
% Ferritin < 800		79%	100%		92%							



	Mar	Apr	May	Jun	Jul	Aug	Sep	Oct	Nov	Dec	Jan	Feb
# Ferritin		56	1		48							
# Ferritin 800 to 1200		11			3							
Pop. Mean		532	499		446							
Std. Deviation		315	0		319							
% Ferritin 800 to 1200		20%			6%							



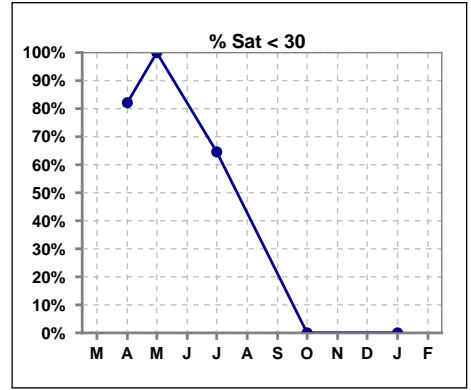
	Mar	Apr	May	Jun	Jul	Aug	Sep	Oct	Nov	Dec	Jan	Feb
# Ferritin		56	1		48							
# Ferritin > 1200		1			1							
Pop. Mean		532	499		446							
Std. Deviation		315	0		319							
% Ferritin > 1200		2%			2%							



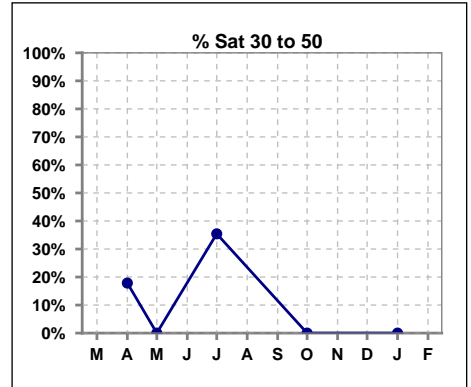
Methodology: a) All labs for 'Adequacy of Dialysis', 'Nutrition', 'Osteodystrophy', 'Anemia' and 'Diabetes' based on last value of month; b) BP's and #L processed are average of all values for month; c) Access data takes last access of month; d) Values for SGA and 'Infection Control' use most recent result.

V. ANEMIA - CONT.

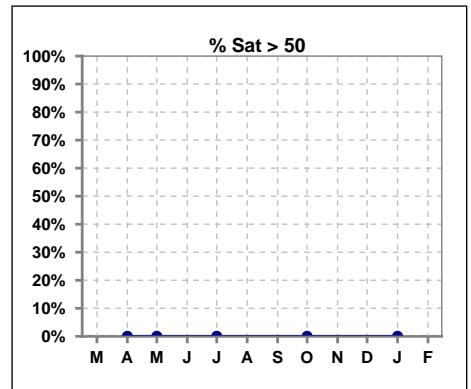
	Mar	Apr	May	Jun	Jul	Aug	Sep	Oct	Nov	Dec	Jan	Feb
# % Sat		56	3		48			0			0	
# % Sat < 30		46	3		31			0			0	
Pop. Mean		23	18		25			0			0	
Std. Deviation		8	4		8			0			0	
% % Sat < 30		82%	100%		65%			0%			0%	



	Mar	Apr	May	Jun	Jul	Aug	Sep	Oct	Nov	Dec	Jan	Feb
# % Sat		56	3		48			0			0	
# % Sat 30 to 50		10	0		17			0			0	
Pop. Mean		23	18		25			0			0	
Std. Deviation		8	4		8			0			0	
% % Sat 30 to 50		18%	0%		35%			0%			0%	

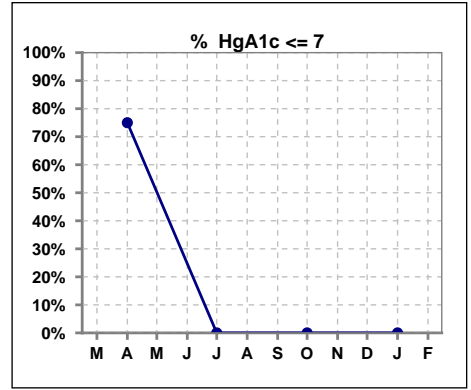


	Mar	Apr	May	Jun	Jul	Aug	Sep	Oct	Nov	Dec	Jan	Feb
# % Sat		56	3		48			0			0	
# % Sat > 50		0	0		0			0			0	
Pop. Mean		23	18		25			0			0	
Std. Deviation		8	4		8			0			0	
% % Sat > 50		0%	0%		0%			0%			0%	



VI. Diabetes

	Mar	Apr	May	Jun	Jul	Aug	Sep	Oct	Nov	Dec	Jan	Feb
# HgA1c		28			0			0			0	
# HgA1c <= 7		21			0			0			0	
Pop. Mean		6.4			0			0			0	
Std. Deviation		1.57			0			0			0	
% HgA1c <= 7		75%			0%			0%			0%	

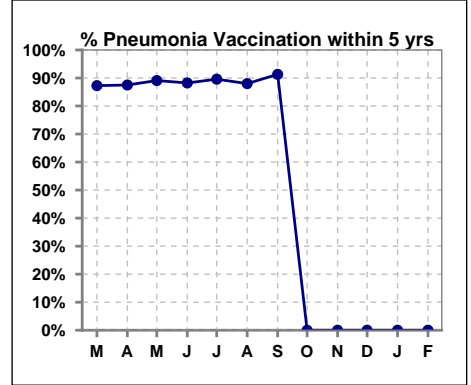


Methodology: a) All labs for 'Adequacy of Dialysis', 'Nutrition', 'Osteodystrophy', 'Anemia' and 'Diabetes' based on last value of month; b) BP's and #L processed are average of all values for month; c) Access data takes last access of month; d) Values for SGA and 'Infection Control' use most recent result.

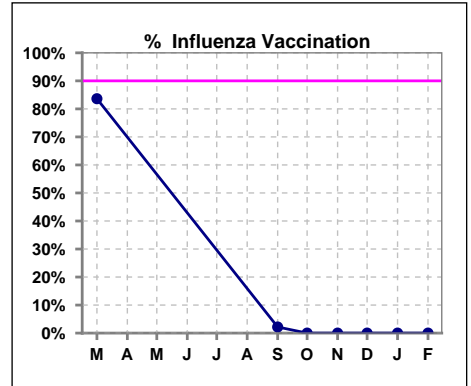
VII. Infection Control

Pneumonia vaccination within the past five years

	Mar	Apr	May	Jun	Jul	Aug	Sep	Oct	Nov	Dec	Jan	Feb
# Patient	55	56	55	51	48	50	46	0	1	0	0	0
# Pneumonia	48	49	49	45	43	44	42	0	0	0	0	0
% Pneumonia	87%	88%	89%	88%	90%	88%	91%	0%	0%	0%	0%	0%



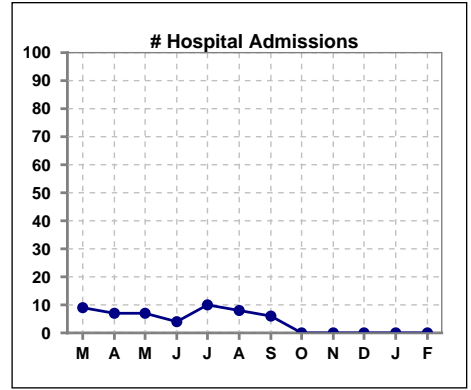
	Mar	Apr	May	Jun	Jul	Aug	Sep	Oct	Nov	Dec	Jan	Feb
# Patient	55						46	0	1	0	0	0
# Influenza	46						1	0	0	0	0	0
% Influenza	84%						2%	0%	0%	0%	0%	0%



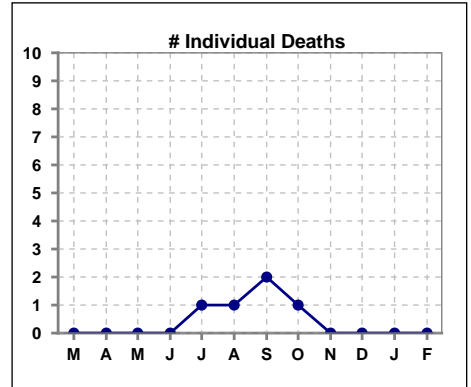
Methodology: a) All labs for 'Adequacy of Dialysis', 'Nutrition', 'Osteodystrophy', 'Anemia' and 'Diabetes' based on last value of month; b) BP's and #L processed are average of all values for month; c) Access data takes last access of month; d) Values for SGA and 'Infection Control' use most recent result.

VIII. Outcome measures

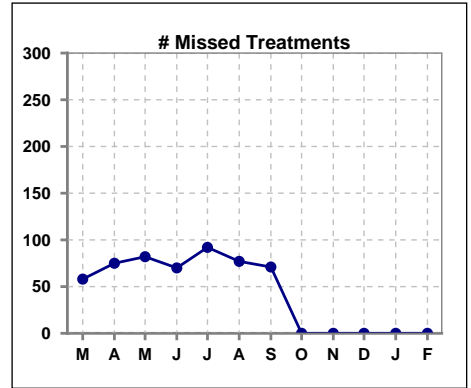
	Mar	Apr	May	Jun	Jul	Aug	Sep	Oct	Nov	Dec	Jan	Feb
# Patient	55	56	55	51	48	50	46	0	1	0	0	0
# Hospital Admissions	9	7	7	4	10	8	6	0	0	0	0	0



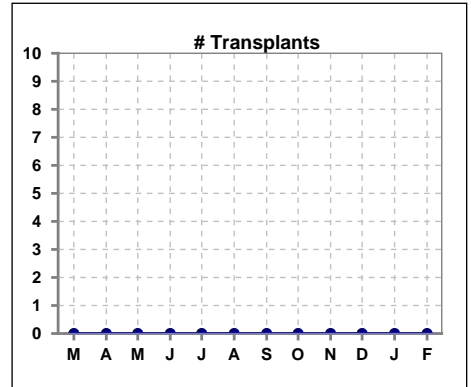
	Mar	Apr	May	Jun	Jul	Aug	Sep	Oct	Nov	Dec	Jan	Feb
# Patient	55	56	55	51	48	50	46	0	1	0	0	0
# Individual Deaths	0	0	0	0	1	1	2	1	0	0	0	0



	Mar	Apr	May	Jun	Jul	Aug	Sep	Oct	Nov	Dec	Jan	Feb
# Patient	55	56	55	51	48	50	46	0	1	0	0	0
# Missed Treatments	58	75	82	70	92	77	71	0	0	0	0	0



	Mar	Apr	May	Jun	Jul	Aug	Sep	Oct	Nov	Dec	Jan	Feb
# Patient	55	56	55	51	48	50	46	0	1	0	0	0
# Transplants	0	0	0	0	0	0	0	0	0	0	0	0



Methodology: a) All labs for 'Adequacy of Dialysis', 'Nutrition', 'Osteodystrophy', 'Anemia' and 'Diabetes' based on last value of month; b) BP's and #L processed are average of all values for month; c) Access data takes last access of month; d) Values for SGA and 'Infection Control' use most recent result.