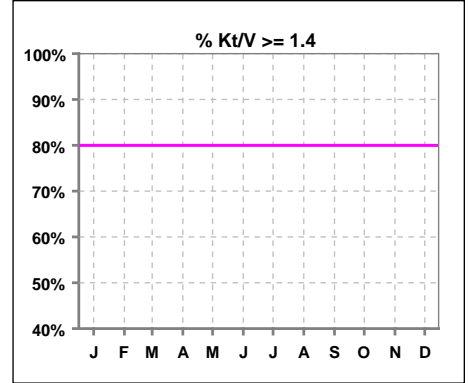


**I. ADEQUACY OF DIALYSIS**

	Jan	Feb	Mar	Apr	May	Jun	Jul	Aug	Sep	Oct	Nov	Dec
# Kt/V			24			33			37			38
# Kt/V >= 1.4			7			6			7			10
Pop. Mean =			1.23			1.20			1.18			1.24
Std. Deviation =			0.36			0.25			0.30			0.42
Network Mean =			1.59			1.59			1.59			1.59
Natl. Mean =												
<b>% Kt/V &gt;= 1.4</b>			29%			18%			19%			26%
**% Kt/V >= 1.2			58%			45%			30%			45%
** As of Apr. '04												

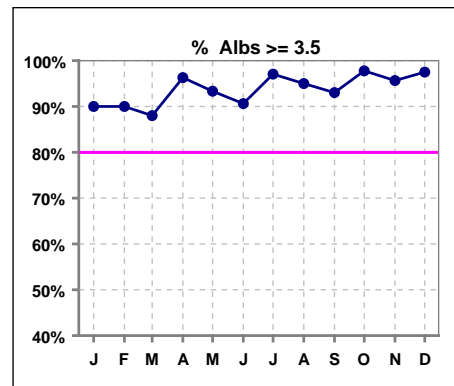


\*Methodology: a) Monthly values based on patient's monthly average of all values present for the month; b) Quarter values are average of all values for quarter; c) Values not averaged use last value present at months end.

\*Albumin values use BCG method - as of July 2001

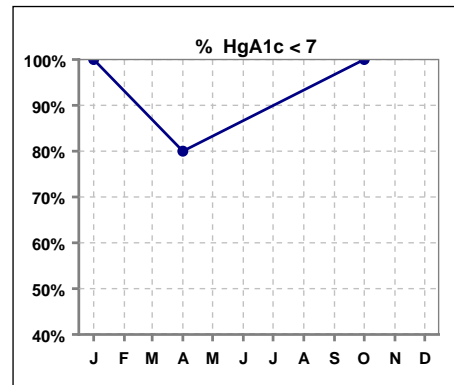
**II. NUTRITION**

	Jan	Feb	Mar	Apr	May	Jun	Jul	Aug	Sep	Oct	Nov	Dec
# Albumin	20	20	25	27	30	32	34	40	43	45	46	40
# Albumin >= 3.5	18	18	22	26	28	29	33	38	40	44	44	39
Pop. Mean =	4.0	3.9	4.0	4.1	4.0	4.0	4.2	4.1	4.1	4.1	4.1	4.1
Std. Deviation =	0.32	0.42	0.48	0.43	0.36	0.35	0.35	0.37	0.37	0.32	0.36	0.35
Network Mean =	3.4	3.4	3.4	3.4	3.4	3.4	3.4	3.4	3.4	3.4	3.4	3.4
Natl. Mean =	3.8	3.8	3.8	3.8	3.8	3.8	3.8	3.8	3.8	3.8	3.8	3.8
<b>% Alb &gt;= 3.5</b>	<b>90%</b>	<b>90%</b>	<b>88%</b>	<b>96%</b>	<b>93%</b>	<b>91%</b>	<b>97%</b>	<b>95%</b>	<b>93%</b>	<b>98%</b>	<b>96%</b>	<b>98%</b>
% Alb >= 3.0						100%	100%	98%	98%	98%	100%	98%
% Alb >= 4.0	60%	55%	64%	67%	63%	66%	76%	78%	81%	76%	65%	68%
*Natl % >= 3.5-BCG	81%	81%	81%	81%	81%	81%	81%	81%	81%	81%	81%	81%
*Natl. % >= 4.0-BCG	39%	39%	39%	39%	39%	39%	39%	39%	39%	39%	39%	39%



\*Figures for 2004

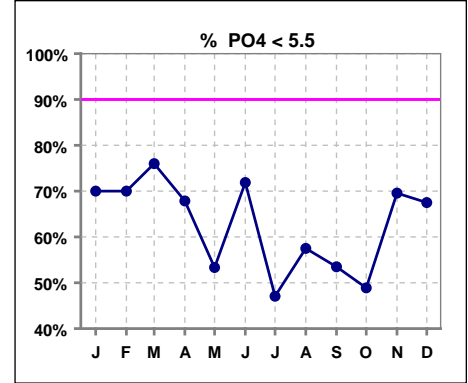
	Jan	Feb	Mar	Apr	May	Jun	Jul	Aug	Sep	Oct	Nov	Dec
# HgA1c	1			5						4		
# HgA1c < 7	1			4						4		
Pop. Mean =	6.1			6.0						5.8		
Std. Deviation =				0.86						0.69		
Network Mean =												
Natl. Mean =												
<b>% HgA1c &lt; 7</b>	<b>100%</b>			<b>80%</b>						<b>100%</b>		



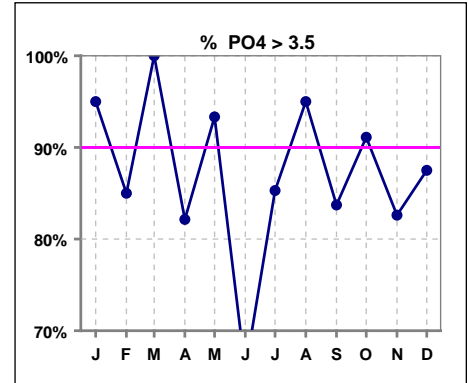
\*Methodology: a) Monthly values based on patient's monthly average of all values present for the month; b) Quarter values are average of all values for quarter; c) Values not averaged use last value present at months end.

**III. OSTEODYSTROPHY**

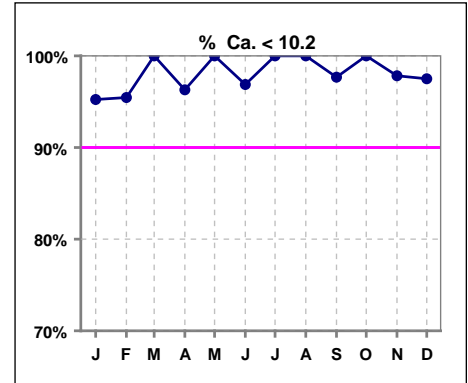
	Jan	Feb	Mar	Apr	May	Jun	Jul	Aug	Sep	Oct	Nov	Dec
# PO4	20	20	25	28	30	32	34	40	43	45	46	40
# PO4 < 5.5	14	14	19	19	16	23	16	23	23	22	32	27
Pop. Mean =	5.2	4.9	5.3	5.2	5.6	4.8	5.7	5.3	5.2	5.6	4.9	5.1
Std. Deviation =	1.31	1.10	1.43	1.40	2.60	1.76	1.94	1.30	1.60	1.54	1.51	1.55
Network Mean =												
Natl. Mean =												
<b>% PO4 &lt; 5.5</b>	<b>70%</b>	<b>70%</b>	<b>76%</b>	<b>68%</b>	<b>53%</b>	<b>72%</b>	<b>47%</b>	<b>58%</b>	<b>53%</b>	<b>49%</b>	<b>70%</b>	<b>68%</b>



	Jan	Feb	Mar	Apr	May	Jun	Jul	Aug	Sep	Oct	Nov	Dec
# PO4	20	20	25	28	30	32	34	40	43	45	46	40
# PO4 > 3.5	19	17	25	23	28	21	29	38	36	41	38	35
Pop. Mean =	5.2	4.9	5.3	5.2	5.6	4.8	5.7	5.3	5.2	5.6	4.9	5.1
Std. Deviation =	1.31	1.10	1.43	1.40	2.60	1.76	1.94	1.30	1.60	1.54	1.51	1.55
Network Mean =												
Natl. Mean =												
<b>% PO4 &gt; 3.5</b>	<b>95%</b>	<b>85%</b>	<b>100%</b>	<b>82%</b>	<b>93%</b>	<b>66%</b>	<b>85%</b>	<b>95%</b>	<b>84%</b>	<b>91%</b>	<b>83%</b>	<b>88%</b>



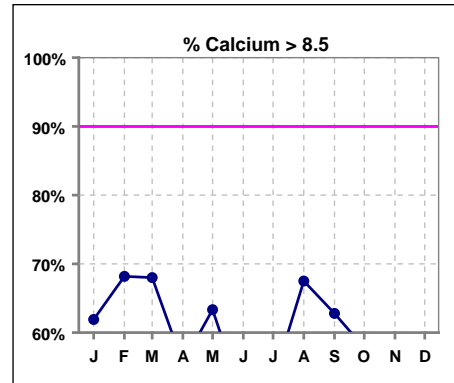
	Jan	Feb	Mar	Apr	May	Jun	Jul	Aug	Sep	Oct	Nov	Dec
# Calcium	21	22	25	27	30	32	34	40	43	45	46	40
# Calcium < 10.2	20	21	25	26	30	31	34	40	42	45	45	39
Pop. Mean =	8.9	9.0	8.7	8.8	8.6	8.6	8.5	8.8	8.6	8.6	8.7	8.6
Std. Deviation =	0.71	0.65	0.68	0.81	0.66	0.84	0.82	0.61	0.82	0.72	0.76	0.82
Network Mean =												
Natl. Mean =												
<b>% Ca &lt; 10.2</b>	<b>95%</b>	<b>95%</b>	<b>100%</b>	<b>96%</b>	<b>100%</b>	<b>97%</b>	<b>100%</b>	<b>100%</b>	<b>98%</b>	<b>100%</b>	<b>98%</b>	<b>98%</b>



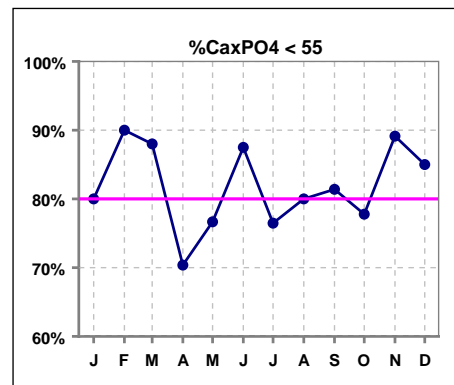
\*Methodology: a) Monthly values based on patient's monthly average of all values present for the month; b) Quarter values are average of all values for quarter; c) Values not averaged use last value present at months end.

**III. OSTEODYSTROPHY - CONT.**

	Jan	Feb	Mar	Apr	May	Jun	Jul	Aug	Sep	Oct	Nov	Dec
# Calcium	21	22	25	27	30	32	34	40	43	45	46	40
# Calcium > 8.5	13	15	17	15	19	16	18	27	27	26	26	21
Pop. Mean =	8.9	9.0	8.7	8.8	8.6	8.6	8.5	8.8	8.6	8.6	8.7	8.6
Std. Deviation =	0.71	0.65	0.68	0.81	0.66	0.84	0.82	0.61	0.82	0.72	0.76	0.82
Network Mean =												
Natl. Mean =												
<b>% Calcium &gt; 8.5</b>	<b>62%</b>	<b>68%</b>	<b>68%</b>	<b>56%</b>	<b>63%</b>	<b>50%</b>	<b>53%</b>	<b>68%</b>	<b>63%</b>	<b>58%</b>	<b>57%</b>	<b>53%</b>



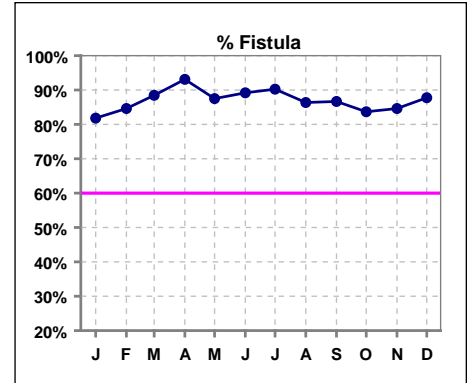
	Jan	Feb	Mar	Apr	May	Jun	Jul	Aug	Sep	Oct	Nov	Dec
# Ca x PO4	20	20	25	27	30	32	34	40	43	45	46	40
# Ca x PO4 < 55	16	18	22	19	23	28	26	32	35	35	41	34
Pop. Mean =	45.0	44.0	46.3	45.5	46.1	41.0	48.2	46.6	44.6	47.7	42.7	43.7
Std. Deviation =	13.3	11.0	13.8	15.1	13.8	13.7	15.5	11.3	13.9	13.0	13.7	12.1
Network Mean =												
Natl. Mean =												
<b>% CaxPO4 &lt; 55</b>	<b>80%</b>	<b>90%</b>	<b>88%</b>	<b>70%</b>	<b>77%</b>	<b>88%</b>	<b>76%</b>	<b>80%</b>	<b>81%</b>	<b>78%</b>	<b>89%</b>	<b>85%</b>



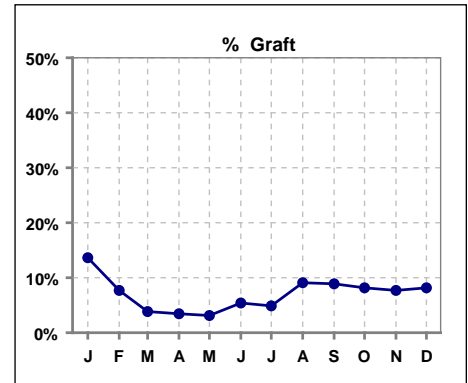
\*Methodology: a) Monthly values based on patient's monthly average of all values present for the month; b) Quarter values are average of all values for quarter; c) Values not averaged use last value present at months end.

**IV. ACCESS**

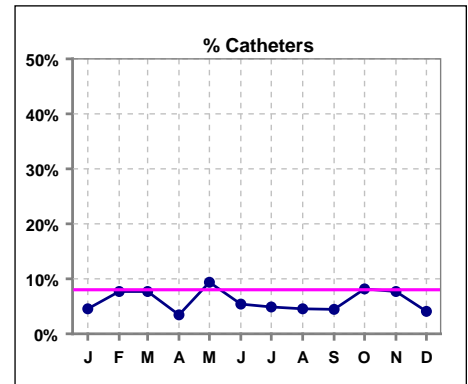
	Jan	Feb	Mar	Apr	May	Jun	Jul	Aug	Sep	Oct	Nov	Dec
# Access	22	26	26	29	32	37	41	44	45	49	52	49
# Fistula	18	22	23	27	28	33	37	38	39	41	44	43
Network % - 2004	55%	55%	55%									
Natl. % - 2004	35%	35%	35%									
Network % - 2005				58%	58%	58%	58%	58%	58%	58%	58%	58%
Natl. % - 2005				39%	39%	39%	39%	39%	39%	39%	39%	39%
<b>% Fistula</b>	<b>82%</b>	<b>85%</b>	<b>88%</b>	<b>93%</b>	<b>88%</b>	<b>89%</b>	<b>90%</b>	<b>86%</b>	<b>87%</b>	<b>84%</b>	<b>85%</b>	<b>88%</b>



	Jan	Feb	Mar	Apr	May	Jun	Jul	Aug	Sep	Oct	Nov	Dec
# Access	22	26	26	29	32	37	41	44	45	49	52	49
# Graft	3	2	1	1	1	2	2	4	4	4	4	4
Network %												
Natl. %												
<b>% Graft</b>	<b>14%</b>	<b>8%</b>	<b>4%</b>	<b>3%</b>	<b>3%</b>	<b>5%</b>	<b>5%</b>	<b>9%</b>	<b>9%</b>	<b>8%</b>	<b>8%</b>	<b>8%</b>



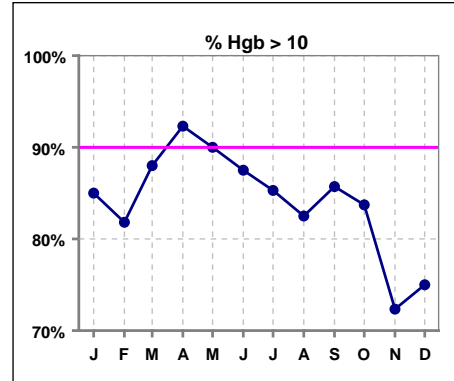
	Jan	Feb	Mar	Apr	May	Jun	Jul	Aug	Sep	Oct	Nov	Dec
# Access	22	26	26	29	32	37	41	44	45	49	52	49
# Catheters	1	2	2	1	3	2	2	2	2	4	4	2
Network %												
Natl. % - 2004	27%	27%	27%	27%	27%	27%	27%	27%	27%	27%	27%	27%
<b>% Catheters</b>	<b>5%</b>	<b>8%</b>	<b>8%</b>	<b>3%</b>	<b>9%</b>	<b>5%</b>	<b>5%</b>	<b>5%</b>	<b>4%</b>	<b>8%</b>	<b>8%</b>	<b>4%</b>



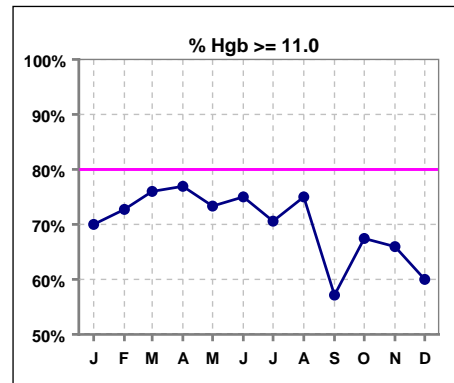
\*Methodology: a) Monthly values based on patient's monthly average of all values present for the month; b) Quarter values are average of all values for quarter; c) Values not averaged use last value present at months end.

**V. ANEMIA**

	Jan	Feb	Mar	Apr	May	Jun	Jul	Aug	Sep	Oct	Nov	Dec
# Hgb	20	22	25	26	30	32	34	40	42	43	47	40
# Hgb > 10.0	17	18	22	24	27	28	29	33	36	36	34	30
Pop. Mean =	11.4	11.6	11.9	12.2	12.2	12.3	12.0	11.7	11.3	11.5	11.1	11.3
Std. Deviation =	2.0	1.9	1.7	1.5	1.6	2.0	2.1	1.9	1.4	1.5	1.9	1.6
Network Mean =	11.8	11.8	11.8	11.8	11.8	11.8	11.8	11.8	11.8	11.8	11.8	11.8
Natl. Mean =												
<b>% Hgb &gt; 10.0</b>	<b>85%</b>	<b>82%</b>	<b>88%</b>	<b>92%</b>	<b>90%</b>	<b>88%</b>	<b>85%</b>	<b>83%</b>	<b>86%</b>	<b>84%</b>	<b>72%</b>	<b>75%</b>



	Jan	Feb	Mar	Apr	May	Jun	Jul	Aug	Sep	Oct	Nov	Dec
# Hgb	20	22	25	26	30	32	34	40	42	43	47	40
# Hgb >= 11.0	14	16	19	20	22	24	24	30	24	29	31	24
Pop. Mean =	11.4	11.6	11.9	12.2	12.2	12.3	12.0	11.7	11.3	11.5	11.1	11.3
Std. Deviation =	2.0	1.9	1.7	1.5	1.6	2.0	2.1	1.9	1.4	1.5	1.9	1.6
Network Mean =	11.8	11.8	11.8	11.8	11.8	11.8	11.8	11.8	11.8	11.8	11.8	11.8
Natl. Mean =												
<b>% Hgb &gt;= 11.0</b>	<b>70%</b>	<b>73%</b>	<b>76%</b>	<b>77%</b>	<b>73%</b>	<b>75%</b>	<b>71%</b>	<b>75%</b>	<b>57%</b>	<b>67%</b>	<b>66%</b>	<b>60%</b>
<b>% Hgb &lt;= 11.0</b>						<b>25%</b>	<b>29%</b>	<b>28%</b>	<b>43%</b>	<b>35%</b>	<b>38%</b>	<b>45%</b>
<b>% Natl. &gt;= 11 2004</b>	<b>80%</b>	<b>80%</b>	<b>80%</b>	<b>80%</b>	<b>80%</b>	<b>80%</b>	<b>80%</b>	<b>80%</b>	<b>80%</b>	<b>80%</b>	<b>80%</b>	<b>80%</b>

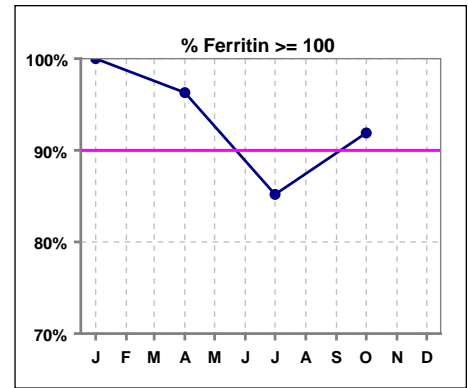


\*Methodology: a) Monthly values based on patient's monthly average of all values present for the month; b) Quarter values are average of all values for quarter; c) Values not averaged use last value present at months end.

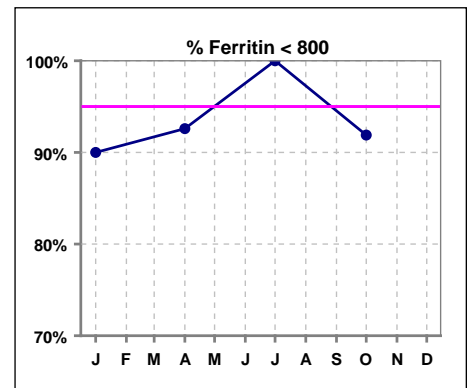
**V. ANEMIA - CONT.**

**Iron Profile**

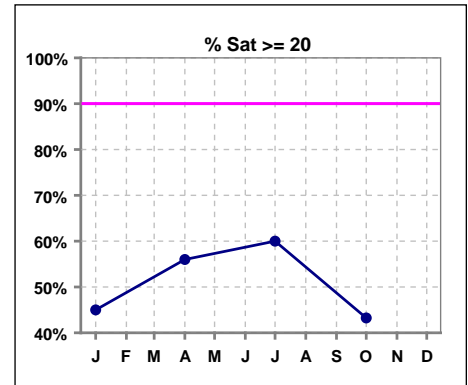
	Jan	Feb	Mar	Apr	May	Jun	Jul	Aug	Sep	Oct	Nov	Dec
# Ferritin	20			27			27			37		
# Ferritin >= 100	20			26			23			34		
Pop. Mean =	473			422			330			416		
Std. Deviation =	297			229			141			234		
Network Mean =												
Natl. Mean =												
<b>% Ferritin &gt;= 100</b>	100%			96%			85%			92%		
<b>%Natl. &gt;=100 2004</b>	94%			94%			94%			94%		



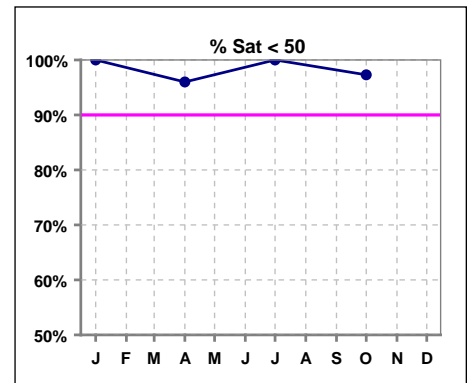
	Jan	Feb	Mar	Apr	May	Jun	Jul	Aug	Sep	Oct	Nov	Dec
# Ferritin	20			27			27			37		
# Ferritin < 800	18			25			27			34		
Pop. Mean =	473			422			330			416		
Std. Deviation =	297			229			141			234		
Network Mean =												
Natl. Mean =												
<b>% Ferritin &lt; 800</b>	90%			93%			100%			92%		



	Jan	Feb	Mar	Apr	May	Jun	Jul	Aug	Sep	Oct	Nov	Dec
# % Sat	20			25			25			37		
# % Sat >= 20	9			14			15			16		
Pop. Mean =	19			24			25			21		
Std. Deviation =	10			13			11			11		
Network Mean =												
Natl. Mean =												
<b>% Sat% &gt;= 20</b>	45%			56%			60%			43%		
<b>%Natl. &gt;=20 2004</b>	81%			81%			81%			81%		



	Jan	Feb	Mar	Apr	May	Jun	Jul	Aug	Sep	Oct	Nov	Dec
# % Sat	20			25			25			37		
# % Sat < 50	20			24			25			36		
Pop. Mean =	19			24			25			21		
Std. Deviation =	10			13			11			11		
Network Mean =												
Natl. Mean =												
<b>% Sat% &lt; 50</b>	100%			96%			100%			97%		



\*Methodology: a) Monthly values based on patient's monthly average of all values present for the month; b) Quarter values are average of all values for quarter; c) Values not averaged use last value present at months end.