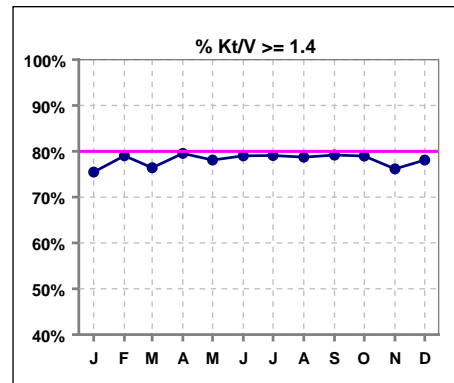


I. ADEQUACY OF DIALYSIS

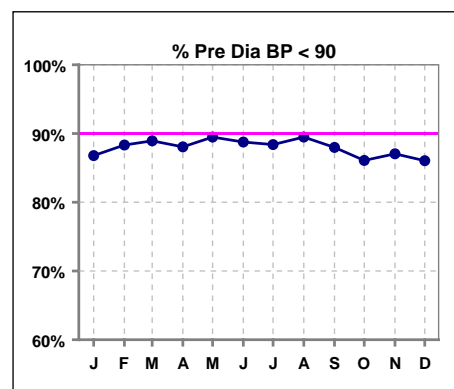
	Jan	Feb	Mar	Apr	May	Jun	Jul	Aug	Sep	Oct	Nov	Dec
# Kt/V	978	987	996	992	1018	1010	1023	1015	1018	1027	1015	1027
# Kt/V >= 1.4	738	780	761	789	795	798	809	799	806	811	773	802
Pop. Mean =	1.58	1.63	1.59	1.64	1.63	1.62	1.62	1.63	1.64	1.63	1.59	1.62
Std. Deviation =	0.31	0.37	0.37	0.36	0.43	0.40	0.39	0.35	0.32	0.39	0.32	0.33
Network Mean =	1.59	1.59	1.59	1.59	1.59	1.59	1.59	1.59	1.59	1.59	1.59	1.59
Natl. Mean =												
% Kt/V >= 1.4	75%	79%	76%	80%	78%	79%	79%	79%	79%	79%	76%	78%
**% Kt/V >= 1.2	91%	91%	90%	91%	91%	92%	92%	92%	95%	92%	91%	92%

** As of Apr. '04

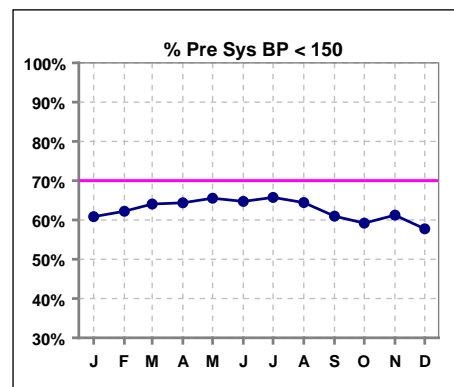


Blood Pressure Control (Pre)

	Jan	Feb	Mar	Apr	May	Jun	Jul	Aug	Sep	Oct	Nov	Dec
# Pre Dia BP	1014	1019	1021	1030	1036	1032	1042	1046	1048	1049	1042	1046
# Pre Dia BP < 90	880	900	908	907	927	916	921	936	922	903	907	900
Pop. Mean =	75	75	74	74	73	74	74	74	75	75	75	75
Std. Deviation =	14.0	13.4	13.2	13.1	13.0	12.8	13.3	13.0	13.6	13.4	13.2	13.7
Network Mean =												
Natl. Mean =												
% Pre Dia BP < 90	87%	88%	89%	88%	89%	89%	88%	89%	88%	86%	87%	86%



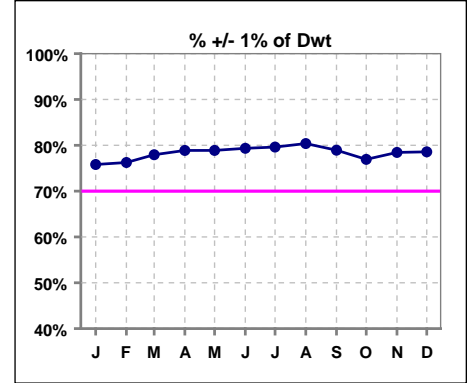
	Jan	Feb	Mar	Apr	May	Jun	Jul	Aug	Sep	Oct	Nov	Dec
# Pre Sys BP	1014	1019	1021	1030	1036	1032	1042	1046	1048	1049	1042	1046
# Pre Sys BP < 150	617	634	654	663	679	668	685	674	639	621	638	604
Pop. Mean =	144	143	143	143	142	142	142	143	144	145	145	145
Std. Deviation =	21.2	21.5	20.8	20.9	21.4	21.5	21.7	21.4	21.4	21.2	21.3	21.6
Network Mean =												
Natl. Mean =												
% Pre Sys BP < 150	61%	62%	64%	64%	66%	65%	66%	64%	61%	59%	61%	58%



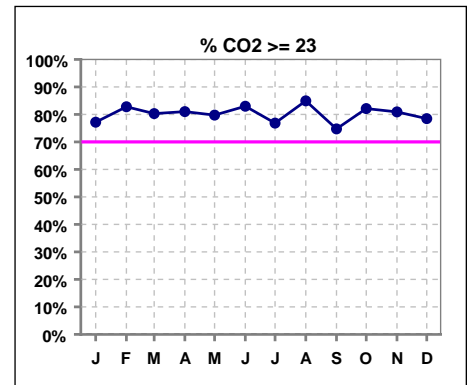
*Methodology: a) Monthly values based on patient's monthly average of all values present for the month; b) Quarter values are average of all values for quarter; c) Values not averaged use last value present at months end.

I. ADEQUACY OF DIALYSIS - CONT.

	Jan	Feb	Mar	Apr	May	Jun	Jul	Aug	Sep	Oct	Nov	Dec
# Post/Dwt	1017	1023	1029	1032	1037	1036	1045	1050	1049	1049	1053	1050
# +/- 1% of Dwt	771	780	802	814	818	822	832	844	828	807	826	825
% +/- 1 % of Dwt	76%	76%	78%	79%	79%	79%	80%	80%	79%	77%	78%	79%



	Jan	Feb	Mar	Apr	May	Jun	Jul	Aug	Sep	Oct	Nov	Dec
# CO2	999	999	1010	1017	1027	1022	1032	1029	1033	1035	1027	1036
# CO2 >= 23	771	827	811	824	819	848	793	874	772	850	831	813
Pop. Mean =	24	25	25	25	25	25	25	25	24	25	25	25
Std. Deviation =	3.13	2.94	2.88	3.12	3.03	2.87	3.23	2.94	3.10	3.18	3.06	3.06
Network Mean =												
Natl. Mean =												
% CO2 >= 23	77%	83%	80%	81%	80%	83%	77%	85%	75%	82%	81%	78%

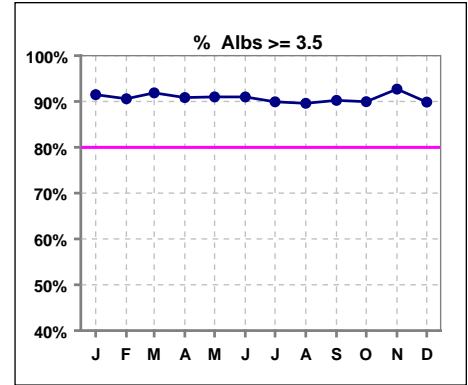


*Methodology: a) Monthly values based on patient's monthly average of all values present for the month; b) Quarter values are average of all values for quarter; c) Values not averaged use last value present at months end.

*Albumin values use BCG method - as of July 2001

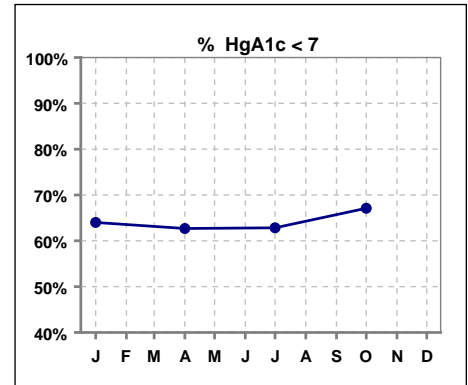
II. NUTRITION

	Jan	Feb	Mar	Apr	May	Jun	Jul	Aug	Sep	Oct	Nov	Dec
# Albumin	999	999	1010	1017	1033	1021	1032	1029	1035	1035	1027	1036
# Albumin >= 3.5	914	905	928	924	940	929	928	922	934	931	952	931
Pop. Mean =	4.0	3.9	4.0	3.9	4.0	4.0	3.9	3.9	3.9	3.9	4.0	3.9
Std. Deviation =	0.39	0.37	0.37	0.38	0.38	0.38	0.36	0.38	0.35	0.37	0.38	0.36
Network Mean =	3.4	3.4	3.4	3.4	3.4	3.4	3.4	3.4	3.4	3.4	3.4	3.4
Natl. Mean =	3.8	3.8	3.8	3.8	3.8	3.8	3.8	3.8	3.8	3.8	3.8	3.8
% Alb >= 3.5	91%	91%	92%	91%	91%	91%	90%	90%	90%	90%	93%	90%
% Alb >= 3.0						98%	99%	98%	98%	98%	99%	99%
% Alb >= 4.0	58%	54%	56%	51%	58%	55%	50%	50%	50%	53%	62%	51%
*Natl % >= 3.5-BCG	81%	81%	81%	81%	81%	81%	81%	81%	81%	81%	81%	81%
*Natl. % >= 4.0-BCG	39%	39%	39%	39%	39%	39%	39%	39%	39%	39%	39%	39%



*Figures for 2004

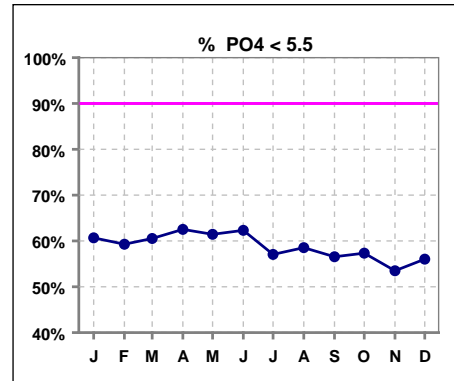
	Jan	Feb	Mar	Apr	May	Jun	Jul	Aug	Sep	Oct	Nov	Dec
# HgA1c	464			469			514			529		
# HgA1c < 7	297			294			323			355		
Pop. Mean =	6.7			6.7			6.6			6.7		
Std. Deviation =	1.56			1.50			1.63			1.62		
Network Mean =												
Natl. Mean =												
% HgA1c < 7	64%			63%			63%			67%		



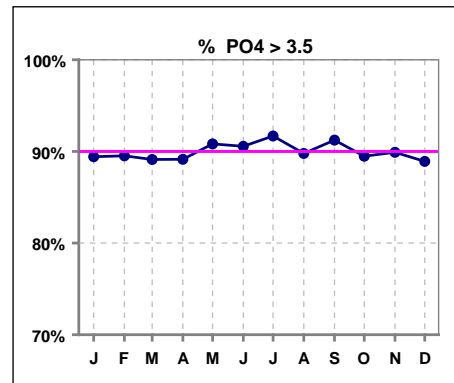
*Methodology: a) Monthly values based on patient's monthly average of all values present for the month; b) Quarter values are average of all values for quarter; c) Values not averaged use last value present at months end.

III. OSTEODYSTROPHY

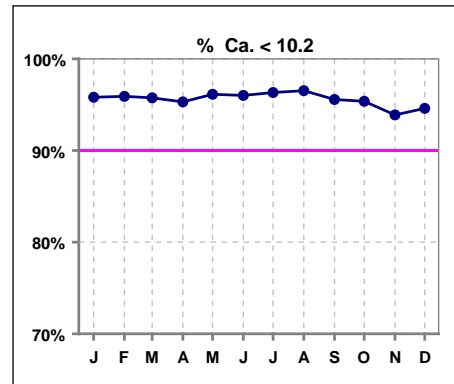
	Jan	Feb	Mar	Apr	May	Jun	Jul	Aug	Sep	Oct	Nov	Dec
# PO4	1002	1002	1011	1022	1035	1027	1034	1037	1038	1036	1030	1037
# PO4 < 5.5	608	594	612	639	636	640	590	607	587	594	551	581
Pop. Mean =	5.3	5.3	5.2	5.2	5.2	5.2	5.4	5.3	5.3	5.3	5.5	5.4
Std. Deviation =	1.57	1.53	1.55	1.46	1.39	1.40	1.53	1.50	1.54	1.55	1.66	1.61
Network Mean =												
Natl. Mean =												
% PO4 < 5.5	61%	59%	61%	63%	61%	62%	57%	59%	57%	57%	53%	56%



	Jan	Feb	Mar	Apr	May	Jun	Jul	Aug	Sep	Oct	Nov	Dec
# PO4	1002	1002	1011	1022	1035	1027	1034	1037	1038	1036	1030	1037
# PO4 > 3.5	896	897	901	911	940	930	948	931	947	927	926	922
Pop. Mean =	5.3	5.3	5.2	5.2	5.2	5.2	5.4	5.3	5.3	5.3	5.5	5.4
Std. Deviation =	1.57	1.53	1.55	1.46	1.39	1.40	1.53	1.50	1.54	1.55	1.66	1.61
Network Mean =												
Natl. Mean =												
% PO4 > 3.5	89%	90%	89%	89%	91%	91%	92%	90%	91%	89%	90%	89%



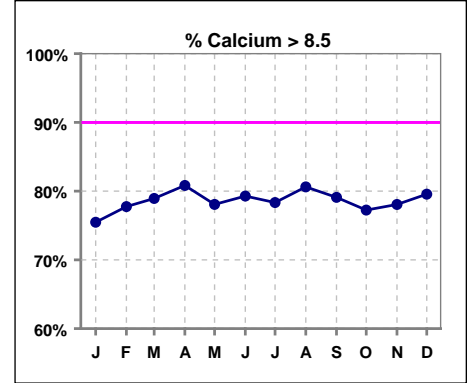
	Jan	Feb	Mar	Apr	May	Jun	Jul	Aug	Sep	Oct	Nov	Dec
# Calcium	1003	1002	1011	1022	1035	1028	1034	1037	1038	1037	1030	1037
# Calcium < 10.2	961	961	968	974	995	987	996	1001	992	989	967	981
Pop. Mean =	9.0	9.0	9.0	9.1	9.0	9.0	9.0	9.0	9.0	9.0	9.1	9.1
Std. Deviation =	0.72	0.69	0.68	0.67	0.67	0.68	0.66	0.68	0.66	0.71	0.74	0.72
Network Mean =												
Natl. Mean =												
% Ca < 10.2	96%	96%	96%	95%	96%	96%	96%	97%	96%	95%	94%	95%



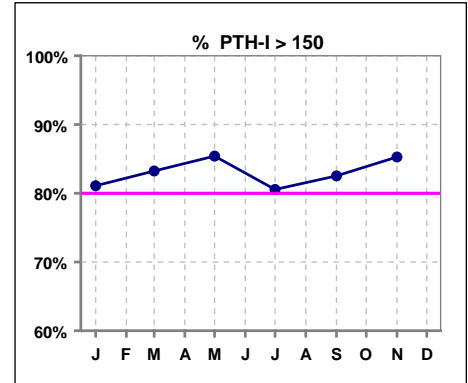
*Methodology: a) Monthly values based on patient's monthly average of all values present for the month; b) Quarter values are average of all values for quarter; c) Values not averaged use last value present at months end.

III. OSTEODYSTROPHY - CONT.

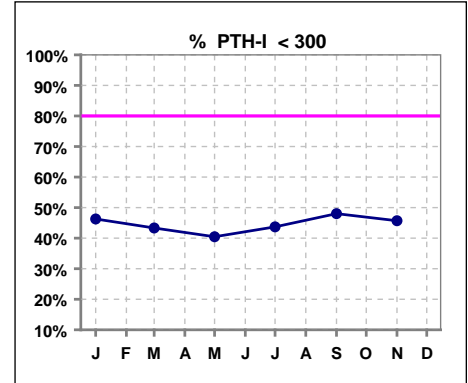
	Jan	Feb	Mar	Apr	May	Jun	Jul	Aug	Sep	Oct	Nov	Dec
# Calcium	1003	1002	1011	1022	1035	1028	1034	1037	1038	1037	1030	1037
# Calcium > 8.5	757	779	798	826	808	815	810	836	821	801	804	825
Pop. Mean =	9.0	9.0	9.0	9.1	9.0	9.0	9.0	9.0	9.0	9.0	9.1	9.1
Std. Deviation =	0.72	0.69	0.68	0.67	0.67	0.68	0.66	0.68	0.66	0.71	0.74	0.72
Network Mean =												
Natl. Mean =												
% Calcium > 8.5	75%	78%	79%	81%	78%	79%	78%	81%	79%	77%	78%	80%



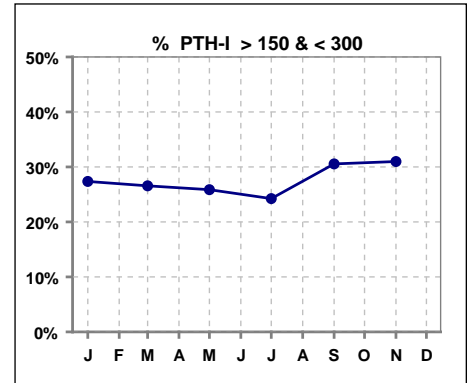
	Jan	Feb	Mar	Apr	May	Jun	Jul	Aug	Sep	Oct	Nov	Dec
# PTH-I	994		847		870		1023		887		326	
# PTH-I > 150	806		705		743		824		732		278	
Pop. Mean =	434		451		473		482		440		448	
Std. Deviation =	438		408		444		515		450		449	
Network Mean =												
Natl. Mean =												
% PTH-I > 150	81%		83%		85%		81%		83%		85%	



	Jan	Feb	Mar	Apr	May	Jun	Jul	Aug	Sep	Oct	Nov	Dec
# PTH-I	994		847		870		1023		887		326	
# PTH-I < 300	460		367		352		447		426		149	
Pop. Mean =	434		451		473		482		440		448	
Std. Deviation =	438		408		444		515		450		449	
Network Mean =												
Natl. Mean =												
% PTH-I < 300	46%		43%		40%		44%		48%		46%	



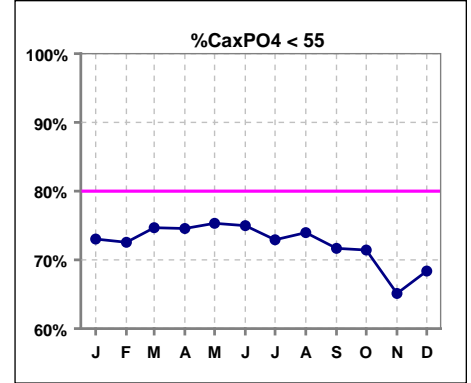
	Jan	Feb	Mar	Apr	May	Jun	Jul	Aug	Sep	Oct	Nov	Dec
# PTH-I	994		847		870		1023		887		326	
# PTH-I > 150 & < 300	272		225		225		248		271		101	
Pop. Mean =	434		451		473		482		440		448	
Std. Deviation =	438		408		444		515		450		449	
Network Mean =												
Natl. Mean =												
% PTH-I > 150 & < 300	27%		27%		26%		24%		31%		31%	



*Methodology: a) Monthly values based on patient's monthly average of all values present for the month; b) Quarter values are average of all values for quarter; c) Values not averaged use last value present at months end.

III. OSTEODYSTROPHY - CONT.

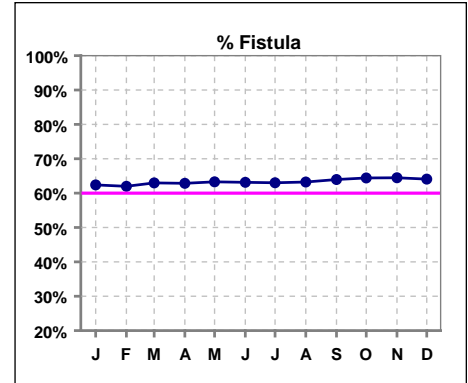
	Jan	Feb	Mar	Apr	May	Jun	Jul	Aug	Sep	Oct	Nov	Dec
# Ca x PO4	1001	1002	1011	1022	1029	1027	1034	1037	1038	1036	1029	1037
# Ca x PO4 < 55	731	727	755	762	775	770	754	767	744	740	670	709
Pop. Mean =	48.1	47.9	47.4	47.6	47.4	47.4	48.5	48.1	48.7	48.3	49.9	49.1
Std. Deviation =	14.2	13.9	14.1	13.8	13.0	12.9	13.8	13.9	14.3	14.6	15.2	14.8
Network Mean =												
Natl. Mean =												
% CaxPO4 < 55	73%	73%	75%	75%	75%	75%	73%	74%	72%	71%	65%	68%



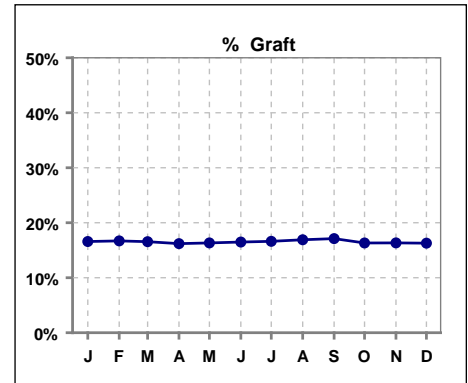
*Methodology: a) Monthly values based on patient's monthly average of all values present for the month; b) Quarter values are average of all values for quarter; c) Values not averaged use last value present at months end.

IV. ACCESS

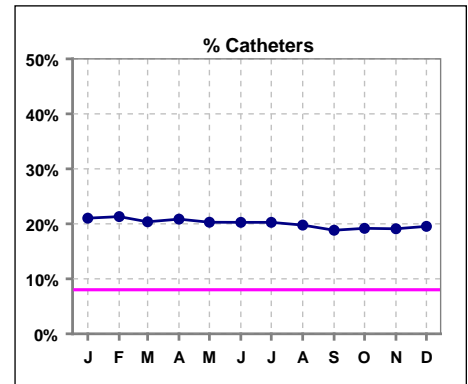
	Jan	Feb	Mar	Apr	May	Jun	Jul	Aug	Sep	Oct	Nov	Dec
# Access	1013	1018	1021	1031	1035	1031	1041	1047	1046	1048	1047	1044
# Fistula	632	631	643	648	655	651	656	662	669	675	675	669
Network % - 2004	55%	55%	55%									
Natl. % - 2004	35%	35%	35%									
Network % - 2005				58%	58%	58%	58%	58%	58%	58%	58%	58%
Natl. % - 2005				39%	39%	39%	39%	39%	39%	39%	39%	39%
% Fistula	62%	62%	63%	63%	63%	63%	63%	63%	64%	64%	64%	64%



	Jan	Feb	Mar	Apr	May	Jun	Jul	Aug	Sep	Oct	Nov	Dec
# Access	1013	1018	1021	1031	1035	1031	1041	1047	1046	1048	1047	1044
# Graft	168	170	169	167	169	170	173	177	179	171	171	170
Network %												
Natl. %												
% Graft	17%	17%	17%	16%	16%	16%	17%	17%	17%	16%	16%	16%



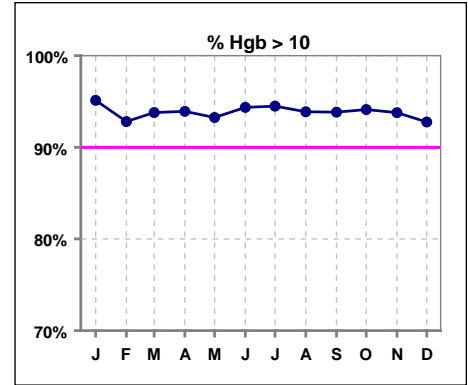
	Jan	Feb	Mar	Apr	May	Jun	Jul	Aug	Sep	Oct	Nov	Dec
# Access	1013	1018	1021	1031	1035	1031	1041	1047	1046	1048	1047	1044
# Catheters	213	217	208	215	210	209	211	207	197	201	200	204
Network %												
Natl. % - 2004	27%	27%	27%	27%	27%	27%	27%	27%	27%	27%	27%	27%
% Catheters	21%	21%	20%	21%	20%	20%	20%	20%	19%	19%	19%	20%



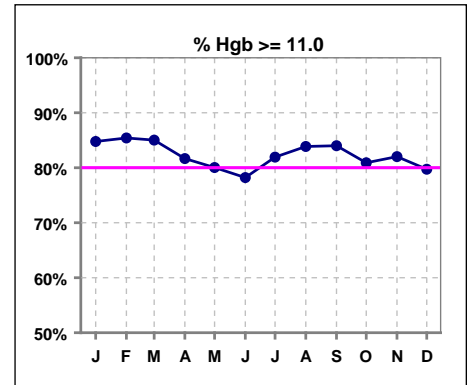
*Methodology: a) Monthly values based on patient's monthly average of all values present for the month; b) Quarter values are average of all values for quarter; c) Values not averaged use last value present at months end.

V. ANEMIA

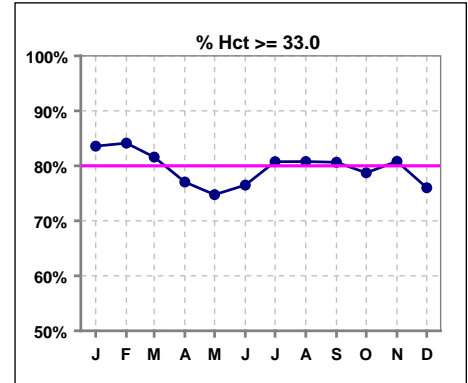
	Jan	Feb	Mar	Apr	May	Jun	Jul	Aug	Sep	Oct	Nov	Dec
# Hgb	1005	1001	1015	1020	1037	1028	1035	1029	1038	1037	1029	1036
# Hgb > 10.0	956	929	952	958	967	970	978	966	974	976	965	961
Pop. Mean =	12.4	12.4	12.3	12.1	12.1	12.0	12.1	12.1	12.1	12.0	12.1	11.9
Std. Deviation =	1.4	1.5	1.4	1.3	1.3	1.4	1.3	1.3	1.3	1.5	1.3	1.3
Network Mean =	11.8	11.8	11.8	11.8	11.8	11.8	11.8	11.8	11.8	11.8	11.8	11.8
Natl. Mean =												
% Hgb > 10.0	95%	93%	94%	94%	93%	94%	94%	94%	94%	94%	94%	93%



	Jan	Feb	Mar	Apr	May	Jun	Jul	Aug	Sep	Oct	Nov	Dec
# Hgb	1005	1001	1015	1020	1037	1028	1035	1029	1038	1037	1029	1036
# Hgb >= 11.0	852	855	863	833	830	804	848	863	872	839	844	826
Pop. Mean =	12.4	12.4	12.3	12.1	12.1	12.0	12.1	12.1	12.1	12.0	12.1	11.9
Std. Deviation =	1.4	1.5	1.4	1.3	1.3	1.4	1.3	1.3	1.3	1.5	1.3	1.3
Network Mean =	11.8	11.8	11.8	11.8	11.8	11.8	11.8	11.8	11.8	11.8	11.8	11.8
Natl. Mean =												
% Hgb >= 11.0	85%	85%	85%	82%	80%	78%	82%	84%	84%	81%	82%	80%
% Hgb <= 11.0						23%	19%	17%	17%	20%	19%	21%
% Natl. >= 11 2004	80%	80%	80%	80%	80%	80%	80%	80%	80%	80%	80%	80%



	Jan	Feb	Mar	Apr	May	Jun	Jul	Aug	Sep	Oct	Nov	Dec
# Hct	1005	1002	1016	1020	1038	1034	1039	1030	1044	1039	1032	1038
# Hct >= 33.0	840	843	829	786	776	791	839	832	842	818	834	789
Pop. Mean =	37	37	37	36	36	36	36	36	36	36	36	35
Std. Deviation =	4.33	4.56	4.19	3.96	4.02	4.10	3.81	3.93	3.90	3.79	4.01	3.79
Network Mean =												
Natl. Mean =												
% Hct >= 33.0	84%	84%	82%	77%	75%	76%	81%	81%	81%	79%	81%	76%
*% Network >= 33	91%	91%	91%									
*% Natl. >= 33	89%	89%	89%									
*Figures for 2004												
**% Network >= 33				94%	94%	94%	94%	94%	94%	94%	94%	94%
**% Natl. >= 33				92%	92%	92%	92%	92%	92%	92%	92%	92%
**Figures for 2005												

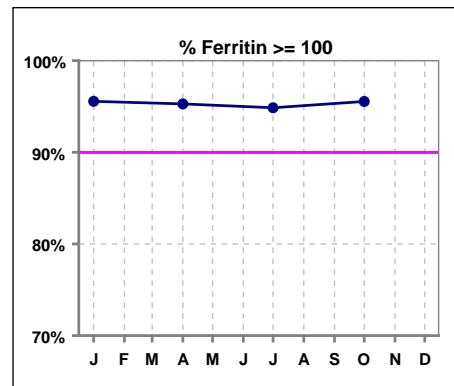


*Methodology: a) Monthly values based on patient's monthly average of all values present for the month; b) Quarter values are average of all values for quarter; c) Values not averaged use last value present at months end.

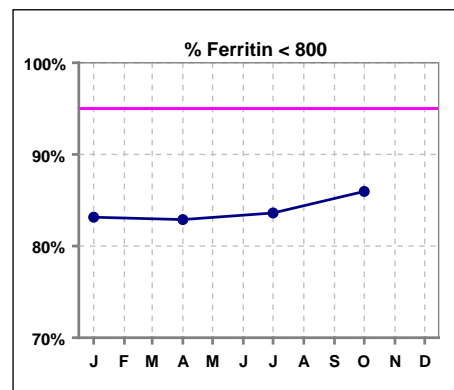
V. ANEMIA - CONT.

Iron Profile

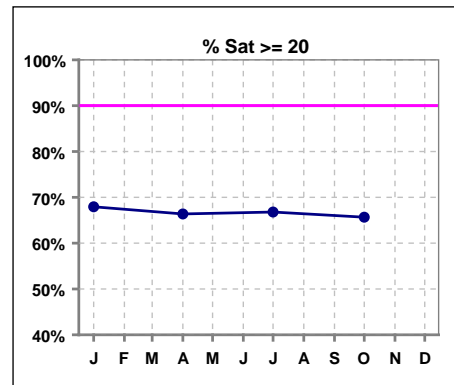
	Jan	Feb	Mar	Apr	May	Jun	Jul	Aug	Sep	Oct	Nov	Dec
# Ferritin	991			1017			1031			1033		
# Ferritin >= 100	947			969			978			987		
Pop. Mean =	546			560			535			528		
Std. Deviation =	384			522			333			378		
Network Mean =												
Natl. Mean =												
% Ferritin >= 100	96%			95%			95%			96%		
%Natl. >=100 2004	94%			94%			94%			94%		



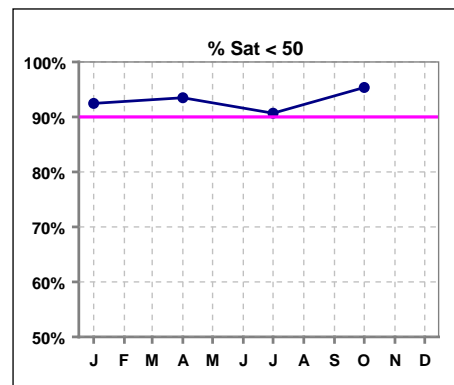
	Jan	Feb	Mar	Apr	May	Jun	Jul	Aug	Sep	Oct	Nov	Dec
# Ferritin	991			1017			1031			1033		
# Ferritin < 800	824			843			862			888		
Pop. Mean =	546			560			535			528		
Std. Deviation =	384			522			333			378		
Network Mean =												
Natl. Mean =												
% Ferritin < 800	83%			83%			84%			86%		



	Jan	Feb	Mar	Apr	May	Jun	Jul	Aug	Sep	Oct	Nov	Dec
# % Sat	995			1014			1030			1034		
# % Sat >= 20	676			673			688			679		
Pop. Mean =	27			27			28			25		
Std. Deviation =	14			15			16			12		
Network Mean =												
Natl. Mean =												
% Sat% >= 20	68%			66%			67%			66%		
%Natl. >=20 2004	81%			81%			81%			81%		



	Jan	Feb	Mar	Apr	May	Jun	Jul	Aug	Sep	Oct	Nov	Dec
# % Sat	995			1014			1030			1034		
# % Sat < 50	920			948			934			986		
Pop. Mean =	27			27			28			25		
Std. Deviation =	14			15			16			12		
Network Mean =												
Natl. Mean =												
% Sat% < 50	92%			93%			91%			95%		



*Methodology: a) Monthly values based on patient's monthly average of all values present for the month; b) Quarter values are average of all values for quarter; c) Values not averaged use last value present at months end.