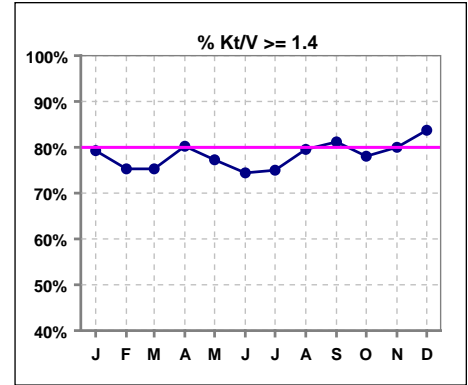


I. ADEQUACY OF DIALYSIS

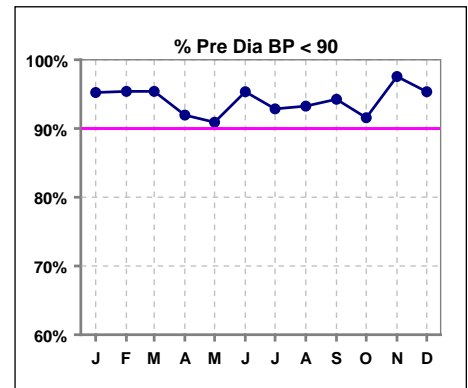
	Jan	Feb	Mar	Apr	May	Jun	Jul	Aug	Sep	Oct	Nov	Dec
# Kt/V	82	85	85	86	88	86	84	88	85	82	80	86
# Kt/V >= 1.4	65	64	64	69	68	64	63	70	69	64	64	72
Pop. Mean =	1.58	1.58	1.56	1.62	1.58	1.59	1.61	1.61	1.65	1.63	1.62	1.61
Std. Deviation =	0.29	0.34	0.29	0.33	0.26	0.33	0.31	0.31	0.29	0.37	0.38	0.26
Network Mean =	1.59	1.59	1.59	1.59	1.59	1.59	1.59	1.59	1.59	1.59	1.59	1.59
Natl. Mean =												
% Kt/V >= 1.4	79%	75%	75%	80%	77%	74%	75%	80%	81%	78%	80%	84%
**% Kt/V >= 1.2	90%	91%	93%	91%	92%	91%	93%	93%	94%	94%	90%	95%

** As of Apr. '04

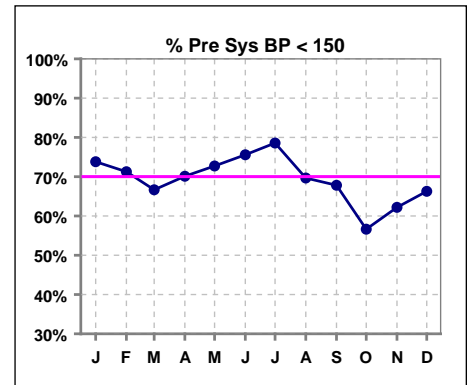


Blood Pressure Control (Pre)

	Jan	Feb	Mar	Apr	May	Jun	Jul	Aug	Sep	Oct	Nov	Dec
# Pre Dia BP	84	87	87	87	88	86	84	89	87	83	82	86
# Pre Dia BP < 90	80	83	83	80	80	82	78	83	82	76	80	82
Pop. Mean =	70	69	69	70	69	68	68	70	69	71	69	70
Std. Deviation =	12.6	13.0	12.3	13.3	13.8	12.7	12.0	12.2	13.5	12.3	11.2	11.6
Network Mean =												
Natl. Mean =												
% Pre Dia BP < 90	95%	95%	95%	92%	91%	95%	93%	93%	94%	92%	98%	95%



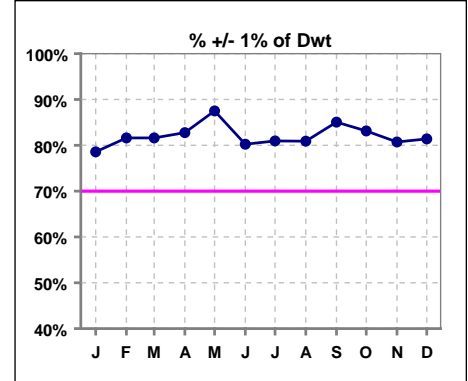
	Jan	Feb	Mar	Apr	May	Jun	Jul	Aug	Sep	Oct	Nov	Dec
# Pre Sys BP	84	87	87	87	88	86	84	89	87	83	82	86
# Pre Sys BP < 150	62	62	58	61	64	65	66	62	59	47	51	57
Pop. Mean =	142	140	141	140	140	139	138	142	143	146	143	142
Std. Deviation =	22.1	22.1	21.9	21.8	23.2	24.9	23.6	23.5	23.4	22.0	22.7	21.4
Network Mean =												
Natl. Mean =												
% Pre Sys BP < 150	74%	71%	67%	70%	73%	76%	79%	70%	68%	57%	62%	66%



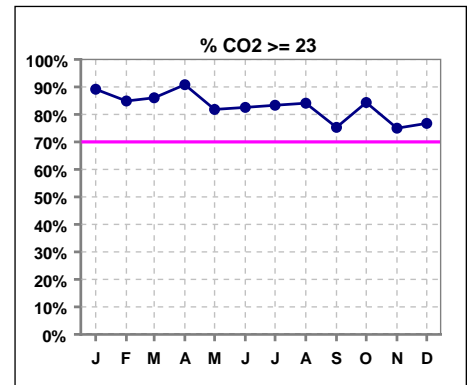
*Methodology: a) Monthly values based on patient's monthly average of all values present for the month; b) Quarter values are average of all values for quarter; c) Values not averaged use last value present at months end.

I. ADEQUACY OF DIALYSIS - CONT.

	Jan	Feb	Mar	Apr	May	Jun	Jul	Aug	Sep	Oct	Nov	Dec
# Post/Dwt	84	87	87	87	88	86	84	89	87	83	83	86
# +/- 1% of Dwt	66	71	71	72	77	69	68	72	74	69	67	70
% +/- 1 % of Dwt	79%	82%	82%	83%	88%	80%	81%	81%	85%	83%	81%	81%



	Jan	Feb	Mar	Apr	May	Jun	Jul	Aug	Sep	Oct	Nov	Dec
# CO2	83	86	86	87	88	86	84	88	85	83	80	86
# CO2 >= 23	74	73	74	79	72	71	70	74	64	70	60	66
Pop. Mean =	25	25	25	25	25	25	26	25	25	26	25	25
Std. Deviation =	2.49	2.40	2.33	2.75	3.17	3.28	3.13	2.74	2.98	3.09	3.13	2.80
Network Mean =												
Natl. Mean =												
% CO2 >= 23	89%	85%	86%	91%	82%	83%	83%	84%	75%	84%	75%	77%

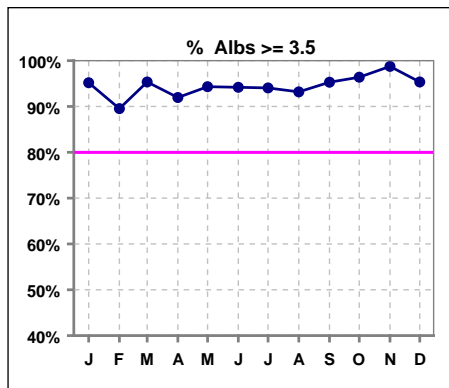


*Methodology: a) Monthly values based on patient's monthly average of all values present for the month; b) Quarter values are average of all values for quarter; c) Values not averaged use last value present at months end.

*Albumin values use BCG method - as of July 2001

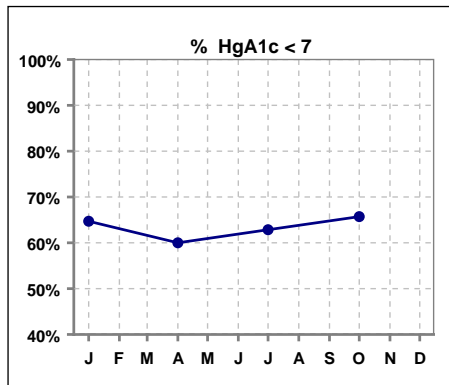
II. NUTRITION

	Jan	Feb	Mar	Apr	May	Jun	Jul	Aug	Sep	Oct	Nov	Dec
# Albumin	83	86	86	87	88	86	84	88	85	83	80	86
# Albumin >= 3.5	79	77	82	80	83	81	79	82	81	80	79	82
Pop. Mean =	4.1	4.0	4.0	4.0	4.0	4.0	3.9	4.0	4.0	4.0	4.1	4.0
Std. Deviation =	0.40	0.45	0.36	0.43	0.37	0.36	0.34	0.37	0.29	0.30	0.31	0.31
Network Mean =	3.4	3.4	3.4	3.4	3.4	3.4	3.4	3.4	3.4	3.4	3.4	3.4
Natl. Mean =	3.8	3.8	3.8	3.8	3.8	3.8	3.8	3.8	3.8	3.8	3.8	3.8
% Alb >= 3.5	95%	90%	95%	92%	94%	94%	94%	93%	95%	96%	99%	95%
% Alb >= 3.0						97%	98%	97%	100%	100%	100%	100%
% Alb >= 4.0	71%	60%	56%	61%	60%	59%	52%	59%	52%	53%	64%	57%
*Natl % >= 3.5-BCG	81%	81%	81%	81%	81%	81%	81%	81%	81%	81%	81%	81%
*Natl. % >= 4.0-BCG	39%	39%	39%	39%	39%	39%	39%	39%	39%	39%	39%	39%



*Figures for 2004

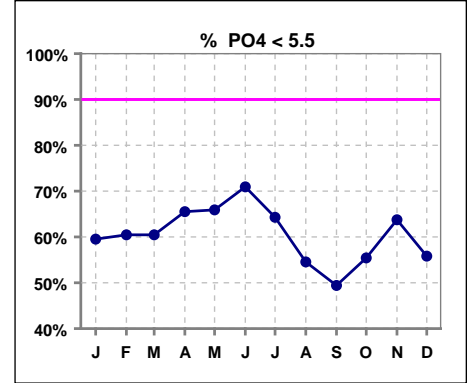
	Jan	Feb	Mar	Apr	May	Jun	Jul	Aug	Sep	Oct	Nov	Dec
# HgA1c	34			35			35			35		
# HgA1c < 7	22			21			22			23		
Pop. Mean =	6.5			6.8			6.4			6.4		
Std. Deviation =	1.80			1.69			1.28			0.98		
Network Mean =												
Natl. Mean =												
% HgA1c < 7	65%			60%			63%			66%		



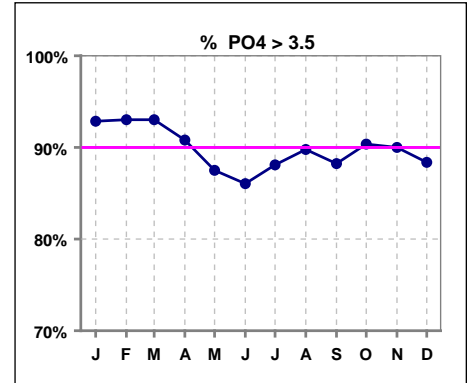
*Methodology: a) Monthly values based on patient's monthly average of all values present for the month; b) Quarter values are average of all values for quarter; c) Values not averaged use last value present at months end.

III. OSTEODYSTROPHY

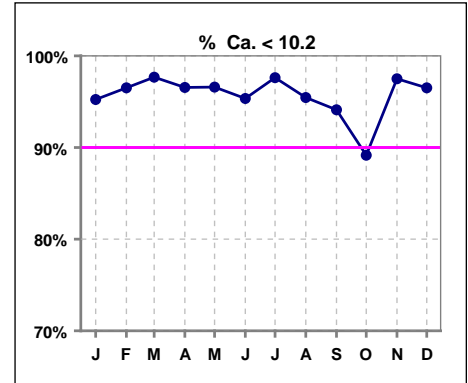
	Jan	Feb	Mar	Apr	May	Jun	Jul	Aug	Sep	Oct	Nov	Dec
# PO4	84	86	86	87	88	86	84	88	85	83	80	86
# PO4 < 5.5	50	52	52	57	58	61	54	48	42	46	51	48
Pop. Mean =	5.1	5.2	5.1	5.3	5.2	5.1	5.2	5.3	5.4	5.3	5.3	5.4
Std. Deviation =	1.28	1.29	1.31	1.46	1.46	1.55	1.58	1.50	1.49	1.44	1.52	1.77
Network Mean =												
Natl. Mean =												
% PO4 < 5.5	60%	60%	60%	66%	66%	71%	64%	55%	49%	55%	64%	56%



	Jan	Feb	Mar	Apr	May	Jun	Jul	Aug	Sep	Oct	Nov	Dec
# PO4	84	86	86	87	88	86	84	88	85	83	80	86
# PO4 > 3.5	78	80	80	79	77	74	74	79	75	75	72	76
Pop. Mean =	5.1	5.2	5.1	5.3	5.2	5.1	5.2	5.3	5.4	5.3	5.3	5.4
Std. Deviation =	1.28	1.29	1.31	1.46	1.46	1.55	1.58	1.50	1.49	1.44	1.52	1.77
Network Mean =												
Natl. Mean =												
% PO4 > 3.5	93%	93%	93%	91%	88%	86%	88%	90%	88%	90%	90%	88%



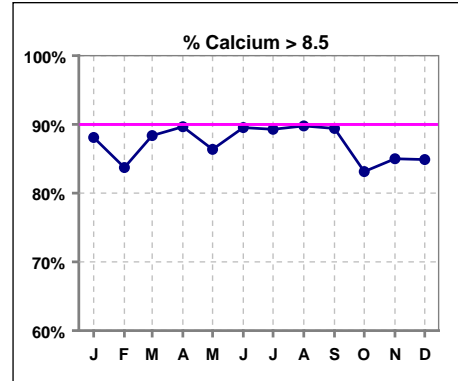
	Jan	Feb	Mar	Apr	May	Jun	Jul	Aug	Sep	Oct	Nov	Dec
# Calcium	84	86	86	87	88	86	84	88	85	83	80	86
# Calcium < 10.2	80	83	84	84	85	82	82	84	80	74	78	83
Pop. Mean =	9.2	9.1	9.1	9.2	9.2	9.2	9.2	9.2	9.2	9.2	9.1	9.2
Std. Deviation =	0.62	0.59	0.56	0.57	0.61	0.57	0.53	0.65	0.60	0.70	0.56	0.61
Network Mean =												
Natl. Mean =												
% Ca < 10.2	95%	97%	98%	97%	97%	95%	98%	95%	94%	89%	98%	97%



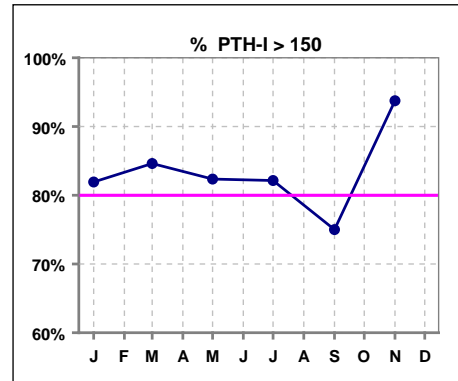
*Methodology: a) Monthly values based on patient's monthly average of all values present for the month; b) Quarter values are average of all values for quarter; c) Values not averaged use last value present at months end.

III. OSTEODYSTROPHY - CONT.

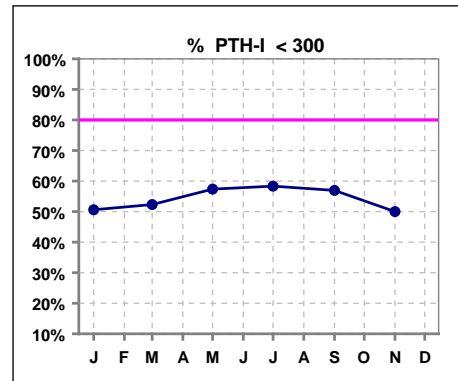
	Jan	Feb	Mar	Apr	May	Jun	Jul	Aug	Sep	Oct	Nov	Dec
# Calcium	84	86	86	87	88	86	84	88	85	83	80	86
# Calcium > 8.5	74	72	76	78	76	77	75	79	76	69	68	73
Pop. Mean =	9.2	9.1	9.1	9.2	9.2	9.2	9.2	9.2	9.2	9.2	9.1	9.2
Std. Deviation =	0.62	0.59	0.56	0.57	0.61	0.57	0.53	0.65	0.60	0.70	0.56	0.61
Network Mean =												
Natl. Mean =												
% Calcium > 8.5	88%	84%	88%	90%	86%	90%	89%	90%	89%	83%	85%	85%



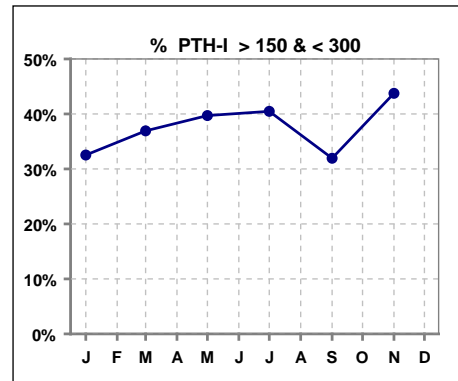
	Jan	Feb	Mar	Apr	May	Jun	Jul	Aug	Sep	Oct	Nov	Dec
# PTH-I	83		65		68		84		72		32	
# PTH-I > 150	68		55		56		69		54		30	
Pop. Mean =	367		341		354		399		331		345	
Std. Deviation =	286		249		335		549		282		141	
Network Mean =												
Natl. Mean =												
% PTH-I > 150	82%		85%		82%		82%		75%		94%	



	Jan	Feb	Mar	Apr	May	Jun	Jul	Aug	Sep	Oct	Nov	Dec
# PTH-I	83		65		68		84		72		32	
# PTH-I < 300	42		34		39		49		41		16	
Pop. Mean =	367		341		354		399		331		345	
Std. Deviation =	286		249		335		549		282		141	
Network Mean =												
Natl. Mean =												
% PTH-I < 300	51%		52%		57%		58%		57%		50%	



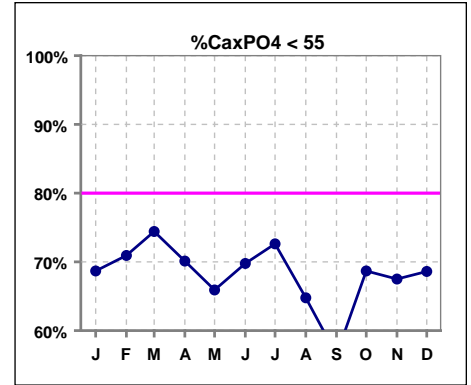
	Jan	Feb	Mar	Apr	May	Jun	Jul	Aug	Sep	Oct	Nov	Dec
# PTH-I	83		65		68		84		72		32	
# PTH-I > 150 & < 300	27		24		27		34		23		14	
Pop. Mean =	367		341		354		399		331		345	
Std. Deviation =	286		249		335		549		282		141	
Network Mean =												
Natl. Mean =												
% PTH-I > 150 & < 300	33%		37%		40%		40%		32%		44%	



*Methodology: a) Monthly values based on patient's monthly average of all values present for the month; b) Quarter values are average of all values for quarter; c) Values not averaged use last value present at months end.

III. OSTEODYSTROPHY - CONT.

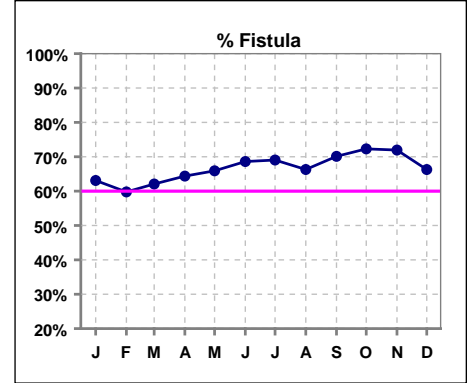
	Jan	Feb	Mar	Apr	May	Jun	Jul	Aug	Sep	Oct	Nov	Dec
# Ca x PO4	83	86	86	87	88	86	84	88	85	83	80	86
# Ca x PO4 < 55	57	61	64	61	58	60	61	57	48	57	54	59
Pop. Mean =	49.0	48.6	48.1	50.0	50.8	48.8	48.8	50.5	52.7	50.2	48.3	51.2
Std. Deviation =	14.7	12.9	14.4	16.4	18.2	16.7	15.8	16.6	17.5	16.6	15.7	18.4
Network Mean =												
Natl. Mean =												
% CaxPO4 < 55	69%	71%	74%	70%	66%	70%	73%	65%	56%	69%	68%	69%



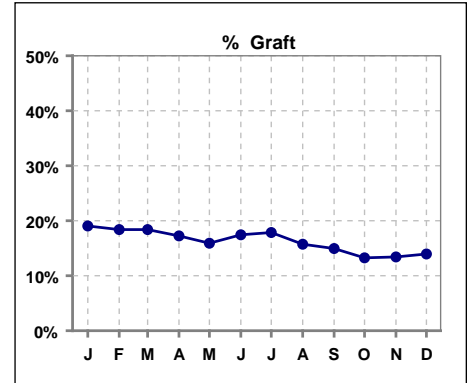
*Methodology: a) Monthly values based on patient's monthly average of all values present for the month; b) Quarter values are average of all values for quarter; c) Values not averaged use last value present at months end.

IV. ACCESS

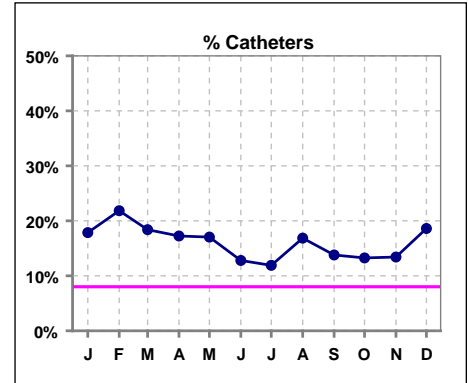
	Jan	Feb	Mar	Apr	May	Jun	Jul	Aug	Sep	Oct	Nov	Dec
# Access	84	87	87	87	88	86	84	89	87	83	82	86
# Fistula	53	52	54	56	58	59	58	59	61	60	59	57
Network % - 2004	55%	55%	55%									
Natl. % - 2004	35%	35%	35%									
Network % - 2005				58%	58%	58%	58%	58%	58%	58%	58%	58%
Natl. % - 2005				39%	39%	39%	39%	39%	39%	39%	39%	39%
% Fistula	63%	60%	62%	64%	66%	69%	69%	66%	70%	72%	72%	66%



	Jan	Feb	Mar	Apr	May	Jun	Jul	Aug	Sep	Oct	Nov	Dec
# Access	84	87	87	87	88	86	84	89	87	83	82	86
# Graft	16	16	16	15	14	15	15	14	13	11	11	12
Network %												
Natl. %												
% Graft	19%	18%	18%	17%	16%	17%	18%	16%	15%	13%	13%	14%



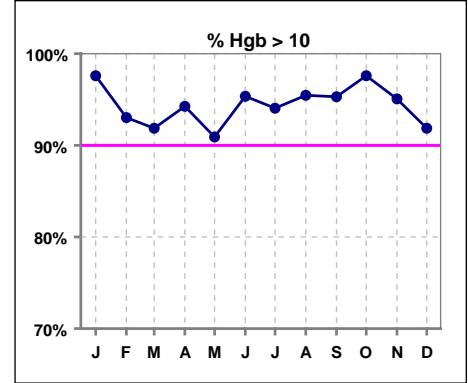
	Jan	Feb	Mar	Apr	May	Jun	Jul	Aug	Sep	Oct	Nov	Dec
# Access	84	87	87	87	88	86	84	89	87	83	82	86
# Catheters	15	19	16	15	15	11	10	15	12	11	11	16
Network %												
Natl. % - 2004	27%	27%	27%	27%	27%	27%	27%	27%	27%	27%	27%	27%
% Catheters	18%	22%	18%	17%	17%	13%	12%	17%	14%	13%	13%	19%



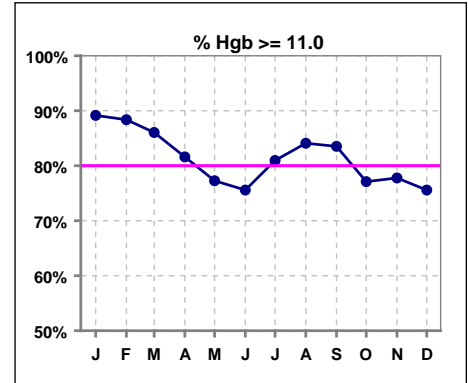
*Methodology: a) Monthly values based on patient's monthly average of all values present for the month; b) Quarter values are average of all values for quarter; c) Values not averaged use last value present at months end.

V. ANEMIA

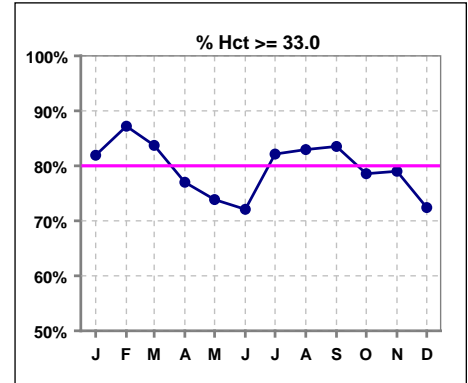
	Jan	Feb	Mar	Apr	May	Jun	Jul	Aug	Sep	Oct	Nov	Dec
# Hgb	83	86	86	87	88	86	84	88	85	83	81	86
# Hgb > 10.0	81	80	79	82	80	82	79	84	81	81	77	79
Pop. Mean =	12.5	12.5	12.4	12.2	12.0	11.8	11.8	12.3	12.2	11.8	12.0	11.9
Std. Deviation =	1.3	1.3	1.3	1.3	1.3	1.2	1.1	1.3	1.3	1.1	1.2	1.3
Network Mean =	11.8	11.8	11.8	11.8	11.8	11.8	11.8	11.8	11.8	11.8	11.8	11.8
Natl. Mean =												
% Hgb > 10.0	98%	93%	92%	94%	91%	95%	94%	95%	95%	98%	95%	92%



	Jan	Feb	Mar	Apr	May	Jun	Jul	Aug	Sep	Oct	Nov	Dec
# Hgb	83	86	86	87	88	86	84	88	85	83	81	86
# Hgb >= 11.0	74	76	74	71	68	65	68	74	71	64	63	65
Pop. Mean =	12.5	12.5	12.4	12.2	12.0	11.8	11.8	12.3	12.2	11.8	12.0	11.9
Std. Deviation =	1.3	1.3	1.3	1.3	1.3	1.2	1.1	1.3	1.3	1.1	1.2	1.3
Network Mean =	11.8	11.8	11.8	11.8	11.8	11.8	11.8	11.8	11.8	11.8	11.8	11.8
Natl. Mean =												
% Hgb >= 11.0	89%	88%	86%	82%	77%	76%	81%	84%	84%	77%	78%	76%
% Hgb <= 11.0						26%	20%	16%	18%	24%	23%	26%
% Natl. >= 11 2004	80%	80%	80%	80%	80%	80%	80%	80%	80%	80%	80%	80%



	Jan	Feb	Mar	Apr	May	Jun	Jul	Aug	Sep	Oct	Nov	Dec
# Hct	83	86	86	87	88	86	84	88	85	84	81	87
# Hct >= 33.0	68	75	72	67	65	62	69	73	71	66	64	63
Pop. Mean =	37	37	37	36	35	35	35	36	36	35	36	35
Std. Deviation =	4.17	4.24	3.90	3.80	4.00	3.66	3.39	3.98	4.00	3.27	3.85	3.74
Network Mean =												
Natl. Mean =												
% Hct >= 33.0	82%	87%	84%	77%	74%	72%	82%	83%	84%	79%	79%	72%
*% Network >= 33	91%	91%	91%									
*% Natl. >= 33	89%	89%	89%									
*Figures for 2004												
**% Network >= 33				94%	94%	94%	94%	94%	94%	94%	94%	94%
**% Natl. >= 33				92%	92%	92%	92%	92%	92%	92%	92%	92%
**Figures for 2005												

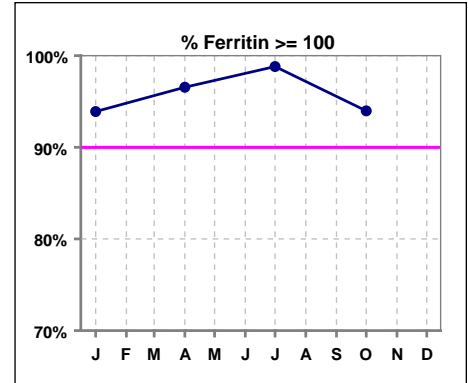


*Methodology: a) Monthly values based on patient's monthly average of all values present for the month; b) Quarter values are average of all values for quarter; c) Values not averaged use last value present at months end.

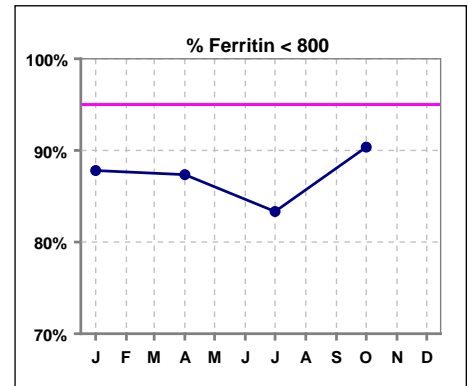
V. ANEMIA - CONT.

Iron Profile

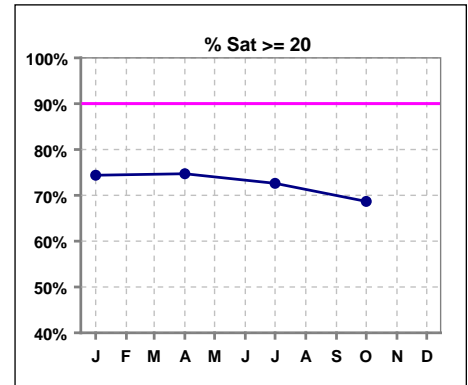
	Jan	Feb	Mar	Apr	May	Jun	Jul	Aug	Sep	Oct	Nov	Dec
# Ferritin	82			87			84			83		
# Ferritin >= 100	77			84			83			78		
Pop. Mean =	477			517			524			451		
Std. Deviation =	296			257			293			281		
Network Mean =												
Natl. Mean =												
% Ferritin >= 100	94%			97%			99%			94%		
%Natl. >=100 2004	94%			94%			94%			94%		



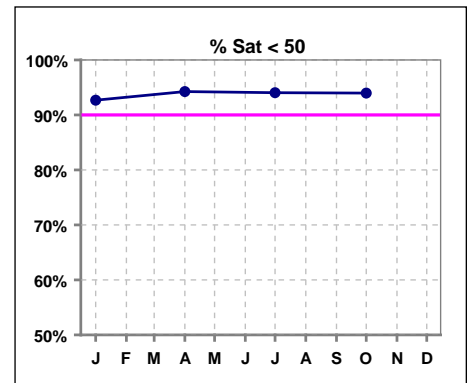
	Jan	Feb	Mar	Apr	May	Jun	Jul	Aug	Sep	Oct	Nov	Dec
# Ferritin	82			87			84			83		
# Ferritin < 800	72			76			70			75		
Pop. Mean =	477			517			524			451		
Std. Deviation =	296			257			293			281		
Network Mean =												
Natl. Mean =												
% Ferritin < 800	88%			87%			83%			90%		



	Jan	Feb	Mar	Apr	May	Jun	Jul	Aug	Sep	Oct	Nov	Dec
# % Sat	82			87			84			83		
# % Sat >= 20	61			65			61			57		
Pop. Mean =	27			27			27			26		
Std. Deviation =	13			14			13			14		
Network Mean =												
Natl. Mean =												
% Sat% >= 20	74%			75%			73%			69%		
%Natl. >=20 2004	81%			81%			81%			81%		



	Jan	Feb	Mar	Apr	May	Jun	Jul	Aug	Sep	Oct	Nov	Dec
# % Sat	82			87			84			83		
# % Sat < 50	76			82			79			78		
Pop. Mean =	27			27			27			26		
Std. Deviation =	13			14			13			14		
Network Mean =												
Natl. Mean =												
% Sat% < 50	93%			94%			94%			94%		



*Methodology: a) Monthly values based on patient's monthly average of all values present for the month; b) Quarter values are average of all values for quarter; c) Values not averaged use last value present at months end.