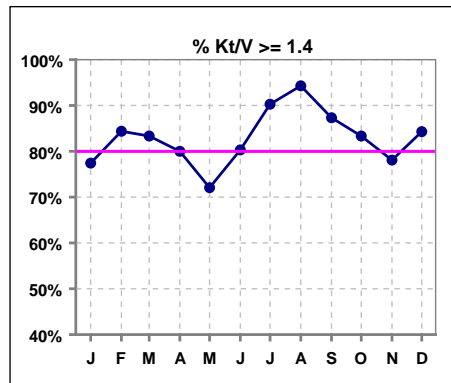


I. ADEQUACY OF DIALYSIS

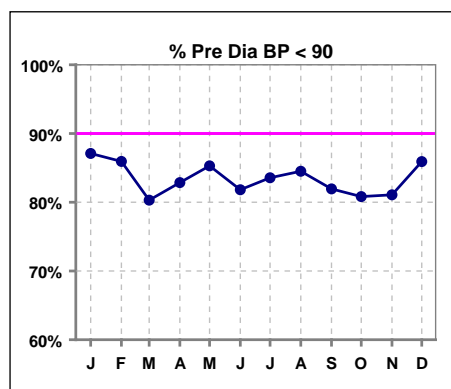
	Jan	Feb	Mar	Apr	May	Jun	Jul	Aug	Sep	Oct	Nov	Dec
# Kt/V	62	64	66	70	68	66	72	70	71	72	73	70
# Kt/V >= 1.4	48	54	55	56	49	53	65	66	62	60	57	59
Pop. Mean =	1.64	1.65	1.68	1.67	1.63	1.69	1.71	1.72	1.66	1.65	1.64	1.72
Std. Deviation =	0.31	0.28	0.38	0.41	0.33	0.36	0.34	0.31	0.30	0.33	0.33	0.33
Network Mean =	1.59	1.59	1.59	1.59	1.59	1.59	1.59	1.59	1.59	1.59	1.59	1.59
Natl. Mean =												
% Kt/V >= 1.4	77%	84%	83%	80%	72%	80%	90%	94%	87%	83%	78%	84%
**% Kt/V >= 1.2	90%	97%	92%	91%	93%	95%	97%	97%	96%	90%	93%	97%

** As of Apr. '04

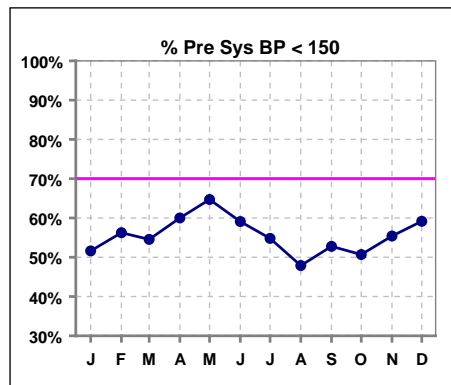


Blood Pressure Control (Pre)

	Jan	Feb	Mar	Apr	May	Jun	Jul	Aug	Sep	Oct	Nov	Dec
# Pre Dia BP	62	64	66	70	68	66	73	71	72	73	74	71
# Pre Dia BP < 90	54	55	53	58	58	54	61	60	59	59	60	61
Pop. Mean =	78	76	75	74	73	74	77	76	76	76	76	76
Std. Deviation =	16.2	14.1	14.6	15.7	14.8	14.8	16.5	14.5	15.5	16.8	15.7	16.3
Network Mean =												
Natl. Mean =												
% Pre Dia BP < 90	87%	86%	80%	83%	85%	82%	84%	85%	82%	81%	81%	86%



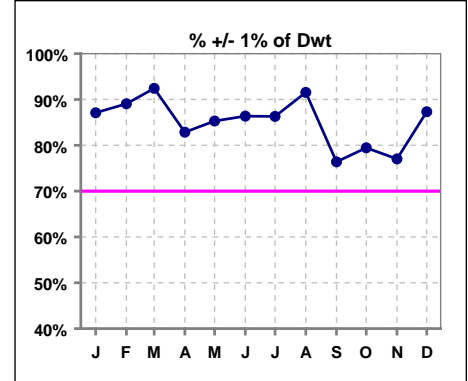
	Jan	Feb	Mar	Apr	May	Jun	Jul	Aug	Sep	Oct	Nov	Dec
# Pre Sys BP	62	64	66	70	68	66	73	71	72	73	74	71
# Pre Sys BP < 150	32	36	36	42	44	39	40	34	38	37	41	42
Pop. Mean =	148	146	147	144	142	145	148	148	147	148	148	146
Std. Deviation =	23.2	22.5	24.6	24.6	22.9	23.5	26.0	23.3	24.2	25.2	25.5	25.3
Network Mean =												
Natl. Mean =												
% Pre Sys BP < 150	52%	56%	55%	60%	65%	59%	55%	48%	53%	51%	55%	59%



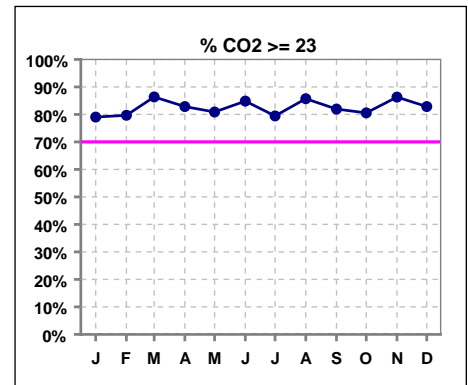
*Methodology: a) Monthly values based on patient's monthly average of all values present for the month; b) Quarter values are average of all values for quarter; c) Values not averaged use last value present at months end.

I. ADEQUACY OF DIALYSIS - CONT.

	Jan	Feb	Mar	Apr	May	Jun	Jul	Aug	Sep	Oct	Nov	Dec
# Post/Dwt	62	64	66	70	68	66	73	71	72	73	74	71
# +/- 1% of Dwt	54	57	61	58	58	57	63	65	55	58	57	62
% +/- 1 % of Dwt	87%	89%	92%	83%	85%	86%	86%	92%	76%	79%	77%	87%



	Jan	Feb	Mar	Apr	May	Jun	Jul	Aug	Sep	Oct	Nov	Dec
# CO2	62	64	66	70	68	66	73	70	72	72	73	70
# CO2 >= 23	49	51	57	58	55	56	58	60	59	58	63	58
Pop. Mean =	25	25	25	25	25	25	25	25	24	25	25	25
Std. Deviation =	2.92	2.59	2.77	2.75	2.55	2.95	3.27	2.95	3.45	3.07	2.85	2.79
Network Mean =												
Natl. Mean =												
% CO2 >= 23	79%	80%	86%	83%	81%	85%	79%	86%	82%	81%	86%	83%

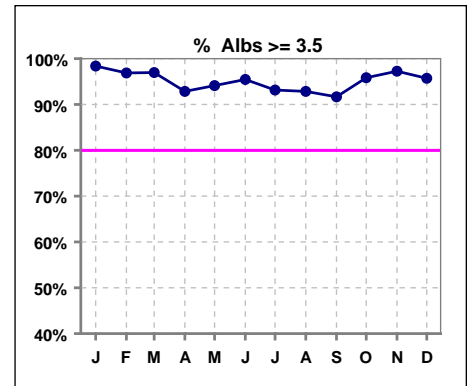


*Methodology: a) Monthly values based on patient's monthly average of all values present for the month; b) Quarter values are average of all values for quarter; c) Values not averaged use last value present at months end.

*Albumin values use BCG method - as of July 2001

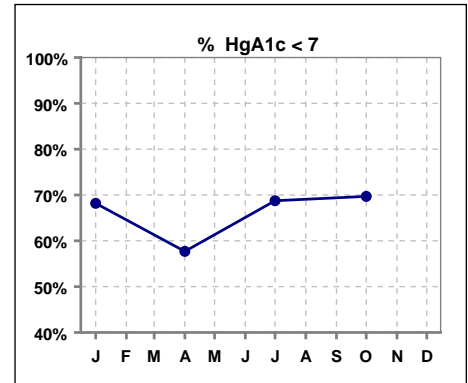
II. NUTRITION

	Jan	Feb	Mar	Apr	May	Jun	Jul	Aug	Sep	Oct	Nov	Dec
# Albumin	62	64	66	70	68	66	73	70	72	72	73	70
# Albumin >= 3.5	61	62	64	65	64	63	68	65	66	69	71	67
Pop. Mean =	4.1	4.0	4.0	4.0	4.0	4.0	3.9	4.0	3.9	4.0	4.1	4.0
Std. Deviation =	0.32	0.35	0.36	0.34	0.36	0.43	0.38	0.36	0.34	0.30	0.31	0.35
Network Mean =	3.4	3.4	3.4	3.4	3.4	3.4	3.4	3.4	3.4	3.4	3.4	3.4
Natl. Mean =	3.8	3.8	3.8	3.8	3.8	3.8	3.8	3.8	3.8	3.8	3.8	3.8
% Alb >= 3.5	98%	97%	97%	93%	94%	95%	93%	93%	92%	96%	97%	96%
% Alb >= 3.0						95%	99%	97%	99%	100%	100%	99%
% Alb >= 4.0	66%	53%	59%	56%	62%	56%	47%	51%	53%	60%	70%	50%
*Natl % >= 3.5-BCG	81%	81%	81%	81%	81%	81%	81%	81%	81%	81%	81%	81%
*Natl. % >= 4.0-BCG	39%	39%	39%	39%	39%	39%	39%	39%	39%	39%	39%	39%



*Figures for 2004

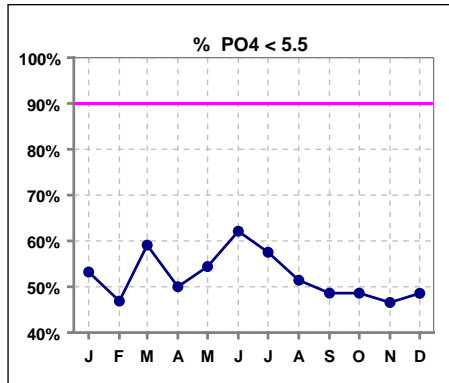
	Jan	Feb	Mar	Apr	May	Jun	Jul	Aug	Sep	Oct	Nov	Dec
# HgA1c	22			26			32			33		
# HgA1c < 7	15			15			22			23		
Pop. Mean =	6.8			6.6			6.5			6.9		
Std. Deviation =	1.12			1.57			1.48			1.82		
Network Mean =												
Natl. Mean =												
% HgA1c < 7	68%			58%			69%			70%		



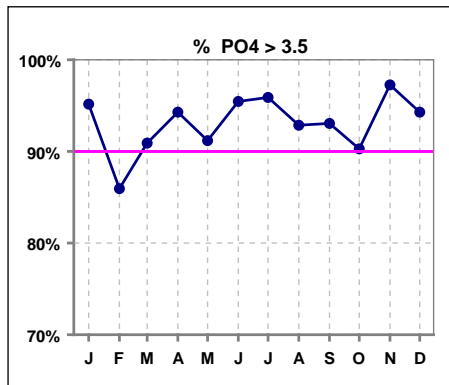
*Methodology: a) Monthly values based on patient's monthly average of all values present for the month; b) Quarter values are average of all values for quarter; c) Values not averaged use last value present at months end.

III. OSTEODYSTROPHY

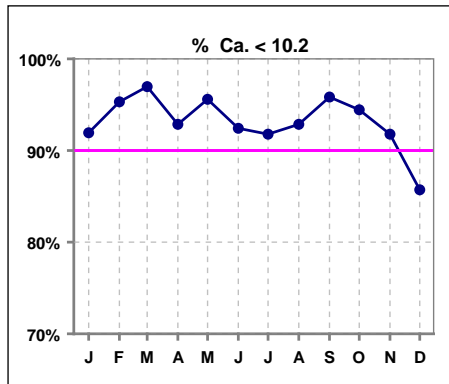
	Jan	Feb	Mar	Apr	May	Jun	Jul	Aug	Sep	Oct	Nov	Dec
# PO4	62	64	66	70	68	66	73	70	72	72	73	70
# PO4 < 5.5	33	30	39	35	37	41	42	36	35	35	34	34
Pop. Mean =	5.6	5.4	5.4	5.5	5.4	5.2	5.5	5.5	5.5	5.7	5.9	5.7
Std. Deviation =	1.34	1.53	1.56	1.41	1.41	1.26	1.42	1.37	1.54	1.60	1.77	1.58
Network Mean =												
Natl. Mean =												
% PO4 < 5.5	53%	47%	59%	50%	54%	62%	58%	51%	49%	49%	47%	49%



	Jan	Feb	Mar	Apr	May	Jun	Jul	Aug	Sep	Oct	Nov	Dec
# PO4	62	64	66	70	68	66	73	70	72	72	73	70
# PO4 > 3.5	59	55	60	66	62	63	70	65	67	65	71	66
Pop. Mean =	5.6	5.4	5.4	5.5	5.4	5.2	5.5	5.5	5.5	5.7	5.9	5.7
Std. Deviation =	1.34	1.53	1.56	1.41	1.41	1.26	1.42	1.37	1.54	1.60	1.77	1.58
Network Mean =												
Natl. Mean =												
% PO4 > 3.5	95%	86%	91%	94%	91%	95%	96%	93%	93%	90%	97%	94%



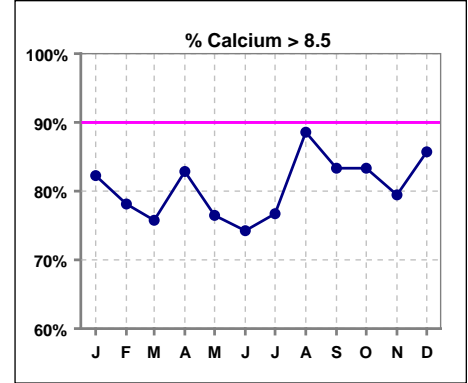
	Jan	Feb	Mar	Apr	May	Jun	Jul	Aug	Sep	Oct	Nov	Dec
# Calcium	62	64	66	70	68	66	73	70	72	72	73	70
# Calcium < 10.2	57	61	64	65	65	61	67	65	69	68	67	60
Pop. Mean =	9.1	9.1	9.1	9.1	9.0	9.0	9.0	9.2	9.1	9.2	9.2	9.3
Std. Deviation =	0.67	0.68	0.65	0.68	0.67	0.73	0.69	0.65	0.63	0.65	0.77	0.75
Network Mean =												
Natl. Mean =												
% Ca < 10.2	92%	95%	97%	93%	96%	92%	92%	93%	96%	94%	92%	86%



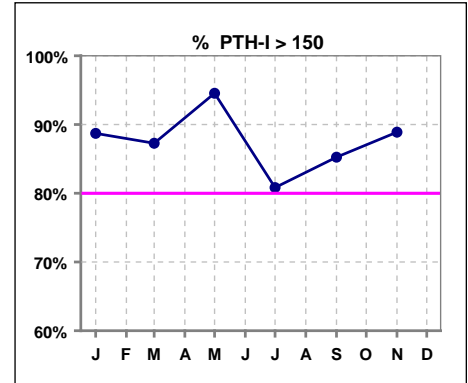
*Methodology: a) Monthly values based on patient's monthly average of all values present for the month; b) Quarter values are average of all values for quarter; c) Values not averaged use last value present at months end.

III. OSTEODYSTROPHY - CONT.

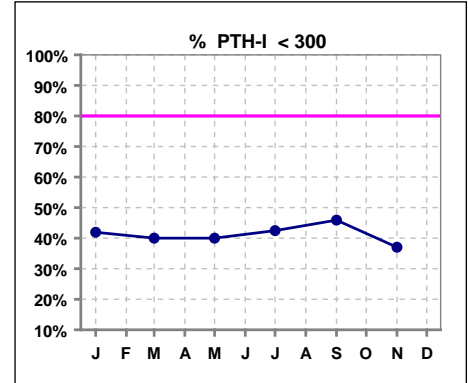
	Jan	Feb	Mar	Apr	May	Jun	Jul	Aug	Sep	Oct	Nov	Dec
# Calcium	62	64	66	70	68	66	73	70	72	72	73	70
# Calcium > 8.5	51	50	50	58	52	49	56	62	60	60	58	60
Pop. Mean =	9.1	9.1	9.1	9.1	9.0	9.0	9.0	9.2	9.1	9.2	9.2	9.3
Std. Deviation =	0.67	0.68	0.65	0.68	0.67	0.73	0.69	0.65	0.63	0.65	0.77	0.75
Network Mean =												
Natl. Mean =												
% Calcium > 8.5	82%	78%	76%	83%	76%	74%	77%	89%	83%	83%	79%	86%



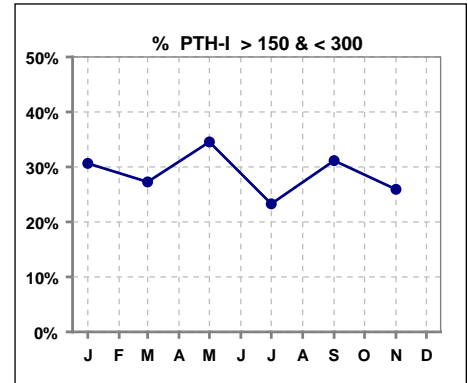
	Jan	Feb	Mar	Apr	May	Jun	Jul	Aug	Sep	Oct	Nov	Dec
# PTH-I	62		55		55		73		61		27	
# PTH-I > 150	55		48		52		59		52		24	
Pop. Mean =	440		489		536		436		423		471	
Std. Deviation =	435		495		476		395		334		441	
Network Mean =												
Natl. Mean =												
% PTH-I > 150	89%		87%		95%		81%		85%		89%	



	Jan	Feb	Mar	Apr	May	Jun	Jul	Aug	Sep	Oct	Nov	Dec
# PTH-I	62		55		55		73		61		27	
# PTH-I < 300	26		22		22		31		28		10	
Pop. Mean =	440		489		536		436		423		471	
Std. Deviation =	435		495		476		395		334		441	
Network Mean =												
Natl. Mean =												
% PTH-I < 300	42%		40%		40%		42%		46%		37%	



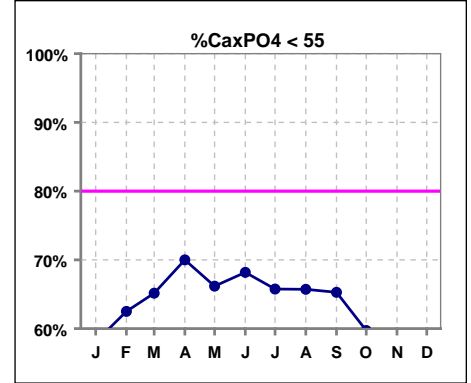
	Jan	Feb	Mar	Apr	May	Jun	Jul	Aug	Sep	Oct	Nov	Dec
# PTH-I	62		55		55		73		61		27	
# PTH-I > 150 & < 300	19		15		19		17		19		7	
Pop. Mean =	440		489		536		436		423		471	
Std. Deviation =	435		495		476		395		334		441	
Network Mean =												
Natl. Mean =												
% PTH-I > 150 & < 300	31%		27%		35%		23%		31%		26%	



*Methodology: a) Monthly values based on patient's monthly average of all values present for the month; b) Quarter values are average of all values for quarter; c) Values not averaged use last value present at months end.

III. OSTEODYSTROPHY - CONT.

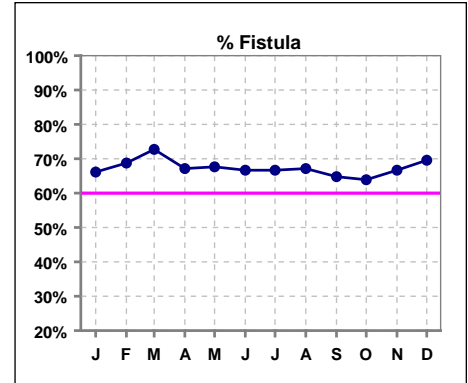
	Jan	Feb	Mar	Apr	May	Jun	Jul	Aug	Sep	Oct	Nov	Dec
# Ca x PO4	62	64	66	70	68	66	73	70	72	72	73	70
# Ca x PO4 < 55	36	40	43	49	45	45	48	46	47	43	36	38
Pop. Mean =	53.6	50.9	50.0	49.7	49.7	49.1	51.4	51.2	51.1	52.8	56.0	55.3
Std. Deviation =	14.2	15.8	16.2	12.8	13.6	13.7	14.9	13.5	14.7	16.0	16.9	16.9
Network Mean =												
Natl. Mean =												
% CaxPO4 < 55	58%	63%	65%	70%	66%	68%	66%	66%	65%	60%	49%	54%



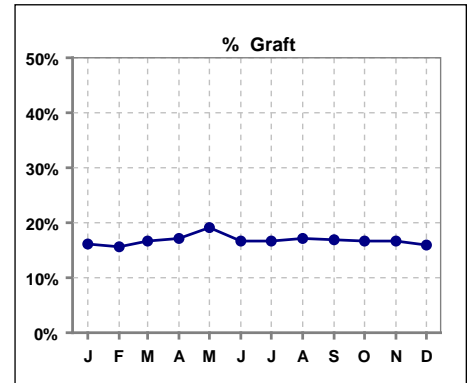
*Methodology: a) Monthly values based on patient's monthly average of all values present for the month; b) Quarter values are average of all values for quarter; c) Values not averaged use last value present at months end.

IV. ACCESS

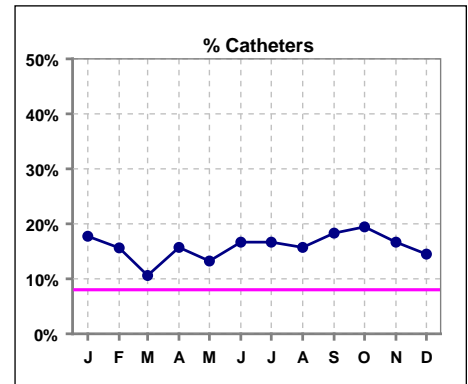
	Jan	Feb	Mar	Apr	May	Jun	Jul	Aug	Sep	Oct	Nov	Dec
# Access	62	64	66	70	68	66	72	70	71	72	72	69
# Fistula	41	44	48	47	46	44	48	47	46	46	48	48
Network % - 2004	55%	55%	55%									
Natl. % - 2004	35%	35%	35%									
Network % - 2005				58%	58%	58%	58%	58%	58%	58%	58%	58%
Natl. % - 2005				39%	39%	39%	39%	39%	39%	39%	39%	39%
% Fistula	66%	69%	73%	67%	68%	67%	67%	67%	65%	64%	67%	70%



	Jan	Feb	Mar	Apr	May	Jun	Jul	Aug	Sep	Oct	Nov	Dec
# Access	62	64	66	70	68	66	72	70	71	72	72	69
# Graft	10	10	11	12	13	11	12	12	12	12	12	11
Network %												
Natl. %												
% Graft	16%	16%	17%	17%	19%	17%	17%	17%	17%	17%	17%	16%



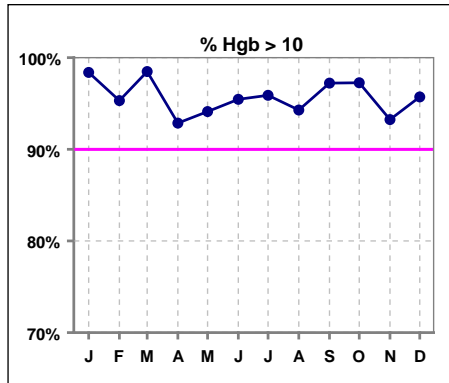
	Jan	Feb	Mar	Apr	May	Jun	Jul	Aug	Sep	Oct	Nov	Dec
# Access	62	64	66	70	68	66	72	70	71	72	72	69
# Catheters	11	10	7	11	9	11	12	11	13	14	12	10
Network %												
Natl. % - 2004	27%	27%	27%	27%	27%	27%	27%	27%	27%	27%	27%	27%
% Catheters	18%	16%	11%	16%	13%	17%	17%	16%	18%	19%	17%	14%



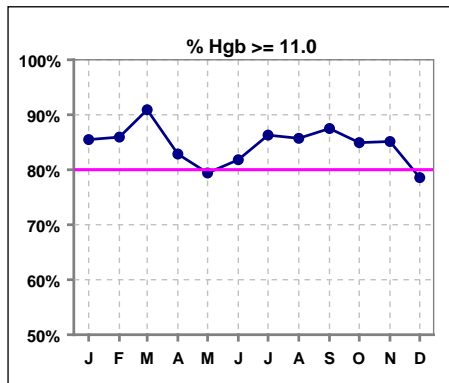
*Methodology: a) Monthly values based on patient's monthly average of all values present for the month; b) Quarter values are average of all values for quarter; c) Values not averaged use last value present at months end.

V. ANEMIA

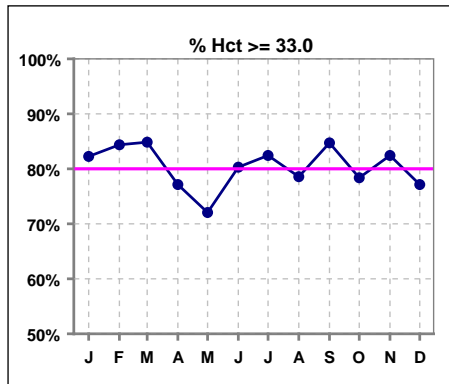
	Jan	Feb	Mar	Apr	May	Jun	Jul	Aug	Sep	Oct	Nov	Dec
# Hgb	62	64	66	70	68	66	73	70	72	73	74	70
# Hgb > 10.0	61	61	65	65	64	63	70	66	70	71	69	67
Pop. Mean =	12.5	12.5	12.6	12.3	12.0	12.0	12.2	12.4	12.1	12.1	12.2	12.0
Std. Deviation =	1.3	1.5	1.3	1.3	1.2	1.1	1.2	1.4	1.3	1.1	1.3	1.1
Network Mean =	11.8	11.8	11.8	11.8	11.8	11.8	11.8	11.8	11.8	11.8	11.8	11.8
Natl. Mean =												
% Hgb > 10.0	98%	95%	98%	93%	94%	95%	96%	94%	97%	97%	93%	96%



	Jan	Feb	Mar	Apr	May	Jun	Jul	Aug	Sep	Oct	Nov	Dec
# Hgb	62	64	66	70	68	66	73	70	72	73	74	70
# Hgb >= 11.0	53	55	60	58	54	54	63	60	63	62	63	55
Pop. Mean =	12.5	12.5	12.6	12.3	12.0	12.0	12.2	12.4	12.1	12.1	12.2	12.0
Std. Deviation =	1.3	1.5	1.3	1.3	1.2	1.1	1.2	1.4	1.3	1.1	1.3	1.1
Network Mean =	11.8	11.8	11.8	11.8	11.8	11.8	11.8	11.8	11.8	11.8	11.8	11.8
Natl. Mean =												
% Hgb >= 11.0	85%	86%	91%	83%	79%	82%	86%	86%	88%	85%	85%	79%
% Hgb <= 11.0						20%	14%	16%	14%	15%	16%	23%
% Natl. >= 11 2004	80%	80%	80%	80%	80%	80%	80%	80%	80%	80%	80%	80%



	Jan	Feb	Mar	Apr	May	Jun	Jul	Aug	Sep	Oct	Nov	Dec
# Hct	62	64	66	70	68	66	74	70	72	74	74	70
# Hct >= 33.0	51	54	56	54	49	53	61	55	61	58	61	54
Pop. Mean =	37	37	37	36	35	36	36	37	36	36	36	35
Std. Deviation =	4.22	4.79	4.06	3.99	3.78	3.36	3.45	4.41	3.89	3.36	3.90	3.34
Network Mean =												
Natl. Mean =												
% Hct >= 33.0	82%	84%	85%	77%	72%	80%	82%	79%	85%	78%	82%	77%
*% Network >= 33	91%	91%	91%									
*% Natl. >= 33	89%	89%	89%									
*Figures for 2004												
**% Network >= 33				94%	94%	94%	94%	94%	94%	94%	94%	94%
**% Natl. >= 33				92%	92%	92%	92%	92%	92%	92%	92%	92%



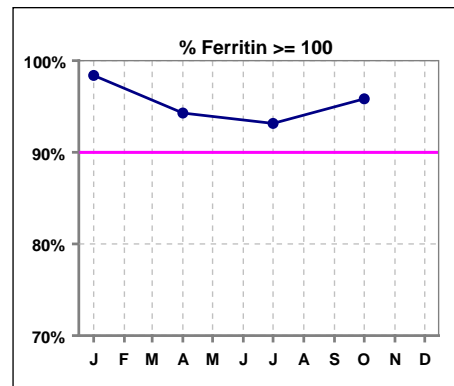
****Figures for 2005**

*Methodology: a) Monthly values based on patient's monthly average of all values present for the month; b) Quarter values are average of all values for quarter; c) Values not averaged use last value present at months end.

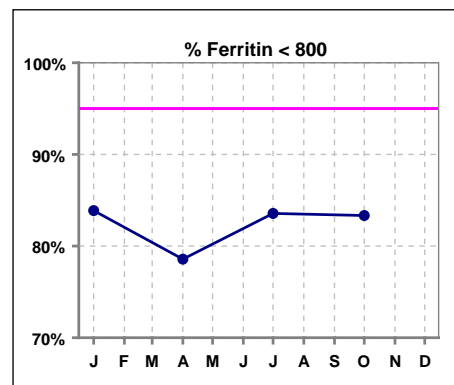
V. ANEMIA - CONT.

Iron Profile

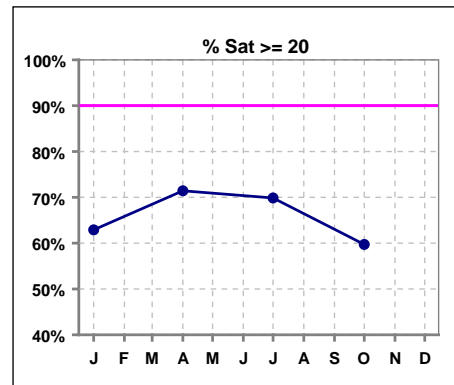
	Jan	Feb	Mar	Apr	May	Jun	Jul	Aug	Sep	Oct	Nov	Dec
# Ferritin	62			70			73			72		
# Ferritin >= 100	61			66			68			69		
Pop. Mean =	555			563			541			582		
Std. Deviation =	436			334			295			508		
Network Mean =												
Natl. Mean =												
% Ferritin >= 100	98%			94%			93%			96%		
%Natl. >=100 2004	94%			94%			94%			94%		



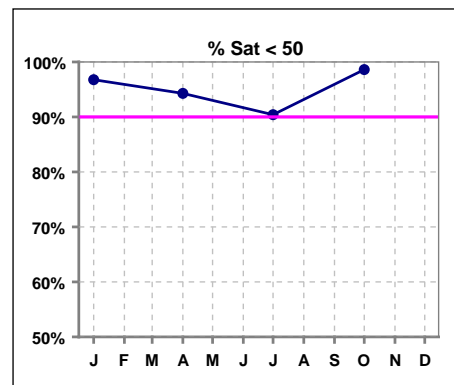
	Jan	Feb	Mar	Apr	May	Jun	Jul	Aug	Sep	Oct	Nov	Dec
# Ferritin	62			70			73			72		
# Ferritin < 800	52			55			61			60		
Pop. Mean =	555			563			541			582		
Std. Deviation =	436			334			295			508		
Network Mean =												
Natl. Mean =												
% Ferritin < 800	84%			79%			84%			83%		



	Jan	Feb	Mar	Apr	May	Jun	Jul	Aug	Sep	Oct	Nov	Dec
# % Sat	62			70			73			72		
# % Sat >= 20	39			50			51			43		
Pop. Mean =	24			27			26			24		
Std. Deviation =	12			14			15			9		
Network Mean =												
Natl. Mean =												
% Sat% >= 20	63%			71%			70%			60%		
%Natl. >=20 2004	81%			81%			81%			81%		



	Jan	Feb	Mar	Apr	May	Jun	Jul	Aug	Sep	Oct	Nov	Dec
# % Sat	62			70			73			72		
# % Sat < 50	60			66			66			71		
Pop. Mean =	24			27			26			24		
Std. Deviation =	12			14			15			9		
Network Mean =												
Natl. Mean =												
% Sat% < 50	97%			94%			90%			99%		



*Methodology: a) Monthly values based on patient's monthly average of all values present for the month; b) Quarter values are average of all values for quarter; c) Values not averaged use last value present at months end.