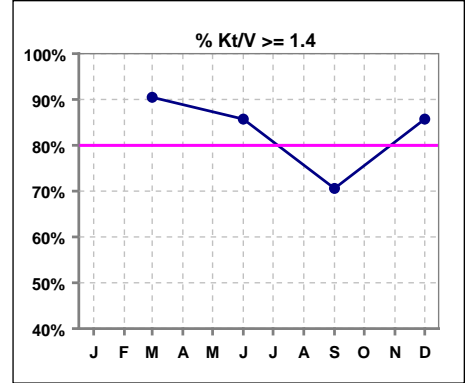


I. ADEQUACY OF DIALYSIS

	Jan	Feb	Mar	Apr	May	Jun	Jul	Aug	Sep	Oct	Nov	Dec
# Kt/V			21			14			17			14
# Kt/V >= 1.4			19			12			12			12
Pop. Mean =			1.61			1.70			1.55			1.62
Std. Deviation =			0.24			0.26			0.29			0.17
Network Mean =			1.59			1.59			1.59			1.59
Natl. Mean =												
% Kt/V >= 1.4			90%			86%			71%			86%
**% Kt/V >= 1.2			100%			100%			100%			100%
** As of Apr. '04												

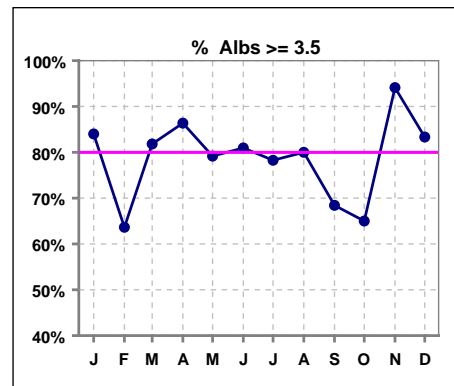


*Methodology: a) Monthly values based on patient's monthly average of all values present for the month; b) Quarter values are average of all values for quarter; c) Values not averaged use last value present at months end.

*Albumin values use BCG method - as of July 2001

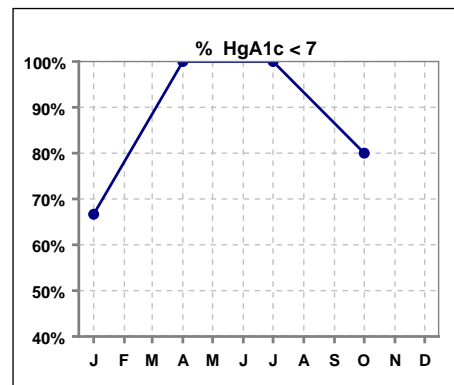
II. NUTRITION

	Jan	Feb	Mar	Apr	May	Jun	Jul	Aug	Sep	Oct	Nov	Dec
# Albumin	25	22	22	22	24	21	23	20	19	20	17	18
# Albumin >= 3.5	21	14	18	19	19	17	18	16	13	13	16	15
Pop. Mean =	3.8	3.7	3.7	3.8	3.7	3.8	3.8	3.7	3.7	3.7	3.9	3.6
Std. Deviation =	0.46	0.52	0.46	0.45	0.43	0.49	0.36	0.39	0.56	0.58	0.36	0.57
Network Mean =	3.4	3.4	3.4	3.4	3.4	3.4	3.4	3.4	3.4	3.4	3.4	3.4
Natl. Mean =	3.8	3.8	3.8	3.8	3.8	3.8	3.8	3.8	3.8	3.8	3.8	3.8
% Alb >= 3.5	84%	64%	82%	86%	79%	81%	78%	80%	68%	65%	94%	83%
% Alb >= 3.0						90%	96%	95%	84%	90%	100%	89%
% Alb >= 4.0	36%	41%	32%	55%	33%	38%	26%	25%	42%	40%	47%	22%
*Natl % >= 3.5-BCG	81%	81%	81%	81%	81%	81%	81%	81%	81%	81%	81%	81%
*Natl. % >= 4.0-BCG	39%	39%	39%	39%	39%	39%	39%	39%	39%	39%	39%	39%



*Figures for 2004

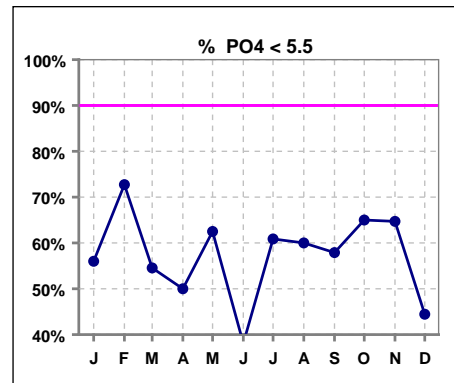
	Jan	Feb	Mar	Apr	May	Jun	Jul	Aug	Sep	Oct	Nov	Dec
# HgA1c	3			2			2			5		
# HgA1c < 7	2			2			2			4		
Pop. Mean =	6.3			5.3			5.6			6.2		
Std. Deviation =	1.50			0.85			0.64			1.52		
Network Mean =												
Natl. Mean =												
% HgA1c < 7	67%			100%			100%			80%		



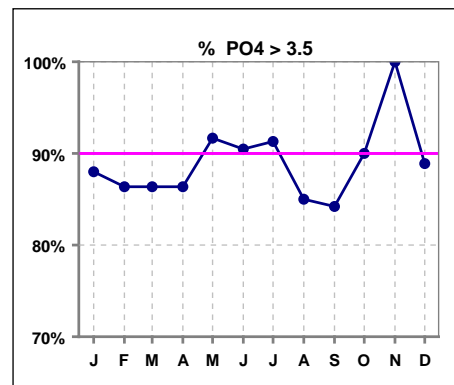
*Methodology: a) Monthly values based on patient's monthly average of all values present for the month; b) Quarter values are average of all values for quarter; c) Values not averaged use last value present at months end.

III. OSTEODYSTROPHY

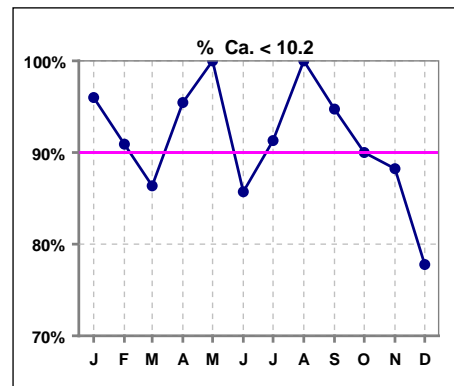
	Jan	Feb	Mar	Apr	May	Jun	Jul	Aug	Sep	Oct	Nov	Dec
# PO4	25	22	22	22	24	21	23	20	19	20	17	18
# PO4 < 5.5	14	16	12	11	15	8	14	12	11	13	11	8
Pop. Mean =	5.3	4.7	5.4	5.2	5.1	6.0	5.6	5.0	5.4	5.0	5.4	5.4
Std. Deviation =	1.88	1.24	1.60	1.28	1.34	1.71	2.94	1.30	1.84	1.14	1.31	1.90
Network Mean =												
Natl. Mean =												
% PO4 < 5.5	56%	73%	55%	50%	63%	38%	61%	60%	58%	65%	65%	44%



	Jan	Feb	Mar	Apr	May	Jun	Jul	Aug	Sep	Oct	Nov	Dec
# PO4	25	22	22	22	24	21	23	20	19	20	17	18
# PO4 > 3.5	22	19	19	19	22	19	21	17	16	18	17	16
Pop. Mean =	5.3	4.7	5.4	5.2	5.1	6.0	5.6	5.0	5.4	5.0	5.4	5.4
Std. Deviation =	1.88	1.24	1.60	1.28	1.34	1.71	2.94	1.30	1.84	1.14	1.31	1.90
Network Mean =												
Natl. Mean =												
% PO4 > 3.5	88%	86%	86%	86%	92%	90%	91%	85%	84%	90%	100%	89%



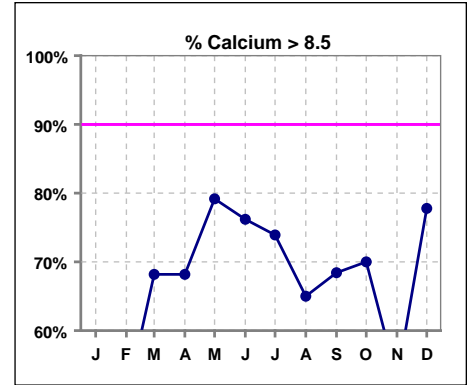
	Jan	Feb	Mar	Apr	May	Jun	Jul	Aug	Sep	Oct	Nov	Dec
# Calcium	25	22	22	22	24	21	23	20	19	20	17	18
# Calcium < 10.2	24	20	19	21	24	18	21	20	18	18	15	14
Pop. Mean =	8.8	8.7	8.7	8.9	8.9	9.0	9.0	9.0	8.8	8.9	8.7	9.0
Std. Deviation =	0.89	1.09	1.18	0.89	0.63	0.97	0.88	0.69	0.91	0.90	1.07	1.07
Network Mean =												
Natl. Mean =												
% Ca < 10.2	96%	91%	86%	95%	100%	86%	91%	100%	95%	90%	88%	78%



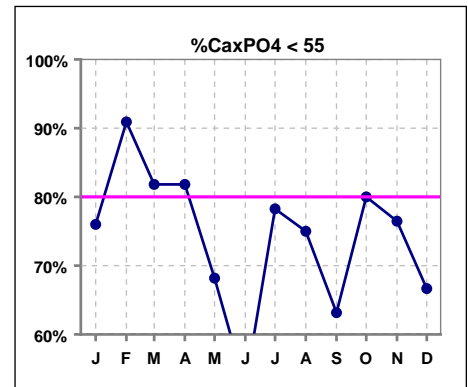
*Methodology: a) Monthly values based on patient's monthly average of all values present for the month; b) Quarter values are average of all values for quarter; c) Values not averaged use last value present at months end.

III. OSTEODYSTROPHY - CONT.

	Jan	Feb	Mar	Apr	May	Jun	Jul	Aug	Sep	Oct	Nov	Dec
# Calcium	25	22	22	22	24	21	23	20	19	20	17	18
# Calcium > 8.5	14	11	15	15	19	16	17	13	13	14	9	14
Pop. Mean =	8.8	8.7	8.7	8.9	8.9	9.0	9.0	9.0	8.8	8.9	8.7	9.0
Std. Deviation =	0.89	1.09	1.18	0.89	0.63	0.97	0.88	0.69	0.91	0.90	1.07	1.07
Network Mean =												
Natl. Mean =												
% Calcium > 8.5	56%	50%	68%	68%	79%	76%	74%	65%	68%	70%	53%	78%



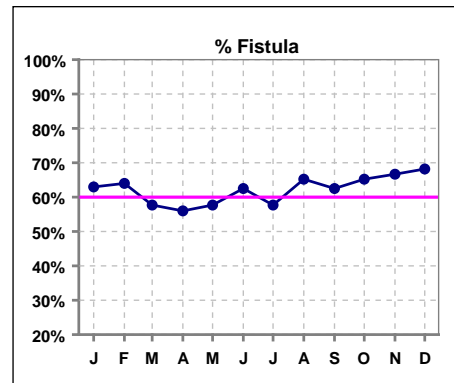
	Jan	Feb	Mar	Apr	May	Jun	Jul	Aug	Sep	Oct	Nov	Dec
# Ca x PO4	25	22	22	22	22	21	23	20	19	20	17	18
# Ca x PO4 < 55	19	20	18	18	15	11	18	15	12	16	13	12
Pop. Mean =	46.3	40.9	46.5	45.2	45.7	54.6	50.7	45.3	47.8	44.8	46.5	48.1
Std. Deviation =	16.1	11.0	11.0	10.9	13.6	17.9	29.1	11.8	17.3	12.5	12.0	16.4
Network Mean =												
Natl. Mean =												
% CaxPO4 < 55	76%	91%	82%	82%	68%	52%	78%	75%	63%	80%	76%	67%



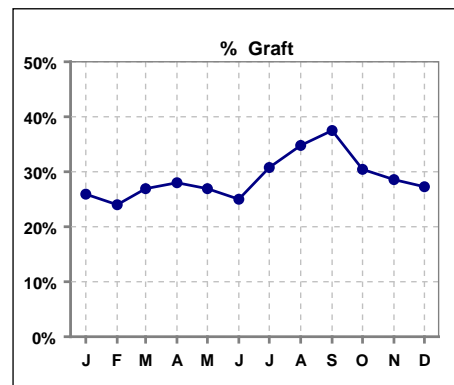
*Methodology: a) Monthly values based on patient's monthly average of all values present for the month; b) Quarter values are average of all values for quarter; c) Values not averaged use last value present at months end.

IV. ACCESS

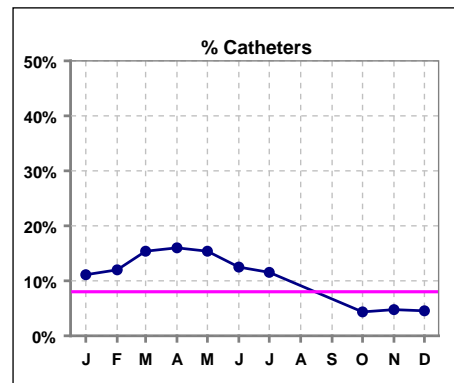
	Jan	Feb	Mar	Apr	May	Jun	Jul	Aug	Sep	Oct	Nov	Dec
# Access	27	25	26	25	26	24	26	23	24	23	21	22
# Fistula	17	16	15	14	15	15	15	15	15	15	14	15
Network % - 2004	55%	55%	55%									
Natl. % - 2004	35%	35%	35%									
Network % - 2005				58%	58%	58%	58%	58%	58%	58%	58%	58%
Natl. % - 2005				39%	39%	39%	39%	39%	39%	39%	39%	39%
% Fistula	63%	64%	58%	56%	58%	63%	58%	65%	63%	65%	67%	68%



	Jan	Feb	Mar	Apr	May	Jun	Jul	Aug	Sep	Oct	Nov	Dec
# Access	27	25	26	25	26	24	26	23	24	23	21	22
# Graft	7	6	7	7	7	6	8	8	9	7	6	6
Network %												
Natl. %												
% Graft	26%	24%	27%	28%	27%	25%	31%	35%	38%	30%	29%	27%



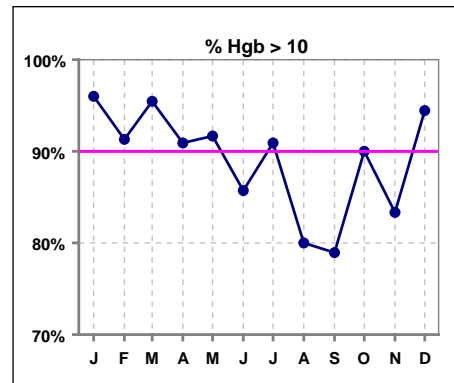
	Jan	Feb	Mar	Apr	May	Jun	Jul	Aug	Sep	Oct	Nov	Dec
# Access	27	25	26	25	26	24	26	23	24	23	21	22
# Catheters	3	3	4	4	4	3	3			1	1	1
Network %												
Natl. % - 2004	27%	27%	27%	27%	27%	27%	27%	27%	27%	27%	27%	27%
% Catheters	11%	12%	15%	16%	15%	13%	12%			4%	5%	5%



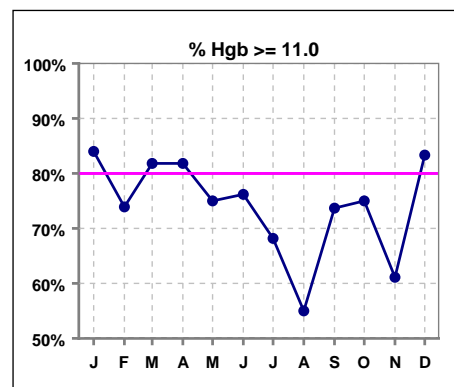
*Methodology: a) Monthly values based on patient's monthly average of all values present for the month; b) Quarter values are average of all values for quarter; c) Values not averaged use last value present at months end.

V. ANEMIA

	Jan	Feb	Mar	Apr	May	Jun	Jul	Aug	Sep	Oct	Nov	Dec
# Hgb	25	23	22	22	24	21	22	20	19	20	18	18
# Hgb > 10.0	24	21	21	20	22	18	20	16	15	18	15	17
Pop. Mean =	12.5	11.7	11.8	11.7	12.0	11.7	11.8	11.4	11.6	11.6	11.7	11.9
Std. Deviation =	1.4	1.1	1.3	1.5	1.3	1.7	1.4	1.5	1.5	1.2	1.5	1.3
Network Mean =	11.8	11.8	11.8	11.8	11.8	11.8	11.8	11.8	11.8	11.8	11.8	11.8
Natl. Mean =												
% Hgb > 10.0	96%	91%	95%	91%	92%	86%	91%	80%	79%	90%	83%	94%



	Jan	Feb	Mar	Apr	May	Jun	Jul	Aug	Sep	Oct	Nov	Dec
# Hgb	25	23	22	22	24	21	22	20	19	20	18	18
# Hgb >= 11.0	21	17	18	18	18	16	15	11	14	15	11	15
Pop. Mean =	12.5	11.7	11.8	11.7	12.0	11.7	11.8	11.4	11.6	11.6	11.7	11.9
Std. Deviation =	1.4	1.1	1.3	1.5	1.3	1.7	1.4	1.5	1.5	1.2	1.5	1.3
Network Mean =	11.8	11.8	11.8	11.8	11.8	11.8	11.8	11.8	11.8	11.8	11.8	11.8
Natl. Mean =												
% Hgb >= 11.0	84%	74%	82%	82%	75%	76%	68%	55%	74%	75%	61%	83%
% Hgb <= 11.0						33%	36%	45%	26%	25%	39%	28%
% Natl. >= 11 2004	80%	80%	80%	80%	80%	80%	80%	80%	80%	80%	80%	80%

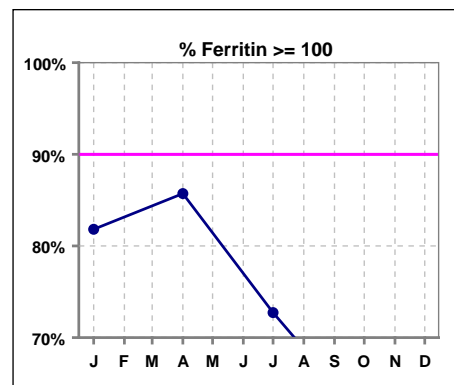


*Methodology: a) Monthly values based on patient's monthly average of all values present for the month; b) Quarter values are average of all values for quarter; c) Values not averaged use last value present at months end.

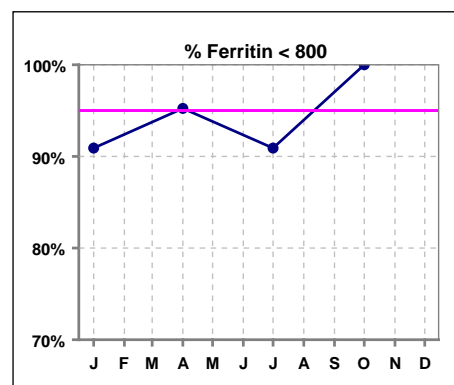
V. ANEMIA - CONT.

Iron Profile

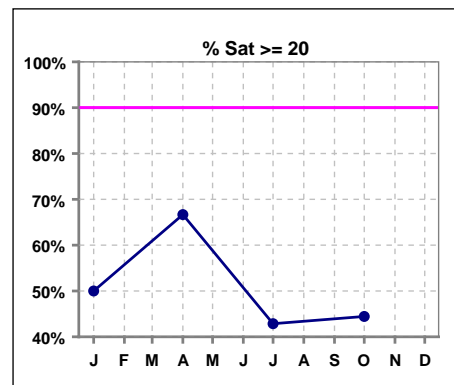
	Jan	Feb	Mar	Apr	May	Jun	Jul	Aug	Sep	Oct	Nov	Dec
# Ferritin	22			21			22			18		
# Ferritin >= 100	18			18			16			11		
Pop. Mean =	303			329			314			258		
Std. Deviation =	273			277			291			240		
Network Mean =												
Natl. Mean =												
% Ferritin >= 100	82%			86%			73%			61%		
%Natl. >=100 2004	94%			94%			94%			94%		



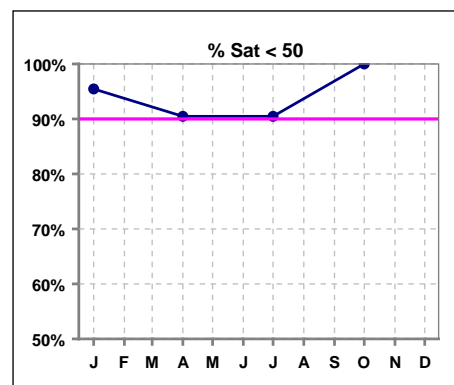
	Jan	Feb	Mar	Apr	May	Jun	Jul	Aug	Sep	Oct	Nov	Dec
# Ferritin	22			21			22			18		
# Ferritin < 800	20			20			20			18		
Pop. Mean =	303			329			314			258		
Std. Deviation =	273			277			291			240		
Network Mean =												
Natl. Mean =												
% Ferritin < 800	91%			95%			91%			100%		



	Jan	Feb	Mar	Apr	May	Jun	Jul	Aug	Sep	Oct	Nov	Dec
# % Sat	22			21			21			18		
# % Sat >= 20	11			14			9			8		
Pop. Mean =	23			29			25			20		
Std. Deviation =	17			15			19			13		
Network Mean =												
Natl. Mean =												
% Sat% >= 20	50%			67%			43%			44%		
%Natl. >=20 2004	81%			81%			81%			81%		



	Jan	Feb	Mar	Apr	May	Jun	Jul	Aug	Sep	Oct	Nov	Dec
# % Sat	22			21			21			18		
# % Sat < 50	21			19			19			18		
Pop. Mean =	23			29			25			20		
Std. Deviation =	17			15			19			13		
Network Mean =												
Natl. Mean =												
% Sat% < 50	95%			90%			90%			100%		



*Methodology: a) Monthly values based on patient's monthly average of all values present for the month; b) Quarter values are average of all values for quarter; c) Values not averaged use last value present at months end.