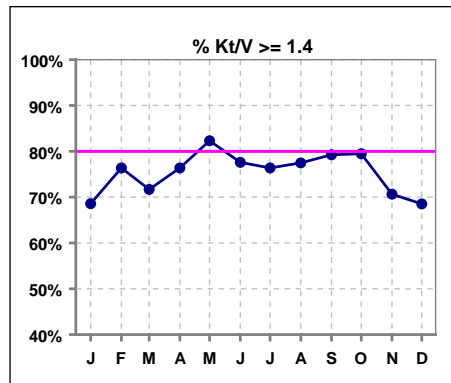


I. ADEQUACY OF DIALYSIS

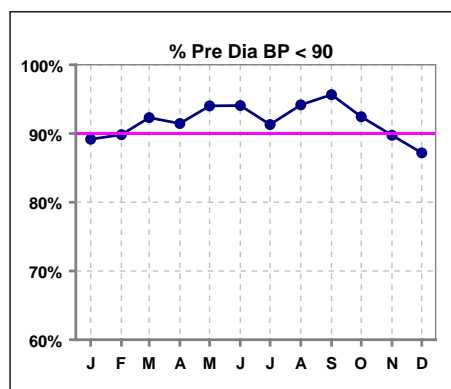
	Jan	Feb	Mar	Apr	May	Jun	Jul	Aug	Sep	Oct	Nov	Dec
# Kt/V	105	110	113	110	113	116	110	111	106	112	109	108
# Kt/V >= 1.4	72	84	81	84	93	90	84	86	84	89	77	74
Pop. Mean =	1.60	1.66	1.60	1.67	1.86	1.66	1.67	1.70	1.67	1.71	1.61	1.63
Std. Deviation =	0.39	0.49	0.49	0.47	0.87	0.49	0.50	0.44	0.34	0.70	0.44	0.44
Network Mean =	1.59	1.59	1.59	1.59	1.59	1.59	1.59	1.59	1.59	1.59	1.59	1.59
Natl. Mean =												
% Kt/V >= 1.4	69%	76%	72%	76%	82%	78%	76%	77%	79%	79%	71%	69%
**% Kt/V >= 1.2	87%	88%	86%	85%	89%	87%	89%	89%	92%	88%	86%	82%

** As of Apr. '04

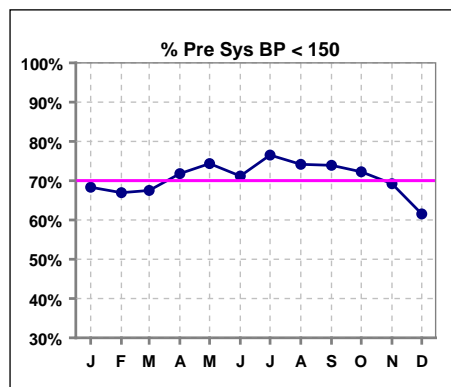


Blood Pressure Control (Pre)

	Jan	Feb	Mar	Apr	May	Jun	Jul	Aug	Sep	Oct	Nov	Dec
# Pre Dia BP	120	118	117	117	117	118	115	120	115	119	117	117
# Pre Dia BP < 90	107	106	108	107	110	111	105	113	110	110	105	102
Pop. Mean =	72	72	72	72	70	71	71	70	71	71	73	73
Std. Deviation =	13.3	14.2	13.4	12.6	12.5	11.9	12.3	11.9	12.4	12.9	13.7	14.3
Network Mean =												
Natl. Mean =												
% Pre Dia BP < 90	89%	90%	92%	91%	94%	94%	91%	94%	96%	92%	90%	87%



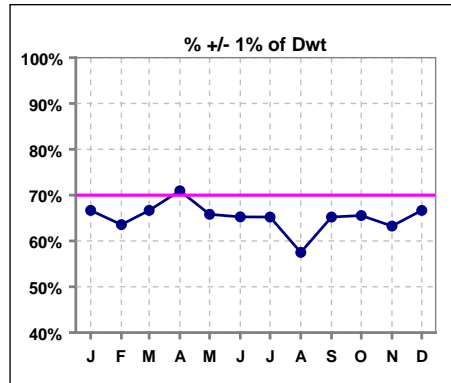
	Jan	Feb	Mar	Apr	May	Jun	Jul	Aug	Sep	Oct	Nov	Dec
# Pre Sys BP	120	118	117	117	117	118	115	120	115	119	117	117
# Pre Sys BP < 150	82	79	79	84	87	84	88	89	85	86	81	72
Pop. Mean =	139	140	140	139	137	137	136	134	137	137	139	142
Std. Deviation =	20.4	24.3	22.2	22.6	22.9	22.6	22.4	22.0	22.0	23.6	22.9	24.0
Network Mean =												
Natl. Mean =												
% Pre Sys BP < 150	68%	67%	68%	72%	74%	71%	77%	74%	74%	72%	69%	62%



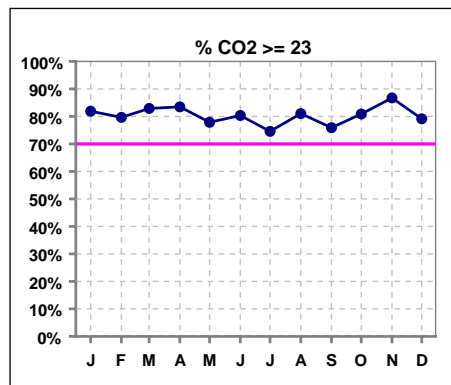
*Methodology: a) Monthly values based on patient's monthly average of all values present for the month; b) Quarter values are average of all values for quarter; c) Values not averaged use last value present at months end.

I. ADEQUACY OF DIALYSIS - CONT.

	Jan	Feb	Mar	Apr	May	Jun	Jul	Aug	Sep	Oct	Nov	Dec
# Post/Dwt	120	118	117	117	117	118	115	120	115	119	117	117
# +/- 1% of Dwt	80	75	78	83	77	77	75	69	75	78	74	78
% +/- 1 % of Dwt	67%	64%	67%	71%	66%	65%	65%	58%	65%	66%	63%	67%



	Jan	Feb	Mar	Apr	May	Jun	Jul	Aug	Sep	Oct	Nov	Dec
# CO2	116	113	117	115	113	117	114	116	112	115	113	115
# CO2 >= 23	95	90	97	96	88	94	85	94	85	93	98	91
Pop. Mean =	25	25	25	25	25	25	25	25	25	25	25	25
Std. Deviation =	2.94	2.96	3.18	3.41	3.25	3.11	3.25	2.93	3.24	3.15	3.14	3.14
Network Mean =												
Natl. Mean =												
% CO2 >= 23	82%	80%	83%	83%	78%	80%	75%	81%	76%	81%	87%	79%

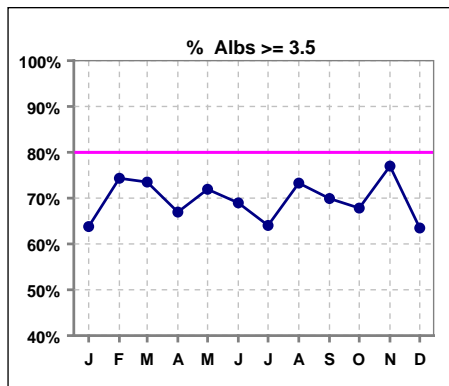


*Methodology: a) Monthly values based on patient's monthly average of all values present for the month; b) Quarter values are average of all values for quarter; c) Values not averaged use last value present at months end.

*Albumin values use BCG method - as of July 2001

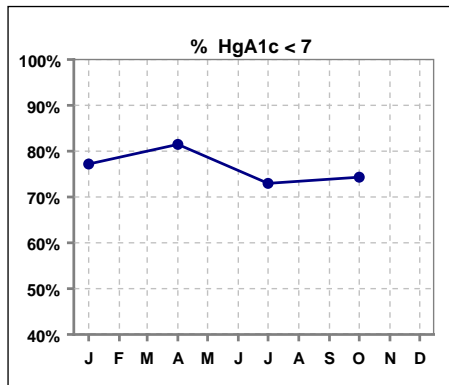
II. NUTRITION

	Jan	Feb	Mar	Apr	May	Jun	Jul	Aug	Sep	Oct	Nov	Dec
# Albumin	116	113	117	115	114	116	114	116	113	115	113	115
# Albumin >= 3.5	74	84	86	77	82	80	73	85	79	78	87	73
Pop. Mean =	3.6	3.7	3.7	3.6	3.7	3.6	3.6	3.6	3.6	3.6	3.7	3.6
Std. Deviation =	0.44	0.40	0.40	0.49	0.46	0.42	0.42	0.43	0.43	0.45	0.46	0.41
Network Mean =	3.4	3.4	3.4	3.4	3.4	3.4	3.4	3.4	3.4	3.4	3.4	3.4
Natl. Mean =	3.8	3.8	3.8	3.8	3.8	3.8	3.8	3.8	3.8	3.8	3.8	3.8
% Alb >= 3.5	64%	74%	74%	67%	72%	69%	64%	73%	70%	68%	77%	63%
% Alb >= 3.0						95%	94%	91%	91%	91%	94%	94%
% Alb >= 4.0	17%	29%	24%	23%	27%	20%	20%	19%	20%	23%	35%	23%
*Natl % >= 3.5-BCG	81%	81%	81%	81%	81%	81%	81%	81%	81%	81%	81%	81%
*Natl. % >= 4.0-BCG	39%	39%	39%	39%	39%	39%	39%	39%	39%	39%	39%	39%



*Figures for 2004

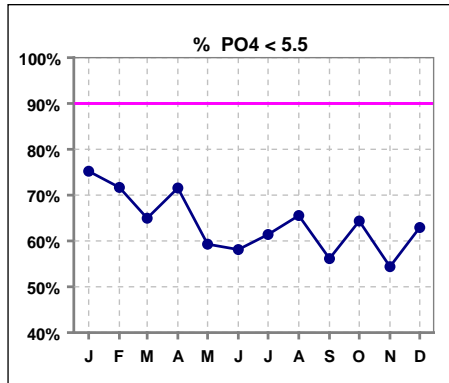
	Jan	Feb	Mar	Apr	May	Jun	Jul	Aug	Sep	Oct	Nov	Dec
# HgA1c	57			54			74			74		
# HgA1c < 7	44			44			54			55		
Pop. Mean =	6.2			6.0			6.0			6.3		
Std. Deviation =	1.21			1.03			1.32			1.82		
Network Mean =												
Natl. Mean =												
% HgA1c < 7	77%			81%			73%			74%		



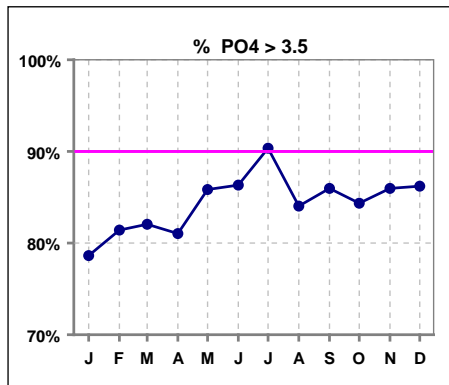
*Methodology: a) Monthly values based on patient's monthly average of all values present for the month; b) Quarter values are average of all values for quarter; c) Values not averaged use last value present at months end.

III. OSTEODYSTROPHY

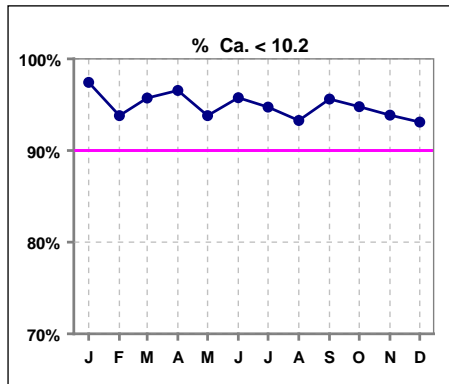
	Jan	Feb	Mar	Apr	May	Jun	Jul	Aug	Sep	Oct	Nov	Dec
# PO4	117	113	117	116	113	117	114	119	114	115	114	116
# PO4 < 5.5	88	81	76	83	67	68	70	78	64	74	62	73
Pop. Mean =	4.9	5.0	5.0	4.9	5.2	5.2	5.3	5.0	5.1	5.1	5.3	5.1
Std. Deviation =	1.77	1.59	1.59	1.62	1.59	1.51	1.51	1.55	1.57	1.57	1.71	1.80
Network Mean =												
Natl. Mean =												
% PO4 < 5.5	75%	72%	65%	72%	59%	58%	61%	66%	56%	64%	54%	63%



	Jan	Feb	Mar	Apr	May	Jun	Jul	Aug	Sep	Oct	Nov	Dec
# PO4	117	113	117	116	113	117	114	119	114	115	114	116
# PO4 > 3.5	92	92	96	94	97	101	103	100	98	97	98	100
Pop. Mean =	4.9	5.0	5.0	4.9	5.2	5.2	5.3	5.0	5.1	5.1	5.3	5.1
Std. Deviation =	1.77	1.59	1.59	1.62	1.59	1.51	1.51	1.55	1.57	1.57	1.71	1.80
Network Mean =												
Natl. Mean =												
% PO4 > 3.5	79%	81%	82%	81%	86%	86%	90%	84%	86%	84%	86%	86%



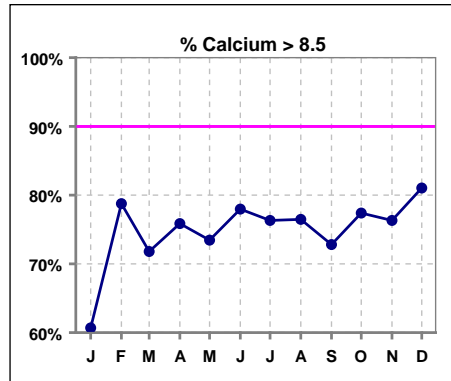
	Jan	Feb	Mar	Apr	May	Jun	Jul	Aug	Sep	Oct	Nov	Dec
# Calcium	117	113	117	116	113	118	114	119	114	115	114	116
# Calcium < 10.2	114	106	112	112	106	113	108	111	109	109	107	108
Pop. Mean =	8.8	9.0	9.0	9.0	9.0	9.0	9.0	9.0	9.0	9.1	9.0	9.1
Std. Deviation =	0.75	0.73	0.69	0.73	0.73	0.74	0.71	0.77	0.66	0.69	0.78	0.74
Network Mean =												
Natl. Mean =												
% Ca < 10.2	97%	94%	96%	97%	94%	96%	95%	93%	96%	95%	94%	93%



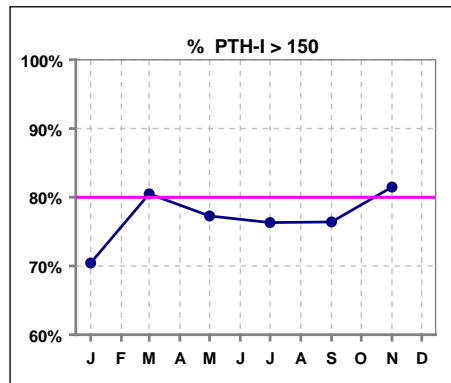
*Methodology: a) Monthly values based on patient's monthly average of all values present for the month; b) Quarter values are average of all values for quarter; c) Values not averaged use last value present at months end.

III. OSTEODYSTROPHY - CONT.

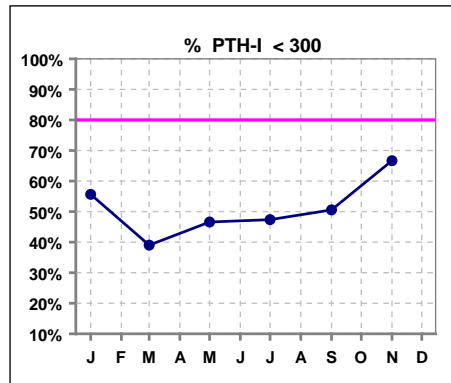
	Jan	Feb	Mar	Apr	May	Jun	Jul	Aug	Sep	Oct	Nov	Dec
# Calcium	117	113	117	116	113	118	114	119	114	115	114	116
# Calcium > 8.5	71	89	84	88	83	92	87	91	83	89	87	94
Pop. Mean =	8.8	9.0	9.0	9.0	9.0	9.0	9.0	9.0	9.0	9.1	9.0	9.1
Std. Deviation =	0.75	0.73	0.69	0.73	0.73	0.74	0.71	0.77	0.66	0.69	0.78	0.74
Network Mean =												
Natl. Mean =												
% Calcium > 8.5	61%	79%	72%	76%	73%	78%	76%	76%	73%	77%	76%	81%



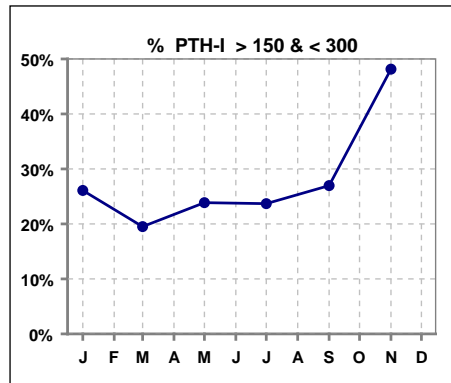
	Jan	Feb	Mar	Apr	May	Jun	Jul	Aug	Sep	Oct	Nov	Dec
# PTH-I	115		82		88		114		89		27	
# PTH-I > 150	81		66		68		87		68		22	
Pop. Mean =	378		430		428		461		419		365	
Std. Deviation =	348		324		387		434		420		295	
Network Mean =												
Natl. Mean =												
% PTH-I > 150	70%		80%		77%		76%		76%		81%	



	Jan	Feb	Mar	Apr	May	Jun	Jul	Aug	Sep	Oct	Nov	Dec
# PTH-I	115		82		88		114		89		27	
# PTH-I < 300	64		32		41		54		45		18	
Pop. Mean =	378		430		428		461		419		365	
Std. Deviation =	348		324		387		434		420		295	
Network Mean =												
Natl. Mean =												
% PTH-I < 300	56%		39%		47%		47%		51%		67%	



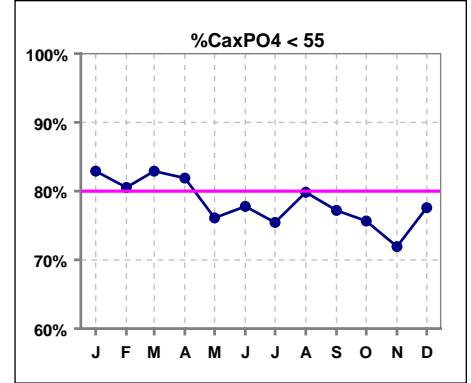
	Jan	Feb	Mar	Apr	May	Jun	Jul	Aug	Sep	Oct	Nov	Dec
# PTH-I	115		82		88		114		89		27	
# PTH-I > 150 & < 300	30		16		21		27		24		13	
Pop. Mean =	378		430		428		461		419		365	
Std. Deviation =	348		324		387		434		420		295	
Network Mean =												
Natl. Mean =												
% PTH-I > 150 & < 300	26%		20%		24%		24%		27%		48%	



*Methodology: a) Monthly values based on patient's monthly average of all values present for the month; b) Quarter values are average of all values for quarter; c) Values not averaged use last value present at months end.

III. OSTEODYSTROPHY - CONT.

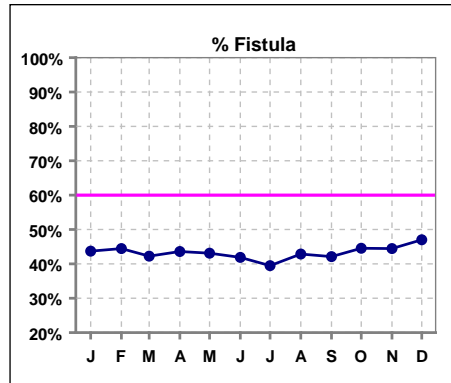
	Jan	Feb	Mar	Apr	May	Jun	Jul	Aug	Sep	Oct	Nov	Dec
# Ca x PO4	117	113	117	116	113	117	114	119	114	115	114	116
# Ca x PO4 < 55	97	91	97	95	86	91	86	95	88	87	82	90
Pop. Mean =	42.7	44.4	44.5	43.8	46.4	46.7	47.2	44.9	45.9	45.2	47.1	46.3
Std. Deviation =	14.3	14.1	14.3	15.4	13.9	13.0	12.9	12.6	13.3	14.4	15.6	14.8
Network Mean =												
Natl. Mean =												
% CaxPO4 < 55	83%	81%	83%	82%	76%	78%	75%	80%	77%	76%	72%	78%



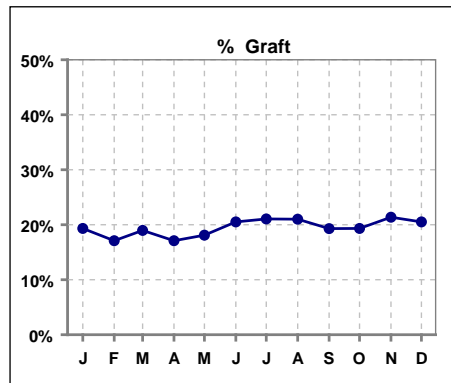
*Methodology: a) Monthly values based on patient's monthly average of all values present for the month; b) Quarter values are average of all values for quarter; c) Values not averaged use last value present at months end.

IV. ACCESS

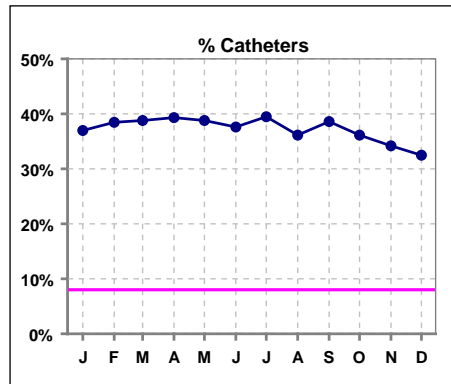
	Jan	Feb	Mar	Apr	May	Jun	Jul	Aug	Sep	Oct	Nov	Dec
# Access	119	117	116	117	116	117	114	119	114	119	117	117
# Fistula	52	52	49	51	50	49	45	51	48	53	52	55
Network % - 2004	55%	55%	55%									
Natl. % - 2004	35%	35%	35%									
Network % - 2005				58%	58%	58%	58%	58%	58%	58%	58%	58%
Natl. % - 2005				39%	39%	39%	39%	39%	39%	39%	39%	39%
% Fistula	44%	44%	42%	44%	43%	42%	39%	43%	42%	45%	44%	47%



	Jan	Feb	Mar	Apr	May	Jun	Jul	Aug	Sep	Oct	Nov	Dec
# Access	119	117	116	117	116	117	114	119	114	119	117	117
# Graft	23	20	22	20	21	24	24	25	22	23	25	24
Network %												
Natl. %												
% Graft	19%	17%	19%	17%	18%	21%	21%	21%	19%	19%	21%	21%



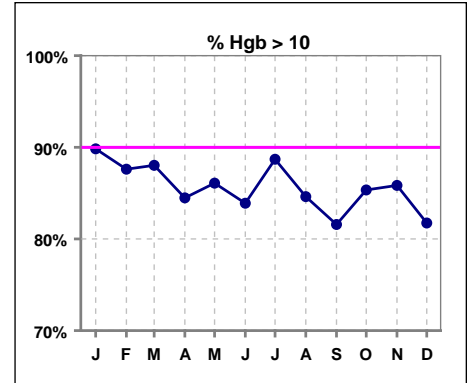
	Jan	Feb	Mar	Apr	May	Jun	Jul	Aug	Sep	Oct	Nov	Dec
# Access	119	117	116	117	116	117	114	119	114	119	117	117
# Catheters	44	45	45	46	45	44	45	43	44	43	40	38
Network %												
Natl. % - 2004	27%	27%	27%	27%	27%	27%	27%	27%	27%	27%	27%	27%
% Catheters	37%	38%	39%	39%	39%	38%	39%	36%	39%	36%	34%	32%



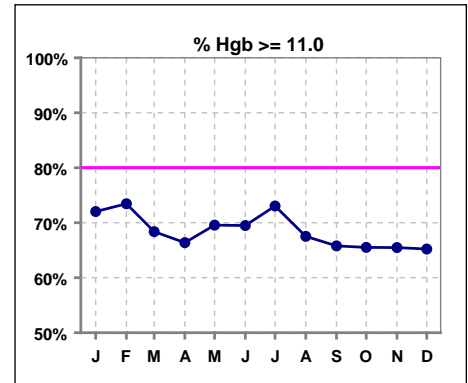
*Methodology: a) Monthly values based on patient's monthly average of all values present for the month; b) Quarter values are average of all values for quarter; c) Values not averaged use last value present at months end.

V. ANEMIA

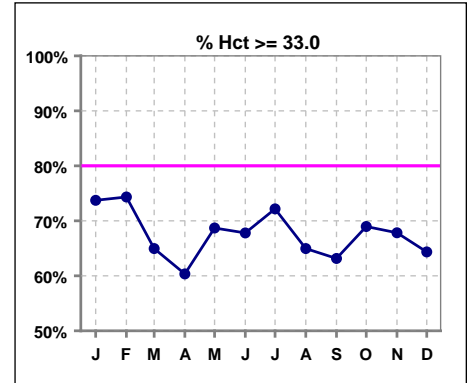
	Jan	Feb	Mar	Apr	May	Jun	Jul	Aug	Sep	Oct	Nov	Dec
# Hgb	118	113	117	116	115	118	115	117	114	116	113	115
# Hgb > 10.0	106	99	103	98	99	99	102	99	93	99	97	94
Pop. Mean =	12.0	11.9	11.8	11.6	11.7	11.7	11.8	11.6	11.4	11.4	11.6	11.5
Std. Deviation =	1.5	1.5	1.5	1.5	1.5	1.6	1.4	1.6	1.4	1.3	1.5	1.4
Network Mean =	11.8	11.8	11.8	11.8	11.8	11.8	11.8	11.8	11.8	11.8	11.8	11.8
Natl. Mean =												
% Hgb > 10.0	90%	88%	88%	84%	86%	84%	89%	85%	82%	85%	86%	82%



	Jan	Feb	Mar	Apr	May	Jun	Jul	Aug	Sep	Oct	Nov	Dec
# Hgb	118	113	117	116	115	118	115	117	114	116	113	115
# Hgb >= 11.0	85	83	80	77	80	82	84	79	75	76	74	75
Pop. Mean =	12.0	11.9	11.8	11.6	11.7	11.7	11.8	11.6	11.4	11.4	11.6	11.5
Std. Deviation =	1.5	1.5	1.5	1.5	1.5	1.6	1.4	1.6	1.4	1.3	1.5	1.4
Network Mean =	11.8	11.8	11.8	11.8	11.8	11.8	11.8	11.8	11.8	11.8	11.8	11.8
Natl. Mean =												
% Hgb >= 11.0	72%	73%	68%	66%	70%	69%	73%	68%	66%	66%	65%	65%
% Hgb <= 11.0						33%	27%	35%	34%	35%	35%	36%
% Natl. >= 11 2004	80%	80%	80%	80%	80%	80%	80%	80%	80%	80%	80%	80%



	Jan	Feb	Mar	Apr	May	Jun	Jul	Aug	Sep	Oct	Nov	Dec
# Hct	118	113	117	116	115	118	115	117	114	116	115	115
# Hct >= 33.0	87	84	76	70	79	80	83	76	72	80	78	74
Pop. Mean =	36	36	35	35	35	35	36	35	35	35	35	34
Std. Deviation =	4.79	4.64	4.56	4.65	4.49	4.91	4.09	4.59	4.03	3.71	4.48	4.21
Network Mean =												
Natl. Mean =												
% Hct >= 33.0	74%	74%	65%	60%	69%	68%	72%	65%	63%	69%	68%	64%
***% Network >= 33	91%	91%	91%									
***% Natl. >= 33	89%	89%	89%									
*Figures for 2004												
**% Network >= 33				94%	94%	94%	94%	94%	94%	94%	94%	94%
**% Natl. >= 33				92%	92%	92%	92%	92%	92%	92%	92%	92%



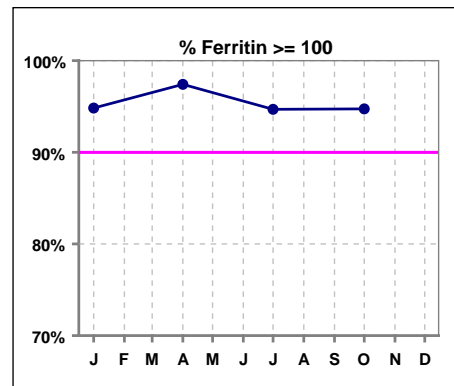
**Figures for 2005

*Methodology: a) Monthly values based on patient's monthly average of all values present for the month; b) Quarter values are average of all values for quarter; c) Values not averaged use last value present at months end.

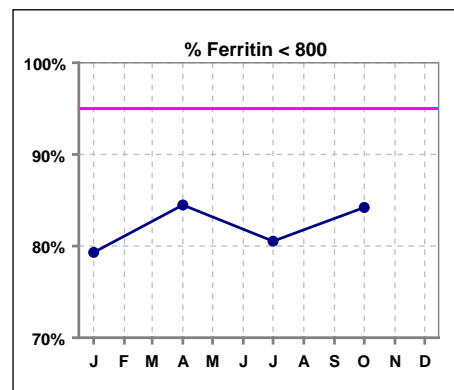
V. ANEMIA - CONT.

Iron Profile

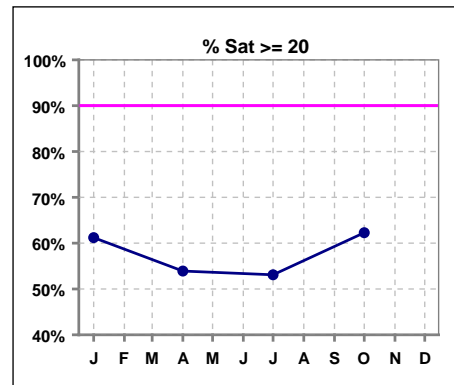
	Jan	Feb	Mar	Apr	May	Jun	Jul	Aug	Sep	Oct	Nov	Dec
# Ferritin	116			116			113			114		
# Ferritin >= 100	110			113			107			108		
Pop. Mean =	553			586			536			511		
Std. Deviation =	431			422			333			353		
Network Mean =												
Natl. Mean =												
% Ferritin >= 100	95%			97%			95%			95%		
%Natl. >=100 2004	94%			94%			94%			94%		



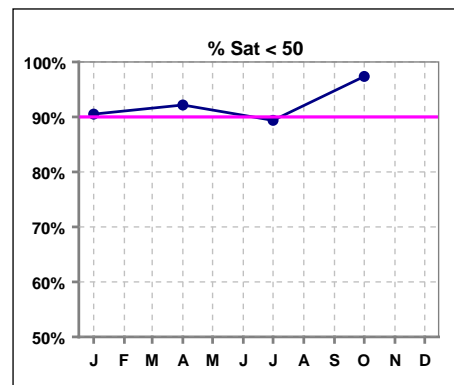
	Jan	Feb	Mar	Apr	May	Jun	Jul	Aug	Sep	Oct	Nov	Dec
# Ferritin	116			116			113			114		
# Ferritin < 800	92			98			91			96		
Pop. Mean =	553			586			536			511		
Std. Deviation =	431			422			333			353		
Network Mean =												
Natl. Mean =												
% Ferritin < 800	79%			84%			81%			84%		



	Jan	Feb	Mar	Apr	May	Jun	Jul	Aug	Sep	Oct	Nov	Dec
# % Sat	116			115			113			114		
# % Sat >= 20	71			62			60			71		
Pop. Mean =	26			24			26			24		
Std. Deviation =	16			14			17			11		
Network Mean =												
Natl. Mean =												
% Sat% >= 20	61%			54%			53%			62%		
%Natl. >=20 2004	81%			81%			81%			81%		



	Jan	Feb	Mar	Apr	May	Jun	Jul	Aug	Sep	Oct	Nov	Dec
# % Sat	116			115			113			114		
# % Sat < 50	105			106			101			111		
Pop. Mean =	26			24			26			24		
Std. Deviation =	16			14			17			11		
Network Mean =												
Natl. Mean =												
% Sat% < 50	91%			92%			89%			97%		



*Methodology: a) Monthly values based on patient's monthly average of all values present for the month; b) Quarter values are average of all values for quarter; c) Values not averaged use last value present at months end.