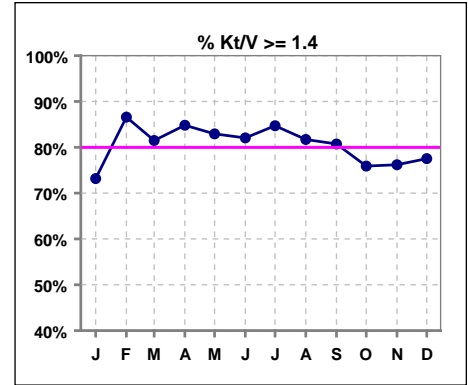


**I. ADEQUACY OF DIALYSIS**

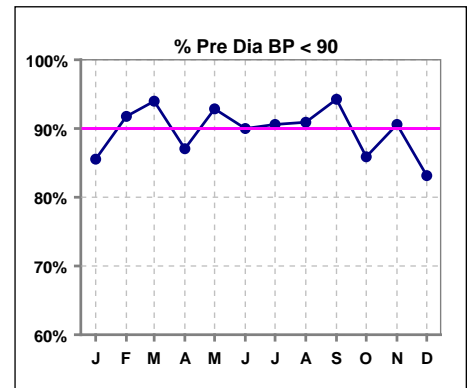
	Jan	Feb	Mar	Apr	May	Jun	Jul	Aug	Sep	Oct	Nov	Dec
# Kt/V	82	82	81	79	82	78	85	82	83	83	84	89
# Kt/V >= 1.4	60	71	66	67	68	64	72	67	67	63	64	69
Pop. Mean =	1.60	1.66	1.58	1.71	1.68	1.65	1.69	1.64	1.67	1.64	1.62	1.61
Std. Deviation =	0.35	0.38	0.30	0.35	0.31	0.31	0.50	0.35	0.29	0.37	0.27	0.32
Network Mean =	1.59	1.59	1.59	1.59	1.59	1.59	1.59	1.59	1.59	1.59	1.59	1.59
Natl. Mean =												
<b>% Kt/V &gt;= 1.4</b>	<b>73%</b>	<b>87%</b>	<b>81%</b>	<b>85%</b>	<b>83%</b>	<b>82%</b>	<b>85%</b>	<b>82%</b>	<b>81%</b>	<b>76%</b>	<b>76%</b>	<b>78%</b>
**% Kt/V >= 1.2	91%	95%	89%	95%	93%	91%	93%	93%	98%	90%	98%	91%

\*\* As of Apr. '04

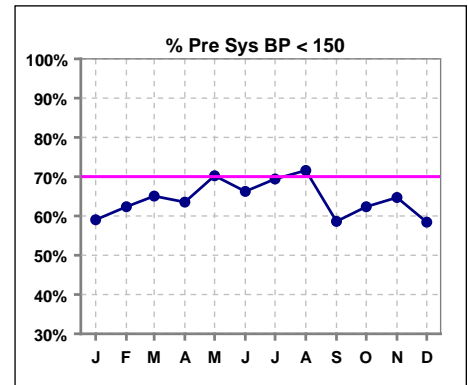


**Blood Pressure Control (Pre)**

	Jan	Feb	Mar	Apr	May	Jun	Jul	Aug	Sep	Oct	Nov	Dec
# Pre Dia BP	83	85	83	85	84	80	85	88	87	85	85	89
# Pre Dia BP < 90	71	78	78	74	78	72	77	80	82	73	77	74
Pop. Mean =	75	74	74	74	73	72	72	73	74	74	74	75
Std. Deviation =	12.7	11.0	11.8	12.3	12.7	12.4	14.0	13.2	12.4	12.5	12.2	13.1
Network Mean =												
Natl. Mean =												
<b>% Pre Dia BP &lt; 90</b>	<b>86%</b>	<b>92%</b>	<b>94%</b>	<b>87%</b>	<b>93%</b>	<b>90%</b>	<b>91%</b>	<b>91%</b>	<b>94%</b>	<b>86%</b>	<b>91%</b>	<b>83%</b>



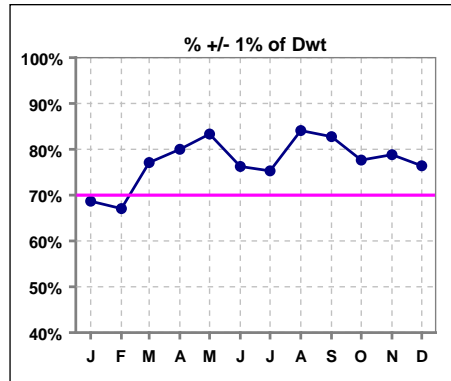
	Jan	Feb	Mar	Apr	May	Jun	Jul	Aug	Sep	Oct	Nov	Dec
# Pre Sys BP	83	85	83	85	84	80	85	88	87	85	85	89
# Pre Sys BP < 150	49	53	54	54	59	53	59	63	51	53	55	52
Pop. Mean =	145	143	141	141	140	139	138	138	142	141	142	144
Std. Deviation =	20.1	19.5	19.8	18.7	19.6	21.0	22.0	20.5	20.7	19.9	20.4	21.8
Network Mean =												
Natl. Mean =												
<b>% Pre Sys BP &lt; 150</b>	<b>59%</b>	<b>62%</b>	<b>65%</b>	<b>64%</b>	<b>70%</b>	<b>66%</b>	<b>69%</b>	<b>72%</b>	<b>59%</b>	<b>62%</b>	<b>65%</b>	<b>58%</b>



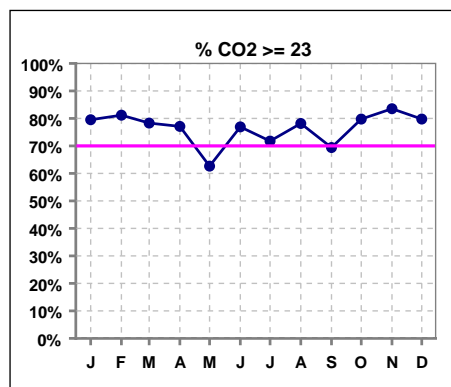
\*Methodology: a) Monthly values based on patient's monthly average of all values present for the month; b) Quarter values are average of all values for quarter; c) Values not averaged use last value present at months end.

**I. ADEQUACY OF DIALYSIS - CONT.**

	Jan	Feb	Mar	Apr	May	Jun	Jul	Aug	Sep	Oct	Nov	Dec
# Post/Dwt	83	85	83	85	84	80	85	88	87	85	85	89
# +/- 1% of Dwt	57	57	64	68	70	61	64	74	72	66	67	68
<b>% +/- 1 % of Dwt</b>	<b>69%</b>	<b>67%</b>	<b>77%</b>	<b>80%</b>	<b>83%</b>	<b>76%</b>	<b>75%</b>	<b>84%</b>	<b>83%</b>	<b>78%</b>	<b>79%</b>	<b>76%</b>



	Jan	Feb	Mar	Apr	May	Jun	Jul	Aug	Sep	Oct	Nov	Dec
# CO2	83	85	83	83	83	78	85	87	85	84	85	89
# CO2 >= 23	66	69	65	64	52	60	61	68	59	67	71	71
Pop. Mean =	24	25	25	25	24	25	24	25	24	24	25	24
Std. Deviation =	3.23	3.08	3.01	3.06	2.88	3.13	3.22	2.80	3.08	3.12	2.66	3.00
Network Mean =												
Natl. Mean =												
<b>% CO2 &gt;= 23</b>	<b>80%</b>	<b>81%</b>	<b>78%</b>	<b>77%</b>	<b>63%</b>	<b>77%</b>	<b>72%</b>	<b>78%</b>	<b>69%</b>	<b>80%</b>	<b>84%</b>	<b>80%</b>

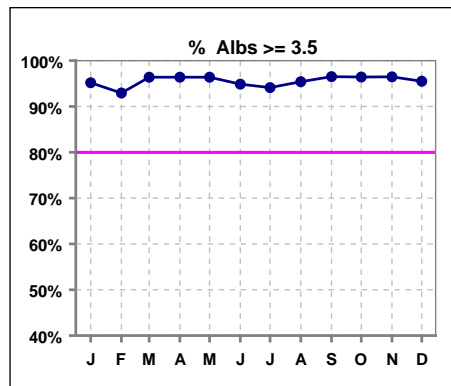


\*Methodology: a) Monthly values based on patient's monthly average of all values present for the month; b) Quarter values are average of all values for quarter; c) Values not averaged use last value present at months end.

\*Albumin values use BCG method - as of July 2001

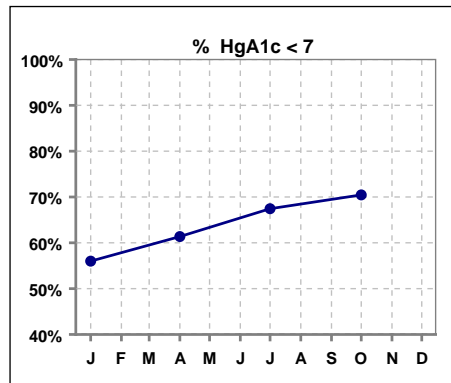
**II. NUTRITION**

	Jan	Feb	Mar	Apr	May	Jun	Jul	Aug	Sep	Oct	Nov	Dec
# Albumin	83	85	83	83	83	78	85	87	86	84	85	89
# Albumin >= 3.5	79	79	80	80	80	74	80	83	83	81	82	85
Pop. Mean =	4.0	3.9	4.0	4.0	4.0	4.0	4.0	4.0	4.0	4.0	4.1	4.0
Std. Deviation =	0.33	0.31	0.35	0.33	0.33	0.36	0.30	0.31	0.27	0.30	0.36	0.30
Network Mean =	3.4	3.4	3.4	3.4	3.4	3.4	3.4	3.4	3.4	3.4	3.4	3.4
Natl. Mean =	3.8	3.8	3.8	3.8	3.8	3.8	3.8	3.8	3.8	3.8	3.8	3.8
<b>% Alb &gt;= 3.5</b>	<b>95%</b>	<b>93%</b>	<b>96%</b>	<b>96%</b>	<b>96%</b>	<b>95%</b>	<b>94%</b>	<b>95%</b>	<b>97%</b>	<b>96%</b>	<b>96%</b>	<b>96%</b>
% Alb >= 3.0						97%	100%	100%	100%	99%	99%	99%
% Alb >= 4.0	61%	53%	59%	46%	57%	59%	58%	57%	55%	65%	72%	60%
*Natl % >= 3.5-BCG	81%	81%	81%	81%	81%	81%	81%	81%	81%	81%	81%	81%
*Natl. % >= 4.0-BCG	39%	39%	39%	39%	39%	39%	39%	39%	39%	39%	39%	39%



\*Figures for 2004

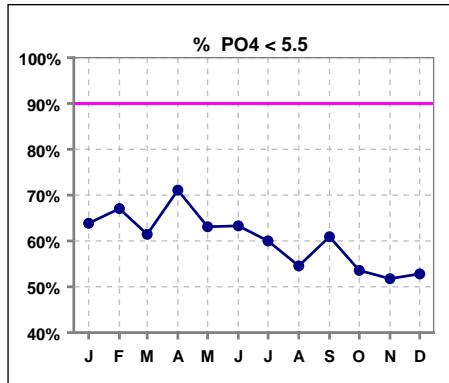
	Jan	Feb	Mar	Apr	May	Jun	Jul	Aug	Sep	Oct	Nov	Dec
# HgA1c	50			44			43			44		
# HgA1c < 7	28			27			29			31		
Pop. Mean =	6.8			6.6			6.7			6.8		
Std. Deviation =	1.68			1.30			1.79			1.78		
Network Mean =												
Natl. Mean =												
<b>% HgA1c &lt; 7</b>	<b>56%</b>			<b>61%</b>			<b>67%</b>			<b>70%</b>		



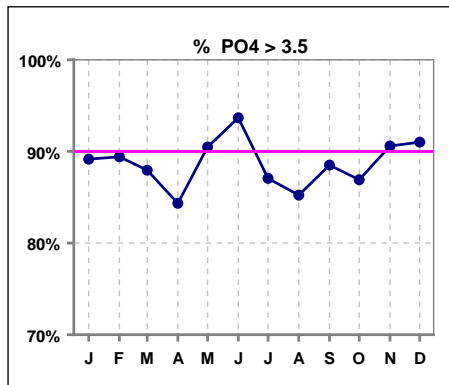
\*Methodology: a) Monthly values based on patient's monthly average of all values present for the month; b) Quarter values are average of all values for quarter; c) Values not averaged use last value present at months end.

**III. OSTEODYSTROPHY**

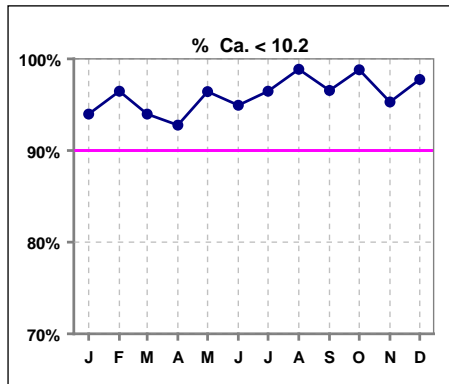
	Jan	Feb	Mar	Apr	May	Jun	Jul	Aug	Sep	Oct	Nov	Dec
# PO4	83	85	83	83	84	79	85	88	87	84	85	89
# PO4 < 5.5	53	57	51	59	53	50	51	48	53	45	44	47
Pop. Mean =	5.3	5.2	5.2	5.0	5.1	5.2	5.2	5.2	5.3	5.4	5.5	5.3
Std. Deviation =	1.59	1.42	1.50	1.29	1.26	1.26	1.64	1.51	1.56	1.54	1.68	1.34
Network Mean =												
Natl. Mean =												
<b>% PO4 &lt; 5.5</b>	<b>64%</b>	<b>67%</b>	<b>61%</b>	<b>71%</b>	<b>63%</b>	<b>63%</b>	<b>60%</b>	<b>55%</b>	<b>61%</b>	<b>54%</b>	<b>52%</b>	<b>53%</b>



	Jan	Feb	Mar	Apr	May	Jun	Jul	Aug	Sep	Oct	Nov	Dec
# PO4	83	85	83	83	84	79	85	88	87	84	85	89
# PO4 > 3.5	74	76	73	70	76	74	74	75	77	73	77	81
Pop. Mean =	5.3	5.2	5.2	5.0	5.1	5.2	5.2	5.2	5.3	5.4	5.5	5.3
Std. Deviation =	1.59	1.42	1.50	1.29	1.26	1.26	1.64	1.51	1.56	1.54	1.68	1.34
Network Mean =												
Natl. Mean =												
<b>% PO4 &gt; 3.5</b>	<b>89%</b>	<b>89%</b>	<b>88%</b>	<b>84%</b>	<b>90%</b>	<b>94%</b>	<b>87%</b>	<b>85%</b>	<b>89%</b>	<b>87%</b>	<b>91%</b>	<b>91%</b>



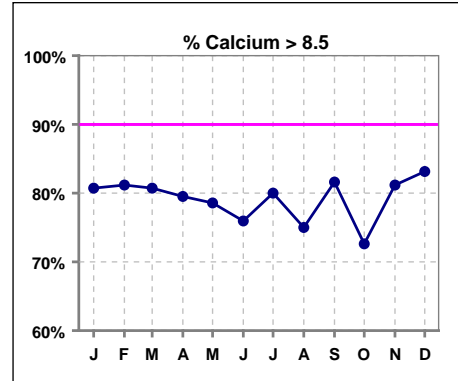
	Jan	Feb	Mar	Apr	May	Jun	Jul	Aug	Sep	Oct	Nov	Dec
# Calcium	83	85	83	83	84	79	85	88	87	84	85	89
# Calcium < 10.2	78	82	78	77	81	75	82	87	84	83	81	87
Pop. Mean =	9.1	9.0	9.1	9.1	9.0	9.0	9.0	8.9	8.9	8.9	9.2	9.2
Std. Deviation =	0.72	0.69	0.64	0.71	0.66	0.70	0.63	0.62	0.67	0.74	0.71	0.63
Network Mean =												
Natl. Mean =												
<b>% Ca &lt; 10.2</b>	<b>94%</b>	<b>96%</b>	<b>94%</b>	<b>93%</b>	<b>96%</b>	<b>95%</b>	<b>96%</b>	<b>99%</b>	<b>97%</b>	<b>99%</b>	<b>95%</b>	<b>98%</b>



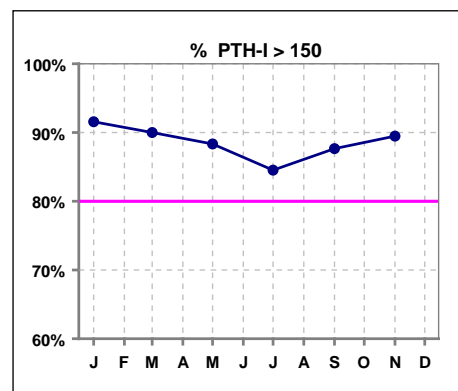
\*Methodology: a) Monthly values based on patient's monthly average of all values present for the month; b) Quarter values are average of all values for quarter; c) Values not averaged use last value present at months end.

**III. OSTEODYSTROPHY - CONT.**

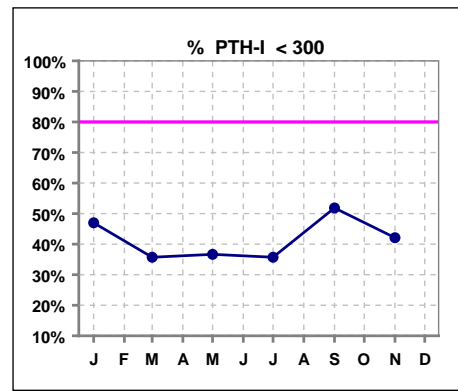
	Jan	Feb	Mar	Apr	May	Jun	Jul	Aug	Sep	Oct	Nov	Dec
# Calcium	83	85	83	83	84	79	85	88	87	84	85	89
# Calcium > 8.5	67	69	67	66	66	60	68	66	71	61	69	74
Pop. Mean =	9.1	9.0	9.1	9.1	9.0	9.0	9.0	8.9	8.9	8.9	9.2	9.2
Std. Deviation =	0.72	0.69	0.64	0.71	0.66	0.70	0.63	0.62	0.67	0.74	0.71	0.63
Network Mean =												
Natl. Mean =												
<b>% Calcium &gt; 8.5</b>	<b>81%</b>	<b>81%</b>	<b>81%</b>	<b>80%</b>	<b>79%</b>	<b>76%</b>	<b>80%</b>	<b>75%</b>	<b>82%</b>	<b>73%</b>	<b>81%</b>	<b>83%</b>



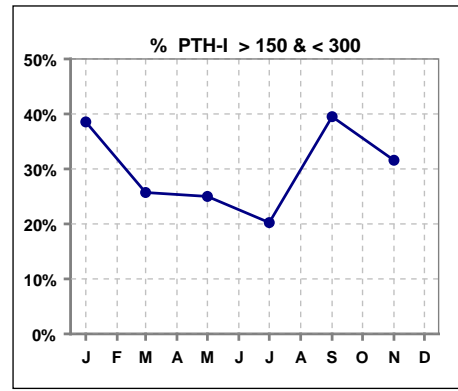
	Jan	Feb	Mar	Apr	May	Jun	Jul	Aug	Sep	Oct	Nov	Dec
# PTH-I	83		70		60		84		81		19	
# PTH-I > 150	76		63		53		71		71		17	
Pop. Mean =	458		502		524		557		416		502	
Std. Deviation =	375		402		484		505		298		405	
Network Mean =												
Natl. Mean =												
<b>% PTH-I &gt; 150</b>	<b>92%</b>		<b>90%</b>		<b>88%</b>		<b>85%</b>		<b>88%</b>		<b>89%</b>	



	Jan	Feb	Mar	Apr	May	Jun	Jul	Aug	Sep	Oct	Nov	Dec
# PTH-I	83		70		60		84		81		19	
# PTH-I < 300	39		25		22		30		42		8	
Pop. Mean =	458		502		524		557		416		502	
Std. Deviation =	375		402		484		505		298		405	
Network Mean =												
Natl. Mean =												
<b>% PTH-I &lt; 300</b>	<b>47%</b>		<b>36%</b>		<b>37%</b>		<b>36%</b>		<b>52%</b>		<b>42%</b>	



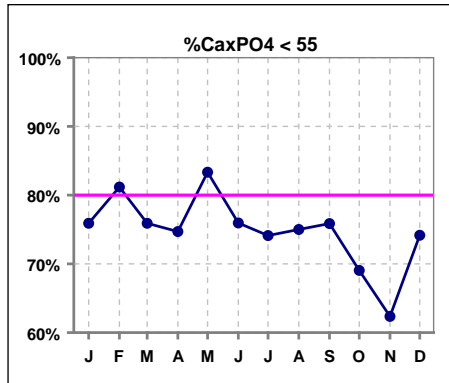
	Jan	Feb	Mar	Apr	May	Jun	Jul	Aug	Sep	Oct	Nov	Dec
# PTH-I	83		70		60		84		81		19	
# PTH-I > 150 & < 300	32		18		15		17		32		6	
Pop. Mean =	458		502		524		557		416		502	
Std. Deviation =	375		402		484		505		298		405	
Network Mean =												
Natl. Mean =												
<b>% PTH-I &gt; 150 &amp; &lt; 300</b>	<b>39%</b>		<b>26%</b>		<b>25%</b>		<b>20%</b>		<b>40%</b>		<b>32%</b>	



\*Methodology: a) Monthly values based on patient's monthly average of all values present for the month; b) Quarter values are average of all values for quarter; c) Values not averaged use last value present at months end.

**III. OSTEODYSTROPHY - CONT.**

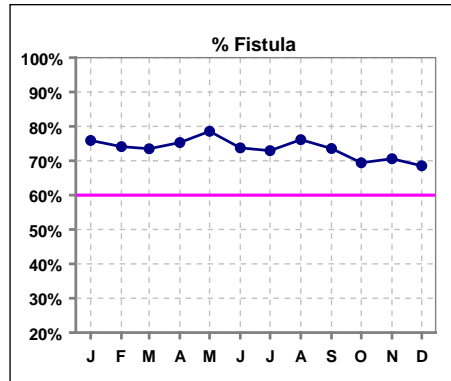
	Jan	Feb	Mar	Apr	May	Jun	Jul	Aug	Sep	Oct	Nov	Dec
# Ca x PO4	83	85	83	83	84	79	85	88	87	84	85	89
# Ca x PO4 < 55	63	69	63	62	70	60	63	66	66	58	53	66
Pop. Mean =	47.6	46.7	46.8	45.2	46.3	47.1	46.5	46.8	47.0	48.1	49.8	48.5
Std. Deviation =	13.6	12.8	12.9	11.4	10.4	11.3	14.1	13.9	13.2	13.1	14.8	12.4
Network Mean =												
Natl. Mean =												
<b>% CaxPO4 &lt; 55</b>	<b>76%</b>	<b>81%</b>	<b>76%</b>	<b>75%</b>	<b>83%</b>	<b>76%</b>	<b>74%</b>	<b>75%</b>	<b>76%</b>	<b>69%</b>	<b>62%</b>	<b>74%</b>



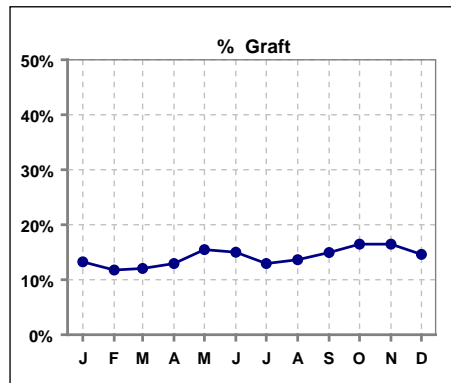
\*Methodology: a) Monthly values based on patient's monthly average of all values present for the month; b) Quarter values are average of all values for quarter; c) Values not averaged use last value present at months end.

**IV. ACCESS**

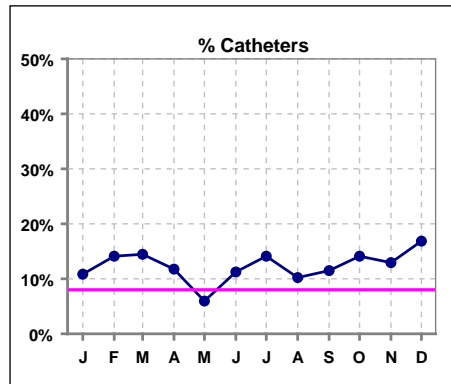
	Jan	Feb	Mar	Apr	May	Jun	Jul	Aug	Sep	Oct	Nov	Dec
# Access	83	85	83	85	84	80	85	88	87	85	85	89
# Fistula	63	63	61	64	66	59	62	67	64	59	60	61
Network % - 2004	55%	55%	55%									
Natl. % - 2004	35%	35%	35%									
Network % - 2005				58%	58%	58%	58%	58%	58%	58%	58%	58%
Natl. % - 2005				39%	39%	39%	39%	39%	39%	39%	39%	39%
<b>% Fistula</b>	<b>76%</b>	<b>74%</b>	<b>73%</b>	<b>75%</b>	<b>79%</b>	<b>74%</b>	<b>73%</b>	<b>76%</b>	<b>74%</b>	<b>69%</b>	<b>71%</b>	<b>69%</b>



	Jan	Feb	Mar	Apr	May	Jun	Jul	Aug	Sep	Oct	Nov	Dec
# Access	83	85	83	85	84	80	85	88	87	85	85	89
# Graft	11	10	10	11	13	12	11	12	13	14	14	13
Network %												
Natl. %												
<b>% Graft</b>	<b>13%</b>	<b>12%</b>	<b>12%</b>	<b>13%</b>	<b>15%</b>	<b>15%</b>	<b>13%</b>	<b>14%</b>	<b>15%</b>	<b>16%</b>	<b>16%</b>	<b>15%</b>



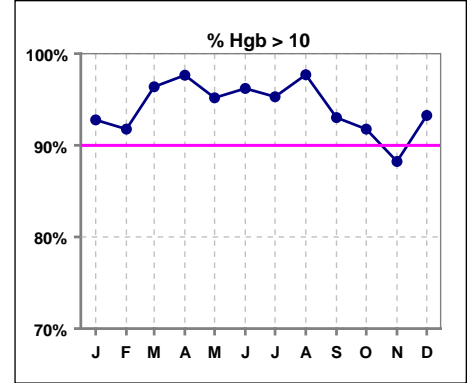
	Jan	Feb	Mar	Apr	May	Jun	Jul	Aug	Sep	Oct	Nov	Dec
# Access	83	85	83	85	84	80	85	88	87	85	85	89
# Catheters	9	12	12	10	5	9	12	9	10	12	11	15
Network %												
Natl. % - 2004	27%	27%	27%	27%	27%	27%	27%	27%	27%	27%	27%	27%
<b>% Catheters</b>	<b>11%</b>	<b>14%</b>	<b>14%</b>	<b>12%</b>	<b>6%</b>	<b>11%</b>	<b>14%</b>	<b>10%</b>	<b>11%</b>	<b>14%</b>	<b>13%</b>	<b>17%</b>



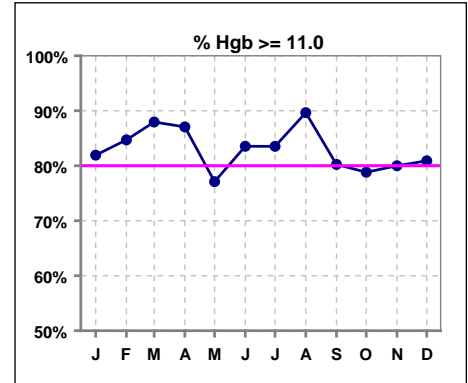
\*Methodology: a) Monthly values based on patient's monthly average of all values present for the month; b) Quarter values are average of all values for quarter; c) Values not averaged use last value present at months end.

**V. ANEMIA**

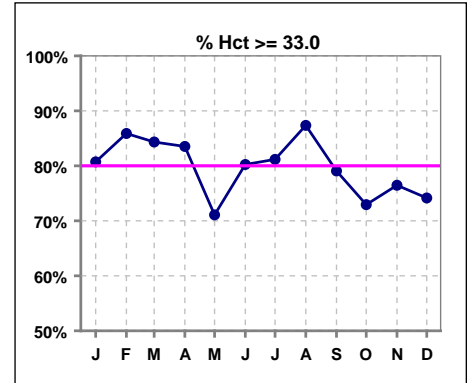
	Jan	Feb	Mar	Apr	May	Jun	Jul	Aug	Sep	Oct	Nov	Dec
# Hgb	83	85	83	85	83	79	85	87	86	85	85	89
# Hgb > 10.0	77	78	80	83	79	76	81	85	80	78	75	83
Pop. Mean =	12.3	12.4	12.4	12.3	12.0	12.2	12.2	12.2	12.0	12.0	12.1	11.9
Std. Deviation =	1.3	1.3	1.3	1.1	1.2	1.2	1.2	1.2	1.3	1.4	1.4	1.2
Network Mean =	11.8	11.8	11.8	11.8	11.8	11.8	11.8	11.8	11.8	11.8	11.8	11.8
Natl. Mean =												
<b>% Hgb &gt; 10.0</b>	<b>93%</b>	<b>92%</b>	<b>96%</b>	<b>98%</b>	<b>95%</b>	<b>96%</b>	<b>95%</b>	<b>98%</b>	<b>93%</b>	<b>92%</b>	<b>88%</b>	<b>93%</b>



	Jan	Feb	Mar	Apr	May	Jun	Jul	Aug	Sep	Oct	Nov	Dec
# Hgb	83	85	83	85	83	79	85	87	86	85	85	89
# Hgb >= 11.0	68	72	73	74	64	66	71	78	69	67	68	72
Pop. Mean =	12.3	12.4	12.4	12.3	12.0	12.2	12.2	12.2	12.0	12.0	12.1	11.9
Std. Deviation =	1.3	1.3	1.3	1.1	1.2	1.2	1.2	1.2	1.3	1.4	1.4	1.2
Network Mean =	11.8	11.8	11.8	11.8	11.8	11.8	11.8	11.8	11.8	11.8	11.8	11.8
Natl. Mean =												
<b>% Hgb &gt;= 11.0</b>	<b>82%</b>	<b>85%</b>	<b>88%</b>	<b>87%</b>	<b>77%</b>	<b>84%</b>	<b>84%</b>	<b>90%</b>	<b>80%</b>	<b>79%</b>	<b>80%</b>	<b>81%</b>
<b>% Hgb &lt;= 11.0</b>						<b>18%</b>	<b>18%</b>	<b>10%</b>	<b>21%</b>	<b>21%</b>	<b>20%</b>	<b>20%</b>
<b>% Natl. &gt;= 11 2004</b>	<b>80%</b>	<b>80%</b>	<b>80%</b>	<b>80%</b>	<b>80%</b>	<b>80%</b>	<b>80%</b>	<b>80%</b>	<b>80%</b>	<b>80%</b>	<b>80%</b>	<b>80%</b>



	Jan	Feb	Mar	Apr	May	Jun	Jul	Aug	Sep	Oct	Nov	Dec
# Hct	83	85	83	85	83	81	85	87	86	85	85	89
# Hct >= 33.0	67	73	70	71	59	65	69	76	68	62	65	66
Pop. Mean =	37	37	37	37	35	36	37	36	36	36	36	35
Std. Deviation =	3.96	4.34	3.99	3.66	3.73	3.84	3.57	3.60	3.97	4.16	4.23	3.69
Network Mean =												
Natl. Mean =												
<b>% Hct &gt;= 33.0</b>	<b>81%</b>	<b>86%</b>	<b>84%</b>	<b>84%</b>	<b>71%</b>	<b>80%</b>	<b>81%</b>	<b>87%</b>	<b>79%</b>	<b>73%</b>	<b>76%</b>	<b>74%</b>
<b>*% Network &gt;= 33</b>	<b>91%</b>	<b>91%</b>	<b>91%</b>									
<b>*% Natl. &gt;= 33</b>	<b>89%</b>	<b>89%</b>	<b>89%</b>									
<b>*Figures for 2004</b>												
<b>**% Network &gt;= 33</b>				<b>94%</b>	<b>94%</b>	<b>94%</b>	<b>94%</b>	<b>94%</b>	<b>94%</b>	<b>94%</b>	<b>94%</b>	<b>94%</b>
<b>**% Natl. &gt;= 33</b>				<b>92%</b>	<b>92%</b>	<b>92%</b>	<b>92%</b>	<b>92%</b>	<b>92%</b>	<b>92%</b>	<b>92%</b>	<b>92%</b>
<b>**Figures for 2005</b>												



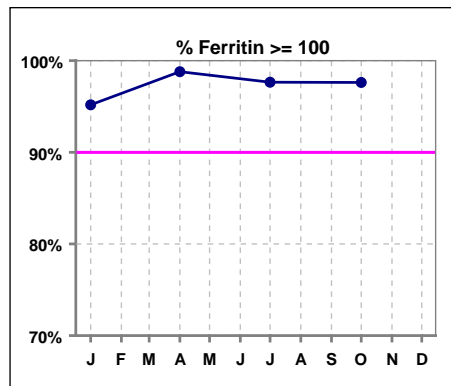
\*Methodology: a) Monthly values based on patient's monthly average of all values present for the month; b) Quarter values are average of all values for quarter; c) Values not averaged use last value present at months end.



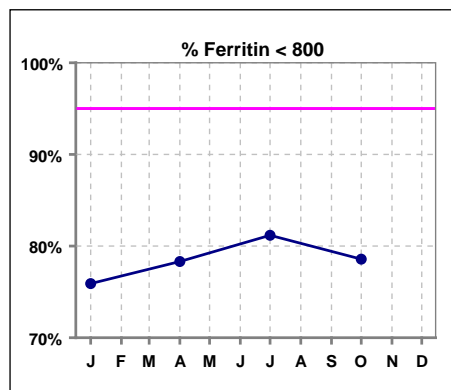
**V. ANEMIA - CONT.**

**Iron Profile**

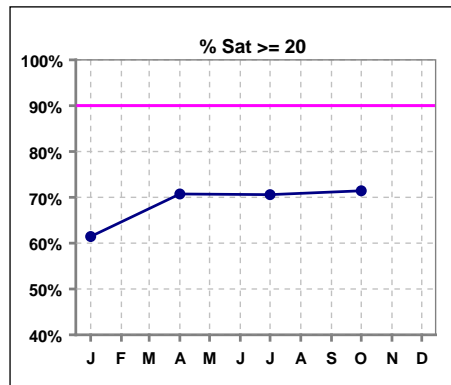
	Jan	Feb	Mar	Apr	May	Jun	Jul	Aug	Sep	Oct	Nov	Dec
# Ferritin	83			83			85			84		
# Ferritin >= 100	79			82			83			82		
Pop. Mean =	587			594			551			604		
Std. Deviation =	361			373			296			424		
Network Mean =												
Natl. Mean =												
<b>% Ferritin &gt;= 100</b>	<b>95%</b>			<b>99%</b>			<b>98%</b>			<b>98%</b>		
<b>%Natl. &gt;=100 2004</b>	<b>94%</b>			<b>94%</b>			<b>94%</b>			<b>94%</b>		



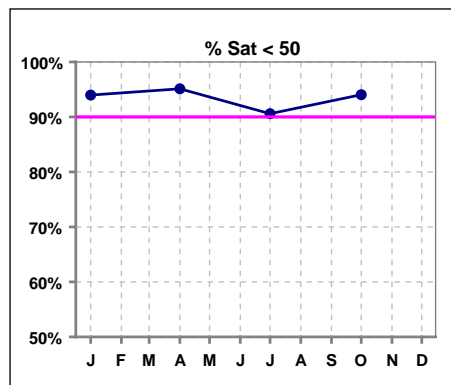
	Jan	Feb	Mar	Apr	May	Jun	Jul	Aug	Sep	Oct	Nov	Dec
# Ferritin	83			83			85			84		
# Ferritin < 800	63			65			69			66		
Pop. Mean =	587			594			551			604		
Std. Deviation =	361			373			296			424		
Network Mean =												
Natl. Mean =												
<b>% Ferritin &lt; 800</b>	<b>76%</b>			<b>78%</b>			<b>81%</b>			<b>79%</b>		



	Jan	Feb	Mar	Apr	May	Jun	Jul	Aug	Sep	Oct	Nov	Dec
# % Sat	83			82			85			84		
# % Sat >= 20	51			58			60			60		
Pop. Mean =	26			27			29			27		
Std. Deviation =	15			15			16			14		
Network Mean =												
Natl. Mean =												
<b>% Sat% &gt;= 20</b>	<b>61%</b>			<b>71%</b>			<b>71%</b>			<b>71%</b>		
<b>%Natl. &gt;=20 2004</b>	<b>81%</b>			<b>81%</b>			<b>81%</b>			<b>81%</b>		



	Jan	Feb	Mar	Apr	May	Jun	Jul	Aug	Sep	Oct	Nov	Dec
# % Sat	83			82			85			84		
# % Sat < 50	78			78			77			79		
Pop. Mean =	26			27			29			27		
Std. Deviation =	15			15			16			14		
Network Mean =												
Natl. Mean =												
<b>% Sat% &lt; 50</b>	<b>94%</b>			<b>95%</b>			<b>91%</b>			<b>94%</b>		



\*Methodology: a) Monthly values based on patient's monthly average of all values present for the month; b) Quarter values are average of all values for quarter; c) Values not averaged use last value present at months end.