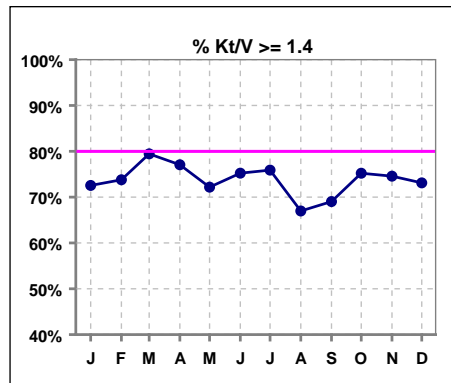


I. ADEQUACY OF DIALYSIS

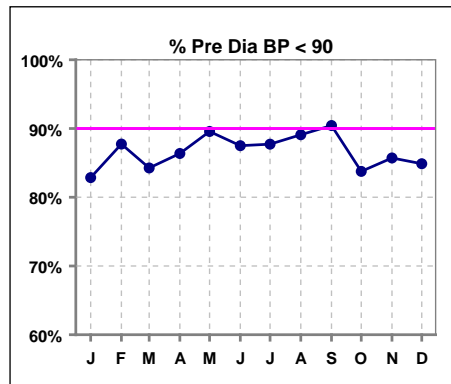
	Jan	Feb	Mar	Apr	May	Jun	Jul	Aug	Sep	Oct	Nov	Dec
# Kt/V	102	103	107	109	115	109	112	109	113	117	118	119
# Kt/V >= 1.4	74	76	85	84	83	82	85	73	78	88	88	87
Pop. Mean =	1.55	1.54	1.54	1.59	1.51	1.57	1.55	1.52	1.58	1.57	1.53	1.56
Std. Deviation =	0.28	0.29	0.33	0.43	0.31	0.33	0.32	0.27	0.31	0.29	0.27	0.27
Network Mean =	1.59	1.59	1.59	1.59	1.59	1.59	1.59	1.59	1.59	1.59	1.59	1.59
Natl. Mean =												
% Kt/V >= 1.4	73%	74%	79%	77%	72%	75%	76%	67%	69%	75%	75%	73%
**% Kt/V >= 1.2	89%	88%	90%	88%	86%	92%	89%	93%	92%	93%	86%	93%

** As of Apr. '04

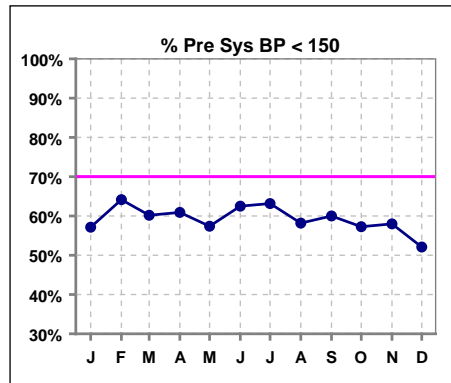


Blood Pressure Control (Pre)

	Jan	Feb	Mar	Apr	May	Jun	Jul	Aug	Sep	Oct	Nov	Dec
# Pre Dia BP	105	106	108	110	115	112	114	110	115	117	119	119
# Pre Dia BP < 90	87	93	91	95	103	98	100	98	104	98	102	101
Pop. Mean =	76	74	75	75	74	74	74	75	75	76	76	76
Std. Deviation =	15.3	12.8	13.7	12.5	12.3	12.0	13.3	13.0	14.4	14.4	13.5	13.7
Network Mean =												
Natl. Mean =												
% Pre Dia BP < 90	83%	88%	84%	86%	90%	88%	88%	89%	90%	84%	86%	85%



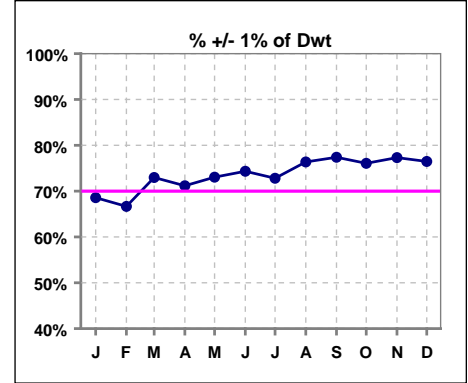
	Jan	Feb	Mar	Apr	May	Jun	Jul	Aug	Sep	Oct	Nov	Dec
# Pre Sys BP	105	106	108	110	115	112	114	110	115	117	119	119
# Pre Sys BP < 150	60	68	65	67	66	70	72	64	69	67	69	62
Pop. Mean =	144	143	144	146	145	143	143	145	145	147	147	148
Std. Deviation =	22.9	21.6	21.5	20.0	21.5	21.2	22.1	22.6	23.0	21.9	22.4	21.7
Network Mean =												
Natl. Mean =												
% Pre Sys BP < 150	57%	64%	60%	61%	57%	63%	63%	58%	60%	57%	58%	52%



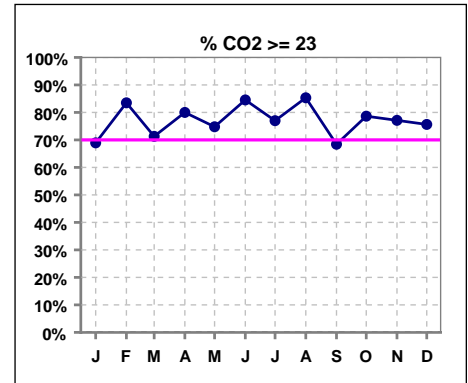
*Methodology: a) Monthly values based on patient's monthly average of all values present for the month; b) Quarter values are average of all values for quarter; c) Values not averaged use last value present at months end.

I. ADEQUACY OF DIALYSIS - CONT.

	Jan	Feb	Mar	Apr	May	Jun	Jul	Aug	Sep	Oct	Nov	Dec
# Post/Dwt	105	108	111	111	115	113	114	110	115	117	119	119
# +/- 1% of Dwt	72	72	81	79	84	84	83	84	89	89	92	91
% +/- 1 % of Dwt	69%	67%	73%	71%	73%	74%	73%	76%	77%	76%	77%	76%



	Jan	Feb	Mar	Apr	May	Jun	Jul	Aug	Sep	Oct	Nov	Dec
# CO2	103	103	108	110	115	110	113	109	114	117	118	119
# CO2 >= 23	71	86	77	88	86	93	87	93	78	92	91	90
Pop. Mean =	24	25	24	24	24	25	25	26	24	24	24	24
Std. Deviation =	3.53	2.78	3.01	3.08	3.14	2.62	2.98	2.72	3.13	2.93	2.99	2.91
Network Mean =												
Natl. Mean =												
% CO2 >= 23	69%	83%	71%	80%	75%	85%	77%	85%	68%	79%	77%	76%

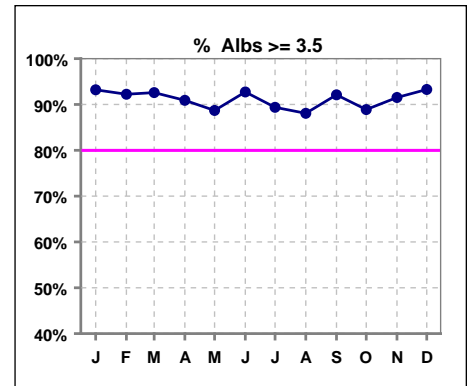


*Methodology: a) Monthly values based on patient's monthly average of all values present for the month; b) Quarter values are average of all values for quarter; c) Values not averaged use last value present at months end.

*Albumin values use BCG method - as of July 2001

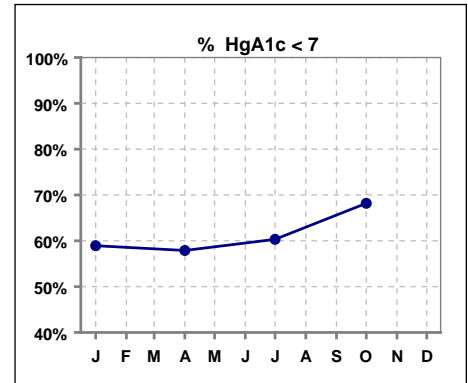
II. NUTRITION

	Jan	Feb	Mar	Apr	May	Jun	Jul	Aug	Sep	Oct	Nov	Dec
# Albumin	103	103	108	110	115	110	113	109	114	117	118	119
# Albumin >= 3.5	96	95	100	100	102	102	101	96	105	104	108	111
Pop. Mean =	4.0	4.0	4.0	4.0	4.0	4.0	3.9	3.9	3.9	3.9	4.0	3.9
Std. Deviation =	0.37	0.36	0.38	0.35	0.40	0.39	0.35	0.36	0.31	0.35	0.39	0.33
Network Mean =	3.4	3.4	3.4	3.4	3.4	3.4	3.4	3.4	3.4	3.4	3.4	3.4
Natl. Mean =	3.8	3.8	3.8	3.8	3.8	3.8	3.8	3.8	3.8	3.8	3.8	3.8
% Alb >= 3.5	93%	92%	93%	91%	89%	93%	89%	88%	92%	89%	92%	93%
% Alb >= 3.0						98%	99%	100%	100%	99%	99%	99%
% Alb >= 4.0	59%	59%	59%	56%	62%	57%	55%	51%	53%	49%	62%	47%
*Natl % >= 3.5-BCG	81%	81%	81%	81%	81%	81%	81%	81%	81%	81%	81%	81%
*Natl. % >= 4.0-BCG	39%	39%	39%	39%	39%	39%	39%	39%	39%	39%	39%	39%



*Figures for 2004

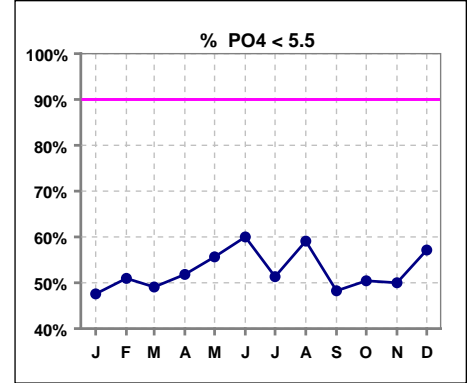
	Jan	Feb	Mar	Apr	May	Jun	Jul	Aug	Sep	Oct	Nov	Dec
# HgA1c	56			57			63			66		
# HgA1c < 7	33			33			38			45		
Pop. Mean =	6.7			6.7			6.9			6.6		
Std. Deviation =	1.59			1.45			1.77			1.48		
Network Mean =												
Natl. Mean =												
% HgA1c < 7	59%			58%			60%			68%		



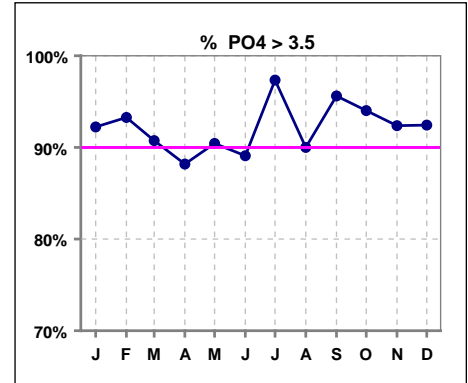
*Methodology: a) Monthly values based on patient's monthly average of all values present for the month; b) Quarter values are average of all values for quarter; c) Values not averaged use last value present at months end.

III. OSTEODYSTROPHY

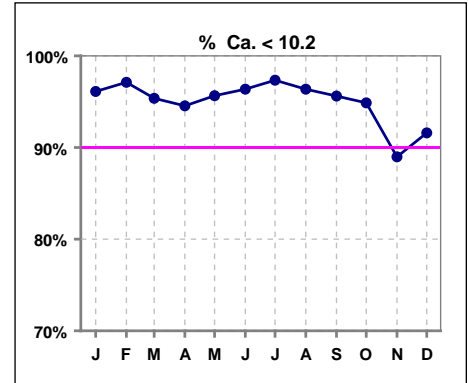
	Jan	Feb	Mar	Apr	May	Jun	Jul	Aug	Sep	Oct	Nov	Dec
# PO4	103	104	108	110	115	110	113	110	114	117	118	119
# PO4 < 5.5	49	53	53	57	64	66	58	65	55	59	59	68
Pop. Mean =	5.8	5.7	5.7	5.5	5.4	5.2	5.6	5.3	5.7	5.7	5.7	5.4
Std. Deviation =	1.84	1.85	2.03	1.73	1.52	1.60	1.64	1.57	1.58	1.63	1.70	1.60
Network Mean =												
Natl. Mean =												
% PO4 < 5.5	48%	51%	49%	52%	56%	60%	51%	59%	48%	50%	50%	57%



	Jan	Feb	Mar	Apr	May	Jun	Jul	Aug	Sep	Oct	Nov	Dec
# PO4	103	104	108	110	115	110	113	110	114	117	118	119
# PO4 > 3.5	95	97	98	97	104	98	110	99	109	110	109	110
Pop. Mean =	5.8	5.7	5.7	5.5	5.4	5.2	5.6	5.3	5.7	5.7	5.7	5.4
Std. Deviation =	1.84	1.85	2.03	1.73	1.52	1.60	1.64	1.57	1.58	1.63	1.70	1.60
Network Mean =												
Natl. Mean =												
% PO4 > 3.5	92%	93%	91%	88%	90%	89%	97%	90%	96%	94%	92%	92%



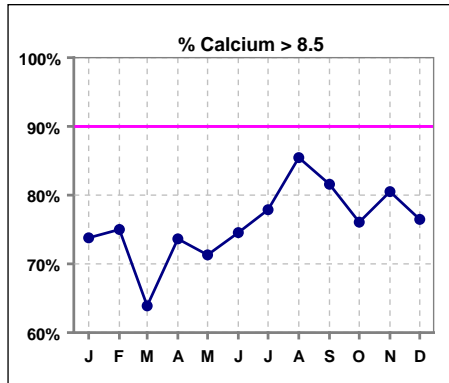
	Jan	Feb	Mar	Apr	May	Jun	Jul	Aug	Sep	Oct	Nov	Dec
# Calcium	103	104	108	110	115	110	113	110	114	117	118	119
# Calcium < 10.2	99	101	103	104	110	106	110	106	109	111	105	109
Pop. Mean =	9.0	9.0	8.8	8.9	8.9	9.0	9.0	9.1	9.1	9.0	9.1	9.1
Std. Deviation =	0.73	0.68	0.85	0.75	0.74	0.70	0.63	0.63	0.65	0.70	0.76	0.78
Network Mean =												
Natl. Mean =												
% Ca < 10.2	96%	97%	95%	95%	96%	96%	97%	96%	96%	95%	89%	92%



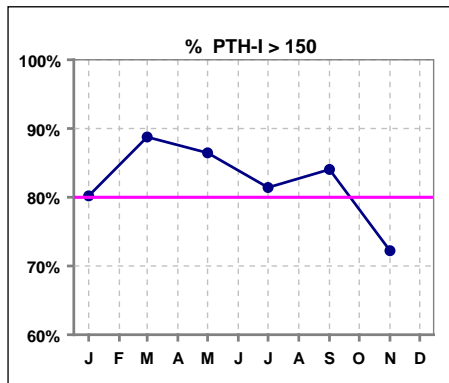
*Methodology: a) Monthly values based on patient's monthly average of all values present for the month; b) Quarter values are average of all values for quarter; c) Values not averaged use last value present at months end.

III. OSTEODYSTROPHY - CONT.

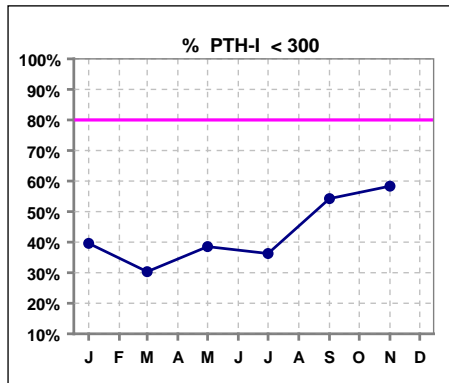
	Jan	Feb	Mar	Apr	May	Jun	Jul	Aug	Sep	Oct	Nov	Dec
# Calcium	103	104	108	110	115	110	113	110	114	117	118	119
# Calcium > 8.5	76	78	69	81	82	82	88	94	93	89	95	91
Pop. Mean =	9.0	9.0	8.8	8.9	8.9	9.0	9.0	9.1	9.1	9.0	9.1	9.1
Std. Deviation =	0.73	0.68	0.85	0.75	0.74	0.70	0.63	0.63	0.65	0.70	0.76	0.78
Network Mean =												
Natl. Mean =												
% Calcium > 8.5	74%	75%	64%	74%	71%	75%	78%	85%	82%	76%	81%	76%



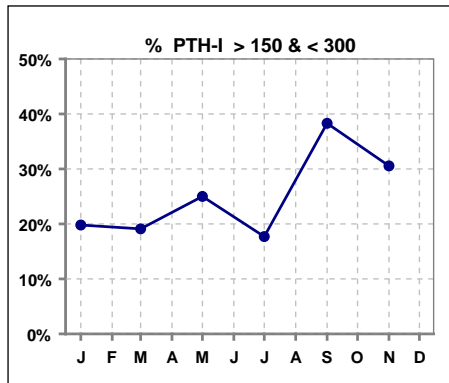
	Jan	Feb	Mar	Apr	May	Jun	Jul	Aug	Sep	Oct	Nov	Dec
# PTH-I	101		89		96		113		94		36	
# PTH-I > 150	81		79		83		92		79		26	
Pop. Mean =	594		599		572		573		504		297	
Std. Deviation =	746		554		596		761		692		186	
Network Mean =												
Natl. Mean =												
% PTH-I > 150	80%		89%		86%		81%		84%		72%	



	Jan	Feb	Mar	Apr	May	Jun	Jul	Aug	Sep	Oct	Nov	Dec
# PTH-I	101		89		96		113		94		36	
# PTH-I < 300	40		27		37		41		51		21	
Pop. Mean =	594		599		572		573		504		297	
Std. Deviation =	746		554		596		761		692		186	
Network Mean =												
Natl. Mean =												
% PTH-I < 300	40%		30%		39%		36%		54%		58%	



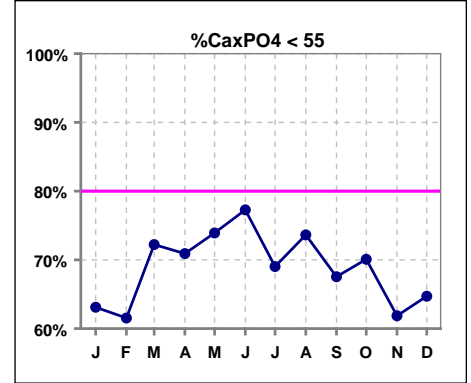
	Jan	Feb	Mar	Apr	May	Jun	Jul	Aug	Sep	Oct	Nov	Dec
# PTH-I	101		89		96		113		94		36	
# PTH-I >150 & <300	20		17		24		20		36		11	
Pop. Mean =	594		599		572		573		504		297	
Std. Deviation =	746		554		596		761		692		186	
Network Mean =												
Natl. Mean =												
% PTH-I >150 & <300	20%		19%		25%		18%		38%		31%	



*Methodology: a) Monthly values based on patient's monthly average of all values present for the month; b) Quarter values are average of all values for quarter; c) Values not averaged use last value present at months end.

III. OSTEODYSTROPHY - CONT.

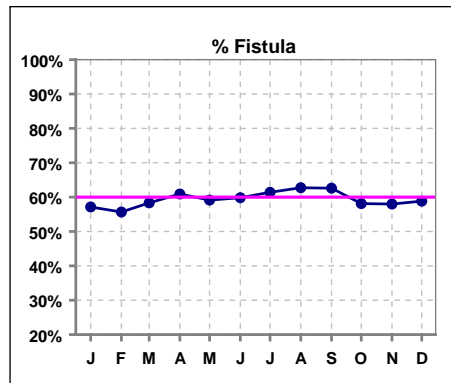
	Jan	Feb	Mar	Apr	May	Jun	Jul	Aug	Sep	Oct	Nov	Dec
# Ca x PO4	103	104	108	110	115	110	113	110	114	117	118	119
# Ca x PO4 < 55	65	64	78	78	85	85	78	81	77	82	73	77
Pop. Mean =	51.6	50.4	50.1	49.1	48.0	46.3	50.1	48.3	51.9	51.1	51.3	49.6
Std. Deviation =	15.5	16.2	16.9	15.0	13.8	14.3	14.2	14.4	14.1	14.6	14.9	14.3
Network Mean =												
Natl. Mean =												
% CaxPO4 < 55	63%	62%	72%	71%	74%	77%	69%	74%	68%	70%	62%	65%



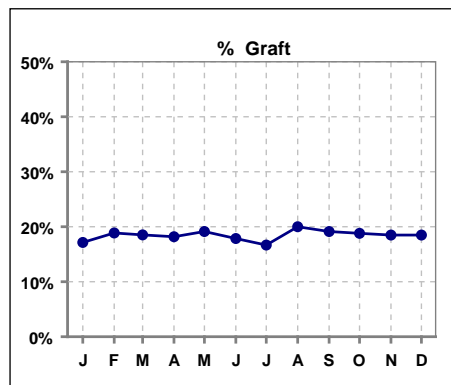
*Methodology: a) Monthly values based on patient's monthly average of all values present for the month; b) Quarter values are average of all values for quarter; c) Values not averaged use last value present at months end.

IV. ACCESS

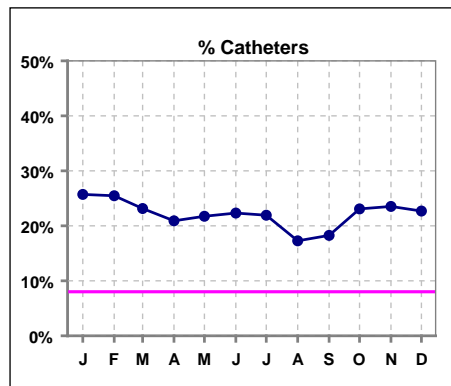
	Jan	Feb	Mar	Apr	May	Jun	Jul	Aug	Sep	Oct	Nov	Dec
# Access	105	106	108	110	115	112	114	110	115	117	119	119
# Fistula	60	59	63	67	68	67	70	69	72	68	69	70
Network % - 2004	55%	55%	55%									
Natl. % - 2004	35%	35%	35%									
Network % - 2005				58%	58%	58%	58%	58%	58%	58%	58%	58%
Natl. % - 2005				39%	39%	39%	39%	39%	39%	39%	39%	39%
% Fistula	57%	56%	58%	61%	59%	60%	61%	63%	63%	58%	58%	59%



	Jan	Feb	Mar	Apr	May	Jun	Jul	Aug	Sep	Oct	Nov	Dec
# Access	105	106	108	110	115	112	114	110	115	117	119	119
# Graft	18	20	20	20	22	20	19	22	22	22	22	22
Network %												
Natl. %												
% Graft	17%	19%	19%	18%	19%	18%	17%	20%	19%	19%	18%	18%



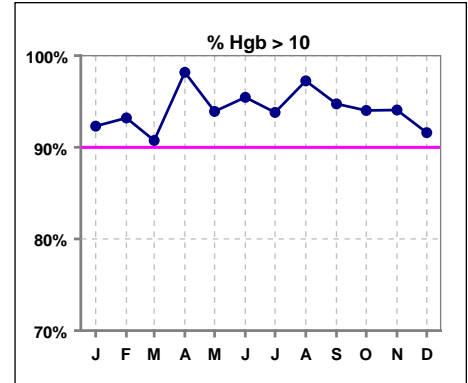
	Jan	Feb	Mar	Apr	May	Jun	Jul	Aug	Sep	Oct	Nov	Dec
# Access	105	106	108	110	115	112	114	110	115	117	119	119
# Catheters	27	27	25	23	25	25	25	19	21	27	28	27
Network %												
Natl. % - 2004	27%	27%	27%	27%	27%	27%	27%	27%	27%	27%	27%	27%
% Catheters	26%	25%	23%	21%	22%	22%	22%	17%	18%	23%	24%	23%



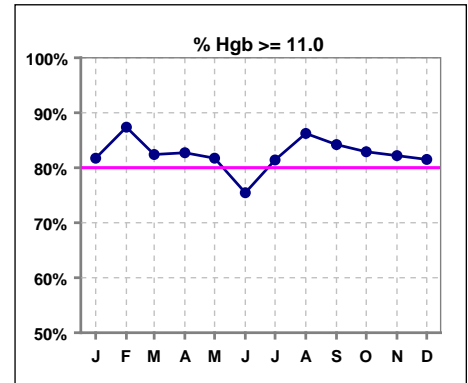
*Methodology: a) Monthly values based on patient's monthly average of all values present for the month; b) Quarter values are average of all values for quarter; c) Values not averaged use last value present at months end.

V. ANEMIA

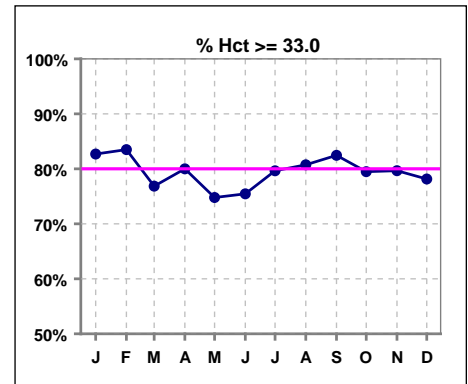
	Jan	Feb	Mar	Apr	May	Jun	Jul	Aug	Sep	Oct	Nov	Dec
# Hgb	104	103	108	110	115	110	113	109	114	117	118	119
# Hgb > 10.0	96	96	98	108	108	105	106	106	108	110	111	109
Pop. Mean =	12.3	12.5	12.3	12.4	12.2	12.1	12.0	12.2	12.4	12.2	12.1	11.9
Std. Deviation =	1.6	1.6	1.6	1.4	1.5	1.4	1.4	1.3	1.4	1.5	1.5	1.4
Network Mean =	11.8	11.8	11.8	11.8	11.8	11.8	11.8	11.8	11.8	11.8	11.8	11.8
Natl. Mean =												
% Hgb > 10.0	92%	93%	91%	98%	94%	95%	94%	97%	95%	94%	94%	92%



	Jan	Feb	Mar	Apr	May	Jun	Jul	Aug	Sep	Oct	Nov	Dec
# Hgb	104	103	108	110	115	110	113	109	114	117	118	119
# Hgb >= 11.0	85	90	89	91	94	83	92	94	96	97	97	97
Pop. Mean =	12.3	12.5	12.3	12.4	12.2	12.1	12.0	12.2	12.4	12.2	12.1	11.9
Std. Deviation =	1.6	1.6	1.6	1.4	1.5	1.4	1.4	1.3	1.4	1.5	1.5	1.4
Network Mean =	11.8	11.8	11.8	11.8	11.8	11.8	11.8	11.8	11.8	11.8	11.8	11.8
Natl. Mean =												
% Hgb >= 11.0	82%	87%	82%	83%	82%	75%	81%	86%	84%	83%	82%	82%
% Hgb <= 11.0						25%	19%	16%	16%	17%	19%	18%
% Natl. >= 11 2004	80%	80%	80%	80%	80%	80%	80%	80%	80%	80%	80%	80%



	Jan	Feb	Mar	Apr	May	Jun	Jul	Aug	Sep	Oct	Nov	Dec
# Hct	104	103	108	110	115	110	113	109	114	117	118	119
# Hct >= 33.0	86	86	83	88	86	83	90	88	94	93	94	93
Pop. Mean =	37	37	37	36	36	36	36	36	37	37	36	35
Std. Deviation =	4.93	5.06	4.84	4.16	4.61	4.31	4.41	3.78	4.22	4.59	4.52	4.06
Network Mean =												
Natl. Mean =												
% Hct >= 33.0	83%	83%	77%	80%	75%	75%	80%	81%	82%	79%	80%	78%
*% Network >= 33	91%	91%	91%									
*% Natl. >= 33	89%	89%	89%									
*Figures for 2004												
**% Network >= 33				94%	94%	94%	94%	94%	94%	94%	94%	94%
**% Natl. >= 33				92%	92%	92%	92%	92%	92%	92%	92%	92%



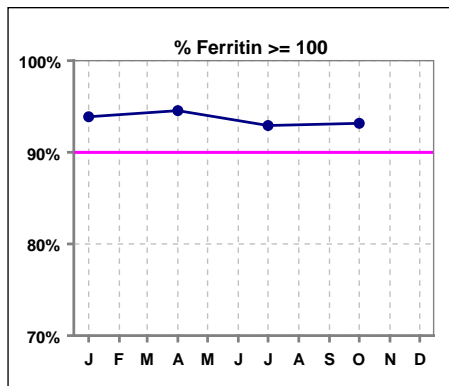
**Figures for 2005

*Methodology: a) Monthly values based on patient's monthly average of all values present for the month; b) Quarter values are average of all values for quarter; c) Values not averaged use last value present at months end.

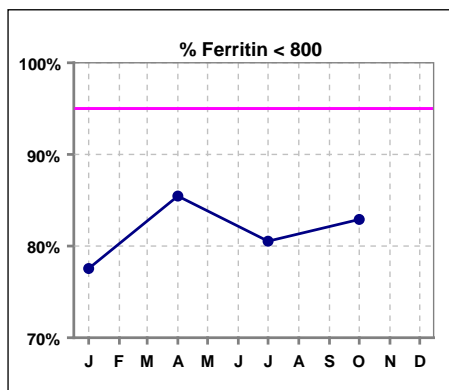
V. ANEMIA - CONT.

Iron Profile

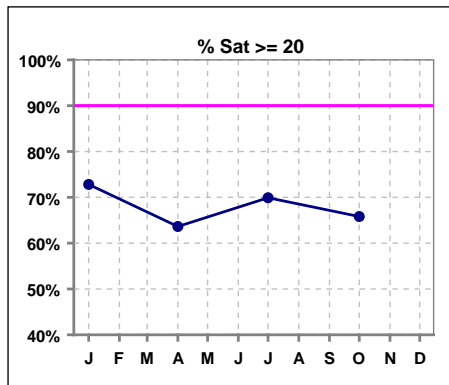
	Jan	Feb	Mar	Apr	May	Jun	Jul	Aug	Sep	Oct	Nov	Dec
# Ferritin	98			110			113			117		
# Ferritin >= 100	92			104			105			109		
Pop. Mean =	585			514			566			538		
Std. Deviation =	411			272			369			326		
Network Mean =												
Natl. Mean =												
% Ferritin >= 100	94%			95%			93%			93%		
%Natl. >=100 2004	94%			94%			94%			94%		



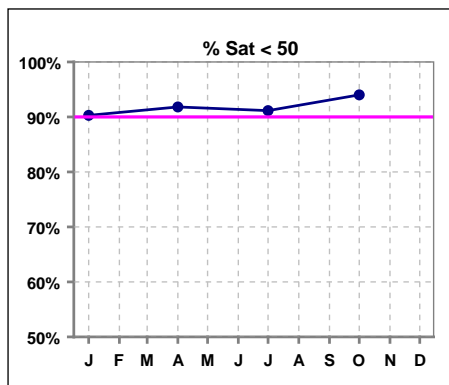
	Jan	Feb	Mar	Apr	May	Jun	Jul	Aug	Sep	Oct	Nov	Dec
# Ferritin	98			110			113			117		
# Ferritin < 800	76			94			91			97		
Pop. Mean =	585			514			566			538		
Std. Deviation =	411			272			369			326		
Network Mean =												
Natl. Mean =												
% Ferritin < 800	78%			85%			81%			83%		



	Jan	Feb	Mar	Apr	May	Jun	Jul	Aug	Sep	Oct	Nov	Dec
# % Sat	103			110			113			117		
# % Sat >= 20	75			70			79			77		
Pop. Mean =	29			27			27			26		
Std. Deviation =	16			17			14			14		
Network Mean =												
Natl. Mean =												
% Sat% >= 20	73%			64%			70%			66%		
%Natl. >=20 2004	81%			81%			81%			81%		



	Jan	Feb	Mar	Apr	May	Jun	Jul	Aug	Sep	Oct	Nov	Dec
# % Sat	103			110			113			117		
# % Sat < 50	93			101			103			110		
Pop. Mean =	29			27			27			26		
Std. Deviation =	16			17			14			14		
Network Mean =												
Natl. Mean =												
% Sat% < 50	90%			92%			91%			94%		



*Methodology: a) Monthly values based on patient's monthly average of all values present for the month; b) Quarterly values are average of all values for quarter; c) Values not averaged use last value present at months end.