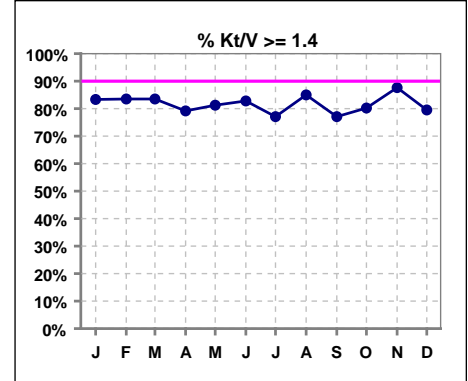


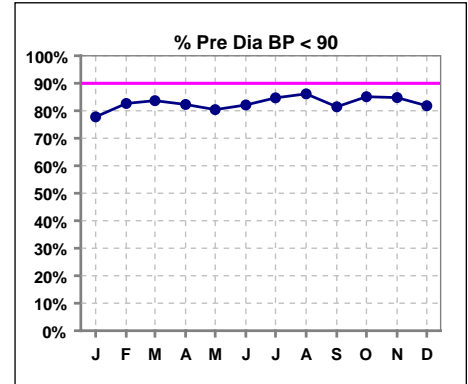
**I. ADEQUACY OF DIALYSIS**

	Jan	Feb	Mar	Apr	May	Jun	Jul	Aug	Sep	Oct	Nov	Dec
# Kt/V	96	97	97	96	96	93	96	100	96	91	89	83
# Kt/V >= 1.4	80	81	81	76	78	77	74	85	74	73	78	66
Pop. Mean	1.65	1.66	1.66	1.59	1.58	1.66	1.60	1.63	1.60	1.64	1.69	1.62
Std. Deviation	0.30	0.46	0.30	0.29	0.27	0.34	0.31	0.31	0.28	0.28	0.30	0.31
Network Mean '04	1.59	1.59	1.59	1.59	1.59	1.59	1.59	1.59	1.59	1.59	1.59	1.59
Natl. Mean '06								1.55	1.55	1.55	1.55	1.55
<b>% Kt/V &gt;= 1.4</b>	<b>83%</b>	<b>84%</b>	<b>84%</b>	<b>79%</b>	<b>81%</b>	<b>83%</b>	<b>77%</b>	<b>85%</b>	<b>77%</b>	<b>80%</b>	<b>88%</b>	<b>80%</b>
<b>% Kt/V &gt;= 1.2</b>	<b>96%</b>	<b>97%</b>	<b>95%</b>	<b>92%</b>	<b>92%</b>	<b>94%</b>	<b>90%</b>	<b>94%</b>	<b>94%</b>	<b>95%</b>	<b>98%</b>	<b>94%</b>
<b>Network % &gt;= 1.2 '06</b>	<b>92%</b>	<b>92%</b>	<b>92%</b>	<b>92%</b>	<b>92%</b>	<b>92%</b>	<b>92%</b>	<b>89%</b>	<b>89%</b>	<b>89%</b>	<b>89%</b>	<b>89%</b>
<b>Natl. % &gt;= 1.2 '06</b>	<b>89%</b>	<b>89%</b>	<b>89%</b>	<b>89%</b>	<b>89%</b>	<b>89%</b>	<b>89%</b>	<b>90%</b>	<b>90%</b>	<b>90%</b>	<b>90%</b>	<b>90%</b>

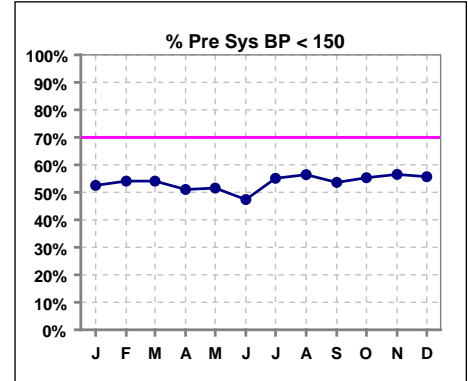


**Blood Pressure Control (Pre)**

	Jan	Feb	Mar	Apr	May	Jun	Jul	Aug	Sep	Oct	Nov	Dec
# Pre Dia BP	99	98	98	96	97	95	98	101	97	94	92	88
# Pre Dia BP < 90	77	81	82	79	78	78	83	87	79	80	78	72
Pop. Mean	79	78	77	78	79	79	78	77	78	77	77	78
Std. Deviation	13.3	12.6	12.5	12.0	12.6	12.0	13.2	12.3	14.5	13.9	12.8	13.6
Network Mean												
Natl. Mean												
<b>% Pre Dia BP &lt; 90</b>	<b>78%</b>	<b>83%</b>	<b>84%</b>	<b>82%</b>	<b>80%</b>	<b>82%</b>	<b>85%</b>	<b>86%</b>	<b>81%</b>	<b>85%</b>	<b>85%</b>	<b>82%</b>



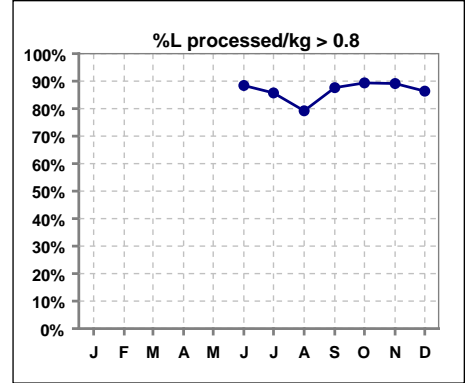
	Jan	Feb	Mar	Apr	May	Jun	Jul	Aug	Sep	Oct	Nov	Dec
# Pre Sys BP	99	98	98	96	97	95	98	101	97	94	92	88
# Pre Sys BP < 150	52	53	53	49	50	45	54	57	52	52	52	49
Pop. Mean	149	149	149	150	152	152	150	148	149	148	147	148
Std. Deviation	18.7	17.5	17.4	18.2	20.1	18.3	19.1	17.9	19.5	19.0	18.9	18.5
Network Mean												
Natl. Mean												
<b>% Pre Sys BP &lt; 150</b>	<b>53%</b>	<b>54%</b>	<b>54%</b>	<b>51%</b>	<b>52%</b>	<b>47%</b>	<b>55%</b>	<b>56%</b>	<b>54%</b>	<b>55%</b>	<b>57%</b>	<b>56%</b>



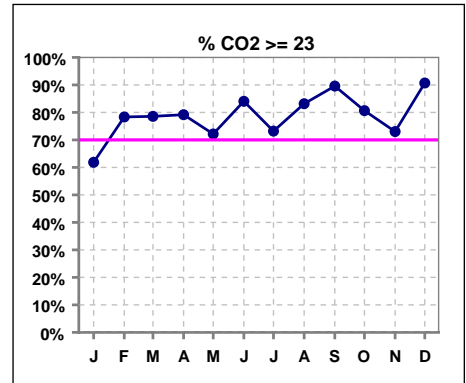
\*Methodology: a) Monthly values based on patient's monthly average of all values present for the month; b) Quarter values are average of all values for quarter; c) Values not averaged use last value present at months end.

**I. ADEQUACY OF DIALYSIS - CONT.**

	Jan	Feb	Mar	Apr	May	Jun	Jul	Aug	Sep	Oct	Nov	Dec
# L processed/kg						95	98	101	97	94	92	88
# L processed/kg>0.8						84	84	80	85	84	82	76
Pop. Mean						1	1	1	1	1	1	1
Std. Deviation						0.2	0.3	0.3	0.2	0.2	0.3	0.3
Network Mean												
Natl. Mean												
<b>% L processed/kg&gt;0.8</b>						<b>88%</b>	<b>86%</b>	<b>79%</b>	<b>88%</b>	<b>89%</b>	<b>89%</b>	<b>86%</b>



	Jan	Feb	Mar	Apr	May	Jun	Jul	Aug	Sep	Oct	Nov	Dec
# CO2	97	97	98	96	97	94	97	101	96	93	89	86
# CO2 >= 23	60	76	77	76	70	79	71	84	86	75	65	78
Pop. Mean	23	25	25	25	24	25	24	25	26	25	24	27
Std. Deviation	3.73	3.30	3.47	3.41	3.64	2.91	3.21	3.13	3.19	3.77	3.06	3.05
Network Mean												
Natl. Mean												
<b>% CO2 &gt;= 23</b>	<b>62%</b>	<b>78%</b>	<b>79%</b>	<b>79%</b>	<b>72%</b>	<b>84%</b>	<b>73%</b>	<b>83%</b>	<b>90%</b>	<b>81%</b>	<b>73%</b>	<b>91%</b>

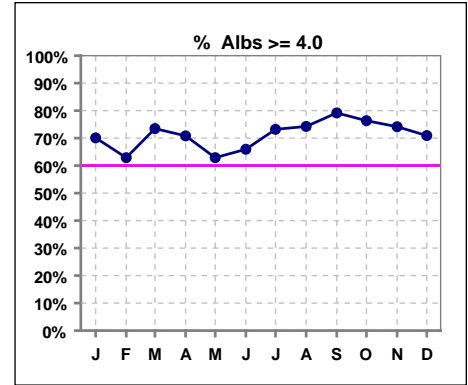


\*Methodology: a) Monthly values based on patient's monthly average of all values present for the month; b) Quarter values are average of all values for quarter; c) Values not averaged use last value present at months end.

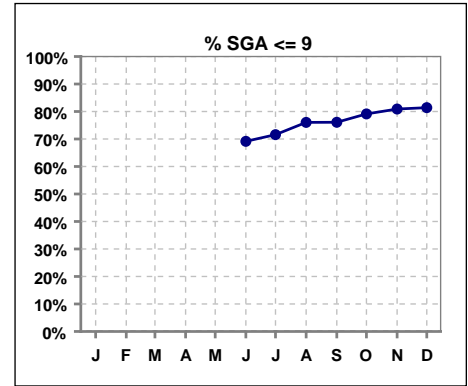
\*Albumin values use BCG method - as of July 2001

**II. NUTRITION**

	Jan	Feb	Mar	Apr	May	Jun	Jul	Aug	Sep	Oct	Nov	Dec
# Albumin	97	97	98	96	97	94	97	101	96	93	89	86
# Albumin >= 4.0	68	61	72	67	61	62	71	75	76	71	66	61
Pop. Mean	4.1	4.0	4.1	4.1	4.0	4.0	4.1	4.2	4.1	4.1	4.1	4.1
Std. Deviation	0.30	0.32	0.29	0.31	0.33	0.29	0.33	0.34	0.32	0.37	0.33	0.34
Network Mean	3.4	3.4	3.4	3.4	3.4	3.4	3.4	3.4	3.4	3.4	3.4	3.4
Natl. Mean	3.8	3.8	3.8	3.8	3.8	3.8	3.8	3.8	3.8	3.8	3.8	3.8
% Alb >= 3.5	98%	93%	95%	97%	95%	97%	95%	96%	96%	94%	94%	93%
% Alb >= 3.0	100%	99%	100%	99%	99%	100%	100%	100%	99%	100%	100%	99%
<b>% Alb &gt;= 4.0</b>	<b>70%</b>	<b>63%</b>	<b>73%</b>	<b>71%</b>	<b>63%</b>	<b>66%</b>	<b>73%</b>	<b>74%</b>	<b>79%</b>	<b>76%</b>	<b>74%</b>	<b>71%</b>
Netwk%>=3.5 '06	75%	75%	75%	75%	75%	75%	75%	82%	82%	82%	82%	82%
Netwk%>=4.0 '06	25%	25%	25%	25%	25%	25%	25%	34%	34%	34%	34%	34%
Natl % >= 3.5 '06	81%	81%	81%	81%	81%	81%	81%	81%	81%	81%	81%	81%
Natl. % >= 4.0 '06	39%	39%	39%	39%	39%	39%	39%	34%	34%	34%	34%	34%



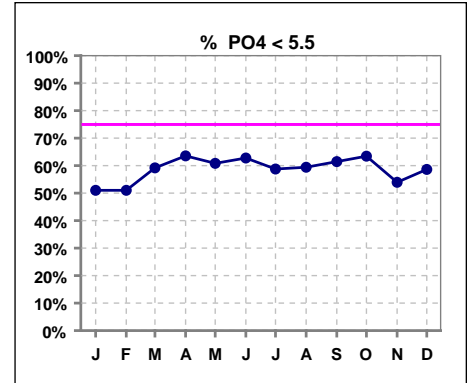
	Jan	Feb	Mar	Apr	May	Jun	Jul	Aug	Sep	Oct	Nov	Dec
# SGA						94	95	96	92	91	89	86
# SGA <=9						65	68	73	70	72	72	70
Pop. Mean						8	8	7	7	7	6	6
Std. Deviation						4.2	4.0	3.7	3.8	3.8	3.7	4.2
Network Mean												
Natl. Mean												
<b>% SGA &lt;= 9</b>						<b>69%</b>	<b>72%</b>	<b>76%</b>	<b>76%</b>	<b>79%</b>	<b>81%</b>	<b>81%</b>



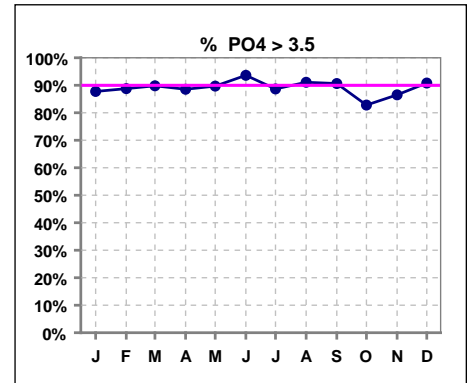
\*Methodology: a) Monthly values based on patient's monthly average of all values present for the month; b) Quarter values are average of all values for quarter; c) Values not averaged use last value present at months end.

**III. OSTEODYSTROPHY**

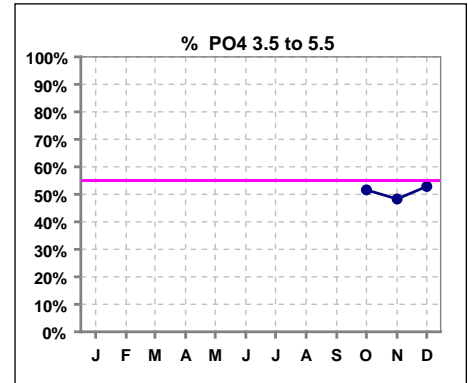
	Jan	Feb	Mar	Apr	May	Jun	Jul	Aug	Sep	Oct	Nov	Dec
# PO4	98	98	98	96	97	94	97	101	96	93	89	87
# PO4 < 5.5	50	50	58	61	59	59	57	60	59	59	48	51
Pop. Mean	5.6	5.5	5.2	5.3	5.2	5.4	5.4	5.4	5.3	5.1	5.2	5.4
Std. Deviation	1.78	1.71	1.49	1.55	1.58	1.48	1.60	1.57	1.41	1.68	1.40	1.68
Network Mean												
Natl. Mean '06								5	5	5	5	5
<b>% PO4 &lt; 5.5</b>	<b>51%</b>	<b>51%</b>	<b>59%</b>	<b>64%</b>	<b>61%</b>	<b>63%</b>	<b>59%</b>	<b>59%</b>	<b>61%</b>	<b>63%</b>	<b>54%</b>	<b>59%</b>



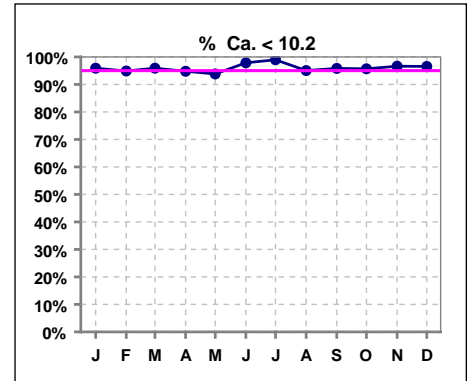
	Jan	Feb	Mar	Apr	May	Jun	Jul	Aug	Sep	Oct	Nov	Dec
# PO4	98	98	98	96	97	94	97	101	96	93	89	87
# PO4 > 3.5	86	87	88	85	87	88	86	92	87	77	77	79
Pop. Mean	5.6	5.5	5.2	5.3	5.2	5.4	5.4	5.4	5.3	5.1	5.2	5.4
Std. Deviation	1.78	1.71	1.49	1.55	1.58	1.48	1.60	1.57	1.41	1.68	1.40	1.68
Network Mean												
Natl. Mean '06								5	5	5	5	5
<b>% PO4 &gt; 3.5</b>	<b>88%</b>	<b>89%</b>	<b>90%</b>	<b>89%</b>	<b>90%</b>	<b>94%</b>	<b>89%</b>	<b>91%</b>	<b>91%</b>	<b>83%</b>	<b>87%</b>	<b>91%</b>



	Jan	Feb	Mar	Apr	May	Jun	Jul	Aug	Sep	Oct	Nov	Dec
# PO4										93	89	87
# PO4 3.5 to 5.5										48	43	46
Pop. Mean										5.1	5.2	5.4
Std. Deviation										1.68	1.40	1.68
Network Mean												
<b>% PO4 3.5 to 5.5</b>										<b>52%</b>	<b>48%</b>	<b>53%</b>



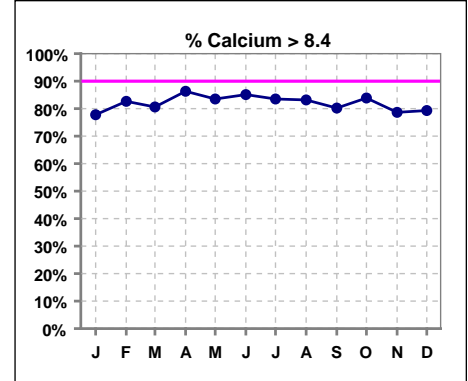
	Jan	Feb	Mar	Apr	May	Jun	Jul	Aug	Sep	Oct	Nov	Dec
# Calcium	98	98	98	96	97	94	97	101	96	93	89	87
# Calcium < 10.2	94	93	94	91	91	92	96	96	92	89	86	84
Pop. Mean	8.9	9.1	9.1	9.1	9.2	9.2	9.1	9.2	9.1	9.1	9.0	9.1
Std. Deviation	0.74	0.73	0.72	0.65	0.71	0.69	0.75	0.78	0.66	0.76	0.75	0.75
Network Mean												
Natl. Mean '06								9	9	9	9	9
<b>% Ca &lt; 10.2</b>	<b>96%</b>	<b>95%</b>	<b>96%</b>	<b>95%</b>	<b>94%</b>	<b>98%</b>	<b>99%</b>	<b>95%</b>	<b>96%</b>	<b>96%</b>	<b>97%</b>	<b>97%</b>



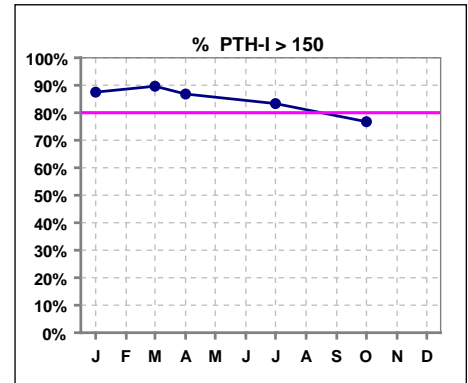
\*Methodology: a) Monthly values based on patient's monthly average of all values present for the month; b) Quarter values are average of all values for quarter; c) Values not averaged use last value present at months end.

**III. OSTEODYSTROPHY - CONT.**

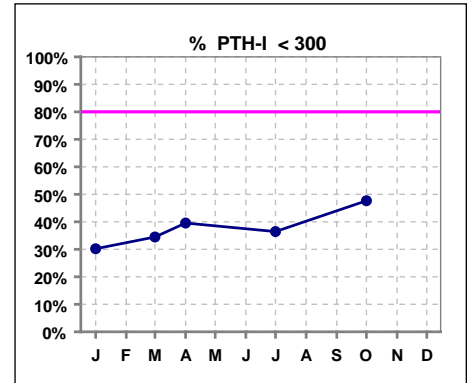
	Jan	Feb	Mar	Apr	May	Jun	Jul	Aug	Sep	Oct	Nov	Dec
# Calcium	99	98	98	95	97	94	97	101	96	93	89	87
# Calcium > 8.4	77	81	79	82	81	80	81	84	77	78	70	69
Pop. Mean	8.9	9.1	9.1	9.1	9.2	9.2	9.1	9.2	9.1	9.1	9.0	9.1
Std. Deviation	0.74	0.73	0.72	0.66	0.71	0.69	0.75	0.78	0.66	0.76	0.75	0.75
Network Mean												
Natl. Mean '06	9	9	9	9	9	9	9	9	9	9	9	9
<b>% Calcium &gt; 8.4</b>	<b>78%</b>	<b>83%</b>	<b>81%</b>	<b>86%</b>	<b>84%</b>	<b>85%</b>	<b>84%</b>	<b>83%</b>	<b>80%</b>	<b>84%</b>	<b>79%</b>	<b>79%</b>



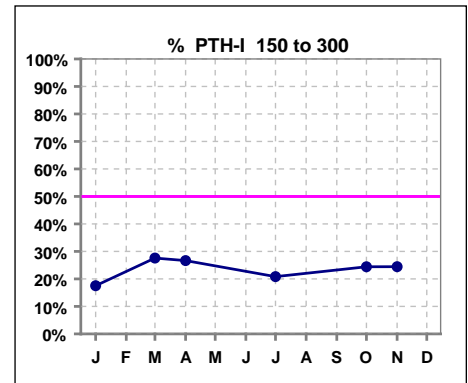
	Jan	Feb	Mar	Apr	May	Jun	Jul	Aug	Sep	Oct	Nov	Dec
# PTH-I	96		29	91			96			86		
# PTH-I > 150	84		26	79			80			66		
Pop. Mean	610		600	483			512			407		
Std. Deviation	620		517	455			459			374		
Network Mean												
Natl. Mean												
<b>% PTH-I &gt; 150</b>	<b>88%</b>		<b>90%</b>	<b>87%</b>			<b>83%</b>			<b>77%</b>		



	Jan	Feb	Mar	Apr	May	Jun	Jul	Aug	Sep	Oct	Nov	Dec
# PTH-I	96		29	91			96			86		
# PTH-I < 300	29		10	36			35			41		
Pop. Mean	610		600	483			512			407		
Std. Deviation	620		517	455			459			374		
Network Mean												
Natl. Mean												
<b>% PTH-I &lt; 300</b>	<b>30%</b>		<b>34%</b>	<b>40%</b>			<b>36%</b>			<b>48%</b>		



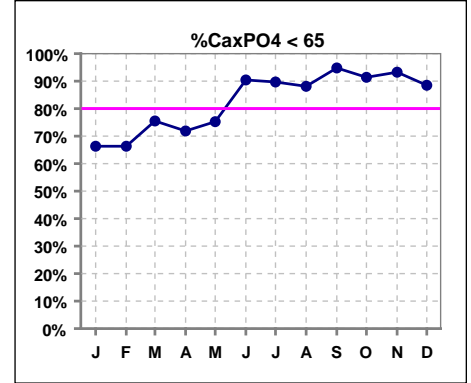
	Jan	Feb	Mar	Apr	May	Jun	Jul	Aug	Sep	Oct	Nov	Dec
# PTH-I	97		29	90			96			86	45	
# PTH-I 150 to 300	17		8	24			20			21	11	
Pop. Mean	605		600	487			512			407	553	
Std. Deviation	619		517	456			459			374	543	
Network Mean												
Natl. Mean												
<b>% PTH-I 150 to 300</b>	<b>18%</b>		<b>28%</b>	<b>27%</b>			<b>21%</b>			<b>24%</b>	<b>24%</b>	



\*Methodology: a) Monthly values based on patient's monthly average of all values present for the month; b) Quarter values are average of all values for quarter; c) Values not averaged use last value present at months end.

**III. OSTEODYSTROPHY - CONT.**

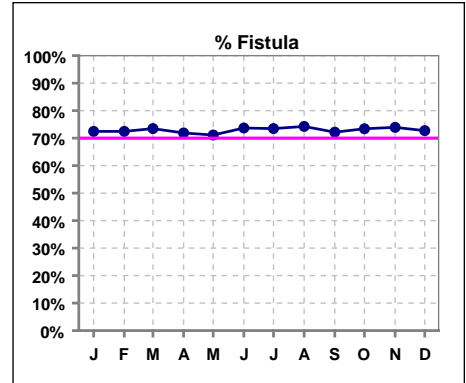
	Jan	Feb	Mar	Apr	May	Jun	Jul	Aug	Sep	Oct	Nov	Dec
# Ca x PO4	98	98	98	96	97	94	97	101	96	93	89	87
# Ca x PO4 < 55	65	65	74	69	73							
# Ca x PO4 < 65						85	87	89	91	85	83	77
Pop. Mean	49.9	50.3	47.3	48.1	47.4	49.5	48.5	49.0	48.5	46.3	46.7	48.7
Std. Deviation	14.8	15.4	13.6	14.2	14.3	13.6	13.9	14.0	13.5	14.7	12.0	14.6
Network Mean												
Natl. Mean												
<b>% CaxPO4 &lt; 65</b>	<b>66%</b>	<b>66%</b>	<b>76%</b>	<b>72%</b>	<b>75%</b>	<b>90%</b>	<b>90%</b>	<b>88%</b>	<b>95%</b>	<b>91%</b>	<b>93%</b>	<b>89%</b>



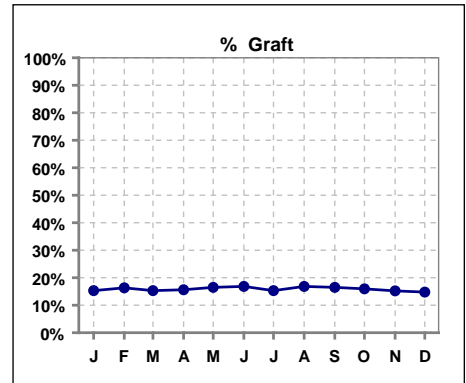
\*Methodology: a) Monthly values based on patient's monthly average of all values present for the month; b) Quarter values are average of all values for quarter; c) Values not averaged use last value present at months end.

**IV. ACCESS**

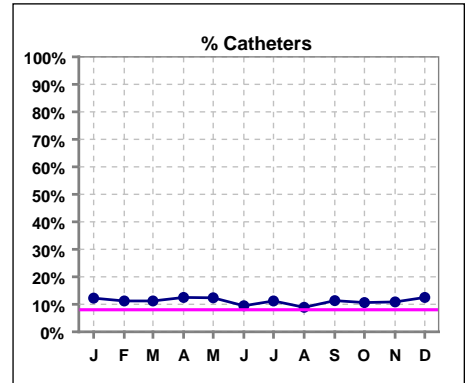
	Jan	Feb	Mar	Apr	May	Jun	Jul	Aug	Sep	Oct	Nov	Dec
# Access	98	98	98	96	97	95	98	101	97	94	92	88
# Fistula	71	71	72	69	69	70	72	75	70	69	68	64
Network % '06	58%	58%	58%	58%	58%	58%	58%	61%	61%	61%	61%	61%
Natl. % '06	39%	39%	39%	39%	39%	39%	39%	45%	45%	45%	45%	45%
<b>% Fistula</b>	<b>72%</b>	<b>72%</b>	<b>73%</b>	<b>72%</b>	<b>71%</b>	<b>74%</b>	<b>73%</b>	<b>74%</b>	<b>72%</b>	<b>73%</b>	<b>74%</b>	<b>73%</b>



	Jan	Feb	Mar	Apr	May	Jun	Jul	Aug	Sep	Oct	Nov	Dec
# Access	98	98	98	96	97	95	98	101	97	94	92	88
# Graft	15	16	15	15	16	16	15	17	16	15	14	13
Network %												
Natl. %												
<b>% Graft</b>	<b>15%</b>	<b>16%</b>	<b>15%</b>	<b>16%</b>	<b>16%</b>	<b>17%</b>	<b>15%</b>	<b>17%</b>	<b>16%</b>	<b>16%</b>	<b>15%</b>	<b>15%</b>

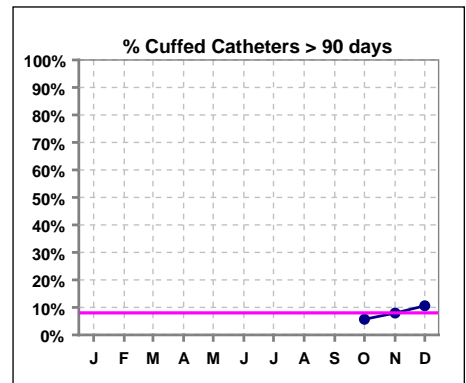


	Jan	Feb	Mar	Apr	May	Jun	Jul	Aug	Sep	Oct	Nov	Dec
# Access	98	98	98	96	97	95	98	101	97	94	92	88
# Catheters	12	11	11	12	12	9	11	9	11	10	10	11
Network % '06								22%	22%	22%	22%	22%
Natl. % '06	27%	27%	27%	27%	27%	27%	27%	29%	29%	29%	29%	29%
<b>% Catheters</b>	<b>12%</b>	<b>11%</b>	<b>11%</b>	<b>13%</b>	<b>12%</b>	<b>9%</b>	<b>11%</b>	<b>9%</b>	<b>11%</b>	<b>11%</b>	<b>11%</b>	<b>13%</b>



**Cuffed Catheters > 90 days**

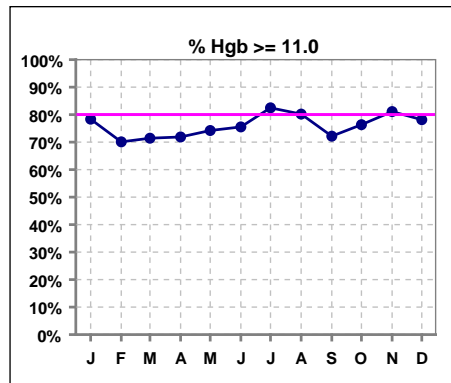
	Jan	Feb	Mar	Apr	May	Jun	Jul	Aug	Sep	Oct	Nov	Dec
# Access										94	92	88
# Cuffed Catheters										5	7	9
Network % '06										22%	22%	22%
Natl. % '06										29%	29%	29%
<b>% Cuffed Catheters</b>										<b>6%</b>	<b>8%</b>	<b>11%</b>



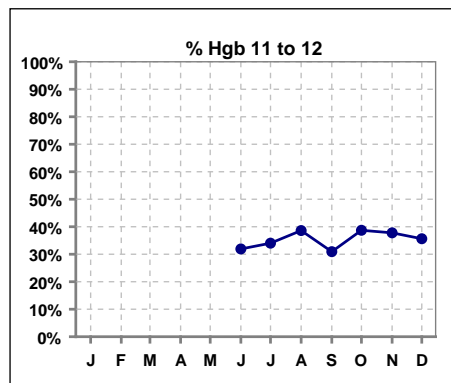
\*Methodology: a) Monthly values based on patient's monthly average of all values present for the month; b) Quarter values are average of all values for quarter; c) Values not averaged use last value present at months end.

**V. ANEMIA**

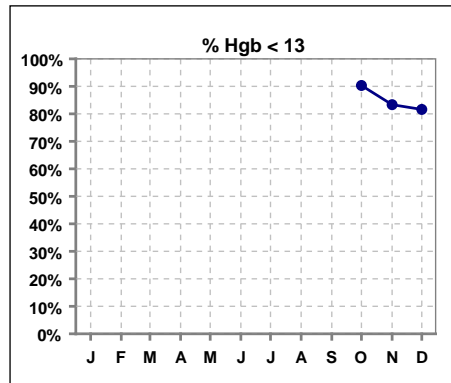
	Jan	Feb	Mar	Apr	May	Jun	Jul	Aug	Sep	Oct	Nov	Dec
# Hgb	97	97	98	96	97	94	97	101	97	93	90	87
# Hgb >= 11.0	76	68	70	69	72	71	80	81	70	71	73	68
Pop. Mean	11.9	11.7	11.7	11.6	11.7	11.8	11.8	11.9	11.8	11.6	11.9	11.9
Std. Deviation	1.3	1.4	1.2	1.3	1.3	1.2	1.0	1.3	1.3	1.3	1.3	1.3
Network Mean	11.8	11.8	11.8	11.8	11.8	11.8	11.8	11.8	11.8	11.8	11.8	11.8
Natl. Mean '06								12	12	12	12	12
<b>% Hgb &gt;= 11.0</b>	<b>78%</b>	<b>70%</b>	<b>71%</b>	<b>72%</b>	<b>74%</b>	<b>76%</b>	<b>82%</b>	<b>80%</b>	<b>72%</b>	<b>76%</b>	<b>81%</b>	<b>78%</b>
% Hgb <= 11.0	23%	33%	30%	28%	27%	26%	20%	22%	29%	26%	22%	22%
% Netwk >= 11 '06	80%	80%	80%	80%	80%	80%	80%	87%	87%	87%	87%	87%
% Natl. >= 11 '06	80%	80%	80%	80%	80%	80%	80%	84%	84%	84%	84%	84%



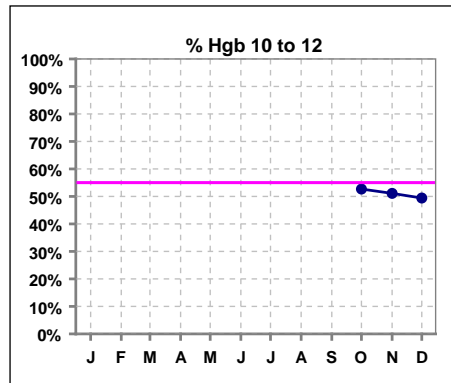
	Jan	Feb	Mar	Apr	May	Jun	Jul	Aug	Sep	Oct	Nov	Dec
# Hgb						94	97	101	97	93	90	87
# Hgb 11 to 12						30	33	39	30	36	34	31
Pop. Mean						11.8	11.8	11.9	11.8	11.6	11.9	11.9
Std. Deviation						1.2	1.0	1.3	1.3	1.3	1.3	1.3
Network Mean						11.8	11.8	11.8	11.8	11.8	11.8	11.8
Natl. Mean '06								12	12	12	12	12
<b>% Hgb 11 to 12</b>						<b>32%</b>	<b>34%</b>	<b>39%</b>	<b>31%</b>	<b>39%</b>	<b>38%</b>	<b>36%</b>



	Jan	Feb	Mar	Apr	May	Jun	Jul	Aug	Sep	Oct	Nov	Dec
# Hgb										93	90	87
# Hgb < 13										84	75	71
Pop. Mean										11.6	11.9	11.9
Std. Deviation										1.3	1.3	1.3
Network Mean										11.8	11.8	11.8
<b>% Hgb &lt; 13</b>										<b>90%</b>	<b>83%</b>	<b>82%</b>



	Jan	Feb	Mar	Apr	May	Jun	Jul	Aug	Sep	Oct	Nov	Dec
# Hgb										93	90	87
# Hgb 10 to 12										49	46	43
Pop. Mean										11.6	11.9	11.9
Std. Deviation										1.3	1.3	1.3
Network Mean										11.8	11.8	11.8
<b>% Hgb 10 to 12</b>										<b>53%</b>	<b>51%</b>	<b>49%</b>

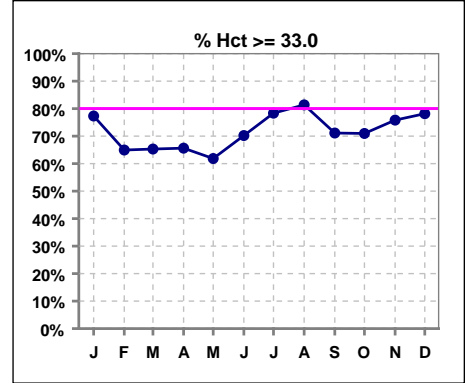


\*Methodology: a) Monthly values based on patient's monthly average of all values present for the month; b) Quarter values are average of all values for quarter; c) Values not averaged use last value present at months end.



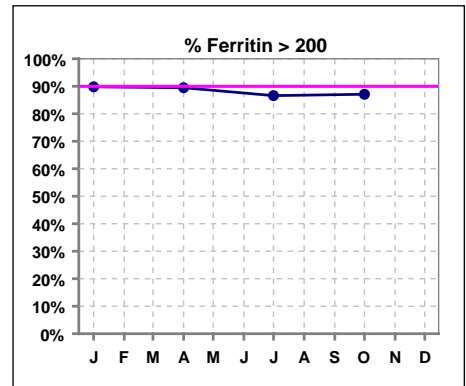
**V. ANEMIA - CONT.**

	Jan	Feb	Mar	Apr	May	Jun	Jul	Aug	Sep	Oct	Nov	Dec
# Hct	97	97	98	96	97	94	97	102	97	93	91	87
# Hct >= 33.0	75	63	64	63	60	66	76	83	69	66	69	68
Pop. Mean	35	35	35	34	34	35	35	36	35	34	35	35
Std. Deviation	3.57	4.20	3.54	3.69	3.72	3.43	3.04	4.08	3.99	3.59	3.66	3.68
Network Mean												
Natl. Mean												
<b>% Hct &gt;= 33.0</b>	77%	65%	65%	66%	62%	70%	78%	81%	71%	71%	76%	78%
<b>% Netwk &gt;= 33 '05</b>	94%	94%	94%	94%	94%	94%	94%	94%	94%	94%	94%	94%
<b>% Natl. &gt;= 33 '05</b>	92%	92%	92%	92%	92%	92%	92%	92%	92%	92%	92%	92%

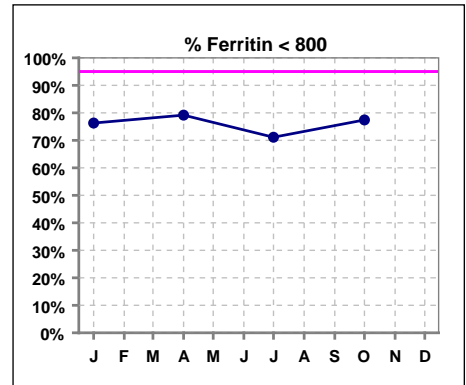


**Iron Profile**

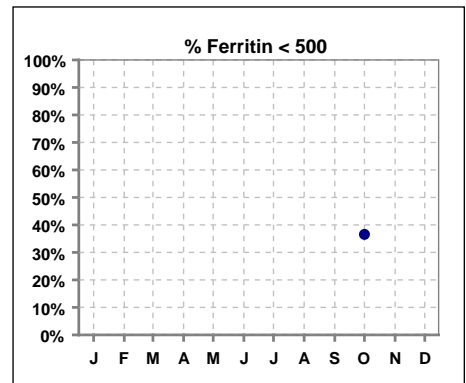
	Jan	Feb	Mar	Apr	May	Jun	Jul	Aug	Sep	Oct	Nov	Dec
# Ferritin	97			96			97			93		
# Ferritin >= 100	94			92								
# Ferritin > 200							84			81		
Pop. Mean	590			628			626			596		
Std. Deviation	311			383			375			330		
Network Mean												
Natl. Mean '06												
<b>% Ferritin &gt; 200</b>	90%			89%			87%			87%		
<b>% Netwk &gt;= 100 '06</b>	92%			92%			93%			93%		
<b>% Natl. &gt;=100 '06</b>	94%			94%			95%			95%		



	Jan	Feb	Mar	Apr	May	Jun	Jul	Aug	Sep	Oct	Nov	Dec
# Ferritin	97			96			97			93		
# Ferritin < 800	74			76			69			72		
Pop. Mean	590			628			626			596		
Std. Deviation	311			383			375			330		
Network Mean												
Natl. Mean '06												
<b>% Ferritin &lt; 800</b>	76%			79%			71%			77%		



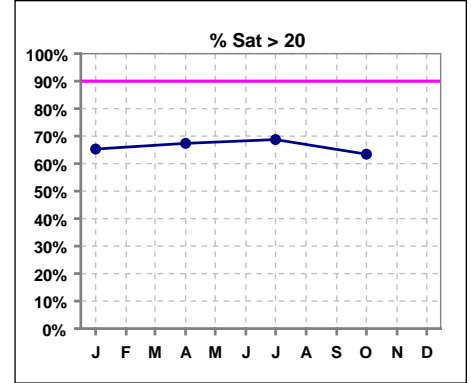
	Jan	Feb	Mar	Apr	May	Jun	Jul	Aug	Sep	Oct	Nov	Dec
# Ferritin										93		
# Ferritin < 500										34		
Pop. Mean										596		
Std. Deviation										330		
Network Mean												
<b>% Ferritin &lt; 500</b>										37%		



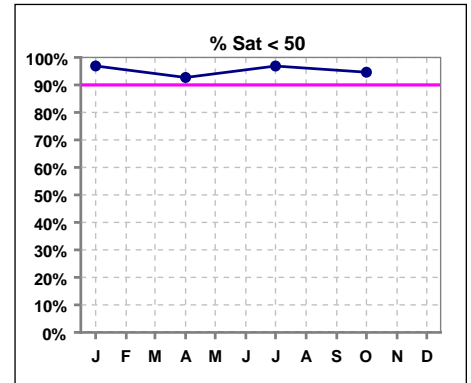
\*Methodology: a) Monthly values based on patient's monthly average of all values present for the month; b) Quarter values are average of all values for quarter; c) Values not averaged use last value present at months end.

**V. ANEMIA - CONT.**

	Jan	Feb	Mar	Apr	May	Jun	Jul	Aug	Sep	Oct	Nov	Dec
# % Sat	98			95			96			93		
# % Sat > 20	64			64			66			59		
Pop. Mean	26			27			26			27		
Std. Deviation	12			13			11			14		
Network Mean												
Natl. Mean '06	28			28			28			28		
<b>% Sat% &gt; 20</b>	65%			67%			69%			63%		
<b>% Netwk &gt;= 20 '06</b>	74%			74%			74%			74%		
<b>% Natl. &gt;=20 '06</b>	79%			79%			79%			79%		



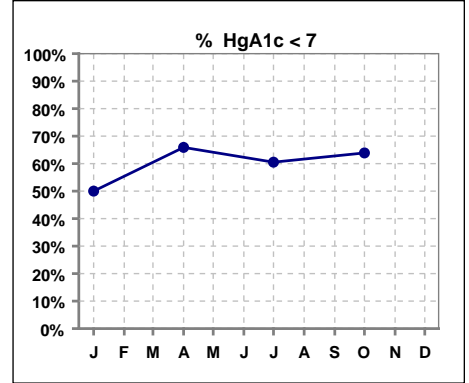
	Jan	Feb	Mar	Apr	May	Jun	Jul	Aug	Sep	Oct	Nov	Dec
# % Sat	97			96			96			93		
# % Sat < 50	94			89			93			88		
Pop. Mean	26			27			26			27		
Std. Deviation	12			14			11			14		
Network Mean												
Natl. Mean '06										28		
<b>% Sat% &lt; 50</b>	97%			93%			97%			95%		



\*Methodology: a) Monthly values based on patient's monthly average of all values present for the month; b) Quarter values are average of all values for quarter; c) Values not averaged use last value present at months end.

**VI. Diabetes**

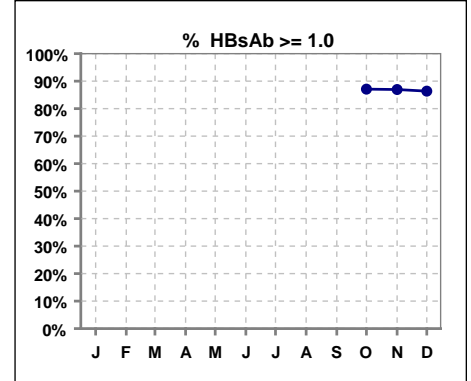
	Jan	Feb	Mar	Apr	May	Jun	Jul	Aug	Sep	Oct	Nov	Dec
# HgA1c	38			44			38			36		
# HgA1c < 7	19			29			23			23		
Pop. Mean	7.1			6.5			7.0			6.7		
Std. Deviation	1.72			1.33			1.70			1.57		
Network Mean												
Natl. Mean												
<b>% HgA1c &lt; 7</b>	<b>50%</b>			<b>66%</b>			<b>61%</b>			<b>64%</b>		



\*Methodology: a) Monthly values based on patient's monthly average of all values present for the month; b) Quarter values are average of all values for quarter; c) Values not averaged use last value present at months end.

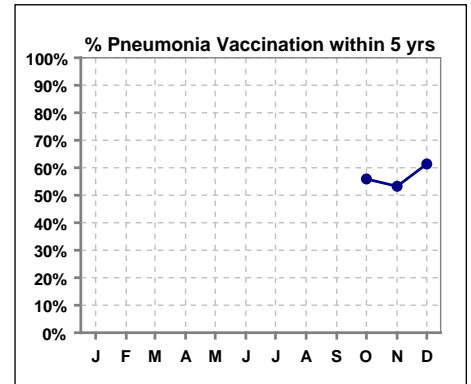
**VII. Infection Control**

	Jan	Feb	Mar	Apr	May	Jun	Jul	Aug	Sep	Oct	Nov	Dec
# Patient										93	92	88
# HBsAb >= 1.0										81	80	76
<b>% HBsAb &gt;= 1.0</b>										<b>87%</b>	<b>87%</b>	<b>86%</b>



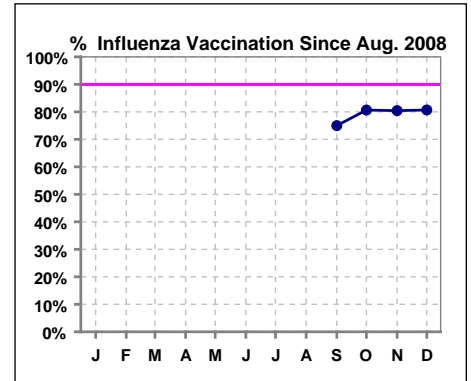
**Pneumonia vaccination within the past five years at NKC**

	Jan	Feb	Mar	Apr	May	Jun	Jul	Aug	Sep	Oct	Nov	Dec
# Patient										93	92	88
# Pneumonia										52	49	54
<b>% Pneumonia</b>										<b>56%</b>	<b>53%</b>	<b>61%</b>



**Influenza vaccination since August at NKC**

	Jan	Feb	Mar	Apr	May	Jun	Jul	Aug	Sep	Oct	Nov	Dec
# Patient								101	96	93	92	88
# Influenza since 08/08									72	75	74	71
<b>% Influenza</b>									<b>75%</b>	<b>81%</b>	<b>80%</b>	<b>81%</b>



\*Methodology: a) Monthly values based on patient's monthly average of all values present for the month; b) Quarter values are average of all values for quarter; c) Values not averaged use last value present at months end.