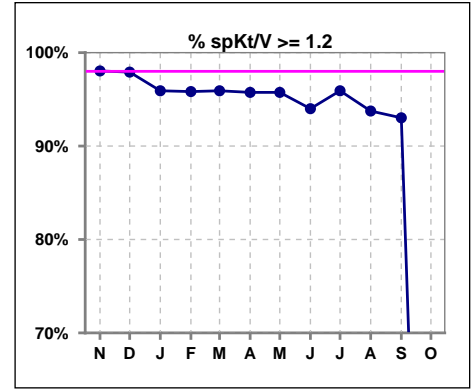
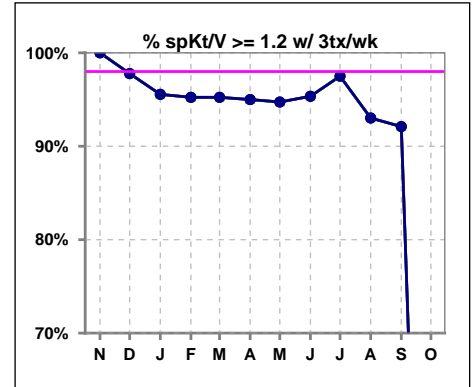


**I. ADEQUACY OF DIALYSIS**

	Nov	Dec	Jan	Feb	Mar	Apr	May	Jun	Jul	Aug	Sep	Oct
# spKt/V	51	48	49	48	49	47	47	50	49	48	43	0
# spKt/V >= 1.2	50	47	47	46	47	45	45	47	47	45	40	0
Pop. Mean	1.64	1.68	1.60	1.65	1.65	1.65	1.62	1.58	1.63	1.56	1.58	0
Std. Deviation	0.27	0.25	0.27	0.26	0.33	0.31	0.27	0.27	0.27	0.28	0.36	0
% spKt/V >= 1.2	98%	98%	96%	96%	96%	96%	96%	94%	96%	94%	93%	0%



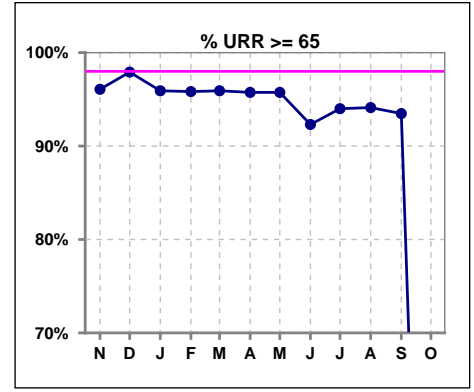
	Nov	Dec	Jan	Feb	Mar	Apr	May	Jun	Jul	Aug	Sep	Oct
# spKt/V w/ 3tx/wk	47	45	45	42	42	40	38	43	40	43	38	0
# spKt/V >= 1.2 w/3tx/wk	47	44	43	40	40	38	36	41	39	40	35	0
Pop. Mean	1.65	1.67	1.60	1.64	1.64	1.63	1.61	1.59	1.66	1.56	1.55	0
Std. Deviation	0.24	0.25	0.26	0.26	0.34	0.32	0.28	0.26	0.24	0.28	0.26	0
% >= 1.2 w/3tx/wk	100%	98%	96%	95%	95%	95%	95%	95%	98%	93%	92%	0%



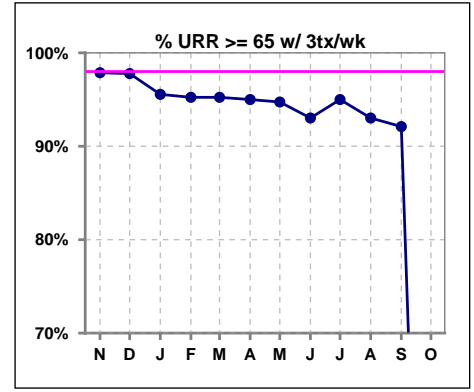
Methodology: a) All labs for 'Adequacy of Dialysis', 'Nutrition', 'Osteodystrophy', 'Anemia' and 'Diabetes' based on last value of month; b) BP's and #L processed are average of all values for month; c) Access data takes last access of month; d) Values for SGA and 'Infection Control' use most recent result.

**I. ADEQUACY OF DIALYSIS - CONT.**

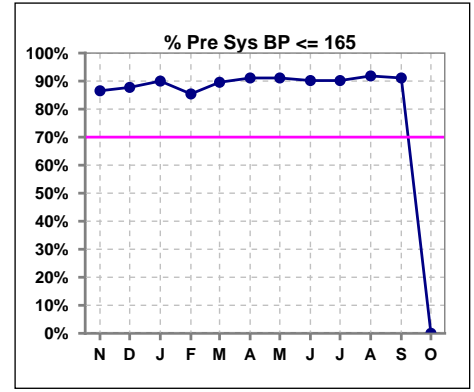
	Nov	Dec	Jan	Feb	Mar	Apr	May	Jun	Jul	Aug	Sep	Oct
# URR	51	48	49	48	49	47	47	52	50	51	46	0
# URR >= 65	49	47	47	46	47	45	45	48	47	48	43	0
Pop. Mean	75	76	75	76	75	75	75	74	75	74	74	0
Std. Deviation	5.90	4.72	5.77	5.08	6.82	6.66	5.95	6.37	5.98	6.12	6.42	0
% URR >= 65	96%	98%	96%	96%	96%	96%	96%	92%	94%	94%	93%	0%



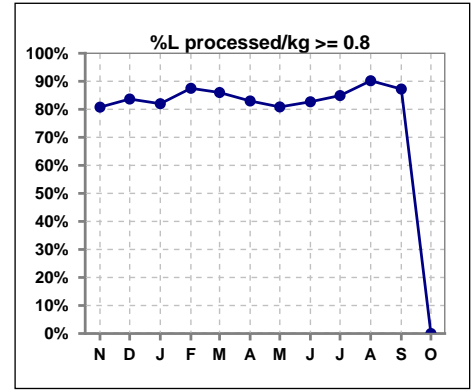
	Nov	Dec	Jan	Feb	Mar	Apr	May	Jun	Jul	Aug	Sep	Oct
# URR w/ 3tx/wk	47	45	45	42	42	40	38	43	40	43	38	0
# URR>=65 w/ 3tx/wk	46	44	43	40	40	38	36	40	38	40	35	0
Pop. Mean	76	76	75	75	75	75	75	75	76	74	74	0
Std. Deviation	4.84	4.71	5.68	5.10	6.91	7.03	6.32	6.44	5.33	6.45	6.09	0
% URR>=65 w/ 3tx/wk	98%	98%	96%	95%	95%	95%	95%	93%	95%	93%	92%	0%



	Nov	Dec	Jan	Feb	Mar	Apr	May	Jun	Jul	Aug	Sep	Oct
# Pre Sys BP	52	49	50	48	48	45	45	51	51	49	45	0
# Pre Sys BP <= 165	45	43	45	42	43	41	41	46	47	45	41	0
Pop. Mean	143	142	141	139	141	141	141	138	137	140	141	0
Std. Deviation	20.8	18.2	20.2	21.2	19.1	20.0	19.6	18.6	20.9	22.6	20.0	0
% Pre Sys BP <=165	87%	88%	90%	85%	90%	91%	91%	90%	90%	92%	91%	0%



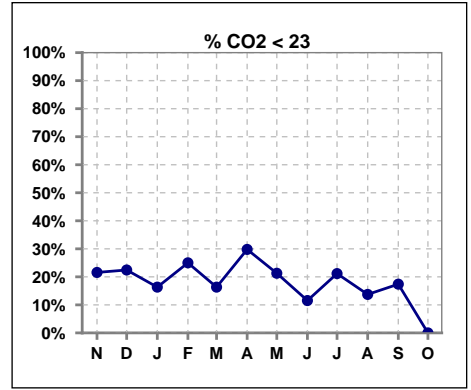
	Nov	Dec	Jan	Feb	Mar	Apr	May	Jun	Jul	Aug	Sep	Oct
# L processed/kg	52	49	50	48	50	47	47	52	53	51	47	0
# L processed/kg>=0.8	42	41	41	42	43	39	38	43	45	46	41	0
Pop. Mean	1	1	1	1	1	1	1	1	1	1	1	0
Std. Deviation	0.3	0.2	0.3	0.3	0.3	0.3	0.3	0.3	0.3	0.3	0.3	0
% L processed/kg>=0.8	81%	84%	82%	88%	86%	83%	81%	83%	85%	90%	87%	0%



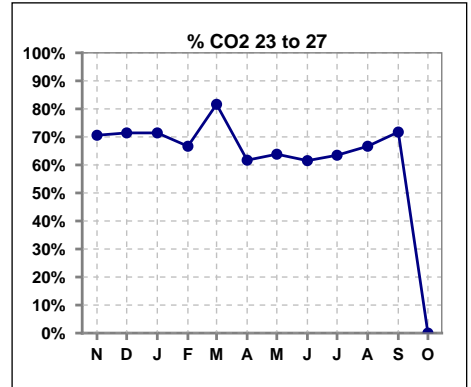
Methodology: a) All labs for 'Adequacy of Dialysis', 'Nutrition', 'Osteodystrophy', 'Anemia' and 'Diabetes' based on last value of month; b) BP's and #L processed are average of all values for month; c) Access data takes last access of month; d) Values for SGA and 'Infection Control' use most recent result.

**I. ADEQUACY OF DIALYSIS - CONT.**

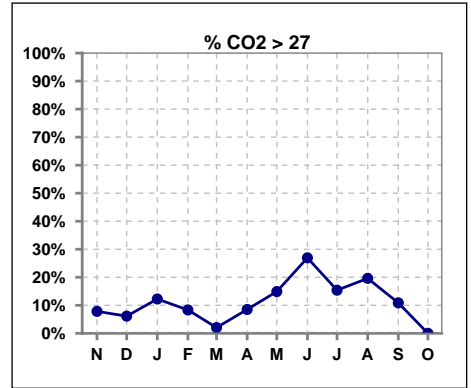
	Nov	Dec	Jan	Feb	Mar	Apr	May	Jun	Jul	Aug	Sep	Oct
# CO2	51	49	49	48	49	47	47	52	52	51	46	0
# CO2 < 23	11	11	8	12	8	14	10	6	11	7	8	0
Pop. Mean	24	24	25	24	24	24	25	26	25	25	25	0
Std. Deviation	2.51	2.48	2.80	2.51	2.20	2.80	2.93	3.23	2.98	2.74	2.54	0
% CO2 < 23	22%	22%	16%	25%	16%	30%	21%	12%	21%	14%	17%	0%



	Nov	Dec	Jan	Feb	Mar	Apr	May	Jun	Jul	Aug	Sep	Oct
# CO2	51	49	49	48	49	47	47	52	52	51	46	0
# CO2 23 to 27	36	35	35	32	40	29	30	32	33	34	33	0
Pop. Mean	24	24	25	24	24	24	25	26	25	25	25	0
Std. Deviation	2.51	2.48	2.80	2.51	2.20	2.80	2.93	3.23	2.98	2.74	2.54	0
% CO2 23 to 27	71%	71%	71%	67%	82%	62%	64%	62%	63%	67%	72%	0%



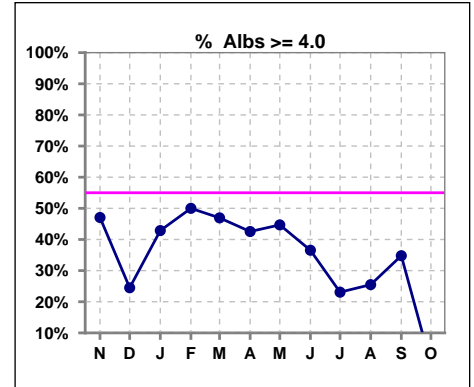
	Nov	Dec	Jan	Feb	Mar	Apr	May	Jun	Jul	Aug	Sep	Oct
# CO2	51	49	49	48	49	47	47	52	52	51	46	0
# CO2 > 27	4	3	6	4	1	4	7	14	8	10	5	0
Pop. Mean	24	24	25	24	24	24	25	26	25	25	25	0
Std. Deviation	2.51	2.48	2.80	2.51	2.20	2.80	2.93	3.23	2.98	2.74	2.54	0
% CO2 > 27	8%	6%	12%	8%	2%	9%	15%	27%	15%	20%	11%	0%



\*Albumin values use BCG method - as of July 2001

**II. NUTRITION**

	Nov	Dec	Jan	Feb	Mar	Apr	May	Jun	Jul	Aug	Sep	Oct
# Albumin	51	49	49	48	49	47	47	52	52	51	46	0
# Albumin >= 4.0	24	12	21	24	23	20	21	19	12	13	16	0
Pop. Mean	3.8	3.7	3.8	3.8	3.8	3.8	3.8	3.6	3.6	3.6	3.6	0
Std. Deviation	0.44	0.40	0.41	0.47	0.52	0.46	0.42	0.57	0.51	0.54	0.57	0
% Alb >= 4.0	47%	24%	43%	50%	47%	43%	45%	37%	23%	25%	35%	0%

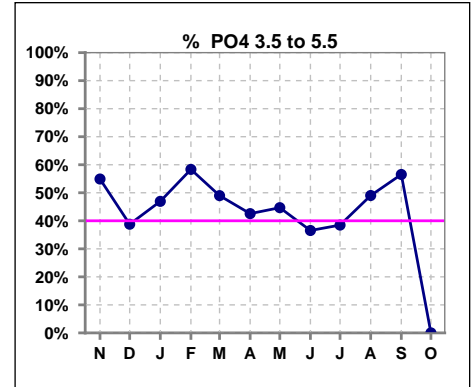


Methodology: a) All labs for 'Adequacy of Dialysis', 'Nutrition', 'Osteodystrophy', 'Anemia' and 'Diabetes' based on last value of month; b) BP's and #L processed are average of all values for month; c) Access data takes last access of month; d) Values for SGA and 'Infection Control' use most recent result.

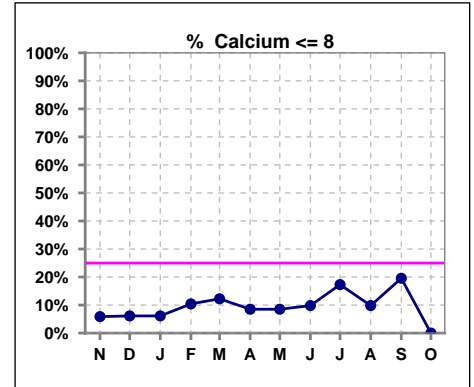
Lab methodology for PTH changed January 2012

**III. OSTEODYSTROPHY**

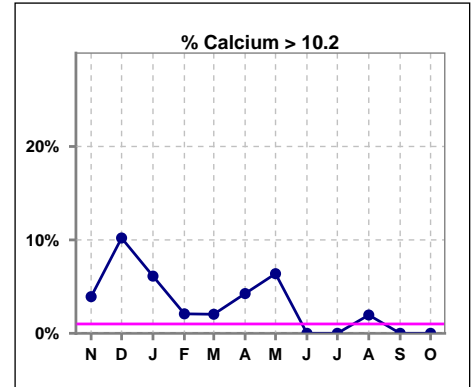
	Nov	Dec	Jan	Feb	Mar	Apr	May	Jun	Jul	Aug	Sep	Oct
# PO4	51	49	49	48	49	47	47	52	52	51	46	0
# PO4 3.5 to 5.5	28	19	23	28	24	20	21	19	20	25	26	0
Pop. Mean	5.6	5.6	5.6	5.2	5.5	5.8	5.9	6.0	6.2	5.5	5.7	0
Std. Deviation	1.90	1.94	2.02	1.38	1.56	1.88	1.74	1.57	2.27	1.80	1.80	0
% PO4 3.5 to 5.5	55%	39%	47%	58%	49%	43%	45%	37%	38%	49%	57%	0%



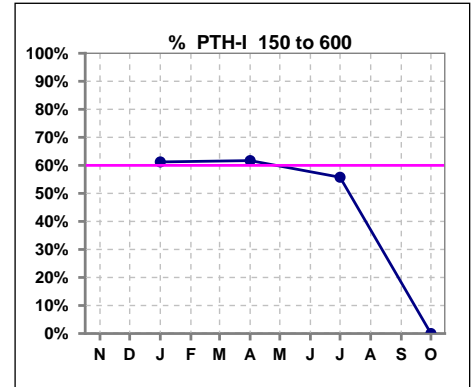
	Nov	Dec	Jan	Feb	Mar	Apr	May	Jun	Jul	Aug	Sep	Oct
# Calcium	51	49	49	48	49	47	47	51	52	51	46	0
# Calcium <= 8	3	3	3	5	6	4	4	5	9	5	9	0
Pop. Mean	9.1	9.2	9.1	9.1	9.0	9.0	9.1	8.8	8.8	8.9	8.7	0
Std. Deviation	0.79	0.86	0.72	0.73	0.76	0.71	0.79	0.77	0.88	0.69	0.80	0
% Calcium <= 8	6%	6%	6%	10%	12%	9%	9%	10%	17%	10%	20%	0%



	Nov	Dec	Jan	Feb	Mar	Apr	May	Jun	Jul	Aug	Sep	Oct
# Calcium	51	49	49	48	49	47	47	51	52	51	46	0
# Calcium > 10.2	2	5	3	1	1	2	3	0	0	1	0	0
Pop. Mean	9.1	9.2	9.1	9.1	9.0	9.0	9.1	8.8	8.8	8.9	8.7	0
Std. Deviation	0.79	0.86	0.72	0.73	0.76	0.71	0.79	0.77	0.88	0.69	0.80	0
% Calcium > 10.2	4%	10%	6%	2%	2%	4%	6%	0%	0%	2%	0%	0%



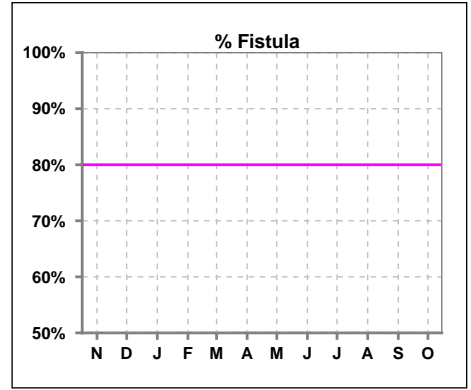
	Nov	Dec	Jan	Feb	Mar	Apr	May	Jun	Jul	Aug	Sep	Oct
# PTH-I			49			47			52			0
# PTH-I 150 to 600			30			29			29			0
Pop. Mean			440			471			551			0
Std. Deviation			306			312			382			0
% PTH-I 150 to 600			61%			62%			56%			0%



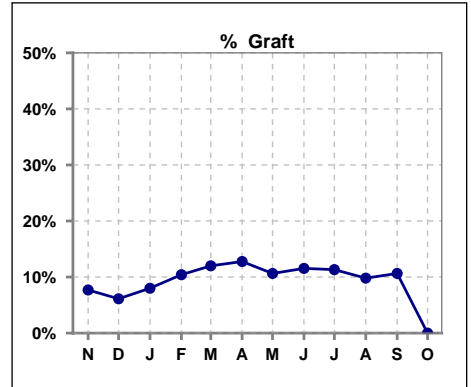
Methodology: a) All labs for 'Adequacy of Dialysis', 'Nutrition', 'Osteodystrophy', 'Anemia' and 'Diabetes' based on last value of month; b) BP's and #L processed are average of all values for month; c) Access data takes last access of month; d) Values for SGA and 'Infection Control' use most recent result.

**IV. ACCESS**

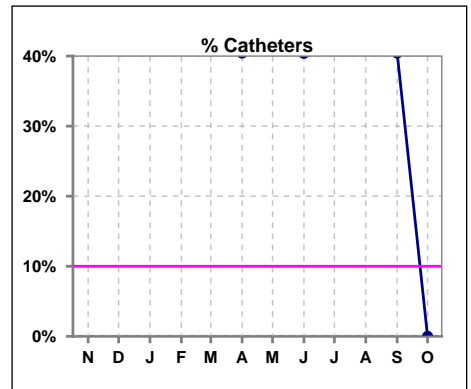
	Nov	Dec	Jan	Feb	Mar	Apr	May	Jun	Jul	Aug	Sep	Oct
# Access	52	49	50	48	50	47	47	52	53	51	47	0
# Fistula	23	23	24	23	23	22	21	25	25	25	23	0
% Fistula	44%	47%	48%	48%	46%	47%	45%	48%	47%	49%	49%	0%



	Nov	Dec	Jan	Feb	Mar	Apr	May	Jun	Jul	Aug	Sep	Oct
# Access	52	49	50	48	50	47	47	52	53	51	47	0
# Graft	4	3	4	5	6	6	5	6	6	5	5	0
% Graft	8%	6%	8%	10%	12%	13%	11%	12%	11%	10%	11%	0%



	Nov	Dec	Jan	Feb	Mar	Apr	May	Jun	Jul	Aug	Sep	Oct
# Access	52	49	50	48	50	47	47	52	53	51	47	0
# Catheters	25	23	22	20	21	19	21	21	22	21	19	0
% Catheters	48%	47%	44%	42%	42%	40%	45%	40%	42%	41%	40%	0%



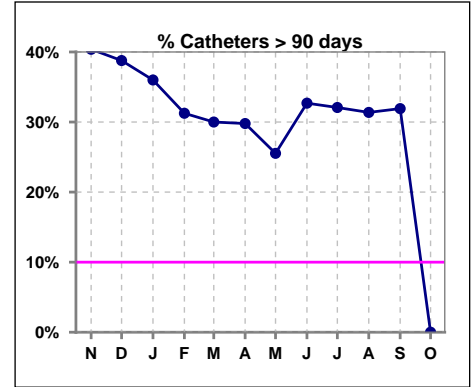
Methodology: a) All labs for 'Adequacy of Dialysis', 'Nutrition', 'Osteodystrophy', 'Anemia' and 'Diabetes' based on last value of month; b) BP's and #L processed are average of all values for month; c) Access data takes last access of month; d) Values for SGA and 'Infection Control' use most recent result.

**IV. ACCESS - CONT.**

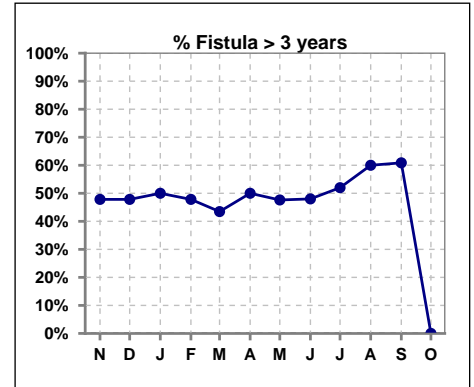
**Catheters > 90 days**

	Nov	Dec	Jan	Feb	Mar	Apr	May	Jun	Jul	Aug	Sep	Oct
# Access	52	49	50	48	50	47	47	52	53	51	47	0
# Catheters	21	19	18	15	15	14	12	17	17	16	15	0
% Catheters	40%	39%	36%	31%	30%	30%	26%	33%	32%	31%	32%	0%

Definition: Catheter in use on last treatment of the month



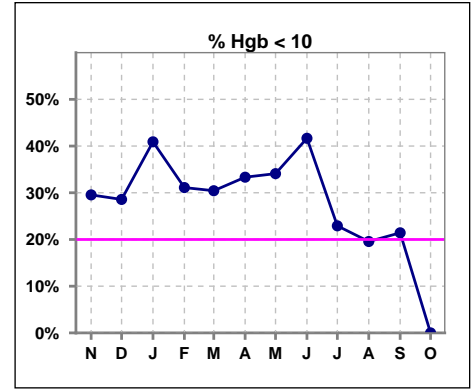
	Nov	Dec	Jan	Feb	Mar	Apr	May	Jun	Jul	Aug	Sep	Oct
# Fistula	23	23	24	23	23	22	21	25	25	25	23	0
# Fistula > 3 yrs	11	11	12	11	10	11	10	12	13	15	14	0
% Fistula > 3 yrs	48%	48%	50%	48%	43%	50%	48%	48%	52%	60%	61%	0%



**V. ANEMIA**

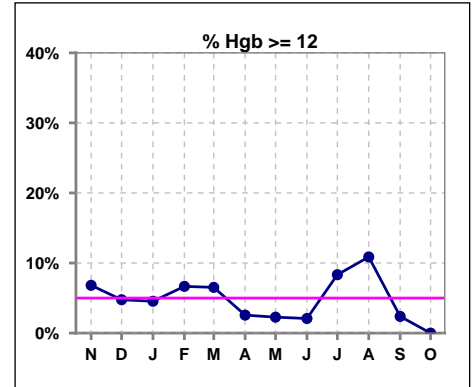
	Nov	Dec	Jan	Feb	Mar	Apr	May	Jun	Jul	Aug	Sep	Oct
# Hgb	44	42	44	45	46	39	44	48	48	46	42	0
# Hgb < 10	13	12	18	14	14	13	15	20	11	9	9	0
Pop. Mean	10.4	10.4	10.2	10.5	10.6	10.2	10.2	10.1	10.6	10.9	10.7	0
Std. Deviation	1.7	1.1	1.5	1.2	1.4	1.4	1.3	1.5	1.3	1.1	1.2	0
% Hgb < 10	30%	29%	41%	31%	30%	33%	34%	42%	23%	20%	21%	0%

Note: Excludes patients who received no ESA in month.



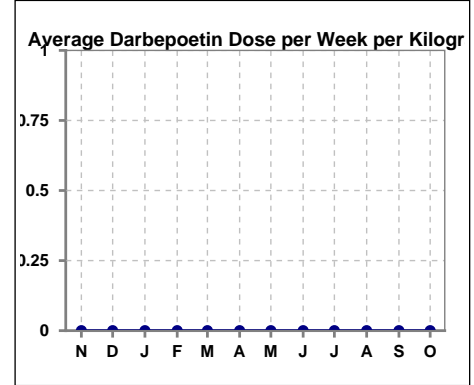
	Nov	Dec	Jan	Feb	Mar	Apr	May	Jun	Jul	Aug	Sep	Oct
# Hgb	44	42	44	45	46	39	44	48	48	46	42	0
# Hgb >= 12	3	2	2	3	3	1	1	1	4	5	1	0
Pop. Mean	10.4	10.4	10.2	10.5	10.6	10.2	10.2	10.1	10.6	10.9	10.7	0
Std. Deviation	1.7	1.1	1.5	1.2	1.4	1.4	1.3	1.5	1.3	1.1	1.2	0
% Hgb >= 12	7%	5%	5%	7%	7%	3%	2%	2%	8%	11%	2%	0%

Note: Excludes patients who received no ESA in month.



**Average Darbepoetin Dose per Week per Kilogram**

	Nov	Dec	Jan	Feb	Mar	Apr	May	Jun	Jul	Aug	Sep	Oct
# Average Darbepoetin	0	0	0	0	0	0	0	0	0	0	0	0



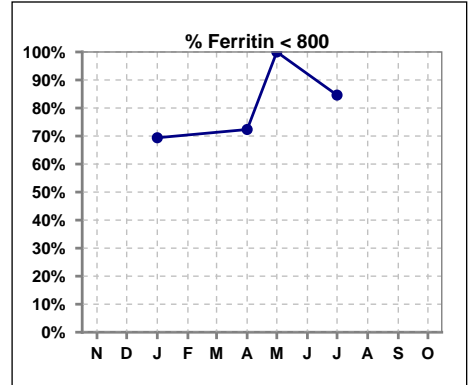
Methodology: a) All labs for 'Adequacy of Dialysis', 'Nutrition', 'Osteodystrophy', 'Anemia' and 'Diabetes' based on last value of month; b) BP's and #L processed are average of all values for month; c) Access data takes last access of month; d) Values for SGA and 'Infection Control' use most recent result.



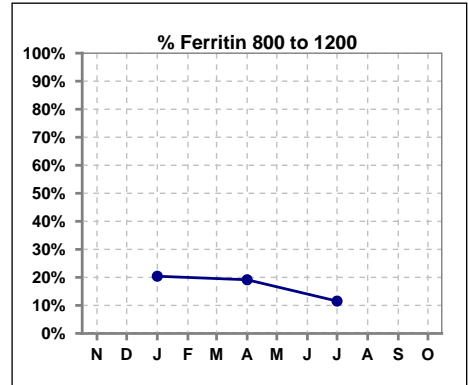
**V. ANEMIA - CONT.**

**Iron Profile**

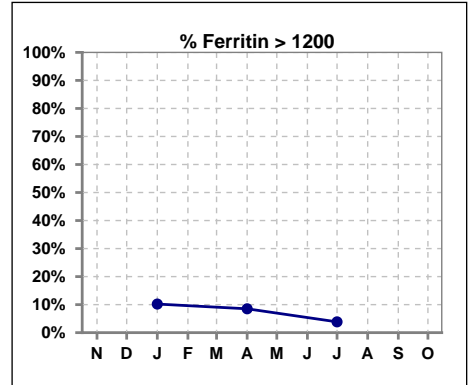
	Nov	Dec	Jan	Feb	Mar	Apr	May	Jun	Jul	Aug	Sep	Oct
# Ferritin			49			47	3		52			
# Ferritin < 800			34			34	3		44			
Pop. Mean			624			584	373		466			
Std. Deviation			443			429	202		323			
<b>% Ferritin &lt; 800</b>			69%			72%	100%		85%			



	Nov	Dec	Jan	Feb	Mar	Apr	May	Jun	Jul	Aug	Sep	Oct
# Ferritin			49			47	3		52			
# Ferritin 800 to 1200			10			9			6			
Pop. Mean			624			584	373		466			
Std. Deviation			443			429	202		323			
<b>% Ferritin 800 to 1200</b>			20%			19%			12%			



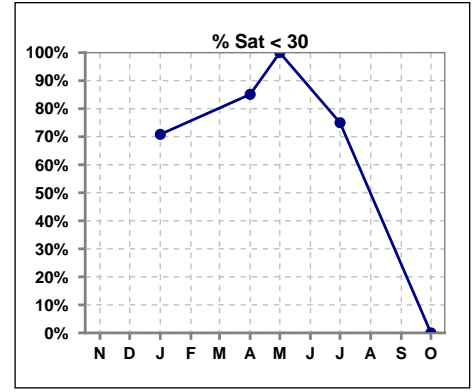
	Nov	Dec	Jan	Feb	Mar	Apr	May	Jun	Jul	Aug	Sep	Oct
# Ferritin			49			47	3		52			
# Ferritin > 1200			5			4			2			
Pop. Mean			624			584	373		466			
Std. Deviation			443			429	202		323			
<b>% Ferritin &gt; 1200</b>			10%			9%			4%			



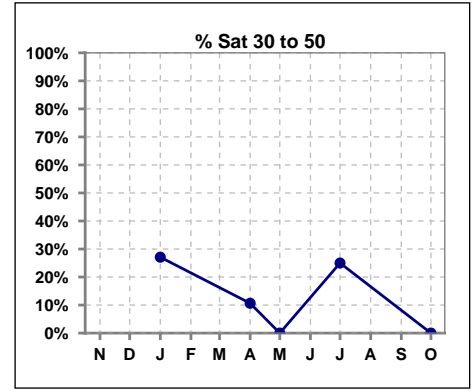
Methodology: a) All labs for 'Adequacy of Dialysis', 'Nutrition', 'Osteodystrophy', 'Anemia' and 'Diabetes' based on last value of month; b) BP's and #L processed are average of all values for month; c) Access data takes last access of month; d) Values for SGA and 'Infection Control' use most recent result.

**V. ANEMIA - CONT.**

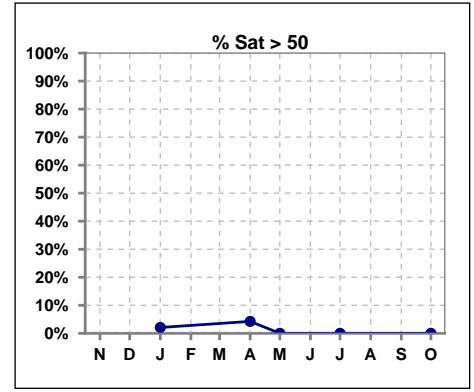
	Nov	Dec	Jan	Feb	Mar	Apr	May	Jun	Jul	Aug	Sep	Oct
# % Sat			48			47	4		52			0
# % Sat < 30			34			40	4		39			0
Pop. Mean			26			23	16		25			0
Std. Deviation			12			11	8		9			0
<b>% % Sat &lt; 30</b>			<b>71%</b>			<b>85%</b>	<b>100%</b>		<b>75%</b>			<b>0%</b>



	Nov	Dec	Jan	Feb	Mar	Apr	May	Jun	Jul	Aug	Sep	Oct
# % Sat			48			47	4		52			0
# % Sat 30 to 50			13			5	0		13			0
Pop. Mean			26			23	16		25			0
Std. Deviation			12			11	8		9			0
<b>% % Sat 30 to 50</b>			<b>27%</b>			<b>11%</b>	<b>0%</b>		<b>25%</b>			<b>0%</b>



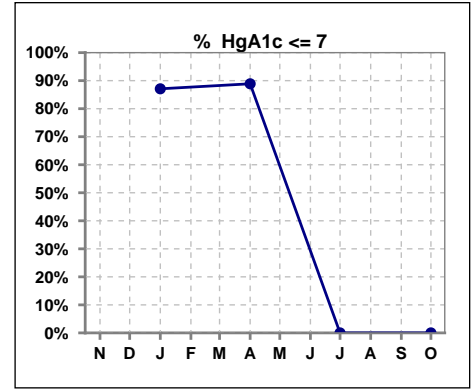
	Nov	Dec	Jan	Feb	Mar	Apr	May	Jun	Jul	Aug	Sep	Oct
# % Sat			48			47	4		52			0
# % Sat > 50			1			2	0		0			0
Pop. Mean			26			23	16		25			0
Std. Deviation			12			11	8		9			0
<b>% % Sat &gt; 50</b>			<b>2%</b>			<b>4%</b>	<b>0%</b>		<b>0%</b>			<b>0%</b>



Methodology: a) All labs for 'Adequacy of Dialysis', 'Nutrition', 'Osteodystrophy', 'Anemia' and 'Diabetes' based on last value of month; b) BP's and #L processed are average of all values for month; c) Access data takes last access of month; d) Values for SGA and 'Infection Control' use most recent result.

**VI. Diabetes**

	Nov	Dec	Jan	Feb	Mar	Apr	May	Jun	Jul	Aug	Sep	Oct
# HgA1c			31			27			0			0
# HgA1c <= 7			27			24			0			0
Pop. Mean			5.7			5.6			0			0
Std. Deviation			1.13			1.02			0			0
<b>% HgA1c &lt;= 7</b>			<b>87%</b>			<b>89%</b>			<b>0%</b>			<b>0%</b>

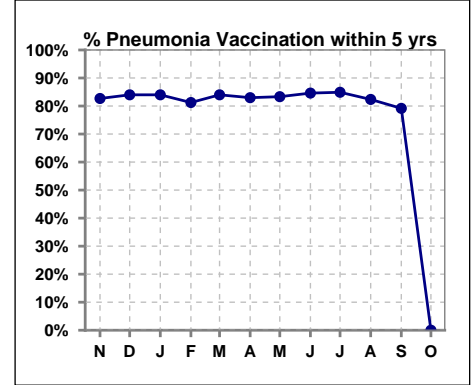


Methodology: a) All labs for 'Adequacy of Dialysis', 'Nutrition', 'Osteodystrophy', 'Anemia' and 'Diabetes' based on last value of month; b) BP's and #L processed are average of all values for month; c) Access data takes last access of month; d) Values for SGA and 'Infection Control' use most recent result.

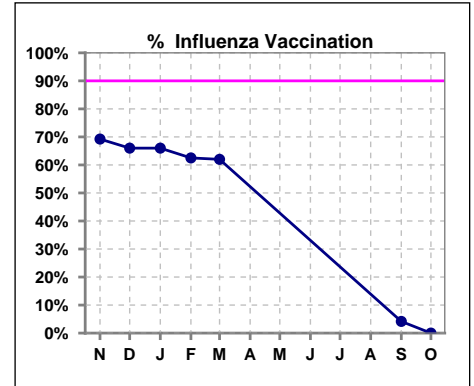
**VII. Infection Control**

**Pneumonia vaccination within the past five years**

	Nov	Dec	Jan	Feb	Mar	Apr	May	Jun	Jul	Aug	Sep	Oct
# Patient	52	50	50	48	50	47	48	52	53	51	48	1
# Pneumonia	43	42	42	39	42	39	40	44	45	42	38	0
% Pneumonia	83%	84%	84%	81%	84%	83%	83%	85%	85%	82%	79%	0%



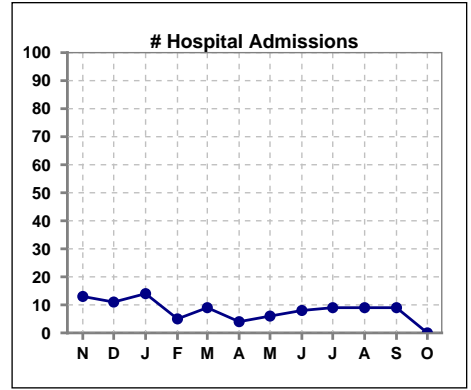
	Nov	Dec	Jan	Feb	Mar	Apr	May	Jun	Jul	Aug	Sep	Oct
# Patient	52	50	50	48	50						48	1
# Influenza	36	33	33	30	31						2	0
% Influenza	69%	66%	66%	63%	62%						4%	0%



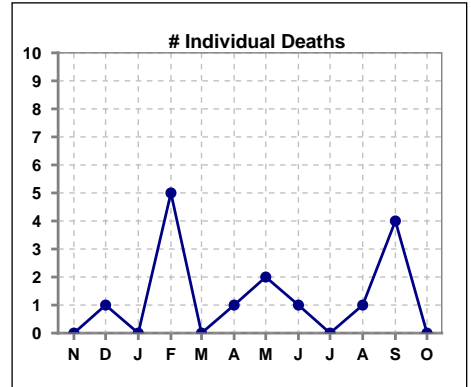
Methodology: a) All labs for 'Adequacy of Dialysis', 'Nutrition', 'Osteodystrophy', 'Anemia' and 'Diabetes' based on last value of month; b) BP's and #L processed are average of all values for month; c) Access data takes last access of month; d) Values for SGA and 'Infection Control' use most recent result.

**VIII. Outcome measures**

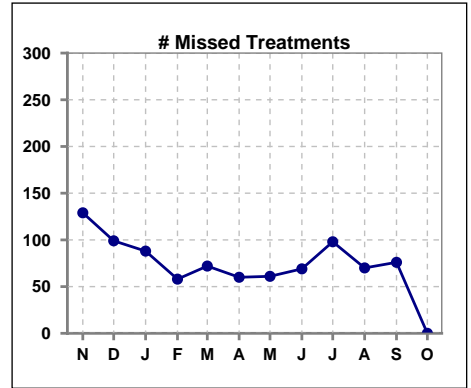
	Nov	Dec	Jan	Feb	Mar	Apr	May	Jun	Jul	Aug	Sep	Oct
# Patient	52	50	50	48	50	47	48	52	53	51	48	1
# Hospital Admissions	13	11	14	5	9	4	6	8	9	9	9	0



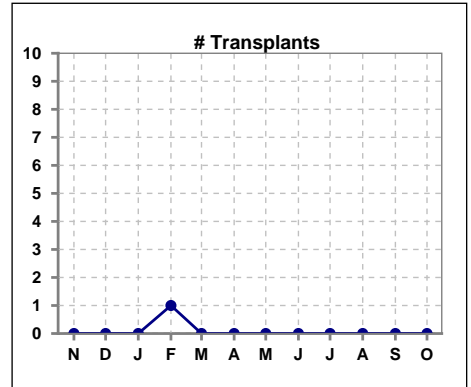
	Nov	Dec	Jan	Feb	Mar	Apr	May	Jun	Jul	Aug	Sep	Oct
# Patient	52	50	50	48	50	47	48	52	53	51	48	1
# Individual Deaths	0	1	0	5	0	1	2	1	0	1	4	0



	Nov	Dec	Jan	Feb	Mar	Apr	May	Jun	Jul	Aug	Sep	Oct
# Patient	52	50	50	48	50	47	48	52	53	51	48	1
# Missed Treatments	129	99	88	58	72	60	61	69	98	70	76	0



	Nov	Dec	Jan	Feb	Mar	Apr	May	Jun	Jul	Aug	Sep	Oct
# Patient	52	50	50	48	50	47	48	52	53	51	48	1
# Transplants	0	0	0	1	0	0	0	0	0	0	0	0



Methodology: a) All labs for 'Adequacy of Dialysis', 'Nutrition', 'Osteodystrophy', 'Anemia' and 'Diabetes' based on last value of month; b) BP's and #L processed are average of all values for month; c) Access data takes last access of month; d) Values for SGA and 'Infection Control' use most recent result.