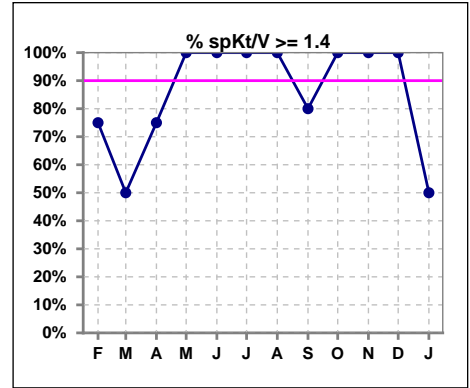
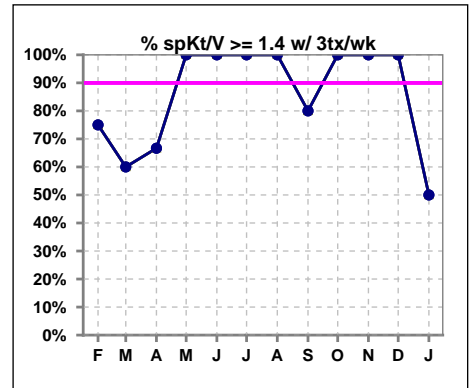


I. ADEQUACY OF DIALYSIS

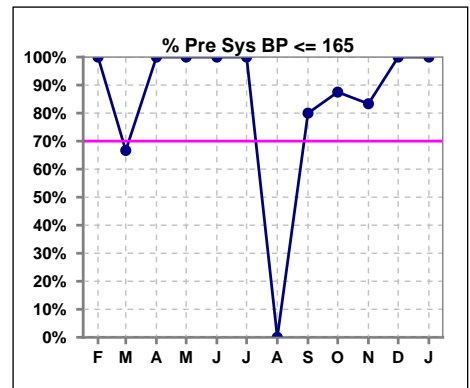
	Feb	Mar	Apr	May	Jun	Jul	Aug	Sep	Oct	Nov	Dec	Jan
# spKt/V	4	6	4	4	2	2	1	5	8	5	4	2
# spKt/V >= 1.4	3	3	3	4	2	2	1	4	8	5	4	1
Pop. Mean	1.65	1.47	1.45	1.63	1.88	1.96	1.44	1.66	1.75	1.93	1.97	1.50
Std. Deviation	0.38	0.37	0.13	0.07	0.15	0.24	0	0.35	0.27	0.38	0.46	0.39
% spKt/V >= 1.4	75%	50%	75%	100%	100%	100%	100%	80%	100%	100%	100%	50%
% spKt/V >= 1.2	75%	83%	100%	100%	100%	100%	100%	100%	100%	100%	100%	100%



	Feb	Mar	Apr	May	Jun	Jul	Aug	Sep	Oct	Nov	Dec	Jan
# spKt/V w/ 3tx/wk	4	5	3	4	2	1	1	5	7	5	3	2
# spKt/V>=1.4 w/3tx/wk	3	3	2	4	2	1	1	4	7	5	3	1
Pop. Mean	1.65	1.52	1.42	1.63	1.88	2.13	1.44	1.66	1.75	1.93	2.01	1.50
Std. Deviation	0.38	0.39	0.15	0.07	0.15	0	0	0.35	0.29	0.38	0.55	0.39
% spKt/V>=1.4 w/3tx/wk	75%	60%	67%	100%	100%	100%	100%	80%	100%	100%	100%	50%



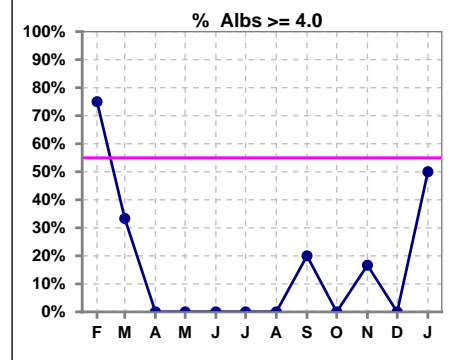
	Feb	Mar	Apr	May	Jun	Jul	Aug	Sep	Oct	Nov	Dec	Jan
# Pre Sys BP	4	6	4	4	2	2	1	5	8	6	4	2
# Pre Sys BP <= 165	4	4	4	4	2	2	0	4	8	5	4	2
Pop. Mean	140	150	147	143	146	140	172	147	141	146	142	145
Std. Deviation	10.2	14.9	15.9	13.9	20.5	33.2	0	18.9	19.4	16.1	15.9	16.3
%Pre Sys BP <=165	100%	67%	100%	100%	100%	100%	0%	80%	88%	83%	100%	100%



*Albumin values use BCG method - as of July 2001

II. NUTRITION

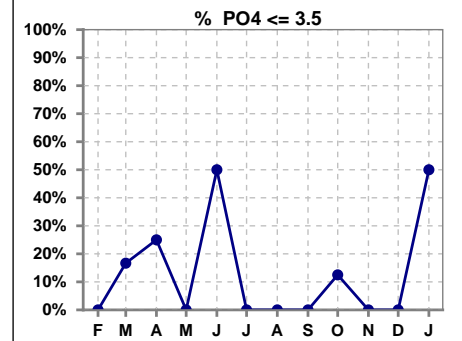
	Feb	Mar	Apr	May	Jun	Jul	Aug	Sep	Oct	Nov	Dec	Jan
# Albumin	4	6	4	4	2	2	1	5	8	6	4	2
# Albumin >= 4.0	3	2	0	0	0	0	0	1	0	1	0	1
Pop. Mean	3.9	3.6	3.3	3.6	3.6	3.4	3.5	3.4	3.5	3.7	3.5	3.7
Std. Deviation	0.83	0.77	0.38	0.25	0.35	0.49	0	0.60	0.45	0.46	0.46	0.57
% Alb >= 4.0	75%	33%	0%	0%	0%	0%	0%	20%	0%	17%	0%	50%



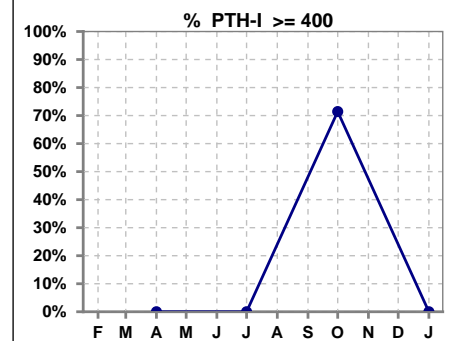
Lab methodology for PTH changed January 2012

III. OSTEODYSTROPHY

	Feb	Mar	Apr	May	Jun	Jul	Aug	Sep	Oct	Nov	Dec	Jan
# PO4	4	6	4	4	2	2	1	5	8	6	4	2
# PO4 <= 3.5	0	1	1	0	1	0	0	0	1	0	0	1
Pop. Mean	5.6	5.2	5.0	5.1	4.2	4.6	4.1	5.2	4.9	5.2	5.6	4.8
Std. Deviation	1.24	1.27	1.99	0.82	0.99	0.57	0	0.82	1.53	0.96	1.40	1.91
% PO4 <= 3.5	0%	17%	25%	0%	50%	0%	0%	0%	13%	0%	0%	50%

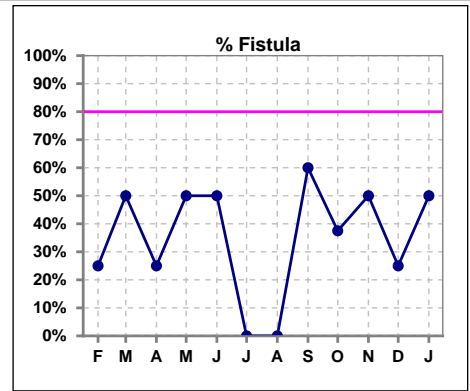


	Feb	Mar	Apr	May	Jun	Jul	Aug	Sep	Oct	Nov	Dec	Jan
# PTH-I			2			2			7			2
# PTH-I >= 400			0			0			5			0
Pop. Mean			216			273			603			217
Std. Deviation			87			137			352			8
% PTH-I >= 400			0%			0%			71%			0%

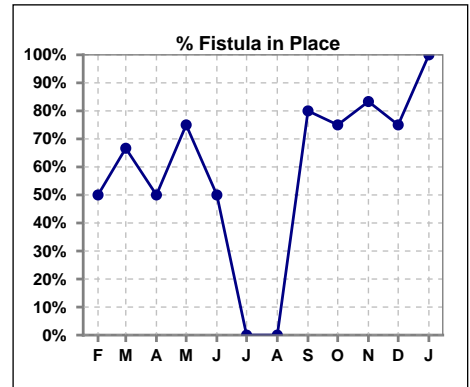


IV. ACCESS

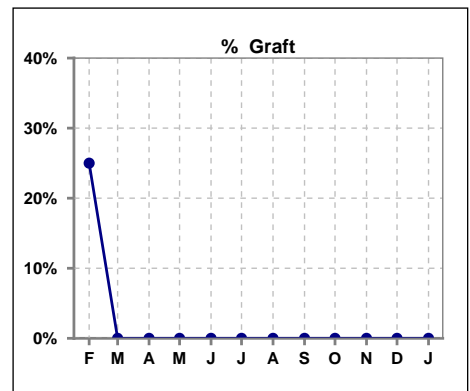
	Feb	Mar	Apr	May	Jun	Jul	Aug	Sep	Oct	Nov	Dec	Jan
# Access	4	6	4	4	2	2	1	5	8	6	4	2
# Fistula	1	3	1	2	1	0	0	3	3	3	1	1
% Fistula	25%	50%	25%	50%	50%	0%	0%	60%	38%	50%	25%	50%



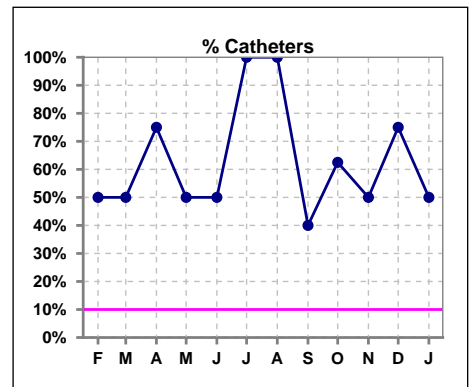
	Feb	Mar	Apr	May	Jun	Jul	Aug	Sep	Oct	Nov	Dec	Jan
# Patient	4	6	4	4	2	2	1	5	8	6	4	2
# Fistula in Place	2	4	2	3	1	0	0	4	6	5	3	2
% Fistula in Place	50%	67%	50%	75%	50%	0%	0%	80%	75%	83%	75%	100%



	Feb	Mar	Apr	May	Jun	Jul	Aug	Sep	Oct	Nov	Dec	Jan
# Access	4	6	4	4	2	2	1	5	8	6	4	2
# Graft	1	0	0	0	0	0	0	0	0	0	0	0
% Graft	25%	0%	0%	0%	0%	0%	0%	0%	0%	0%	0%	0%

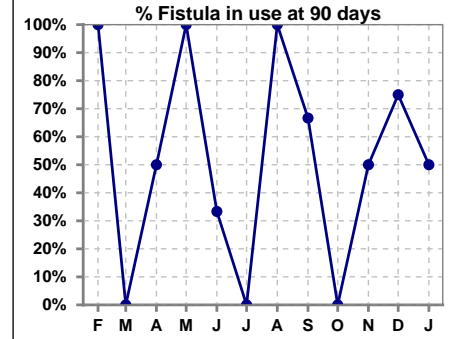


	Feb	Mar	Apr	May	Jun	Jul	Aug	Sep	Oct	Nov	Dec	Jan
# Access	4	6	4	4	2	2	1	5	8	6	4	2
# Catheters	2	3	3	2	1	2	1	2	5	3	3	1
% Catheters	50%	50%	75%	50%	50%	100%	100%	40%	63%	50%	75%	50%

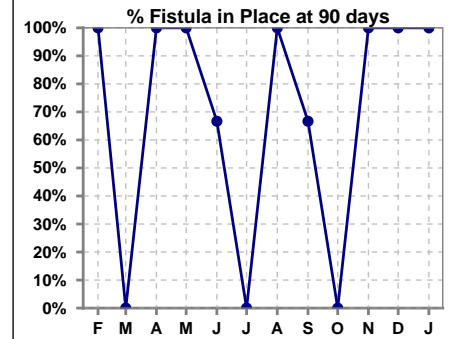


IV. ACCESS - CONT. Access at 90 days for those patients that reached 90 days within the month.

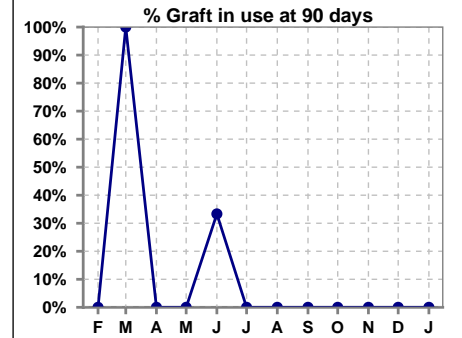
	Feb	Mar	Apr	May	Jun	Jul	Aug	Sep	Oct	Nov	Dec	Jan
# Patient	2	1	2	1	3	0	1	3	0	2	4	2
# Fistula in use	2	0	1	1	1	0	1	2	0	1	3	1
% Fistula in use	100%	0%	50%	100%	33%	0%	100%	67%	0%	50%	75%	50%



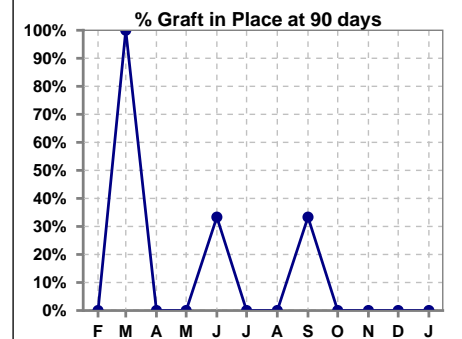
	Feb	Mar	Apr	May	Jun	Jul	Aug	Sep	Oct	Nov	Dec	Jan
# Patient	2	1	2	1	3	0	1	3	0	2	4	2
# Fistula in Place	2	0	2	1	2	0	1	2	0	2	4	2
% Fistula in Place	100%	0%	100%	100%	67%	0%	100%	67%	0%	100%	100%	100%



	Feb	Mar	Apr	May	Jun	Jul	Aug	Sep	Oct	Nov	Dec	Jan
# Patient	2	1	2	1	3	0	1	3	0	2	4	2
# Graft in use	0	1	0	0	1	0	0	0	0	0	0	0
% Graft in use	0%	100%	0%	0%	33%	0%	0%	0%	0%	0%	0%	0%

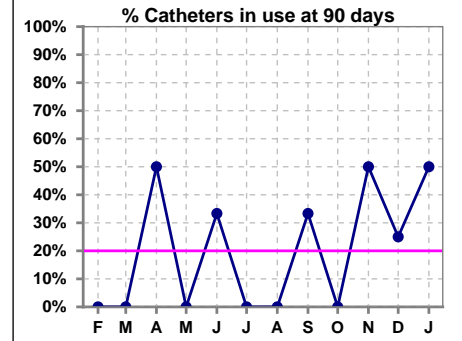


	Feb	Mar	Apr	May	Jun	Jul	Aug	Sep	Oct	Nov	Dec	Jan
# Patient	2	1	2	1	3	0	1	3	0	2	4	2
# Graft in Place	0	1	0	0	1	0	0	1	0	0	0	0
% Graft in Place	0%	100%	0%	0%	33%	0%	0%	33%	0%	0%	0%	0%

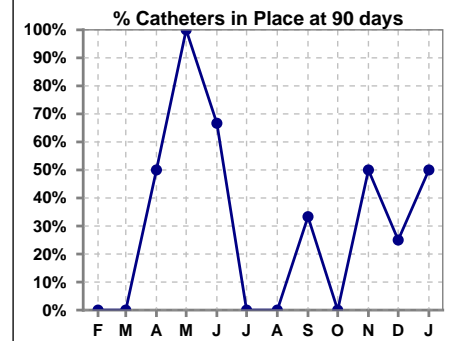


IV. ACCESS - CONT. Access at 90 days for those patients that reached 90 days within the month.

	Feb	Mar	Apr	May	Jun	Jul	Aug	Sep	Oct	Nov	Dec	Jan
# Patient	2	1	2	1	3	0	1	3	0	2	4	2
# Catheters in use	0	0	1	0	1	0	0	1	0	1	1	1
% Catheters in use	0%	0%	50%	0%	33%	0%	0%	33%	0%	50%	25%	50%

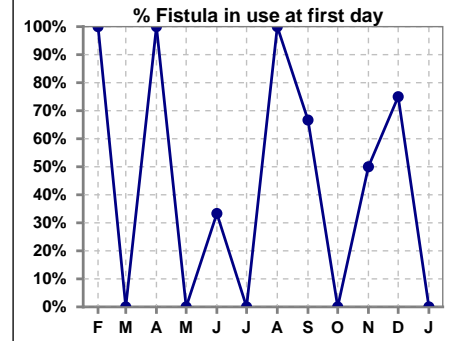


	Feb	Mar	Apr	May	Jun	Jul	Aug	Sep	Oct	Nov	Dec	Jan
# Patient	2	1	2	1	3	0	1	3	0	2	4	2
# Catheters in Place	0	0	1	1	2	0	0	1	0	1	1	1
% Catheters in Place	0%	0%	50%	100%	67%	0%	0%	33%	0%	50%	25%	50%

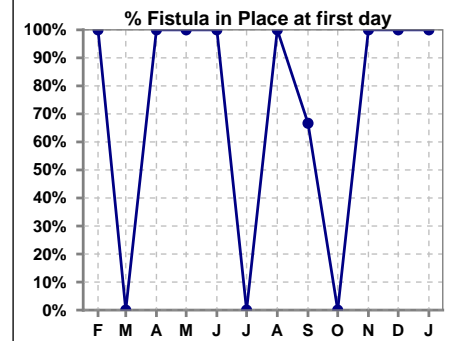


IV. ACCESS - CONT. Access at first day for those patients that reached 90 days within the month.

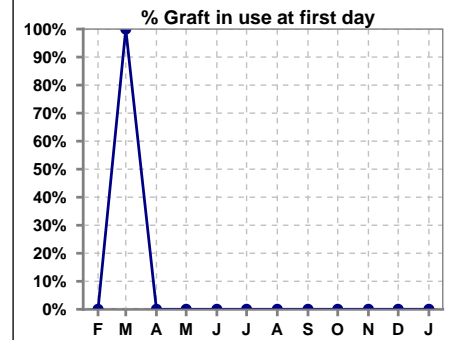
	Feb	Mar	Apr	May	Jun	Jul	Aug	Sep	Oct	Nov	Dec	Jan
# Patient	2	1	2	1	3	0	1	3	0	2	4	2
# Fistula in use	2	0	2	0	1	0	1	2	0	1	3	0
% Fistula in use	100%	0%	100%	0%	33%	0%	100%	67%	0%	50%	75%	0%



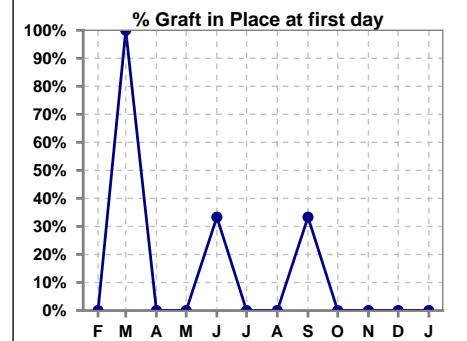
	Feb	Mar	Apr	May	Jun	Jul	Aug	Sep	Oct	Nov	Dec	Jan
# Patient	2	1	2	1	3	0	1	3	0	2	4	2
# Fistula in Place	2	0	2	1	3	0	1	2	0	2	4	2
% Fistula in Place	100%	0%	100%	100%	100%	0%	100%	67%	0%	100%	100%	100%



	Feb	Mar	Apr	May	Jun	Jul	Aug	Sep	Oct	Nov	Dec	Jan
# Patient	2	1	2	1	3	0	1	3	0	2	4	2
# Graft in use	0	1	0	0	0	0	0	0	0	0	0	0
% Graft in use	0%	100%	0%	0%	0%	0%	0%	0%	0%	0%	0%	0%

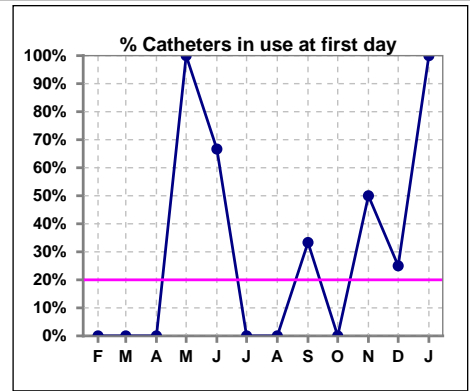


	Feb	Mar	Apr	May	Jun	Jul	Aug	Sep	Oct	Nov	Dec	Jan
# Patient	2	1	2	1	3	0	1	3	0	2	4	2
# Graft in Place	0	1	0	0	1	0	0	1	0	0	0	0
% Graft in Place	0%	100%	0%	0%	33%	0%	0%	33%	0%	0%	0%	0%

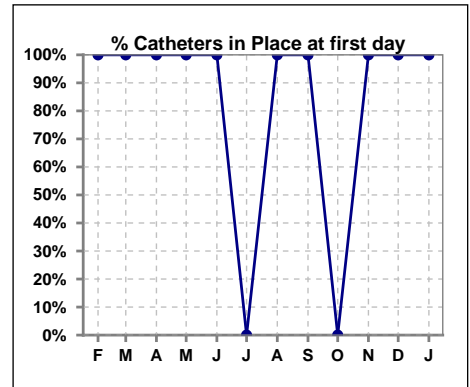


IV. ACCESS - CONT. Access at first day for those patients that reached 90 days within the month.

	Feb	Mar	Apr	May	Jun	Jul	Aug	Sep	Oct	Nov	Dec	Jan
# Patient	2	1	2	1	3	0	1	3	0	2	4	2
# Catheters in use	0	0	0	1	2	0	0	1	0	1	1	2
% Catheters in use	0%	0%	0%	100%	67%	0%	0%	33%	0%	50%	25%	100%



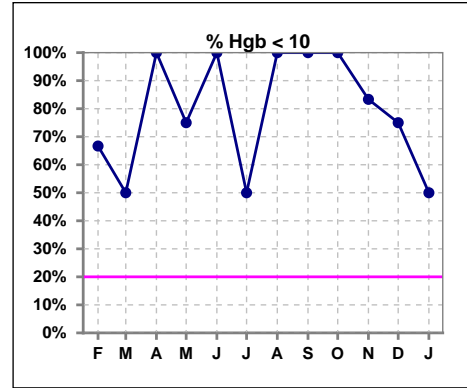
	Feb	Mar	Apr	May	Jun	Jul	Aug	Sep	Oct	Nov	Dec	Jan
# Patient	2	1	2	1	3	0	1	3	0	2	4	2
# Catheters in Place	2	1	2	1	3	0	1	3	0	2	4	2
% Catheters in Place	100%	100%	100%	100%	100%	0%	100%	100%	0%	100%	100%	100%



V. ANEMIA

	Feb	Mar	Apr	May	Jun	Jul	Aug	Sep	Oct	Nov	Dec	Jan
# Hgb	3	4	4	4	2	2	1	5	8	6	4	2
# Hgb <= 10	2	2	4	3	2	1	1	5	8	5	3	1
Pop. Mean	9.5	9.5	8.6	8.9	8.7	10.3	8.7	8.2	8.7	9.0	9.2	10.4
Std. Deviation	0.9	1.4	1.2	2.3	0.6	4.2	0	1.5	0.7	1.0	1.8	3.5
% Hgb <= 10	67%	50%	100%	75%	100%	50%	100%	100%	100%	83%	75%	50%

Note: Excludes patients who received no ESA in month.



	Feb	Mar	Apr	May	Jun	Jul	Aug	Sep	Oct	Nov	Dec	Jan
# Hgb	3	4	4	4	2	2	1	5	8	6	4	2
# Hgb >= 12	0	0	0	1	0	1	0	0	0	0	0	1
Pop. Mean	9.5	9.5	8.6	8.9	8.7	10.3	8.7	8.2	8.7	9.0	9.2	10.4
Std. Deviation	0.9	1.4	1.2	2.3	0.6	4.2	0	1.5	0.7	1.0	1.8	3.5
% Hgb >= 12	0%	0%	0%	25%	0%	50%	0%	0%	0%	0%	0%	50%

Note: Excludes patients who received no ESA in month.

