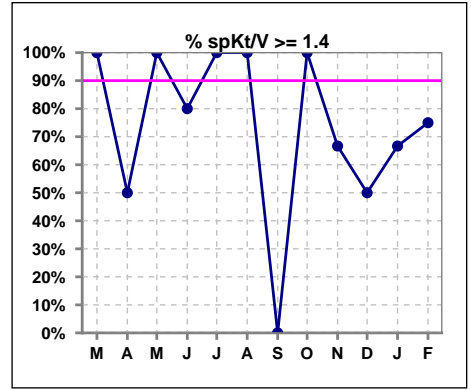
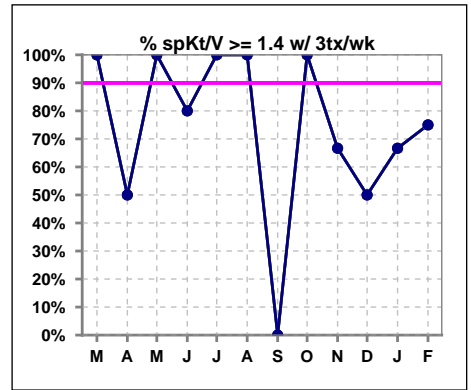


**I. ADEQUACY OF DIALYSIS**

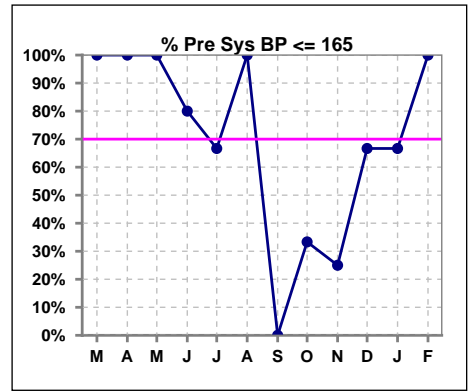
	Mar	Apr	May	Jun	Jul	Aug	Sep	Oct	Nov	Dec	Jan	Feb
# spKt/V	1	2	2	5	3	1	1	2	3	2	3	4
# spKt/V >= 1.4	1	1	2	4	3	1	0	2	2	1	2	3
Pop. Mean	2.13	1.69	1.85	1.58	1.75	1.77	1.25	1.64	1.36	1.57	1.64	1.65
Std. Deviation	0	0.49	0.23	0.19	0.33	0	0	0.25	0.40	0.44	0.30	0.38
% spKt/V >= 1.4	100%	50%	100%	80%	100%	100%	0%	100%	67%	50%	67%	75%
% spKt/V >= 1.2	100%	100%	100%	100%	100%	100%	100%	100%	67%	100%	100%	75%



	Mar	Apr	May	Jun	Jul	Aug	Sep	Oct	Nov	Dec	Jan	Feb
# spKt/V w/ 3tx/wk	1	2	2	5	3	1	1	2	3	2	3	4
# spKt/V >= 1.4 w/3tx/wk	1	1	2	4	3	1	0	2	2	1	2	3
Pop. Mean	2.13	1.69	1.85	1.58	1.75	1.77	1.25	1.64	1.36	1.57	1.64	1.65
Std. Deviation	0	0.49	0.23	0.19	0.33	0	0	0.25	0.40	0.44	0.30	0.38
% spKt/V >= 1.4 w/3tx/wk	100%	50%	100%	80%	100%	100%	0%	100%	67%	50%	67%	75%



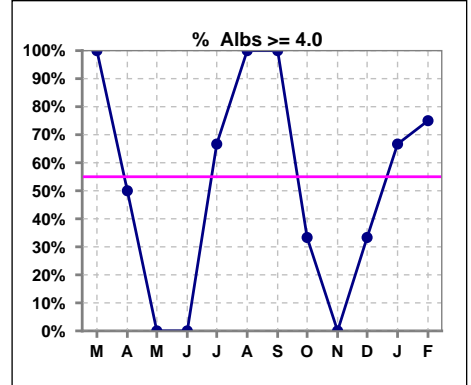
	Mar	Apr	May	Jun	Jul	Aug	Sep	Oct	Nov	Dec	Jan	Feb
# Pre Sys BP	1	2	2	5	3	1	1	3	4	3	3	4
# Pre Sys BP <= 165	1	2	2	4	2	1	0	2	1	2	2	4
Pop. Mean	146	139	154	145	141	111	174	165	186	153	145	140
Std. Deviation	0	0	3.5	17.2	24.1	0	0	16.5	23.4	20.3	24.7	10.2
%Pre Sys BP <=165	100%	100%	100%	80%	67%	100%	0%	33%	25%	67%	67%	100%



\*Albumin values use BCG method - as of July 2001

**II. NUTRITION**

	Mar	Apr	May	Jun	Jul	Aug	Sep	Oct	Nov	Dec	Jan	Feb
# Albumin	1	2	2	5	3	1	1	3	4	3	3	4
# Albumin >= 4.0	1	1	0	0	2	1	1	1	0	1	2	3
Pop. Mean	4.5	3.8	3.6	3.7	4.0	4.2	4.0	3.6	3.5	3.5	3.9	3.9
Std. Deviation	0	0.57	0.42	0.18	0.15	0	0	0.65	0.30	0.57	0.53	0.83
% Alb >= 4.0	100%	50%	0%	0%	67%	100%	100%	33%	0%	33%	67%	75%

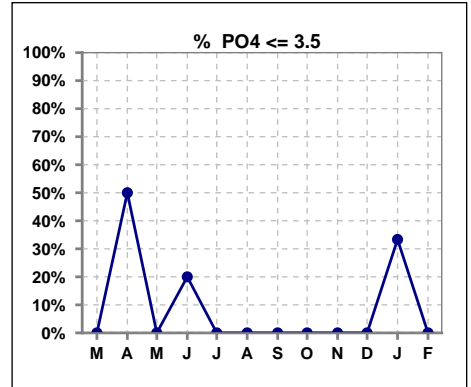


Methodology: a) All labs for 'Adequacy of Dialysis', 'Nutrition', 'Osteodystrophy', 'Anemia' and 'Diabetes' based on last value of month; b) BP's and #L processed are average of all values for month; c) Access data takes last access of month; d) Values for SGA and 'Infection Control' use most recent result.

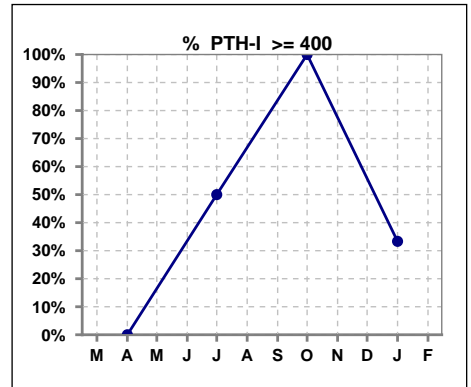
Lab methodology for PTH changed January 2012

**III. OSTEODYSTROPHY**

	Mar	Apr	May	Jun	Jul	Aug	Sep	Oct	Nov	Dec	Jan	Feb
# PO4	1	2	2	5	3	1	1	3	4	3	3	4
# PO4 <= 3.5	0	1	0	1	0	0	0	0	0	0	1	0
Pop. Mean	4.3	3.4	5.9	6.8	7.1	7.3	5.4	6.0	6.6	5.8	5.4	5.6
Std. Deviation	0	1.70	1.63	1.96	3.25	0	0	1.50	1.09	0.26	1.91	1.24
% PO4 <= 3.5	0%	50%	0%	20%	0%	0%	0%	0%	0%	0%	33%	0%



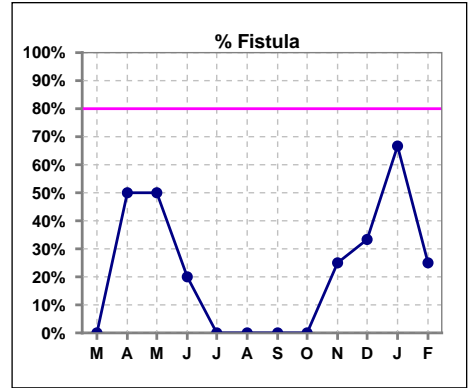
	Mar	Apr	May	Jun	Jul	Aug	Sep	Oct	Nov	Dec	Jan	Feb
# PTH-I		2			2			3			3	
# PTH-I >= 400		0			1			3			1	
Pop. Mean		188			402			865			554	
Std. Deviation		65			18			384			353	
% PTH-I >= 400		0%			50%			100%			33%	



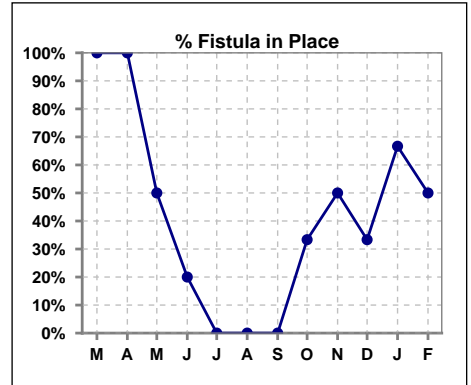
Methodology: a) All labs for 'Adequacy of Dialysis', 'Nutrition', 'Osteodystrophy', 'Anemia' and 'Diabetes' based on last value of month; b) BP's and #L processed are average of all values for month; c) Access data takes last access of month; d) Values for SGA and 'Infection Control' use most recent result.

**IV. ACCESS**

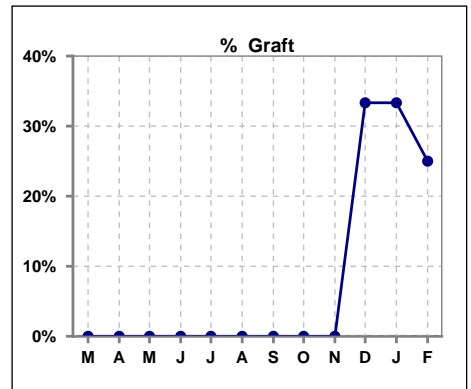
	Mar	Apr	May	Jun	Jul	Aug	Sep	Oct	Nov	Dec	Jan	Feb
# Access	1	2	2	5	3	1	1	3	4	3	3	4
# Fistula	0	1	1	1	0	0	0	0	1	1	2	1
% Fistula	0%	50%	50%	20%	0%	0%	0%	0%	25%	33%	67%	25%



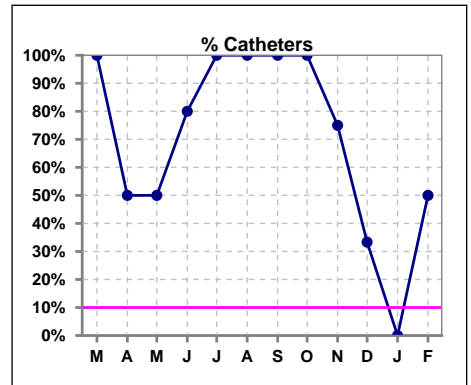
	Mar	Apr	May	Jun	Jul	Aug	Sep	Oct	Nov	Dec	Jan	Feb
# Patient	1	2	2	5	3	1	1	3	4	3	3	4
# Fistula in Place	1	2	1	1	0	0	0	1	2	1	2	2
% Fistula in Place	100%	100%	50%	20%	0%	0%	0%	33%	50%	33%	67%	50%



	Mar	Apr	May	Jun	Jul	Aug	Sep	Oct	Nov	Dec	Jan	Feb
# Access	1	2	2	5	3	1	1	3	4	3	3	4
# Graft	0	0	0	0	0	0	0	0	0	1	1	1
% Graft	0%	0%	0%	0%	0%	0%	0%	0%	0%	33%	33%	25%



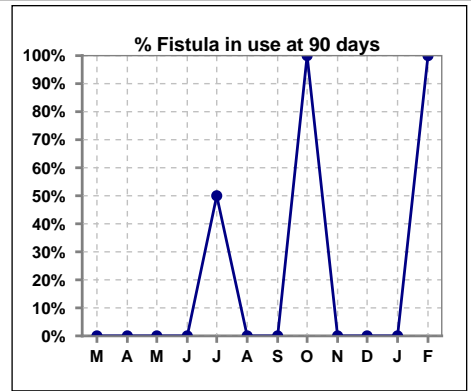
	Mar	Apr	May	Jun	Jul	Aug	Sep	Oct	Nov	Dec	Jan	Feb
# Access	1	2	2	5	3	1	1	3	4	3	3	4
# Catheters	1	1	1	4	3	1	1	3	3	1	0	2
% Catheters	100%	50%	50%	80%	100%	100%	100%	100%	75%	33%	0%	50%



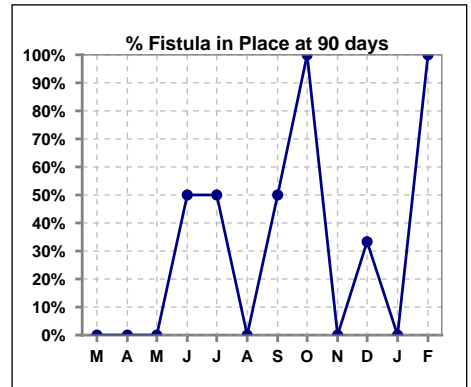
Methodology: a) All labs for 'Adequacy of Dialysis', 'Nutrition', 'Osteodystrophy', 'Anemia' and 'Diabetes' based on last value of month; b) BP's and #L processed are average of all values for month; c) Access data takes last access of month; d) Values for SGA and 'Infection Control' use most recent result.

**IV. ACCESS - CONT. Access at 90 days for those patients that reached 90 days within the month.**

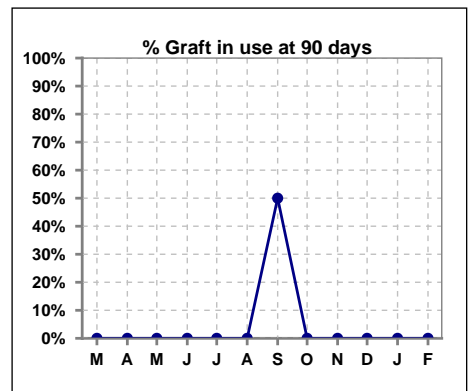
	Mar	Apr	May	Jun	Jul	Aug	Sep	Oct	Nov	Dec	Jan	Feb
# Patient	0	0	0	2	2	0	2	1	0	3	1	2
# Fistula in use	0	0	0	0	1	0	0	1	0	0	0	2
% Fistula in use	0%	0%	0%	0%	50%	0%	0%	100%	0%	0%	0%	100%



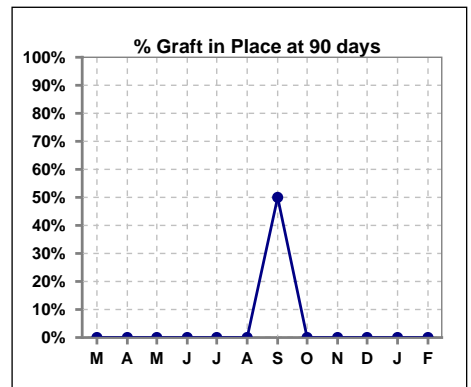
	Mar	Apr	May	Jun	Jul	Aug	Sep	Oct	Nov	Dec	Jan	Feb
# Patient	0	0	0	2	2	0	2	1	0	3	1	2
# Fistula in Place	0	0	0	1	1	0	1	1	0	1	0	2
% Fistula in Place	0%	0%	0%	50%	50%	0%	50%	100%	0%	33%	0%	100%



	Mar	Apr	May	Jun	Jul	Aug	Sep	Oct	Nov	Dec	Jan	Feb
# Patient	0	0	0	2	2	0	2	1	0	3	1	2
# Graft in use	0	0	0	0	0	0	1	0	0	0	0	0
% Graft in use	0%	0%	0%	0%	0%	0%	50%	0%	0%	0%	0%	0%



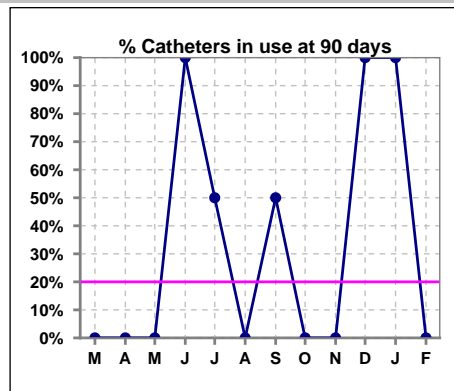
	Mar	Apr	May	Jun	Jul	Aug	Sep	Oct	Nov	Dec	Jan	Feb
# Patient	0	0	0	2	2	0	2	1	0	3	1	2
# Graft in Place	0	0	0	0	0	0	1	0	0	0	0	0
% Graft in Place	0%	0%	0%	0%	0%	0%	50%	0%	0%	0%	0%	0%



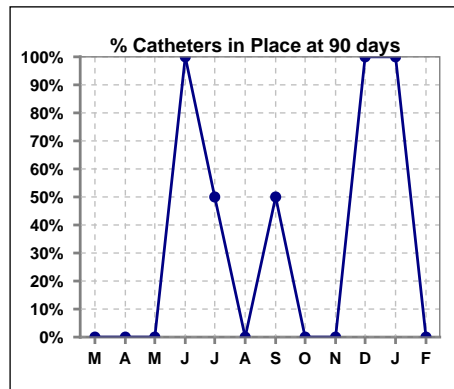
Methodology: a) All labs for 'Adequacy of Dialysis', 'Nutrition', 'Osteodystrophy', 'Anemia' and 'Diabetes' based on last value of month; b) BP's and #L processed are average of all values for month; c) Access data takes last access of month; d) Values for SGA and 'Infection Control' use most recent result.

**IV. ACCESS - CONT. Access at 90 days for those patients that reached 90 days within the month.**

	Mar	Apr	May	Jun	Jul	Aug	Sep	Oct	Nov	Dec	Jan	Feb
# Patient	0	0	0	2	2	0	2	1	0	3	1	2
# Catheters in use	0	0	0	2	1	0	1	0	0	3	1	0
% Catheters in use	0%	0%	0%	100%	50%	0%	50%	0%	0%	100%	100%	0%



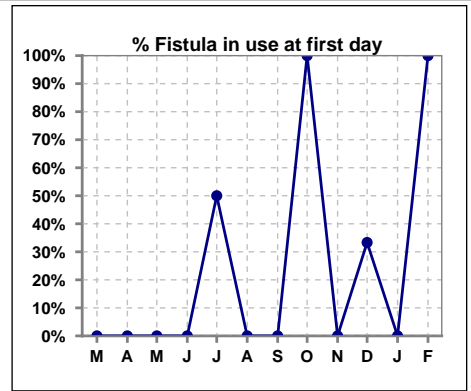
	Mar	Apr	May	Jun	Jul	Aug	Sep	Oct	Nov	Dec	Jan	Feb
# Patient	0	0	0	2	2	0	2	1	0	3	1	2
# Catheters in Place	0	0	0	2	1	0	1	0	0	3	1	0
% Catheters in Place	0%	0%	0%	100%	50%	0%	50%	0%	0%	100%	100%	0%



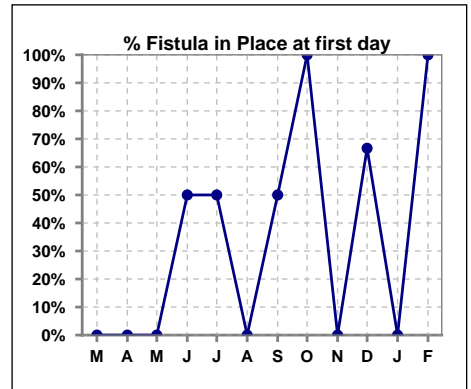
Methodology: a) All labs for 'Adequacy of Dialysis', 'Nutrition', 'Osteodystrophy', 'Anemia' and 'Diabetes' based on last value of month; b) BP's and #L processed are average of all values for month; c) Access data takes last access of month; d) Values for SGA and 'Infection Control' use most recent result.

**IV. ACCESS - CONT. Access at first day for those patients that reached 90 days within the month.**

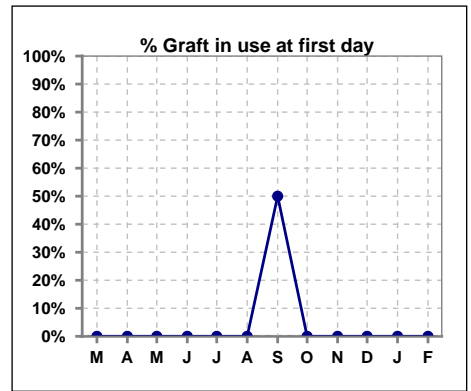
	Mar	Apr	May	Jun	Jul	Aug	Sep	Oct	Nov	Dec	Jan	Feb
# Patient	0	0	0	2	2	0	2	1	0	3	1	2
# Fistula in use	0	0	0	0	1	0	0	1	0	1	0	2
% Fistula in use	0%	0%	0%	0%	50%	0%	0%	100%	0%	33%	0%	100%



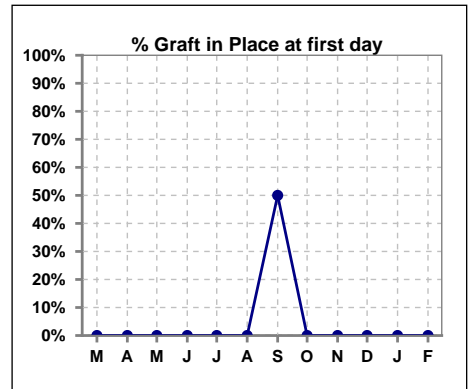
	Mar	Apr	May	Jun	Jul	Aug	Sep	Oct	Nov	Dec	Jan	Feb
# Patient	0	0	0	2	2	0	2	1	0	3	1	2
# Fistula in Place	0	0	0	1	1	0	1	1	0	2	0	2
% Fistula in Place	0%	0%	0%	50%	50%	0%	50%	100%	0%	67%	0%	100%



	Mar	Apr	May	Jun	Jul	Aug	Sep	Oct	Nov	Dec	Jan	Feb
# Patient	0	0	0	2	2	0	2	1	0	3	1	2
# Graft in use	0	0	0	0	0	0	1	0	0	0	0	0
% Graft in use	0%	0%	0%	0%	0%	0%	50%	0%	0%	0%	0%	0%



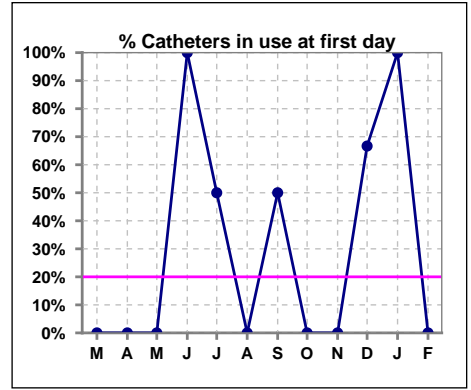
	Mar	Apr	May	Jun	Jul	Aug	Sep	Oct	Nov	Dec	Jan	Feb
# Patient	0	0	0	2	2	0	2	1	0	3	1	2
# Graft in Place	0	0	0	0	0	0	1	0	0	0	0	0
% Graft in Place	0%	0%	0%	0%	0%	0%	50%	0%	0%	0%	0%	0%



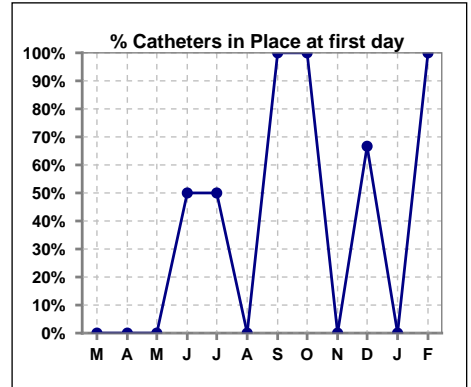
Methodology: a) All labs for 'Adequacy of Dialysis', 'Nutrition', 'Osteodystrophy', 'Anemia' and 'Diabetes' based on last value of month; b) BP's and #L processed are average of all values for month; c) Access data takes last access of month; d) Values for SGA and 'Infection Control' use most recent result.

**IV. ACCESS - CONT. Access at first day for those patients that reached 90 days within the month.**

	Mar	Apr	May	Jun	Jul	Aug	Sep	Oct	Nov	Dec	Jan	Feb
# Patient	0	0	0	2	2	0	2	1	0	3	1	2
# Catheters in use	0	0	0	2	1	0	1	0	0	2	1	0
% Catheters in use	0%	0%	0%	100%	50%	0%	50%	0%	0%	67%	100%	0%



	Mar	Apr	May	Jun	Jul	Aug	Sep	Oct	Nov	Dec	Jan	Feb
# Patient	0	0	0	2	2	0	2	1	0	3	1	2
# Catheters in Place	0	0	0	1	1	0	2	1	0	2	0	2
% Catheters in Place	0%	0%	0%	50%	50%	0%	100%	100%	0%	67%	0%	100%



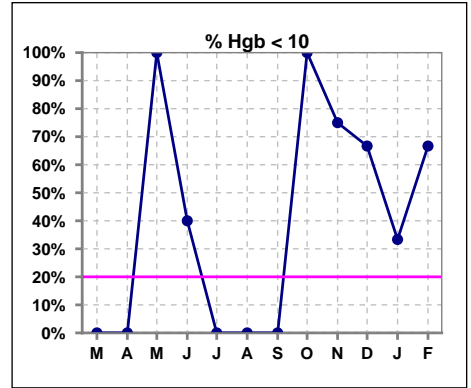
Methodology: a) All labs for 'Adequacy of Dialysis', 'Nutrition', 'Osteodystrophy', 'Anemia' and 'Diabetes' based on last value of month; b) BP's and #L processed are average of all values for month; c) Access data takes last access of month; d) Values for SGA and 'Infection Control' use most recent result.



**V. ANEMIA**

	Mar	Apr	May	Jun	Jul	Aug	Sep	Oct	Nov	Dec	Jan	Feb
# Hgb	0	2	2	5	3	1	1	3	4	3	3	3
# Hgb <= 10	0	0	2	2	0	0	0	3	3	2	1	2
Pop. Mean	0	10.4	9.6	9.7	11.3	10.8	10.2	9.5	9.7	8.5	9.5	9.5
Std. Deviation	0	0.4	0.6	1.7	0.1	0	0	0.6	0.8	1.5	1.4	0.9
<b>% Hgb &lt;= 10</b>	0%	0%	100%	40%	0%	0%	0%	100%	75%	67%	33%	67%

Note: Excludes patients who received no ESA in month.



	Mar	Apr	May	Jun	Jul	Aug	Sep	Oct	Nov	Dec	Jan	Feb
# Hgb	0	2	2	5	3	1	1	3	4	3	3	3
# Hgb >= 12	0	0	0	0	0	0	0	0	0	0	0	0
Pop. Mean	0	10.4	9.6	9.7	11.3	10.8	10.2	9.5	9.7	8.5	9.5	9.5
Std. Deviation	0	0.4	0.6	1.7	0.1	0	0	0.6	0.8	1.5	1.4	0.9
<b>% Hgb &gt;= 12</b>	0%	0%	0%	0%	0%	0%	0%	0%	0%	0%	0%	0%

Note: Excludes patients who received no ESA in month.

