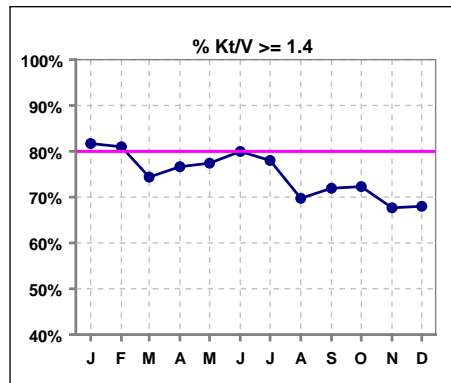


I. ADEQUACY OF DIALYSIS

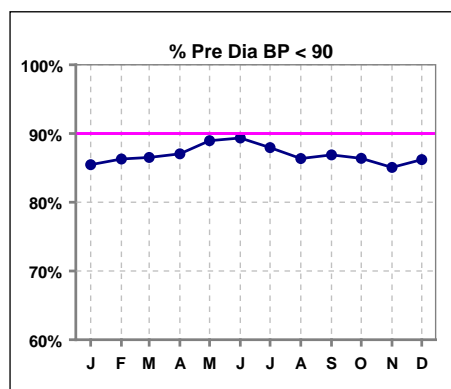
	Jan	Feb	Mar	Apr	May	Jun	Jul	Aug	Sep	Oct	Nov	Dec
# Kt/V	1000	999	991	993	987	978	1041	1008	980	971	965	950
# Kt/V >= 1.4	817	809	737	761	764	782	812	703	705	702	653	646
Pop. Mean =	1.68	1.67	1.59	1.64	1.64	1.66	1.62	1.53	1.54	1.56	1.52	1.53
Std. Deviation =	0.36	0.35	0.35	0.40	0.39	0.34	0.36	0.51	0.31	0.35	0.35	0.34
Network Mean =	1.59	1.59	1.59	1.59	1.59	1.59	1.59	1.59	1.59	1.59	1.59	1.59
Natl. Mean =												
% Kt/V >= 1.4	82%	81%	74%	77%	77%	80%	78%	70%	72%	72%	68%	68%
**% Kt/V >= 1.2	94%	94%	90%	91%	92%	92%	92%	87%	89%	90%	87%	87%

** As of Apr. '04

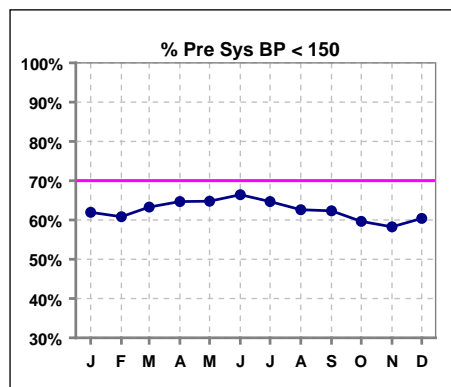


Blood Pressure Control (Pre)

	Jan	Feb	Mar	Apr	May	Jun	Jul	Aug	Sep	Oct	Nov	Dec
# Pre Dia BP	1025	1021	1016	1011	1005	995	1062	1019	1022	1021	1018	1000
# Pre Dia BP < 90	876	881	879	880	894	889	934	880	888	882	866	862
Pop. Mean =	77	76	76	76	75	75	75	76	76	76	76	76
Std. Deviation =	15.0	13.7	13.9	13.9	12.6	12.9	13.3	13.9	13.5	14.2	13.8	13.7
Network Mean =												
Natl. Mean =												
% Pre Dia BP < 90	85%	86%	87%	87%	89%	89%	88%	86%	87%	86%	85%	86%



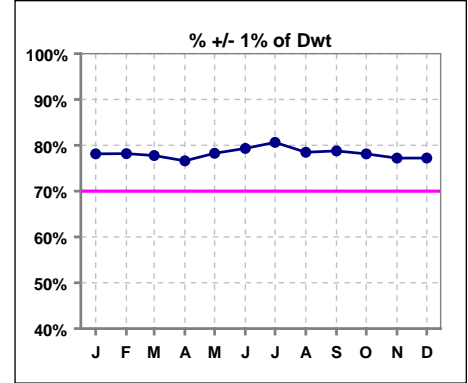
	Jan	Feb	Mar	Apr	May	Jun	Jul	Aug	Sep	Oct	Nov	Dec
# Pre Sys BP	1025	1021	1016	1011	1005	995	1062	1019	1022	1021	1018	1000
# Pre Sys BP < 150	635	621	643	654	651	661	687	638	637	609	593	604
Pop. Mean =	144	145	144	143	142	142	142	143	144	145	145	145
Std. Deviation =	19.9	20.4	19.9	20.5	20.8	20.3	20.4	21.3	21.3	21.1	21.1	21.4
Network Mean =												
Natl. Mean =												
% Pre Sys BP < 150	62%	61%	63%	65%	65%	66%	65%	63%	62%	60%	58%	60%



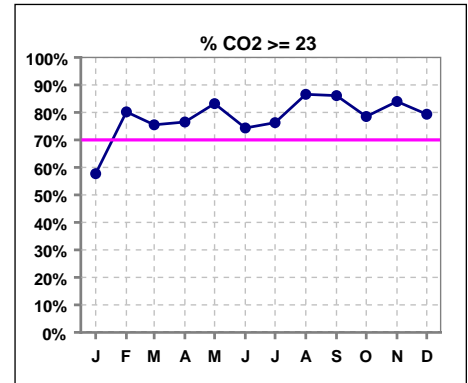
*Methodology: a) Monthly values based on patient's monthly average of all values present for the month; b) Quarter values are average of all values for quarter; c) Values not averaged use last value present at months end.

I. ADEQUACY OF DIALYSIS - CONT.

	Jan	Feb	Mar	Apr	May	Jun	Jul	Aug	Sep	Oct	Nov	Dec
# Post/Dwt	1029	1022	1021	1013	1012	1001	1064	1027	1027	1024	1022	1005
# +/- 1% of Dwt	804	799	794	776	792	794	858	806	809	800	789	776
% +/- 1% of Dwt	78%	78%	78%	77%	78%	79%	81%	78%	79%	78%	77%	77%



	Jan	Feb	Mar	Apr	May	Jun	Jul	Aug	Sep	Oct	Nov	Dec
# CO2	1017	1015	1004	1005	1000	986	1058	1014	1001	996	986	973
# CO2 >= 23	587	814	758	769	832	733	807	878	862	782	828	772
Pop. Mean =	23	25	24	25	25	24	24	25	25	25	25	25
Std. Deviation =	3.44	3.04	3.03	3.16	2.90	2.95	3.17	2.62	2.82	2.99	2.87	3.02
Network Mean =												
Natl. Mean =												
% CO2 >= 23	58%	80%	75%	77%	83%	74%	76%	87%	86%	79%	84%	79%



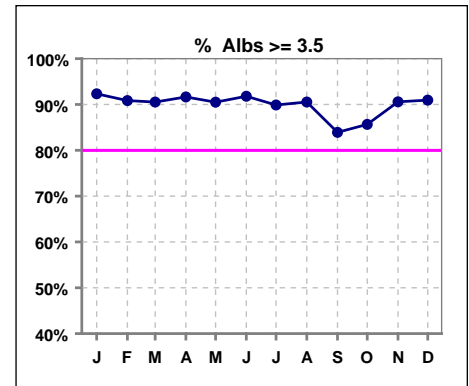
*Methodology: a) Monthly values based on patient's monthly average of all values present for the month; b) Quarter values are average of all values for quarter; c) Values not averaged use last value present at months end.

*Albumin values use BCG method - as of July 2001

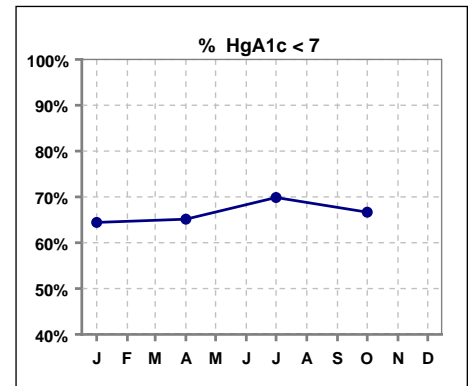
II. NUTRITION

	Jan	Feb	Mar	Apr	May	Jun	Jul	Aug	Sep	Oct	Nov	Dec
# Albumin	1017	1016	1003	1005	1000	987	1058	1014	1001	997	987	972
# Albumin >= 3.5	939	923	908	921	905	906	951	918	840	854	894	884
Pop. Mean =	4.0	4.0	4.0	4.0	4.0	4.0	3.9	3.9	3.8	3.8	3.9	3.9
Std. Deviation =	0.37	0.40	0.39	0.41	0.40	0.37	0.38	0.36	0.37	0.39	0.38	0.37
Network Mean =	3.4	3.4	3.4	3.4	3.4	3.4	3.4	3.4	3.4	3.4	3.4	3.4
Natl. Mean =	3.8	3.8	3.8	3.8	3.8	3.8	3.8	3.8	3.8	3.8	3.8	3.8
% Alb >= 3.5	92%	91%	91%	92%	91%	92%	90%	91%	84%	86%	91%	91%
% Alb >= 4.0	56%	61%	57%	58%	58%	57%	53%	50%	35%	43%	55%	53%
*Natl % >= 3.5-BCG	81%	81%	81%	81%	81%	81%	81%	81%	81%	81%	81%	81%
*Natl. % >= 4.0-BCG	39%	39%	39%	39%	39%	39%	39%	39%	39%	39%	39%	39%

*Figures for 2004



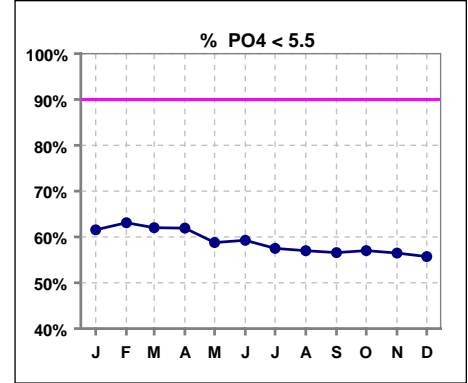
	Jan	Feb	Mar	Apr	May	Jun	Jul	Aug	Sep	Oct	Nov	Dec
# HgA1c	447			436			458			333		
# HgA1c < 7	288			284			320			222		
Pop. Mean =	6.7			6.6			6.5			6.7		
Std. Deviation =	1.49			1.52			1.48			1.59		
Network Mean =												
Natl. Mean =												
% HgA1c < 7	64%			65%			70%			67%		



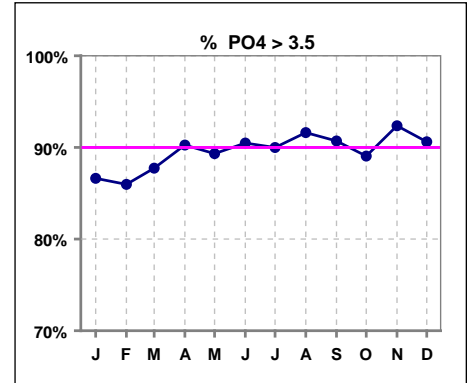
*Methodology: a) Monthly values based on patient's monthly average of all values present for the month; b) Quarter values are average of all values for quarter; c) Values not averaged use last value present at months end.

III. OSTEODYSTROPHY

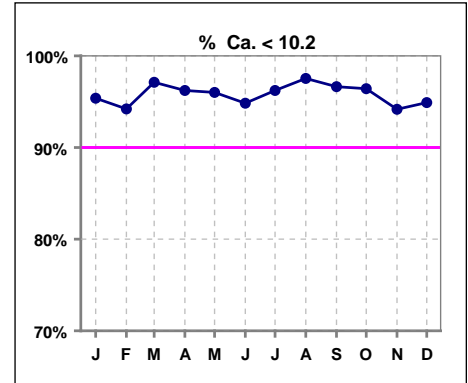
	Jan	Feb	Mar	Apr	May	Jun	Jul	Aug	Sep	Oct	Nov	Dec
# PO4	1017	1019	1003	1006	1002	987	1059	1014	1011	1005	995	980
# PO4 < 5.5	626	643	622	623	589	585	609	578	572	573	562	546
Pop. Mean =	5.1	5.1	5.2	5.2	5.3	5.3	5.3	5.4	5.4	5.4	5.4	5.4
Std. Deviation =	1.47	1.48	1.49	1.47	1.47	1.85	1.51	1.49	1.54	1.56	1.54	1.59
Network Mean =												
Natl. Mean =												
% PO4 < 5.5	62%	63%	62%	62%	59%	59%	58%	57%	57%	57%	56%	56%



	Jan	Feb	Mar	Apr	May	Jun	Jul	Aug	Sep	Oct	Nov	Dec
# PO4	1017	1019	1003	1006	1002	987	1059	1014	1011	1005	995	980
# PO4 > 3.5	881	876	880	908	895	893	953	929	917	895	919	888
Pop. Mean =	5.1	5.1	5.2	5.2	5.3	5.3	5.3	5.4	5.4	5.4	5.4	5.4
Std. Deviation =	1.47	1.48	1.49	1.47	1.47	1.85	1.51	1.49	1.54	1.56	1.54	1.59
Network Mean =												
Natl. Mean =												
% PO4 > 3.5	87%	86%	88%	90%	89%	90%	90%	92%	91%	89%	92%	91%



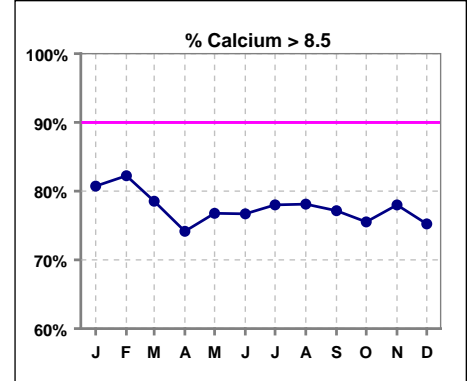
	Jan	Feb	Mar	Apr	May	Jun	Jul	Aug	Sep	Oct	Nov	Dec
# Calcium	1017	1019	1006	1006	1003	987	1059	1014	1011	1005	995	981
# Calcium < 10.2	970	960	977	968	963	936	1019	989	977	969	937	931
Pop. Mean =	9.1	9.1	9.0	9.0	9.0	9.0	9.0	9.0	9.0	9.0	9.1	9.0
Std. Deviation =	0.68	0.69	0.65	0.68	0.70	0.74	0.69	0.66	0.65	0.68	0.72	0.71
Network Mean =												
Natl. Mean =												
% Ca < 10.2	95%	94%	97%	96%	96%	95%	96%	98%	97%	96%	94%	95%



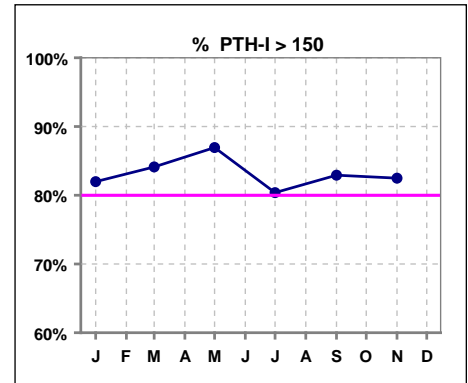
*Methodology: a) Monthly values based on patient's monthly average of all values present for the month; b) Quarter values are average of all values for quarter; c) Values not averaged use last value present at months end.

III. OSTEODYSTROPHY - CONT.

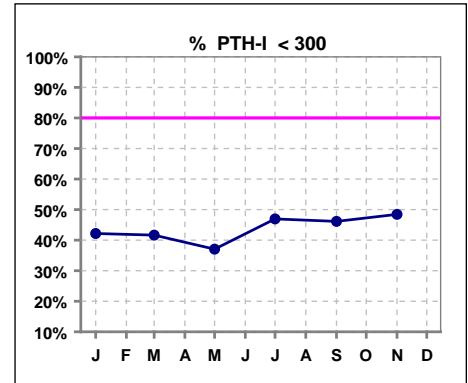
	Jan	Feb	Mar	Apr	May	Jun	Jul	Aug	Sep	Oct	Nov	Dec
# Calcium	1017	1019	1006	1006	1003	987	1059	1014	1011	1005	995	981
# Calcium > 8.5	821	838	790	746	770	757	826	792	780	759	776	738
Pop. Mean =	9.1	9.1	9.0	9.0	9.0	9.0	9.0	9.0	9.0	9.0	9.1	9.0
Std. Deviation =	0.68	0.69	0.65	0.68	0.70	0.74	0.69	0.66	0.65	0.68	0.72	0.71
Network Mean =												
Natl. Mean =												
% Calcium > 8.5	81%	82%	79%	74%	77%	77%	78%	78%	77%	76%	78%	75%



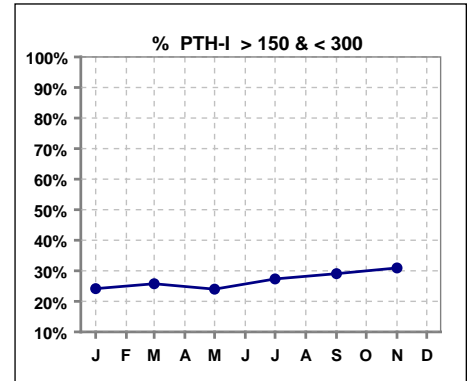
	Jan	Feb	Mar	Apr	May	Jun	Jul	Aug	Sep	Oct	Nov	Dec
# PTH-I	1010		850		842		1050		843		805	
# PTH-I > 150	828		715		732		844		699		664	
Pop. Mean =	472		488		526		443		445		432	
Std. Deviation =	468		470		473		420		435		421	
Network Mean =												
Natl. Mean =												
% PTH-I > 150	82%		84%		87%		80%		83%		82%	



	Jan	Feb	Mar	Apr	May	Jun	Jul	Aug	Sep	Oct	Nov	Dec
# PTH-I	1010		850		842		1050		843		805	
# PTH-I < 300	426		354		312		493		389		390	
Pop. Mean =	472		488		526		443		445		432	
Std. Deviation =	468		470		473		420		435		421	
Network Mean =												
Natl. Mean =												
% PTH-I < 300	42%		42%		37%		47%		46%		48%	



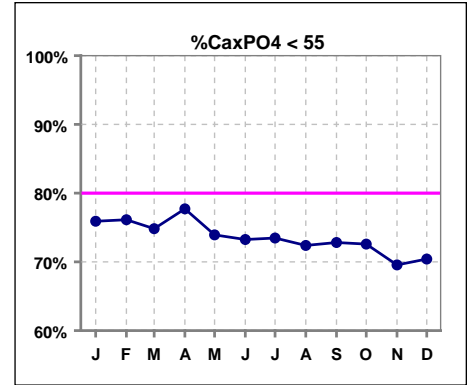
	Jan	Feb	Mar	Apr	May	Jun	Jul	Aug	Sep	Oct	Nov	Dec
# PTH-I	1010		850		842		1050		843		805	
# PTH-I >150 & <300	244		219		202		287		245		249	
Pop. Mean =	472		488		526		443		445		432	
Std. Deviation =	468		470		473		420		435		421	
Network Mean =												
Natl. Mean =												
% PTH-I >150 & <300	24%		26%		24%		27%		29%		31%	



*Methodology: a) Monthly values based on patient's monthly average of all values present for the month; b) Quarter values are average of all values for quarter; c) Values not averaged use last value present at months end.

III. OSTEODYSTROPHY - CONT.

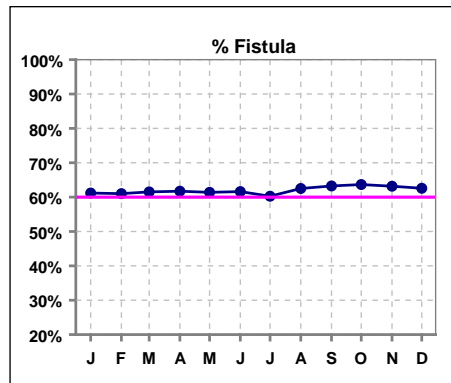
	Jan	Feb	Mar	Apr	May	Jun	Jul	Aug	Sep	Oct	Nov	Dec
# Ca x PO4	1017	1018	1001	1005	1001	987	1059	1014	1008	1003	992	980
# Ca x PO4 < 55	772	775	749	781	740	723	778	734	734	728	690	690
Pop. Mean =	46.6	46.7	46.6	47.1	47.7	48.2	47.9	48.3	48.2	48.0	49.1	48.6
Std. Deviation =	13.4	13.8	13.7	13.5	13.6	14.2	13.6	13.0	13.5	13.8	14.1	14.2
Network Mean =												
Natl. Mean =												
% CaxPO4 < 55	76%	76%	75%	78%	74%	73%	73%	72%	73%	73%	70%	70%



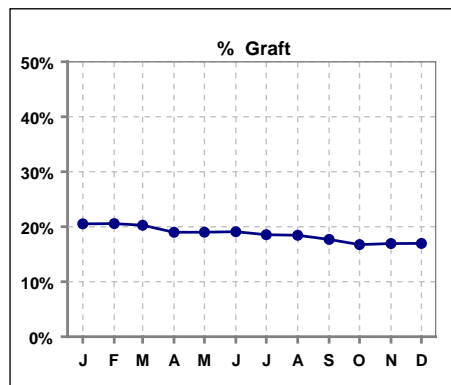
*Methodology: a) Monthly values based on patient's monthly average of all values present for the month; b) Quarter values are average of all values for quarter; c) Values not averaged use last value present at months end.

IV. ACCESS

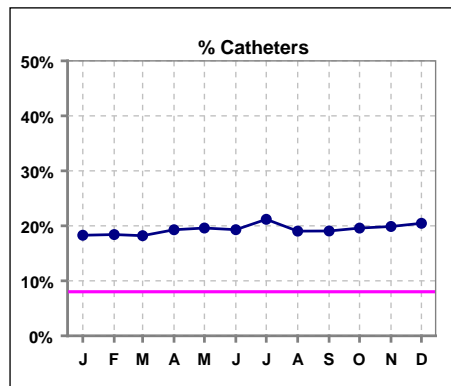
	Jan	Feb	Mar	Apr	May	Jun	Jul	Aug	Sep	Oct	Nov	Dec
# Access	1028	1021	1016	1011	1005	995	1062	1019	1023	1021	1021	1002
# Fistula	629	623	625	624	617	613	640	637	647	650	645	627
Network % - 2004	55%	55%	55%	55%	55%	55%	55%	55%	55%	55%	55%	55%
Natl. % - 2004	35%	35%	35%	35%	35%	35%	35%	35%	35%	35%	35%	35%
% Fistula	61%	61%	62%	62%	61%	62%	60%	63%	63%	64%	63%	63%



	Jan	Feb	Mar	Apr	May	Jun	Jul	Aug	Sep	Oct	Nov	Dec
# Access	1028	1021	1016	1011	1005	995	1062	1019	1023	1021	1021	1002
# Graft	211	210	206	192	191	190	197	188	181	171	173	170
Network %												
Natl. %												
% Graft	21%	21%	20%	19%	19%	19%	19%	18%	18%	17%	17%	17%



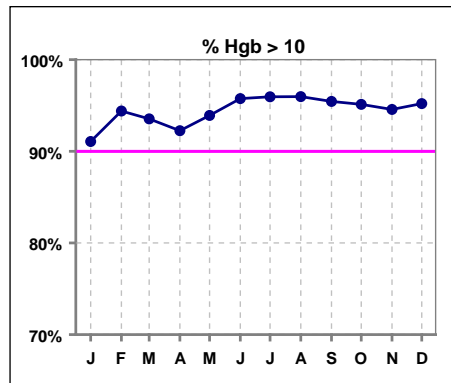
	Jan	Feb	Mar	Apr	May	Jun	Jul	Aug	Sep	Oct	Nov	Dec
# Access	1028	1021	1016	1011	1005	995	1062	1019	1023	1021	1021	1002
# Catheters	188	188	185	195	197	192	225	194	195	200	203	205
Network %												
Natl. % - 2004	27%	27%	27%	27%	27%	27%	27%	27%	27%	27%	27%	27%
% Catheters	18%	18%	18%	19%	20%	19%	21%	19%	19%	20%	20%	20%



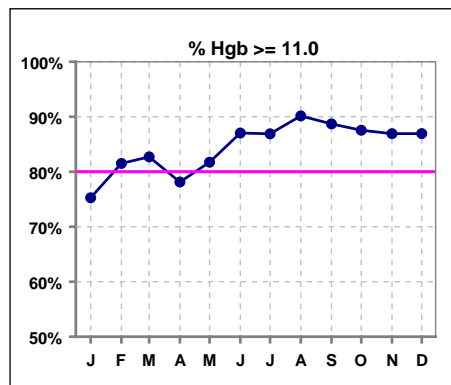
*Methodology: a) Monthly values based on patient's monthly average of all values present for the month; b) Quarter values are average of all values for quarter; c) Values not averaged use last value present at months end.

V. ANEMIA

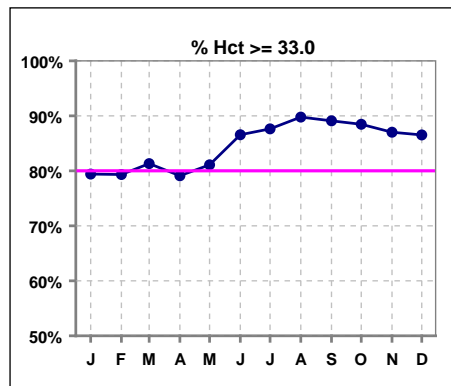
	Jan	Feb	Mar	Apr	May	Jun	Jul	Aug	Sep	Oct	Nov	Dec
# Hgb	1019	1017	1006	1006	1002	988	1061	1016	1009	1004	994	980
# Hgb > 10.0	928	960	941	928	941	946	1018	975	963	955	940	933
Pop. Mean =	11.7	12.0	12.0	11.9	12.1	12.4	12.5	12.7	12.8	12.6	12.6	12.5
Std. Deviation =	1.3	1.3	1.3	1.3	1.3	1.4	1.4	1.4	1.5	1.5	1.5	1.5
Network Mean =	11.8	11.8	11.8	11.8	11.8	11.8	11.8	11.8	11.8	11.8	11.8	11.8
Natl. Mean =												
% Hgb > 10.0	91%	94%	94%	92%	94%	96%	96%	96%	95%	95%	95%	95%



	Jan	Feb	Mar	Apr	May	Jun	Jul	Aug	Sep	Oct	Nov	Dec
# Hgb	1019	1017	1006	1006	1002	988	1061	1016	1009	1004	994	980
# Hgb >= 11.0	767	829	832	786	819	860	922	916	895	879	864	852
Pop. Mean =	11.7	12.0	12.0	11.9	12.1	12.4	12.5	12.7	12.8	12.6	12.6	12.5
Std. Deviation =	1.3	1.3	1.3	1.3	1.3	1.4	1.4	1.4	1.5	1.5	1.5	1.5
Network Mean =	11.8	11.8	11.8	11.8	11.8	11.8	11.8	11.8	11.8	11.8	11.8	11.8
Natl. Mean =												
% Hgb >= 11.0	75%	82%	83%	78%	82%	87%	87%	90%	89%	88%	87%	87%
% Natl. >= 11 2004	80%	80%	80%	80%	80%	80%	80%	80%	80%	80%	80%	80%



	Jan	Feb	Mar	Apr	May	Jun	Jul	Aug	Sep	Oct	Nov	Dec
# Hct	1020	1016	1006	1005	1005	990	1059	1017	1009	1006	994	980
# Hct >= 33.0	810	806	818	795	815	857	928	913	899	890	865	848
Pop. Mean =	36	36	36	36	36	38	38	38	39	38	38	38
Std. Deviation =	4.04	3.93	4.09	4.15	4.01	4.32	4.42	4.33	4.78	4.54	4.65	4.61
Network Mean =												
Natl. Mean =												
% Hct >= 33.0	79%	79%	81%	79%	81%	87%	88%	90%	89%	88%	87%	87%

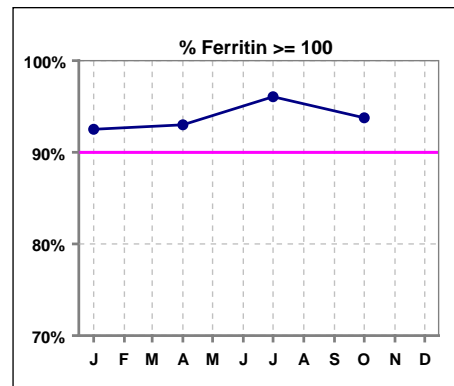


*Methodology: a) Monthly values based on patient's monthly average of all values present for the month; b) Quarter values are average of all values for quarter; c) Values not averaged use last value present at months end.

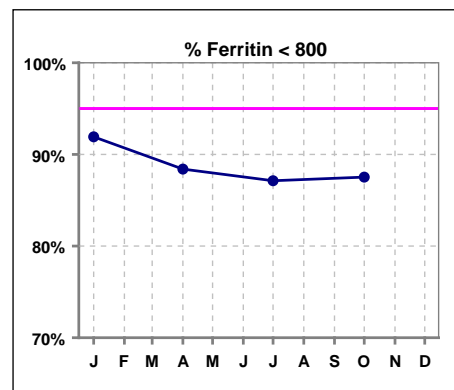
V. ANEMIA - CONT.

Iron Profile

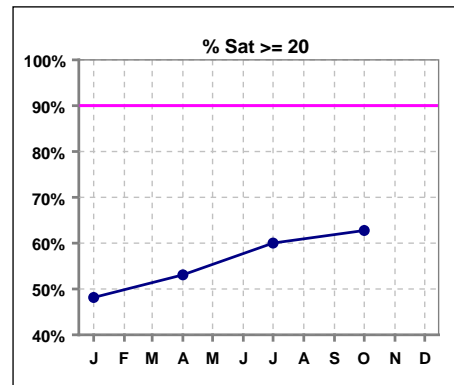
	Jan	Feb	Mar	Apr	May	Jun	Jul	Aug	Sep	Oct	Nov	Dec
# Ferritin	1015			1000			1041			994		
# Ferritin >= 100	939			930			1000			932		
Pop. Mean =	428			461			486			480		
Std. Deviation =	340			342			613			367		
Network Mean =												
Natl. Mean =												
% Ferritin >= 100	93%			93%			96%			94%		
%Natl. >=100 2004	94%			94%			94%			94%		



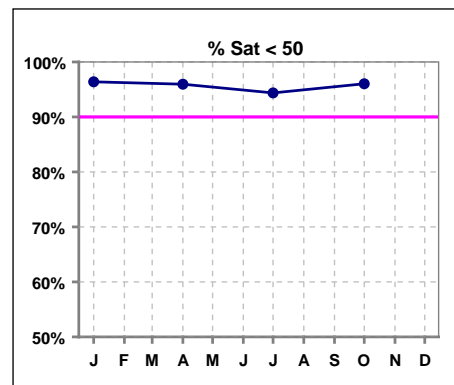
	Jan	Feb	Mar	Apr	May	Jun	Jul	Aug	Sep	Oct	Nov	Dec
# Ferritin	1015			1000			1041			994		
# Ferritin < 800	933			884			907			870		
Pop. Mean =	428			461			486			480		
Std. Deviation =	340			342			613			367		
Network Mean =												
Natl. Mean =												
% Ferritin < 800	92%			88%			87%			88%		



	Jan	Feb	Mar	Apr	May	Jun	Jul	Aug	Sep	Oct	Nov	Dec
# % Sat	997			989			1048			983		
# % Sat >= 20	480			525			629			617		
Pop. Mean =	22			23			25			25		
Std. Deviation =	13			13			14			12		
Network Mean =												
Natl. Mean =												
% Sat% >= 20	48%			53%			60%			63%		
%Natl. >=20 2004	81%			81%			81%			81%		



	Jan	Feb	Mar	Apr	May	Jun	Jul	Aug	Sep	Oct	Nov	Dec
# % Sat	997			989			1048			983		
# % Sat < 50	961			949			989			944		
Pop. Mean =	22			23			25			25		
Std. Deviation =	13			13			14			12		
Network Mean =												
Natl. Mean =												
% Sat% < 50	96%			96%			94%			96%		



*Methodology: a) Monthly values based on patient's monthly average of all values present for the month; b) Quarter values are average of all values for quarter; c) Values not averaged use last value present at months end.