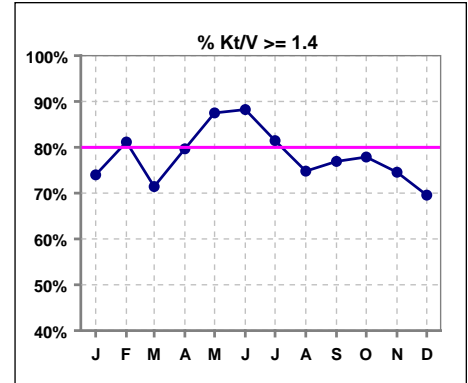


I. ADEQUACY OF DIALYSIS

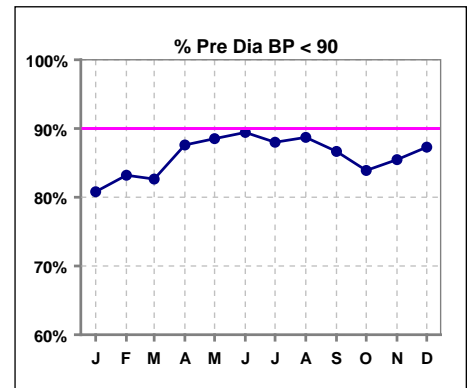
	Jan	Feb	Mar	Apr	May	Jun	Jul	Aug	Sep	Oct	Nov	Dec
# Kt/V	123	122	119	118	120	119	124	123	117	113	114	115
# Kt/V >= 1.4	91	99	85	94	105	105	101	92	90	88	85	80
Pop. Mean =	1.60	1.63	1.58	1.70	1.70	1.74	1.64	1.54	1.55	1.56	1.57	1.53
Std. Deviation =	0.31	0.31	0.30	0.46	0.38	0.35	0.27	0.28	0.34	0.24	0.34	0.30
Network Mean =	1.59	1.59	1.59	1.59	1.59	1.59	1.59	1.59	1.59	1.59	1.59	1.59
Natl. Mean =												
% Kt/V >= 1.4	74%	81%	71%	80%	88%	88%	81%	75%	77%	78%	75%	70%
**% Kt/V >= 1.2	93%	93%	89%	92%	98%	96%	94%	90%	92%	95%	92%	86%

** As of Apr. '04

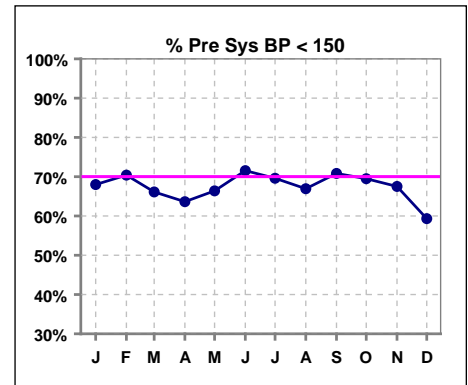


Blood Pressure Control (Pre)

	Jan	Feb	Mar	Apr	May	Jun	Jul	Aug	Sep	Oct	Nov	Dec
# Pre Dia BP	125	125	121	121	122	123	125	124	120	118	117	118
# Pre Dia BP < 90	101	104	100	106	108	110	110	110	104	99	100	103
Pop. Mean =	79	78	78	77	75	75	75	75	75	76	76	76
Std. Deviation =	14.5	12.9	13.8	16.0	12.5	11.7	12.1	13.2	13.0	16.2	14.8	13.9
Network Mean =												
Natl. Mean =												
% Pre Dia BP < 90	81%	83%	83%	88%	89%	89%	88%	89%	87%	84%	85%	87%



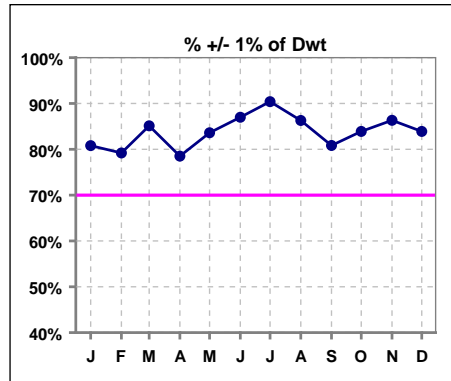
	Jan	Feb	Mar	Apr	May	Jun	Jul	Aug	Sep	Oct	Nov	Dec
# Pre Sys BP	125	125	121	121	122	123	125	124	120	118	117	118
# Pre Sys BP < 150	85	88	80	77	81	88	87	83	85	82	79	70
Pop. Mean =	141	141	142	142	140	140	140	139	139	140	141	142
Std. Deviation =	19.0	21.4	22.0	23.0	21.5	20.9	22.3	21.7	23.0	22.6	23.1	21.9
Network Mean =												
Natl. Mean =												
% Pre Sys BP < 150	68%	70%	66%	64%	66%	72%	70%	67%	71%	69%	68%	59%



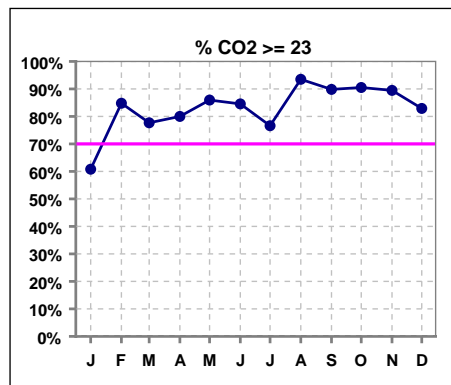
*Methodology: a) Monthly values based on patient's monthly average of all values present for the month; b) Quarter values are average of all values for quarter; c) Values not averaged use last value present at months end.

I. ADEQUACY OF DIALYSIS - CONT.

	Jan	Feb	Mar	Apr	May	Jun	Jul	Aug	Sep	Oct	Nov	Dec
# Post/Dwt	125	125	121	121	122	123	125	124	120	118	117	118
# +/- 1% of Dwt	101	99	103	95	102	107	113	107	97	99	101	99
% +/- 1% of Dwt	81%	79%	85%	79%	84%	87%	90%	86%	81%	84%	86%	84%



	Jan	Feb	Mar	Apr	May	Jun	Jul	Aug	Sep	Oct	Nov	Dec
# CO2	125	125	121	120	121	123	124	123	118	116	114	117
# CO2 >= 23	76	106	94	96	104	104	95	115	106	105	102	97
Pop. Mean =	23	25	24	25	25	25	24	26	26	25	26	25
Std. Deviation =	3.84	2.90	3.03	2.73	2.62	2.56	2.77	2.22	2.52	2.45	2.75	2.56
Network Mean =												
Natl. Mean =												
% CO2 >= 23	61%	85%	78%	80%	86%	85%	77%	93%	90%	91%	89%	83%



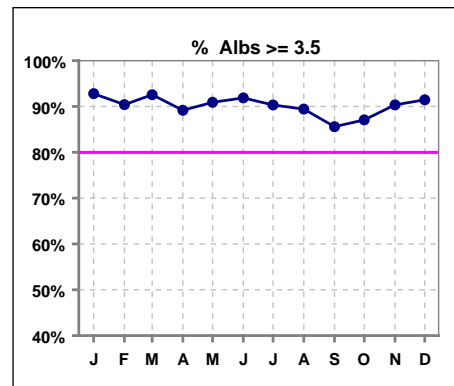
*Methodology: a) Monthly values based on patient's monthly average of all values present for the month; b) Quarter values are average of all values for quarter; c) Values not averaged use last value present at months end.

*Albumin values use BCG method - as of July 2001

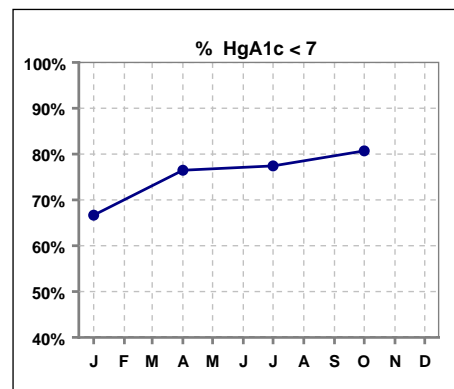
II. NUTRITION

	Jan	Feb	Mar	Apr	May	Jun	Jul	Aug	Sep	Oct	Nov	Dec
# Albumin	125	125	121	120	121	123	124	123	118	116	114	117
# Albumin >= 3.5	116	113	112	107	110	113	112	110	101	101	103	107
Pop. Mean =	4.0	4.0	4.0	4.0	4.0	4.0	3.9	3.9	3.8	3.9	3.9	4.0
Std. Deviation =	0.33	0.39	0.38	0.40	0.37	0.35	0.41	0.38	0.34	0.40	0.35	0.35
Network Mean =	3.4	3.4	3.4	3.4	3.4	3.4	3.4	3.4	3.4	3.4	3.4	3.4
Natl. Mean =	3.8	3.8	3.8	3.8	3.8	3.8	3.8	3.8	3.8	3.8	3.8	3.8
% Alb >= 3.5	93%	90%	93%	89%	91%	92%	90%	89%	86%	87%	90%	91%
% Alb >= 4.0	50%	57%	56%	58%	63%	55%	55%	50%	36%	47%	54%	54%
*Natl % >= 3.5-BCG	81%	81%	81%	81%	81%	81%	81%	81%	81%	81%	81%	81%
*Natl. % >= 4.0-BCG	39%	39%	39%	39%	39%	39%	39%	39%	39%	39%	39%	39%

*Figures for 2004



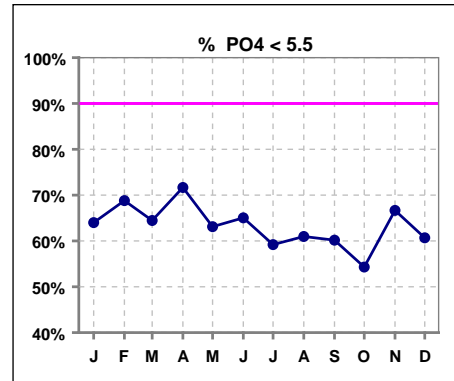
	Jan	Feb	Mar	Apr	May	Jun	Jul	Aug	Sep	Oct	Nov	Dec
# HgA1c	60			51			62			57		
# HgA1c < 7	40			39			48			46		
Pop. Mean =	6.6			6.3			6.4			6.3		
Std. Deviation =	1.36			1.41			1.29			1.38		
Network Mean =												
Natl. Mean =												
% HgA1c < 7	67%			76%			77%			81%		



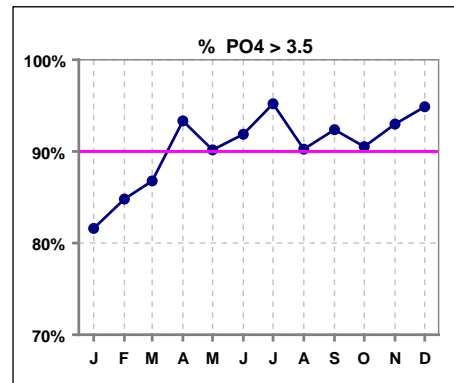
*Methodology: a) Monthly values based on patient's monthly average of all values present for the month; b) Quarter values are average of all values for quarter; c) Values not averaged use last value present at months end.

III. OSTEODYSTROPHY

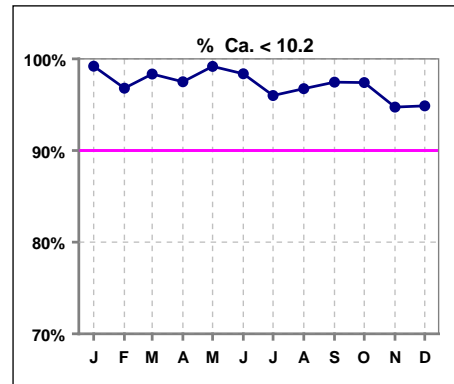
	Jan	Feb	Mar	Apr	May	Jun	Jul	Aug	Sep	Oct	Nov	Dec
# PO4	125	125	121	120	122	123	125	123	118	116	114	117
# PO4 < 5.5	80	86	78	86	77	80	74	75	71	63	76	71
Pop. Mean =	5.0	4.9	5.0	5.0	5.3	5.5	5.3	5.1	5.3	5.3	5.2	5.3
Std. Deviation =	1.39	1.16	1.29	1.23	1.53	3.55	1.32	1.41	1.44	1.33	1.37	1.31
Network Mean =												
Natl. Mean =												
% PO4 < 5.5	64%	69%	64%	72%	63%	65%	59%	61%	60%	54%	67%	61%



	Jan	Feb	Mar	Apr	May	Jun	Jul	Aug	Sep	Oct	Nov	Dec
# PO4	125	125	121	120	122	123	125	123	118	116	114	117
# PO4 > 3.5	102	106	105	112	110	113	119	111	109	105	106	111
Pop. Mean =	5.0	4.9	5.0	5.0	5.3	5.5	5.3	5.1	5.3	5.3	5.2	5.3
Std. Deviation =	1.39	1.16	1.29	1.23	1.53	3.55	1.32	1.41	1.44	1.33	1.37	1.31
Network Mean =												
Natl. Mean =												
% PO4 > 3.5	82%	85%	87%	93%	90%	92%	95%	90%	92%	91%	93%	95%



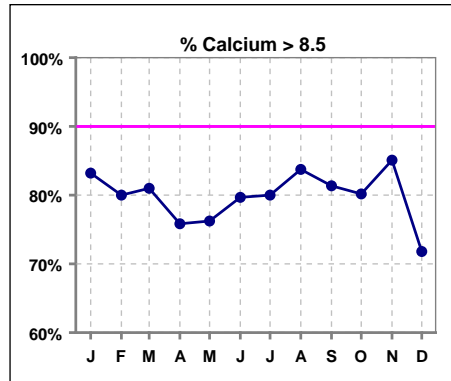
	Jan	Feb	Mar	Apr	May	Jun	Jul	Aug	Sep	Oct	Nov	Dec
# Calcium	125	125	121	120	122	123	125	123	118	116	114	117
# Calcium < 10.2	124	121	119	117	121	121	120	119	115	113	108	111
Pop. Mean =	9.0	9.1	9.1	9.0	9.0	9.1	9.0	9.1	9.0	9.0	9.1	8.9
Std. Deviation =	0.57	0.63	0.61	0.65	0.62	0.65	0.66	0.58	0.59	0.58	0.64	0.72
Network Mean =												
Natl. Mean =												
% Ca < 10.2	99%	97%	98%	98%	99%	98%	96%	97%	97%	97%	95%	95%



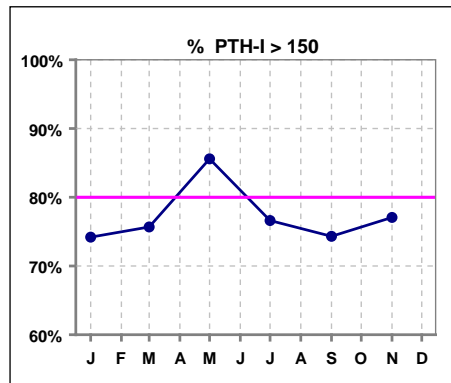
*Methodology: a) Monthly values based on patient's monthly average of all values present for the month; b) Quarter values are average of all values for quarter; c) Values not averaged use last value present at months end.

III. OSTEODYSTROPHY - CONT.

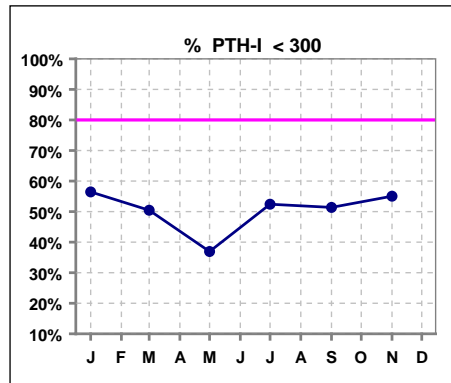
	Jan	Feb	Mar	Apr	May	Jun	Jul	Aug	Sep	Oct	Nov	Dec
# Calcium	125	125	121	120	122	123	125	123	118	116	114	117
# Calcium > 8.5	104	100	98	91	93	98	100	103	96	93	97	84
Pop. Mean =	9.0	9.1	9.1	9.0	9.0	9.1	9.0	9.1	9.0	9.0	9.1	8.9
Std. Deviation =	0.57	0.63	0.61	0.65	0.62	0.65	0.66	0.58	0.59	0.58	0.64	0.72
Network Mean =												
Natl. Mean =												
% Calcium > 8.5	83%	80%	81%	76%	76%	80%	80%	84%	81%	80%	85%	72%



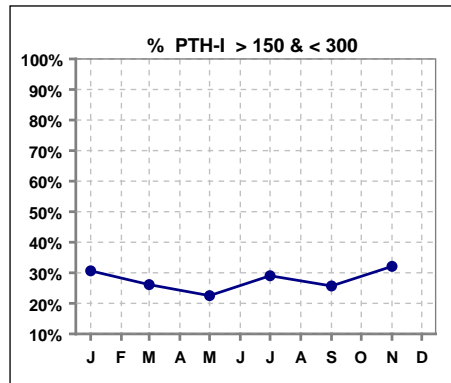
	Jan	Feb	Mar	Apr	May	Jun	Jul	Aug	Sep	Oct	Nov	Dec
# PTH-I	124		111		111		124		109		109	
# PTH-I > 150	92		84		95		95		81		84	
Pop. Mean =	359		384		451		381		366		356	
Std. Deviation =	313		312		334		337		295		289	
Network Mean =												
Natl. Mean =												
% PTH-I > 150	74%		76%		86%		77%		74%		77%	



	Jan	Feb	Mar	Apr	May	Jun	Jul	Aug	Sep	Oct	Nov	Dec
# PTH-I	124		111		111		124		109		109	
# PTH-I < 300	70		56		41		65		56		60	
Pop. Mean =	359		384		451		381		366		356	
Std. Deviation =	313		312		334		337		295		289	
Network Mean =												
Natl. Mean =												
% PTH-I < 300	56%		50%		37%		52%		51%		55%	



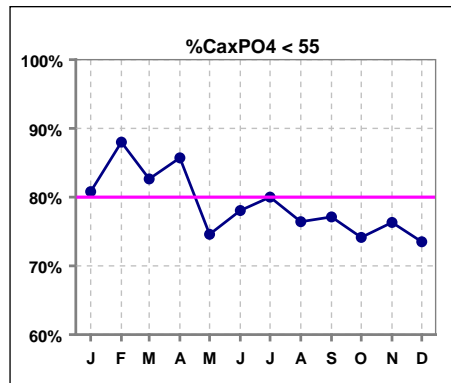
	Jan	Feb	Mar	Apr	May	Jun	Jul	Aug	Sep	Oct	Nov	Dec
# PTH-I	124		111		111		124		109		109	
# PTH-I >150 & <300	38		29		25		36		28		35	
Pop. Mean =	359		384		451		381		366		356	
Std. Deviation =	313		312		334		337		295		289	
Network Mean =												
Natl. Mean =												
% PTH-I >150 & <300	31%		26%		23%		29%		26%		32%	



*Methodology: a) Monthly values based on patient's monthly average of all values present for the month; b) Quarter values are average of all values for quarter; c) Values not averaged use last value present at months end.

III. OSTEODYSTROPHY - CONT.

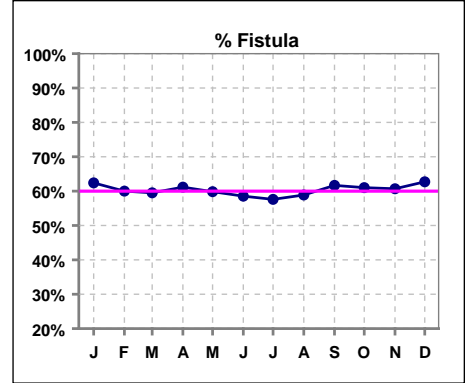
	Jan	Feb	Mar	Apr	May	Jun	Jul	Aug	Sep	Oct	Nov	Dec
# Ca x PO4	125	125	121	119	122	123	125	123	118	116	114	117
# Ca x PO4 < 55	101	110	100	102	91	96	100	94	91	86	87	86
Pop. Mean =	44.7	44.1	44.7	45.1	47.5	48.7	47.3	46.6	48.0	48.0	47.2	47.0
Std. Deviation =	12.3	10.6	11.9	11.0	12.9	18.9	11.3	12.8	12.6	11.9	12.2	11.2
Network Mean =												
Natl. Mean =												
% CaxPO4 < 55	81%	88%	83%	86%	75%	78%	80%	76%	77%	74%	76%	74%



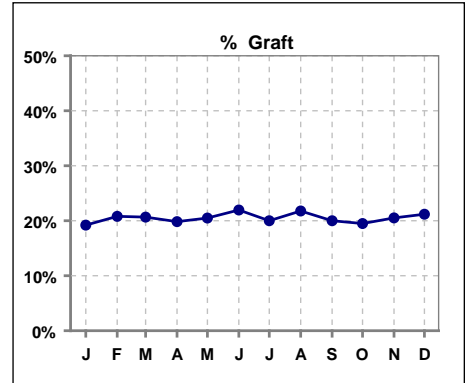
*Methodology: a) Monthly values based on patient's monthly average of all values present for the month; b) Quarter values are average of all values for quarter; c) Values not averaged use last value present at months end.

IV. ACCESS

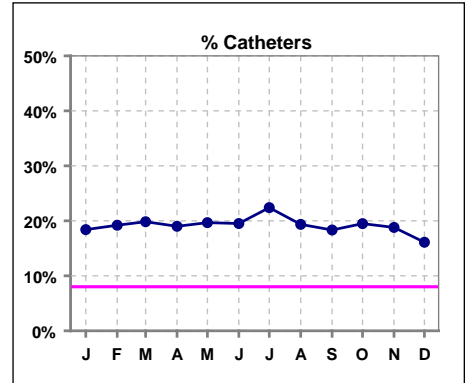
	Jan	Feb	Mar	Apr	May	Jun	Jul	Aug	Sep	Oct	Nov	Dec
# Access	125	125	121	121	122	123	125	124	120	118	117	118
# Fistula	78	75	72	74	73	72	72	73	74	72	71	74
Network % - 2004	55%	55%	55%	55%	55%	55%	55%	55%	55%	55%	55%	55%
Natl. % - 2004	35%	35%	35%	35%	35%	35%	35%	35%	35%	35%	35%	35%
% Fistula	62%	60%	60%	61%	60%	59%	58%	59%	62%	61%	61%	63%



	Jan	Feb	Mar	Apr	May	Jun	Jul	Aug	Sep	Oct	Nov	Dec
# Access	125	125	121	121	122	123	125	124	120	118	117	118
# Graft	24	26	25	24	25	27	25	27	24	23	24	25
Network %												
Natl. %												
% Graft	19%	21%	21%	20%	20%	22%	20%	22%	20%	19%	21%	21%



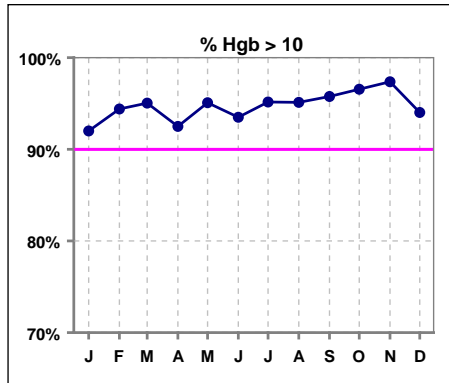
	Jan	Feb	Mar	Apr	May	Jun	Jul	Aug	Sep	Oct	Nov	Dec
# Access	125	125	121	121	122	123	125	124	120	118	117	118
# Catheters	23	24	24	23	24	24	28	24	22	23	22	19
Network %												
Natl. % - 2004	27%	27%	27%	27%	27%	27%	27%	27%	27%	27%	27%	27%
% Catheters	18%	19%	20%	19%	20%	20%	22%	19%	18%	19%	19%	16%



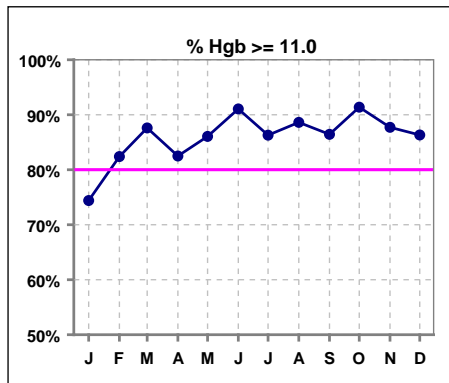
*Methodology: a) Monthly values based on patient's monthly average of all values present for the month; b) Quarter values are average of all values for quarter; c) Values not averaged use last value present at months end.

V. ANEMIA

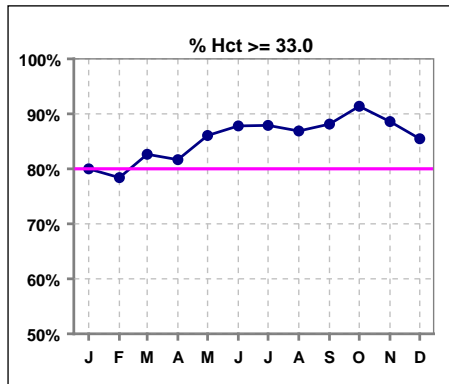
	Jan	Feb	Mar	Apr	May	Jun	Jul	Aug	Sep	Oct	Nov	Dec
# Hgb	125	125	121	120	122	123	124	123	118	116	114	117
# Hgb > 10.0	115	118	115	111	116	115	118	117	113	112	111	110
Pop. Mean =	11.7	12.0	12.1	12.0	12.2	12.6	12.4	12.5	12.8	12.8	12.7	12.5
Std. Deviation =	1.3	1.3	1.2	1.3	1.2	1.4	1.5	1.4	1.6	1.3	1.3	1.5
Network Mean =	11.8	11.8	11.8	11.8	11.8	11.8	11.8	11.8	11.8	11.8	11.8	11.8
Natl. Mean =												
% Hgb > 10.0	92%	94%	95%	93%	95%	93%	95%	95%	96%	97%	97%	94%



	Jan	Feb	Mar	Apr	May	Jun	Jul	Aug	Sep	Oct	Nov	Dec
# Hgb	125	125	121	120	122	123	124	123	118	116	114	117
# Hgb >= 11.0	93	103	106	99	105	112	107	109	102	106	100	101
Pop. Mean =	11.7	12.0	12.1	12.0	12.2	12.6	12.4	12.5	12.8	12.8	12.7	12.5
Std. Deviation =	1.3	1.3	1.2	1.3	1.2	1.4	1.5	1.4	1.6	1.3	1.3	1.5
Network Mean =	11.8	11.8	11.8	11.8	11.8	11.8	11.8	11.8	11.8	11.8	11.8	11.8
Natl. Mean =												
% Hgb >= 11.0	74%	82%	88%	83%	86%	91%	86%	89%	86%	91%	88%	86%
% Natl. >= 11 2004	80%	80%	80%	80%	80%	80%	80%	80%	80%	80%	80%	80%



	Jan	Feb	Mar	Apr	May	Jun	Jul	Aug	Sep	Oct	Nov	Dec
# Hct	125	125	121	120	122	123	124	122	118	116	114	117
# Hct >= 33.0	100	98	100	98	105	108	109	106	104	106	101	100
Pop. Mean =	36	36	36	37	37	38	38	38	39	39	38	38
Std. Deviation =	4.12	4.01	3.87	4.17	3.93	4.58	4.47	4.20	4.89	4.16	3.91	4.69
Network Mean =												
Natl. Mean =												
% Hct >= 33.0	80%	78%	83%	82%	86%	88%	88%	87%	88%	91%	89%	85%

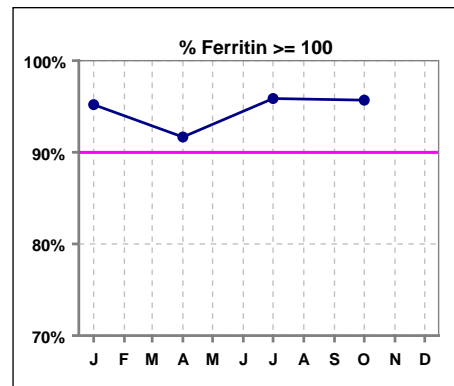


*Methodology: a) Monthly values based on patient's monthly average of all values present for the month; b) Quarter values are average of all values for quarter; c) Values not averaged use last value present at months end.

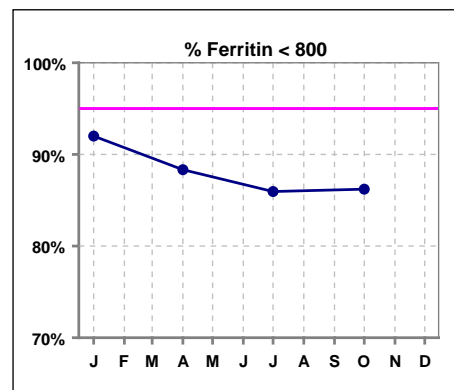
V. ANEMIA - CONT.

Iron Profile

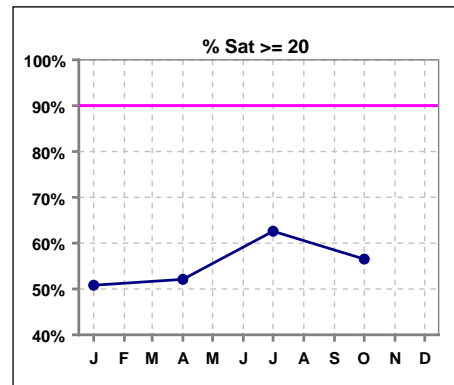
	Jan	Feb	Mar	Apr	May	Jun	Jul	Aug	Sep	Oct	Nov	Dec
# Ferritin	125			120			121			116		
# Ferritin >= 100	119			110			116			111		
Pop. Mean =	431			459			498			450		
Std. Deviation =	256			314			304			272		
Network Mean =												
Natl. Mean =												
% Ferritin >= 100	95%			92%			96%			96%		
%Natl. >=100 2004	94%			94%			94%			94%		



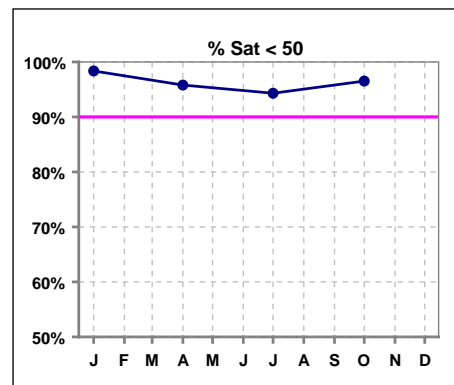
	Jan	Feb	Mar	Apr	May	Jun	Jul	Aug	Sep	Oct	Nov	Dec
# Ferritin	125			120			121			116		
# Ferritin < 800	115			106			104			100		
Pop. Mean =	431			459			498			450		
Std. Deviation =	256			314			304			272		
Network Mean =												
Natl. Mean =												
% Ferritin < 800	92%			88%			86%			86%		



	Jan	Feb	Mar	Apr	May	Jun	Jul	Aug	Sep	Oct	Nov	Dec
# % Sat	122			119			123			115		
# % Sat >= 20	62			62			77			65		
Pop. Mean =	23			23			26			24		
Std. Deviation =	12			13			15			12		
Network Mean =												
Natl. Mean =												
% Sat% >= 20	51%			52%			63%			57%		
%Natl. >=20 2004	81%			81%			81%			81%		



	Jan	Feb	Mar	Apr	May	Jun	Jul	Aug	Sep	Oct	Nov	Dec
# % Sat	122			119			123			115		
# % Sat < 50	120			114			116			111		
Pop. Mean =	23			23			26			24		
Std. Deviation =	12			13			15			12		
Network Mean =												
Natl. Mean =												
% Sat% < 50	98%			96%			94%			97%		



*Methodology: a) Monthly values based on patient's monthly average of all values present for the month; b) Quarter values are average of all values for quarter; c) Values not averaged use last value present at months end.