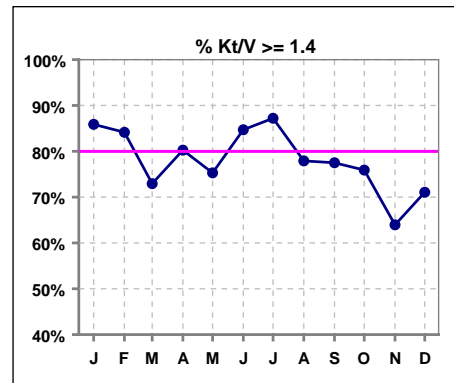


I. ADEQUACY OF DIALYSIS

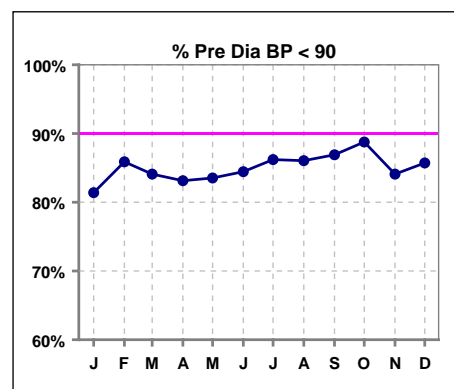
	Jan	Feb	Mar	Apr	May	Jun	Jul	Aug	Sep	Oct	Nov	Dec
# Kt/V	85	82	85	81	85	85	86	86	80	83	86	76
# Kt/V >= 1.4	73	69	62	65	64	72	75	67	62	63	55	54
Pop. Mean =	1.72	1.71	1.62	1.62	1.61	1.73	1.68	1.57	1.59	1.57	1.58	1.57
Std. Deviation =	0.30	0.35	0.36	0.35	0.36	0.34	0.32	0.27	0.28	0.35	0.60	0.51
Network Mean =	1.59	1.59	1.59	1.59	1.59	1.59	1.59	1.59	1.59	1.59	1.59	1.59
Natl. Mean =												
% Kt/V >= 1.4	86%	84%	73%	80%	75%	85%	87%	78%	78%	76%	64%	71%
**% Kt/V >= 1.2	99%	95%	92%	89%	92%	95%	98%	93%	94%	90%	87%	84%

** As of Apr. '04

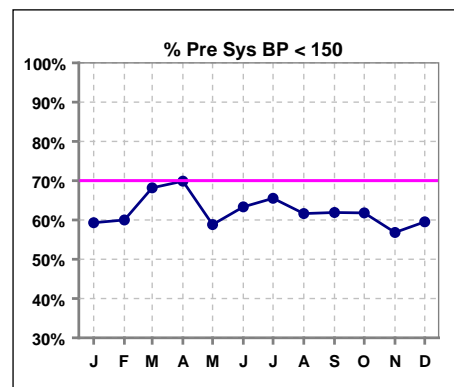


Blood Pressure Control (Pre)

	Jan	Feb	Mar	Apr	May	Jun	Jul	Aug	Sep	Oct	Nov	Dec
# Pre Dia BP	86	85	88	83	85	90	87	86	84	89	88	84
# Pre Dia BP < 90	70	73	74	69	71	76	75	74	73	79	74	72
Pop. Mean =	81	79	78	79	78	78	77	77	77	75	75	76
Std. Deviation =	12.7	14.1	13.4	15.0	12.4	12.2	11.0	12.2	12.7	14.3	13.3	13.7
Network Mean =												
Natl. Mean =												
% Pre Dia BP < 90	81%	86%	84%	83%	84%	84%	86%	86%	87%	89%	84%	86%



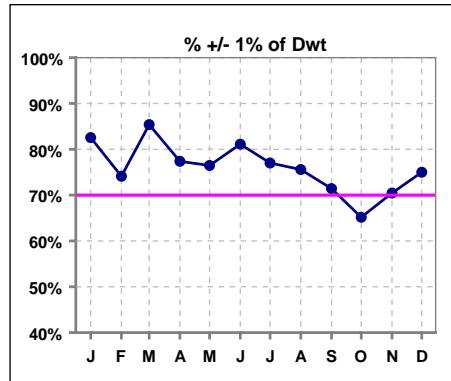
	Jan	Feb	Mar	Apr	May	Jun	Jul	Aug	Sep	Oct	Nov	Dec
# Pre Sys BP	86	85	88	83	85	90	87	86	84	89	88	84
# Pre Sys BP < 150	51	51	60	58	50	57	57	53	52	55	50	50
Pop. Mean =	146	146	142	143	143	142	142	142	145	143	146	145
Std. Deviation =	15.1	16.6	18.0	18.2	17.0	17.8	17.7	17.7	18.5	20.4	21.9	22.6
Network Mean =												
Natl. Mean =												
% Pre Sys BP < 150	59%	60%	68%	70%	59%	63%	66%	62%	62%	62%	57%	60%



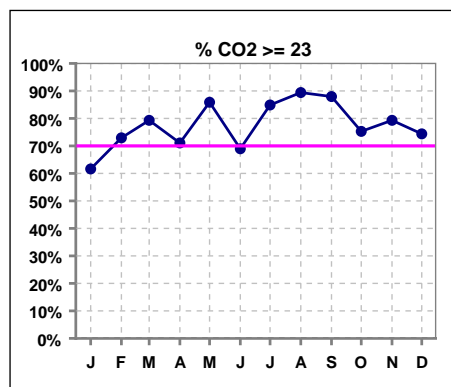
*Methodology: a) Monthly values based on patient's monthly average of all values present for the month; b) Quarter values are average of all values for quarter; c) Values not averaged use last value present at months end.

I. ADEQUACY OF DIALYSIS - CONT.

	Jan	Feb	Mar	Apr	May	Jun	Jul	Aug	Sep	Oct	Nov	Dec
# Post/Dwt	86	85	89	84	85	90	87	86	84	89	88	84
# +/- 1% of Dwt	71	63	76	65	65	73	67	65	60	58	62	63
% +/- 1 % of Dwt	83%	74%	85%	77%	76%	81%	77%	76%	71%	65%	70%	75%



	Jan	Feb	Mar	Apr	May	Jun	Jul	Aug	Sep	Oct	Nov	Dec
# CO2	86	85	87	83	85	87	86	85	83	89	87	82
# CO2 >= 23	53	62	69	59	73	60	73	76	73	67	69	61
Pop. Mean =	23	24	24	24	25	24	25	25	25	24	25	24
Std. Deviation =	3.12	2.81	2.75	3.35	2.53	3.10	2.73	2.55	2.63	2.97	3.01	2.79
Network Mean =												
Natl. Mean =												
% CO2 >= 23	62%	73%	79%	71%	86%	69%	85%	89%	88%	75%	79%	74%



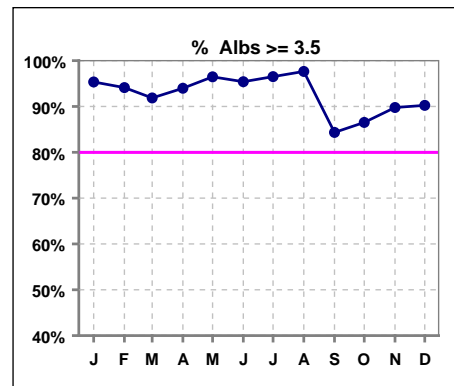
*Methodology: a) Monthly values based on patient's monthly average of all values present for the month; b) Quarter values are average of all values for quarter; c) Values not averaged use last value present at months end.

*Albumin values use BCG method - as of July 2001

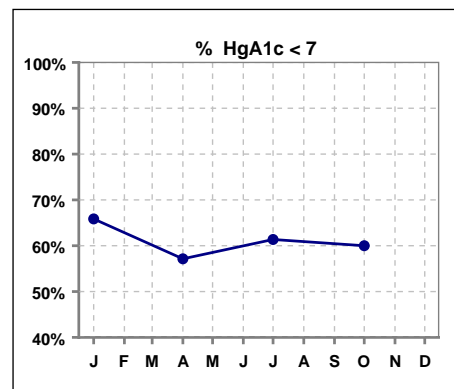
II. NUTRITION

	Jan	Feb	Mar	Apr	May	Jun	Jul	Aug	Sep	Oct	Nov	Dec
# Albumin	86	85	86	83	85	87	86	85	83	89	88	82
# Albumin >= 3.5	82	80	79	78	82	83	83	83	70	77	79	74
Pop. Mean =	4.0	4.1	4.0	4.1	4.1	4.0	4.0	4.0	3.8	3.9	3.9	3.9
Std. Deviation =	0.32	0.33	0.35	0.35	0.32	0.33	0.29	0.28	0.31	0.33	0.36	0.44
Network Mean =	3.4	3.4	3.4	3.4	3.4	3.4	3.4	3.4	3.4	3.4	3.4	3.4
Natl. Mean =	3.8	3.8	3.8	3.8	3.8	3.8	3.8	3.8	3.8	3.8	3.8	3.8
% Alb >= 3.5	95%	94%	92%	94%	96%	95%	97%	98%	84%	87%	90%	90%
% Alb >= 4.0	64%	69%	66%	71%	62%	62%	53%	58%	35%	38%	52%	49%
*Natl % >= 3.5-BCG	81%	81%	81%	81%	81%	81%	81%	81%	81%	81%	81%	81%
*Natl. % >= 4.0-BCG	39%	39%	39%	39%	39%	39%	39%	39%	39%	39%	39%	39%

*Figures for 2004



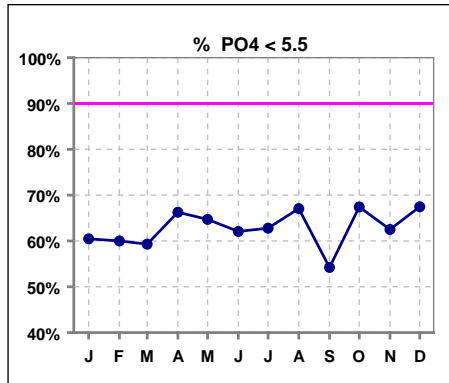
	Jan	Feb	Mar	Apr	May	Jun	Jul	Aug	Sep	Oct	Nov	Dec
# HgA1c	41			42			44			5		
# HgA1c < 7	27			24			27			3		
Pop. Mean =	6.8			7.0			6.8			6.8		
Std. Deviation =	1.62			1.66			1.55			1.19		
Network Mean =												
Natl. Mean =												
% HgA1c < 7	66%			57%			61%			60%		



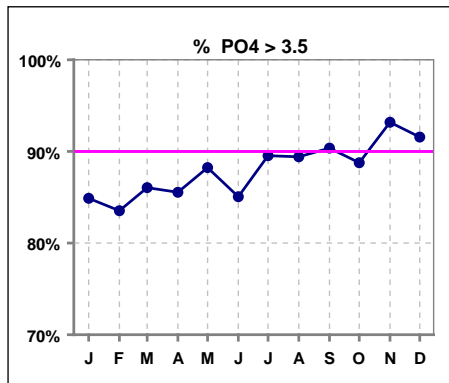
*Methodology: a) Monthly values based on patient's monthly average of all values present for the month; b) Quarter values are average of all values for quarter; c) Values not averaged use last value present at months end.

III. OSTEODYSTROPHY

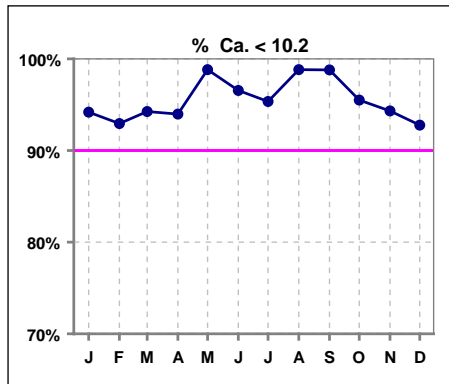
	Jan	Feb	Mar	Apr	May	Jun	Jul	Aug	Sep	Oct	Nov	Dec
# PO4	86	85	86	83	85	87	86	85	83	89	88	83
# PO4 < 5.5	52	51	51	55	55	54	54	57	45	60	55	56
Pop. Mean =	5.1	5.2	5.1	5.1	5.1	5.1	5.2	5.2	5.2	5.1	5.2	5.2
Std. Deviation =	1.40	1.60	1.43	1.53	1.51	1.39	1.62	1.51	1.35	1.49	1.39	1.54
Network Mean =												
Natl. Mean =												
% PO4 < 5.5	60%	60%	59%	66%	65%	62%	63%	67%	54%	67%	63%	67%



	Jan	Feb	Mar	Apr	May	Jun	Jul	Aug	Sep	Oct	Nov	Dec
# PO4	86	85	86	83	85	87	86	85	83	89	88	83
# PO4 > 3.5	73	71	74	71	75	74	77	76	75	79	82	76
Pop. Mean =	5.1	5.2	5.1	5.1	5.1	5.1	5.2	5.2	5.2	5.1	5.2	5.2
Std. Deviation =	1.40	1.60	1.43	1.53	1.51	1.39	1.62	1.51	1.35	1.49	1.39	1.54
Network Mean =												
Natl. Mean =												
% PO4 > 3.5	85%	84%	86%	86%	88%	85%	90%	89%	90%	89%	93%	92%



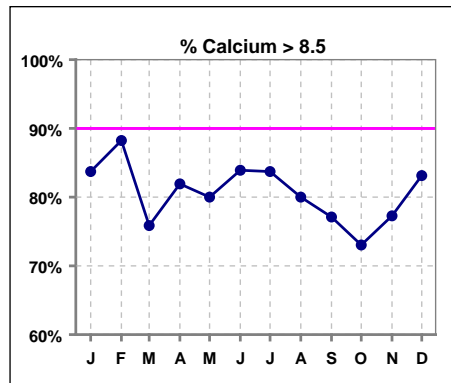
	Jan	Feb	Mar	Apr	May	Jun	Jul	Aug	Sep	Oct	Nov	Dec
# Calcium	86	85	87	83	85	87	86	85	83	89	88	83
# Calcium < 10.2	81	79	82	78	84	84	82	84	82	85	83	77
Pop. Mean =	9.2	9.2	9.0	9.1	9.0	9.1	9.1	9.0	8.9	8.9	9.0	9.0
Std. Deviation =	0.60	0.65	0.73	0.68	0.55	0.63	0.64	0.63	0.62	0.67	0.69	0.77
Network Mean =												
Natl. Mean =												
% Ca < 10.2	94%	93%	94%	94%	99%	97%	95%	99%	99%	96%	94%	93%



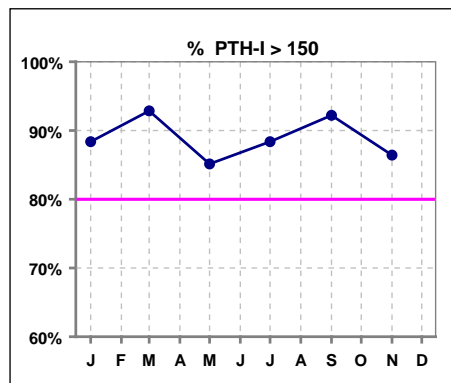
*Methodology: a) Monthly values based on patient's monthly average of all values present for the month; b) Quarter values are average of all values for quarter; c) Values not averaged use last value present at months end.

III. OSTEODYSTROPHY - CONT.

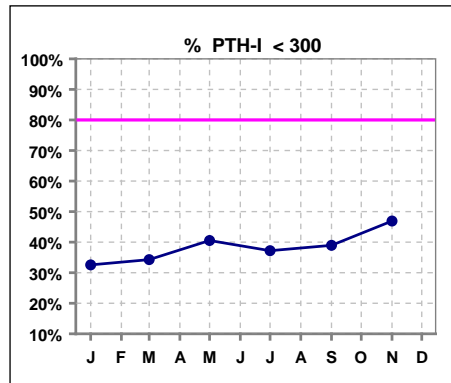
	Jan	Feb	Mar	Apr	May	Jun	Jul	Aug	Sep	Oct	Nov	Dec
# Calcium	86	85	87	83	85	87	86	85	83	89	88	83
# Calcium > 8.5	72	75	66	68	68	73	72	68	64	65	68	69
Pop. Mean =	9.2	9.2	9.0	9.1	9.0	9.1	9.1	9.0	8.9	8.9	9.0	9.0
Std. Deviation =	0.60	0.65	0.73	0.68	0.55	0.63	0.64	0.63	0.62	0.67	0.69	0.77
Network Mean =												
Natl. Mean =												
% Calcium > 8.5	84%	88%	76%	82%	80%	84%	84%	80%	77%	73%	77%	83%



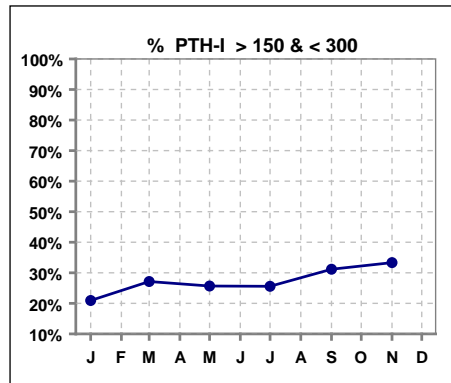
	Jan	Feb	Mar	Apr	May	Jun	Jul	Aug	Sep	Oct	Nov	Dec
# PTH-I	86		70		74		86		77		81	
# PTH-I > 150	76		65		63		76		71		70	
Pop. Mean =	518		541		509		473		464		412	
Std. Deviation =	414		605		421		322		360		327	
Network Mean =												
Natl. Mean =												
% PTH-I > 150	88%		93%		85%		88%		92%		86%	



	Jan	Feb	Mar	Apr	May	Jun	Jul	Aug	Sep	Oct	Nov	Dec
# PTH-I	86		70		74		86		77		81	
# PTH-I < 300	28		24		30		32		30		38	
Pop. Mean =	518		541		509		473		464		412	
Std. Deviation =	414		605		421		322		360		327	
Network Mean =												
Natl. Mean =												
% PTH-I < 300	33%		34%		41%		37%		39%		47%	



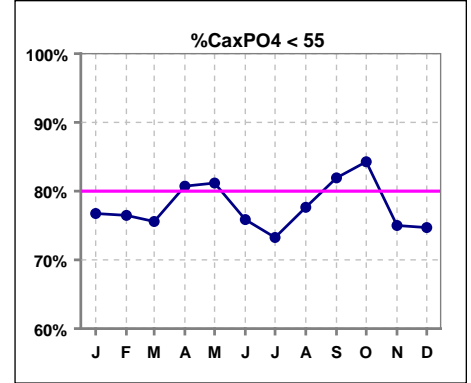
	Jan	Feb	Mar	Apr	May	Jun	Jul	Aug	Sep	Oct	Nov	Dec
# PTH-I	86		70		74		86		77		81	
# PTH-I > 150 & < 300	18		19		19		22		24		27	
Pop. Mean =	518		541		509		473		464		412	
Std. Deviation =	414		605		421		322		360		327	
Network Mean =												
Natl. Mean =												
% PTH-I > 150 & < 300	21%		27%		26%		26%		31%		33%	



*Methodology: a) Monthly values based on patient's monthly average of all values present for the month; b) Quarter values are average of all values for quarter; c) Values not averaged use last value present at months end.

III. OSTEODYSTROPHY - CONT.

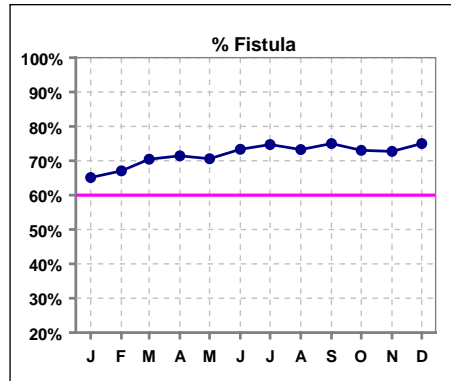
	Jan	Feb	Mar	Apr	May	Jun	Jul	Aug	Sep	Oct	Nov	Dec
# Ca x PO4	86	85	86	83	85	87	86	85	83	89	88	83
# Ca x PO4 < 55	66	65	65	67	69	66	63	66	68	75	66	62
Pop. Mean =	46.3	47.5	46.2	46.1	45.4	45.9	46.9	46.7	46.5	45.4	47.1	46.9
Std. Deviation =	13.0	14.8	12.4	13.6	12.9	12.4	13.3	12.4	11.8	12.5	11.9	13.5
Network Mean =												
Natl. Mean =												
% CaxPO4 < 55	77%	76%	76%	81%	81%	76%	73%	78%	82%	84%	75%	75%



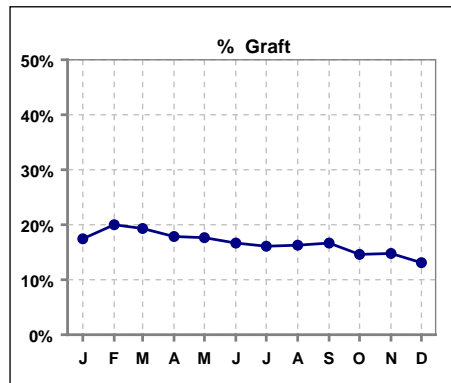
*Methodology: a) Monthly values based on patient's monthly average of all values present for the month; b) Quarter values are average of all values for quarter; c) Values not averaged use last value present at months end.

IV. ACCESS

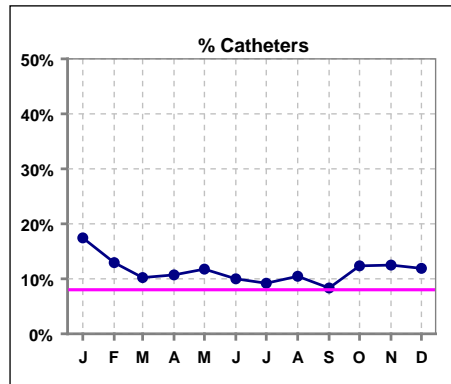
	Jan	Feb	Mar	Apr	May	Jun	Jul	Aug	Sep	Oct	Nov	Dec
# Access	86	85	88	84	85	90	87	86	84	89	88	84
# Fistula	56	57	62	60	60	66	65	63	63	65	64	63
Network % - 2004	55%	55%	55%	55%	55%	55%	55%	55%	55%	55%	55%	55%
Natl. % - 2004	35%	35%	35%	35%	35%	35%	35%	35%	35%	35%	35%	35%
% Fistula	65%	67%	70%	71%	71%	73%	75%	73%	75%	73%	73%	75%



	Jan	Feb	Mar	Apr	May	Jun	Jul	Aug	Sep	Oct	Nov	Dec
# Access	86	85	88	84	85	90	87	86	84	89	88	84
# Graft	15	17	17	15	15	15	14	14	14	13	13	11
Network %												
Natl. %												
% Graft	17%	20%	19%	18%	18%	17%	16%	16%	17%	15%	15%	13%



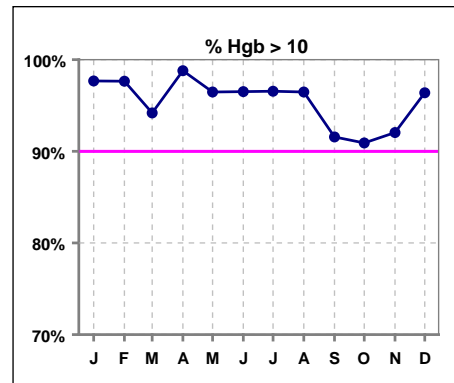
	Jan	Feb	Mar	Apr	May	Jun	Jul	Aug	Sep	Oct	Nov	Dec
# Access	86	85	88	84	85	90	87	86	84	89	88	84
# Catheters	15	11	9	9	10	9	8	9	7	11	11	10
Network %												
Natl. % - 2004	27%	27%	27%	27%	27%	27%	27%	27%	27%	27%	27%	27%
% Catheters	17%	13%	10%	11%	12%	10%	9%	10%	8%	12%	13%	12%



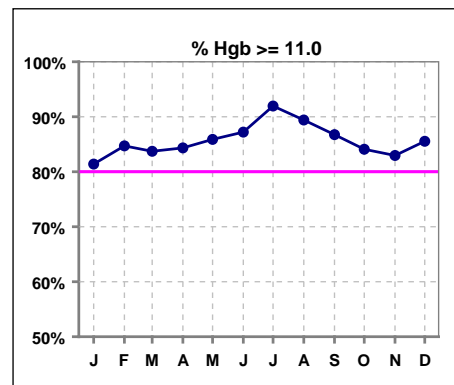
*Methodology: a) Monthly values based on patient's monthly average of all values present for the month; b) Quarter values are average of all values for quarter; c) Values not averaged use last value present at months end.

V. ANEMIA

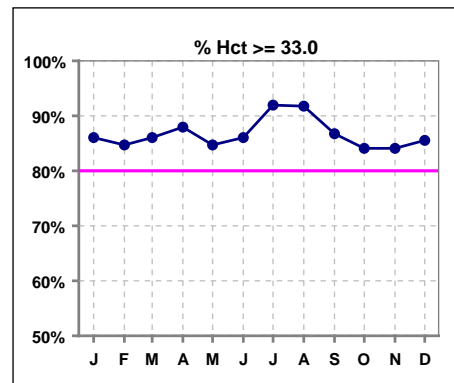
	Jan	Feb	Mar	Apr	May	Jun	Jul	Aug	Sep	Oct	Nov	Dec
# Hgb	86	85	86	83	85	86	87	85	83	88	88	83
# Hgb > 10.0	84	83	81	82	82	83	84	82	76	80	81	80
Pop. Mean =	11.8	12.2	12.1	12.1	12.1	12.4	12.6	12.6	12.5	12.3	12.4	12.5
Std. Deviation =	1.1	1.3	1.2	1.1	1.0	1.3	1.3	1.4	1.7	1.6	1.7	1.4
Network Mean =	11.8	11.8	11.8	11.8	11.8	11.8	11.8	11.8	11.8	11.8	11.8	11.8
Natl. Mean =												
% Hgb > 10.0	98%	98%	94%	99%	96%	97%	97%	96%	92%	91%	92%	96%



	Jan	Feb	Mar	Apr	May	Jun	Jul	Aug	Sep	Oct	Nov	Dec
# Hgb	86	85	86	83	85	86	87	85	83	88	88	83
# Hgb >= 11.0	70	72	72	70	73	75	80	76	72	74	73	71
Pop. Mean =	11.8	12.2	12.1	12.1	12.1	12.4	12.6	12.6	12.5	12.3	12.4	12.5
Std. Deviation =	1.1	1.3	1.2	1.1	1.0	1.3	1.3	1.4	1.7	1.6	1.7	1.4
Network Mean =	11.8	11.8	11.8	11.8	11.8	11.8	11.8	11.8	11.8	11.8	11.8	11.8
Natl. Mean =												
% Hgb >= 11.0	81%	85%	84%	84%	86%	87%	92%	89%	87%	84%	83%	86%
% Natl. >= 11 2004	80%	80%	80%	80%	80%	80%	80%	80%	80%	80%	80%	80%



	Jan	Feb	Mar	Apr	May	Jun	Jul	Aug	Sep	Oct	Nov	Dec
# Hct	86	85	86	83	85	86	87	85	83	88	88	83
# Hct >= 33.0	74	72	74	73	72	74	80	78	72	74	74	71
Pop. Mean =	37	37	36	37	37	37	38	38	38	37	38	38
Std. Deviation =	3.42	3.82	3.79	3.44	3.46	3.95	3.96	4.31	5.47	5.04	5.18	4.29
Network Mean =												
Natl. Mean =												
% Hct >= 33.0	86%	85%	86%	88%	85%	86%	92%	92%	87%	84%	84%	86%

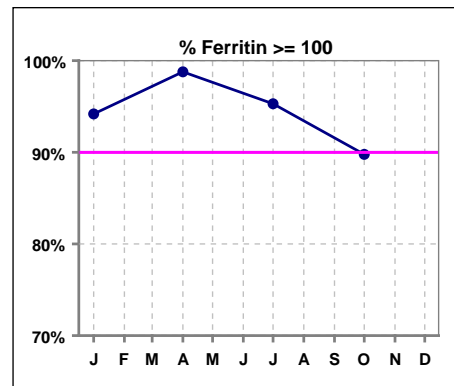


*Methodology: a) Monthly values based on patient's monthly average of all values present for the month; b) Quarter values are average of all values for quarter; c) Values not averaged use last value present at months end.

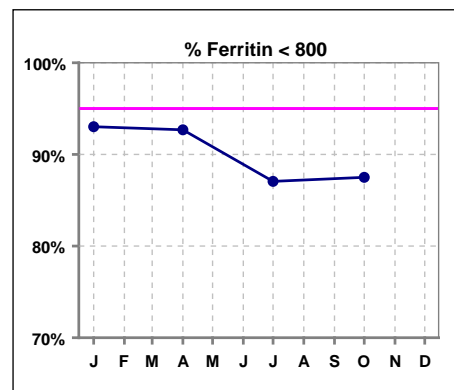
V. ANEMIA - CONT.

Iron Profile

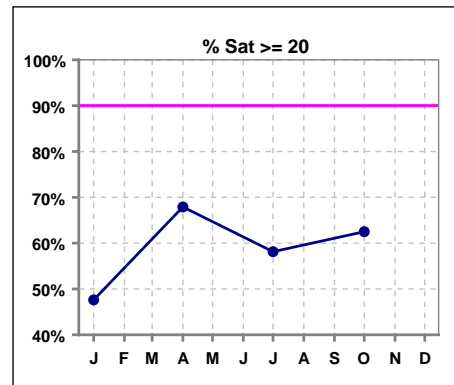
	Jan	Feb	Mar	Apr	May	Jun	Jul	Aug	Sep	Oct	Nov	Dec
# Ferritin	86			82			85			88		
# Ferritin >= 100	81			81			81			79		
Pop. Mean =	427			447			469			452		
Std. Deviation =	285			208			287			282		
Network Mean =												
Natl. Mean =												
% Ferritin >= 100	94%			99%			95%			90%		
%Natl. >=100 2004	94%			94%			94%			94%		



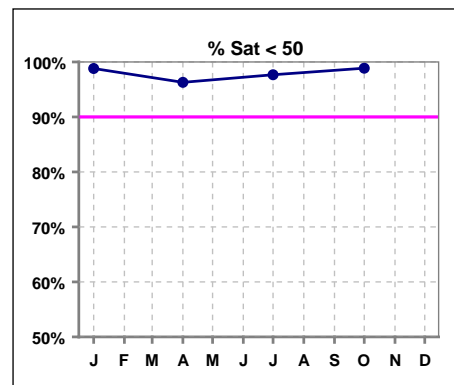
	Jan	Feb	Mar	Apr	May	Jun	Jul	Aug	Sep	Oct	Nov	Dec
# Ferritin	86			82			85			88		
# Ferritin < 800	80			76			74			77		
Pop. Mean =	427			447			469			452		
Std. Deviation =	285			208			287			282		
Network Mean =												
Natl. Mean =												
% Ferritin < 800	93%			93%			87%			88%		



	Jan	Feb	Mar	Apr	May	Jun	Jul	Aug	Sep	Oct	Nov	Dec
# % Sat	84			81			86			88		
# % Sat >= 20	40			55			50			55		
Pop. Mean =	21			26			23			22		
Std. Deviation =	10			12			10			9		
Network Mean =												
Natl. Mean =												
% Sat% >= 20	48%			68%			58%			63%		
%Natl. >=20 2004	81%			81%			81%			81%		



	Jan	Feb	Mar	Apr	May	Jun	Jul	Aug	Sep	Oct	Nov	Dec
# % Sat	84			81			86			88		
# % Sat < 50	83			78			84			87		
Pop. Mean =	21			26			23			22		
Std. Deviation =	10			12			10			9		
Network Mean =												
Natl. Mean =												
% Sat% < 50	99%			96%			98%			99%		



*Methodology: a) Monthly values based on patient's monthly average of all values present for the month; b) Quarter values are average of all values for quarter; c) Values not averaged use last value present at months end.