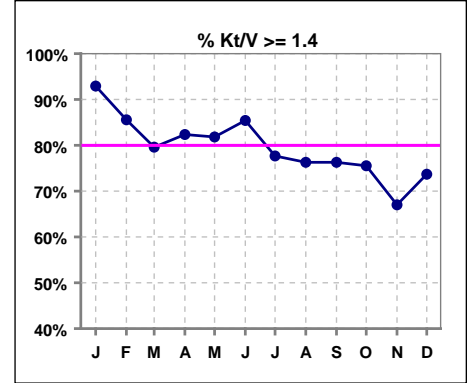


**I. ADEQUACY OF DIALYSIS**

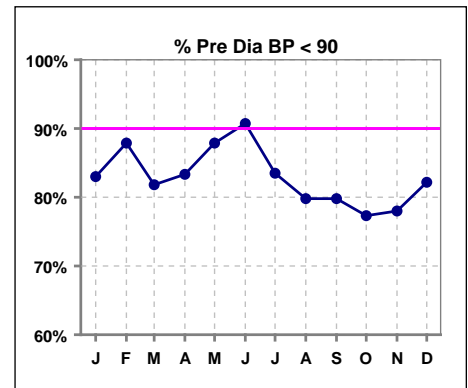
	Jan	Feb	Mar	Apr	May	Jun	Jul	Aug	Sep	Oct	Nov	Dec
# Kt/V	99	97	98	102	99	96	103	97	97	94	97	95
# Kt/V >= 1.4	92	83	78	84	81	82	80	74	74	71	65	70
Pop. Mean =	1.74	1.73	1.61	1.70	1.66	1.70	1.63	1.54	1.59	1.59	1.51	1.54
Std. Deviation =	0.33	0.40	0.30	0.46	0.31	0.34	0.35	0.28	0.34	0.29	0.28	0.27
Network Mean =	1.59	1.59	1.59	1.59	1.59	1.59	1.59	1.59	1.59	1.59	1.59	1.59
Natl. Mean =												
<b>% Kt/V &gt;= 1.4</b>	<b>93%</b>	<b>86%</b>	<b>80%</b>	<b>82%</b>	<b>82%</b>	<b>85%</b>	<b>78%</b>	<b>76%</b>	<b>76%</b>	<b>76%</b>	<b>67%</b>	<b>74%</b>
**% Kt/V >= 1.2	97%	95%	93%	91%	95%	92%	93%	90%	89%	95%	90%	93%

\*\* As of Apr. '04

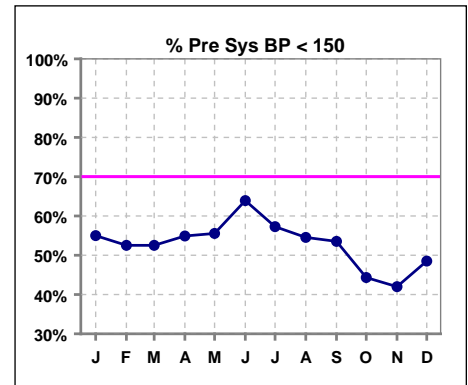


**Blood Pressure Control (Pre)**

	Jan	Feb	Mar	Apr	May	Jun	Jul	Aug	Sep	Oct	Nov	Dec
# Pre Dia BP	100	99	99	102	99	97	103	99	99	97	100	101
# Pre Dia BP < 90	83	87	81	85	87	88	86	79	79	75	78	83
Pop. Mean =	79	78	80	78	76	76	77	78	78	79	79	79
Std. Deviation =	13.9	12.6	16.3	13.1	11.3	12.6	12.1	12.5	13.9	13.6	14.0	12.6
Network Mean =												
Natl. Mean =												
<b>% Pre Dia BP &lt; 90</b>	<b>83%</b>	<b>88%</b>	<b>82%</b>	<b>83%</b>	<b>88%</b>	<b>91%</b>	<b>83%</b>	<b>80%</b>	<b>80%</b>	<b>77%</b>	<b>78%</b>	<b>82%</b>



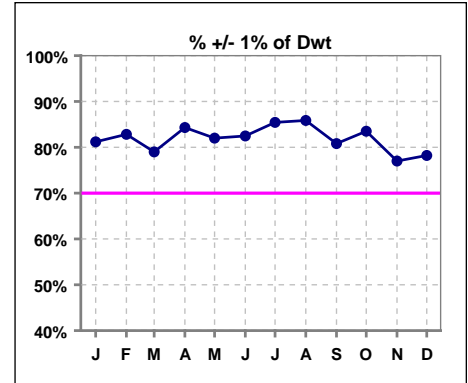
	Jan	Feb	Mar	Apr	May	Jun	Jul	Aug	Sep	Oct	Nov	Dec
# Pre Sys BP	100	99	99	102	99	97	103	99	99	97	100	101
# Pre Sys BP < 150	55	52	52	56	55	62	59	54	53	43	42	49
Pop. Mean =	147	148	149	147	146	143	144	147	146	148	149	149
Std. Deviation =	18.6	19.7	19.0	17.5	17.7	19.7	18.4	18.5	19.7	19.4	19.3	20.2
Network Mean =												
Natl. Mean =												
<b>% Pre Sys BP &lt; 150</b>	<b>55%</b>	<b>53%</b>	<b>53%</b>	<b>55%</b>	<b>56%</b>	<b>64%</b>	<b>57%</b>	<b>55%</b>	<b>54%</b>	<b>44%</b>	<b>42%</b>	<b>49%</b>



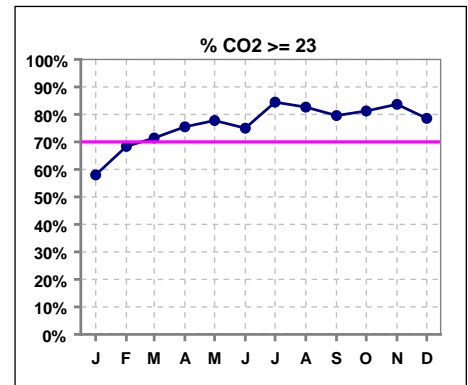
\*Methodology: a) Monthly values based on patient's monthly average of all values present for the month; b) Quarter values are average of all values for quarter; c) Values not averaged use last value present at months end.

**I. ADEQUACY OF DIALYSIS - CONT.**

	Jan	Feb	Mar	Apr	May	Jun	Jul	Aug	Sep	Oct	Nov	Dec
# Post/Dwt	101	99	100	102	100	97	103	99	99	97	100	101
# +/- 1% of Dwt	82	82	79	86	82	80	88	85	80	81	77	79
<b>% +/- 1 % of Dwt</b>	<b>81%</b>	<b>83%</b>	<b>79%</b>	<b>84%</b>	<b>82%</b>	<b>82%</b>	<b>85%</b>	<b>86%</b>	<b>81%</b>	<b>84%</b>	<b>77%</b>	<b>78%</b>



	Jan	Feb	Mar	Apr	May	Jun	Jul	Aug	Sep	Oct	Nov	Dec
# CO2	100	98	98	102	99	96	103	98	98	96	98	98
# CO2 >= 23	58	67	70	77	77	72	87	81	78	78	82	77
Pop. Mean =	23	24	24	24	25	24	25	25	25	25	25	25
Std. Deviation =	3.49	2.88	3.09	3.12	2.84	2.72	2.98	2.47	2.89	3.36	2.70	3.07
Network Mean =												
Natl. Mean =												
<b>% CO2 &gt;= 23</b>	<b>58%</b>	<b>68%</b>	<b>71%</b>	<b>75%</b>	<b>78%</b>	<b>75%</b>	<b>84%</b>	<b>83%</b>	<b>80%</b>	<b>81%</b>	<b>84%</b>	<b>79%</b>



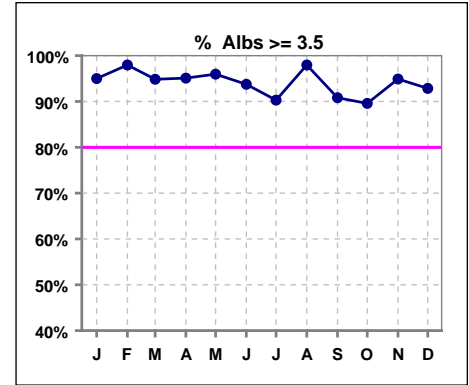
\*Methodology: a) Monthly values based on patient's monthly average of all values present for the month; b) Quarter values are average of all values for quarter; c) Values not averaged use last value present at months end.

\*Albumin values use BCG method - as of July 2001

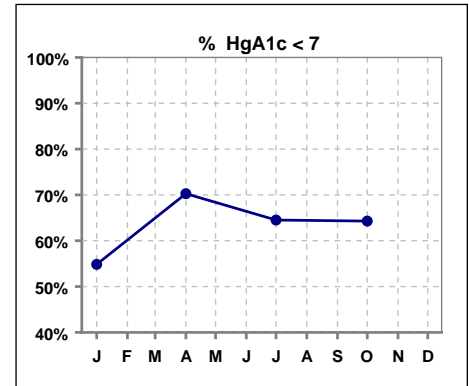
**II. NUTRITION**

	Jan	Feb	Mar	Apr	May	Jun	Jul	Aug	Sep	Oct	Nov	Dec
# Albumin	100	98	97	102	99	96	103	98	98	96	98	98
# Albumin >= 3.5	95	96	92	97	95	90	93	96	89	86	93	91
Pop. Mean =	4.1	4.2	4.1	4.1	4.1	4.1	3.9	4.1	3.9	3.9	4.0	4.0
Std. Deviation =	0.33	0.33	0.33	0.35	0.34	0.33	0.34	0.26	0.32	0.32	0.30	0.30
Network Mean =	3.4	3.4	3.4	3.4	3.4	3.4	3.4	3.4	3.4	3.4	3.4	3.4
Natl. Mean =	3.8	3.8	3.8	3.8	3.8	3.8	3.8	3.8	3.8	3.8	3.8	3.8
<b>% Alb &gt;= 3.5</b>	<b>95%</b>	<b>98%</b>	<b>95%</b>	<b>95%</b>	<b>96%</b>	<b>94%</b>	<b>90%</b>	<b>98%</b>	<b>91%</b>	<b>90%</b>	<b>95%</b>	<b>93%</b>
<b>% Alb &gt;= 4.0</b>	<b>74%</b>	<b>80%</b>	<b>70%</b>	<b>67%</b>	<b>71%</b>	<b>70%</b>	<b>55%</b>	<b>68%</b>	<b>41%</b>	<b>50%</b>	<b>62%</b>	<b>66%</b>
*Natl % >= 3.5-BCG	81%	81%	81%	81%	81%	81%	81%	81%	81%	81%	81%	81%
*Natl. % >= 4.0-BCG	39%	39%	39%	39%	39%	39%	39%	39%	39%	39%	39%	39%

\*Figures for 2004



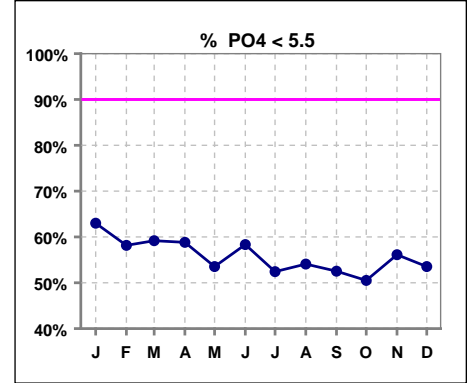
	Jan	Feb	Mar	Apr	May	Jun	Jul	Aug	Sep	Oct	Nov	Dec
# HgA1c	31			37			31			28		
# HgA1c < 7	17			26			20			18		
Pop. Mean =	6.9			6.7			6.6			7.1		
Std. Deviation =	1.83			2.32			2.04			2.20		
Network Mean =												
Natl. Mean =												
<b>% HgA1c &lt; 7</b>	<b>55%</b>			<b>70%</b>			<b>65%</b>			<b>64%</b>		



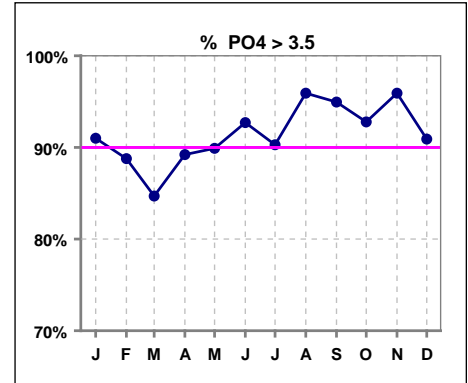
\*Methodology: a) Monthly values based on patient's monthly average of all values present for the month; b) Quarter values are average of all values for quarter; c) Values not averaged use last value present at months end.

**III. OSTEODYSTROPHY**

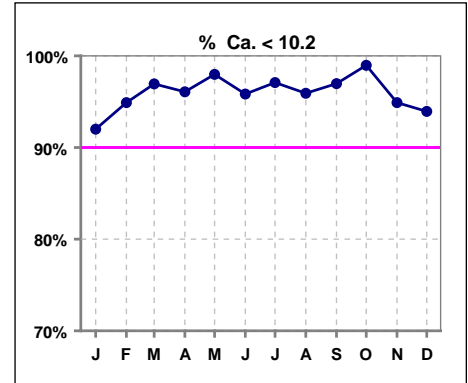
	Jan	Feb	Mar	Apr	May	Jun	Jul	Aug	Sep	Oct	Nov	Dec
# PO4	100	98	98	102	99	96	103	98	99	97	98	99
# PO4 < 5.5	63	57	58	60	53	56	54	53	52	49	55	53
Pop. Mean =	5.2	5.3	5.1	5.2	5.3	5.3	5.3	5.5	5.5	5.6	5.4	5.4
Std. Deviation =	1.38	1.48	1.57	1.46	1.35	1.34	1.36	1.37	1.39	1.67	1.49	1.58
Network Mean =												
Natl. Mean =												
<b>% PO4 &lt; 5.5</b>	<b>63%</b>	<b>58%</b>	<b>59%</b>	<b>59%</b>	<b>54%</b>	<b>58%</b>	<b>52%</b>	<b>54%</b>	<b>53%</b>	<b>51%</b>	<b>56%</b>	<b>54%</b>



	Jan	Feb	Mar	Apr	May	Jun	Jul	Aug	Sep	Oct	Nov	Dec
# PO4	100	98	98	102	99	96	103	98	99	97	98	99
# PO4 > 3.5	91	87	83	91	89	89	93	94	94	90	94	90
Pop. Mean =	5.2	5.3	5.1	5.2	5.3	5.3	5.3	5.5	5.5	5.6	5.4	5.4
Std. Deviation =	1.38	1.48	1.57	1.46	1.35	1.34	1.36	1.37	1.39	1.67	1.49	1.58
Network Mean =												
Natl. Mean =												
<b>% PO4 &gt; 3.5</b>	<b>91%</b>	<b>89%</b>	<b>85%</b>	<b>89%</b>	<b>90%</b>	<b>93%</b>	<b>90%</b>	<b>96%</b>	<b>95%</b>	<b>93%</b>	<b>96%</b>	<b>91%</b>



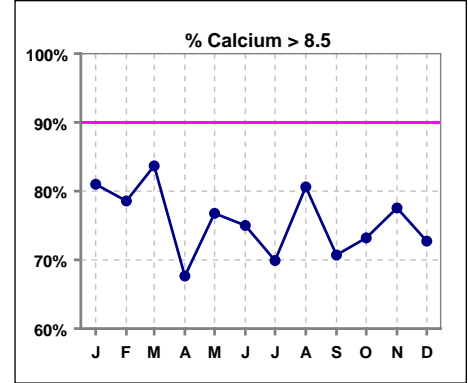
	Jan	Feb	Mar	Apr	May	Jun	Jul	Aug	Sep	Oct	Nov	Dec
# Calcium	100	98	98	102	99	96	103	98	99	97	98	99
# Calcium < 10.2	92	93	95	98	97	92	100	94	96	96	93	93
Pop. Mean =	9.1	9.1	9.1	8.9	9.0	9.0	8.8	9.0	8.9	8.9	9.0	8.9
Std. Deviation =	0.79	0.74	0.64	0.68	0.67	0.68	0.68	0.69	0.70	0.74	0.78	0.82
Network Mean =												
Natl. Mean =												
<b>% Ca &lt; 10.2</b>	<b>92%</b>	<b>95%</b>	<b>97%</b>	<b>96%</b>	<b>98%</b>	<b>96%</b>	<b>97%</b>	<b>96%</b>	<b>97%</b>	<b>99%</b>	<b>95%</b>	<b>94%</b>



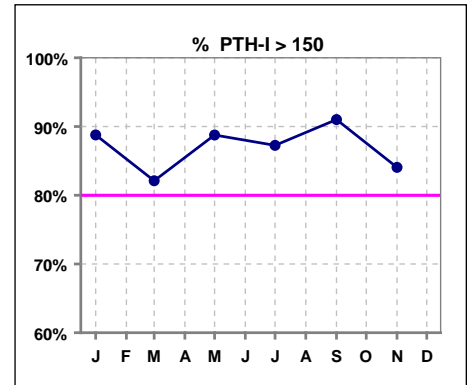
\*Methodology: a) Monthly values based on patient's monthly average of all values present for the month; b) Quarter values are average of all values for quarter; c) Values not averaged use last value present at months end.

**III. OSTEODYSTROPHY - CONT.**

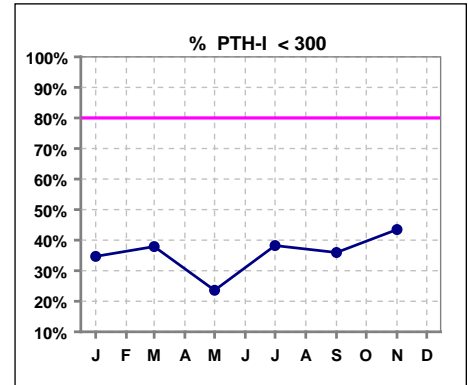
	Jan	Feb	Mar	Apr	May	Jun	Jul	Aug	Sep	Oct	Nov	Dec
# Calcium	100	98	98	102	99	96	103	98	99	97	98	99
# Calcium > 8.5	81	77	82	69	76	72	72	79	70	71	76	72
Pop. Mean =	9.1	9.1	9.1	8.9	9.0	9.0	8.8	9.0	8.9	8.9	9.0	8.9
Std. Deviation =	0.79	0.74	0.64	0.68	0.67	0.68	0.68	0.69	0.70	0.74	0.78	0.82
Network Mean =												
Natl. Mean =												
<b>% Calcium &gt; 8.5</b>	<b>81%</b>	<b>79%</b>	<b>84%</b>	<b>68%</b>	<b>77%</b>	<b>75%</b>	<b>70%</b>	<b>81%</b>	<b>71%</b>	<b>73%</b>	<b>78%</b>	<b>73%</b>



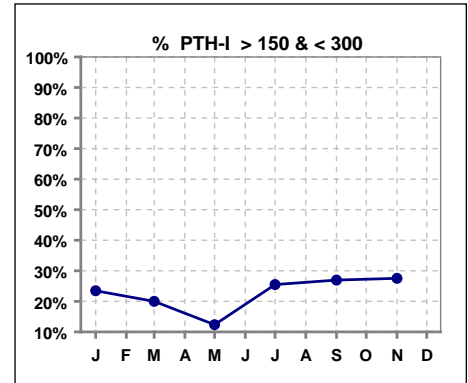
	Jan	Feb	Mar	Apr	May	Jun	Jul	Aug	Sep	Oct	Nov	Dec
# PTH-I	98		95		89		102		89		69	
# PTH-I > 150	87		78		79		89		81		58	
Pop. Mean =	551		522		540		520		491		444	
Std. Deviation =	518		493		412		426		384		381	
Network Mean =												
Natl. Mean =												
<b>% PTH-I &gt; 150</b>	<b>89%</b>		<b>82%</b>		<b>89%</b>		<b>87%</b>		<b>91%</b>		<b>84%</b>	



	Jan	Feb	Mar	Apr	May	Jun	Jul	Aug	Sep	Oct	Nov	Dec
# PTH-I	98		95		89		102		89		69	
# PTH-I < 300	34		36		21		39		32		30	
Pop. Mean =	551		522		540		520		491		444	
Std. Deviation =	518		493		412		426		384		381	
Network Mean =												
Natl. Mean =												
<b>% PTH-I &lt; 300</b>	<b>35%</b>		<b>38%</b>		<b>24%</b>		<b>38%</b>		<b>36%</b>		<b>43%</b>	



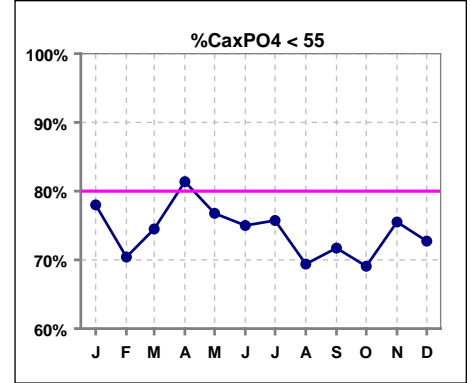
	Jan	Feb	Mar	Apr	May	Jun	Jul	Aug	Sep	Oct	Nov	Dec
# PTH-I	98		95		89		102		89		69	
# PTH-I > 150 & < 300	23		19		11		26		24		19	
Pop. Mean =	551		522		540		520		491		444	
Std. Deviation =	518		493		412		426		384		381	
Network Mean =												
Natl. Mean =												
<b>% PTH-I &gt; 150 &amp; &lt; 300</b>	<b>23%</b>		<b>20%</b>		<b>12%</b>		<b>25%</b>		<b>27%</b>		<b>28%</b>	



\*Methodology: a) Monthly values based on patient's monthly average of all values present for the month; b) Quarter values are average of all values for quarter; c) Values not averaged use last value present at months end.

**III. OSTEODYSTROPHY - CONT.**

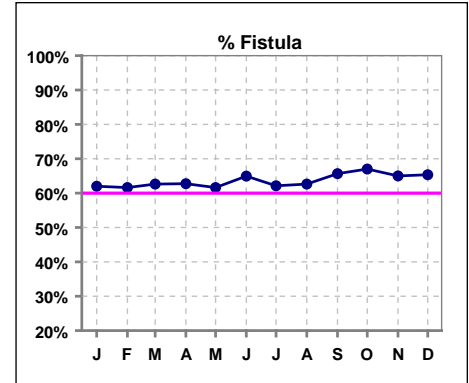
	Jan	Feb	Mar	Apr	May	Jun	Jul	Aug	Sep	Oct	Nov	Dec
# Ca x PO4	100	98	98	102	99	96	103	98	99	97	98	99
# Ca x PO4 < 55	78	69	73	83	76	72	78	68	71	67	74	72
Pop. Mean =	46.8	48.1	46.3	46.4	48.0	47.4	46.7	49.3	48.4	49.4	48.5	47.1
Std. Deviation =	12.3	13.0	14.0	12.5	12.5	11.8	11.8	12.0	11.3	13.9	13.2	12.5
Network Mean =												
Natl. Mean =												
<b>% CaxPO4 &lt; 55</b>	<b>78%</b>	<b>70%</b>	<b>74%</b>	<b>81%</b>	<b>77%</b>	<b>75%</b>	<b>76%</b>	<b>69%</b>	<b>72%</b>	<b>69%</b>	<b>76%</b>	<b>73%</b>



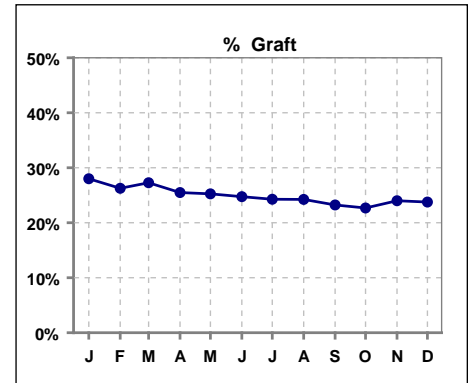
\*Methodology: a) Monthly values based on patient's monthly average of all values present for the month; b) Quarter values are average of all values for quarter; c) Values not averaged use last value present at months end.

**IV. ACCESS**

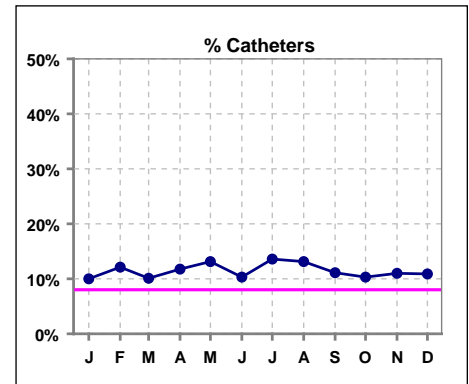
	Jan	Feb	Mar	Apr	May	Jun	Jul	Aug	Sep	Oct	Nov	Dec
<b># Access</b>	100	99	99	102	99	97	103	99	99	97	100	101
<b># Fistula</b>	62	61	62	64	61	63	64	62	65	65	65	66
<b>Network % - 2004</b>	55%	55%	55%	55%	55%	55%	55%	55%	55%	55%	55%	55%
<b>Natl. % - 2004</b>	35%	35%	35%	35%	35%	35%	35%	35%	35%	35%	35%	35%
<b>% Fistula</b>	62%	62%	63%	63%	62%	65%	62%	63%	66%	67%	65%	65%



	Jan	Feb	Mar	Apr	May	Jun	Jul	Aug	Sep	Oct	Nov	Dec
<b># Access</b>	100	99	99	102	99	97	103	99	99	97	100	101
<b># Graft</b>	28	26	27	26	25	24	25	24	23	22	24	24
<b>Network %</b>												
<b>Natl. %</b>												
<b>% Graft</b>	28%	26%	27%	25%	25%	25%	24%	24%	23%	23%	24%	24%



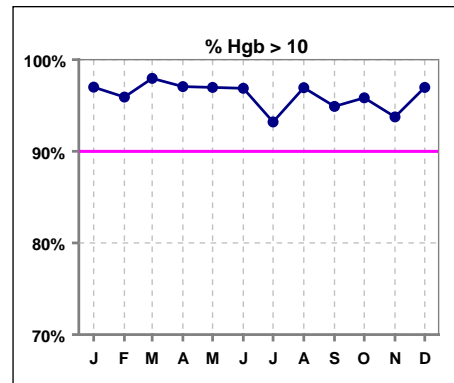
	Jan	Feb	Mar	Apr	May	Jun	Jul	Aug	Sep	Oct	Nov	Dec
<b># Access</b>	100	99	99	102	99	97	103	99	99	97	100	101
<b># Catheters</b>	10	12	10	12	13	10	14	13	11	10	11	11
<b>Network %</b>												
<b>Natl. % - 2004</b>	27%	27%	27%	27%	27%	27%	27%	27%	27%	27%	27%	27%
<b>% Catheters</b>	10%	12%	10%	12%	13%	10%	14%	13%	11%	10%	11%	11%



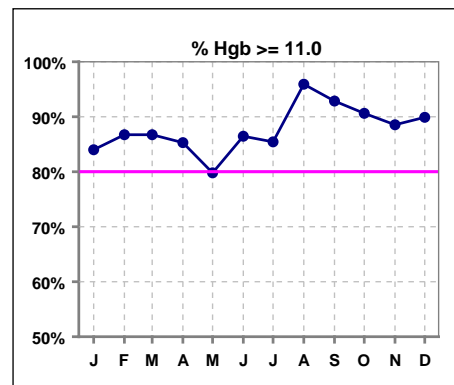
\*Methodology: a) Monthly values based on patient's monthly average of all values present for the month; b) Quarter values are average of all values for quarter; c) Values not averaged use last value present at months end.

**V. ANEMIA**

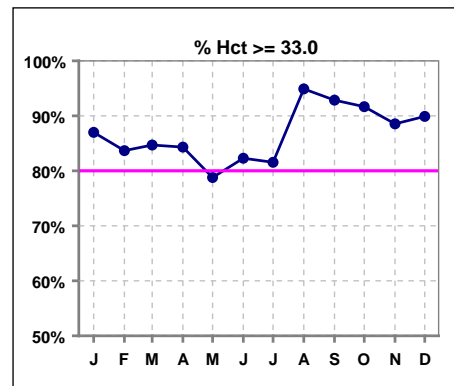
	Jan	Feb	Mar	Apr	May	Jun	Jul	Aug	Sep	Oct	Nov	Dec
# Hgb	100	98	98	102	99	96	103	98	98	96	96	99
# Hgb > 10.0	97	94	96	99	96	93	96	95	93	92	90	96
Pop. Mean =	11.8	12.1	12.2	12.1	12.1	12.2	12.3	12.8	12.9	12.8	12.6	12.6
Std. Deviation =	1.1	1.4	1.3	1.2	1.3	1.3	1.4	1.3	1.4	1.4	1.6	1.4
Network Mean =	11.8	11.8	11.8	11.8	11.8	11.8	11.8	11.8	11.8	11.8	11.8	11.8
Natl. Mean =												
<b>% Hgb &gt; 10.0</b>	<b>97%</b>	<b>96%</b>	<b>98%</b>	<b>97%</b>	<b>97%</b>	<b>97%</b>	<b>93%</b>	<b>97%</b>	<b>95%</b>	<b>96%</b>	<b>94%</b>	<b>97%</b>



	Jan	Feb	Mar	Apr	May	Jun	Jul	Aug	Sep	Oct	Nov	Dec
# Hgb	100	98	98	102	99	96	103	98	98	96	96	99
# Hgb >= 11.0	84	85	85	87	79	83	88	94	91	87	85	89
Pop. Mean =	11.8	12.1	12.2	12.1	12.1	12.2	12.3	12.8	12.9	12.8	12.6	12.6
Std. Deviation =	1.1	1.4	1.3	1.2	1.3	1.3	1.4	1.3	1.4	1.4	1.6	1.4
Network Mean =	11.8	11.8	11.8	11.8	11.8	11.8	11.8	11.8	11.8	11.8	11.8	11.8
Natl. Mean =												
<b>% Hgb &gt;= 11.0</b>	<b>84%</b>	<b>87%</b>	<b>87%</b>	<b>85%</b>	<b>80%</b>	<b>86%</b>	<b>85%</b>	<b>96%</b>	<b>93%</b>	<b>91%</b>	<b>89%</b>	<b>90%</b>
<b>% Natl. &gt;= 11 2004</b>	<b>80%</b>	<b>80%</b>	<b>80%</b>	<b>80%</b>	<b>80%</b>	<b>80%</b>	<b>80%</b>	<b>80%</b>	<b>80%</b>	<b>80%</b>	<b>80%</b>	<b>80%</b>



	Jan	Feb	Mar	Apr	May	Jun	Jul	Aug	Sep	Oct	Nov	Dec
# Hct	100	98	98	102	99	96	103	98	98	96	96	99
# Hct >= 33.0	87	82	83	86	78	79	84	93	91	88	85	89
Pop. Mean =	36	36	37	37	36	37	37	38	39	39	38	38
Std. Deviation =	3.63	4.37	4.20	3.96	4.20	4.13	4.56	4.02	4.31	4.41	4.88	4.43
Network Mean =												
Natl. Mean =												
<b>% Hct &gt;= 33.0</b>	<b>87%</b>	<b>84%</b>	<b>85%</b>	<b>84%</b>	<b>79%</b>	<b>82%</b>	<b>82%</b>	<b>95%</b>	<b>93%</b>	<b>92%</b>	<b>89%</b>	<b>90%</b>



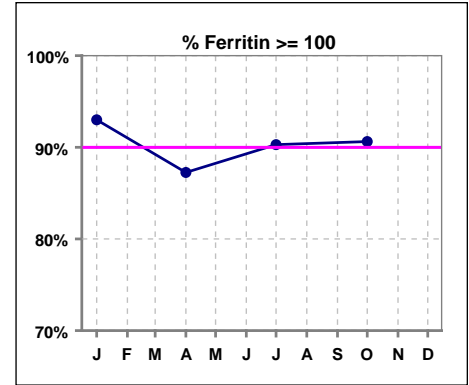
\*Methodology: a) Monthly values based on patient's monthly average of all values present for the month; b) Quarter values are average of all values for quarter; c) Values not averaged use last value present at months end.



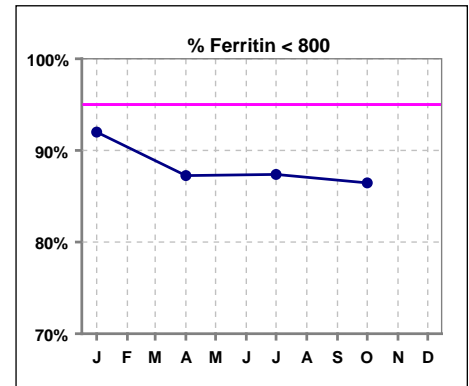
**V. ANEMIA - CONT.**

**Iron Profile**

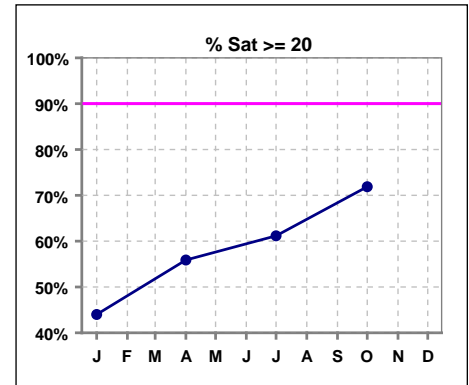
	Jan	Feb	Mar	Apr	May	Jun	Jul	Aug	Sep	Oct	Nov	Dec
# Ferritin	100			102			103			96		
# Ferritin >= 100	93			89			93			87		
Pop. Mean =	422			475			436			520		
Std. Deviation =	374			441			431			541		
Network Mean =												
Natl. Mean =												
<b>% Ferritin &gt;= 100</b>	<b>93%</b>			<b>87%</b>			<b>90%</b>			<b>91%</b>		
<b>%Natl. &gt;=100 2004</b>	<b>94%</b>			<b>94%</b>			<b>94%</b>			<b>94%</b>		



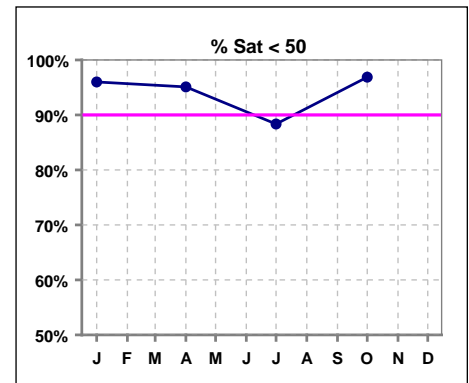
	Jan	Feb	Mar	Apr	May	Jun	Jul	Aug	Sep	Oct	Nov	Dec
# Ferritin	100			102			103			96		
# Ferritin < 800	92			89			90			83		
Pop. Mean =	422			475			436			520		
Std. Deviation =	374			441			431			541		
Network Mean =												
Natl. Mean =												
<b>% Ferritin &lt; 800</b>	<b>92%</b>			<b>87%</b>			<b>87%</b>			<b>86%</b>		



	Jan	Feb	Mar	Apr	May	Jun	Jul	Aug	Sep	Oct	Nov	Dec
# % Sat	100			102			103			96		
# % Sat >= 20	44			57			63			69		
Pop. Mean =	21			24			27			26		
Std. Deviation =	11			13			18			12		
Network Mean =												
Natl. Mean =												
<b>% Sat% &gt;= 20</b>	<b>44%</b>			<b>56%</b>			<b>61%</b>			<b>72%</b>		
<b>%Natl. &gt;=20 2004</b>	<b>81%</b>			<b>81%</b>			<b>81%</b>			<b>81%</b>		



	Jan	Feb	Mar	Apr	May	Jun	Jul	Aug	Sep	Oct	Nov	Dec
# % Sat	100			102			103			96		
# % Sat < 50	96			97			91			93		
Pop. Mean =	21			24			27			26		
Std. Deviation =	11			13			18			12		
Network Mean =												
Natl. Mean =												
<b>% Sat% &lt; 50</b>	<b>96%</b>			<b>95%</b>			<b>88%</b>			<b>97%</b>		



\*Methodology: a) Monthly values based on patient's monthly average of all values present for the month; b) Quarter values are average of all values for quarter; c) Values not averaged use last value present at months end.