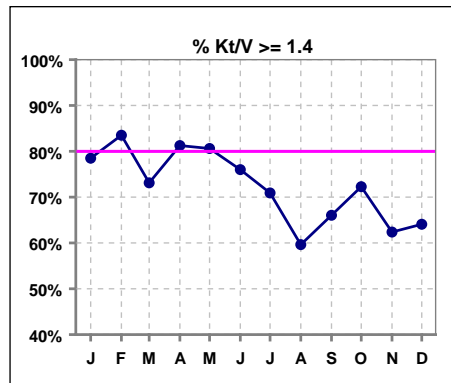


**I. ADEQUACY OF DIALYSIS**

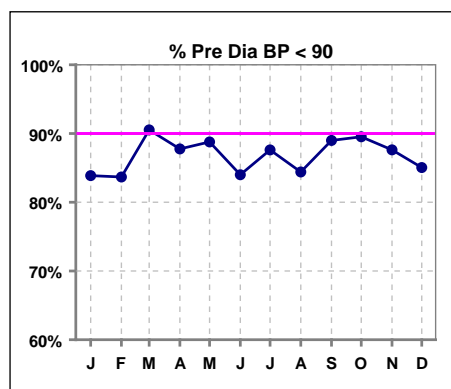
	Jan	Feb	Mar	Apr	May	Jun	Jul	Aug	Sep	Oct	Nov	Dec
# Kt/V	93	97	93	96	98	100	110	109	106	101	101	103
# Kt/V >= 1.4	73	81	68	78	79	76	78	65	70	73	63	66
Pop. Mean =	1.67	1.67	1.59	1.68	1.64	1.63	1.65	1.61	1.49	1.50	1.44	1.47
Std. Deviation =	0.30	0.30	0.40	0.51	0.29	0.31	0.54	1.30	0.26	0.25	0.28	0.34
Network Mean =	1.59	1.59	1.59	1.59	1.59	1.59	1.59	1.59	1.59	1.59	1.59	1.59
Natl. Mean =												
<b>% Kt/V &gt;= 1.4</b>	<b>78%</b>	<b>84%</b>	<b>73%</b>	<b>81%</b>	<b>81%</b>	<b>76%</b>	<b>71%</b>	<b>60%</b>	<b>66%</b>	<b>72%</b>	<b>62%</b>	<b>64%</b>
**% Kt/V >= 1.2	95%	96%	90%	96%	95%	93%	92%	85%	90%	90%	84%	84%

\*\* As of Apr. '04

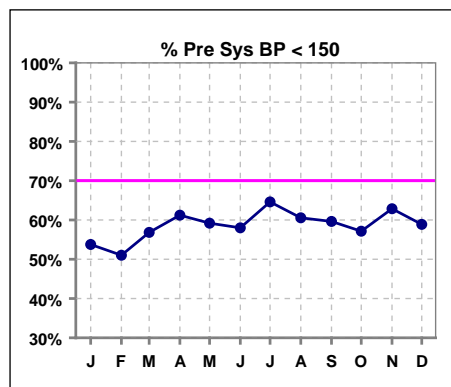


**Blood Pressure Control (Pre)**

	Jan	Feb	Mar	Apr	May	Jun	Jul	Aug	Sep	Oct	Nov	Dec
# Pre Dia BP	93	98	95	98	98	100	113	109	109	105	105	107
# Pre Dia BP < 90	78	82	86	86	87	84	99	92	97	94	92	91
Pop. Mean =	77	76	75	75	75	75	74	75	75	75	74	74
Std. Deviation =	16.0	15.4	11.5	11.5	12.2	12.3	13.2	13.8	14.7	12.2	14.3	13.1
Network Mean =												
Natl. Mean =												
<b>% Pre Dia BP &lt; 90</b>	<b>84%</b>	<b>84%</b>	<b>91%</b>	<b>88%</b>	<b>89%</b>	<b>84%</b>	<b>88%</b>	<b>84%</b>	<b>89%</b>	<b>90%</b>	<b>88%</b>	<b>85%</b>



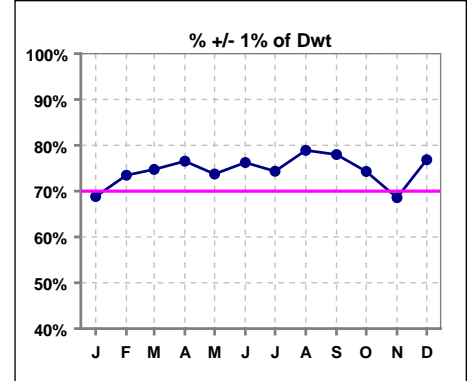
	Jan	Feb	Mar	Apr	May	Jun	Jul	Aug	Sep	Oct	Nov	Dec
# Pre Sys BP	93	98	95	98	98	100	113	109	109	105	105	107
# Pre Sys BP < 150	50	50	54	60	58	58	73	66	65	60	66	63
Pop. Mean =	148	148	147	147	146	146	142	144	144	146	143	143
Std. Deviation =	19.6	20.0	17.6	19.1	22.9	22.5	22.4	22.6	21.6	20.7	22.1	23.3
Network Mean =												
Natl. Mean =												
<b>% Pre Sys BP &lt; 150</b>	<b>54%</b>	<b>51%</b>	<b>57%</b>	<b>61%</b>	<b>59%</b>	<b>58%</b>	<b>65%</b>	<b>61%</b>	<b>60%</b>	<b>57%</b>	<b>63%</b>	<b>59%</b>



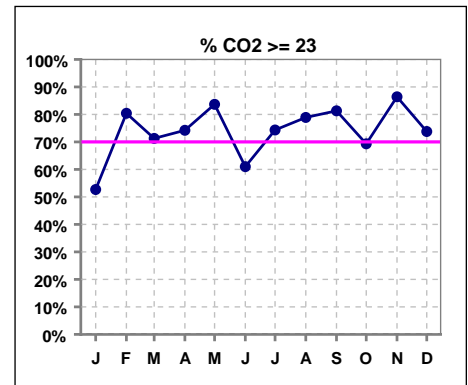
\*Methodology: a) Monthly values based on patient's monthly average of all values present for the month; b) Quarter values are average of all values for quarter; c) Values not averaged use last value present at months end.

**I. ADEQUACY OF DIALYSIS - CONT.**

	Jan	Feb	Mar	Apr	May	Jun	Jul	Aug	Sep	Oct	Nov	Dec
# Post/Dwt	93	98	95	98	99	101	113	109	109	105	105	108
# +/- 1% of Dwt	64	72	71	75	73	77	84	86	85	78	72	83
<b>% +/- 1 % of Dwt</b>	<b>69%</b>	<b>73%</b>	<b>75%</b>	<b>77%</b>	<b>74%</b>	<b>76%</b>	<b>74%</b>	<b>79%</b>	<b>78%</b>	<b>74%</b>	<b>69%</b>	<b>77%</b>



	Jan	Feb	Mar	Apr	May	Jun	Jul	Aug	Sep	Oct	Nov	Dec
# CO2	93	97	94	97	98	100	113	109	107	101	103	103
# CO2 >= 23	49	78	67	72	82	61	84	86	87	70	89	76
Pop. Mean =	22	25	24	24	25	23	24	24	25	24	25	24
Std. Deviation =	2.97	2.71	2.98	3.24	2.65	3.43	3.50	2.84	2.92	2.79	2.44	2.95
Network Mean =												
Natl. Mean =												
<b>% CO2 &gt;= 23</b>	<b>53%</b>	<b>80%</b>	<b>71%</b>	<b>74%</b>	<b>84%</b>	<b>61%</b>	<b>74%</b>	<b>79%</b>	<b>81%</b>	<b>69%</b>	<b>86%</b>	<b>74%</b>



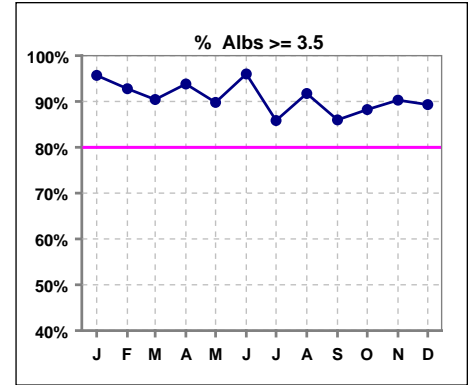
\*Methodology: a) Monthly values based on patient's monthly average of all values present for the month; b) Quarter values are average of all values for quarter; c) Values not averaged use last value present at months end.

\*Albumin values use BCG method - as of July 2001

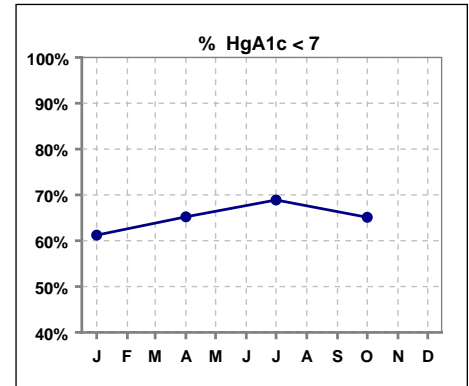
**II. NUTRITION**

	Jan	Feb	Mar	Apr	May	Jun	Jul	Aug	Sep	Oct	Nov	Dec
# Albumin	93	97	94	97	98	100	113	109	107	102	103	103
# Albumin >= 3.5	89	90	85	91	88	96	97	100	92	90	93	92
Pop. Mean =	4.0	4.0	4.0	4.0	4.0	4.0	3.8	3.9	3.8	3.8	3.9	3.9
Std. Deviation =	0.33	0.35	0.40	0.42	0.35	0.29	0.45	0.41	0.39	0.41	0.41	0.35
Network Mean =	3.4	3.4	3.4	3.4	3.4	3.4	3.4	3.4	3.4	3.4	3.4	3.4
Natl. Mean =	3.8	3.8	3.8	3.8	3.8	3.8	3.8	3.8	3.8	3.8	3.8	3.8
<b>% Alb &gt;= 3.5</b>	<b>96%</b>	<b>93%</b>	<b>90%</b>	<b>94%</b>	<b>90%</b>	<b>96%</b>	<b>86%</b>	<b>92%</b>	<b>86%</b>	<b>88%</b>	<b>90%</b>	<b>89%</b>
<b>% Alb &gt;= 4.0</b>	<b>56%</b>	<b>61%</b>	<b>57%</b>	<b>62%</b>	<b>56%</b>	<b>66%</b>	<b>48%</b>	<b>49%</b>	<b>31%</b>	<b>44%</b>	<b>56%</b>	<b>56%</b>
*Natl % >= 3.5-BCG	81%	81%	81%	81%	81%	81%	81%	81%	81%	81%	81%	81%
*Natl. % >= 4.0-BCG	39%	39%	39%	39%	39%	39%	39%	39%	39%	39%	39%	39%

\*Figures for 2004



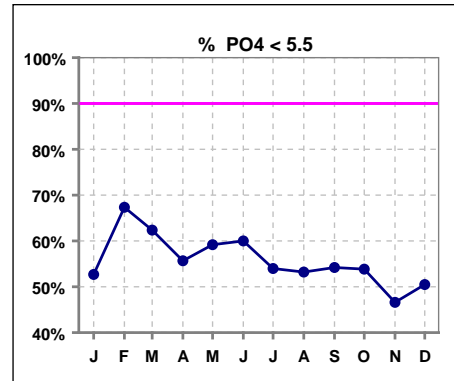
	Jan	Feb	Mar	Apr	May	Jun	Jul	Aug	Sep	Oct	Nov	Dec
# HgA1c	49			46			45			43		
# HgA1c < 7	30			30			31			28		
Pop. Mean =	6.9			6.7			6.6			6.6		
Std. Deviation =	1.72			1.45			1.43			1.72		
Network Mean =												
Natl. Mean =												
<b>% HgA1c &lt; 7</b>	<b>61%</b>			<b>65%</b>			<b>69%</b>			<b>65%</b>		



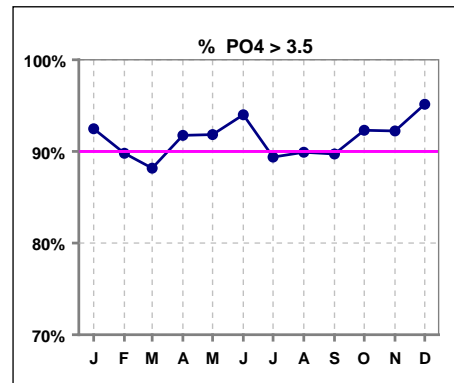
\*Methodology: a) Monthly values based on patient's monthly average of all values present for the month; b) Quarter values are average of all values for quarter; c) Values not averaged use last value present at months end.

**III. OSTEODYSTROPHY**

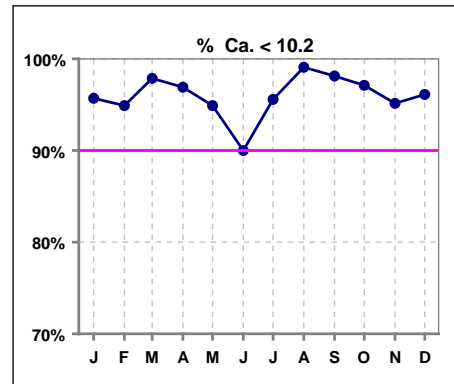
	Jan	Feb	Mar	Apr	May	Jun	Jul	Aug	Sep	Oct	Nov	Dec
# PO4	93	98	93	97	98	100	113	109	107	104	103	103
# PO4 < 5.5	49	66	58	54	58	60	61	58	58	56	48	52
Pop. Mean =	5.4	5.0	5.2	5.4	5.3	5.3	5.5	5.5	5.5	5.6	5.6	5.7
Std. Deviation =	1.48	1.27	1.35	1.53	1.27	1.32	1.73	1.69	1.57	1.59	1.61	1.79
Network Mean =												
Natl. Mean =												
<b>% PO4 &lt; 5.5</b>	<b>53%</b>	<b>67%</b>	<b>62%</b>	<b>56%</b>	<b>59%</b>	<b>60%</b>	<b>54%</b>	<b>53%</b>	<b>54%</b>	<b>54%</b>	<b>47%</b>	<b>50%</b>



	Jan	Feb	Mar	Apr	May	Jun	Jul	Aug	Sep	Oct	Nov	Dec
# PO4	93	98	93	97	98	100	113	109	107	104	103	103
# PO4 > 3.5	86	88	82	89	90	94	101	98	96	96	95	98
Pop. Mean =	5.4	5.0	5.2	5.4	5.3	5.3	5.5	5.5	5.5	5.6	5.6	5.7
Std. Deviation =	1.48	1.27	1.35	1.53	1.27	1.32	1.73	1.69	1.57	1.59	1.61	1.79
Network Mean =												
Natl. Mean =												
<b>% PO4 &gt; 3.5</b>	<b>92%</b>	<b>90%</b>	<b>88%</b>	<b>92%</b>	<b>92%</b>	<b>94%</b>	<b>89%</b>	<b>90%</b>	<b>90%</b>	<b>92%</b>	<b>92%</b>	<b>95%</b>



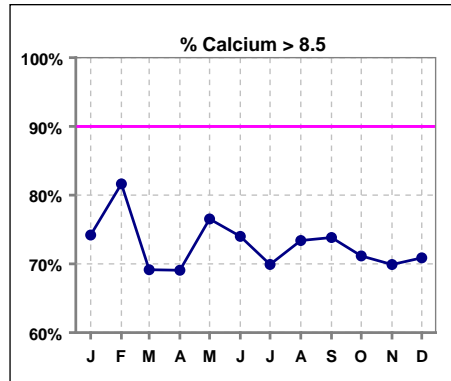
	Jan	Feb	Mar	Apr	May	Jun	Jul	Aug	Sep	Oct	Nov	Dec
# Calcium	93	98	94	97	98	100	113	109	107	104	103	103
# Calcium < 10.2	89	93	92	94	93	90	108	108	105	101	98	99
Pop. Mean =	8.9	9.0	8.8	8.8	8.9	9.1	8.9	8.9	8.9	8.9	8.9	8.9
Std. Deviation =	0.76	0.75	0.69	0.79	0.67	0.81	0.75	0.70	0.68	0.66	0.78	0.67
Network Mean =												
Natl. Mean =												
<b>% Ca &lt; 10.2</b>	<b>96%</b>	<b>95%</b>	<b>98%</b>	<b>97%</b>	<b>95%</b>	<b>90%</b>	<b>96%</b>	<b>99%</b>	<b>98%</b>	<b>97%</b>	<b>95%</b>	<b>96%</b>



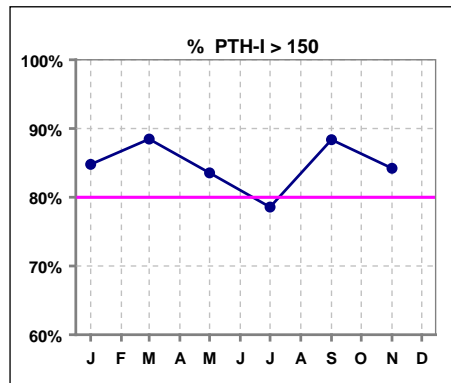
\*Methodology: a) Monthly values based on patient's monthly average of all values present for the month; b) Quarter values are average of all values for quarter; c) Values not averaged use last value present at months end.

**III. OSTEODYSTROPHY - CONT.**

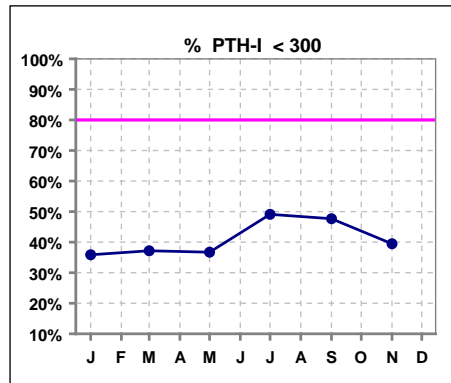
	Jan	Feb	Mar	Apr	May	Jun	Jul	Aug	Sep	Oct	Nov	Dec
# Calcium	93	98	94	97	98	100	113	109	107	104	103	103
# Calcium > 8.5	69	80	65	67	75	74	79	80	79	74	72	73
Pop. Mean =	8.9	9.0	8.8	8.8	8.9	9.1	8.9	8.9	8.9	8.9	8.9	8.9
Std. Deviation =	0.76	0.75	0.69	0.79	0.67	0.81	0.75	0.70	0.68	0.66	0.78	0.67
Network Mean =												
Natl. Mean =												
<b>% Calcium &gt; 8.5</b>	<b>74%</b>	<b>82%</b>	<b>69%</b>	<b>69%</b>	<b>77%</b>	<b>74%</b>	<b>70%</b>	<b>73%</b>	<b>74%</b>	<b>71%</b>	<b>70%</b>	<b>71%</b>



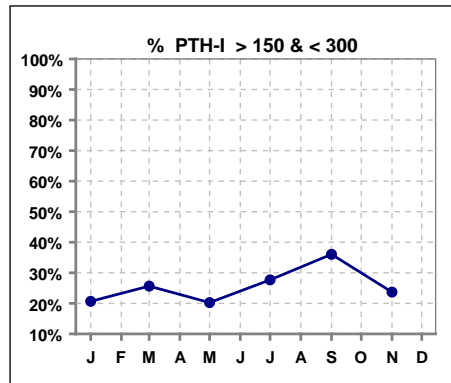
	Jan	Feb	Mar	Apr	May	Jun	Jul	Aug	Sep	Oct	Nov	Dec
# PTH-I	92		78		79		112		86		76	
# PTH-I > 150	78		69		66		88		76		64	
Pop. Mean =	528		558		622		489		499		594	
Std. Deviation =	552		602		691		615		668		667	
Network Mean =												
Natl. Mean =												
<b>% PTH-I &gt; 150</b>	<b>85%</b>		<b>88%</b>		<b>84%</b>		<b>79%</b>		<b>88%</b>		<b>84%</b>	



	Jan	Feb	Mar	Apr	May	Jun	Jul	Aug	Sep	Oct	Nov	Dec
# PTH-I	92		78		79		112		86		76	
# PTH-I < 300	33		29		29		55		41		30	
Pop. Mean =	528		558		622		489		499		594	
Std. Deviation =	552		602		691		615		668		667	
Network Mean =												
Natl. Mean =												
<b>% PTH-I &lt; 300</b>	<b>36%</b>		<b>37%</b>		<b>37%</b>		<b>49%</b>		<b>48%</b>		<b>39%</b>	



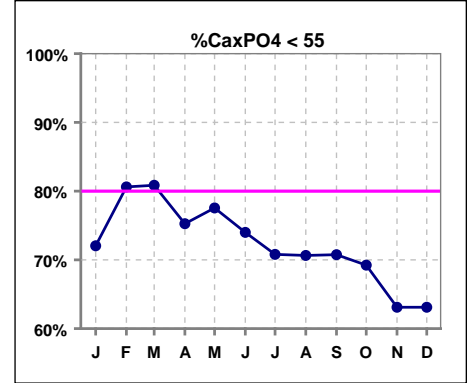
	Jan	Feb	Mar	Apr	May	Jun	Jul	Aug	Sep	Oct	Nov	Dec
# PTH-I	92		78		79		112		86		76	
# PTH-I >150 & <300	19		20		16		31		31		18	
Pop. Mean =	528		558		622		489		499		594	
Std. Deviation =	552		602		691		615		668		667	
Network Mean =												
Natl. Mean =												
<b>% PTH-I &gt;150 &amp; &lt;300</b>	<b>21%</b>		<b>26%</b>		<b>20%</b>		<b>28%</b>		<b>36%</b>		<b>24%</b>	



\*Methodology: a) Monthly values based on patient's monthly average of all values present for the month; b) Quarter values are average of all values for quarter; c) Values not averaged use last value present at months end.

**III. OSTEODYSTROPHY - CONT.**

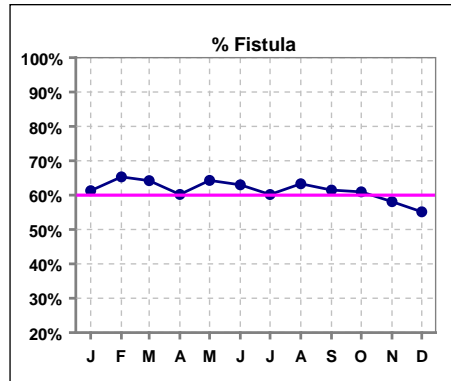
	Jan	Feb	Mar	Apr	May	Jun	Jul	Aug	Sep	Oct	Nov	Dec
# Ca x PO4	93	98	94	97	98	100	113	109	106	104	103	103
# Ca x PO4 < 55	67	79	76	73	76	74	80	77	75	72	65	65
Pop. Mean =	48.4	44.9	45.5	47.8	47.0	48.4	48.4	48.2	49.3	48.9	50.1	51.2
Std. Deviation =	13.1	11.9	12.4	14.1	11.0	12.4	14.1	13.9	13.8	13.4	13.5	16.4
Network Mean =												
Natl. Mean =												
<b>% CaxPO4 &lt; 55</b>	<b>72%</b>	<b>81%</b>	<b>81%</b>	<b>75%</b>	<b>78%</b>	<b>74%</b>	<b>71%</b>	<b>71%</b>	<b>71%</b>	<b>69%</b>	<b>63%</b>	<b>63%</b>



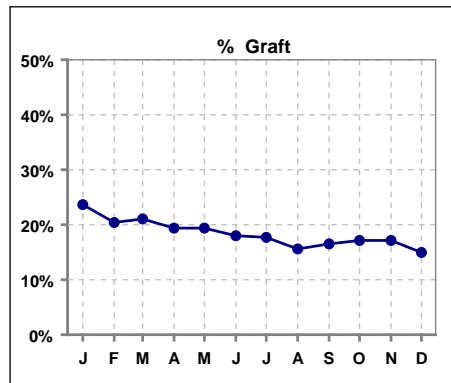
\*Methodology: a) Monthly values based on patient's monthly average of all values present for the month; b) Quarter values are average of all values for quarter; c) Values not averaged use last value present at months end.

**IV. ACCESS**

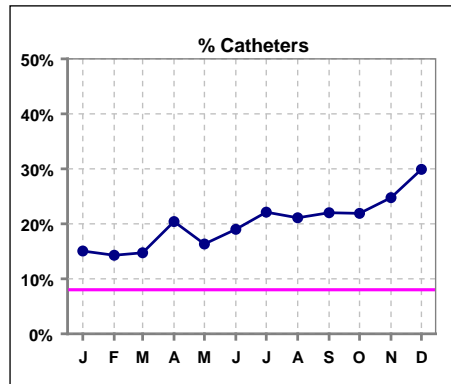
	Jan	Feb	Mar	Apr	May	Jun	Jul	Aug	Sep	Oct	Nov	Dec
<b># Access</b>	93	98	95	98	98	100	113	109	109	105	105	107
<b># Fistula</b>	57	64	61	59	63	63	68	69	67	64	61	59
<b>Network % - 2004</b>	55%	55%	55%	55%	55%	55%	55%	55%	55%	55%	55%	55%
<b>Natl. % - 2004</b>	35%	35%	35%	35%	35%	35%	35%	35%	35%	35%	35%	35%
<b>% Fistula</b>	61%	65%	64%	60%	64%	63%	60%	63%	61%	61%	58%	55%



	Jan	Feb	Mar	Apr	May	Jun	Jul	Aug	Sep	Oct	Nov	Dec
<b># Access</b>	93	98	95	98	98	100	113	109	109	105	105	107
<b># Graft</b>	22	20	20	19	19	18	20	17	18	18	18	16
<b>Network %</b>												
<b>Natl. %</b>												
<b>% Graft</b>	24%	20%	21%	19%	19%	18%	18%	16%	17%	17%	17%	15%



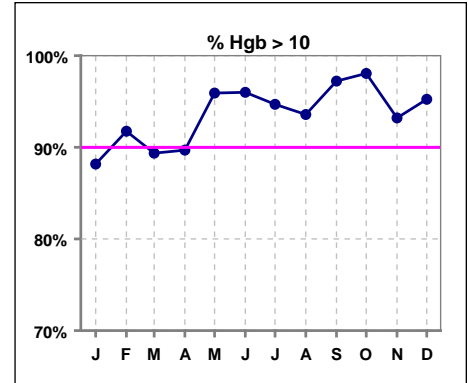
	Jan	Feb	Mar	Apr	May	Jun	Jul	Aug	Sep	Oct	Nov	Dec
<b># Access</b>	93	98	95	98	98	100	113	109	109	105	105	107
<b># Catheters</b>	14	14	14	20	16	19	25	23	24	23	26	32
<b>Network %</b>												
<b>Natl. % - 2004</b>	27%	27%	27%	27%	27%	27%	27%	27%	27%	27%	27%	27%
<b>% Catheters</b>	15%	14%	15%	20%	16%	19%	22%	21%	22%	22%	25%	30%



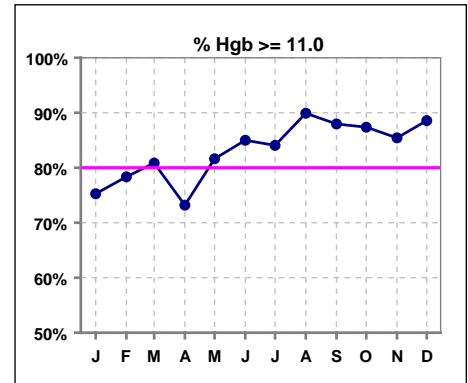
\*Methodology: a) Monthly values based on patient's monthly average of all values present for the month; b) Quarter values are average of all values for quarter; c) Values not averaged use last value present at months end.

**V. ANEMIA**

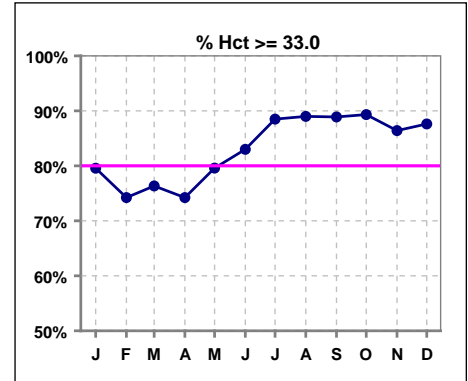
	Jan	Feb	Mar	Apr	May	Jun	Jul	Aug	Sep	Oct	Nov	Dec
# Hgb	93	97	94	97	98	100	113	109	108	103	103	105
# Hgb > 10.0	82	89	84	87	94	96	107	102	105	101	96	100
Pop. Mean =	11.7	11.9	11.8	12.0	12.1	12.5	12.6	12.9	12.9	12.7	12.5	12.4
Std. Deviation =	1.3	1.3	1.4	1.6	1.4	1.5	1.7	1.6	1.5	1.5	1.6	1.4
Network Mean =	11.8	11.8	11.8	11.8	11.8	11.8	11.8	11.8	11.8	11.8	11.8	11.8
Natl. Mean =												
<b>% Hgb &gt; 10.0</b>	<b>88%</b>	<b>92%</b>	<b>89%</b>	<b>90%</b>	<b>96%</b>	<b>96%</b>	<b>95%</b>	<b>94%</b>	<b>97%</b>	<b>98%</b>	<b>93%</b>	<b>95%</b>



	Jan	Feb	Mar	Apr	May	Jun	Jul	Aug	Sep	Oct	Nov	Dec
# Hgb	93	97	94	97	98	100	113	109	108	103	103	105
# Hgb >= 11.0	70	76	76	71	80	85	95	98	95	90	88	93
Pop. Mean =	11.7	11.9	11.8	12.0	12.1	12.5	12.6	12.9	12.9	12.7	12.5	12.4
Std. Deviation =	1.3	1.3	1.4	1.6	1.4	1.5	1.7	1.6	1.5	1.5	1.6	1.4
Network Mean =	11.8	11.8	11.8	11.8	11.8	11.8	11.8	11.8	11.8	11.8	11.8	11.8
Natl. Mean =												
<b>% Hgb &gt;= 11.0</b>	<b>75%</b>	<b>78%</b>	<b>81%</b>	<b>73%</b>	<b>82%</b>	<b>85%</b>	<b>84%</b>	<b>90%</b>	<b>88%</b>	<b>87%</b>	<b>85%</b>	<b>89%</b>
<b>% Natl. &gt;= 11 2004</b>	<b>80%</b>	<b>80%</b>	<b>80%</b>	<b>80%</b>	<b>80%</b>	<b>80%</b>	<b>80%</b>	<b>80%</b>	<b>80%</b>	<b>80%</b>	<b>80%</b>	<b>80%</b>



	Jan	Feb	Mar	Apr	May	Jun	Jul	Aug	Sep	Oct	Nov	Dec
# Hct	93	97	93	97	98	100	113	109	108	103	103	105
# Hct >= 33.0	74	72	71	72	78	83	100	97	96	92	89	92
Pop. Mean =	36	36	35	36	37	38	38	39	39	38	38	37
Std. Deviation =	4.00	3.80	4.33	4.89	4.39	4.65	5.20	4.94	4.74	4.49	4.76	4.42
Network Mean =												
Natl. Mean =												
<b>% Hct &gt;= 33.0</b>	<b>80%</b>	<b>74%</b>	<b>76%</b>	<b>74%</b>	<b>80%</b>	<b>83%</b>	<b>88%</b>	<b>89%</b>	<b>89%</b>	<b>89%</b>	<b>86%</b>	<b>88%</b>



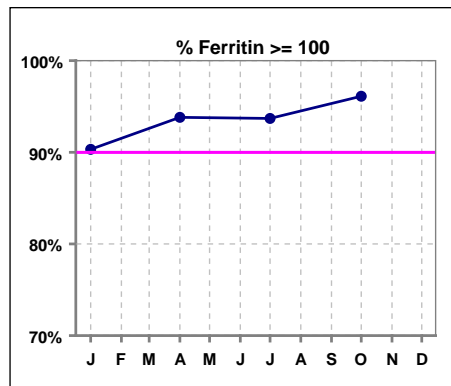
\*Methodology: a) Monthly values based on patient's monthly average of all values present for the month; b) Quarter values are average of all values for quarter; c) Values not averaged use last value present at months end.



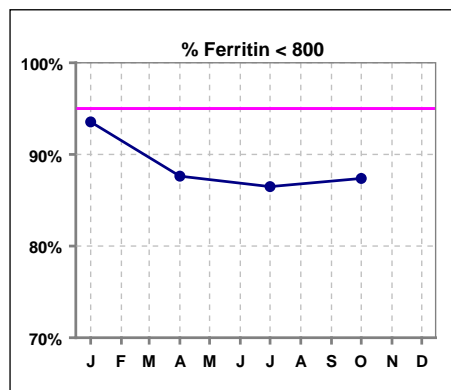
**V. ANEMIA - CONT.**

**Iron Profile**

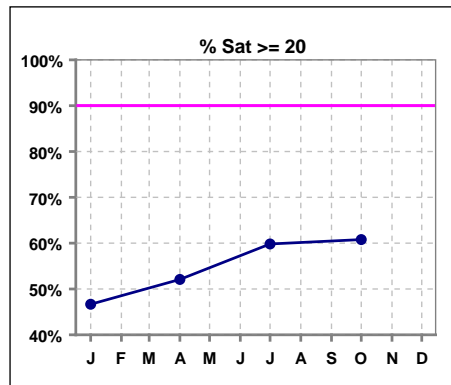
	Jan	Feb	Mar	Apr	May	Jun	Jul	Aug	Sep	Oct	Nov	Dec
# Ferritin	93			97			111			103		
# Ferritin >= 100	84			91			104			99		
Pop. Mean =	398			452			653			511		
Std. Deviation =	229			310			1604			349		
Network Mean =												
Natl. Mean =												
<b>% Ferritin &gt;= 100</b>	90%			94%			94%			96%		
<b>%Natl. &gt;=100 2004</b>	94%			94%			94%			94%		



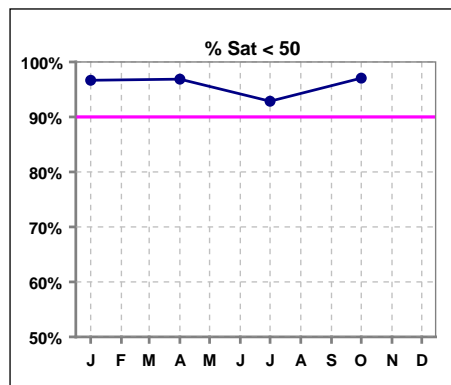
	Jan	Feb	Mar	Apr	May	Jun	Jul	Aug	Sep	Oct	Nov	Dec
# Ferritin	93			97			111			103		
# Ferritin < 800	87			85			96			90		
Pop. Mean =	398			452			653			511		
Std. Deviation =	229			310			1604			349		
Network Mean =												
Natl. Mean =												
<b>% Ferritin &lt; 800</b>	94%			88%			86%			87%		



	Jan	Feb	Mar	Apr	May	Jun	Jul	Aug	Sep	Oct	Nov	Dec
# % Sat	90			96			112			102		
# % Sat >= 20	42			50			67			62		
Pop. Mean =	21			22			26			26		
Std. Deviation =	12			13			15			13		
Network Mean =												
Natl. Mean =												
<b>% Sat% &gt;= 20</b>	47%			52%			60%			61%		
<b>%Natl. &gt;=20 2004</b>	81%			81%			81%			81%		



	Jan	Feb	Mar	Apr	May	Jun	Jul	Aug	Sep	Oct	Nov	Dec
# % Sat	90			96			112			102		
# % Sat < 50	87			93			104			99		
Pop. Mean =	21			22			26			26		
Std. Deviation =	12			13			15			13		
Network Mean =												
Natl. Mean =												
<b>% Sat% &lt; 50</b>	97%			97%			93%			97%		



\*Methodology: a) Monthly values based on patient's monthly average of all values present for the month; b) Quarter values are average of all values for quarter; c) Values not averaged use last value present at months end.