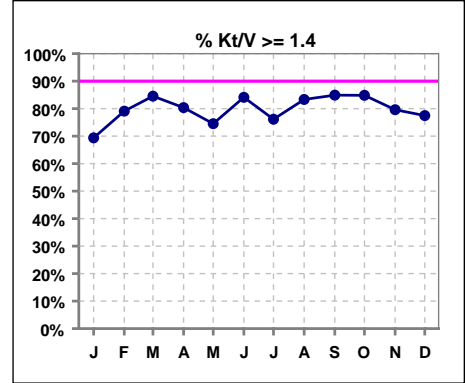


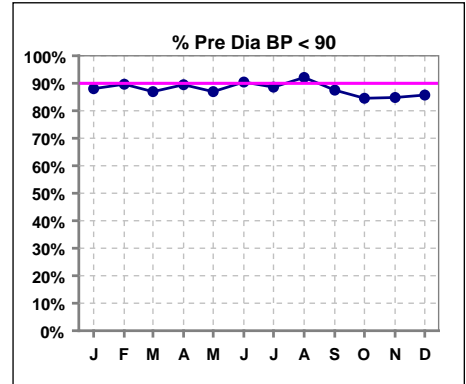
**I. ADEQUACY OF DIALYSIS**

	Jan	Feb	Mar	Apr	May	Jun	Jul	Aug	Sep	Oct	Nov	Dec
# Kt/V	111	110	110	107	106	107	109	108	106	99	103	111
# Kt/V >= 1.4	77	87	93	86	79	90	83	90	90	84	82	86
Pop. Mean	1.57	1.66	1.65	1.72	1.74	1.70	1.65	1.69	1.72	1.78	1.84	1.71
Std. Deviation	0.43	0.36	0.33	0.49	0.62	0.38	0.36	0.44	0.46	0.56	0.66	0.59
Network Mean '04	1.59	1.59	1.59	1.59	1.59	1.59	1.59	1.59	1.59	1.59	1.59	1.59
Natl. Mean '06							1.55	1.55	1.55	1.55	1.55	1.55
<b>% Kt/V &gt;= 1.4</b>	<b>69%</b>	<b>79%</b>	<b>85%</b>	<b>80%</b>	<b>75%</b>	<b>84%</b>	<b>76%</b>	<b>83%</b>	<b>85%</b>	<b>85%</b>	<b>80%</b>	<b>77%</b>
<b>% Kt/V &gt;= 1.2</b>	<b>88%</b>	<b>94%</b>	<b>93%</b>	<b>93%</b>	<b>86%</b>	<b>93%</b>	<b>89%</b>	<b>91%</b>	<b>93%</b>	<b>95%</b>	<b>91%</b>	<b>89%</b>
<b>Network % &gt;= 1.2 '06</b>	<b>92%</b>	<b>92%</b>	<b>92%</b>	<b>92%</b>	<b>92%</b>	<b>92%</b>	<b>92%</b>	<b>89%</b>	<b>89%</b>	<b>89%</b>	<b>89%</b>	<b>89%</b>
<b>Natl. % &gt;= 1.2 '06</b>	<b>89%</b>	<b>89%</b>	<b>89%</b>	<b>89%</b>	<b>89%</b>	<b>89%</b>	<b>89%</b>	<b>90%</b>	<b>90%</b>	<b>90%</b>	<b>90%</b>	<b>90%</b>

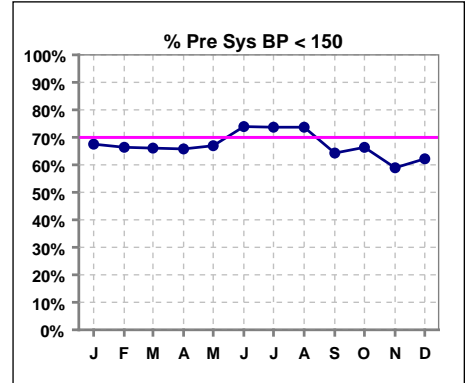


**Blood Pressure Control (Pre)**

	Jan	Feb	Mar	Apr	May	Jun	Jul	Aug	Sep	Oct	Nov	Dec
# Pre Dia BP	117	116	115	114	115	115	114	114	112	110	112	119
# Pre Dia BP < 90	103	104	100	102	100	104	101	105	98	93	95	102
Pop. Mean	73	73	74	73	73	73	72	71	72	73	75	74
Std. Deviation	13.6	12.6	14.2	13.2	13.9	12.5	13.2	13.4	14.1	14.4	14.7	13.6
Network Mean												
Natl. Mean												
<b>% Pre Dia BP &lt; 90</b>	<b>88%</b>	<b>90%</b>	<b>87%</b>	<b>89%</b>	<b>87%</b>	<b>90%</b>	<b>89%</b>	<b>92%</b>	<b>88%</b>	<b>85%</b>	<b>85%</b>	<b>86%</b>



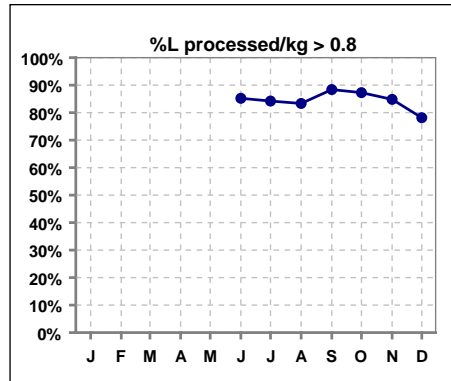
	Jan	Feb	Mar	Apr	May	Jun	Jul	Aug	Sep	Oct	Nov	Dec
# Pre Sys BP	117	116	115	114	115	115	114	114	112	110	112	119
# Pre Sys BP < 150	79	77	76	75	77	85	84	84	72	73	66	74
Pop. Mean	140	141	142	141	141	138	138	136	140	142	146	144
Std. Deviation	23.7	22.7	21.0	21.5	21.7	20.0	18.8	20.5	20.4	21.0	22.2	22.2
Network Mean												
Natl. Mean												
<b>% Pre Sys BP &lt; 150</b>	<b>68%</b>	<b>66%</b>	<b>66%</b>	<b>66%</b>	<b>67%</b>	<b>74%</b>	<b>74%</b>	<b>74%</b>	<b>64%</b>	<b>66%</b>	<b>59%</b>	<b>62%</b>



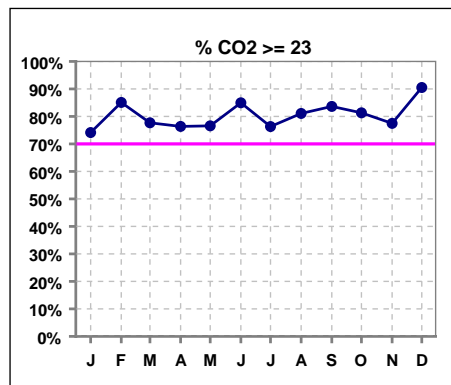
\*Methodology: a) Monthly values based on patient's monthly average of all values present for the month; b) Quarter values are average of all values for quarter; c) Values not averaged use last value present at months end.

**I. ADEQUACY OF DIALYSIS - CONT.**

	Jan	Feb	Mar	Apr	May	Jun	Jul	Aug	Sep	Oct	Nov	Dec
# L processed/kg						115	114	114	112	110	112	119
# L processed/kg>0.8						98	96	95	99	96	95	93
Pop. Mean						1	1	1	1	1	1	1
Std. Deviation						0.3	0.3	0.3	0.3	0.3	0.3	0.3
Network Mean												
Natl. Mean												
<b>% L processed/kg&gt;0.8</b>						<b>85%</b>	<b>84%</b>	<b>83%</b>	<b>88%</b>	<b>87%</b>	<b>85%</b>	<b>78%</b>



	Jan	Feb	Mar	Apr	May	Jun	Jul	Aug	Sep	Oct	Nov	Dec
# CO2	116	114	112	110	111	113	114	111	110	107	111	116
# CO2 >= 23	86	97	87	84	85	96	87	90	92	87	86	105
Pop. Mean	25	26	25	25	25	26	24	25	26	25	25	27
Std. Deviation	2.98	3.23	3.51	3.54	3.20	3.38	3.23	3.41	3.10	2.95	3.31	2.97
Network Mean												
Natl. Mean												
<b>% CO2 &gt;= 23</b>	<b>74%</b>	<b>85%</b>	<b>78%</b>	<b>76%</b>	<b>77%</b>	<b>85%</b>	<b>76%</b>	<b>81%</b>	<b>84%</b>	<b>81%</b>	<b>77%</b>	<b>91%</b>

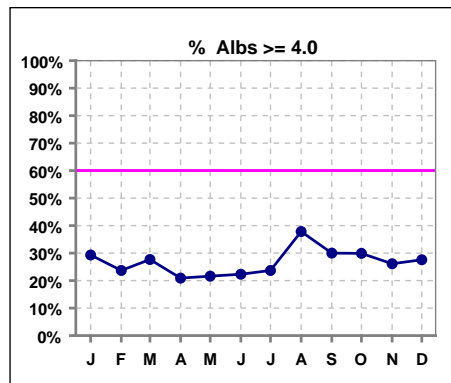


\*Methodology: a) Monthly values based on patient's monthly average of all values present for the month; b) Quarter values are average of all values for quarter; c) Values not averaged use last value present at months end.

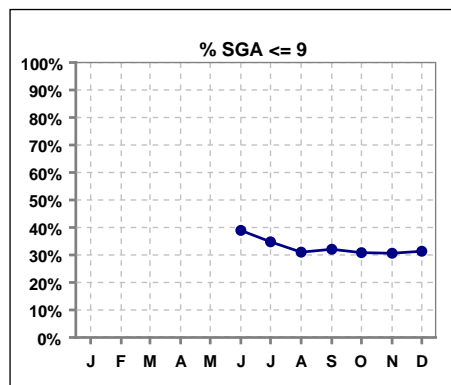
\*Albumin values use BCG method - as of July 2001

**II. NUTRITION**

	Jan	Feb	Mar	Apr	May	Jun	Jul	Aug	Sep	Oct	Nov	Dec
# Albumin	116	114	112	110	111	112	114	111	110	107	111	116
# Albumin >= 4.0	34	27	31	23	24	25	27	42	33	32	29	32
Pop. Mean	3.7	3.7	3.7	3.6	3.6	3.6	3.6	3.7	3.7	3.7	3.7	3.7
Std. Deviation	0.43	0.40	0.46	0.52	0.43	0.45	0.51	0.54	0.46	0.48	0.44	0.50
Network Mean	3.4	3.4	3.4	3.4	3.4	3.4	3.4	3.4	3.4	3.4	3.4	3.4
Natl. Mean	3.8	3.8	3.8	3.8	3.8	3.8	3.8	3.8	3.8	3.8	3.8	3.8
% Alb >= 3.5	68%	71%	70%	71%	70%	71%	75%	72%	71%	77%	72%	69%
% Alb >= 3.0	93%	94%	96%	88%	93%	92%	89%	92%	92%	93%	95%	90%
<b>% Alb &gt;= 4.0</b>	<b>29%</b>	<b>24%</b>	<b>28%</b>	<b>21%</b>	<b>22%</b>	<b>22%</b>	<b>24%</b>	<b>38%</b>	<b>30%</b>	<b>30%</b>	<b>26%</b>	<b>28%</b>
Netwk%>=3.5 '06	75%	75%	75%	75%	75%	75%	75%	82%	82%	82%	82%	82%
Netwk%>=4.0 '06	25%	25%	25%	25%	25%	25%	25%	34%	34%	34%	34%	34%
Natl % >= 3.5 '06	81%	81%	81%	81%	81%	81%	81%	81%	81%	81%	81%	81%
Natl. % >= 4.0 '06	39%	39%	39%	39%	39%	39%	39%	34%	34%	34%	34%	34%



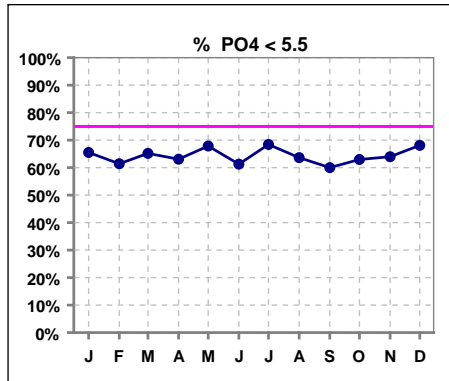
	Jan	Feb	Mar	Apr	May	Jun	Jul	Aug	Sep	Oct	Nov	Dec
# SGA						113	115	116	106	107	111	118
# SGA <=9						44	40	36	34	33	34	37
Pop. Mean						12	12	12	12	12	12	12
Std. Deviation						6.0	6.0	5.6	5.2	5.3	5.1	5.8
Network Mean												
Natl. Mean												
<b>% SGA &lt;= 9</b>						<b>39%</b>	<b>35%</b>	<b>31%</b>	<b>32%</b>	<b>31%</b>	<b>31%</b>	<b>31%</b>



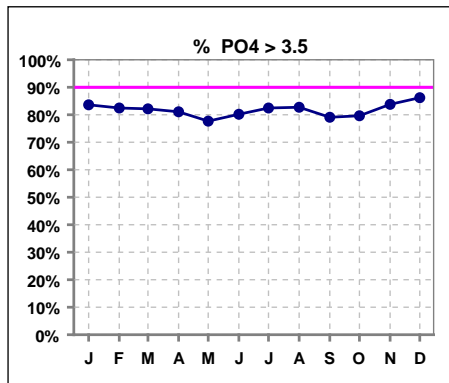
\*Methodology: a) Monthly values based on patient's monthly average of all values present for the month; b) Quarter values are average of all values for quarter; c) Values not averaged use last value present at months end.

**III. OSTEODYSTROPHY**

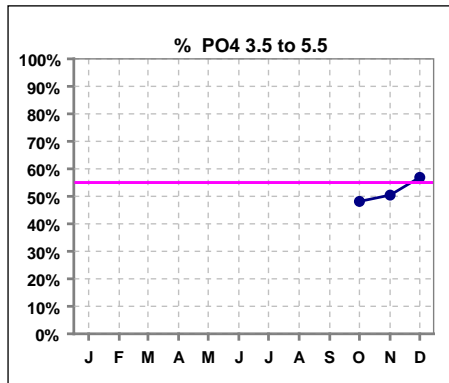
	Jan	Feb	Mar	Apr	May	Jun	Jul	Aug	Sep	Oct	Nov	Dec
# PO4	116	114	112	111	112	111	114	110	110	108	111	116
# PO4 < 5.5	76	70	73	70	76	68	78	70	66	68	71	79
Pop. Mean	4.9	5.1	5.0	4.9	4.9	5.1	4.9	5.1	5.1	5.0	5.0	5.0
Std. Deviation	1.47	1.66	1.48	1.50	1.69	1.80	1.54	1.82	1.66	1.59	1.44	1.56
Network Mean												
Natl. Mean '06												
<b>% PO4 &lt; 5.5</b>	<b>66%</b>	<b>61%</b>	<b>65%</b>	<b>63%</b>	<b>68%</b>	<b>61%</b>	<b>68%</b>	<b>64%</b>	<b>60%</b>	<b>63%</b>	<b>64%</b>	<b>68%</b>



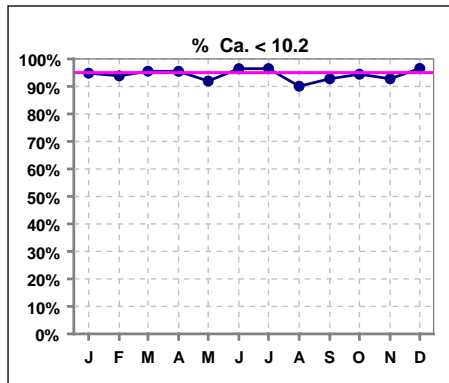
	Jan	Feb	Mar	Apr	May	Jun	Jul	Aug	Sep	Oct	Nov	Dec
# PO4	116	114	112	111	112	111	114	110	110	108	111	116
# PO4 > 3.5	97	94	92	90	87	89	94	91	87	86	93	100
Pop. Mean	4.9	5.1	5.0	4.9	4.9	5.1	4.9	5.1	5.1	5.0	5.0	5.0
Std. Deviation	1.47	1.66	1.48	1.50	1.69	1.80	1.54	1.82	1.66	1.59	1.44	1.56
Network Mean												
Natl. Mean '06												
<b>% PO4 &gt; 3.5</b>	<b>84%</b>	<b>82%</b>	<b>82%</b>	<b>81%</b>	<b>78%</b>	<b>80%</b>	<b>82%</b>	<b>83%</b>	<b>79%</b>	<b>80%</b>	<b>84%</b>	<b>86%</b>



	Jan	Feb	Mar	Apr	May	Jun	Jul	Aug	Sep	Oct	Nov	Dec
# PO4										108	111	116
# PO4 3.5 to 5.5										52	56	66
Pop. Mean										5.0	5.0	5.0
Std. Deviation										1.59	1.44	1.56
Network Mean												
<b>% PO4 3.5 to 5.5</b>										<b>48%</b>	<b>50%</b>	<b>57%</b>



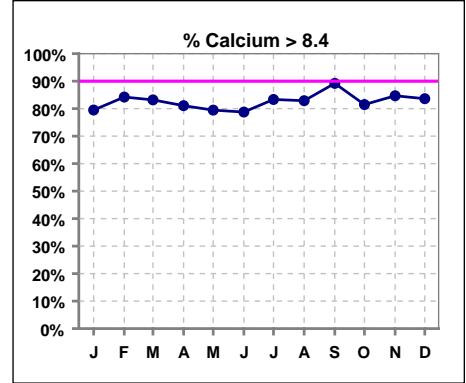
	Jan	Feb	Mar	Apr	May	Jun	Jul	Aug	Sep	Oct	Nov	Dec
# Calcium	116	114	112	111	112	113	114	111	111	108	111	116
# Calcium < 10.2	110	107	107	106	103	109	110	100	103	102	103	112
Pop. Mean	9.0	9.0	9.1	9.0	9.1	9.0	9.0	9.1	9.1	9.1	9.1	9.0
Std. Deviation	0.65	0.74	0.68	0.79	0.83	0.73	0.69	0.72	0.85	0.73	0.71	0.71
Network Mean												
Natl. Mean '06												
<b>% Ca &lt; 10.2</b>	<b>95%</b>	<b>94%</b>	<b>96%</b>	<b>95%</b>	<b>92%</b>	<b>96%</b>	<b>96%</b>	<b>90%</b>	<b>93%</b>	<b>94%</b>	<b>93%</b>	<b>97%</b>



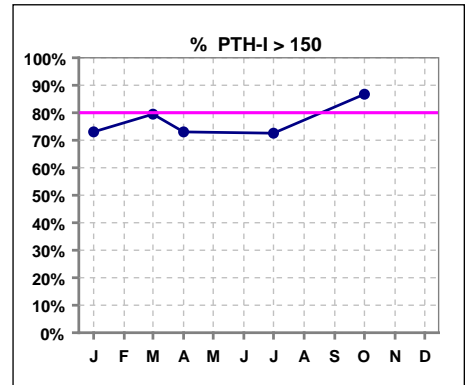
\*Methodology: a) Monthly values based on patient's monthly average of all values present for the month; b) Quarter values are average of all values for quarter; c) Values not averaged use last value present at months end.

**III. OSTEODYSTROPHY - CONT.**

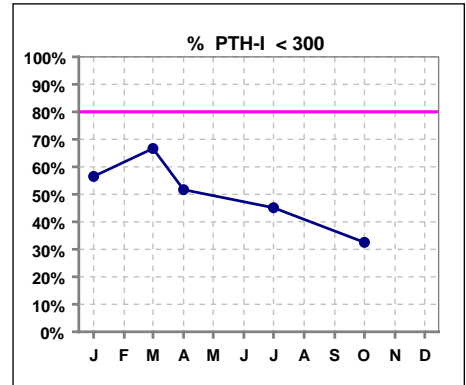
	Jan	Feb	Mar	Apr	May	Jun	Jul	Aug	Sep	Oct	Nov	Dec
# Calcium	117	114	113	111	112	113	114	111	111	108	111	116
# Calcium > 8.4	93	96	94	90	89	89	95	92	99	88	94	97
Pop. Mean	9.0	9.0	9.1	9.0	9.1	9.0	9.0	9.1	9.1	9.1	9.1	9.0
Std. Deviation	0.65	0.74	0.68	0.79	0.83	0.73	0.69	0.72	0.85	0.73	0.71	0.71
Network Mean												
Natl. Mean '06	9	9	9	9	9	9	9	9	9	9	9	9
<b>% Calcium &gt; 8.4</b>	<b>79%</b>	<b>84%</b>	<b>83%</b>	<b>81%</b>	<b>79%</b>	<b>79%</b>	<b>83%</b>	<b>83%</b>	<b>89%</b>	<b>81%</b>	<b>85%</b>	<b>84%</b>



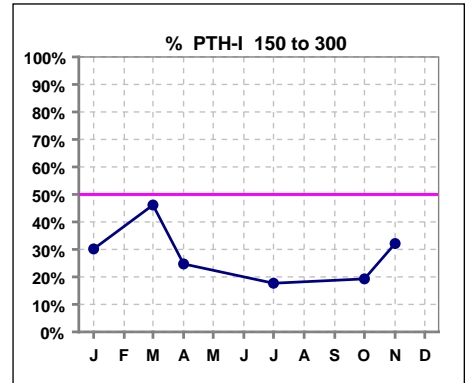
	Jan	Feb	Mar	Apr	May	Jun	Jul	Aug	Sep	Oct	Nov	Dec
# PTH-I	115		39	89			113			83		
# PTH-I > 150	84		31	65			82			72		
Pop. Mean	399		266	398			468			516		
Std. Deviation	409		167	363			535			385		
Network Mean												
Natl. Mean												
<b>% PTH-I &gt; 150</b>	<b>73%</b>		<b>79%</b>	<b>73%</b>			<b>73%</b>			<b>87%</b>		



	Jan	Feb	Mar	Apr	May	Jun	Jul	Aug	Sep	Oct	Nov	Dec
# PTH-I	115		39	89			113			83		
# PTH-I < 300	65		26	46			51			27		
Pop. Mean	399		266	398			468			516		
Std. Deviation	409		167	363			535			385		
Network Mean												
Natl. Mean												
<b>% PTH-I &lt; 300</b>	<b>57%</b>		<b>67%</b>	<b>52%</b>			<b>45%</b>			<b>33%</b>		



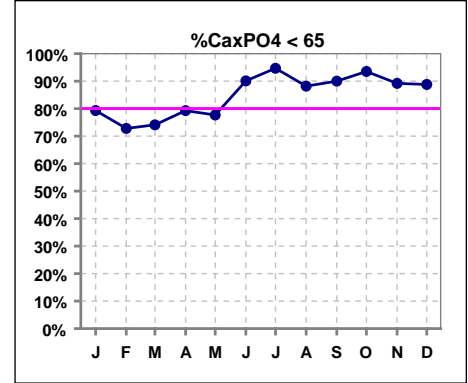
	Jan	Feb	Mar	Apr	May	Jun	Jul	Aug	Sep	Oct	Nov	Dec
# PTH-I	116		39	89			113			83	28	
# PTH-I 150 to 300	35		18	22			20			16	9	
Pop. Mean	398		266	398			468			516	446	
Std. Deviation	408		167	363			535			385	358	
Network Mean												
Natl. Mean												
<b>% PTH-I 150 to 300</b>	<b>30%</b>		<b>46%</b>	<b>25%</b>			<b>18%</b>			<b>19%</b>	<b>32%</b>	



\*Methodology: a) Monthly values based on patient's monthly average of all values present for the month; b) Quarter values are average of all values for quarter; c) Values not averaged use last value present at months end.

**III. OSTEODYSTROPHY - CONT.**

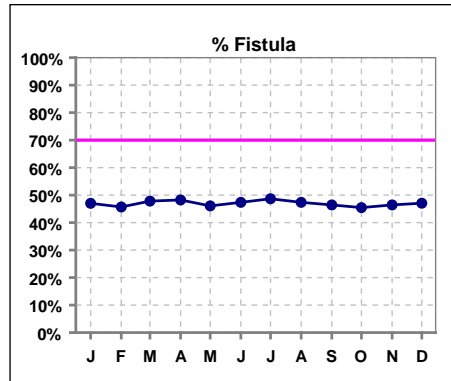
	Jan	Feb	Mar	Apr	May	Jun	Jul	Aug	Sep	Oct	Nov	Dec
# Ca x PO4	116	114	112	111	112	111	113	110	110	108	111	116
# Ca x PO4 < 55	92	83	83	88	87							
# Ca x PO4 < 65						100	107	97	99	101	99	103
Pop. Mean	44.6	45.7	45.2	44.3	44.5	46.2	43.9	47.1	46.0	44.7	45.4	45.1
Std. Deviation	14.0	14.8	13.1	14.1	15.7	16.3	13.7	17.1	15.3	14.1	14.0	14.1
Network Mean												
Natl. Mean												
<b>% CaxPO4 &lt; 65</b>	<b>79%</b>	<b>73%</b>	<b>74%</b>	<b>79%</b>	<b>78%</b>	<b>90%</b>	<b>95%</b>	<b>88%</b>	<b>90%</b>	<b>94%</b>	<b>89%</b>	<b>89%</b>



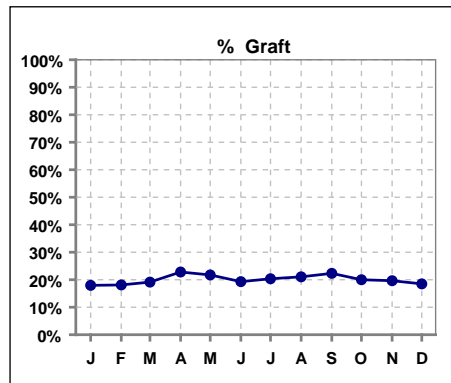
\*Methodology: a) Monthly values based on patient's monthly average of all values present for the month; b) Quarter values are average of all values for quarter; c) Values not averaged use last value present at months end.

**IV. ACCESS**

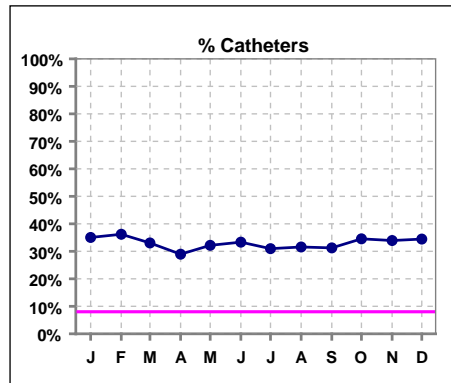
	Jan	Feb	Mar	Apr	May	Jun	Jul	Aug	Sep	Oct	Nov	Dec
# Access	117	116	115	114	115	114	113	114	112	110	112	119
# Fistula	55	53	55	55	53	54	55	54	52	50	52	56
Network % '06	58%	58%	58%	58%	58%	58%	58%	61%	61%	61%	61%	61%
Natl. % '06	39%	39%	39%	39%	39%	39%	39%	45%	45%	45%	45%	45%
% Fistula	47%	46%	48%	48%	46%	47%	49%	47%	46%	45%	46%	47%



	Jan	Feb	Mar	Apr	May	Jun	Jul	Aug	Sep	Oct	Nov	Dec
# Access	117	116	115	114	115	114	113	114	112	110	112	119
# Graft	21	21	22	26	25	22	23	24	25	22	22	22
Network %												
Natl. %												
% Graft	18%	18%	19%	23%	22%	19%	20%	21%	22%	20%	20%	18%

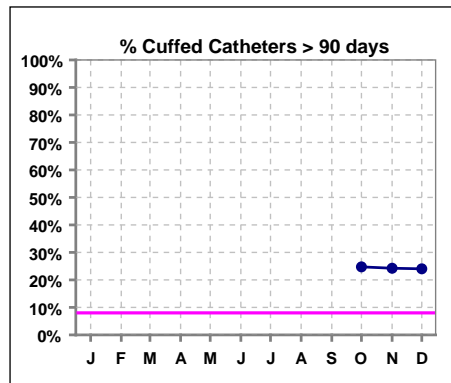


	Jan	Feb	Mar	Apr	May	Jun	Jul	Aug	Sep	Oct	Nov	Dec
# Access	117	116	115	114	115	114	113	114	112	110	112	119
# Catheters	41	42	38	33	37	38	35	36	35	38	38	41
Network % '06								22%	22%	22%	22%	22%
Natl. % '06	27%	27%	27%	27%	27%	27%	27%	29%	29%	29%	29%	29%
% Catheters	35%	36%	33%	29%	32%	33%	31%	32%	31%	35%	34%	34%



**Cuffed Catheters > 90 days**

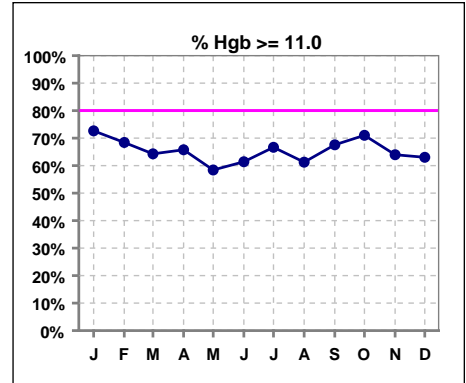
	Jan	Feb	Mar	Apr	May	Jun	Jul	Aug	Sep	Oct	Nov	Dec
# Access										110	112	119
# Cuffed Catheters										24	24	25
Network % '06										22%	22%	22%
Natl. % '06										29%	29%	29%
% Cuffed Catheters										25%	24%	24%



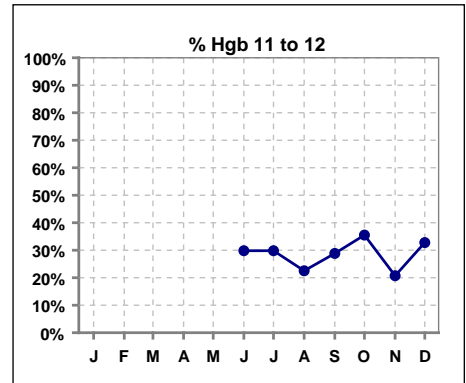
\*Methodology: a) Monthly values based on patient's monthly average of all values present for the month; b) Quarter values are average of all values for quarter; c) Values not averaged use last value present at months end.

**V. ANEMIA**

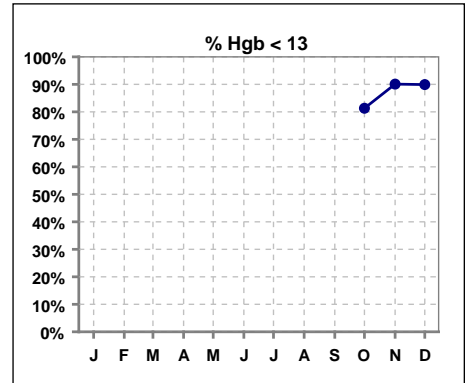
	Jan	Feb	Mar	Apr	May	Jun	Jul	Aug	Sep	Oct	Nov	Dec
# Hgb	117	114	112	111	113	114	114	111	111	107	111	119
# Hgb >= 11.0	85	78	72	73	66	70	76	68	75	76	71	75
Pop. Mean	11.6	11.5	11.5	11.4	11.3	11.3	11.5	11.5	11.7	11.6	11.5	11.3
Std. Deviation	1.2	1.2	1.4	1.3	1.5	1.4	1.4	1.4	1.4	1.3	1.4	1.3
Network Mean	11.8	11.8	11.8	11.8	11.8	11.8	11.8	11.8	11.8	11.8	11.8	11.8
Natl. Mean '06								12	12	12	12	12
<b>% Hgb &gt;= 11.0</b>	<b>73%</b>	<b>68%</b>	<b>64%</b>	<b>66%</b>	<b>58%</b>	<b>61%</b>	<b>67%</b>	<b>61%</b>	<b>68%</b>	<b>71%</b>	<b>64%</b>	<b>63%</b>
% Hgb <= 11.0	29%	34%	36%	38%	42%	39%	34%	39%	35%	30%	36%	39%
% Netwk >= 11 '06	80%	80%	80%	80%	80%	80%	80%	87%	87%	87%	87%	87%
% Natl. >= 11 '06	80%	80%	80%	80%	80%	80%	80%	84%	84%	84%	84%	84%



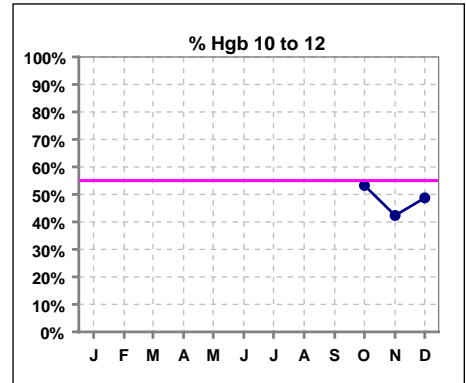
	Jan	Feb	Mar	Apr	May	Jun	Jul	Aug	Sep	Oct	Nov	Dec
# Hgb						114	114	111	111	107	111	119
# Hgb 11 to 12						34	34	25	32	38	23	39
Pop. Mean						11.3	11.5	11.5	11.7	11.6	11.5	11.3
Std. Deviation						1.4	1.4	1.4	1.4	1.3	1.4	1.3
Network Mean						11.8	11.8	11.8	11.8	11.8	11.8	11.8
Natl. Mean '06								12	12	12	12	12
<b>% Hgb 11 to 12</b>						<b>30%</b>	<b>30%</b>	<b>23%</b>	<b>29%</b>	<b>36%</b>	<b>21%</b>	<b>33%</b>



	Jan	Feb	Mar	Apr	May	Jun	Jul	Aug	Sep	Oct	Nov	Dec
# Hgb										107	111	119
# Hgb < 13										87	100	107
Pop. Mean										11.6	11.5	11.3
Std. Deviation										1.3	1.4	1.3
Network Mean										11.8	11.8	11.8
<b>% Hgb &lt; 13</b>										<b>81%</b>	<b>90%</b>	<b>90%</b>



	Jan	Feb	Mar	Apr	May	Jun	Jul	Aug	Sep	Oct	Nov	Dec
# Hgb										107	111	119
# Hgb 10 to 12										57	47	58
Pop. Mean										11.6	11.5	11.3
Std. Deviation										1.3	1.4	1.3
Network Mean										11.8	11.8	11.8
<b>% Hgb 10 to 12</b>										<b>53%</b>	<b>42%</b>	<b>49%</b>

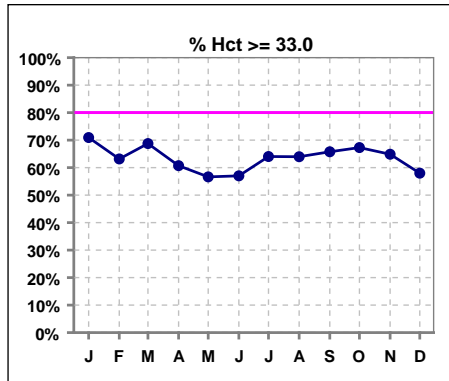


\*Methodology: a) Monthly values based on patient's monthly average of all values present for the month; b) Quarter values are average of all values for quarter; c) Values not averaged use last value present at months end.



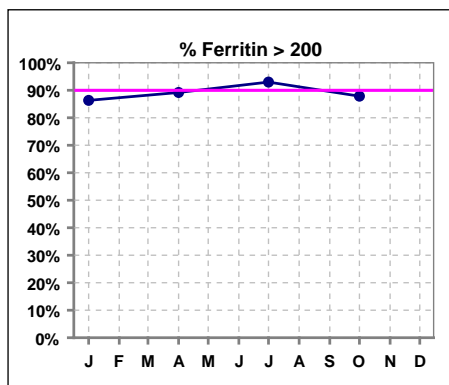
**V. ANEMIA - CONT.**

	Jan	Feb	Mar	Apr	May	Jun	Jul	Aug	Sep	Oct	Nov	Dec
# Hct	117	114	112	112	113	114	114	111	111	107	111	119
# Hct >= 33.0	83	72	77	68	64	65	73	71	73	72	72	69
Pop. Mean	35	34	35	34	34	34	34	35	35	35	34	34
Std. Deviation	3.62	3.84	4.20	3.98	4.49	4.16	4.19	4.35	4.28	3.92	4.06	3.99
Network Mean												
Natl. Mean												
<b>% Hct &gt;= 33.0</b>	71%	63%	69%	61%	57%	57%	64%	64%	66%	67%	65%	58%
<b>% Netwk &gt;= 33 '05</b>	94%	94%	94%	94%	94%	94%	94%	94%	94%	94%	94%	94%
<b>% Natl. &gt;= 33 '05</b>	92%	92%	92%	92%	92%	92%	92%	92%	92%	92%	92%	92%

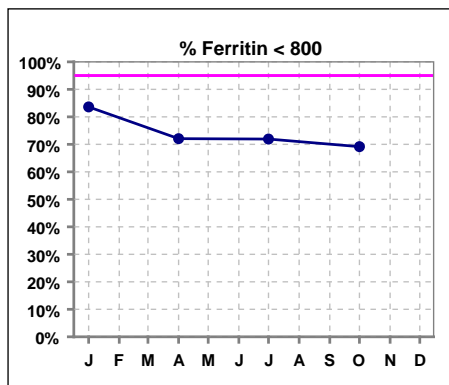


**Iron Profile**

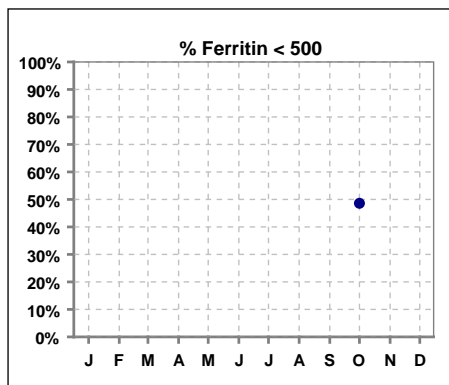
	Jan	Feb	Mar	Apr	May	Jun	Jul	Aug	Sep	Oct	Nov	Dec
# Ferritin	116			111			114			107		
# Ferritin >= 100	111			105								
# Ferritin > 200							106			94		
Pop. Mean	532			612			669			641		
Std. Deviation	328			385			442			500		
Network Mean												
Natl. Mean '06												
<b>% Ferritin &gt; 200</b>	86%			89%			93%			88%		
<b>% Netwk &gt;= 100 '06</b>	92%			92%			93%			93%		
<b>% Natl. &gt;=100 '06</b>	94%			94%			95%			95%		



	Jan	Feb	Mar	Apr	May	Jun	Jul	Aug	Sep	Oct	Nov	Dec
# Ferritin	116			111			114			107		
# Ferritin < 800	97			80			82			74		
Pop. Mean	532			612			669			641		
Std. Deviation	328			385			442			500		
Network Mean												
Natl. Mean '06												
<b>% Ferritin &lt; 800</b>	84%			72%			72%			69%		



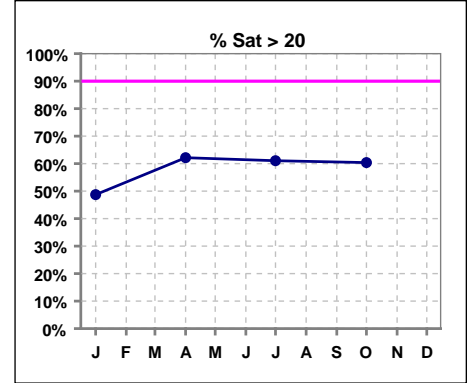
	Jan	Feb	Mar	Apr	May	Jun	Jul	Aug	Sep	Oct	Nov	Dec
# Ferritin										107		
# Ferritin < 500										52		
Pop. Mean										641		
Std. Deviation										500		
Network Mean												
<b>% Ferritin &lt; 500</b>										49%		



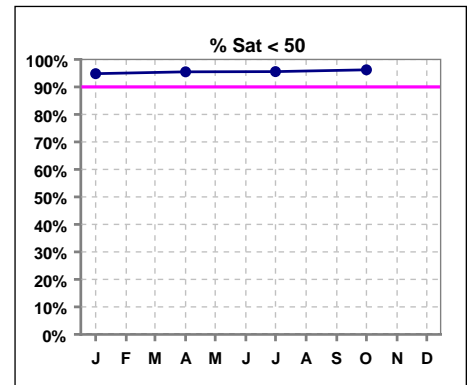
\*Methodology: a) Monthly values based on patient's monthly average of all values present for the month; b) Quarter values are average of all values for quarter; c) Values not averaged use last value present at months end.

**V. ANEMIA - CONT.**

	Jan	Feb	Mar	Apr	May	Jun	Jul	Aug	Sep	Oct	Nov	Dec
# % Sat	117			111			113			106		
# % Sat > 20	57			69			69			64		
Pop. Mean	23			25			25			25		
Std. Deviation	14			13			11			13		
Network Mean												
Natl. Mean '06	28			28			28			28		
<b>% Sat% &gt; 20</b>	49%			62%			61%			60%		
<b>% Netwk &gt;= 20 '06</b>	74%			74%			74%			74%		
<b>% Natl. &gt;=20 '06</b>	79%			79%			79%			79%		



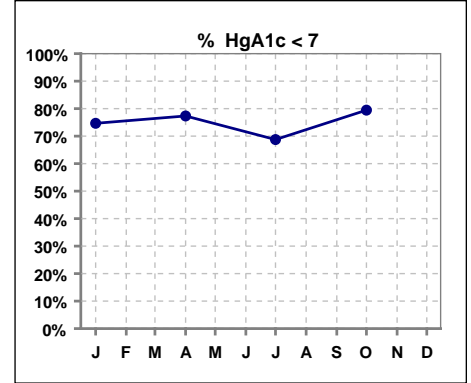
	Jan	Feb	Mar	Apr	May	Jun	Jul	Aug	Sep	Oct	Nov	Dec
# % Sat	116			111			113			106		
# % Sat < 50	110			106			108			102		
Pop. Mean	23			25			25			25		
Std. Deviation	14			13			11			13		
Network Mean												
Natl. Mean '06										28		
<b>% Sat% &lt; 50</b>	95%			95%			96%			96%		



\*Methodology: a) Monthly values based on patient's monthly average of all values present for the month; b) Quarter values are average of all values for quarter; c) Values not averaged use last value present at months end.

**VI. Diabetes**

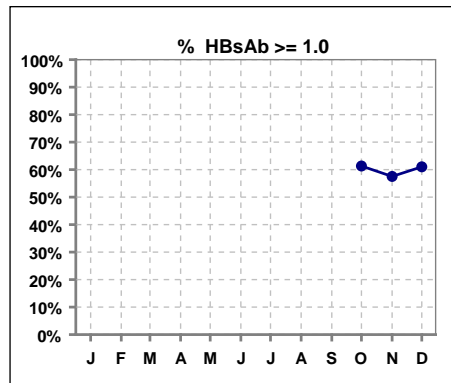
	Jan	Feb	Mar	Apr	May	Jun	Jul	Aug	Sep	Oct	Nov	Dec
# HgA1c	75			75			80			73		
# HgA1c < 7	56			58			55			58		
Pop. Mean	6.3			6.3			6.2			6.3		
Std. Deviation	1.48			1.32			1.29			1.20		
Network Mean												
Natl. Mean												
<b>% HgA1c &lt; 7</b>	<b>75%</b>			<b>77%</b>			<b>69%</b>			<b>79%</b>		



\*Methodology: a) Monthly values based on patient's monthly average of all values present for the month; b) Quarter values are average of all values for quarter; c) Values not averaged use last value present at months end.

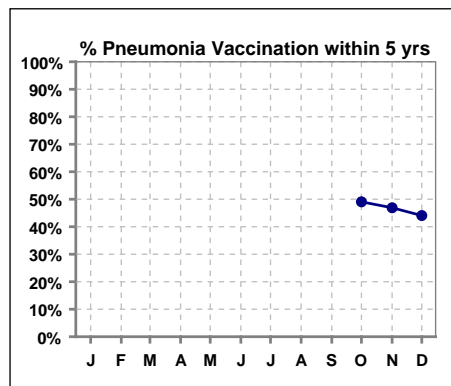
**VII. Infection Control**

	Jan	Feb	Mar	Apr	May	Jun	Jul	Aug	Sep	Oct	Nov	Dec
# Patient										106	113	118
# HBsAb >= 1.0										65	65	72
<b>% HBsAb &gt;= 1.0</b>										<b>61%</b>	<b>58%</b>	<b>61%</b>



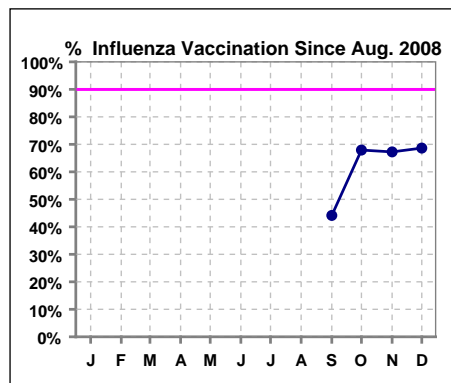
**Pneumonia vaccination within the past five years at NKC**

	Jan	Feb	Mar	Apr	May	Jun	Jul	Aug	Sep	Oct	Nov	Dec
# Patient										106	113	118
# Pneumonia										52	53	52
<b>% Pneumonia</b>										<b>49%</b>	<b>47%</b>	<b>44%</b>



**Influenza vaccination since August at NKC**

	Jan	Feb	Mar	Apr	May	Jun	Jul	Aug	Sep	Oct	Nov	Dec
# Patient								119	111	106	113	118
# Influenza since 08/08									49	72	76	81
<b>% Influenza</b>									<b>44%</b>	<b>68%</b>	<b>67%</b>	<b>69%</b>



\*Methodology: a) Monthly values based on patient's monthly average of all values present for the month; b) Quarter values are average of all values for quarter; c) Values not averaged use last value present at months end.