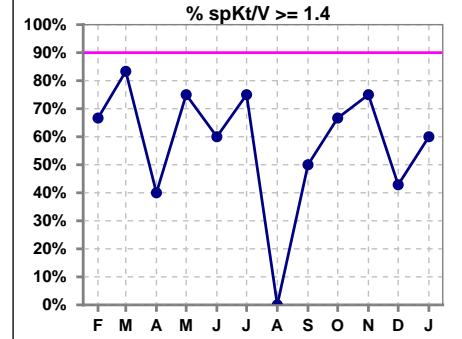
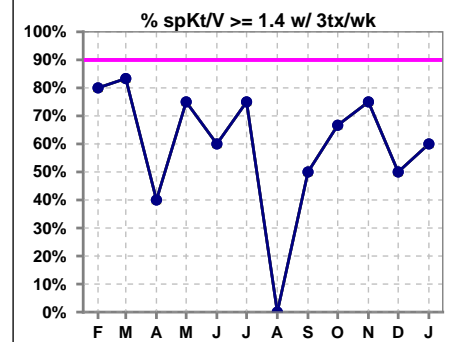


## I. ADEQUACY OF DIALYSIS

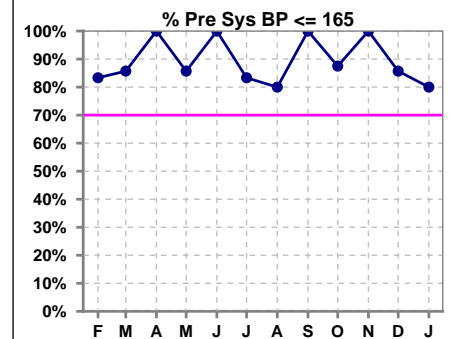
	Feb	Mar	Apr	May	Jun	Jul	Aug	Sep	Oct	Nov	Dec	Jan
# spKt/V	6	6	5	4	5	4	1	4	6	4	7	5
# spKt/V >= 1.4	4	5	2	3	3	3	0	2	4	3	3	3
Pop. Mean	1.49	1.50	1.44	1.66	1.50	1.59	1.22	1.54	1.46	1.53	1.27	1.44
Std. Deviation	0.28	0.12	0.47	0.41	0.27	0.23	0	0.37	0.48	0.21	0.27	0.17
% spKt/V >= 1.4	67%	83%	40%	75%	60%	75%	0%	50%	67%	75%	43%	60%
% spKt/V >= 1.2	83%	100%	80%	100%	100%	100%	100%	75%	83%	100%	71%	100%



	Feb	Mar	Apr	May	Jun	Jul	Aug	Sep	Oct	Nov	Dec	Jan
# spKt/V w/ 3tx/wk	5	6	5	4	5	4	1	4	6	4	6	5
# spKt/V >= 1.4 w/3tx/wk	4	5	2	3	3	3	0	2	4	3	3	3
Pop. Mean	1.55	1.50	1.44	1.66	1.50	1.59	1.22	1.54	1.46	1.53	1.28	1.44
Std. Deviation	0.25	0.12	0.47	0.41	0.27	0.23	0	0.37	0.48	0.21	0.29	0.17
% spKt/V >= 1.4 w/3tx/wk	80%	83%	40%	75%	60%	75%	0%	50%	67%	75%	50%	60%



	Feb	Mar	Apr	May	Jun	Jul	Aug	Sep	Oct	Nov	Dec	Jan
# Pre Sys BP	6	7	6	7	7	6	5	8	8	4	7	5
# Pre Sys BP <= 165	5	6	6	6	7	5	4	8	8	4	6	4
Pop. Mean	144	144	135	136	131	133	155	145	139	132	143	143
Std. Deviation	19.4	19.7	20.2	20.9	14.0	21.8	10.3	9.1	18.8	15.5	23.4	18.0
% Pre Sys BP <= 165	83%	86%	100%	86%	100%	83%	80%	100%	88%	100%	86%	80%



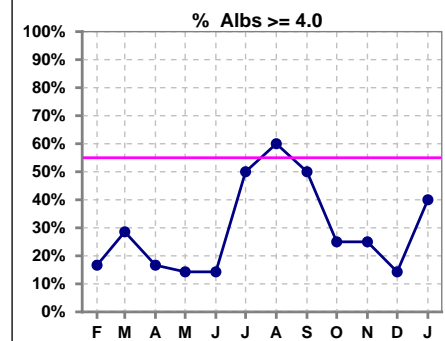
**Kirkland Kidney Center - Center Hemodialysis**  
 Quality Assurance Reports (Patients in first 90 days of treatment)  
 Through period ending Jan. 31, 2026

2

\*Albumin values use BCG method - as of July 2001

## II. NUTRITION

	Feb	Mar	Apr	May	Jun	Jul	Aug	Sep	Oct	Nov	Dec	Jan
# Albumin	6	7	6	7	7	6	5	8	8	4	7	5
# Albumin >= 4.0	1	2	1	1	1	3	3	4	2	1	1	2
Pop. Mean	3.6	3.7	3.5	3.5	3.4	3.7	3.9	3.8	3.4	3.7	3.4	3.7
Std. Deviation	0.33	0.46	0.41	0.41	0.48	0.80	0.51	0.65	0.61	0.70	0.40	0.36
% Alb >= 4.0	17%	29%	17%	14%	14%	50%	60%	50%	25%	25%	14%	40%

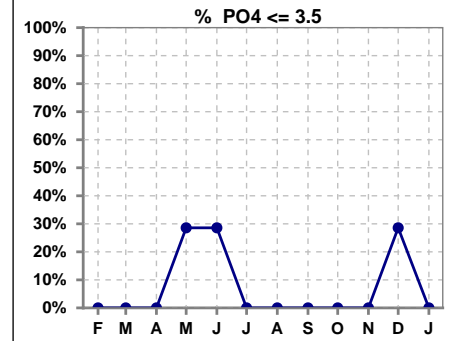


Methodology: a) All labs for 'Adequacy of Dialysis', 'Nutrition', 'Osteodystrophy', 'Anemia' and 'Diabetes' based on last value of month; b) BP's and #L processed are average of all values for month; c) Access data takes last access of month; d) Values for SGA and 'Infection Control' use most recent result.

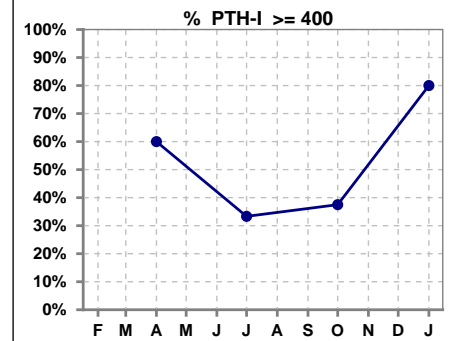
Lab methodology for PTH changed January 2012

### III. OSTEODYSTROPHY

	Feb	Mar	Apr	May	Jun	Jul	Aug	Sep	Oct	Nov	Dec	Jan
# PO4	6	7	6	7	7	6	5	8	8	4	7	5
# PO4 <= 3.5	0	0	0	2	2	0	0	0	0	0	2	0
Pop. Mean	5.8	5.9	5.4	4.8	5.6	5.6	5.9	5.2	6.0	6.0	5.2	5.2
Std. Deviation	1.47	1.12	1.03	1.78	2.30	1.25	1.01	0.75	2.16	2.35	2.07	0.58
% PO4 <= 3.5	0%	0%	0%	29%	29%	0%	0%	0%	0%	0%	29%	0%

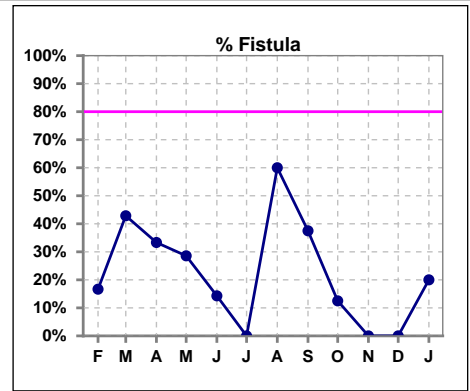


	Feb	Mar	Apr	May	Jun	Jul	Aug	Sep	Oct	Nov	Dec	Jan
# PTH-I			5			6			8			5
# PTH-I >= 400			3			2			3			4
Pop. Mean			601			273			338			600
Std. Deviation			509			166			149			241
% PTH-I >= 400			60%			33%			38%			80%

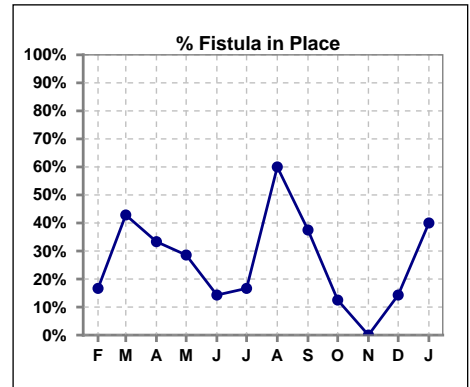


#### IV. ACCESS

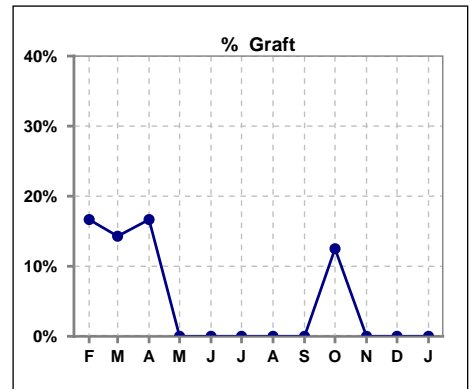
	Feb	Mar	Apr	May	Jun	Jul	Aug	Sep	Oct	Nov	Dec	Jan
# Access	6	7	6	7	7	6	5	8	8	4	7	5
# Fistula	1	3	2	2	1	0	3	3	1	0	0	1
% Fistula	17%	43%	33%	29%	14%	0%	60%	38%	13%	0%	0%	20%



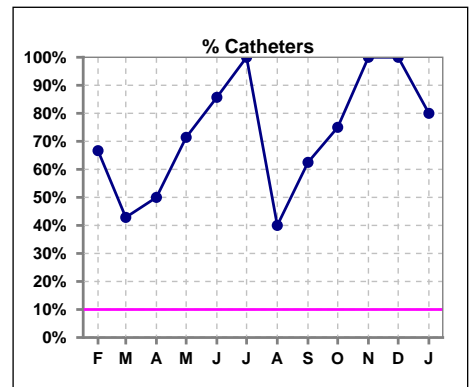
	Feb	Mar	Apr	May	Jun	Jul	Aug	Sep	Oct	Nov	Dec	Jan
# Patient	6	7	6	7	7	6	5	8	8	4	7	5
# Fistula in Place	1	3	2	2	1	1	3	3	1	0	1	2
% Fistula in Place	17%	43%	33%	29%	14%	17%	60%	38%	13%	0%	14%	40%



	Feb	Mar	Apr	May	Jun	Jul	Aug	Sep	Oct	Nov	Dec	Jan
# Access	6	7	6	7	7	6	5	8	8	4	7	5
# Graft	1	1	1	0	0	0	0	0	1	0	0	0
% Graft	17%	14%	17%	0%	0%	0%	0%	0%	13%	0%	0%	0%

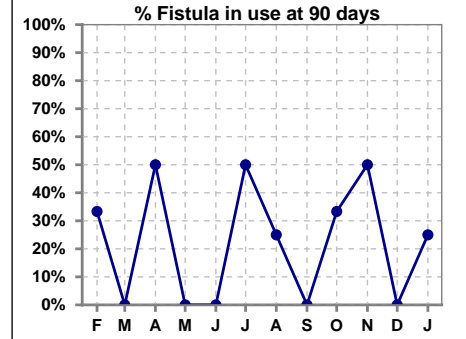


	Feb	Mar	Apr	May	Jun	Jul	Aug	Sep	Oct	Nov	Dec	Jan
# Access	6	7	6	7	7	6	5	8	8	4	7	5
# Catheters	4	3	3	5	6	6	2	5	6	4	7	4
% Catheters	67%	43%	50%	71%	86%	100%	40%	63%	75%	100%	100%	80%

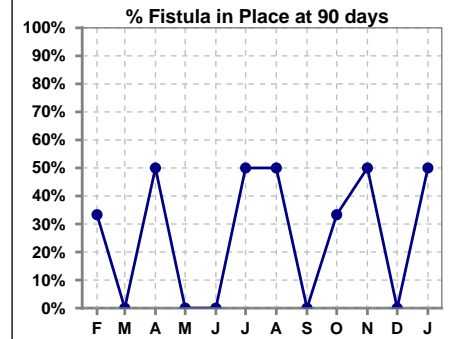


**IV. ACCESS - CONT. Access at 90 days for those patients that reached 90 days within the month.**

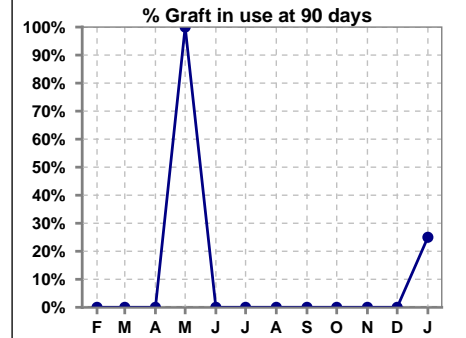
	Feb	Mar	Apr	May	Jun	Jul	Aug	Sep	Oct	Nov	Dec	Jan
# Patient	3	1	4	1	2	2	4	1	3	2	2	4
# Fistula in use	1	0	2	0	0	1	1	0	1	1	0	1
% Fistula in use	33%	0%	50%	0%	0%	50%	25%	0%	33%	50%	0%	25%



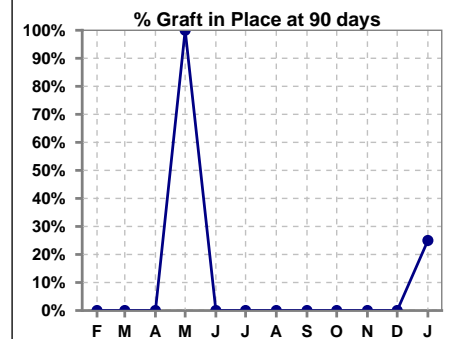
	Feb	Mar	Apr	May	Jun	Jul	Aug	Sep	Oct	Nov	Dec	Jan
# Patient	3	1	4	1	2	2	4	1	3	2	2	4
# Fistula in Place	1	0	2	0	0	1	2	0	1	1	0	2
% Fistula in Place	33%	0%	50%	0%	0%	50%	50%	0%	33%	50%	0%	50%



	Feb	Mar	Apr	May	Jun	Jul	Aug	Sep	Oct	Nov	Dec	Jan
# Patient	3	1	4	1	2	2	4	1	3	2	2	4
# Graft in use	0	0	0	1	0	0	0	0	0	0	0	1
% Graft in use	0%	0%	0%	100%	0%	0%	0%	0%	0%	0%	0%	25%

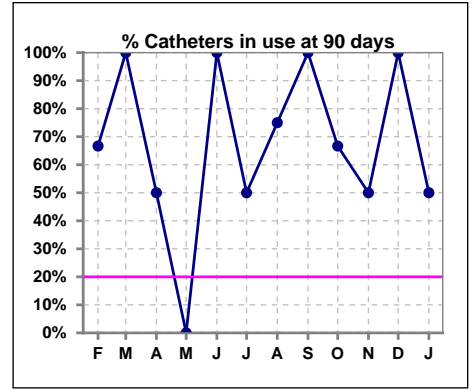


	Feb	Mar	Apr	May	Jun	Jul	Aug	Sep	Oct	Nov	Dec	Jan
# Patient	3	1	4	1	2	2	4	1	3	2	2	4
# Graft in Place	0	0	0	1	0	0	0	0	0	0	0	1
% Graft in Place	0%	0%	0%	100%	0%	0%	0%	0%	0%	0%	0%	25%

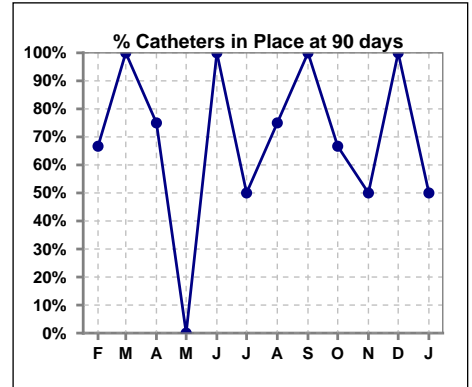


**IV. ACCESS - CONT. Access at 90 days for those patients that reached 90 days within the month.**

	Feb	Mar	Apr	May	Jun	Jul	Aug	Sep	Oct	Nov	Dec	Jan
# Patient	3	1	4	1	2	2	4	1	3	2	2	4
# Catheters in use	2	1	2	0	2	1	3	1	2	1	2	2
% Catheters in use	67%	100%	50%	0%	100%	50%	75%	100%	67%	50%	100%	50%

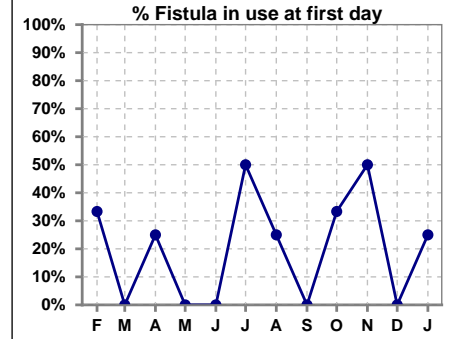


	Feb	Mar	Apr	May	Jun	Jul	Aug	Sep	Oct	Nov	Dec	Jan
# Patient	3	1	4	1	2	2	4	1	3	2	2	4
# Catheters in Place	2	1	3	0	2	1	3	1	2	1	2	2
% Catheters in Place	67%	100%	75%	0%	100%	50%	75%	100%	67%	50%	100%	50%

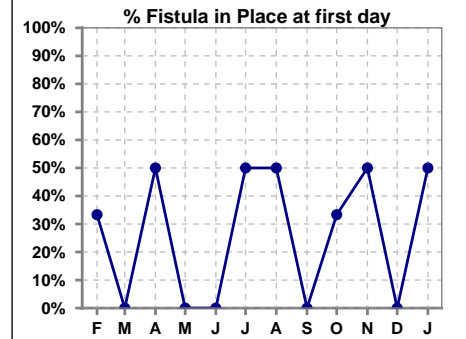


**IV. ACCESS - CONT. Access at first day for those patients that reached 90 days within the month.**

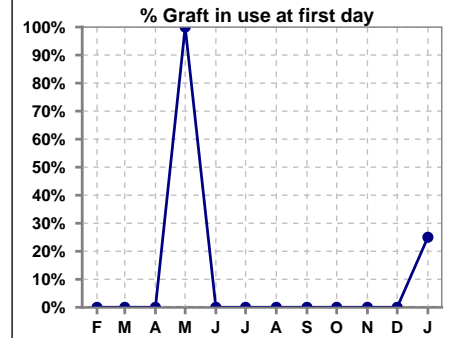
	Feb	Mar	Apr	May	Jun	Jul	Aug	Sep	Oct	Nov	Dec	Jan
# Patient	3	1	4	1	2	2	4	1	3	2	2	4
# Fistula in use	1	0	1	0	0	1	1	0	1	1	0	1
% Fistula in use	33%	0%	25%	0%	0%	50%	25%	0%	33%	50%	0%	25%



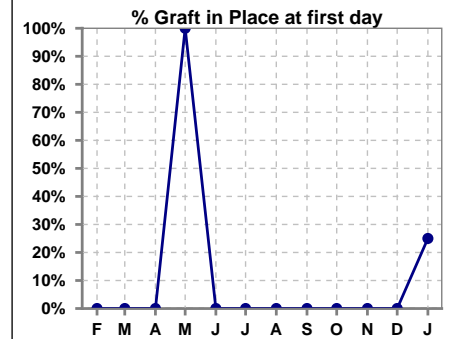
	Feb	Mar	Apr	May	Jun	Jul	Aug	Sep	Oct	Nov	Dec	Jan
# Patient	3	1	4	1	2	2	4	1	3	2	2	4
# Fistula in Place	1	0	2	0	0	1	2	0	1	1	0	2
% Fistula in Place	33%	0%	50%	0%	0%	50%	50%	0%	33%	50%	0%	50%



	Feb	Mar	Apr	May	Jun	Jul	Aug	Sep	Oct	Nov	Dec	Jan
# Patient	3	1	4	1	2	2	4	1	3	2	2	4
# Graft in use	0	0	0	1	0	0	0	0	0	0	0	1
% Graft in use	0%	0%	0%	100%	0%	0%	0%	0%	0%	0%	0%	25%

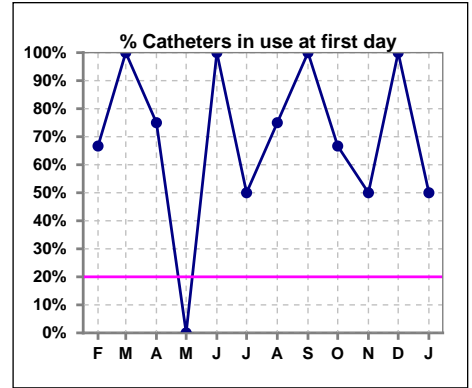


	Feb	Mar	Apr	May	Jun	Jul	Aug	Sep	Oct	Nov	Dec	Jan
# Patient	3	1	4	1	2	2	4	1	3	2	2	4
# Graft in Place	0	0	0	1	0	0	0	0	0	0	0	1
% Graft in Place	0%	0%	0%	100%	0%	0%	0%	0%	0%	0%	0%	25%

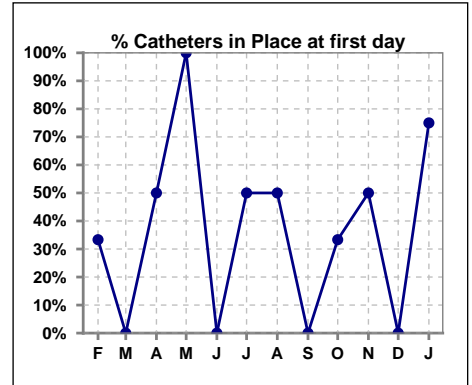


**IV. ACCESS - CONT. Access at first day for those patients that reached 90 days within the month.**

	Feb	Mar	Apr	May	Jun	Jul	Aug	Sep	Oct	Nov	Dec	Jan
# Patient	3	1	4	1	2	2	4	1	3	2	2	4
# Catheters in use	2	1	3	0	2	1	3	1	2	1	2	2
% Catheters in use	67%	100%	75%	0%	100%	50%	75%	100%	67%	50%	100%	50%



	Feb	Mar	Apr	May	Jun	Jul	Aug	Sep	Oct	Nov	Dec	Jan
# Patient	3	1	4	1	2	2	4	1	3	2	2	4
# Catheters in Place	1	0	2	1	0	1	2	0	1	1	0	3
% Catheters in Place	33%	0%	50%	100%	0%	50%	50%	0%	33%	50%	0%	75%

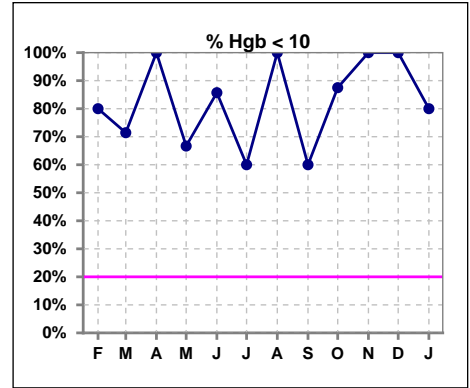




## V. ANEMIA

	Feb	Mar	Apr	May	Jun	Jul	Aug	Sep	Oct	Nov	Dec	Jan
# Hgb	5	7	5	6	7	5	4	5	8	3	5	5
# Hgb <= 10	4	5	5	4	6	3	4	3	7	3	5	4
Pop. Mean	9.2	9.5	8.8	9.3	9.2	9.0	8.9	9.2	8.9	9.4	8.3	8.9
Std. Deviation	1.3	1.2	0.8	0.9	0.8	1.6	0.7	1.6	1.3	0.5	0.4	1.0
% Hgb <= 10	80%	71%	100%	67%	86%	60%	100%	60%	88%	100%	100%	80%

Note: Excludes patients who received no ESA in month.



	Feb	Mar	Apr	May	Jun	Jul	Aug	Sep	Oct	Nov	Dec	Jan
# Hgb	5	7	5	6	7	5	4	5	8	3	5	5
# Hgb >= 12	0	0	0	0	0	0	0	0	0	0	0	0
Pop. Mean	9.2	9.5	8.8	9.3	9.2	9.0	8.9	9.2	8.9	9.4	8.3	8.9
Std. Deviation	1.3	1.2	0.8	0.9	0.8	1.6	0.7	1.6	1.3	0.5	0.4	1.0
% Hgb >= 12	0%	0%	0%	0%	0%	0%	0%	0%	0%	0%	0%	0%

Note: Excludes patients who received no ESA in month.

