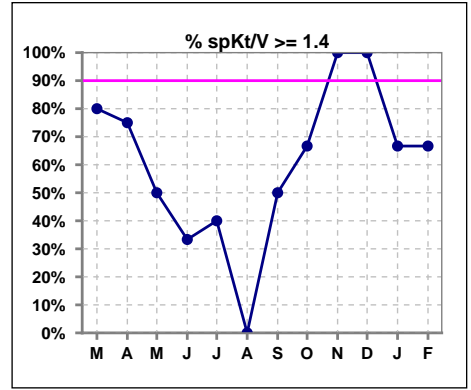
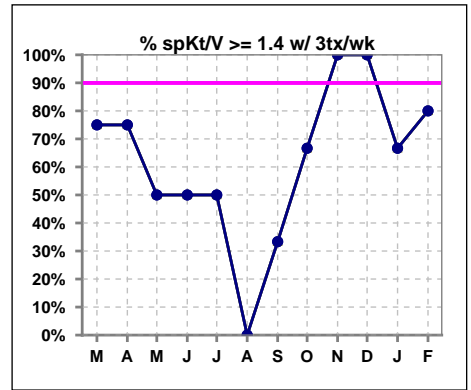


I. ADEQUACY OF DIALYSIS

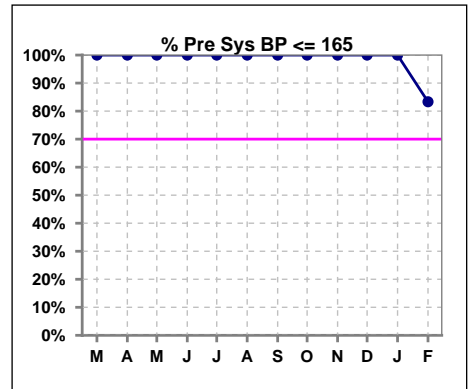
	Mar	Apr	May	Jun	Jul	Aug	Sep	Oct	Nov	Dec	Jan	Feb
# spKt/V	5	4	6	3	5	5	4	3	1	1	3	6
# spKt/V >= 1.4	4	3	3	1	2	0	2	2	1	1	2	4
Pop. Mean	1.60	1.46	1.51	1.20	1.34	1.15	1.46	1.58	1.61	1.52	1.37	1.49
Std. Deviation	0.25	0.44	0.47	0.39	0.17	0.11	0.13	0.22	0	0	0.07	0.28
% spKt/V >= 1.4	80%	75%	50%	33%	40%	0%	50%	67%	100%	100%	67%	67%
% spKt/V >= 1.2	100%	75%	67%	33%	80%	40%	100%	100%	100%	100%	100%	83%



	Mar	Apr	May	Jun	Jul	Aug	Sep	Oct	Nov	Dec	Jan	Feb
# spKt/V w/ 3tx/wk	4	4	6	2	4	3	3	3	1	1	3	5
# spKt/V >= 1.4 w/3tx/wk	3	3	3	1	2	0	1	2	1	1	2	4
Pop. Mean	1.64	1.46	1.51	1.35	1.36	1.10	1.48	1.58	1.61	1.52	1.37	1.55
Std. Deviation	0.27	0.44	0.47	0.42	0.19	0.13	0.16	0.22	0	0	0.07	0.25
% spKt/V >= 1.4 w/3tx/wk	75%	50%	50%	50%	50%	0%	33%	67%	100%	100%	67%	80%



	Mar	Apr	May	Jun	Jul	Aug	Sep	Oct	Nov	Dec	Jan	Feb
# Pre Sys BP	5	4	6	3	5	6	5	4	3	3	5	6
# Pre Sys BP <= 165	5	4	6	3	5	6	5	4	3	3	5	5
Pop. Mean	134	139	132	139	130	140	137	123	127	138	136	144
Std. Deviation	20.5	15.9	9.9	11.2	8.2	14.2	16.3	6.0	20.4	16.6	18.2	19.4
% Pre Sys BP <= 165	100%	100%	100%	100%	100%	100%	100%	100%	100%	100%	100%	83%

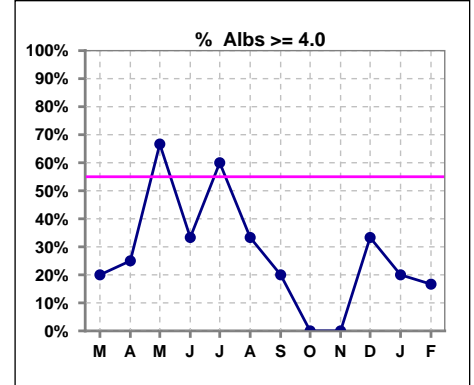


Methodology: a) All labs for 'Adequacy of Dialysis', 'Nutrition', 'Osteodystrophy', 'Anemia' and 'Diabetes' based on last value of month; b) BP's and #L processed are average of all values for month; c) Access data takes last access of month; d) Values for SGA and 'Infection Control' use most recent result.

*Albumin values use BCG method - as of July 2001

II. NUTRITION

	Mar	Apr	May	Jun	Jul	Aug	Sep	Oct	Nov	Dec	Jan	Feb
# Albumin	5	4	6	3	5	6	5	4	3	3	5	6
# Albumin >= 4.0	1	1	4	1	3	2	1	0	0	1	1	1
Pop. Mean	3.7	3.6	4.0	3.9	3.4	3.7	3.8	3.5	3.4	3.6	3.5	3.6
Std. Deviation	0.23	0.29	0.19	0.25	1.14	0.47	0.27	0.15	0.64	0.70	0.34	0.33
% Alb >= 4.0	20%	25%	67%	33%	60%	33%	20%	0%	0%	33%	20%	17%

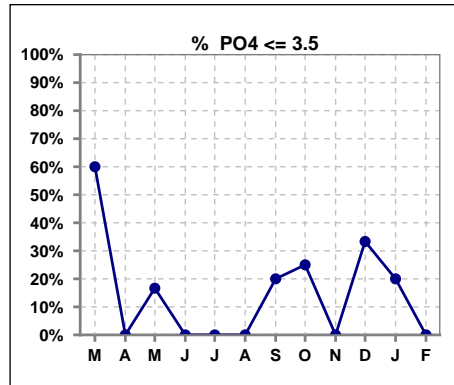


Methodology: a) All labs for 'Adequacy of Dialysis', 'Nutrition', 'Osteodystrophy', 'Anemia' and 'Diabetes' based on last value of month; b) BP's and #L processed are average of all values for month; c) Access data takes last access of month; d) Values for SGA and 'Infection Control' use most recent result.

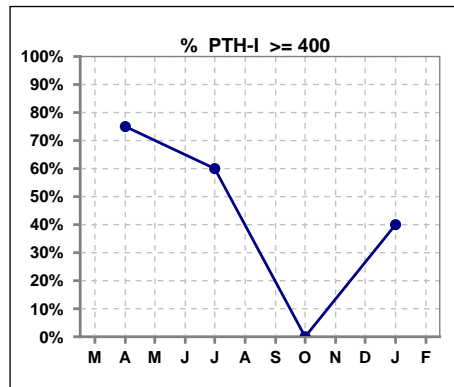
Lab methodology for PTH changed January 2012

III. OSTEODYSTROPHY

	Mar	Apr	May	Jun	Jul	Aug	Sep	Oct	Nov	Dec	Jan	Feb
# PO4	5	4	6	3	5	6	5	4	3	3	5	6
# PO4 <= 3.5	3	0	1	0	0	0	1	1	0	1	1	0
Pop. Mean	3.8	5.1	5.7	5.5	5.2	5.7	5.2	6.2	5.7	4.8	5.7	5.8
Std. Deviation	2.50	1.11	2.07	1.35	0.91	1.62	1.42	3.12	1.76	1.81	2.03	1.47
% PO4 <= 3.5	60%	0%	17%	0%	0%	0%	20%	25%	0%	33%	20%	0%



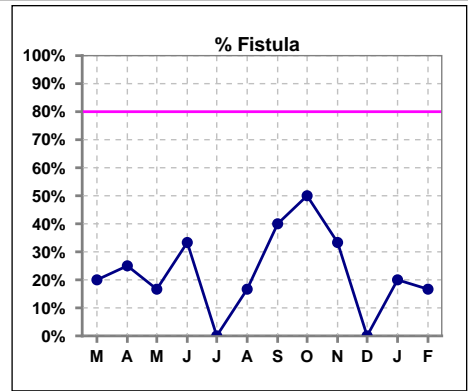
	Mar	Apr	May	Jun	Jul	Aug	Sep	Oct	Nov	Dec	Jan	Feb
# PTH-I		4			5			3			5	
# PTH-I >= 400		3			3			0			2	
Pop. Mean		471			691			313			463	
Std. Deviation		357			451			64			436	
% PTH-I >= 400		75%			60%			0%			40%	



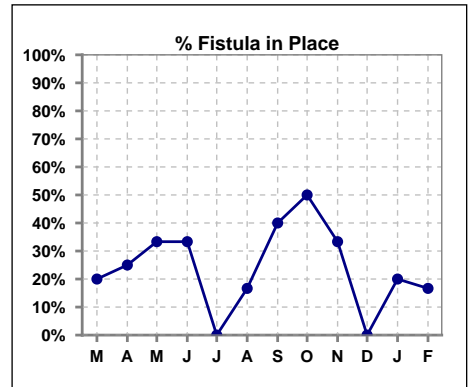
Methodology: a) All labs for 'Adequacy of Dialysis', 'Nutrition', 'Osteodystrophy', 'Anemia' and 'Diabetes' based on last value of month; b) BP's and #L processed are average of all values for month; c) Access data takes last access of month; d) Values for SGA and 'Infection Control' use most recent result.

IV. ACCESS

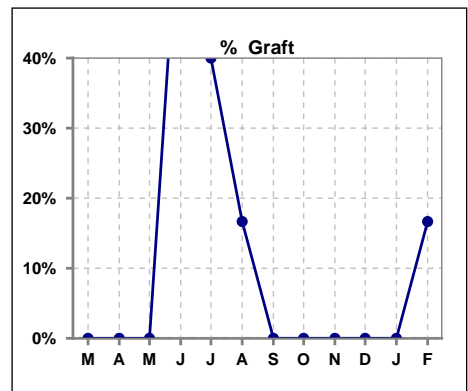
	Mar	Apr	May	Jun	Jul	Aug	Sep	Oct	Nov	Dec	Jan	Feb
# Access	5	4	6	3	5	6	5	4	3	3	5	6
# Fistula	1	1	1	1	0	1	2	2	1	0	1	1
% Fistula	20%	25%	17%	33%	0%	17%	40%	50%	33%	0%	20%	17%



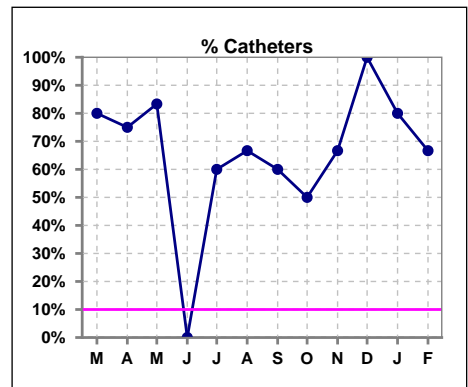
	Mar	Apr	May	Jun	Jul	Aug	Sep	Oct	Nov	Dec	Jan	Feb
# Patient	5	4	6	3	5	6	5	4	3	3	5	6
# Fistula in Place	1	1	2	1	0	1	2	2	1	0	1	1
% Fistula in Place	20%	25%	33%	33%	0%	17%	40%	50%	33%	0%	20%	17%



	Mar	Apr	May	Jun	Jul	Aug	Sep	Oct	Nov	Dec	Jan	Feb
# Access	5	4	6	3	5	6	5	4	3	3	5	6
# Graft	0	0	0	2	2	1	0	0	0	0	0	1
% Graft	0%	0%	0%	67%	40%	17%	0%	0%	0%	0%	0%	17%



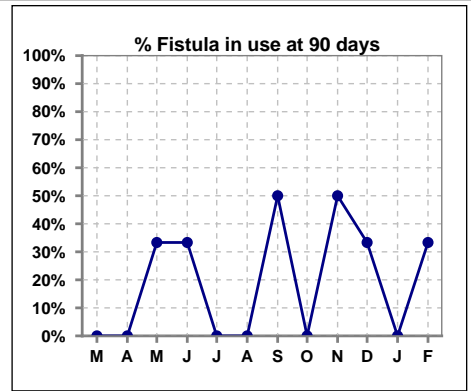
	Mar	Apr	May	Jun	Jul	Aug	Sep	Oct	Nov	Dec	Jan	Feb
# Access	5	4	6	3	5	6	5	4	3	3	5	6
# Catheters	4	3	5	0	3	4	3	2	2	3	4	4
% Catheters	80%	75%	83%	0%	60%	67%	60%	50%	67%	100%	80%	67%



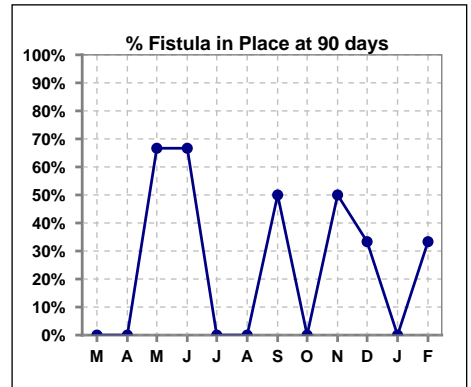
Methodology: a) All labs for 'Adequacy of Dialysis', 'Nutrition', 'Osteodystrophy', 'Anemia' and 'Diabetes' based on last value of month; b) BP's and #L processed are average of all values for month; c) Access data takes last access of month; d) Values for SGA and 'Infection Control' use most recent result.

IV. ACCESS - CONT. Access at 90 days for those patients that reached 90 days within the month.

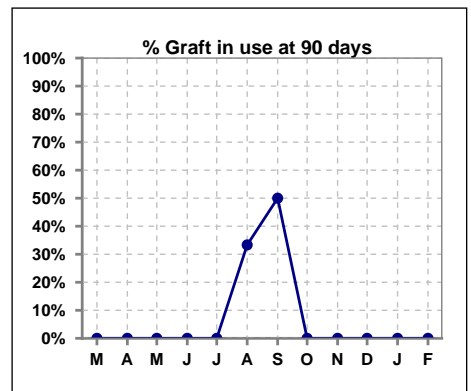
	Mar	Apr	May	Jun	Jul	Aug	Sep	Oct	Nov	Dec	Jan	Feb
# Patient	1	0	3	3	2	3	2	0	2	3	0	3
# Fistula in use	0	0	1	1	0	0	1	0	1	1	0	1
% Fistula in use	0%	0%	33%	33%	0%	0%	50%	0%	50%	33%	0%	33%



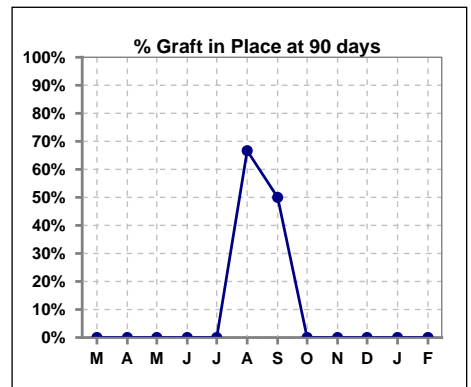
	Mar	Apr	May	Jun	Jul	Aug	Sep	Oct	Nov	Dec	Jan	Feb
# Patient	1	0	3	3	2	3	2	0	2	3	0	3
# Fistula in Place	0	0	2	2	0	0	1	0	1	1	0	1
% Fistula in Place	0%	0%	67%	67%	0%	0%	50%	0%	50%	33%	0%	33%



	Mar	Apr	May	Jun	Jul	Aug	Sep	Oct	Nov	Dec	Jan	Feb
# Patient	1	0	3	3	2	3	2	0	2	3	0	3
# Graft in use	0	0	0	0	0	1	1	0	0	0	0	0
% Graft in use	0%	0%	0%	0%	0%	33%	50%	0%	0%	0%	0%	0%



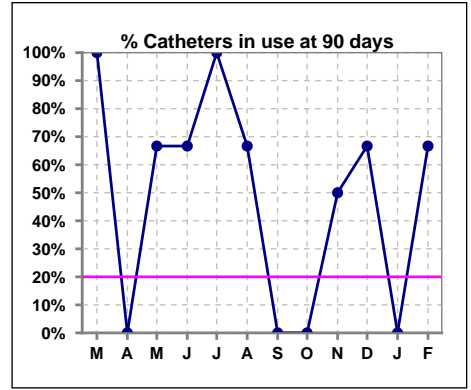
	Mar	Apr	May	Jun	Jul	Aug	Sep	Oct	Nov	Dec	Jan	Feb
# Patient	1	0	3	3	2	3	2	0	2	3	0	3
# Graft in Place	0	0	0	0	0	2	1	0	0	0	0	0
% Graft in Place	0%	0%	0%	0%	0%	67%	50%	0%	0%	0%	0%	0%



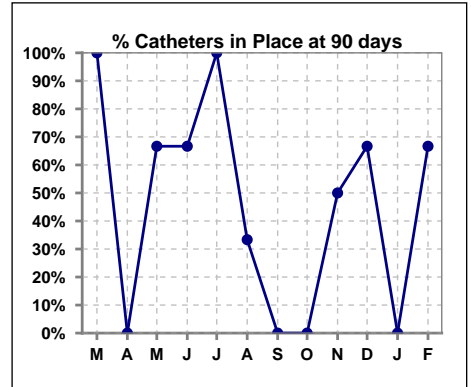
Methodology: a) All labs for 'Adequacy of Dialysis', 'Nutrition', 'Osteodystrophy', 'Anemia' and 'Diabetes' based on last value of month; b) BP's and #L processed are average of all values for month; c) Access data takes last access of month; d) Values for SGA and 'Infection Control' use most recent result.

IV. ACCESS - CONT. Access at 90 days for those patients that reached 90 days within the month.

	Mar	Apr	May	Jun	Jul	Aug	Sep	Oct	Nov	Dec	Jan	Feb
# Patient	1	0	3	3	2	3	2	0	2	3	0	3
# Catheters in use	1	0	2	2	2	2	0	0	1	2	0	2
% Catheters in use	100%	0%	67%	67%	100%	67%	0%	0%	50%	67%	0%	67%



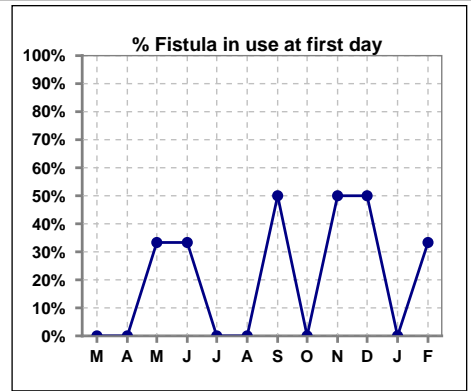
	Mar	Apr	May	Jun	Jul	Aug	Sep	Oct	Nov	Dec	Jan	Feb
# Patient	1	0	3	3	2	3	2	0	2	3	0	3
# Catheters in Place	1	0	2	2	2	1	0	0	1	2	0	2
% Catheters in Place	100%	0%	67%	67%	100%	33%	0%	0%	50%	67%	0%	67%



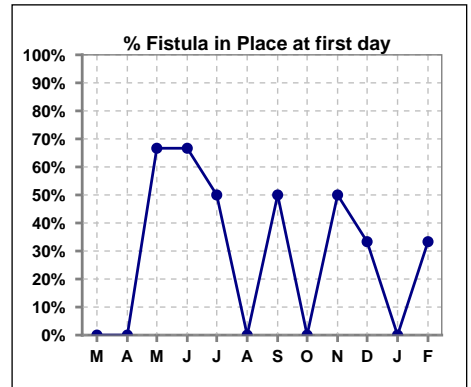
Methodology: a) All labs for 'Adequacy of Dialysis', 'Nutrition', 'Osteodystrophy', 'Anemia' and 'Diabetes' based on last value of month; b) BP's and #L processed are average of all values for month; c) Access data takes last access of month; d) Values for SGA and 'Infection Control' use most recent result.

IV. ACCESS - CONT. Access at first day for those patients that reached 90 days within the month.

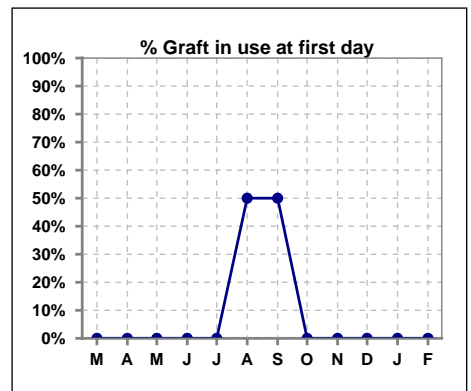
	Mar	Apr	May	Jun	Jul	Aug	Sep	Oct	Nov	Dec	Jan	Feb
# Patient	1	0	3	3	2	2	2	0	2	2	0	3
# Fistula in use	0	0	1	1	0	0	1	0	1	1	0	1
% Fistula in use	0%	0%	33%	33%	0%	0%	50%	0%	50%	50%	0%	33%



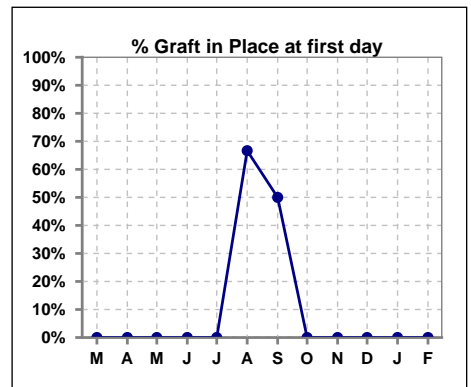
	Mar	Apr	May	Jun	Jul	Aug	Sep	Oct	Nov	Dec	Jan	Feb
# Patient	1	0	3	3	2	3	2	0	2	3	0	3
# Fistula in Place	0	0	2	2	1	0	1	0	1	1	0	1
% Fistula in Place	0%	0%	67%	67%	50%	0%	50%	0%	50%	33%	0%	33%



	Mar	Apr	May	Jun	Jul	Aug	Sep	Oct	Nov	Dec	Jan	Feb
# Patient	1	0	3	3	2	2	2	0	2	2	0	3
# Graft in use	0	0	0	0	0	1	1	0	0	0	0	0
% Graft in use	0%	0%	0%	0%	0%	50%	50%	0%	0%	0%	0%	0%



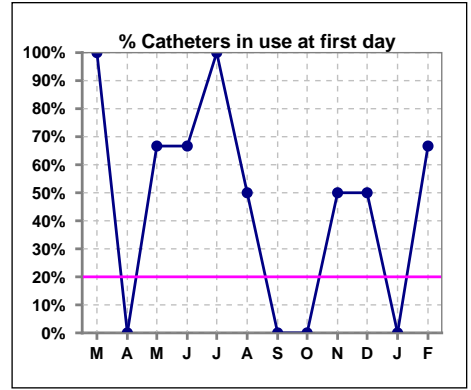
	Mar	Apr	May	Jun	Jul	Aug	Sep	Oct	Nov	Dec	Jan	Feb
# Patient	1	0	3	3	2	3	2	0	2	3	0	3
# Graft in Place	0	0	0	0	0	2	1	0	0	0	0	0
% Graft in Place	0%	0%	0%	0%	0%	67%	50%	0%	0%	0%	0%	0%



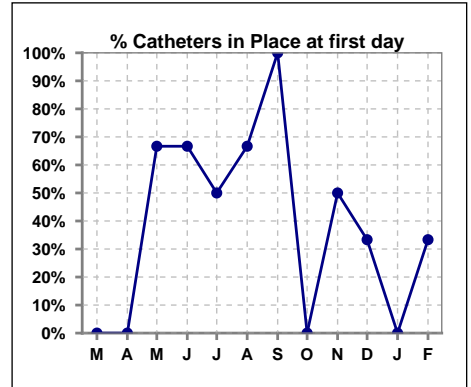
Methodology: a) All labs for 'Adequacy of Dialysis', 'Nutrition', 'Osteodystrophy', 'Anemia' and 'Diabetes' based on last value of month; b) BP's and #L processed are average of all values for month; c) Access data takes last access of month; d) Values for SGA and 'Infection Control' use most recent result.

IV. ACCESS - CONT. Access at first day for those patients that reached 90 days within the month.

	Mar	Apr	May	Jun	Jul	Aug	Sep	Oct	Nov	Dec	Jan	Feb
# Patient	1	0	3	3	2	2	2	0	2	2	0	3
# Catheters in use	1	0	2	2	2	1	0	0	1	1	0	2
% Catheters in use	100%	0%	67%	67%	100%	50%	0%	0%	50%	50%	0%	67%



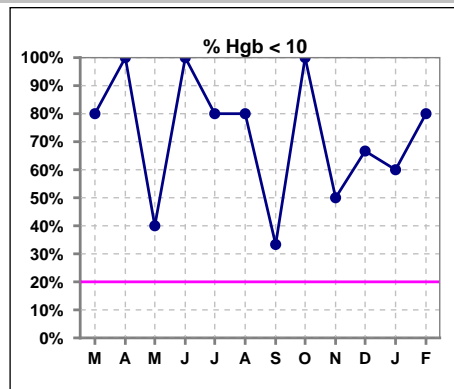
	Mar	Apr	May	Jun	Jul	Aug	Sep	Oct	Nov	Dec	Jan	Feb
# Patient	1	0	3	3	2	3	2	0	2	3	0	3
# Catheters in Place	0	0	2	2	1	2	2	0	1	1	0	1
% Catheters in Place	0%	0%	67%	67%	50%	67%	100%	0%	50%	33%	0%	33%



V. ANEMIA

	Mar	Apr	May	Jun	Jul	Aug	Sep	Oct	Nov	Dec	Jan	Feb
# Hgb	5	4	5	3	5	5	3	3	2	3	5	5
# Hgb <= 10	4	4	2	3	4	4	1	3	1	2	3	4
Pop. Mean	9.0	9.1	10.2	9.8	9.6	9.5	9.9	8.9	10.2	9.0	9.3	9.2
Std. Deviation	1.2	0.6	0.5	0.1	1.2	1.1	0.6	0.7	1.6	1.3	1.6	1.3
% Hgb <= 10	80%	100%	40%	100%	80%	80%	33%	100%	50%	67%	60%	80%

Note: Excludes patients who received no ESA in month.



	Mar	Apr	May	Jun	Jul	Aug	Sep	Oct	Nov	Dec	Jan	Feb
# Hgb	5	4	5	3	5	5	3	3	2	3	5	5
# Hgb >= 12	0	0	0	0	0	0	0	0	0	0	0	0
Pop. Mean	9.0	9.1	10.2	9.8	9.6	9.5	9.9	8.9	10.2	9.0	9.3	9.2
Std. Deviation	1.2	0.6	0.5	0.1	1.2	1.1	0.6	0.7	1.6	1.3	1.6	1.3
% Hgb >= 12	0%	0%	0%	0%	0%	0%	0%	0%	0%	0%	0%	0%

Note: Excludes patients who received no ESA in month.

