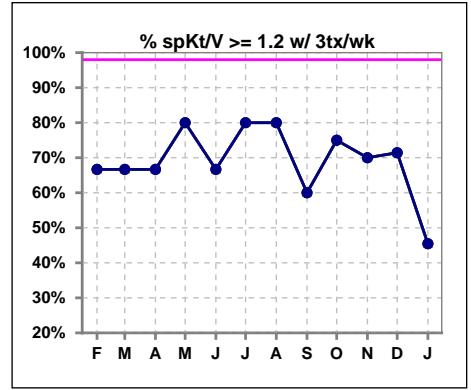
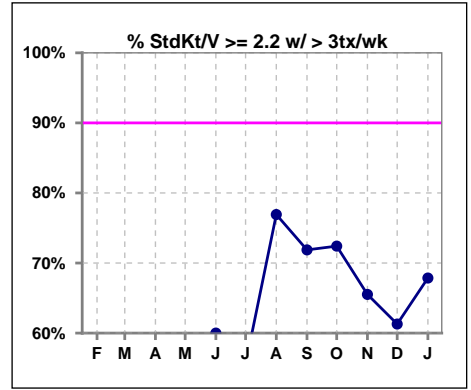


I. ADEQUACY OF DIALYSIS

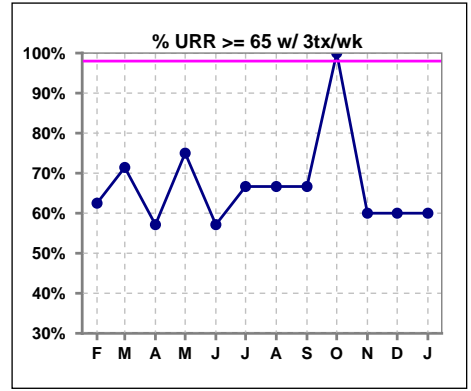
	Feb	Mar	Apr	May	Jun	Jul	Aug	Sep	Oct	Nov	Dec	Jan
# spKt/V w/3tx/wk	6	6	6	5	6	5	5	5	8	10	7	11
# spKt/V>=1.2 w/3tx/wk	4	4	4	4	4	4	4	3	6	7	5	5
Pop. Mean	1.22	1.21	1.44	1.22	1.26	1.25	1.56	1.19	1.48	1.26	1.29	1.15
Std. Deviation	0.34	0.39	0.68	0.38	0.34	0.41	0.72	0.43	0.45	0.22	0.27	0.30
% >=1.2 w/3tx/wk	67%	67%	67%	80%	67%	80%	80%	60%	75%	70%	71%	45%



	Feb	Mar	Apr	May	Jun	Jul	Aug	Sep	Oct	Nov	Dec	Jan
# StdKt/V w/>3tx/wk	32	31	34	31	30	27	26	32	29	29	31	28
# >= 2.2 w/>3tx/wk	18	16	18	17	18	15	20	23	21	19	19	19
Pop. Mean	2.13	2.05	2.21	2.17	2.24	2.23	2.28	2.25	2.32	2.15	2.20	2.35
Std. Deviation	0.45	0.52	0.53	0.55	0.59	0.47	0.40	0.56	0.56	0.57	0.52	0.47
% >= 2.2 w/>3tx/wk	56%	52%	53%	55%	60%	56%	77%	72%	72%	66%	61%	68%



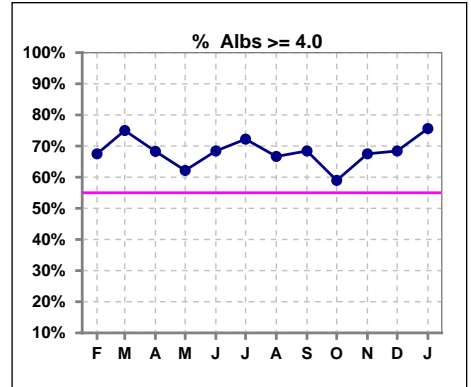
	Feb	Mar	Apr	May	Jun	Jul	Aug	Sep	Oct	Nov	Dec	Jan
# URR w/ 3tx/wk	8	7	7	8	7	6	6	3	4	5	5	5
# URR>=65 w/ 3tx/wk	5	5	4	6	4	4	4	2	4	3	3	3
Pop. Mean	65	65	67	63	62	62	68	59	75	63	64	60
Std. Deviation	10.35	12.51	14.32	13.19	13.24	15.37	15.45	20.89	7.29	12.71	9.50	17.14
% URR>=65 w/ 3tx/wk	63%	71%	57%	75%	57%	67%	67%	67%	100%	60%	60%	60%



*Albumin values use BCG method - as of July 2001

II. NUTRITION

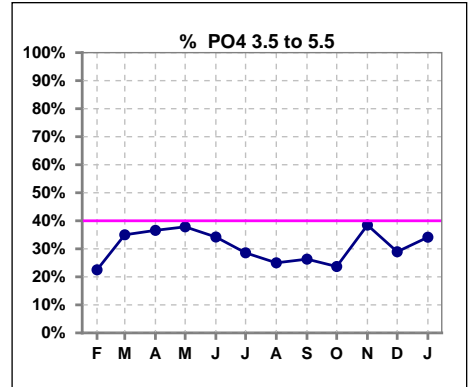
	Feb	Mar	Apr	May	Jun	Jul	Aug	Sep	Oct	Nov	Dec	Jan
# Albumin	40	40	41	37	38	36	36	38	39	40	38	41
# Albumin >= 4.0	27	30	28	23	26	26	24	26	23	27	26	31
Pop. Mean	4.1	4.1	4.1	4.0	4.0	4.0	4.0	4.0	3.9	4.1	4.1	4.1
Std. Deviation	0.38	0.37	0.42	0.49	0.48	0.45	0.46	0.53	0.52	0.43	0.33	0.33
% Alb >= 4.0	68%	75%	68%	62%	68%	72%	67%	68%	59%	68%	68%	76%



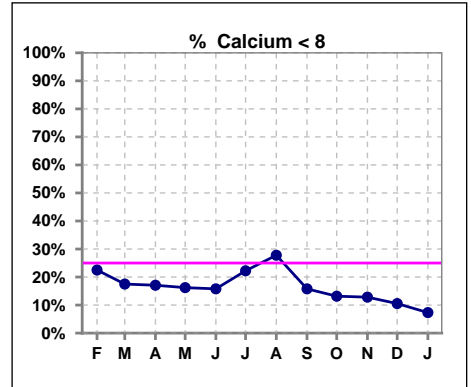
Lab methodology for PTH changed January 2012

III. OSTEODYSTROPHY

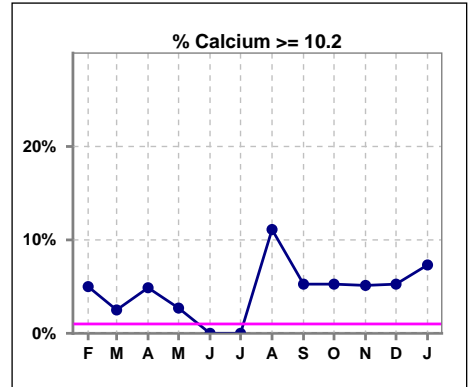
	Feb	Mar	Apr	May	Jun	Jul	Aug	Sep	Oct	Nov	Dec	Jan
# PO4	40	40	41	37	38	35	36	38	38	39	38	41
# PO4 3.5 to 5.5	9	14	15	14	13	10	9	10	9	15	11	14
Pop. Mean	6.4	6.3	6.4	6.0	6.2	6.1	6.3	5.9	6.2	6.1	6.7	6.3
Std. Deviation	2.07	2.26	1.78	2.07	2.48	2.14	2.05	2.00	1.91	1.89	2.17	1.82
% PO4 3.5 to 5.5	23%	35%	37%	38%	34%	29%	25%	26%	24%	38%	29%	34%



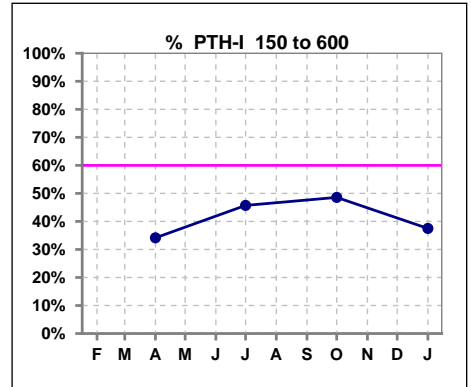
	Feb	Mar	Apr	May	Jun	Jul	Aug	Sep	Oct	Nov	Dec	Jan
# Calcium	40	40	41	37	38	36	36	38	38	39	38	41
# Calcium <= 8	9	7	7	6	6	8	10	6	5	5	4	3
Pop. Mean	8.8	8.9	8.8	8.6	8.6	8.6	8.6	8.8	8.9	8.9	9.0	9.1
Std. Deviation	0.93	0.84	0.94	1.06	0.86	0.82	1.18	0.87	0.87	0.95	0.81	0.80
% Calcium <= 8	23%	18%	17%	16%	16%	22%	28%	16%	13%	13%	11%	7%



	Feb	Mar	Apr	May	Jun	Jul	Aug	Sep	Oct	Nov	Dec	Jan
# Calcium	40	40	41	37	38	36	36	38	38	39	38	41
# Calcium > 10.2	2	1	2	1	0	0	4	2	2	2	2	3
Pop. Mean	8.8	8.9	8.8	8.6	8.6	8.6	8.6	8.8	8.9	8.9	9.0	9.1
Std. Deviation	0.93	0.84	0.94	1.06	0.86	0.82	1.18	0.87	0.87	0.95	0.81	0.80
% Calcium > 10.2	5%	3%	5%	3%	0%	0%	11%	5%	5%	5%	5%	7%



	Feb	Mar	Apr	May	Jun	Jul	Aug	Sep	Oct	Nov	Dec	Jan
# PTH-I			41			35			35			40
# PTH-I 150 to 600			14			16			17			15
Pop. Mean			710			507			563			539
Std. Deviation			832			449			504			436
% PTH-I 150 to 600			34%			46%			49%			38%

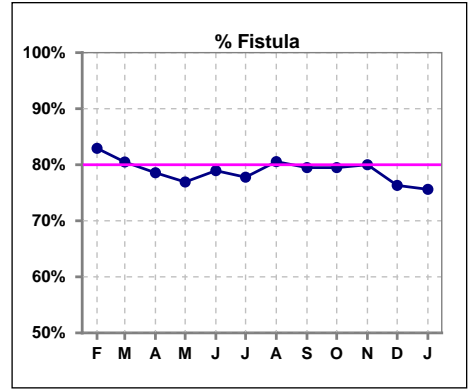


Methodology: a) All labs for 'Adequacy of Dialysis', 'Nutrition', 'Osteodystrophy' and 'Anemia' based on last value of month; b) Access data takes last access of month; c) Values for 'Infection Control' uses most recent result.

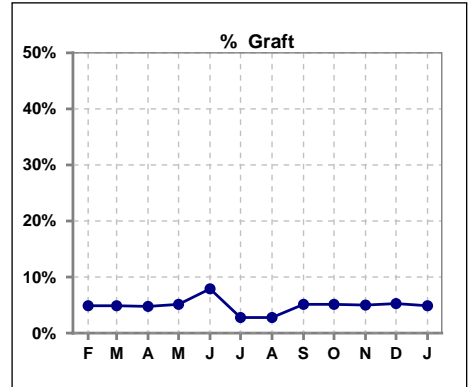
Northwest Kidney Centers - Home Hemodialysis
Quality Assurance Reports
 Through period ending Jan. 31, 2026

IV. ACCESS

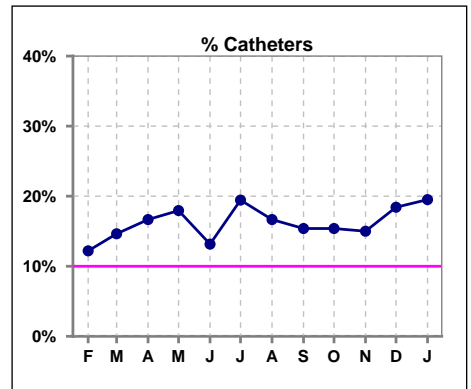
	Feb	Mar	Apr	May	Jun	Jul	Aug	Sep	Oct	Nov	Dec	Jan
# Access	41	41	42	39	38	36	36	39	39	40	38	41
# Fistula	34	33	33	30	30	28	29	31	31	32	29	31
% Fistula	83%	80%	79%	77%	79%	78%	81%	79%	79%	80%	76%	76%



	Feb	Mar	Apr	May	Jun	Jul	Aug	Sep	Oct	Nov	Dec	Jan
# Access	41	41	42	39	38	36	36	39	39	40	38	41
# Graft	2	2	2	2	3	1	1	2	2	2	2	2
% Graft	5%	5%	5%	5%	8%	3%	3%	5%	5%	5%	5%	5%



	Feb	Mar	Apr	May	Jun	Jul	Aug	Sep	Oct	Nov	Dec	Jan
# Access	41	41	42	39	38	36	36	39	39	40	38	41
# Catheters	5	6	7	7	5	7	6	6	6	6	7	8
% Catheters	12%	15%	17%	18%	13%	19%	17%	15%	15%	15%	18%	20%



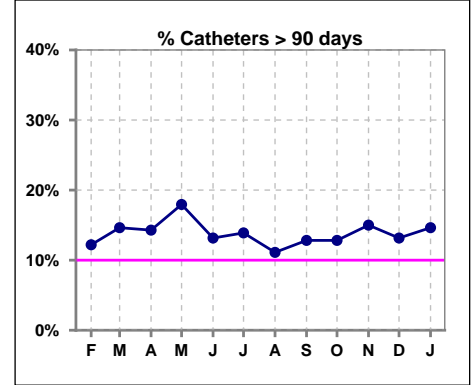
Methodology: a) All labs for 'Adequacy of Dialysis', 'Nutrition', 'Osteodystrophy' and 'Anemia' based on last value of month; b) Access data takes last access of month; c) Values for 'Infection Control' uses most recent result.

IV. ACCESS - CONT.

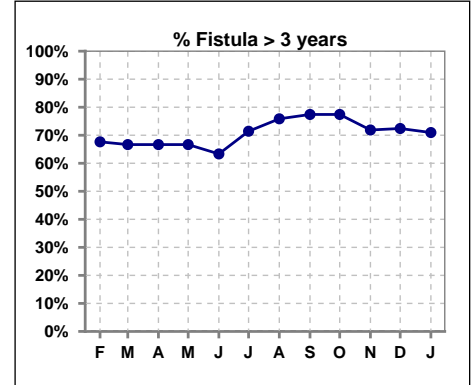
Catheters > 90 days

	Feb	Mar	Apr	May	Jun	Jul	Aug	Sep	Oct	Nov	Dec	Jan
# Access	41	41	42	39	38	36	36	39	39	40	38	41
# Catheters	5	6	6	7	5	5	4	5	5	6	5	6
% Catheters	12%	15%	14%	18%	13%	14%	11%	13%	13%	15%	13%	15%

Definition: Catheter in use on last treatment of the month

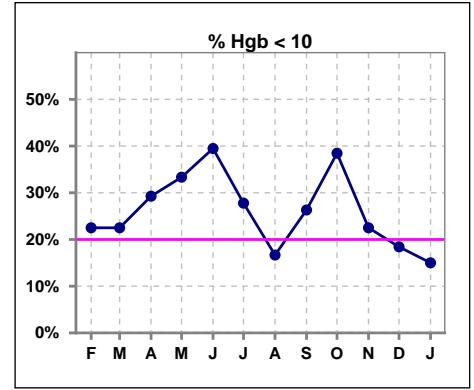


	Feb	Mar	Apr	May	Jun	Jul	Aug	Sep	Oct	Nov	Dec	Jan
# Fistula	34	33	33	30	30	28	29	31	31	32	29	31
# Fistula > 3 yrs	23	22	22	20	19	20	22	24	24	23	21	22
% Fistula > 3 yrs	68%	67%	67%	67%	63%	71%	76%	77%	77%	72%	72%	71%

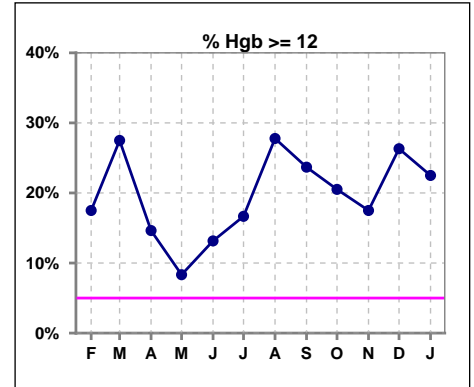


V. ANEMIA

	Feb	Mar	Apr	May	Jun	Jul	Aug	Sep	Oct	Nov	Dec	Jan
# Hgb	40	40	41	36	38	36	36	38	39	40	38	40
# Hgb < 10	9	9	12	12	15	10	6	10	15	9	7	6
Pop. Mean	10.7	11.0	10.7	10.5	10.3	10.8	11.2	11.2	10.8	11.0	11.0	11.0
Std. Deviation	1.4	1.6	1.3	1.4	1.7	1.6	1.4	1.9	1.8	1.7	1.7	1.7
% Hgb < 10	23%	23%	29%	33%	39%	28%	17%	26%	38%	23%	18%	15%



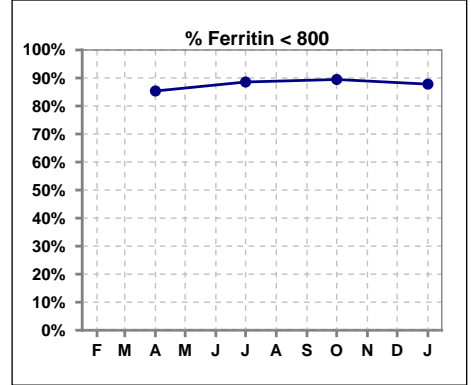
	Feb	Mar	Apr	May	Jun	Jul	Aug	Sep	Oct	Nov	Dec	Jan
# Hgb	40	40	41	36	38	36	36	38	39	40	38	40
# Hgb >= 12	7	11	6	3	5	6	10	9	8	7	10	9
Pop. Mean	10.7	11.0	10.7	10.5	10.3	10.8	11.2	11.2	10.8	11.0	11.0	11.0
Std. Deviation	1.4	1.6	1.3	1.4	1.7	1.6	1.4	1.9	1.8	1.7	1.7	1.7
% Hgb >= 12	18%	28%	15%	8%	13%	17%	28%	24%	21%	18%	26%	23%



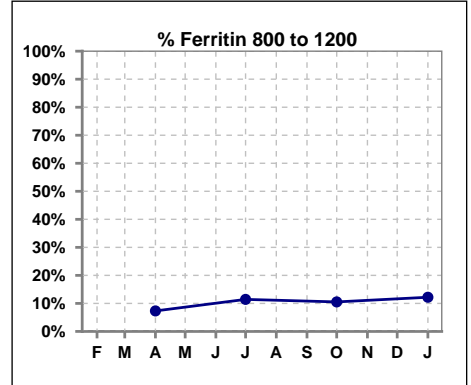
V. ANEMIA - CONT.

Iron Profile

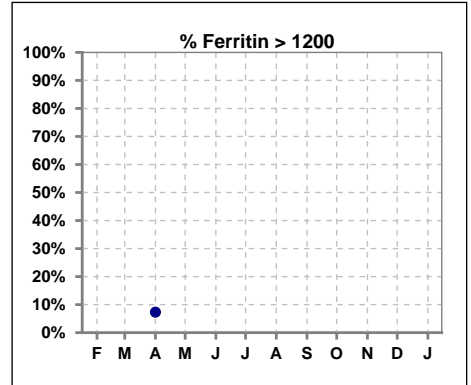
	Feb	Mar	Apr	May	Jun	Jul	Aug	Sep	Oct	Nov	Dec	Jan
# Ferritin			41			35			38			41
# Ferritin < 800			35			31			34			36
Pop. Mean			562			398			410			419
Std. Deviation			893			275			308			285
% Ferritin < 800			85%			89%			89%			88%



	Feb	Mar	Apr	May	Jun	Jul	Aug	Sep	Oct	Nov	Dec	Jan
# Ferritin			41			35			38			41
# Ferritin 800 to 1200			3			4			4			5
Pop. Mean			562			398			410			419
Std. Deviation			893			275			308			285
% Ferritin 800 to 1200			7%			11%			11%			12%

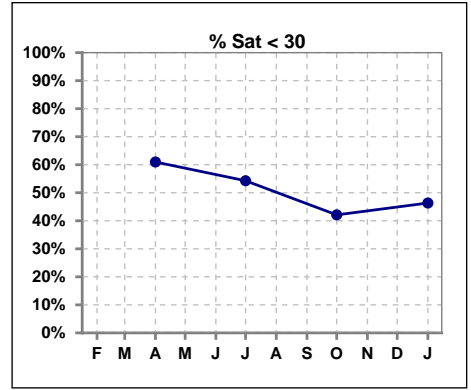


	Feb	Mar	Apr	May	Jun	Jul	Aug	Sep	Oct	Nov	Dec	Jan
# Ferritin			41			35			38			41
# Ferritin > 1200			3									
Pop. Mean			562			398			410			419
Std. Deviation			893			275			308			285
% Ferritin > 1200			7%									

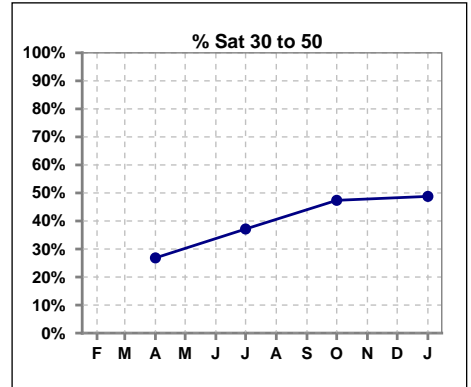


V. ANEMIA - CONT.

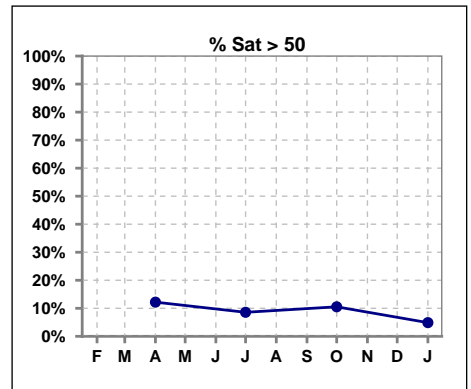
	Feb	Mar	Apr	May	Jun	Jul	Aug	Sep	Oct	Nov	Dec	Jan
# % Sat			41			35			38			41
# % Sat < 30			25			19			16			19
Pop. Mean			31			31			32			32
Std. Deviation			16			19			13			16
% % Sat < 30			61%			54%			42%			46%



	Feb	Mar	Apr	May	Jun	Jul	Aug	Sep	Oct	Nov	Dec	Jan
# % Sat			41			35			38			41
# % Sat 30 to 50			11			13			18			20
Pop. Mean			31			31			32			32
Std. Deviation			16			19			13			16
% % Sat 30 to 50			27%			37%			47%			49%

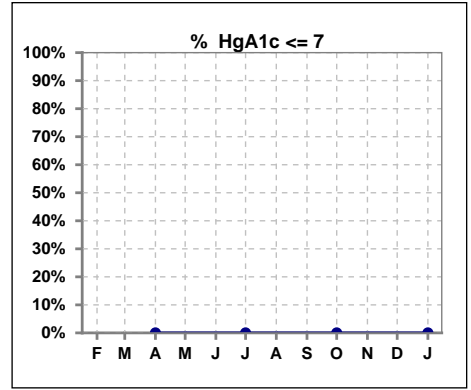


	Feb	Mar	Apr	May	Jun	Jul	Aug	Sep	Oct	Nov	Dec	Jan
# % Sat			41			35			38			41
# % Sat > 50			5			3			4			2
Pop. Mean			31			31			32			32
Std. Deviation			16			19			13			16
% % Sat > 50			12%			9%			11%			5%



VI. Diabetes

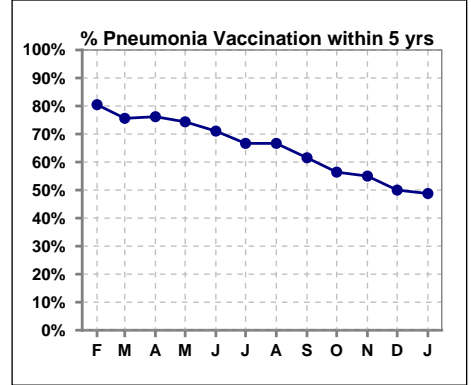
	Feb	Mar	Apr	May	Jun	Jul	Aug	Sep	Oct	Nov	Dec	Jan
# HgA1c			0			0			0			0
# HgA1c <= 7			0			0			0			0
Pop. Mean			0			0			0			0
Std. Deviation			0			0			0			0
% HgA1c <= 7			0%			0%			0%			0%



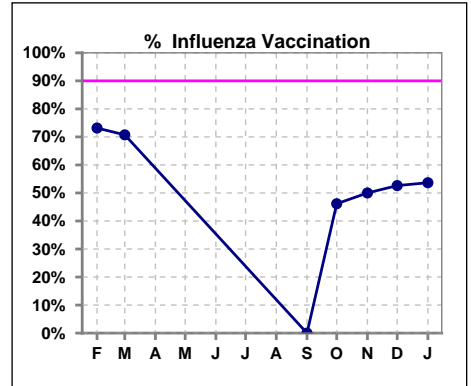
VII. Infection Control

Pneumonia vaccination within the past five years

	Feb	Mar	Apr	May	Jun	Jul	Aug	Sep	Oct	Nov	Dec	Jan
# Patient	41	41	42	39	38	36	36	39	39	40	38	41
# Pneumonia	33	31	32	29	27	24	24	24	22	22	19	20
% Pneumonia	80%	76%	76%	74%	71%	67%	67%	62%	56%	55%	50%	49%



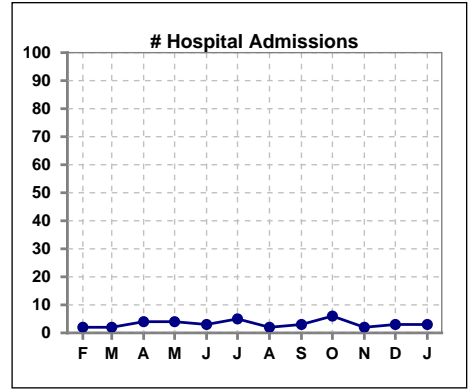
	Feb	Mar	Apr	May	Jun	Jul	Aug	Sep	Oct	Nov	Dec	Jan
# Patient	41	41						39	39	40	38	41
# Influenza	30	29						0	18	20	20	22
% Influenza	73%	71%						0%	46%	50%	53%	54%



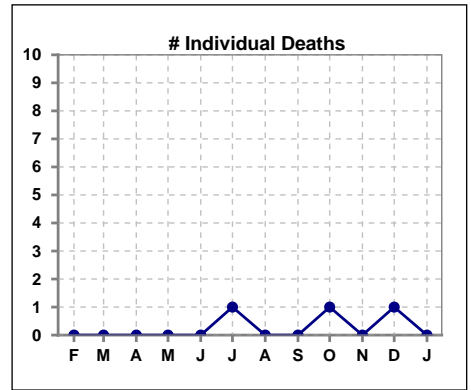
Methodology: a) All labs for 'Adequacy of Dialysis', 'Nutrition', 'Osteodystrophy' and 'Anemia' based on last value of month; b) Access data takes last access of month; c) Values for 'Infection Control' uses most recent result.

VIII. Outcome measures

	Feb	Mar	Apr	May	Jun	Jul	Aug	Sep	Oct	Nov	Dec	Jan
# Patient	41	41	42	39	38	36	36	39	39	40	38	41
# Hospital Admissions	2	2	4	4	3	5	2	3	6	2	3	3



	Feb	Mar	Apr	May	Jun	Jul	Aug	Sep	Oct	Nov	Dec	Jan
# Patient	41	41	42	39	38	36	36	39	39	40	38	41
# Individual Deaths	0	0	0	0	0	1	0	0	1	0	1	0



	Feb	Mar	Apr	May	Jun	Jul	Aug	Sep	Oct	Nov	Dec	Jan
# Patient	41	41	42	39	38	36	36	39	39	40	38	41
# Transplants	0	0	0	0	0	0	0	1	1	0	0	0

