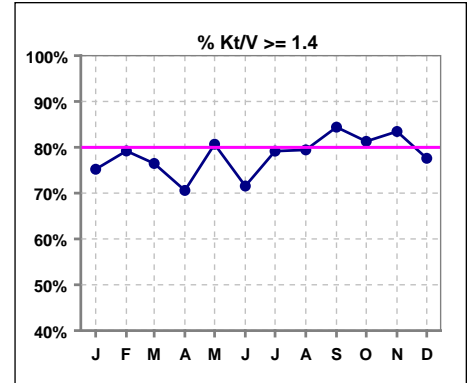


I. ADEQUACY OF DIALYSIS

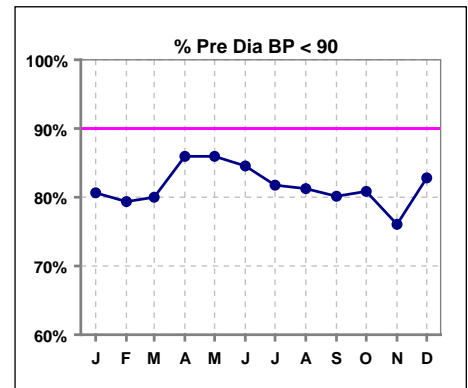
	Jan	Feb	Mar	Apr	May	Jun	Jul	Aug	Sep	Oct	Nov	Dec
# Kt/V	121	125	119	119	119	123	144	141	141	139	139	125
# Kt/V >= 1.4	91	99	91	84	96	88	114	112	119	113	116	97
Pop. Mean =	1.59	1.62	1.60	1.51	1.62	1.54	1.62	1.61	1.63	1.64	1.63	1.60
Std. Deviation =	0.28	0.28	0.25	0.29	0.30	0.27	0.35	0.39	0.30	0.29	0.36	0.28
Network Mean =	1.59	1.59	1.59	1.59	1.59	1.59	1.59	1.59	1.59	1.59	1.59	1.59
Natl. Mean =												
% Kt/V >= 1.4	75%	79%	76%	71%	81%	72%	79%	79%	84%	81%	83%	78%
**% Kt/V >= 1.2	93%	94%	96%	84%	92%	89%	93%	89%	94%	93%	96%	91%

** As of Apr. '04

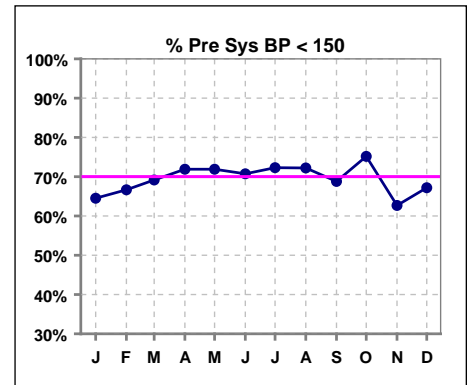


Blood Pressure Control (Pre)

	Jan	Feb	Mar	Apr	May	Jun	Jul	Aug	Sep	Oct	Nov	Dec
# Pre Dia BP	124	126	120	121	121	123	148	144	141	141	142	128
# Pre Dia BP < 90	100	100	96	104	104	104	121	117	113	114	108	106
Pop. Mean =	80	79	79	79	79	78	80	79	79	79	85	78
Std. Deviation =	12.0	12.1	11.8	11.9	12.4	12.0	20.4	15.7	13.4	13.0	58.2	12.3
Network Mean =												
Natl. Mean =												
% Pre Dia BP < 90	81%	79%	80%	86%	86%	85%	82%	81%	80%	81%	76%	83%



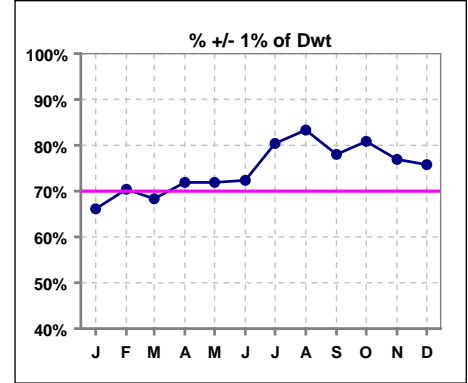
	Jan	Feb	Mar	Apr	May	Jun	Jul	Aug	Sep	Oct	Nov	Dec
# Pre Sys BP	124	126	120	121	121	123	148	144	141	141	142	128
# Pre Sys BP < 150	80	84	83	87	87	87	107	104	97	106	89	86
Pop. Mean =	142	142	141	140	140	140	140	142	142	141	143	142
Std. Deviation =	16.9	18.6	17.9	17.3	16.4	19.2	19.4	19.2	20.2	20.3	19.3	19.2
Network Mean =												
Natl. Mean =												
% Pre Sys BP < 150	65%	67%	69%	72%	72%	71%	72%	72%	69%	75%	63%	67%



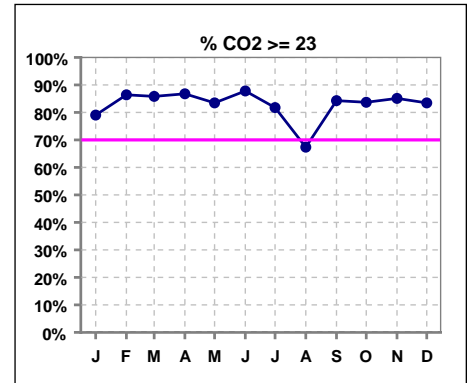
*Methodology: a) Monthly values based on patient's monthly average of all values present for the month; b) Quarter values are average of all values for quarter; c) Values not averaged use last value present at months end.

I. ADEQUACY OF DIALYSIS - CONT.

	Jan	Feb	Mar	Apr	May	Jun	Jul	Aug	Sep	Oct	Nov	Dec
# Post/Dwt	124	125	120	121	121	123	148	144	141	141	143	128
# +/- 1% of Dwt	82	88	82	87	87	89	119	120	110	114	110	97
% +/- 1% of Dwt	66%	70%	68%	72%	72%	72%	80%	83%	78%	81%	77%	76%



	Jan	Feb	Mar	Apr	May	Jun	Jul	Aug	Sep	Oct	Nov	Dec
# CO2	124	125	120	121	121	123	148	144	140	141	141	127
# CO2 >= 23	98	108	103	105	101	108	121	97	118	118	120	106
Pop. Mean =	25	25	26	26	26	26	25	24	25	25	26	25
Std. Deviation =	3.36	4.13	3.21	3.06	3.21	2.99	3.50	3.30	2.81	2.95	3.07	3.10
Network Mean =												
Natl. Mean =												
% CO2 >= 23	79%	86%	86%	87%	83%	88%	82%	67%	84%	84%	85%	83%



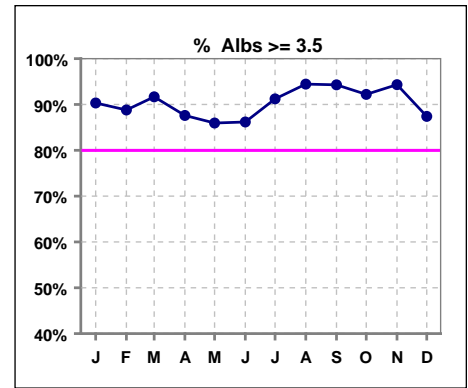
*Methodology: a) Monthly values based on patient's monthly average of all values present for the month; b) Quarter values are average of all values for quarter; c) Values not averaged use last value present at months end.

*Albumin values use BCG method - as of July 2001

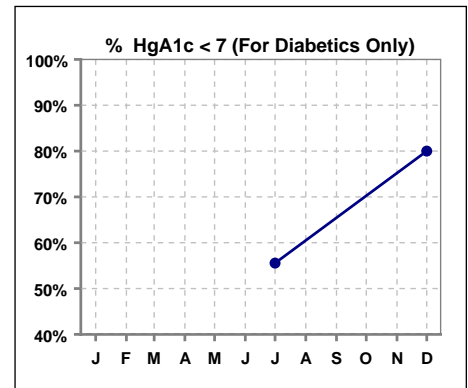
II. NUTRITION

	Jan	Feb	Mar	Apr	May	Jun	Jul	Aug	Sep	Oct	Nov	Dec
# Albumin	124	125	120	121	121	123	148	144	140	141	141	127
# Albumin >= 3.5	112	111	110	106	104	106	135	136	132	130	133	111
Pop. Mean =	3.9	3.9	3.9	3.8	3.8	3.8	3.9	3.9	4.0	4.0	4.0	3.9
Std. Deviation =	0.33	0.34	0.32	0.33	0.33	0.33	0.40	0.32	0.37	0.37	0.31	0.38
Network Mean =	3.4	3.4	3.4	3.4	3.4	3.4	3.4	3.4	3.4	3.4	3.4	3.4
Natl. Mean =	3.8	3.8	3.8	3.8	3.8	3.8	3.8	3.8	3.8	3.8	3.8	3.8
% Alb >= 3.5	90%	89%	92%	88%	86%	86%	91%	94%	94%	92%	94%	87%
% Alb >= 4.0	40%	42%	35%	31%	34%	28%	55%	50%	60%	57%	57%	50%
*Natl % >= 3.5-BCG	81%	81%	81%	81%	81%	81%	81%	81%	81%	81%	81%	81%
*Natl. % >= 4.0-BCG	39%	39%	39%	39%	39%	39%	39%	39%	39%	39%	39%	39%

*Figures for 2004



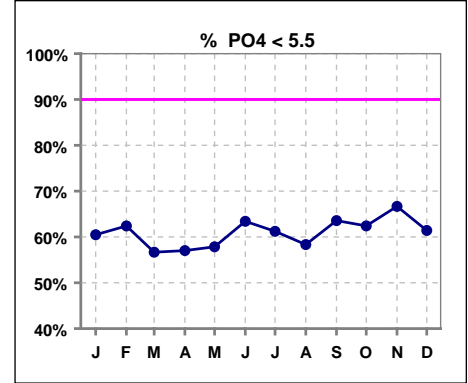
	Jan	Feb	Mar	Apr	May	Jun	Jul	Aug	Sep	Oct	Nov	Dec
# HgA1c							54		1			5
# HgA1c < 7							30					4
Pop. Mean =							7.0		7.1			6.3
Std. Deviation =							1.64					1.17
Network Mean =												
Natl. Mean =												
% HgA1c < 7							56%					80%



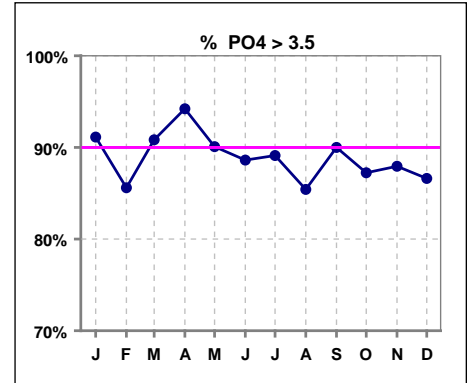
*Methodology: a) Monthly values based on patient's monthly average of all values present for the month; b) Quarter values are average of all values for quarter; c) Values not averaged use last value present at months end.

III. OSTEODYSTROPHY

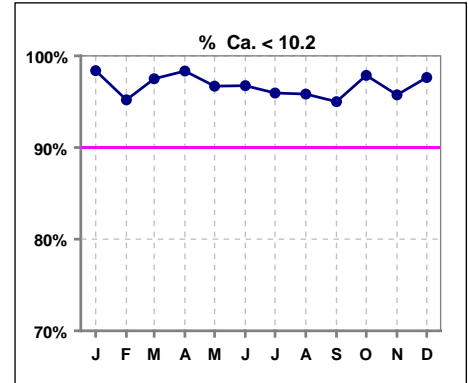
	Jan	Feb	Mar	Apr	May	Jun	Jul	Aug	Sep	Oct	Nov	Dec
# PO4	124	125	120	121	121	123	147	144	140	141	141	127
# PO4 < 5.5	75	78	68	69	70	78	90	84	89	88	94	78
Pop. Mean =	5.2	5.2	5.3	5.3	5.3	5.1	5.2	5.2	5.1	5.1	5.0	5.1
Std. Deviation =	1.38	1.54	1.39	1.33	1.29	1.23	1.52	1.43	1.47	1.27	1.28	1.32
Network Mean =												
Natl. Mean =												
% PO4 < 5.5	60%	62%	57%	57%	58%	63%	61%	58%	64%	62%	67%	61%



	Jan	Feb	Mar	Apr	May	Jun	Jul	Aug	Sep	Oct	Nov	Dec
# PO4	124	125	120	121	121	123	147	144	140	141	141	127
# PO4 > 3.5	113	107	109	114	109	109	131	123	126	123	124	110
Pop. Mean =	5.2	5.2	5.3	5.3	5.3	5.1	5.2	5.2	5.1	5.1	5.0	5.1
Std. Deviation =	1.38	1.54	1.39	1.33	1.29	1.23	1.52	1.43	1.47	1.27	1.28	1.32
Network Mean =												
Natl. Mean =												
% PO4 > 3.5	91%	86%	91%	94%	90%	89%	89%	85%	90%	87%	88%	87%



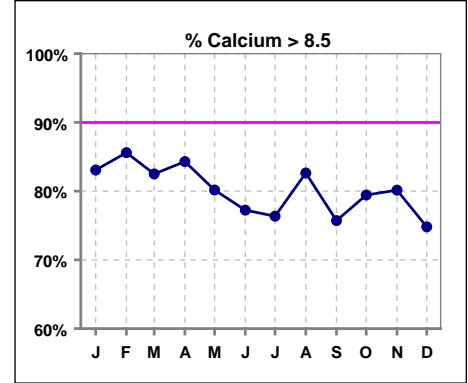
	Jan	Feb	Mar	Apr	May	Jun	Jul	Aug	Sep	Oct	Nov	Dec
# Calcium	124	125	120	121	121	123	148	144	140	141	141	127
# Calcium < 10.2	122	119	117	119	117	119	142	138	133	138	135	124
Pop. Mean =	9.1	9.2	9.1	9.1	9.0	9.0	9.0	9.1	9.1	9.1	9.1	8.9
Std. Deviation =	0.62	0.67	0.61	0.63	0.62	0.62	0.64	0.61	0.65	0.60	0.65	0.65
Network Mean =												
Natl. Mean =												
% Ca < 10.2	98%	95%	98%	98%	97%	97%	96%	96%	95%	98%	96%	98%



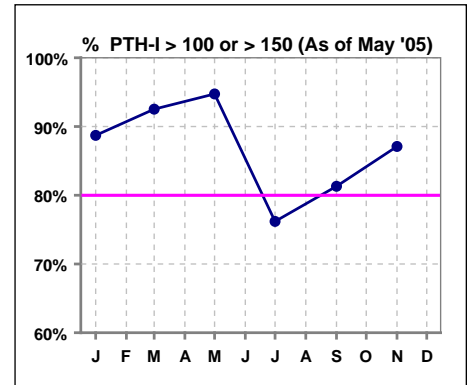
*Methodology: a) Monthly values based on patient's monthly average of all values present for the month; b) Quarter values are average of all values for quarter; c) Values not averaged use last value present at months end.

III. OSTEODYSTROPHY - CONT.

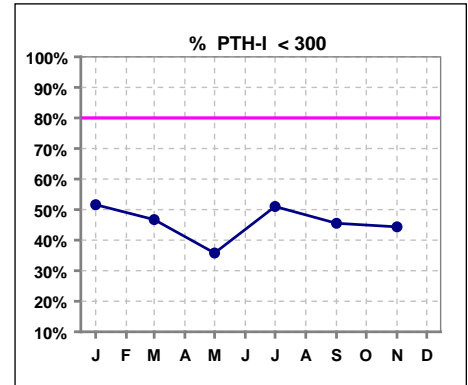
	Jan	Feb	Mar	Apr	May	Jun	Jul	Aug	Sep	Oct	Nov	Dec
# Calcium	124	125	120	121	121	123	148	144	140	141	141	127
# Calcium > 8.5	103	107	99	102	97	95	113	119	106	112	113	95
Pop. Mean =	9.1	9.2	9.1	9.1	9.0	9.0	9.0	9.1	9.1	9.1	9.1	8.9
Std. Deviation =	0.62	0.67	0.61	0.63	0.62	0.62	0.64	0.61	0.65	0.60	0.65	0.65
Network Mean =												
Natl. Mean =												
% Calcium > 8.5	83%	86%	83%	84%	80%	77%	76%	83%	76%	79%	80%	75%



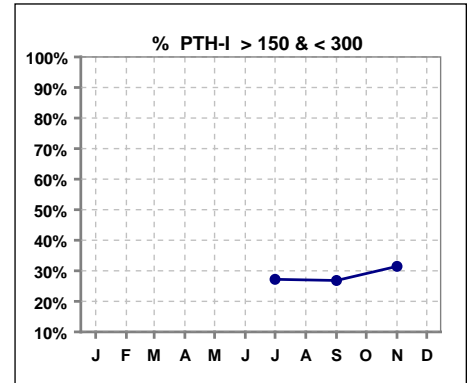
	Jan	Feb	Mar	Apr	May	Jun	Jul	Aug	Sep	Oct	Nov	Dec
# PTH-I	124		107		95		147		123		124	
# PTH-I > 100	110		99									
# PTH-I > 150					90		112		100		108	
Pop. Mean =	350		389		369		387		439		427	
Std. Deviation =	274		368		373		342		372		311	
Network Mean =												
Natl. Mean =												
% PTH-I > 100 or > 150	89%		93%		95%		76%		81%		87%	



	Jan	Feb	Mar	Apr	May	Jun	Jul	Aug	Sep	Oct	Nov	Dec
# PTH-I	124		107		95		147		123		124	
# PTH-I < 300	64		50		34		75		56		55	
Pop. Mean =	350		389		369		387		439		427	
Std. Deviation =	274		368		373		342		372		311	
Network Mean =												
Natl. Mean =												
% PTH-I < 300	52%		47%		36%		51%		46%		44%	



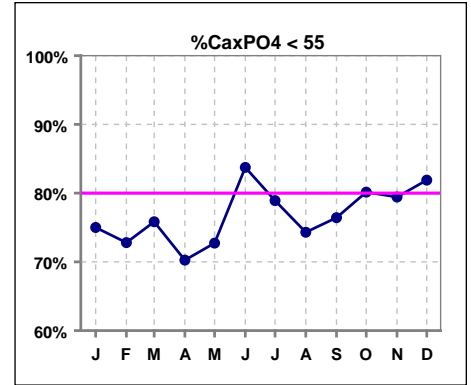
	Jan	Feb	Mar	Apr	May	Jun	Jul	Aug	Sep	Oct	Nov	Dec
# PTH-I							147		123		124	
# PTH-I > 150 & < 300							40		33		39	
Pop. Mean =							387		439		427	
Std. Deviation =							342		372		311	
Network Mean =												
Natl. Mean =												
% PTH-I > 100 & < 300							27%		27%		31%	



*Methodology: a) Monthly values based on patient's monthly average of all values present for the month; b) Quarter values are average of all values for quarter; c) Values not averaged use last value present at months end.

III. OSTEODYSTROPHY - CONT.

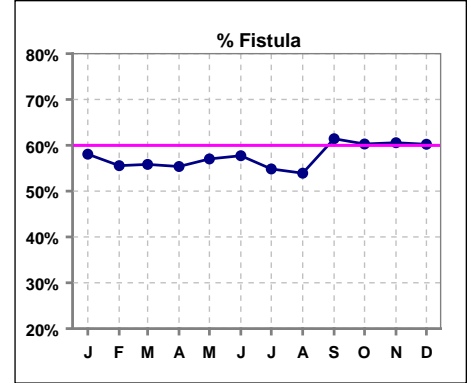
	Jan	Feb	Mar	Apr	May	Jun	Jul	Aug	Sep	Oct	Nov	Dec
# Ca x PO4	124	125	120	121	121	123	147	144	140	141	141	127
# Ca x PO4 < 55	93	91	91	85	88	103	116	107	107	113	112	104
Pop. Mean =	47.7	47.8	48.0	47.9	47.7	45.6	46.3	46.6	46.6	46.4	45.4	45.4
Std. Deviation =	12.3	14.3	12.3	11.1	11.1	10.9	13.6	12.5	13.2	11.2	11.5	11.2
Network Mean =												
Natl. Mean =												
% CaxPO4 < 55	75%	73%	76%	70%	73%	84%	79%	74%	76%	80%	79%	82%



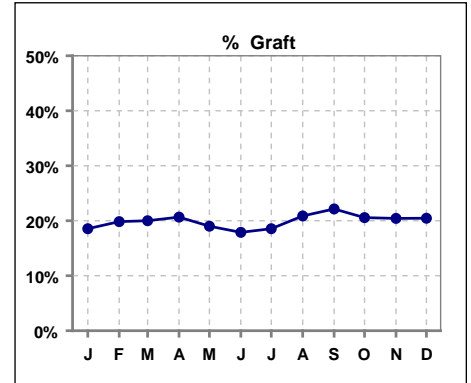
*Methodology: a) Monthly values based on patient's monthly average of all values present for the month; b) Quarter values are average of all values for quarter; c) Values not averaged use last value present at months end.

IV. ACCESS

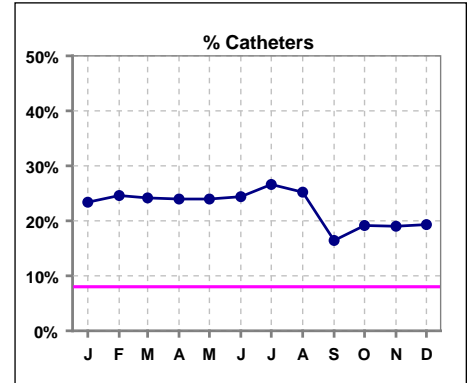
	Jan	Feb	Mar	Apr	May	Jun	Jul	Aug	Sep	Oct	Nov	Dec
# Access	124	126	120	121	121	123	124	115	140	141	142	88
# Fistula	72	70	67	67	69	71	68	62	86	85	86	53
Network % - 2004	55%	55%	55%	55%	55%	55%	55%	55%	55%	55%	55%	55%
Natl. % - 2004	35%	35%	35%	35%	35%	35%	35%	35%	35%	35%	35%	35%
% Fistula	58%	56%	56%	55%	57%	58%	55%	54%	61%	60%	61%	60%



	Jan	Feb	Mar	Apr	May	Jun	Jul	Aug	Sep	Oct	Nov	Dec
# Access	124	126	120	121	121	123	124	115	140	141	142	88
# Graft	23	25	24	25	23	22	23	24	31	29	29	18
Network %												
Natl. %												
% Graft	19%	20%	20%	21%	19%	18%	19%	21%	22%	21%	20%	20%



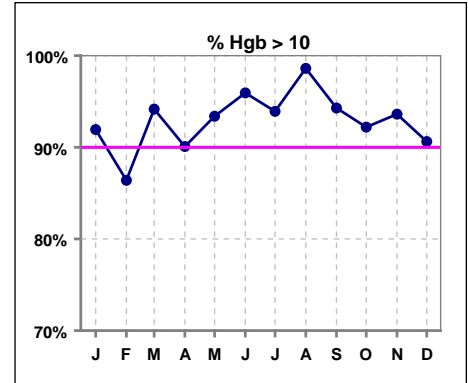
	Jan	Feb	Mar	Apr	May	Jun	Jul	Aug	Sep	Oct	Nov	Dec
# Access	124	126	120	121	121	123	124	115	140	141	142	88
# Catheters	29	31	29	29	29	30	33	29	23	27	27	17
Network %												
Natl. % - 2004	27%	27%	27%	27%	27%	27%	27%	27%	27%	27%	27%	27%
% Catheters	23%	25%	24%	24%	24%	24%	27%	25%	16%	19%	19%	19%



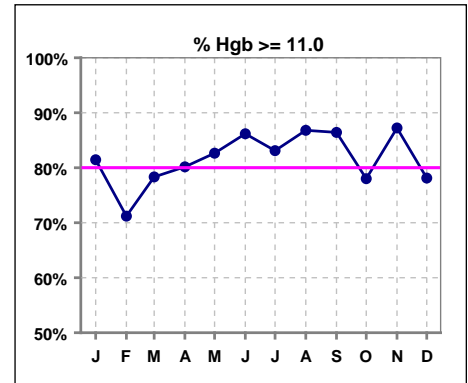
*Methodology: a) Monthly values based on patient's monthly average of all values present for the month; b) Quarter values are average of all values for quarter; c) Values not averaged use last value present at months end.

V. ANEMIA

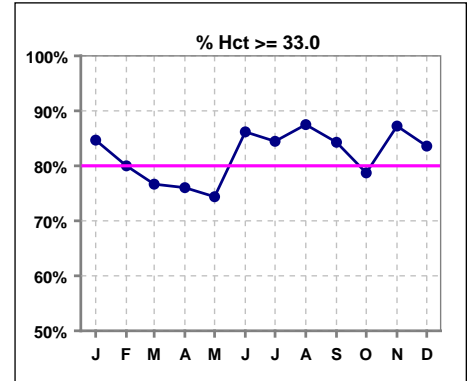
	Jan	Feb	Mar	Apr	May	Jun	Jul	Aug	Sep	Oct	Nov	Dec
# Hgb	124	125	120	121	121	123	148	144	140	141	141	128
# Hgb > 10.0	114	108	113	109	113	118	139	142	132	130	132	116
Pop. Mean =	11.9	11.7	11.9	12.0	12.0	12.2	12.1	12.1	12.2	11.9	12.0	11.7
Std. Deviation =	1.3	1.4	1.3	1.4	1.3	1.3	1.3	1.2	1.3	1.3	1.1	1.3
Network Mean =	11.8	11.8	11.8	11.8	11.8	11.8	11.8	11.8	11.8	11.8	11.8	11.8
Natl. Mean =												
% Hgb > 10.0	92%	86%	94%	90%	93%	96%	94%	99%	94%	92%	94%	91%



	Jan	Feb	Mar	Apr	May	Jun	Jul	Aug	Sep	Oct	Nov	Dec
# Hgb	124	125	120	121	121	123	148	144	140	141	141	128
# Hgb >= 11.0	101	89	94	97	100	106	123	125	121	110	123	100
Pop. Mean =	11.9	11.7	11.9	12.0	12.0	12.2	12.1	12.1	12.2	11.9	12.0	11.7
Std. Deviation =	1.3	1.4	1.3	1.4	1.3	1.3	1.3	1.2	1.3	1.3	1.1	1.3
Network Mean =	11.8	11.8	11.8	11.8	11.8	11.8	11.8	11.8	11.8	11.8	11.8	11.8
Natl. Mean =												
% Hgb >= 11.0	81%	71%	78%	80%	83%	86%	83%	87%	86%	78%	87%	78%
% Natl. >= 11 2004	80%	80%	80%	80%	80%	80%	80%	80%	80%	80%	80%	80%



	Jan	Feb	Mar	Apr	May	Jun	Jul	Aug	Sep	Oct	Nov	Dec
# Hct	124	125	120	121	121	123	148	144	140	141	141	128
# Hct >= 33.0	105	100	92	92	90	106	125	126	118	111	123	107
Pop. Mean =	37	36	36	36	36	37	37	37	37	36	36	36
Std. Deviation =	3.69	3.79	3.81	4.31	4.54	4.06	4.01	3.67	4.20	4.14	3.51	4.20
Network Mean =												
Natl. Mean =												
% Hct >= 33.0	85%	80%	77%	76%	74%	86%	84%	88%	84%	79%	87%	84%

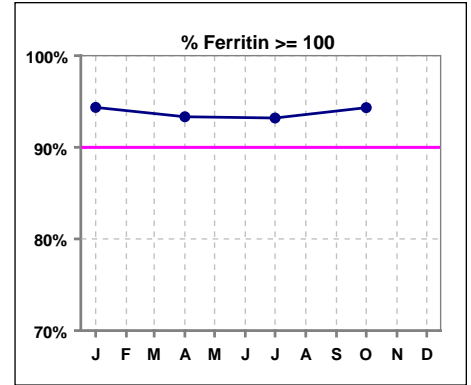


*Methodology: a) Monthly values based on patient's monthly average of all values present for the month; b) Quarter values are average of all values for quarter; c) Values not averaged use last value present at months end.

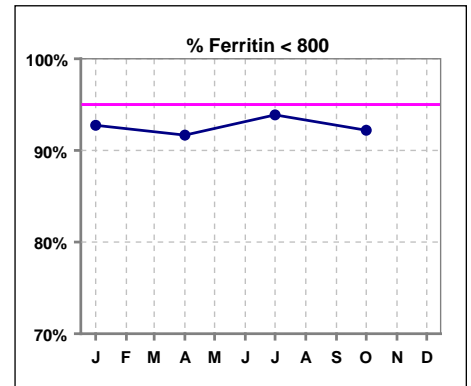
V. ANEMIA - CONT.

Iron Profile

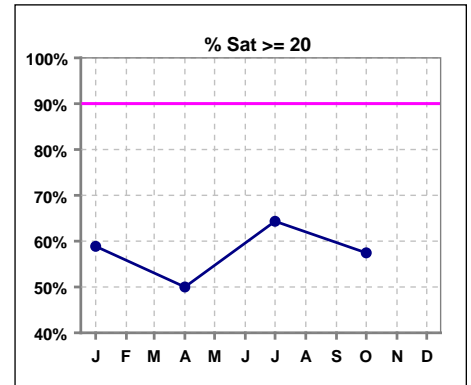
	Jan	Feb	Mar	Apr	May	Jun	Jul	Aug	Sep	Oct	Nov	Dec
# Ferritin	124			120			147			141		
# Ferritin >= 100	117			112			137			133		
Pop. Mean =	434			432			421			431		
Std. Deviation =	343			318			307			261		
Network Mean =												
Natl. Mean =												
% Ferritin >= 100	94%			93%			93%			94%		
%Natl. >=100 2004	94%			94%			94%			94%		



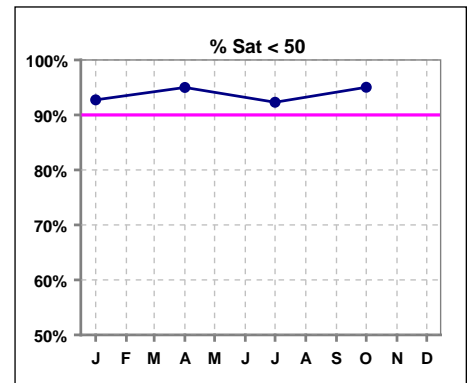
	Jan	Feb	Mar	Apr	May	Jun	Jul	Aug	Sep	Oct	Nov	Dec
# Ferritin	124			120			147			141		
# Ferritin < 800	115			110			138			130		
Pop. Mean =	434			432			421			431		
Std. Deviation =	343			318			307			261		
Network Mean =												
Natl. Mean =												
% Ferritin < 800	93%			92%			94%			92%		



	Jan	Feb	Mar	Apr	May	Jun	Jul	Aug	Sep	Oct	Nov	Dec
# % Sat	124			120			143			141		
# % Sat >= 20	73			60			92			81		
Pop. Mean =	26			23			28			25		
Std. Deviation =	14			13			18			13		
Network Mean =												
Natl. Mean =												
% Sat% >= 20	59%			50%			64%			57%		
%Natl. >=20 2004	81%			81%			81%			81%		



	Jan	Feb	Mar	Apr	May	Jun	Jul	Aug	Sep	Oct	Nov	Dec
# % Sat	124			120			143			141		
# % Sat < 50	115			114			132			134		
Pop. Mean =	26			23			28			25		
Std. Deviation =	14			13			18			13		
Network Mean =												
Natl. Mean =												
% Sat% < 50	93%			95%			92%			95%		



*Methodology: a) Monthly values based on patient's monthly average of all values present for the month; b) Quarter values are average of all values for quarter; c) Values not averaged use last value present at months end.