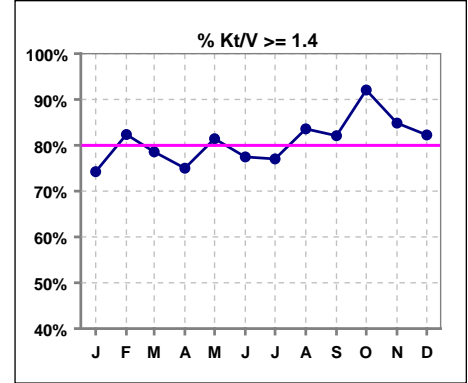


**I. ADEQUACY OF DIALYSIS**

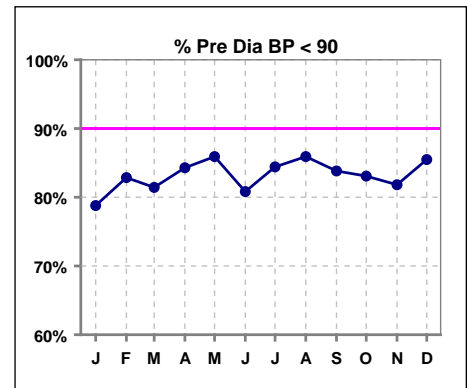
	Jan	Feb	Mar	Apr	May	Jun	Jul	Aug	Sep	Oct	Nov	Dec
# Kt/V	66	68	70	68	70	71	74	67	67	63	66	62
# Kt/V >= 1.4	49	56	55	51	57	55	57	56	55	58	56	51
Pop. Mean =	1.61	1.67	1.61	1.63	1.65	1.63	1.58	1.62	1.69	1.72	1.67	1.63
Std. Deviation =	0.42	0.35	0.35	0.45	0.35	0.49	0.31	0.28	0.30	0.31	0.49	0.35
Network Mean =	1.59	1.59	1.59	1.59	1.59	1.59	1.59	1.59	1.59	1.59	1.59	1.59
Natl. Mean =												
<b>% Kt/V &gt;= 1.4</b>	<b>74%</b>	<b>82%</b>	<b>79%</b>	<b>75%</b>	<b>81%</b>	<b>77%</b>	<b>77%</b>	<b>84%</b>	<b>82%</b>	<b>92%</b>	<b>85%</b>	<b>82%</b>
**% Kt/V >= 1.2	86%	97%	90%	93%	91%	89%	91%	94%	96%	95%	89%	92%

\*\* As of Apr. '04

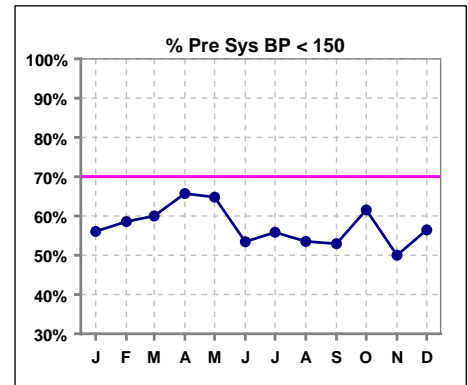


**Blood Pressure Control (Pre)**

	Jan	Feb	Mar	Apr	May	Jun	Jul	Aug	Sep	Oct	Nov	Dec
# Pre Dia BP	66	70	70	70	71	73	77	71	68	65	66	62
# Pre Dia BP < 90	52	58	57	59	61	59	65	61	57	54	54	53
Pop. Mean =	78	78	77	76	76	77	77	77	77	76	76	78
Std. Deviation =	18.5	14.8	17.6	14.2	14.4	15.9	16.8	13.8	13.3	13.9	14.6	26.2
Network Mean =												
Natl. Mean =												
<b>% Pre Dia BP &lt; 90</b>	<b>79%</b>	<b>83%</b>	<b>81%</b>	<b>84%</b>	<b>86%</b>	<b>81%</b>	<b>84%</b>	<b>86%</b>	<b>84%</b>	<b>83%</b>	<b>82%</b>	<b>85%</b>



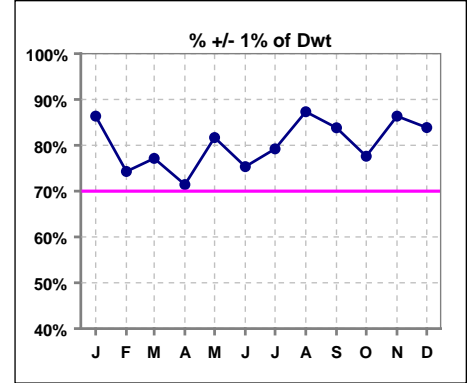
	Jan	Feb	Mar	Apr	May	Jun	Jul	Aug	Sep	Oct	Nov	Dec
# Pre Sys BP	66	70	70	70	71	73	77	71	68	65	66	62
# Pre Sys BP < 150	37	41	42	46	46	39	43	38	36	40	33	35
Pop. Mean =	147	149	146	146	145	147	145	144	146	146	147	145
Std. Deviation =	22.9	21.8	21.6	20.6	20.5	23.2	23.3	22.7	21.1	20.9	22.1	22.1
Network Mean =												
Natl. Mean =												
<b>% Pre Sys BP &lt; 150</b>	<b>56%</b>	<b>59%</b>	<b>60%</b>	<b>66%</b>	<b>65%</b>	<b>53%</b>	<b>56%</b>	<b>54%</b>	<b>53%</b>	<b>62%</b>	<b>50%</b>	<b>56%</b>



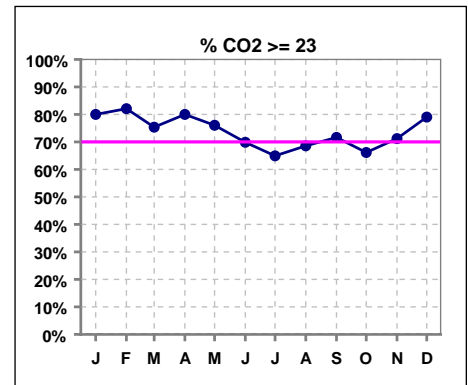
\*Methodology: a) Monthly values based on patient's monthly average of all values present for the month; b) Quarter values are average of all values for quarter; c) Values not averaged use last value present at months end.

**I. ADEQUACY OF DIALYSIS - CONT.**

	Jan	Feb	Mar	Apr	May	Jun	Jul	Aug	Sep	Oct	Nov	Dec
# Post/Dwt	66	70	70	70	71	73	77	71	68	67	66	62
# +/- 1% of Dwt	57	52	54	50	58	55	61	62	57	52	57	52
% +/- 1 % of Dwt	86%	74%	77%	71%	82%	75%	79%	87%	84%	78%	86%	84%



	Jan	Feb	Mar	Apr	May	Jun	Jul	Aug	Sep	Oct	Nov	Dec
# CO2	65	67	69	70	71	73	77	70	67	65	66	62
# CO2 >= 23	52	55	52	56	54	51	50	48	48	43	47	49
Pop. Mean =	25	24	23	24	24	24	23	24	24	24	24	25
Std. Deviation =	4.97	5.91	4.82	3.31	3.50	3.40	3.27	4.02	2.92	3.24	3.40	3.23
Network Mean =												
Natl. Mean =												
% CO2 >= 23	80%	82%	75%	80%	76%	70%	65%	69%	72%	66%	71%	79%



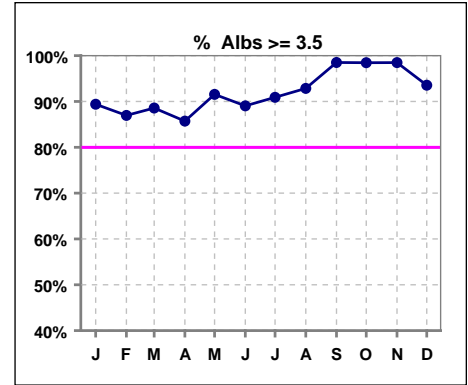
\*Methodology: a) Monthly values based on patient's monthly average of all values present for the month; b) Quarter values are average of all values for quarter; c) Values not averaged use last value present at months end.

\*Albumin values use BCG method - as of July 2001

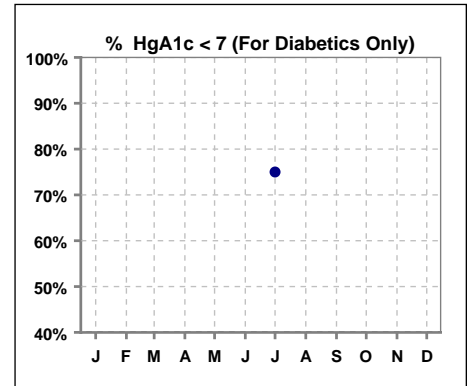
**II. NUTRITION**

	Jan	Feb	Mar	Apr	May	Jun	Jul	Aug	Sep	Oct	Nov	Dec
# Albumin	66	69	70	70	71	73	77	70	67	65	66	62
# Albumin >= 3.5	59	60	62	60	65	65	70	65	66	64	65	58
Pop. Mean =	3.9	3.9	3.9	3.9	3.9	3.9	4.0	4.1	4.2	4.1	4.1	4.1
Std. Deviation =	0.35	0.34	0.36	0.36	0.35	0.38	0.38	0.37	0.31	0.32	0.30	0.36
Network Mean =	3.4	3.4	3.4	3.4	3.4	3.4	3.4	3.4	3.4	3.4	3.4	3.4
Natl. Mean =	3.8	3.8	3.8	3.8	3.8	3.8	3.8	3.8	3.8	3.8	3.8	3.8
<b>% Alb &gt;= 3.5</b>	<b>89%</b>	<b>87%</b>	<b>89%</b>	<b>86%</b>	<b>92%</b>	<b>89%</b>	<b>91%</b>	<b>93%</b>	<b>99%</b>	<b>98%</b>	<b>98%</b>	<b>94%</b>
% Alb >= 4.0	42%	51%	53%	49%	41%	47%	64%	71%	75%	69%	71%	65%
*Natl % >= 3.5-BCG	81%	81%	81%	81%	81%	81%	81%	81%	81%	81%	81%	81%
*Natl. % >= 4.0-BCG	39%	39%	39%	39%	39%	39%	39%	39%	39%	39%	39%	39%

\*Figures for 2004



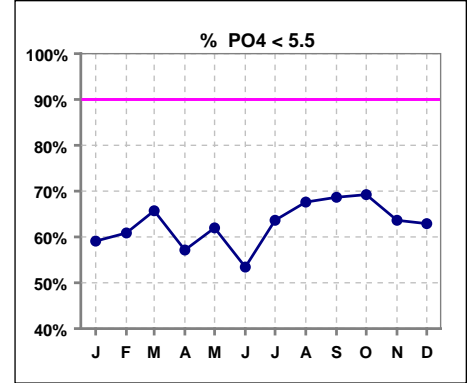
	Jan	Feb	Mar	Apr	May	Jun	Jul	Aug	Sep	Oct	Nov	Dec
# HgA1c							8					
# HgA1c < 7							6					
Pop. Mean =							6.2					
Std. Deviation =							0.87					
Network Mean =												
Natl. Mean =												
<b>% HgA1c &lt; 7</b>							<b>75%</b>					



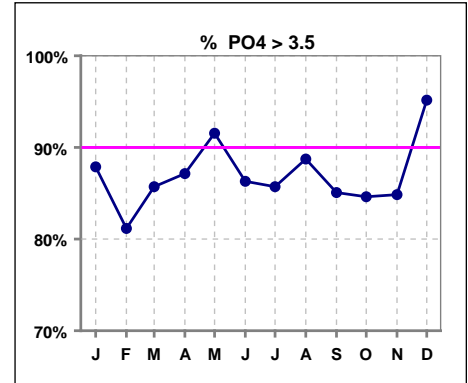
\*Methodology: a) Monthly values based on patient's monthly average of all values present for the month; b) Quarter values are average of all values for quarter; c) Values not averaged use last value present at months end.

**III. OSTEODYSTROPHY**

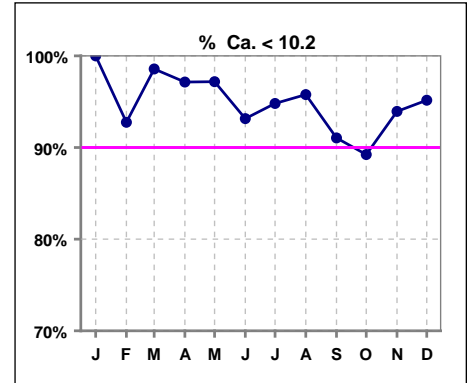
	Jan	Feb	Mar	Apr	May	Jun	Jul	Aug	Sep	Oct	Nov	Dec
# PO4	66	69	70	70	71	73	77	71	67	65	66	62
# PO4 < 5.5	39	42	46	40	44	39	49	48	46	45	42	39
Pop. Mean =	5.3	5.2	5.1	5.4	5.4	5.4	5.3	5.2	5.1	5.1	5.2	5.2
Std. Deviation =	1.75	1.78	1.44	1.73	1.56	1.78	1.77	1.68	1.56	1.47	1.64	1.40
Network Mean =												
Natl. Mean =												
<b>% PO4 &lt; 5.5</b>	<b>59%</b>	<b>61%</b>	<b>66%</b>	<b>57%</b>	<b>62%</b>	<b>53%</b>	<b>64%</b>	<b>68%</b>	<b>69%</b>	<b>69%</b>	<b>64%</b>	<b>63%</b>



	Jan	Feb	Mar	Apr	May	Jun	Jul	Aug	Sep	Oct	Nov	Dec
# PO4	66	69	70	70	71	73	77	71	67	65	66	62
# PO4 > 3.5	58	56	60	61	65	63	66	63	57	55	56	59
Pop. Mean =	5.3	5.2	5.1	5.4	5.4	5.4	5.3	5.2	5.1	5.1	5.2	5.2
Std. Deviation =	1.75	1.78	1.44	1.73	1.56	1.78	1.77	1.68	1.56	1.47	1.64	1.40
Network Mean =												
Natl. Mean =												
<b>% PO4 &gt; 3.5</b>	<b>88%</b>	<b>81%</b>	<b>86%</b>	<b>87%</b>	<b>92%</b>	<b>86%</b>	<b>86%</b>	<b>89%</b>	<b>85%</b>	<b>85%</b>	<b>85%</b>	<b>95%</b>



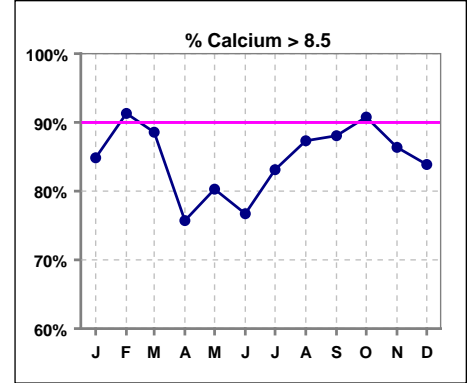
	Jan	Feb	Mar	Apr	May	Jun	Jul	Aug	Sep	Oct	Nov	Dec
# Calcium	66	69	70	70	71	73	77	71	67	65	66	62
# Calcium < 10.2	66	64	69	68	69	68	73	68	61	58	62	59
Pop. Mean =	9.1	9.3	9.2	9.1	9.0	9.1	9.1	9.2	9.3	9.4	9.2	9.2
Std. Deviation =	0.51	0.64	0.55	0.66	0.62	0.77	0.68	0.65	0.69	0.63	0.66	0.71
Network Mean =												
Natl. Mean =												
<b>% Ca &lt; 10.2</b>	<b>100%</b>	<b>93%</b>	<b>99%</b>	<b>97%</b>	<b>97%</b>	<b>93%</b>	<b>95%</b>	<b>96%</b>	<b>91%</b>	<b>89%</b>	<b>94%</b>	<b>95%</b>



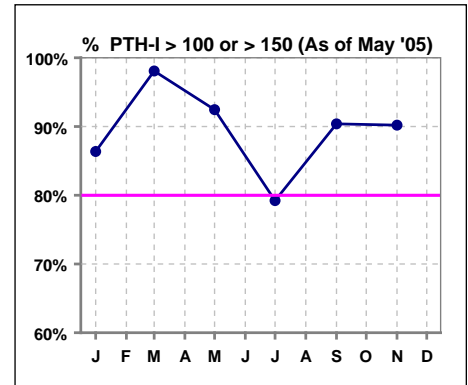
\*Methodology: a) Monthly values based on patient's monthly average of all values present for the month; b) Quarter values are average of all values for quarter; c) Values not averaged use last value present at months end.

**III. OSTEODYSTROPHY - CONT.**

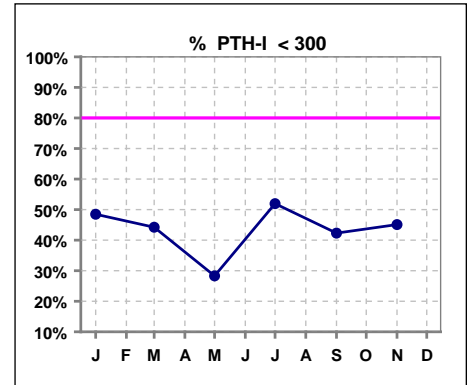
	Jan	Feb	Mar	Apr	May	Jun	Jul	Aug	Sep	Oct	Nov	Dec
# Calcium	66	69	70	70	71	73	77	71	67	65	66	62
# Calcium > 8.5	56	63	62	53	57	56	64	62	59	59	57	52
Pop. Mean =	9.1	9.3	9.2	9.1	9.0	9.1	9.1	9.2	9.3	9.4	9.2	9.2
Std. Deviation =	0.51	0.64	0.55	0.66	0.62	0.77	0.68	0.65	0.69	0.63	0.66	0.71
Network Mean =												
Natl. Mean =												
<b>% Calcium &gt; 8.5</b>	<b>85%</b>	<b>91%</b>	<b>89%</b>	<b>76%</b>	<b>80%</b>	<b>77%</b>	<b>83%</b>	<b>87%</b>	<b>88%</b>	<b>91%</b>	<b>86%</b>	<b>84%</b>



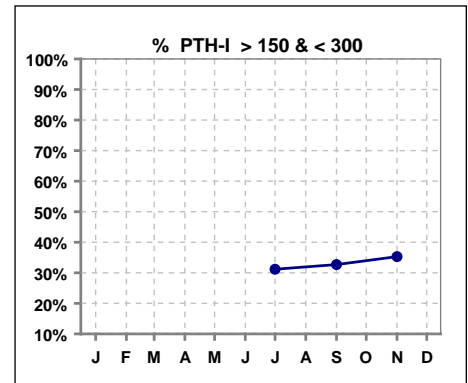
	Jan	Feb	Mar	Apr	May	Jun	Jul	Aug	Sep	Oct	Nov	Dec
# PTH-I	66		52		53		77		52		51	
# PTH-I > 100	57		51									
# PTH-I > 150					49		61		47		46	
Pop. Mean =	420		340		376		416		531		557	
Std. Deviation =	410		402		390		433		528		476	
Network Mean =												
Natl. Mean =												
<b>% PTH-I &gt; 100 or &gt; 150 (As of May '05)</b>	<b>86%</b>		<b>98%</b>		<b>92%</b>		<b>79%</b>		<b>90%</b>		<b>90%</b>	



	Jan	Feb	Mar	Apr	May	Jun	Jul	Aug	Sep	Oct	Nov	Dec
# PTH-I	66		52		53		77		52		51	
# PTH-I < 300	32		23		15		40		22		23	
Pop. Mean =	420		340		376		416		531		557	
Std. Deviation =	410		402		390		433		528		476	
Network Mean =												
Natl. Mean =												
<b>% PTH-I &lt; 300</b>	<b>48%</b>		<b>44%</b>		<b>28%</b>		<b>52%</b>		<b>42%</b>		<b>45%</b>	



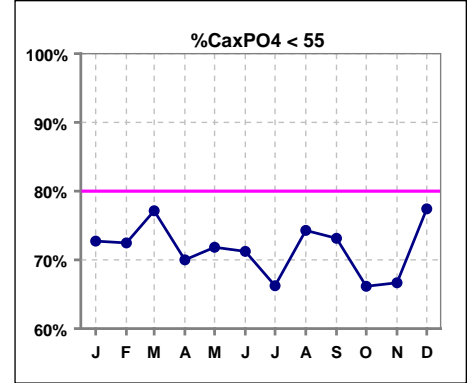
	Jan	Feb	Mar	Apr	May	Jun	Jul	Aug	Sep	Oct	Nov	Dec
# PTH-I							77		52		51	
# PTH-I > 150 & < 300							24		17		18	
Pop. Mean =							416		531		557	
Std. Deviation =							433		528		476	
Network Mean =												
Natl. Mean =												
<b>% PTH-I &gt; 100 &amp; &lt; 300</b>							<b>31%</b>		<b>33%</b>		<b>35%</b>	



\*Methodology: a) Monthly values based on patient's monthly average of all values present for the month; b) Quarter values are average of all values for quarter; c) Values not averaged use last value present at months end.

**III. OSTEODYSTROPHY - CONT.**

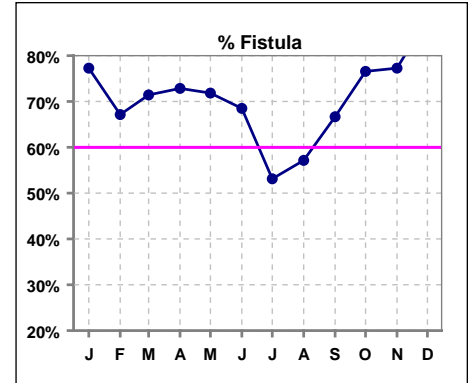
	Jan	Feb	Mar	Apr	May	Jun	Jul	Aug	Sep	Oct	Nov	Dec
# Ca x PO4	66	69	70	70	71	73	77	70	67	65	66	62
# Ca x PO4 < 55	48	50	54	49	51	52	51	52	49	43	44	48
Pop. Mean =	48.2	48.4	47.2	48.8	48.6	48.9	49.7	49.2	49.0	49.4	48.7	48.7
Std. Deviation =	15.6	17.3	13.6	16.2	14.7	16.3	16.3	16.8	16.5	14.5	17.0	14.3
Network Mean =												
Natl. Mean =												
<b>% CaxPO4 &lt; 55</b>	<b>73%</b>	<b>72%</b>	<b>77%</b>	<b>70%</b>	<b>72%</b>	<b>71%</b>	<b>66%</b>	<b>74%</b>	<b>73%</b>	<b>66%</b>	<b>67%</b>	<b>77%</b>



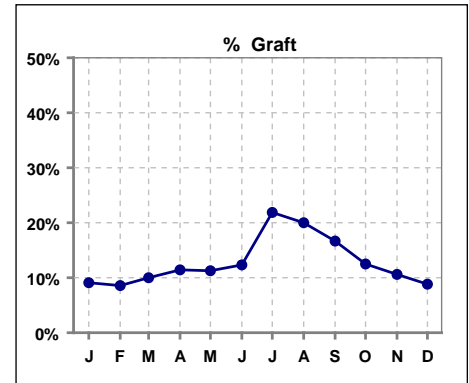
\*Methodology: a) Monthly values based on patient's monthly average of all values present for the month; b) Quarter values are average of all values for quarter; c) Values not averaged use last value present at months end.

**IV. ACCESS**

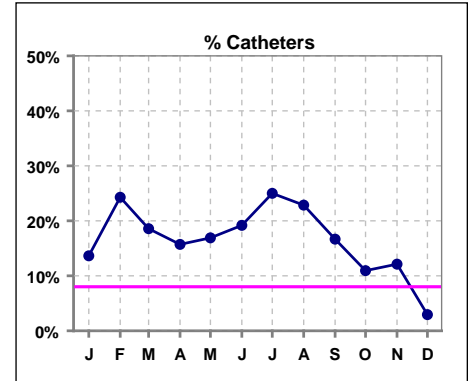
	Jan	Feb	Mar	Apr	May	Jun	Jul	Aug	Sep	Oct	Nov	Dec
<b># Access</b>	66	70	70	70	71	73	32	35	42	64	66	34
<b># Fistula</b>	51	47	50	51	51	50	17	20	28	49	51	30
<b>Network % - 2004</b>	55%	55%	55%	55%	55%	55%	55%	55%	55%	55%	55%	55%
<b>Natl. % - 2004</b>	35%	35%	35%	35%	35%	35%	35%	35%	35%	35%	35%	35%
<b>% Fistula</b>	77%	67%	71%	73%	72%	68%	53%	57%	67%	77%	77%	88%



	Jan	Feb	Mar	Apr	May	Jun	Jul	Aug	Sep	Oct	Nov	Dec
<b># Access</b>	66	70	70	70	71	73	32	35	42	64	66	34
<b># Graft</b>	6	6	7	8	8	9	7	7	7	8	7	3
<b>Network %</b>												
<b>Natl. %</b>												
<b>% Graft</b>	9%	9%	10%	11%	11%	12%	22%	20%	17%	13%	11%	9%



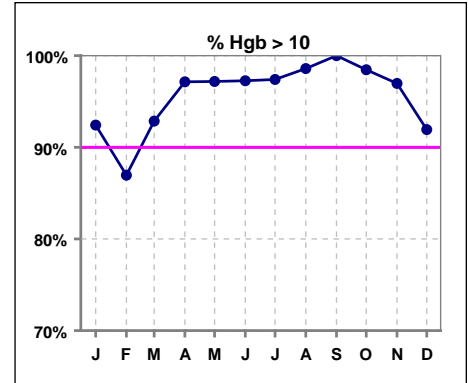
	Jan	Feb	Mar	Apr	May	Jun	Jul	Aug	Sep	Oct	Nov	Dec
<b># Access</b>	66	70	70	70	71	73	32	35	42	64	66	34
<b># Catheters</b>	9	17	13	11	12	14	8	8	7	7	8	1
<b>Network %</b>												
<b>Natl. % - 2004</b>	27%	27%	27%	27%	27%	27%	27%	27%	27%	27%	27%	27%
<b>% Catheters</b>	14%	24%	19%	16%	17%	19%	25%	23%	17%	11%	12%	3%



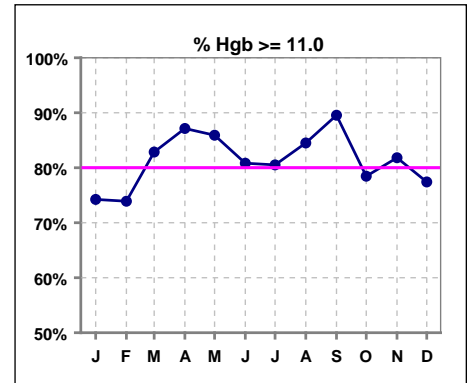
\*Methodology: a) Monthly values based on patient's monthly average of all values present for the month; b) Quarter values are average of all values for quarter; c) Values not averaged use last value present at months end.

**V. ANEMIA**

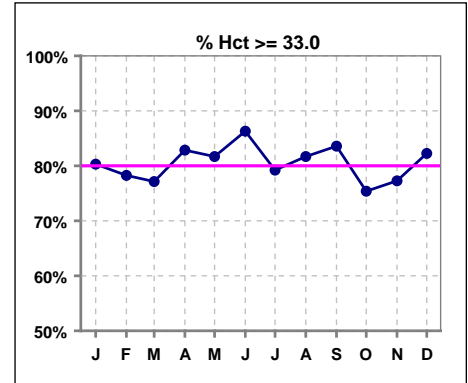
	Jan	Feb	Mar	Apr	May	Jun	Jul	Aug	Sep	Oct	Nov	Dec
# Hgb	66	69	70	70	71	73	77	71	67	65	66	62
# Hgb > 10.0	61	60	65	68	69	71	75	70	67	64	64	57
Pop. Mean =	12.0	11.9	12.0	12.0	12.1	12.3	12.1	12.2	12.2	12.0	12.0	11.7
Std. Deviation =	1.6	1.6	1.4	1.3	1.3	1.4	1.3	1.2	1.1	1.1	1.3	1.3
Network Mean =	11.8	11.8	11.8	11.8	11.8	11.8	11.8	11.8	11.8	11.8	11.8	11.8
Natl. Mean =												
<b>% Hgb &gt; 10.0</b>	<b>92%</b>	<b>87%</b>	<b>93%</b>	<b>97%</b>	<b>97%</b>	<b>97%</b>	<b>97%</b>	<b>99%</b>	<b>100%</b>	<b>98%</b>	<b>97%</b>	<b>92%</b>



	Jan	Feb	Mar	Apr	May	Jun	Jul	Aug	Sep	Oct	Nov	Dec
# Hgb	66	69	70	70	71	73	77	71	67	65	66	62
# Hgb >= 11.0	49	51	58	61	61	59	62	60	60	51	54	48
Pop. Mean =	12.0	11.9	12.0	12.0	12.1	12.3	12.1	12.2	12.2	12.0	12.0	11.7
Std. Deviation =	1.6	1.6	1.4	1.3	1.3	1.4	1.3	1.2	1.1	1.1	1.3	1.3
Network Mean =	11.8	11.8	11.8	11.8	11.8	11.8	11.8	11.8	11.8	11.8	11.8	11.8
Natl. Mean =												
<b>% Hgb &gt;= 11.0</b>	<b>74%</b>	<b>74%</b>	<b>83%</b>	<b>87%</b>	<b>86%</b>	<b>81%</b>	<b>81%</b>	<b>85%</b>	<b>90%</b>	<b>78%</b>	<b>82%</b>	<b>77%</b>
<b>% Natl. &gt;= 11 2004</b>	<b>80%</b>	<b>80%</b>	<b>80%</b>	<b>80%</b>	<b>80%</b>	<b>80%</b>	<b>80%</b>	<b>80%</b>	<b>80%</b>	<b>80%</b>	<b>80%</b>	<b>80%</b>



	Jan	Feb	Mar	Apr	May	Jun	Jul	Aug	Sep	Oct	Nov	Dec
# Hct	66	69	70	70	71	73	77	71	67	65	66	62
# Hct >= 33.0	53	54	54	58	58	63	61	58	56	49	51	51
Pop. Mean =	37	36	36	35	36	37	36	37	36	36	36	36
Std. Deviation =	4.70	4.79	4.15	3.68	4.05	4.62	4.19	3.82	3.25	3.30	4.00	4.05
Network Mean =												
Natl. Mean =												
<b>% Hct &gt;= 33.0</b>	<b>80%</b>	<b>78%</b>	<b>77%</b>	<b>83%</b>	<b>82%</b>	<b>86%</b>	<b>79%</b>	<b>82%</b>	<b>84%</b>	<b>75%</b>	<b>77%</b>	<b>82%</b>



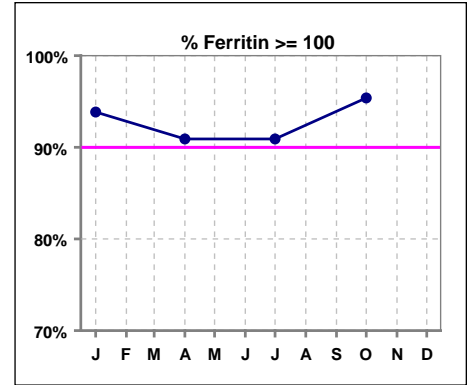
\*Methodology: a) Monthly values based on patient's monthly average of all values present for the month; b) Quarter values are average of all values for quarter; c) Values not averaged use last value present at months end.



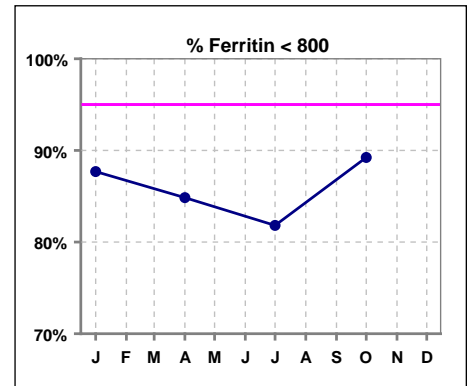
**V. ANEMIA - CONT.**

**Iron Profile**

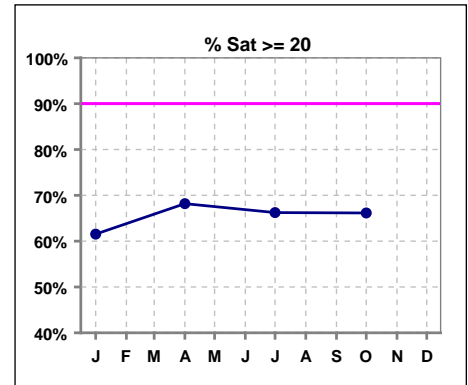
	Jan	Feb	Mar	Apr	May	Jun	Jul	Aug	Sep	Oct	Nov	Dec
# Ferritin	65			66			77			65		
# Ferritin >= 100	61			60			70			62		
Pop. Mean =	559			425			492			500		
Std. Deviation =	1100			327			351			265		
Network Mean =												
Natl. Mean =												
<b>% Ferritin &gt;= 100</b>	94%			91%			91%			95%		
<b>%Natl. &gt;=100 2004</b>	94%			94%			94%			94%		



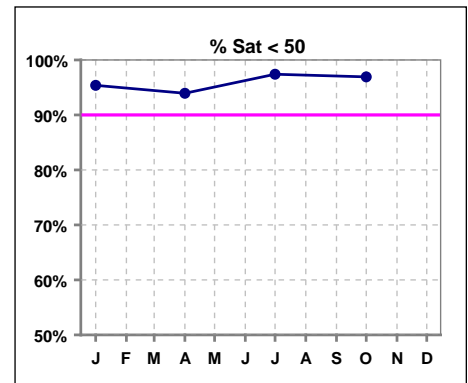
	Jan	Feb	Mar	Apr	May	Jun	Jul	Aug	Sep	Oct	Nov	Dec
# Ferritin	65			66			77			65		
# Ferritin < 800	57			56			63			58		
Pop. Mean =	559			425			492			500		
Std. Deviation =	1100			327			351			265		
Network Mean =												
Natl. Mean =												
<b>% Ferritin &lt; 800</b>	88%			85%			82%			89%		



	Jan	Feb	Mar	Apr	May	Jun	Jul	Aug	Sep	Oct	Nov	Dec
# % Sat	65			66			77			65		
# % Sat >= 20	40			45			51			43		
Pop. Mean =	27			26			26			25		
Std. Deviation =	15			14			12			12		
Network Mean =												
Natl. Mean =												
<b>% Sat% &gt;= 20</b>	62%			68%			66%			66%		
<b>%Natl. &gt;=20 2004</b>	81%			81%			81%			81%		



	Jan	Feb	Mar	Apr	May	Jun	Jul	Aug	Sep	Oct	Nov	Dec
# % Sat	65			66			77			65		
# % Sat < 50	62			62			75			63		
Pop. Mean =	27			26			26			25		
Std. Deviation =	15			14			12			12		
Network Mean =												
Natl. Mean =												
<b>% Sat% &lt; 50</b>	95%			94%			97%			97%		



\*Methodology: a) Monthly values based on patient's monthly average of all values present for the month; b) Quarter values are average of all values for quarter; c) Values not averaged use last value present at months end.